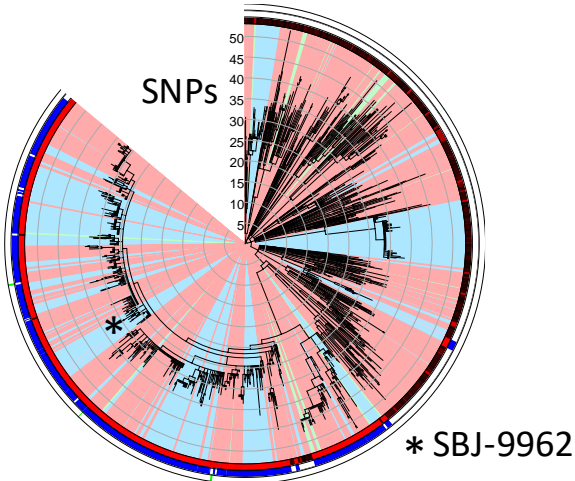
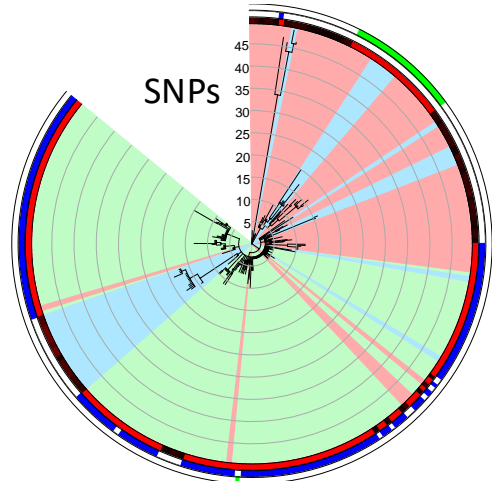


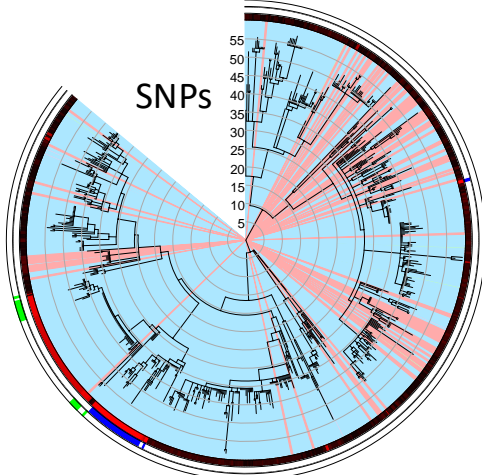
S. sonnei
PDS000033428.133
1316 strains



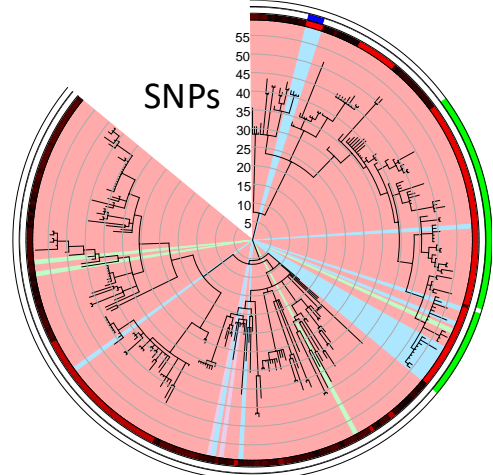
S. sonnei
PDS000004492.71
250 strains



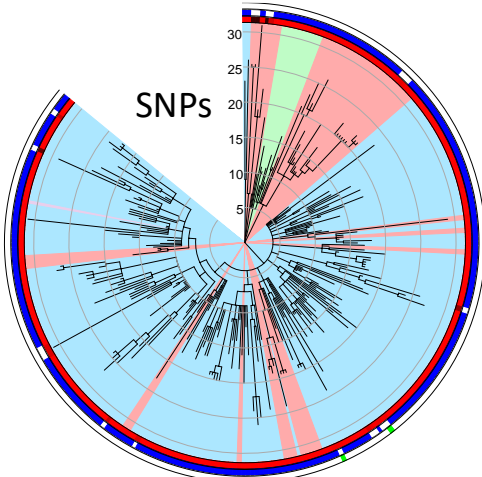
S. sonnei
PDS000033340.81
741 strains



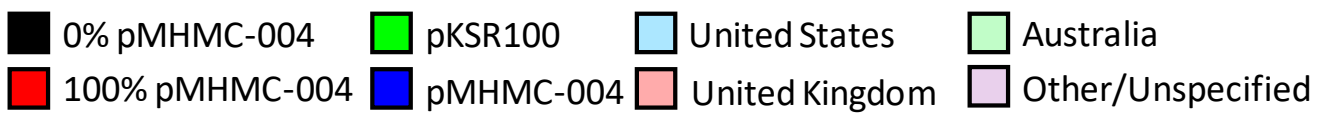
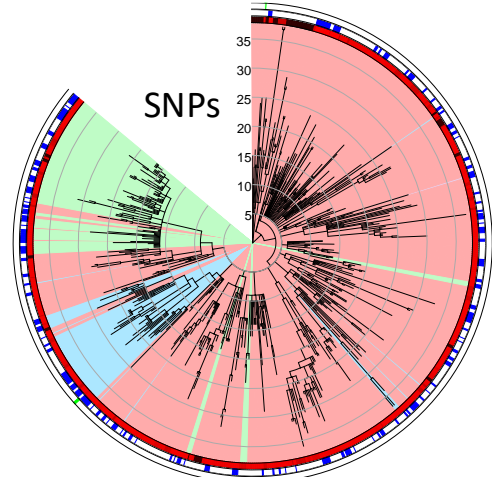
S. sonnei
PDS000035344.47
298 strains



S. flexneri
PDS000007822.142
275 strains



S. flexneri
PDS000006028.122
583 strains



Supplementary Figure S2: Large SNP-defined groups of *S. sonnei* and *S. flexneri* intercontinental transmission and plasmid acquisition and loss events. pMHMC-004 and pKSR100 presence is indicated in the exterior two rings. Total plasmid coverage is shown by a gradient in the first ring outside the dendrogram. Country of origin is shown for the United States, United Kingdom, and Australia. Other countries of origin and those without specified origins are grouped together in a fourth category.