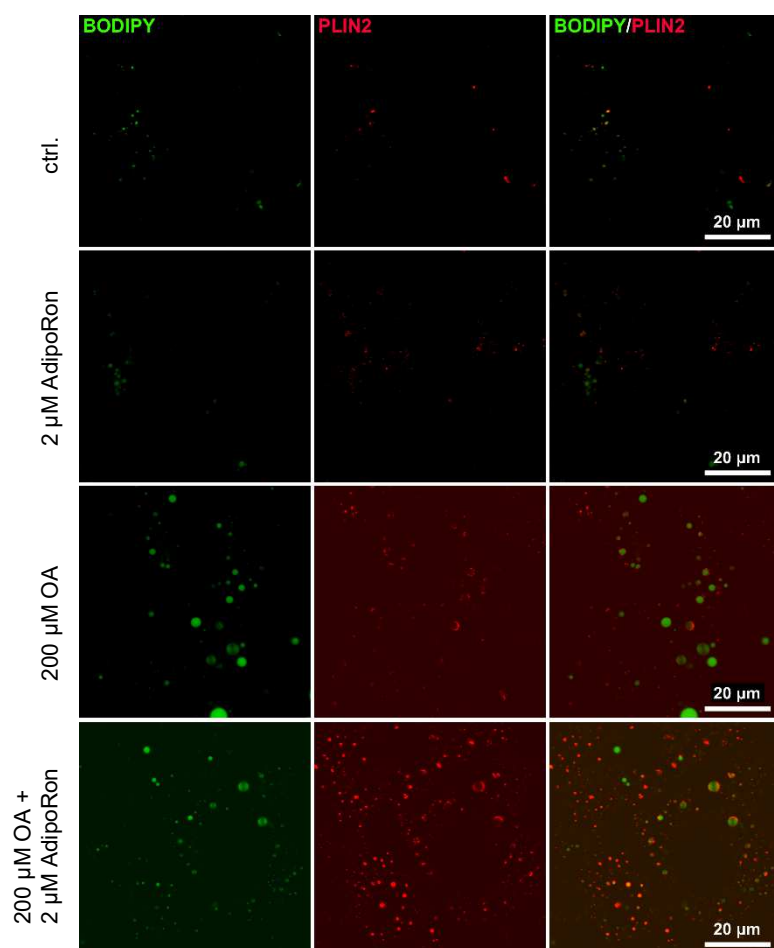
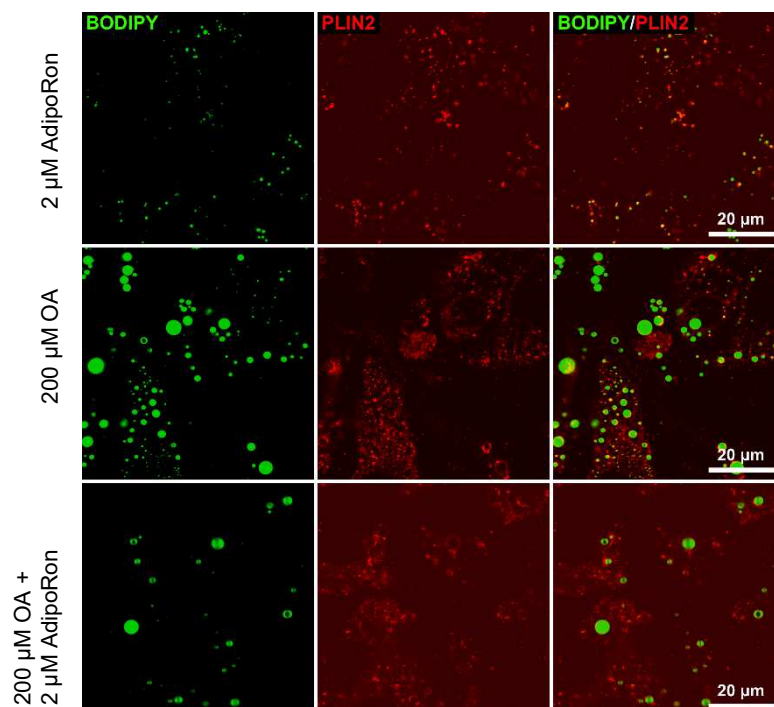


## Supplementary Fig. S2

S12

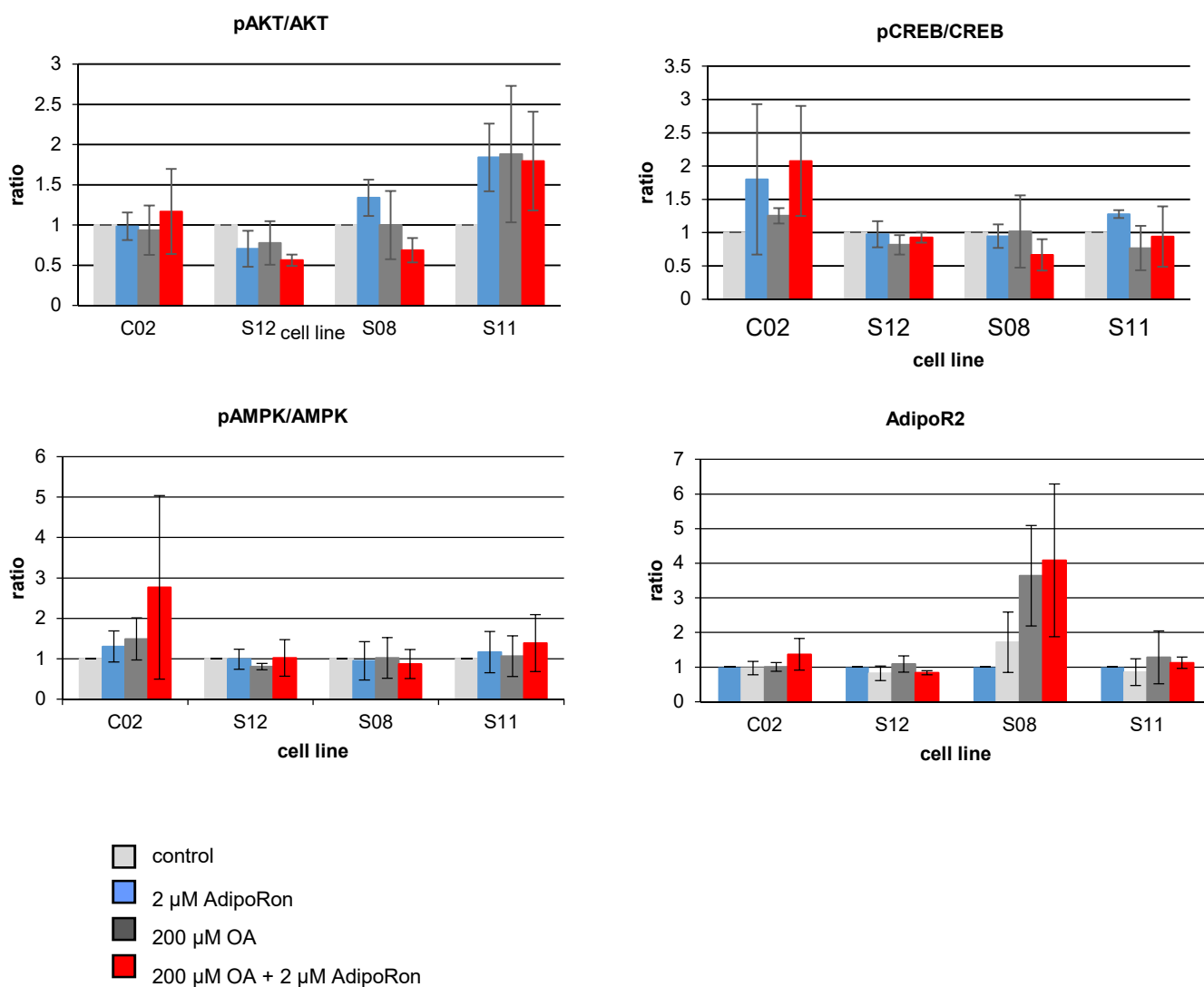


S11



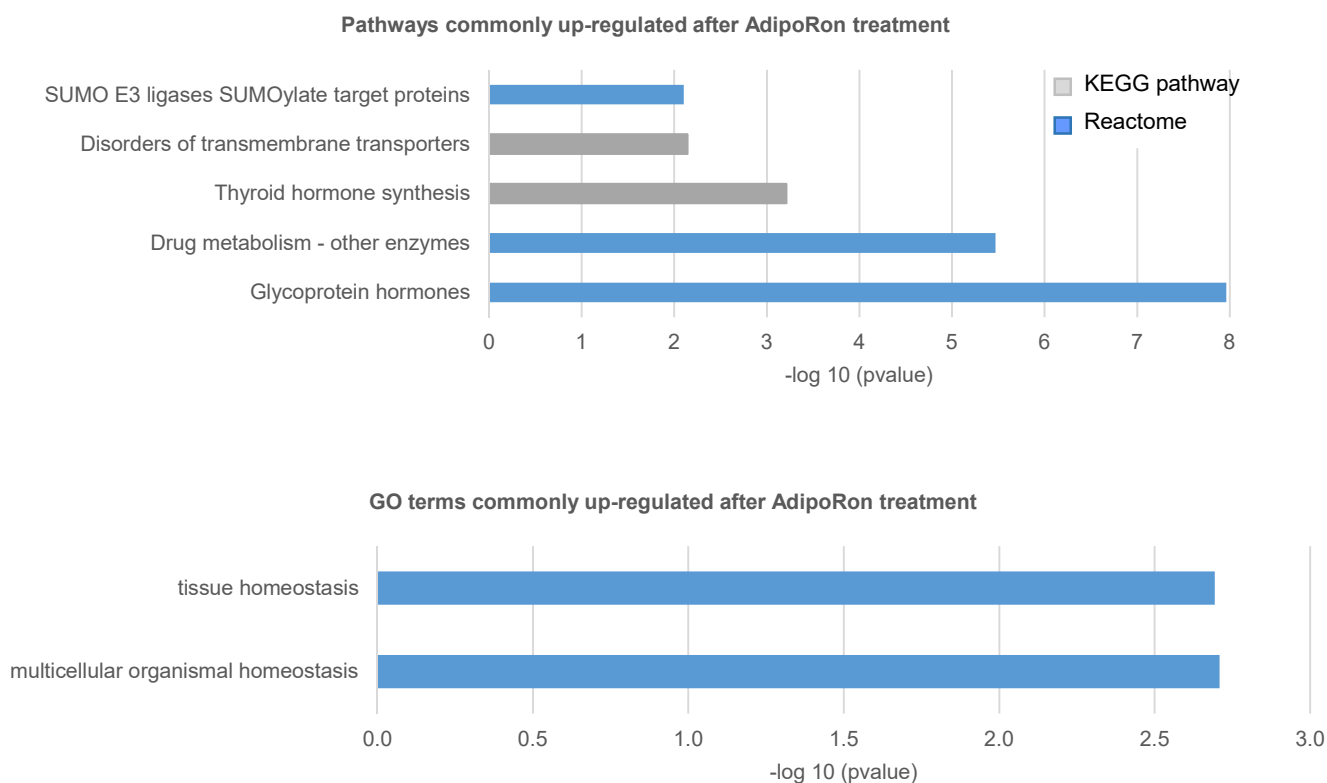
**Fig. S2: Confocal pictures of HLCs.** Representative immunocytochemistry of hepatocyte markers at the end of HLC differentiation for the lines S12 and S11. LDs (BODIPY 493/593, green), PLIN2 (red).

### Supplementary Fig. S3



**Fig. S3: Quantification of Western Blots for metabolic master regulators.** Western Blots for the indicated factors as well as for  $\beta$ -ACTIN were performed in triplicates for each cell line. All bands were normalized to  $\beta$ -ACTIN. The ratio between the phosphorylated and the non-phosphorylated isoform was calculated. Depicted are means of 3 biological replicates  $\pm$  SD.

### Supplementary Fig. S4



**Fig. S4: Commonly AdipoRon regulated genes.** Metascape was used to perform pathway enrichment analysis for genes that were commonly up- and down- regulated in control and OA treated cells.

Table S1

[Click here to Download Table S1](#)

**Table S2: Antibodies**

Antibody	species	company	Order number	dilution	Application	Blocking
ALB	mouse	Sigma	A6684-.2ml	1:500	ICC	10% normal goat serum
AFP	rabbit	Sigma	HPA023600	1:250	ICC	10% normal goat serum
ECAD	rabbit	CST	3195	1:200	ICC	10% normal goat serum
HNF4 $\alpha$	rabbit	Abcam	92378	1:250	ICC	10% normal goat serum
PLIN2	rabbit	Proteintech	15294-1-AP	1:200	ICC	10% normal goat serum
AKT	rabbit	CST	9272S	1:1000	WB	5% milk TBST
pAKT	rabbit	CST	9271S	1:1000	WB	5% milk TBST
CREB	rabbit	CST	9197S	1:1000	WB	5% milk TBST
pCREB (Ser133)	rabbit	CST	9198S	1:1000	WB	5% milk TBST
AMPK	rabbit	CST	2532S	1:1000	WB	5% milk TBST
pAMPK (Thr172)	rabbit	CST	2535S	1:1000	WB	5% milk TBST
FGF21	rabbit	Abcam	Ab171941	1:1000	WB	5% milk TBST
AdipoR1	mouse	Proteintech	66619-1-Ig	1:1000	WB	5% milk TBST
AdipoR2	rabbit	Proteintech	14361-1-AP	1:500	WB	5% milk TBST
B-Actin	mouse	CST	3700S	1:5000	WB	5% milk TBST

Table S3

[Click here to Download Table S3](#)