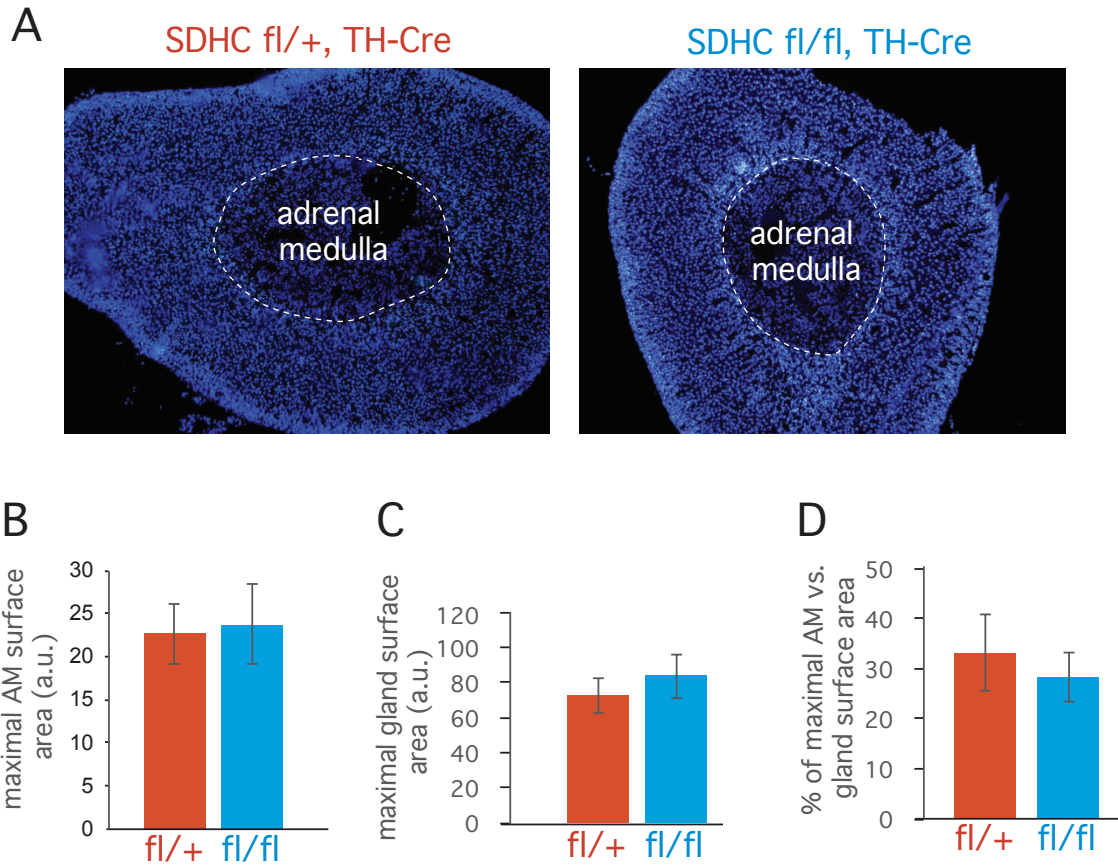
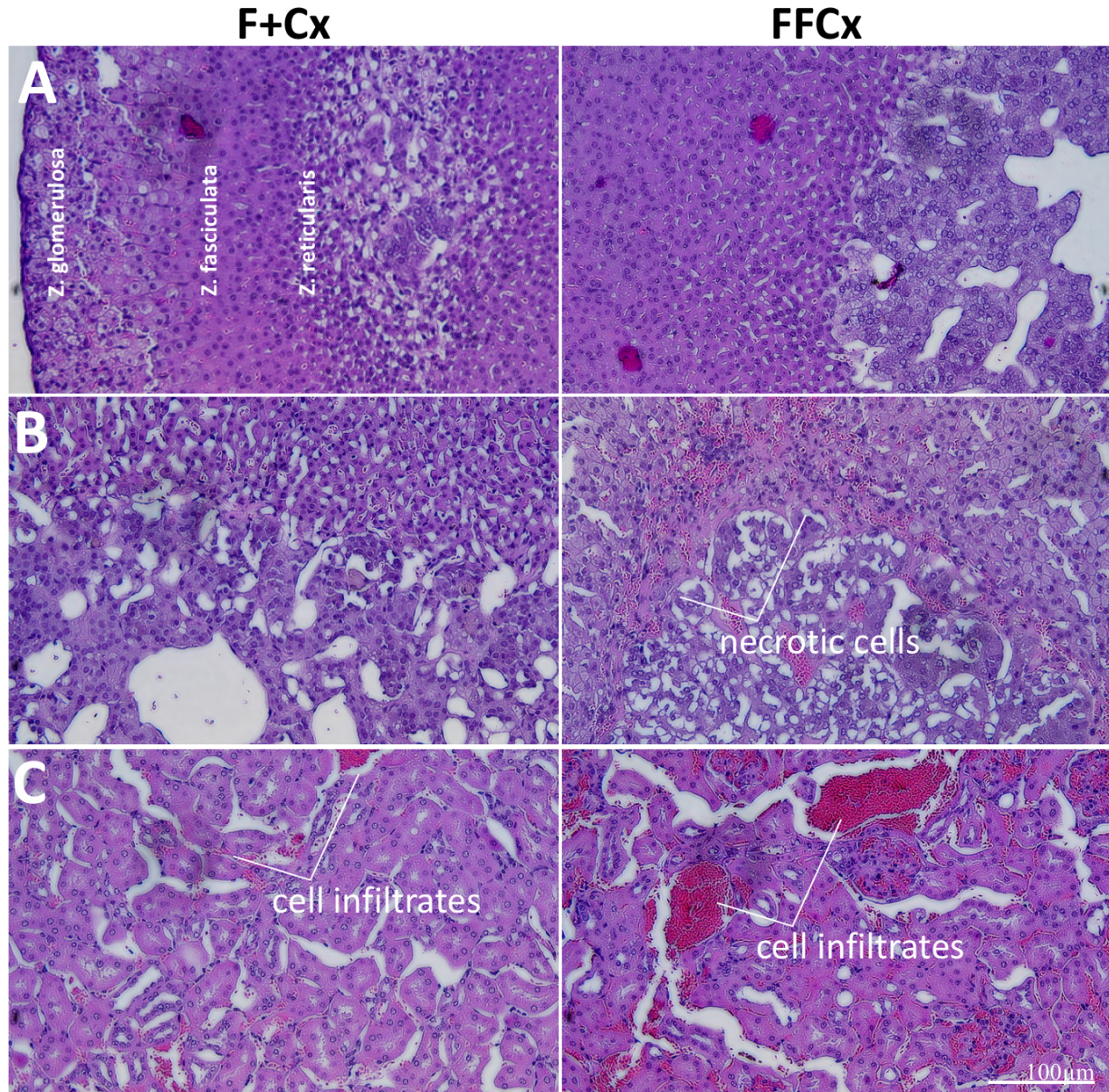


Supplemental material for "Unexpected obesity, rather than tumorigenesis, in a conditional mouse model of mitochondrial complex II deficiency" Fatimah Al Khazal, Seungwoo Kang, Molly Nelson Holte, Doo-Sup Choi, Ravinder Singh, Patricia Ortega-Sáenz, José López-Barneo, and L. James Maher, III



Supplemental Fig. S1. Comparison of the size of adrenal medullas (AM) and adrenal glands from non-obese control (SDHC F/+, TH-Cre; n=3) and obese SDHC-conditional (SDHC F/F, TH-Cre; n=7) mice. Glands are stained with DAPI to mark cell nuclei. Data are given as mean \pm standard error. In all comparisons, differences were not statistically significant ($p > 0.05$).



Supplemental Fig. S2. Representative images of adrenal gland morphology by H&E staining in non-obese SDHC F/+ TH-Cre control mice (left column; F+Cx) vs. obese SDHC F/F TH-Cre experimental mice (right column; FFCx). A. Gross view of the adrenal cortex. B. Presence of necrotic cells and polymorphonuclear leukocytes in the Zona fasciculata region of the cortex of experimental animals. C. Prominent mononuclear cell infiltrates among chromaffin cells of experimental animals, indicating severe inflammatory response. A total of 12 adrenal specimens were analyzed (6 experimental and 6 control male mice).