

**Gram-negative bacteria**

*Pseudomonas aeruginosa*

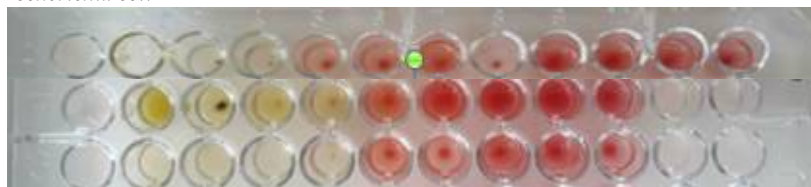


ET CE

But CE

Poly CE

*Escherichia coli*

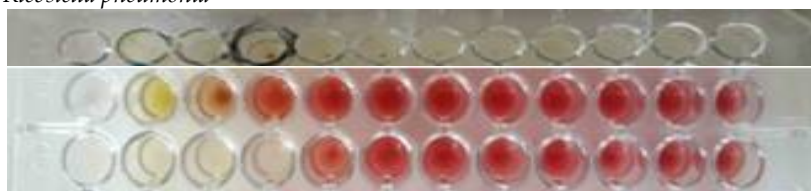


ET CE

But CE

Poly CE

*Klebsiella pneumonia*



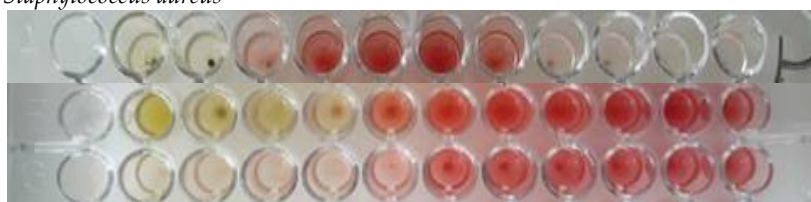
ET CE

But CE

Poly CE

**Gram-positive bacteria**

*Staphylococcus aureus*



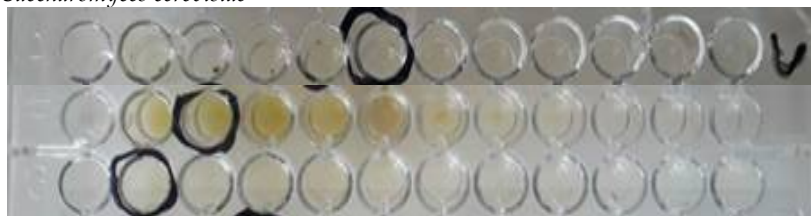
ET CE

But CE

Poly CE

**Yeast**

*Saccharomyces cerevisiae*

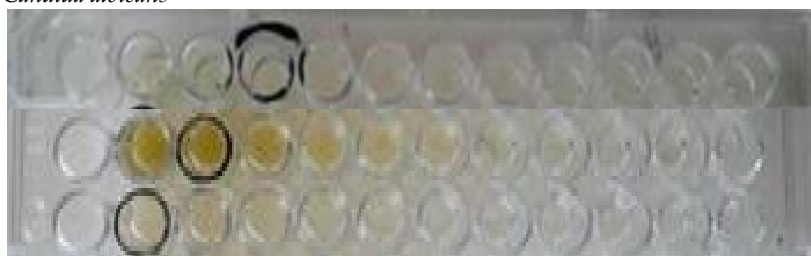


ET CE

But CE

Poly CE

*Candida albicans*



ET CE

But CE

Poly CE

**Figure 4.** Determination of minimum inhibitory concentrations (MIC) of hydroethanol, butanol, and the polyphenol-rich fraction of *Caralluma europaea* against *Pseudomonas aeruginosa*, *Escherichia coli*, *Klebsiella pneumonia*, *Staphylococcus aureus*, *Saccharomyces cerevisiae*, and *Candida albicans*.