

Figure S1 Waterfall plot of the best percentage change in patients with EGFR exon 21 L858R in response to afatinib with bevacizumab.

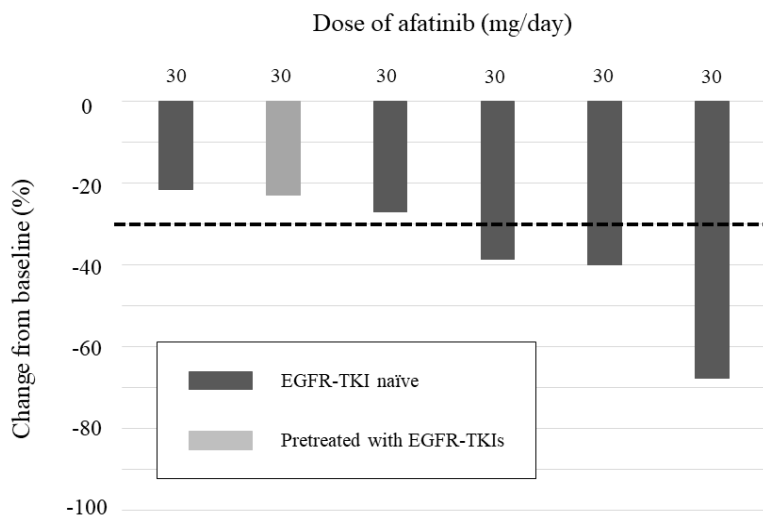


Figure S2 Waterfall plot of the best percentage change in patients with EGFR exon 19 deletion in response to afatinib with bevacizumab.

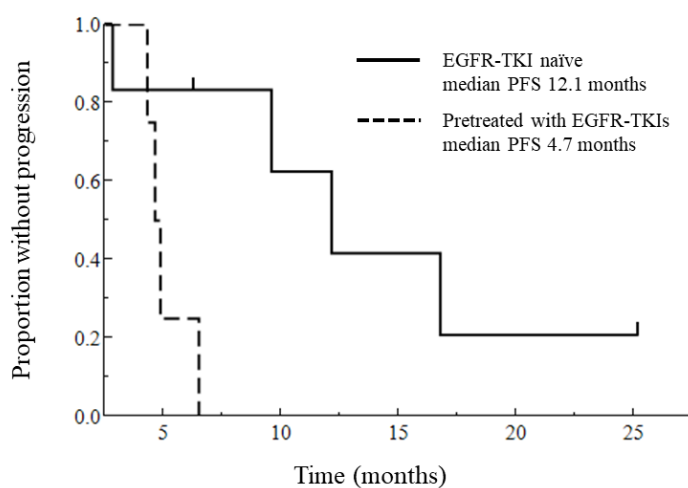


Figure S3 KaplanMeier curves of progression-free survival following afatinib with bevacizumab treatment in patients with EGFR exon 21 L858R.

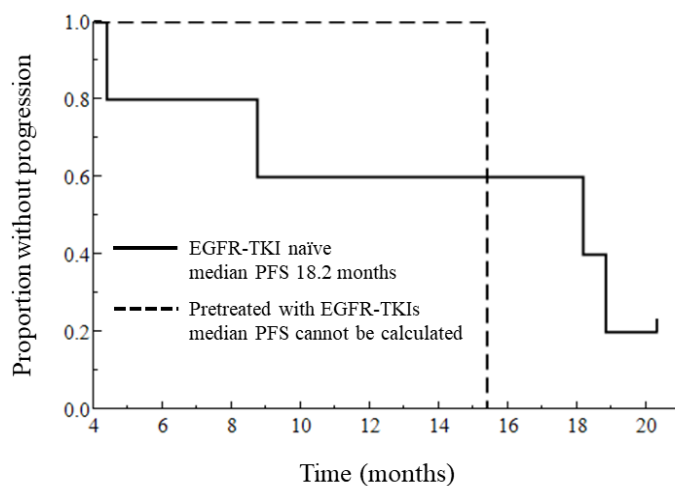


Figure S4 KaplanMeier curves of progression-free survival following afatinib with bevacizumab treatment in patients with EGFR exon 19 deletion.