

Supplementary Table S1 Classification of anticoagulation regimens

Route	Drug	Prophylactic dosing	Therapeutic dosing
Oral	Warfarin	None ^a	Any dose ^a
	Rivaroxaban	10 mg daily ^a	10 mg bid, 15 mg daily, 15 mg bid, 20 mg bid ^a
	Apixaban (GFR ≥30)	2.5 mg bid	5 mg bid
	Apixaban (GFR < 30)	2.5 mg bid	2.5 mg or 5 mg bid
SC	Enoxaparin (GFR ≥30)	≤0.5 mg/kg bid or ≤1.0 mg/kg daily	≥1 mg/kg bid or ≥1.5 mg/kg daily
	Enoxaparin (GFR < 30)	≤0.35 mg/kg bid or ≤0.7 mg/kg daily	≥0.7 mg/kg bid or ≥1 mg/kg daily
	Enoxaparin no weight adjustment	30–60 mg daily	None
	UFH	4,000 IU - 10,000 units bid or tid	None
IV	UFH	None	Any dose
	Bivalirudin	None	Any dose
	Argatroban	None ^b	Any dose ^b
	TPA (tissue plasminogen activator)	None ^b	Any dose ^b
	Desirudin	None ^b	Any dose ^b

Abbreviations: bid, two times a day; GFR, glomerular filtration rate; IV, intravenous; SC, subcutaneous; tid, three times a day; UFH, unfractionated heparin.

^aToo few patients in each category—all collapsed into therapeutic category with warfarin as “Rivwarf” and excluded from most analyses.

^bDeleted due to fewer than 5 patients.

Supplementary Table S2 Drug choice and indication

Therapy	No anticoagulation	Prophylaxis standard dose	Prophylaxis high dose	Therapy	Total
Apixaban	0	554	0	474	1,028 (28.4%)
Enoxaparin	0	748	0	84	832 (23.0%)
Heparin standard	0	796	0	0	796 (22.0%)
Heparin high dose	0	0	176	0	176 (4.9%)
IV heparin	0	0	0	79	79 (2.2%)
Other	0	2	0	73	75 (2.1%)
No anticoagulation	639	0	0	0	639 (17.6%)
Total	639 (17.6%)	2,100 (57.9%)	176 (4.9%)	710 (19.6%)	3,625 (100%)

Abbreviation: IV, intravenous.

Supplementary Table S3 Chosen therapy by first D-dimer within 48 hours of admission

	D-dimer level (µg/mL)				No D-dimer obtained	Total
	< 1	1–3	> 3–10	> 10		
No therapy	105 (13.5%)	116 (11.5%)	57 (12.5%)	38 (13.7%)	323 (29.4%)	639 (17.6%)
Apixaban prophylaxis	211 (27.1%)	264 (26.1%)	26 (5.7%)	17 (6.1%)	36 (3.3%)	554 (15.3%)
Apixaban therapy	59 (7.6%)	128 (12.6%)	166 (36.3%)	77 (27.7%)	44 (4.0%)	474 (13.1%)
Enoxaparin prophylaxis	223 (28.6%)	222 (21.9%)	67 (14.7%)	27 (9.7%)	209 (19.0%)	748 (20.6%)
Enoxaparin therapy	6 (0.8%)	17 (1.7%)	32 (7.0%)	25 (9.0%)	4 (0.4%)	84 (2.3%)
UFH prophylaxis	122 (15.7%)	193 (19.1%)	57 (12.5%)	55 (19.8%)	369 (33.6%)	796 (22.0%)
UFH HD prophylaxis	26 (3.3%)	44 (4.3%)	22 (4.8%)	6 (2.2%)	78 (7.1%)	176 (22.0%)
UFH therapy	9 (1.2%)	17 (1.7%)	17 (3.7%)	28 (10.1%)	8 (0.7%)	79 (2.2%)
Other	18 (2.3%)	12 (1.2%)	13 (2.8%)	5 (1.8%)	27 (2.5%)	75 (2.2%)
Total for D-dimer category	779	1,013	457	278	1,098	3,625
% of Total	21.5%	27.9%	12.6%	7.7%	30.3%	100.0%

Abbreviations: HD, high dose; UFH, unfractionated heparin.

Supplementary Table S4 Logistic regression analysis of variables: adjusted odds ratios for mortality outcome ($n = 2,450$)

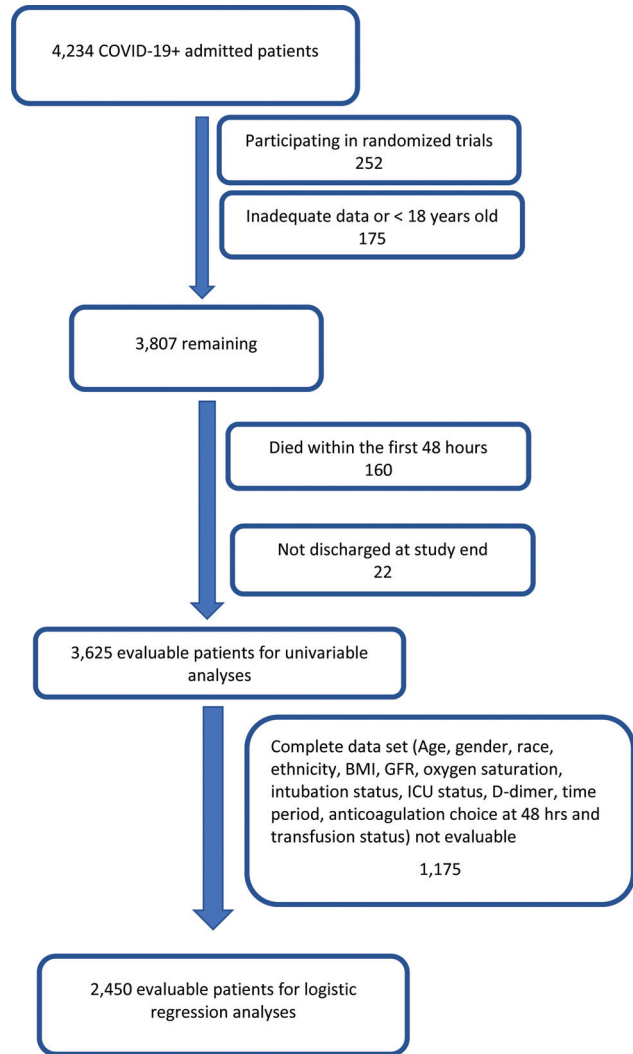
Variable	Odds ratio	95% Confidence interval	p-Value
Age, y			
< 50	1.00		
50–60	2.55	1.44–4.52	0.001
60–70	3.87	2.53–6.66	< 0.001
70–80	5.71	3.32–9.84	< 0.001
≥ 80	8.77	5.04–15.28	< 0.001
Oxygen saturation, %			
> 95%	1.00		
90–95%	1.62	1.22–2.15	0.001
< 90%	2.83	2.12–3.79	< 0.001
eGFR mL/min			
> 60	1.00		
≥ 30–60	1.77	1.32–2.38	< 0.001
15–30	2.68	1.87–3.85	< 0.001
0–15	1.92	1.31–2.81	< 0.001
D-dimer, µg/mL			
< 1	1.00		
1–3	1.61	1.15–2.26	0.005
3–10	1.99	1.35–2.92	< 0.001
≥ 10	2.65	1.74–4.04	< 0.001
Time period			
First time period	1.00		
Wave	0.59	0.45–0.76	< 0.001
Ventilator needed first 48 h			
No ventilator needed	1.00		
Ventilator needed	10.34	6.86–15.61	< 0.001
Medication and regimen, intent type			
No anticoagulation	1.00		
Apixaban prophylaxis	0.52	0.33–0.82	0.005
Apixaban full therapy	0.63	0.42–0.94	0.025
Enoxaparin prophylaxis	0.50	0.33–0.77	0.002
Enoxaparin full therapy	0.96	0.50–1.82	0.90
UFH prophylaxis bid	0.82	0.55 - 1.23	0.34
UFH prophylaxis tid	0.84	0.44–1.61	0.60
UFH full therapy	0.66	0.33–1.34	0.25

Abbreviations: bid, two times a day; eGFR, estimated glomerular filtration rate; tid, three times a day; UFH, unfractionated heparin.
 Note: Adjusted for age, oxygen saturation, eGFR, D-dimer, time period, and ventilator requirement.

Supplementary Table S5 Adjusted mortality per therapeutic modality, stratified by D-dimer (DD): odds ratios and confidence intervals (n = 2,450)

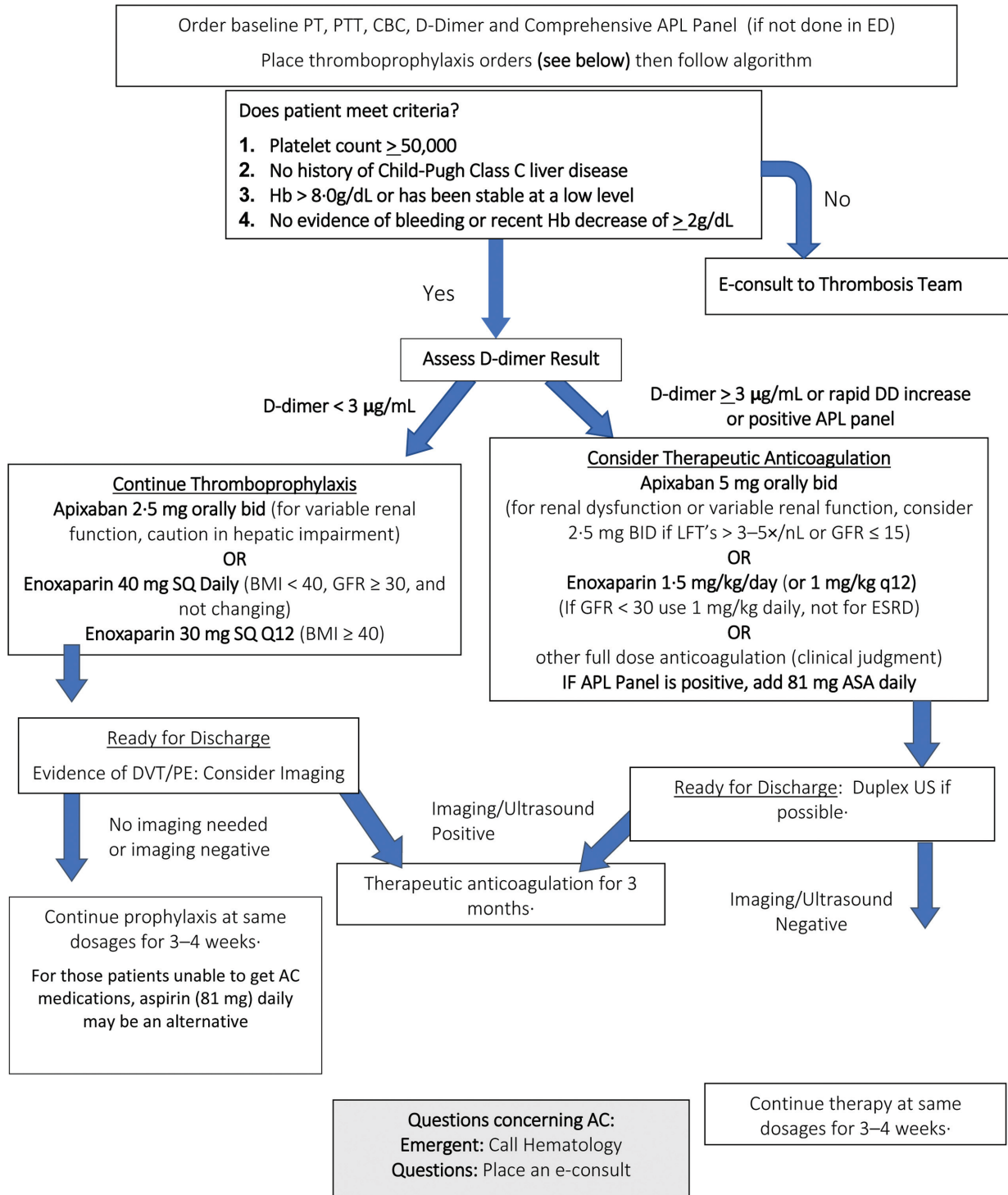
n = 2,450	Apixaban		Enoxaparin		Enoxaparin		UFH		UFH high dose		UFH	
	Prophylaxis	Therapy	Prophylaxis	Therapy	Prophylaxis	Therapy	Prophylaxis	Therapy	Prophylaxis	Therapy	Prophylaxis	Therapy
DD < 1 (n = 751)	0.87 95% CI: 0.26-2.88 p = 0.82	1.72 95% CI: 0.51-5.79 p = 0.38	0.93 95% CI: 0.31-2.81 p = 0.89	5.78 95% CI: 0.49-68.2 p = 0.16	2.20 95% CI: 0.76-6.38 p = 0.15	1.71 95% CI: 0.27-10.86 p = 0.57	2.50 95% CI: 0.32-19.73 p = 0.38	0.49 95% CI: 0.25-0.94 p = 0.033	0.48 95% CI: 0.23-0.97 p = 0.041	0.78 95% CI: 0.36-1.72 p = 0.54	0.15 95% CI: 0.09-0.70 p = 0.0080	0.22 95% CI: 0.05-0.90 p = 0.035
DD 1-<3 (n = 991)	0.44 95% CI: 0.11-1.68 p = 0.23	0.48 95% CI: 0.23-0.97 p = 0.041	0.5 95% CI: 0.26-0.96 p = 0.036	0.95 95% CI: 0.27-3.30 p = 0.93	0.66 95% CI: 0.35-1.23 p = 0.19	0.76 95% CI: 0.28-2.03 p = 0.59	0.36 95% CI: 0.25-3.08 p = 0.85	0.44 95% CI: 0.11-1.68 p = 0.23	0.45 95% CI: 0.17-1.21 p = 0.11	1.02 95% CI: 0.28-3.76 p = 0.97	0.43 95% CI: 0.29-4.44 p = 0.33	0.36 95% CI: 0.25-3.08 p = 0.85
DD 3-<10 (n = 439)	0.25 95% CI: 0.06-1.07 p = 0.061	0.26 95% CI: 0.09-0.70 p = 0.0080	0.15 95% CI: 0.04-0.62 p = 0.0080	0.88 95% CI: 0.26-3.02 p = 0.84	0.81 95% CI: 0.32-2.07 p = 0.66	0.36 95% CI: 0.28-4.44 p = 0.89	0.36 95% CI: 0.25-3.08 p = 0.85	0.25 95% CI: 0.06-1.07 p = 0.061	0.15 95% CI: 0.04-0.62 p = 0.0080	1.02 95% CI: 0.28-3.76 p = 0.97	0.43 95% CI: 0.29-4.44 p = 0.33	0.36 95% CI: 0.25-3.08 p = 0.85
DD ≥ 10 (n = 269)	0.25 95% CI: 0.06-1.07 p = 0.061	0.26 95% CI: 0.09-0.70 p = 0.0080	0.15 95% CI: 0.04-0.62 p = 0.0080	0.88 95% CI: 0.26-3.02 p = 0.84	0.81 95% CI: 0.32-2.07 p = 0.66	0.36 95% CI: 0.28-4.44 p = 0.89	0.36 95% CI: 0.25-3.08 p = 0.85	0.25 95% CI: 0.06-1.07 p = 0.061	0.15 95% CI: 0.04-0.62 p = 0.0080	1.02 95% CI: 0.28-3.76 p = 0.97	0.43 95% CI: 0.29-4.44 p = 0.33	0.36 95% CI: 0.25-3.08 p = 0.85

Abbreviations: CI, confidence interval; eGFR, estimated glomerular filtration rate; UFH, unfractionated heparin.
Note: Adjusted for age, oxygen saturation, eGFR, D-dimer, time period, and ventilator requirement.

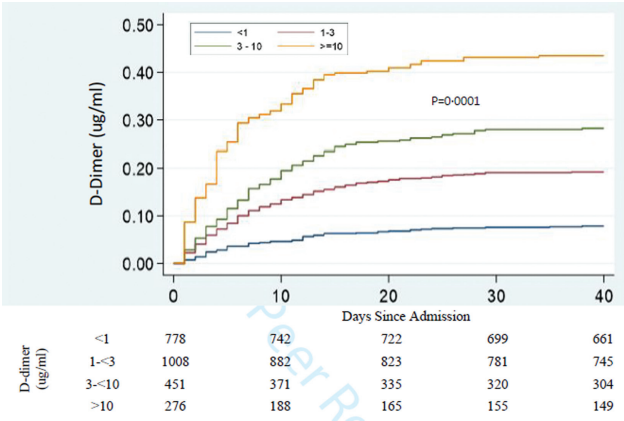


Supplementary Fig. S1 Consort diagram for study.

**MONTEFIORE ANTICOAGULATION PROTOCOL
FOR ADULT COVID-19+ INPATIENTS (Not Critical Care)**



Supplementary Fig. S2 Anticoagulation protocol.



Supplementary Fig. S3 Cumulative mortality according to initial D-dimer value.