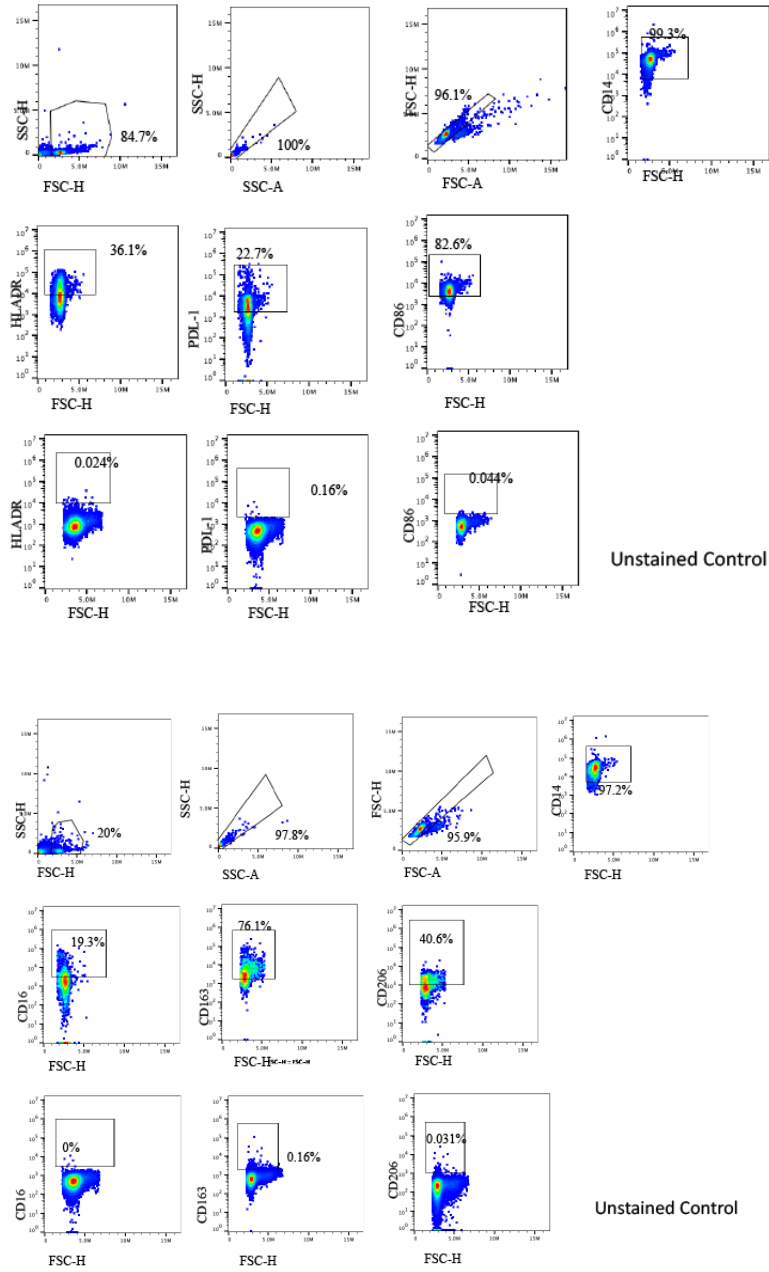
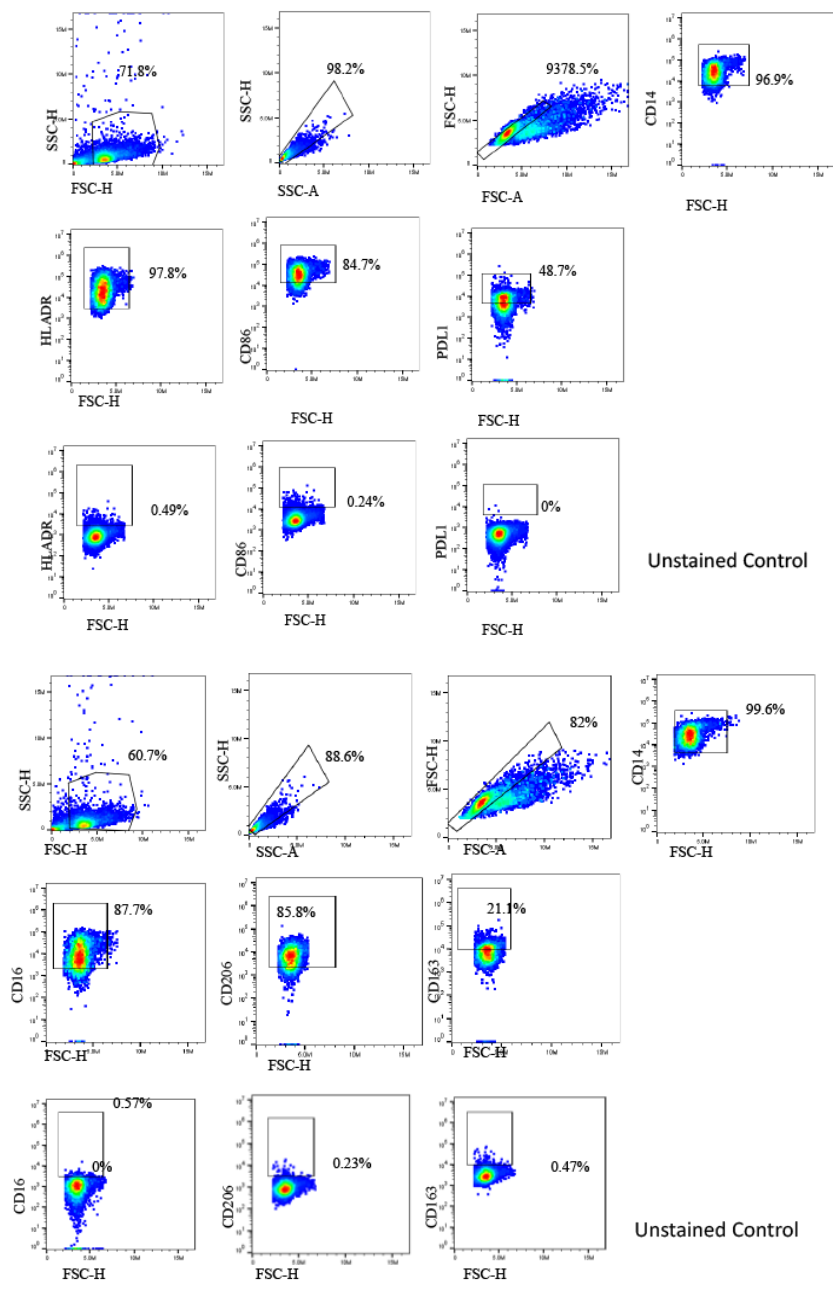


Supplementary Table 1. flow cytometric antibodies used in this study

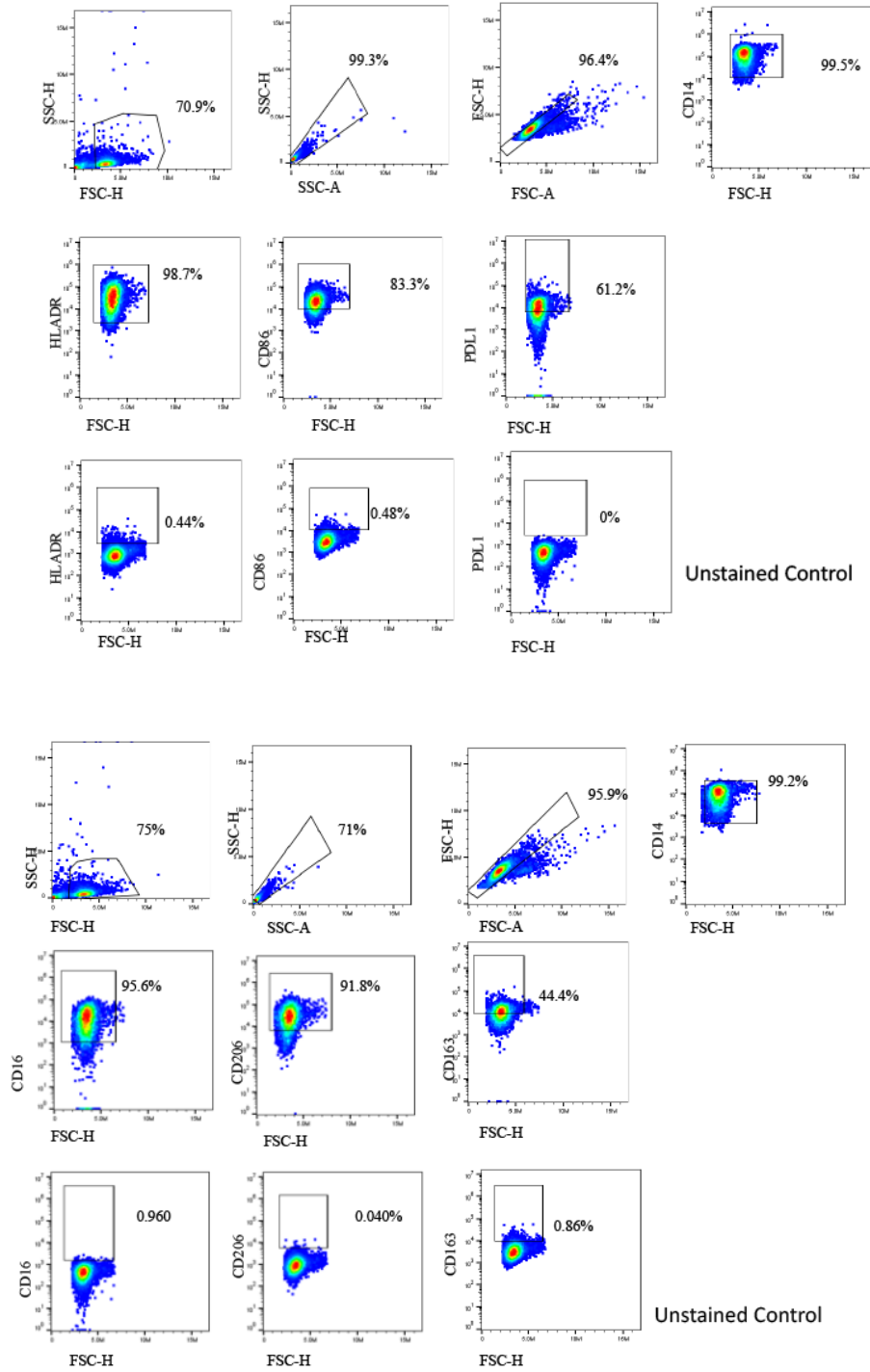
Antibody	FLUOROCHROME	Manufacturer	CLONE#	CATALOG #
CD14	PerCP/ Cy5.5	Biologend	HCD14	325622
CD16	APC	Biologend	3G8	302012
PDL-1	APC	Biologend	29E.2A3	329708
CD163	FITC	Biologend	GHI/61	333618
CD206	PE	Biologend	15-2	321106
HLA-DR	PE	Biologend	LN3	327008
CD86	ALF 488	Biologend	IT2.2	305414



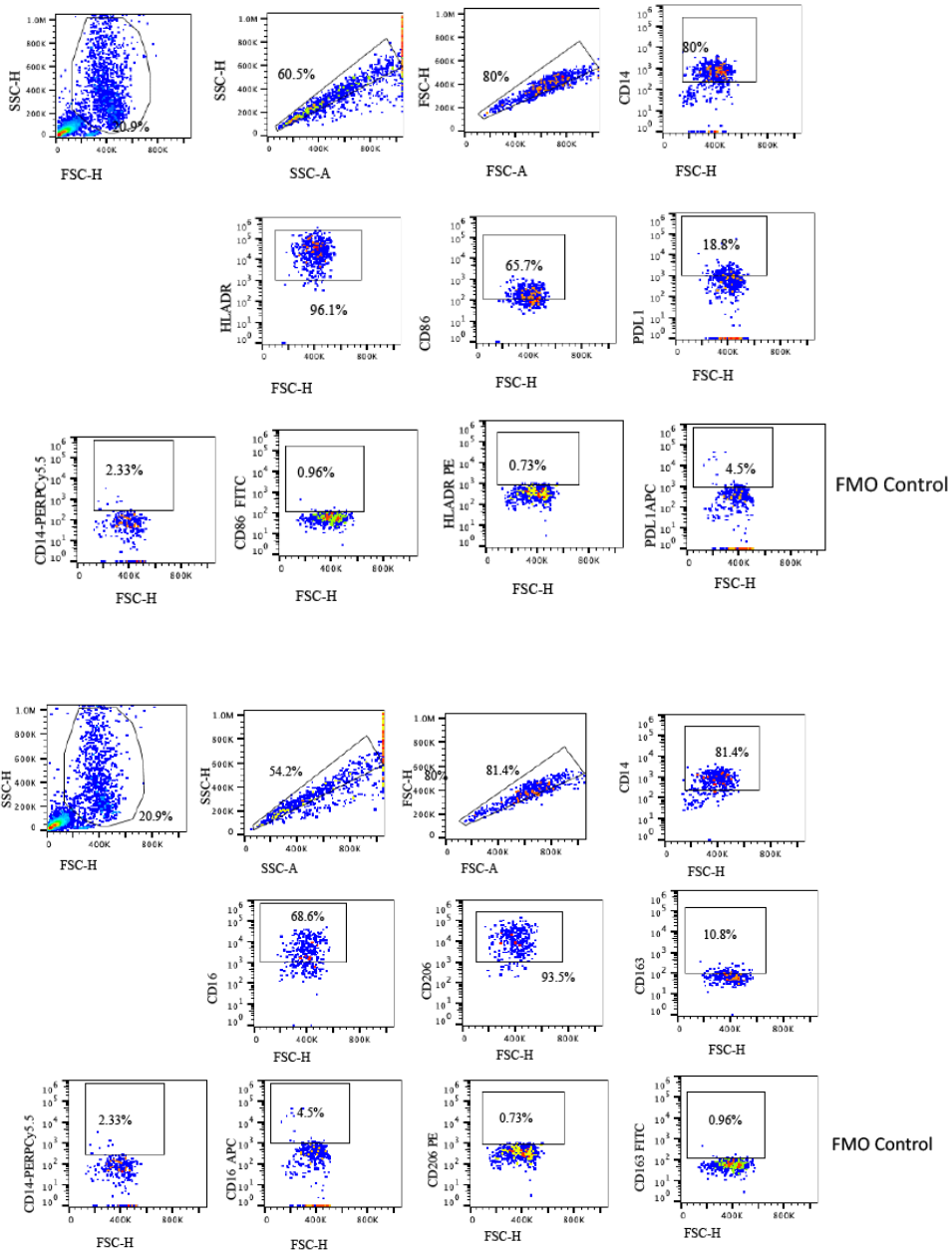
Supplementary Fig. 1. Pseudo plot showing the gating hierarchy in baseline monocytes.



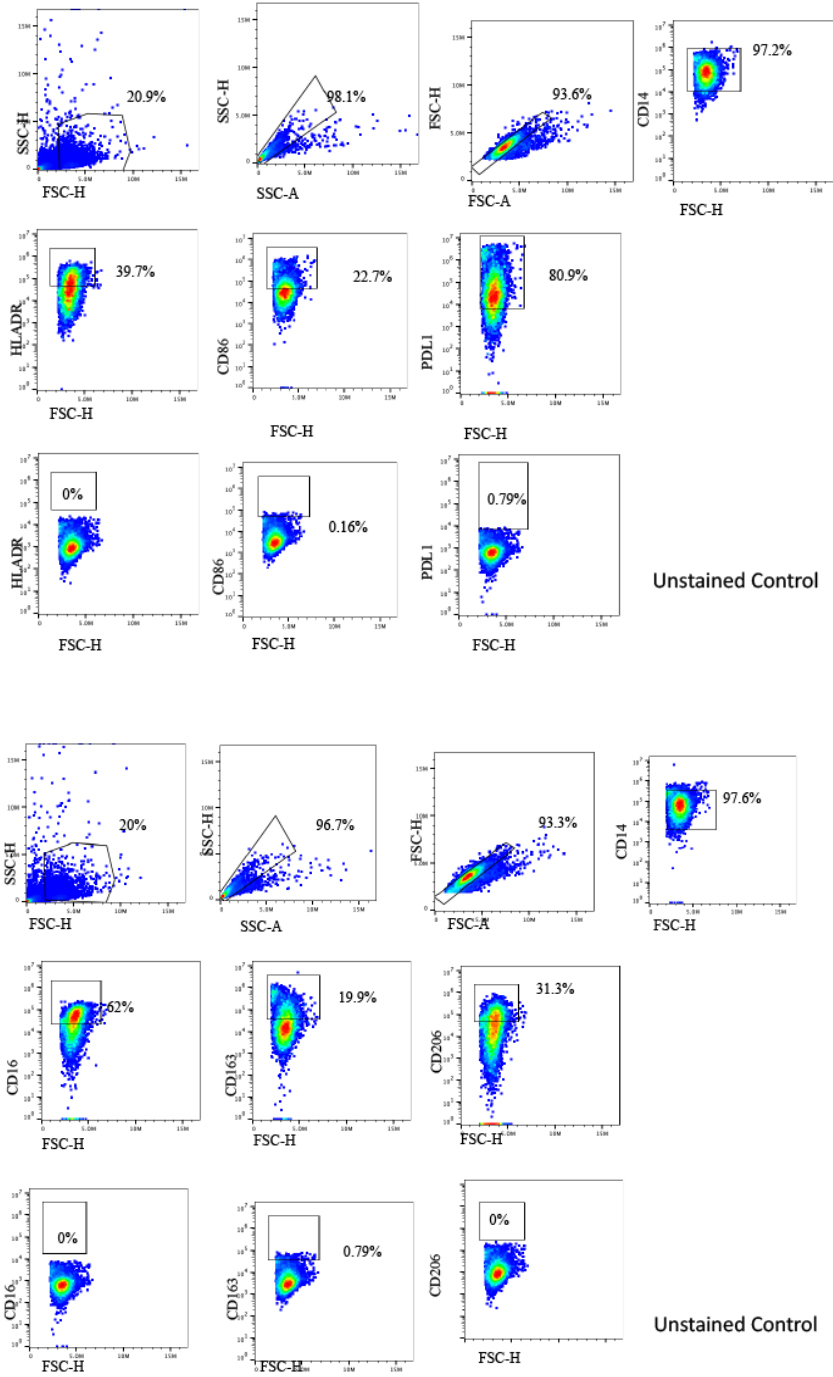
Supplementary Fig. 2. Pseudo plot showing the gating hierarchy when monocytes are cultured on Plastic.



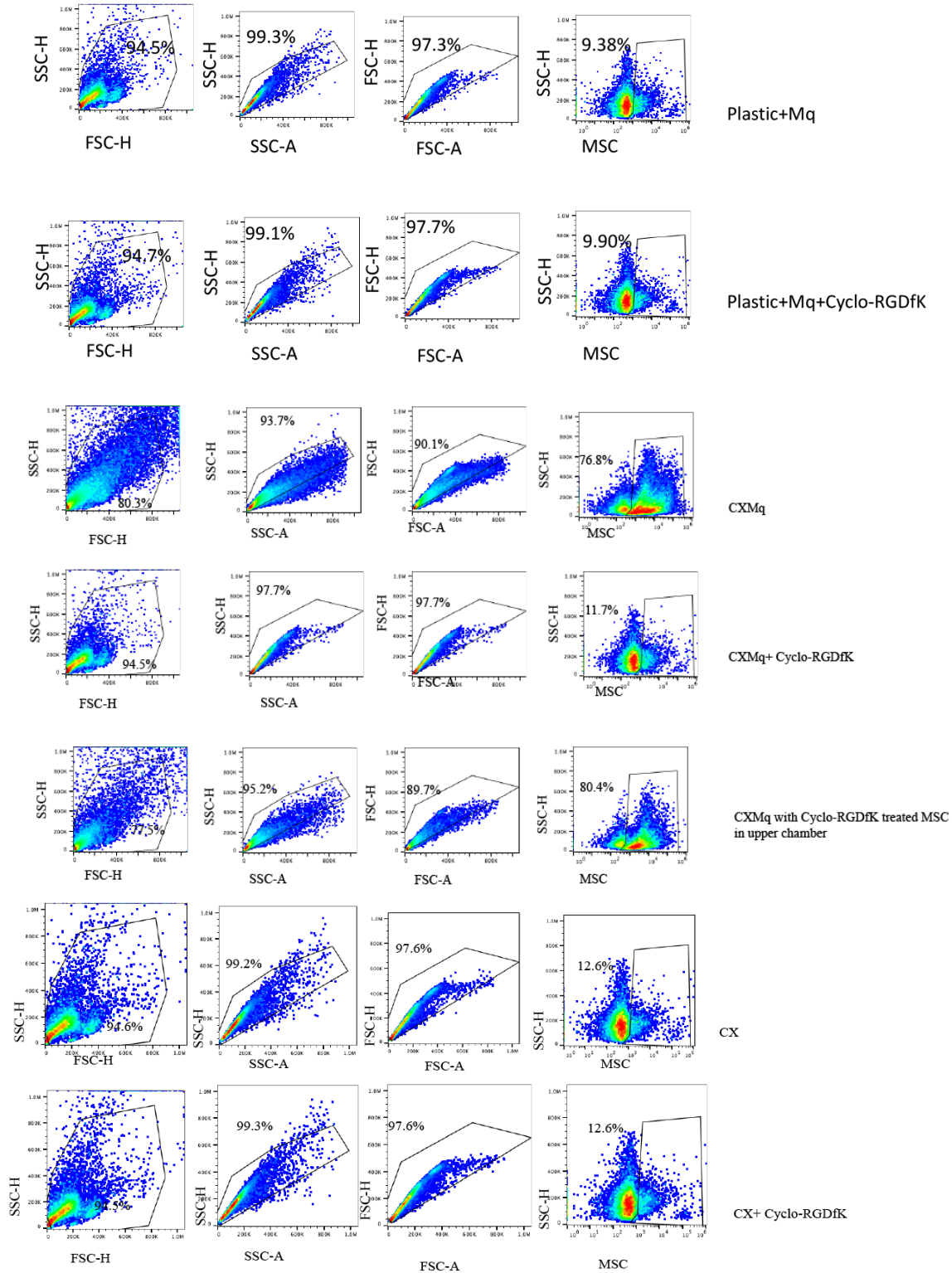
Supplementary Fig. 3. Pseudo plot showing the gating hierarchy when monocytes are cultured on Gelatin.



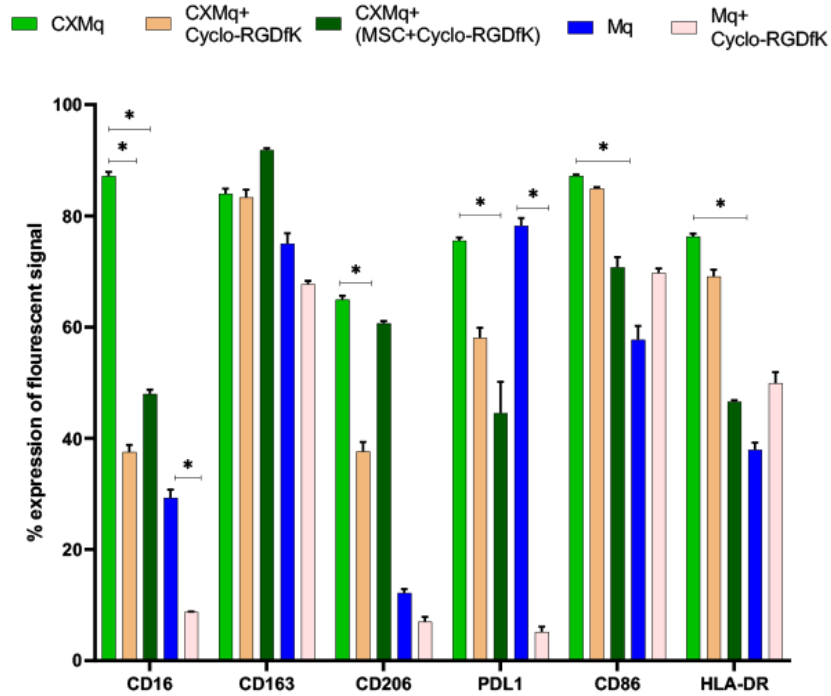
Supplementary Fig. 4. Pseudo plot showing the gating hierarchy when monocytes are cultured on Fibronectin.



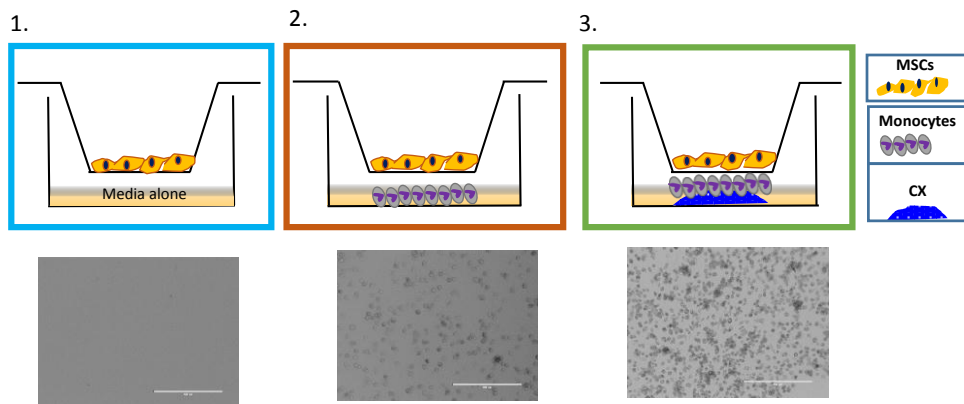
Supplementary Fig. 5. Pseudo plot showing the gating hierarchy when monocytes are cultured on CX.



Supplementary Fig. 6. Pseudo plots shows the gating strategy of the CXMq/ MSC treated with and without α V β 3 inhibitor.



Supplemental Fig. 7. Bar graph showing the expression of M1 and M2 like markers after 22 hours post migration.



Supplemental Fig. 8. Schematic diagram of migration assay set up— only media in the lower chamber as negative control (1st panel), only macrophages (2nd panel), and cardiac fibroblast derived matrix-educated macrophages (3rd Panel). Phase contrast images show cells that migrated to the lower chamber after 22h. Scale bar =100 μ m.