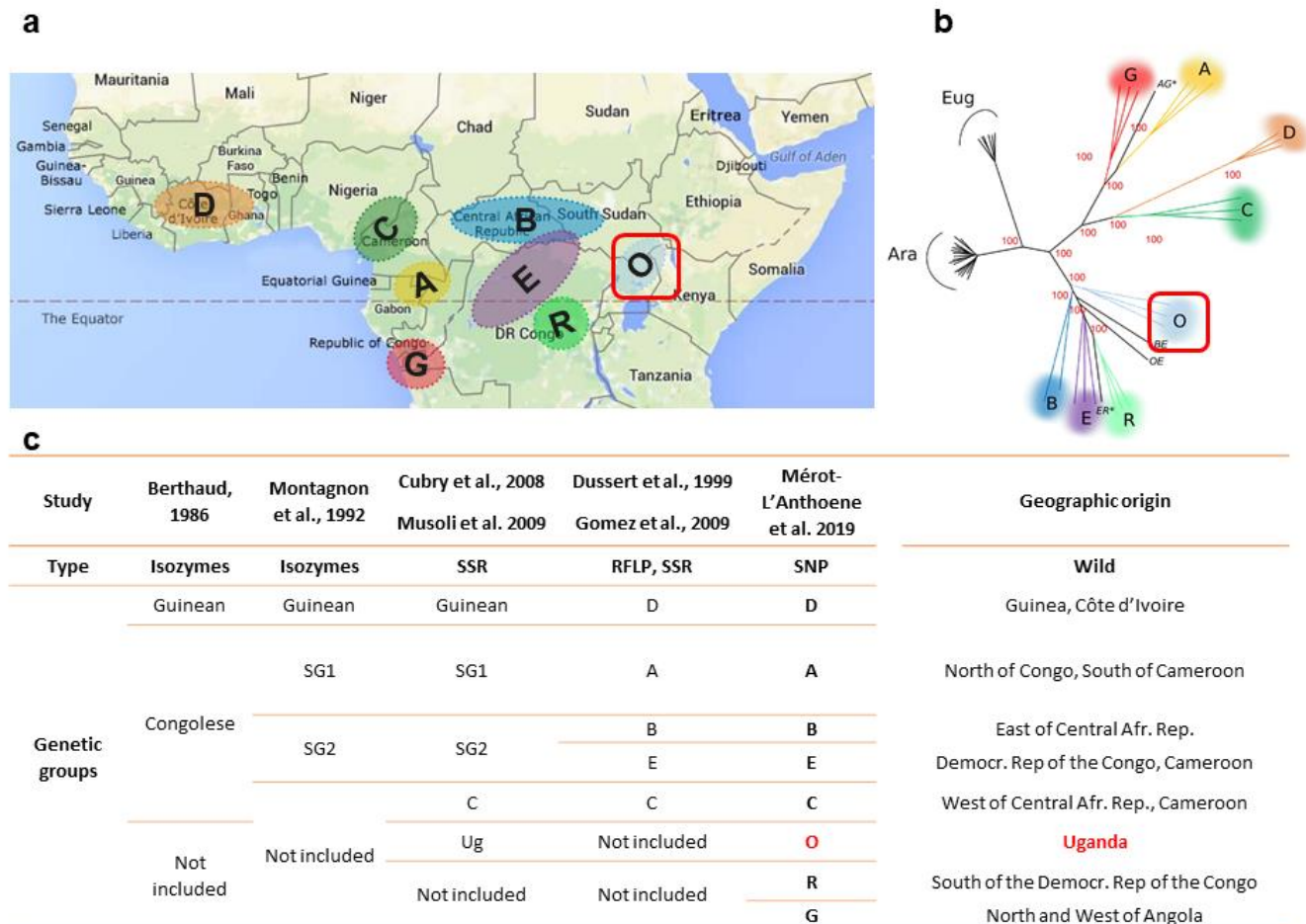


Supplementary figure S1. Eight divergent genetic groups of *C. canephora* and their geographical distribution (adapted from Merot-L'anthoene et al., 2019): **A-** Geographical distribution of eight genetic groups, **B-** A neighbor-joining tree based on Euclidean distance between the eight a priori groups of *C. canephora* and accessions of *C. arabica* and *C. eugenioides*, **C-** Summary table of the historical definition of *C. canephora* genetic groups with the references and the marker types in use. Ugandan group is highlighted in red.



Berthaud J. Les ressources génétiques pour l'amélioration des caféiers africains diploïdes. Collection Travaux et documents. Montpellier, France: Orstom; 1986.

Montagnon C, Leroy T, Yapo A. Genotypic and phenotypic diversity of some coffee groups (*Coffea Canephora* Pierre) in the collections - consequences on their use in breeding. *Cafe Cacao* The. 1992;36: 187–198.

Cubry P, Musoli P, Legnate H, Pot D, de Bellis F, Poncet V, et al. Diversity in coffee assessed with SSR markers: structure of the genus *Coffea* and perspectives for breeding. *Genome*. 2008;51. doi:10.1139/g07-096

Musoli P, Cubry P, Aluka P, Billot C, Dufour M, De Bellis F, et al. Genetic differentiation of wild and cultivated populations: diversity of *Coffea canephora* Pierre in Uganda. *Genome*. 2009;52: 634–46.

Dussert S, Lashermes P, Anthony F, Montagnon C, Trouslot P, Combes MC, et al. Coffee, *Coffea canephora*. In: Hamon P, Seguin M, Perrier X, Glaszmann J-C, editors. Diversité génétique des plantes tropicales cultivées. Montpellier, France: CIRAD; 1999. pp. 175–794.

Gomez C, Dussert S, Hamon P, Hamon S, de Kochko A, Poncet V. Current genetic differentiation of *Coffea canephora* Pierre ex A. Froehn in the Guineo-Congolian African zone: cumulative impact of ancient climatic changes and recent human activities. *BMC evolutionary biology*. 2009;9: 167. doi:10.1186/1471-2148-9-167

Mérot-L'Anthoene V, Tournebize R, Darracq O, Rattina V, Lepelley M, Bellanger L, et al. Development and evaluation of a genome-wide Coffee 8.5K SNP array and its application for high-density genetic mapping and for investigating the origin of *Coffea arabica* L. Plant biotechnology journal. 2019. doi:10.1111/pbi.13066