

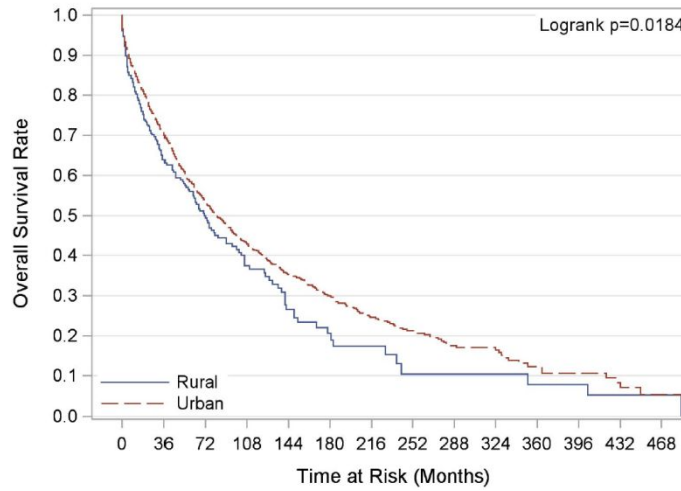
Supplementary Tables:**Supplementary Table 1:** Univariate Cox proportional hazards regression model highlighting OS in NET patient population

Variable		Hazard ratio	95% Confidence Interval (CI)	p-value
Grade (III/IV) vs. grade (I/II)		4.61	4.17 – 5.08	<0.001
Staging	Regional vs. localized	2.03	1.95 – 2.12	<0.001
	Distant vs. localized	5.55	5.34 – 5.78	<0.001
Female vs. male		0.87	0.85 – 0.90	<0.001
Uninsured vs. insured		1.67	1.60 – 1.74	0.132
Marital status (single vs. married)		1.24	1.20 – 1.28	<0.001
Rural vs. urban		1.22	1.16 – 1.28	<0.001

Supplementary Table 2: Univariate Cox proportional hazards regression model highlighting DSS in NET patient population

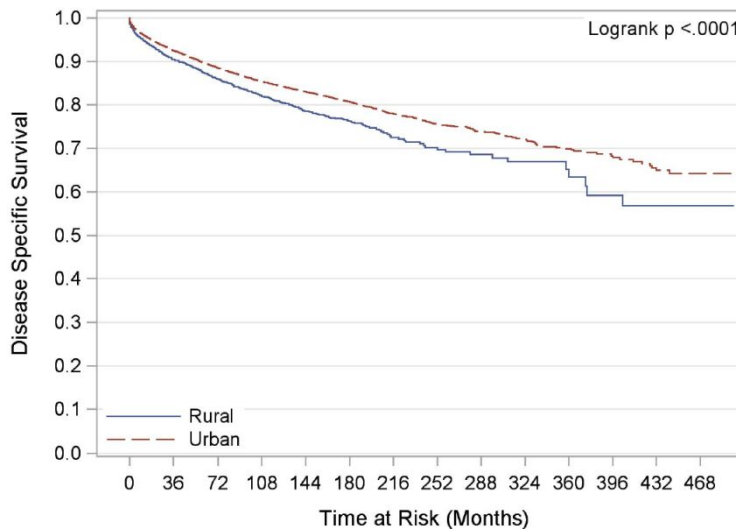
Variable		Hazard ratio	95% Confidence Interval (CI)	p-value
Grade (III/IV) vs. grade (I/II)		7.83	6.98 – 8.79	<0.001
Staging	Regional vs. localized	5.09	4.72 – 5.49	<0.001
	Distant vs. localized	20.45	19.14 – 21.85	<0.001
Female vs. male		0.87	0.83 – 0.91	<0.001
Uninsured vs. insured		1.45	1.14 – 1.83	0.002
Marital status (single vs. married)		1.05	1.00 – 1.09	0.051
Rural vs. urban		1.23	1.15 – 1.31	<0.001

Supplementary Figures:



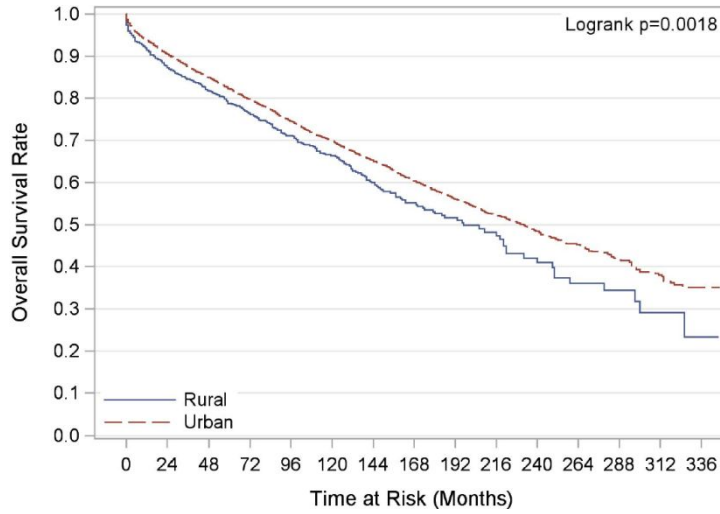
Strata	3-yr Surv.Rate (95% CI)	5-yr Surv.Rate (95% CI)	Median Surv. (95% CI)
Total	0.70 (0.68, 0.71)	0.58 (0.56, 0.60)	79.0 (73.0, 88.0)
Rural	0.64 (0.58, 0.69)	0.56 (0.50, 0.62)	71.0 (58.0, 90.0)
Urban	0.71 (0.69, 0.72)	0.58 (0.56, 0.60)	81.0 (76.0, 90.0)

Supplementary figure 1: Unadjusted Kaplan-Meier OS curve for pancreatic NET patients in rural versus urban region



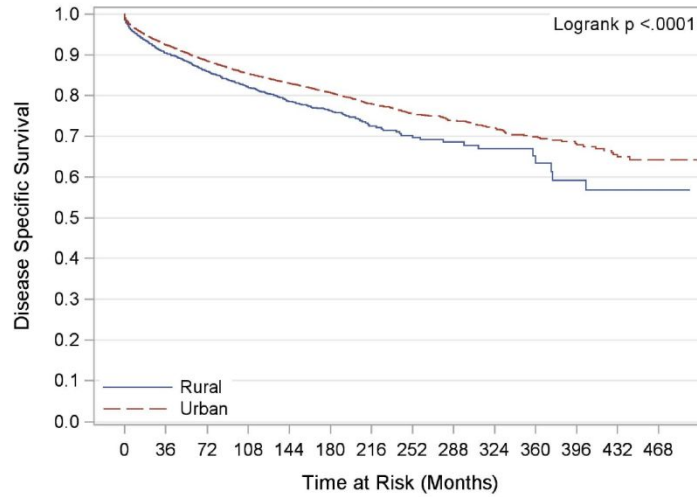
Strata	3-yr Surv.Rate (95% CI)	5-yr Surv.Rate (95% CI)	Median Surv. (95% CI)
Total	0.74 (0.72, 0.75)	0.63 (0.61, 0.65)	106.0 (94.0, 120.0)
Rural	0.69 (0.64, 0.74)	0.62 (0.55, 0.67)	83.0 (70.0, 124.0)
Urban	0.75 (0.73, 0.76)	0.64 (0.62, 0.66)	109.0 (95.0, 122.0)

Supplementary figure 2: Unadjusted Kaplan-Meier DSS curve for pancreatic NET patients in rural versus urban region



Strata	3-yr Surv.Rate (95% CI)	5-yr Surv.Rate (95% CI)	Median Surv. (95% CI)
Total	0.87 (0.87, 0.88)	0.82 (0.81, 0.83)	228.0 (218.0, 238.0)
Rural	0.85 (0.82, 0.87)	0.79 (0.76, 0.81)	197.0 (170.0, 222.0)
Urban	0.88 (0.87, 0.88)	0.82 (0.81, 0.83)	232.0 (221.0, 242.0)

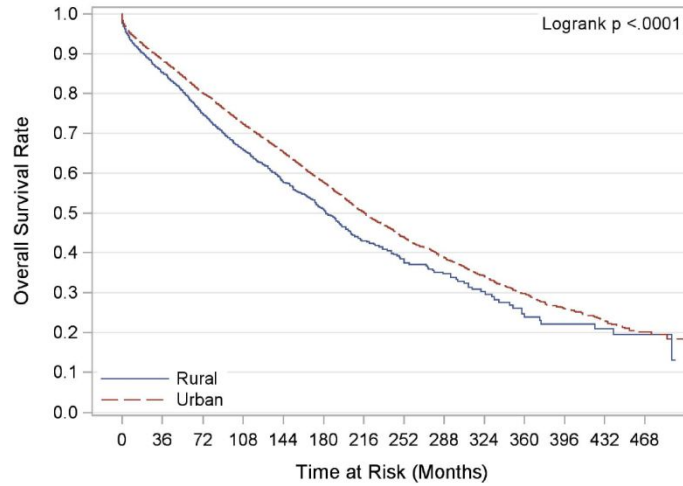
Supplementary figure 3: Unadjusted Kaplan-Meier OS curve for pulmonary NET patients in rural versus urban region



Strata	3-yr Surv.Rate (95% CI)	5-yr Surv.Rate (95% CI)	Median Surv. (95% CI)
Total	0.92 (0.92, 0.93)	0.90 (0.89, 0.90)	NR (NR, NR)
Rural	0.90 (0.87, 0.92)	0.87 (0.84, 0.89)	NR (NR, NR)
Urban	0.92 (0.92, 0.93)	0.90 (0.89, 0.91)	NR (NR, NR)

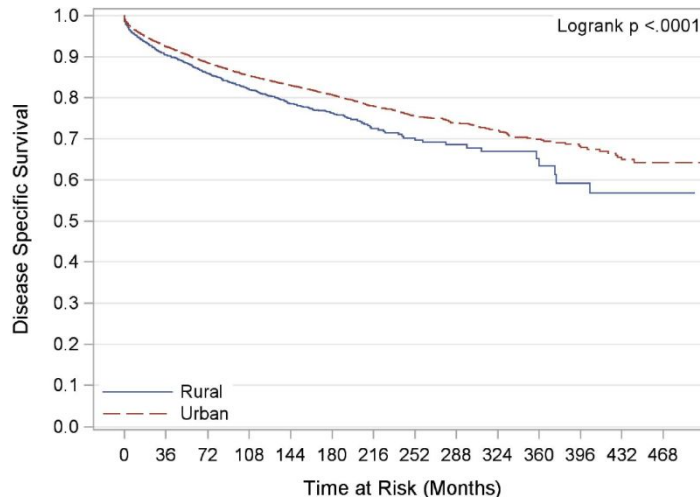
Supplementary figure 4: Unadjusted Kaplan-Meier DSS curve for pulmonary NET patients in rural versus urban region

1
2
3
4
5
6
7
8
9
10
11
12
13
14
15
16
17
18
19
20
21
22
23
24
25
26
27
28
29
30
31
32
33
34
35
36
37
38
39
40
41
42
43
44
45
46
47
48
49
50
51
52
53
54
55
56
57
58
59
60



Strata	3-yr Surv.Rate (95% CI)	5-yr Surv.Rate (95% CI)	Median Surv. (95% CI)
Total	0.88 (0.88, 0.89)	0.83 (0.82, 0.83)	214.0 (208.0, 218.0)
Rural	0.85 (0.84, 0.87)	0.79 (0.77, 0.80)	182.0 (173.0, 195.0)
Urban	0.89 (0.88, 0.89)	0.83 (0.83, 0.84)	217.0 (211.0, 222.0)

Supplementary figure 5: Unadjusted Kaplan-Meier OS curve for gastrointestinal NET patients in rural versus urban region



Strata	3-yr Surv.Rate (95% CI)	5-yr Surv.Rate (95% CI)	Median Surv. (95% CI)
Total	0.94 (0.94, 0.94)	0.92 (0.91, 0.92)	NR (NR, NR)
Rural	0.93 (0.92, 0.93)	0.90 (0.89, 0.91)	NR (NR, NR)
Urban	0.94 (0.94, 0.95)	0.92 (0.92, 0.92)	NR (NR, NR)

Supplementary figure 6: Unadjusted Kaplan-Meier DSS curve for gastrointestinal NET patients in rural versus urban region