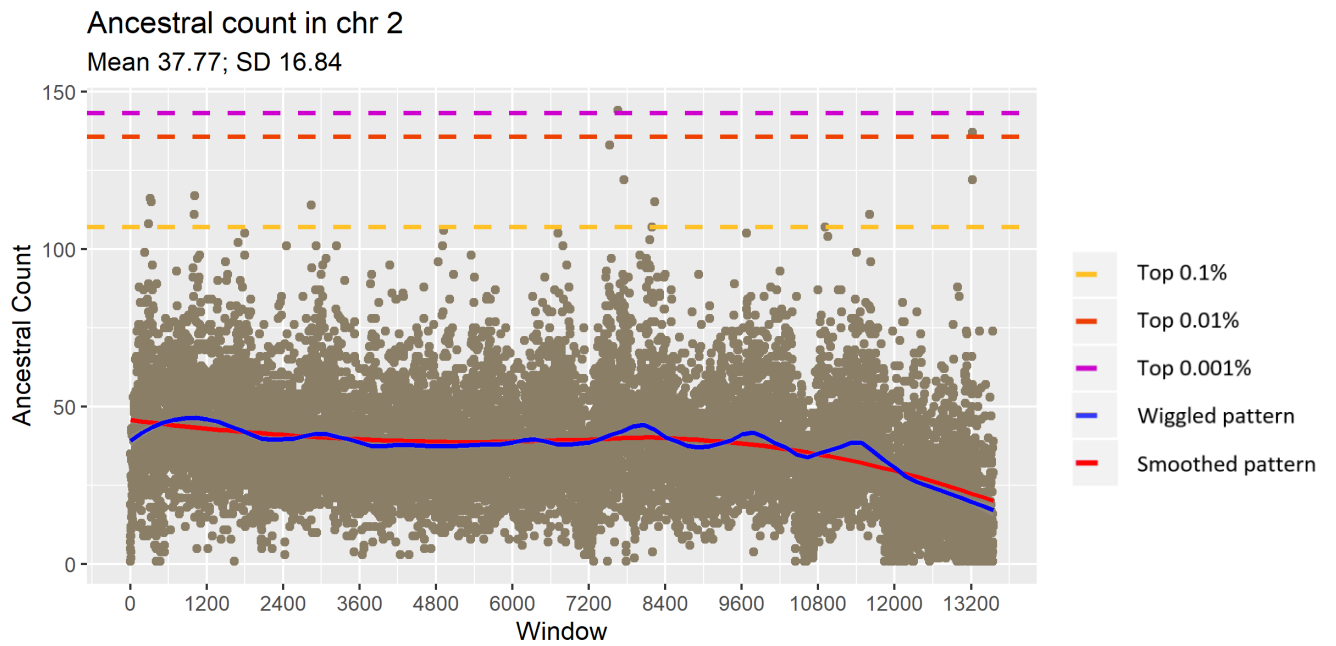
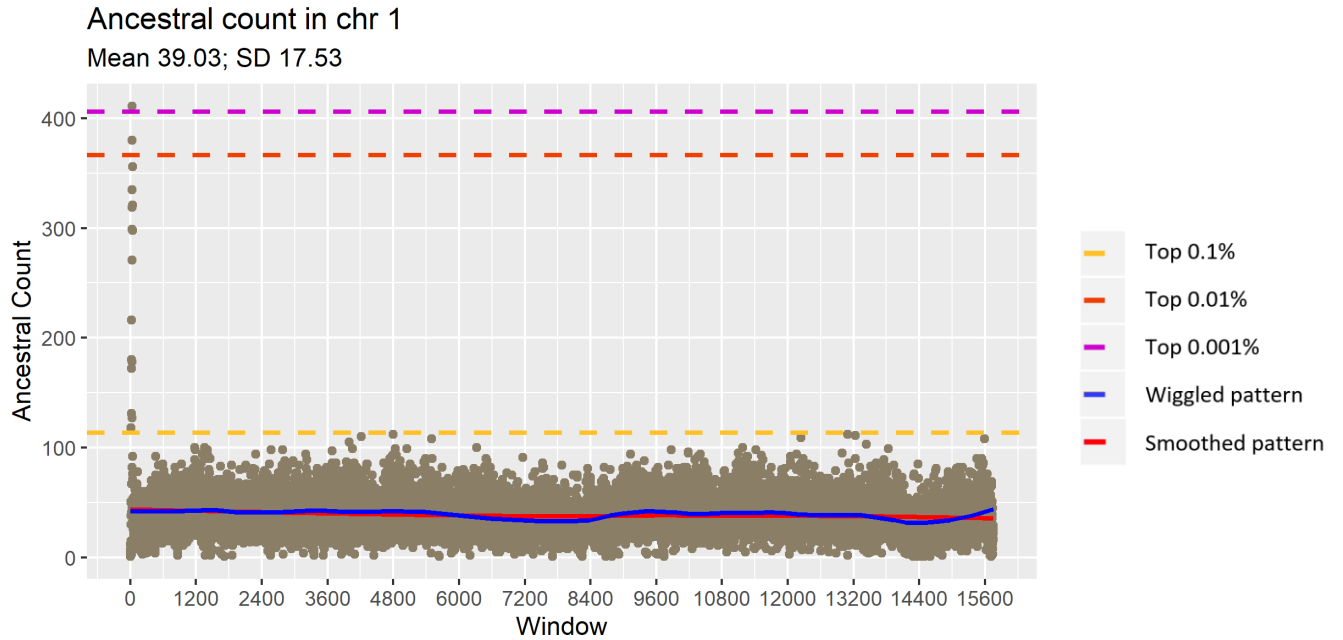


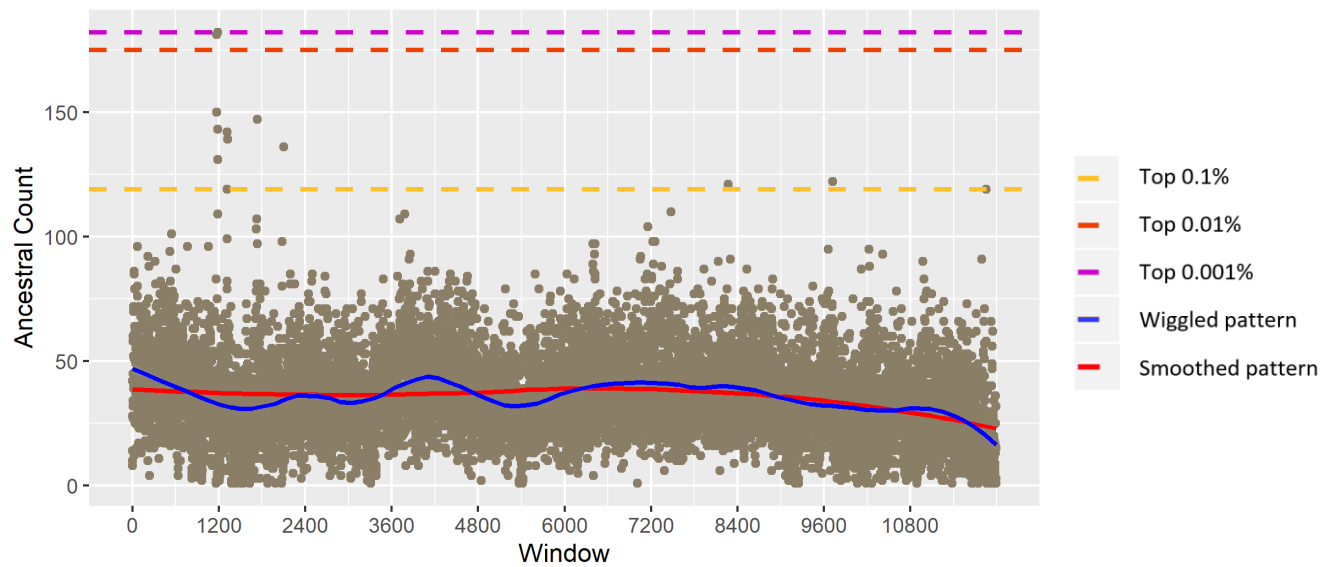
Additional files 3. Distribution of ancestral allele in all chromosomes of taurine (page 1-15) and zebu (15-29)

Taurine cattle



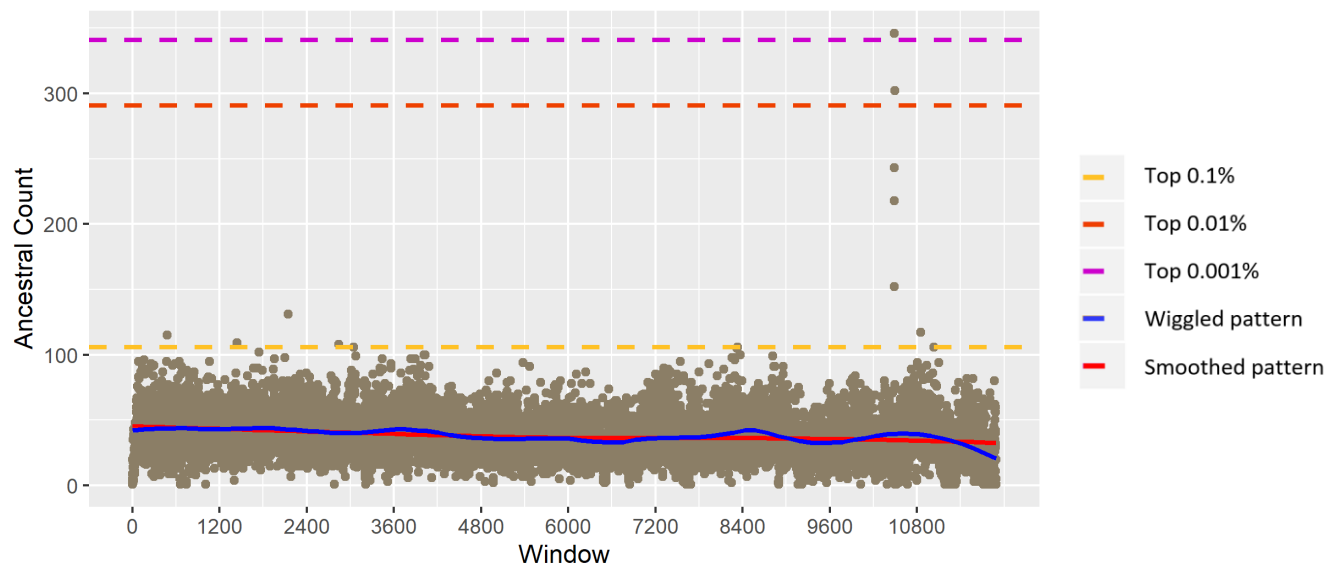
### Ancestral count in chr 3

Mean 35.68; SD 16.44



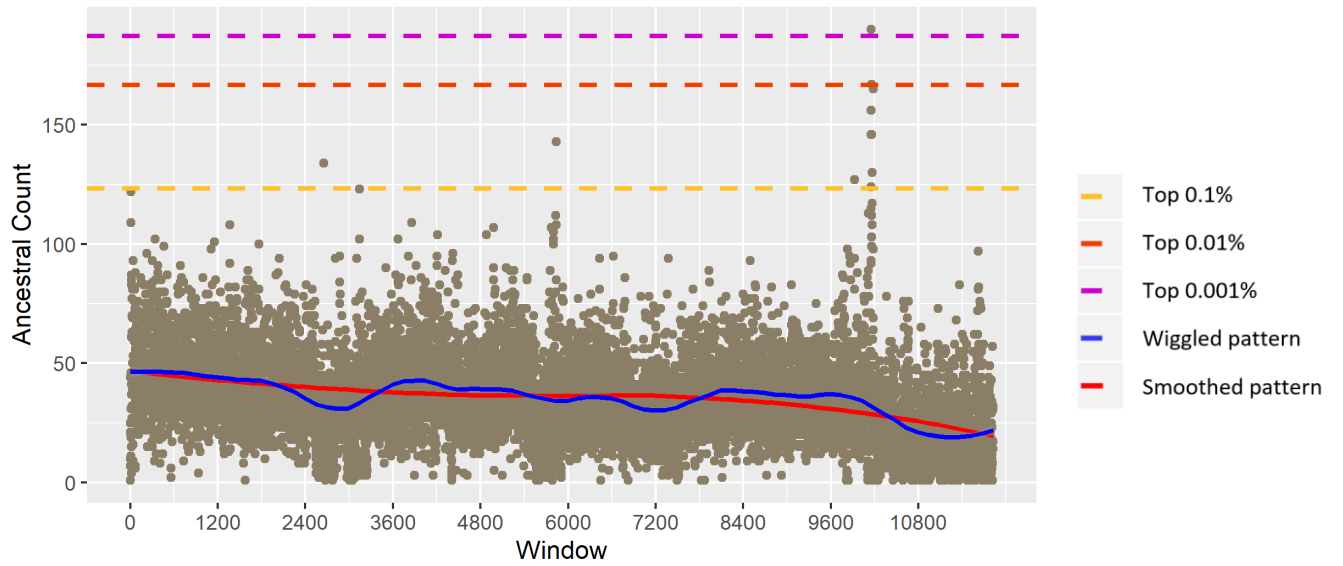
### Ancestral count in chr 4

Mean 38.28; SD 16.83



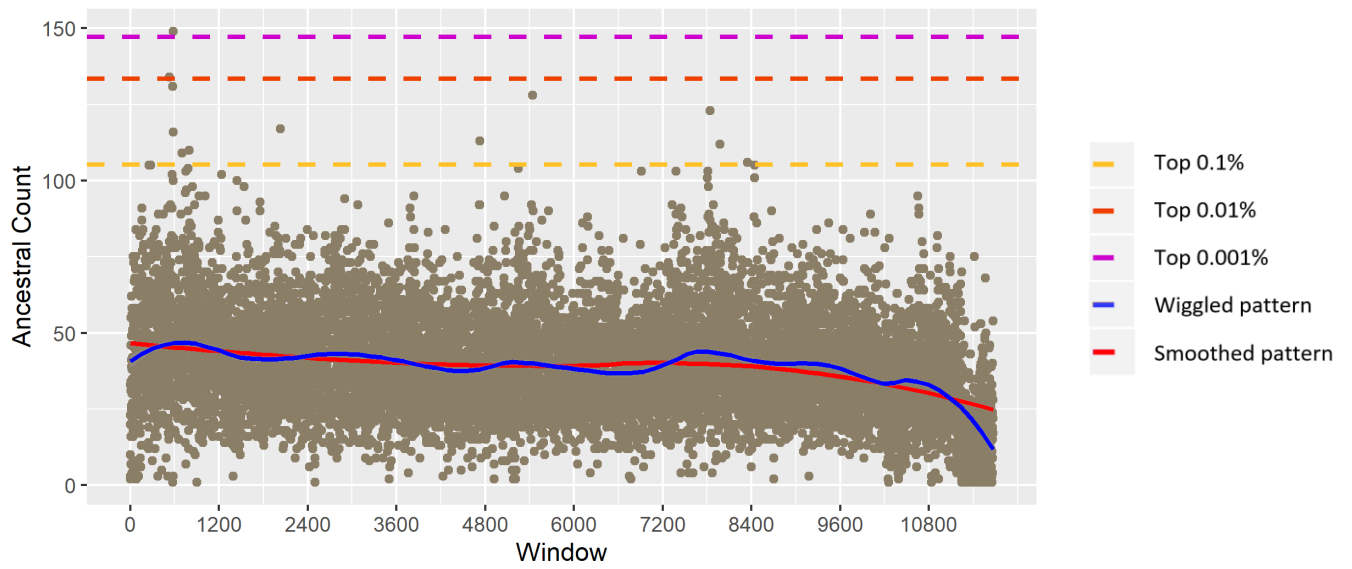
### Ancestral count in chr 5

Mean 35.81; SD 17.52



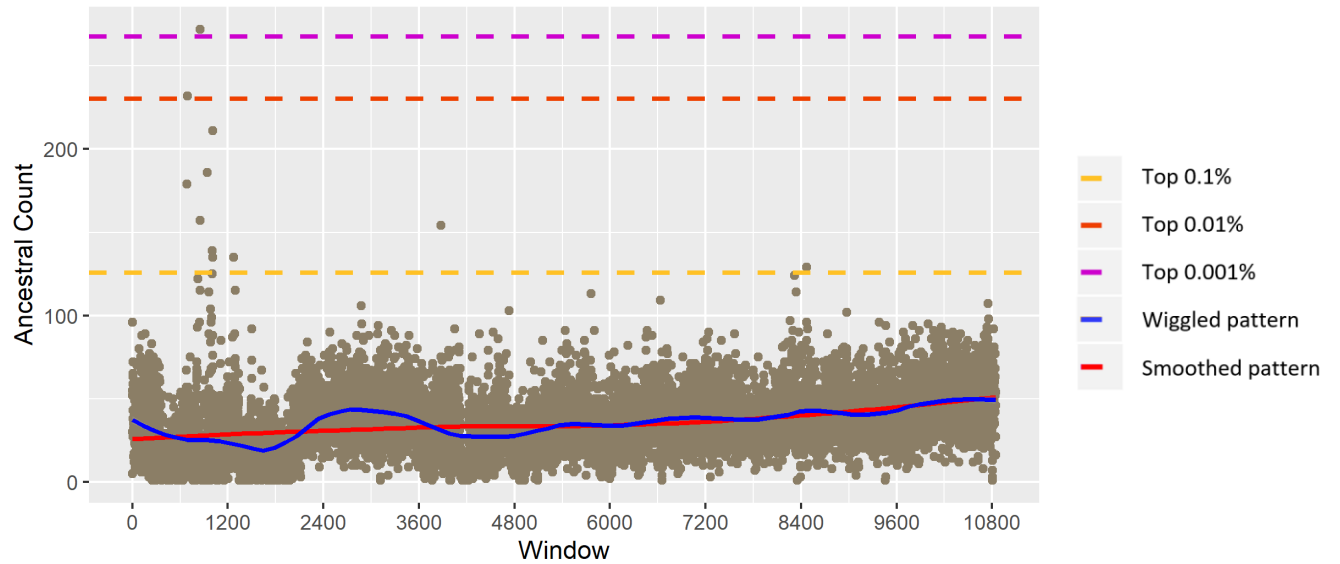
### Ancestral count in chr 6

Mean 39.22; SD 16.13



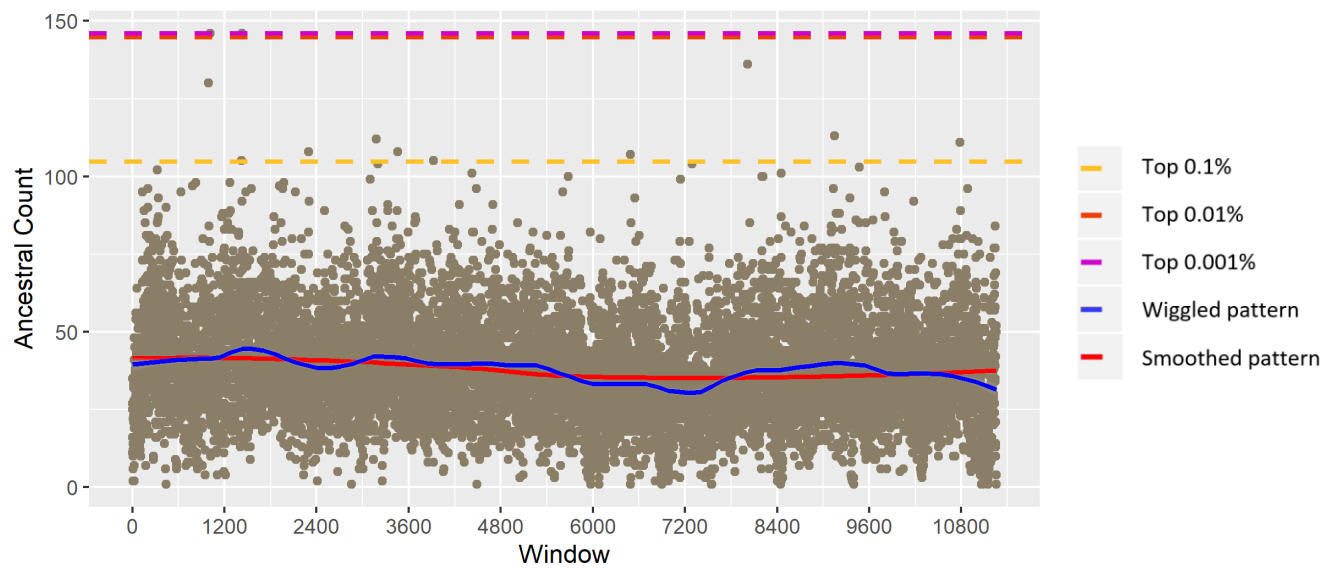
### Ancestral count in chr 7

Mean 35.65; SD 18.61



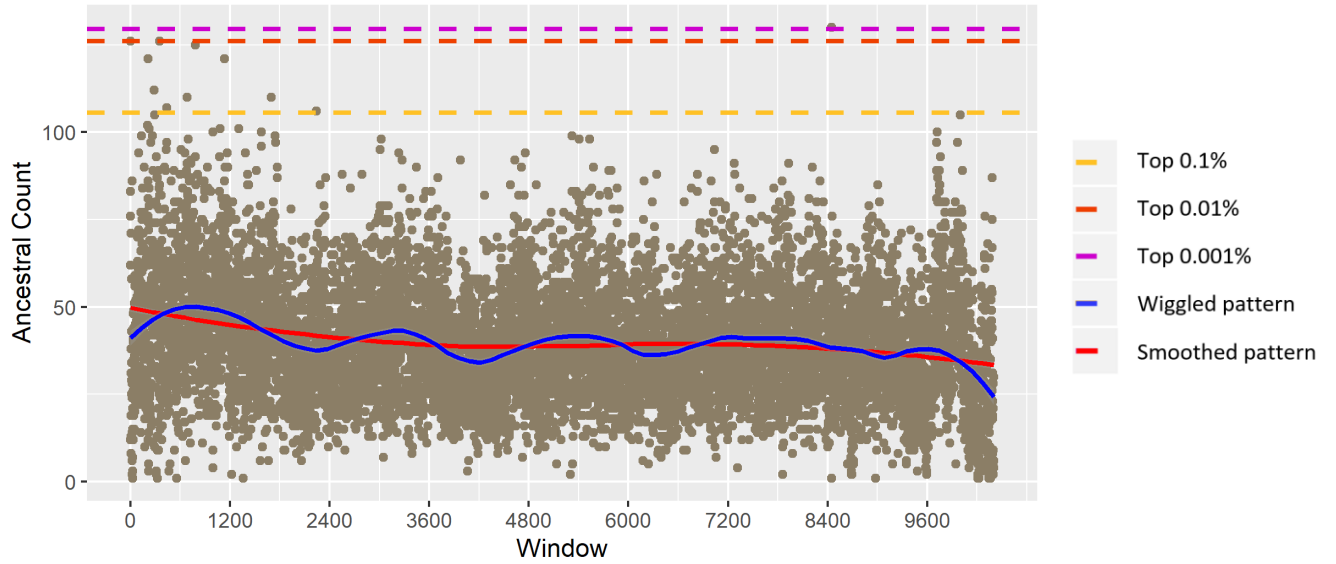
### Ancestral count in chr 8

Mean 38.04; SD 15.98



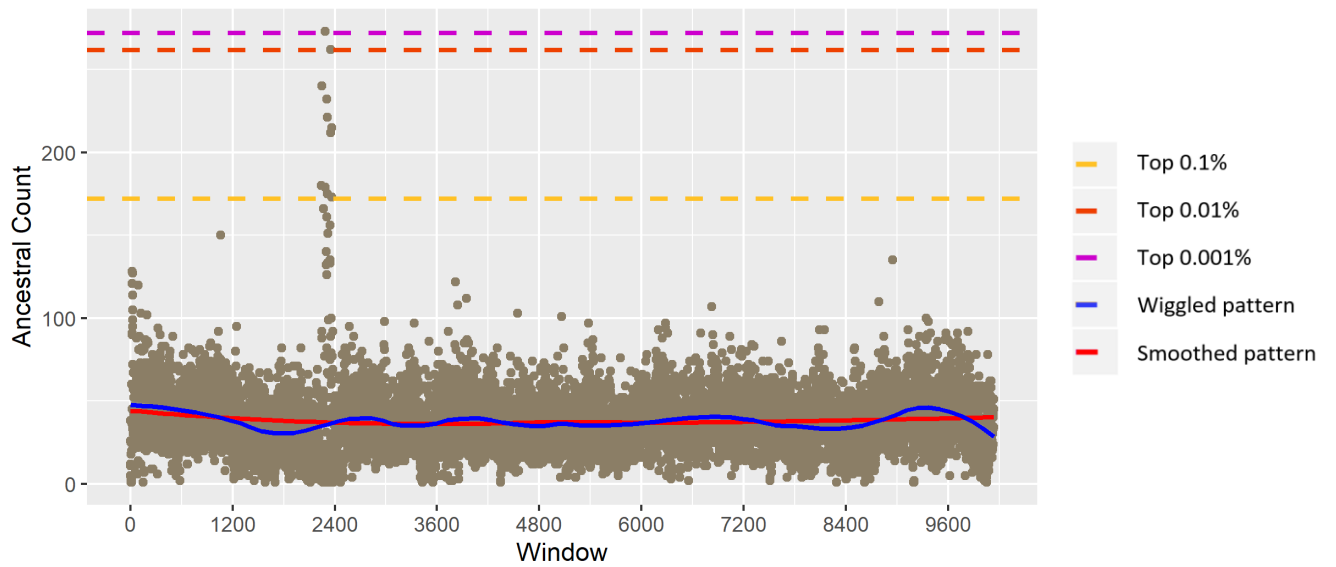
### Ancestral count in chr 9

Mean 40.06; SD 16.17



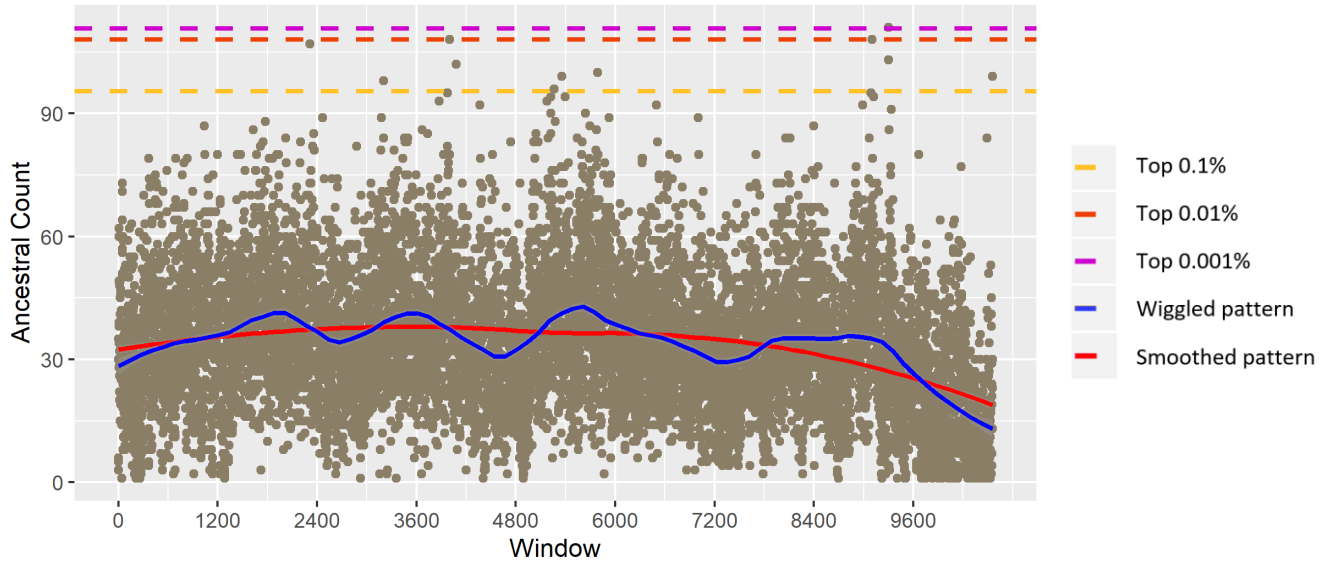
### Ancestral count in chr 10

Mean 37.87; SD 17.65



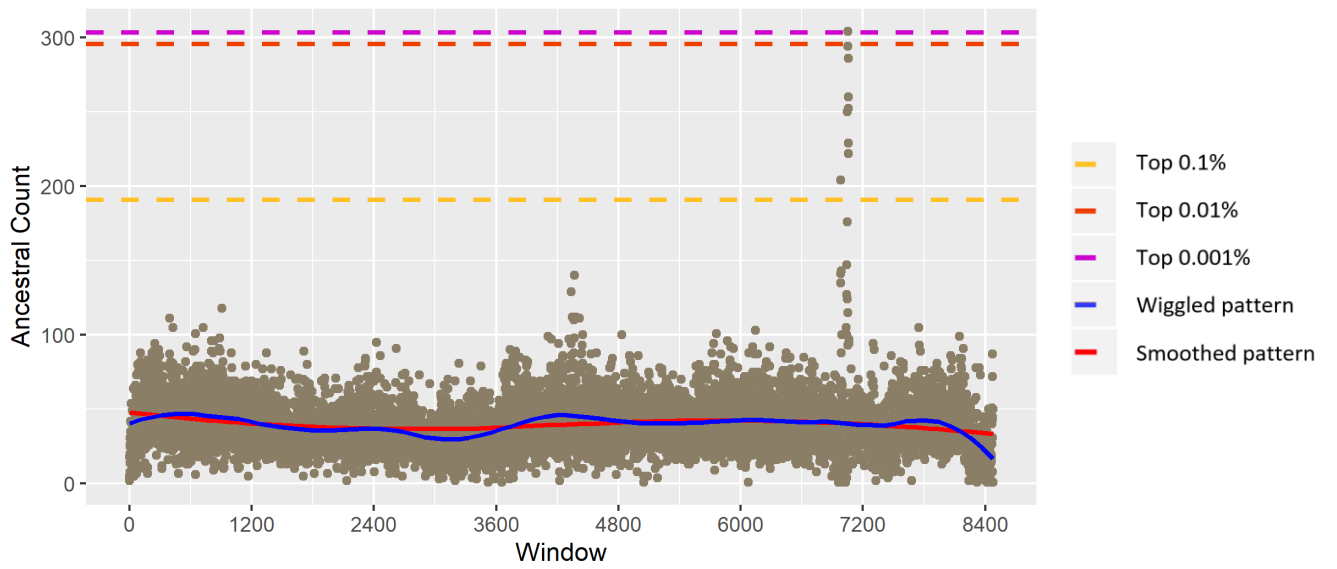
### Ancestral count in chr 11

Mean 34.1; SD 16.31



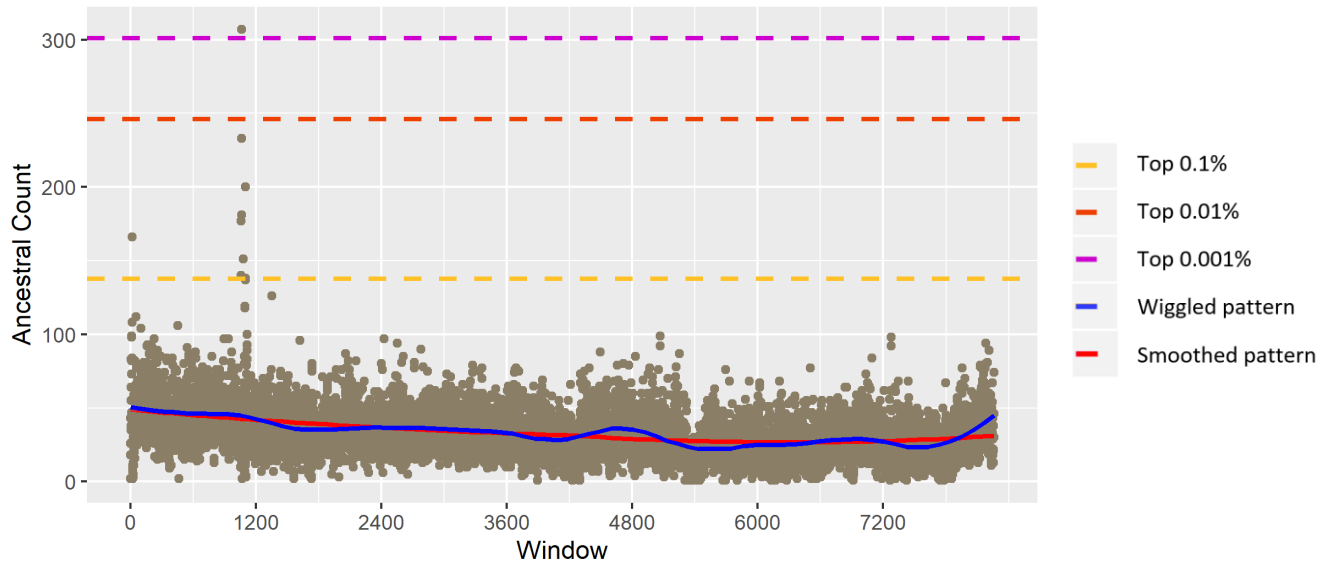
### Ancestral count in chr 12

Mean 39.8; SD 18.28



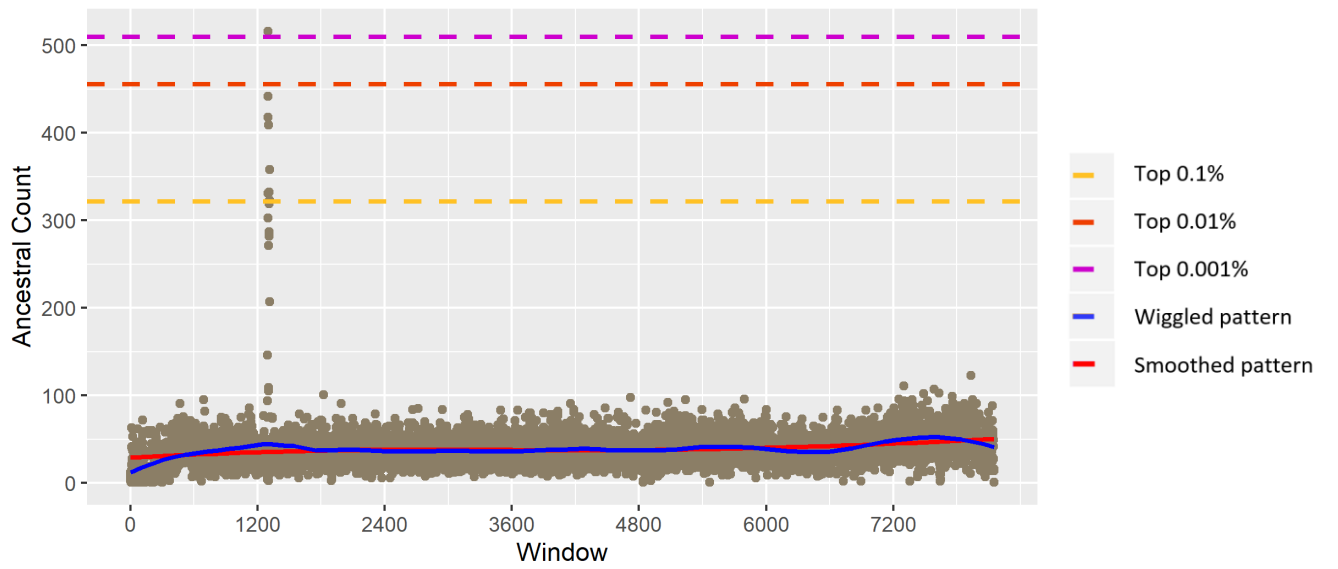
### Ancestral count in chr 13

Mean 33.27; SD 17.03



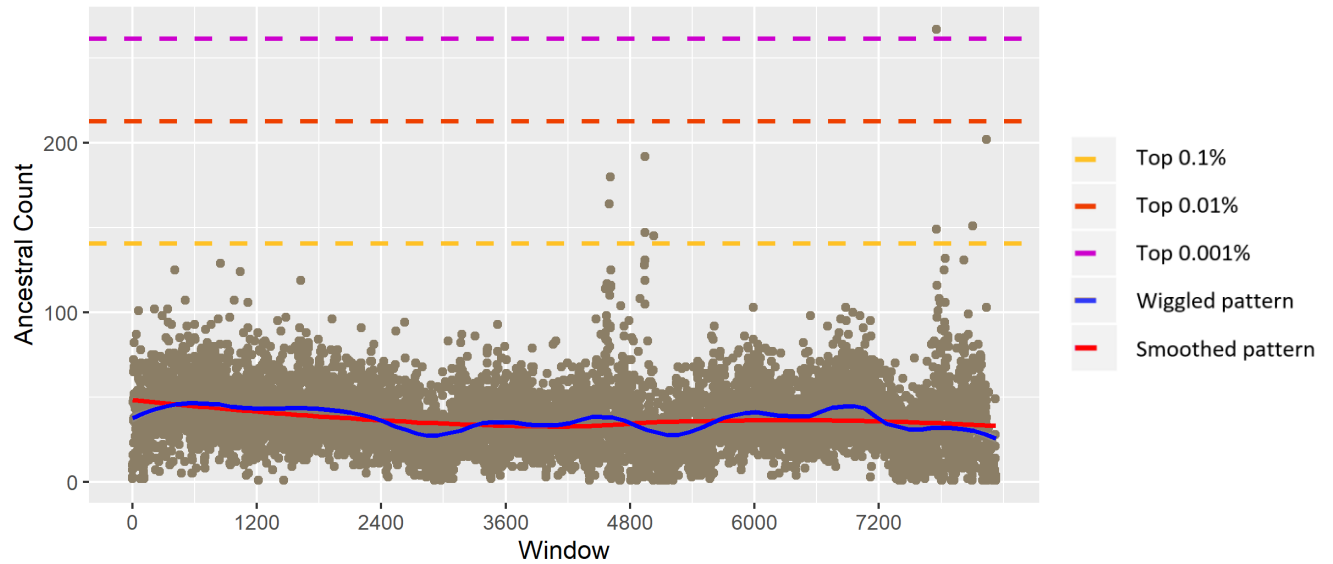
### Ancestral count in chr 14

Mean 38.98; SD 20.66



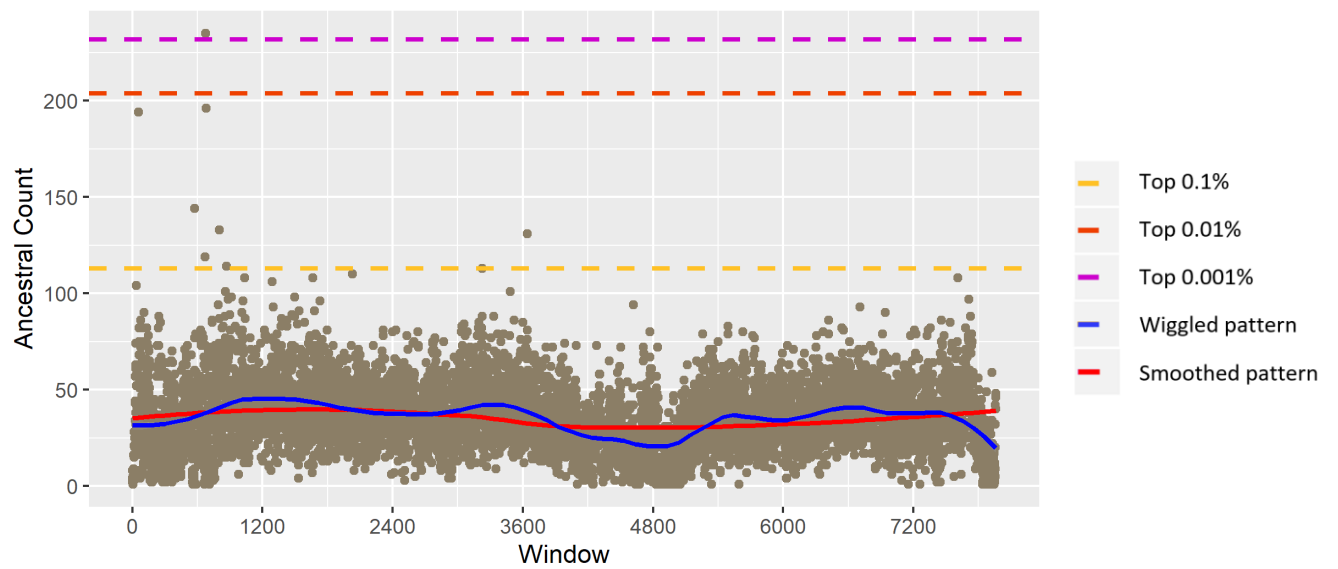
### Ancestral count in chr 15

Mean 37.2; SD 18.66



### Ancestral count in chr 16

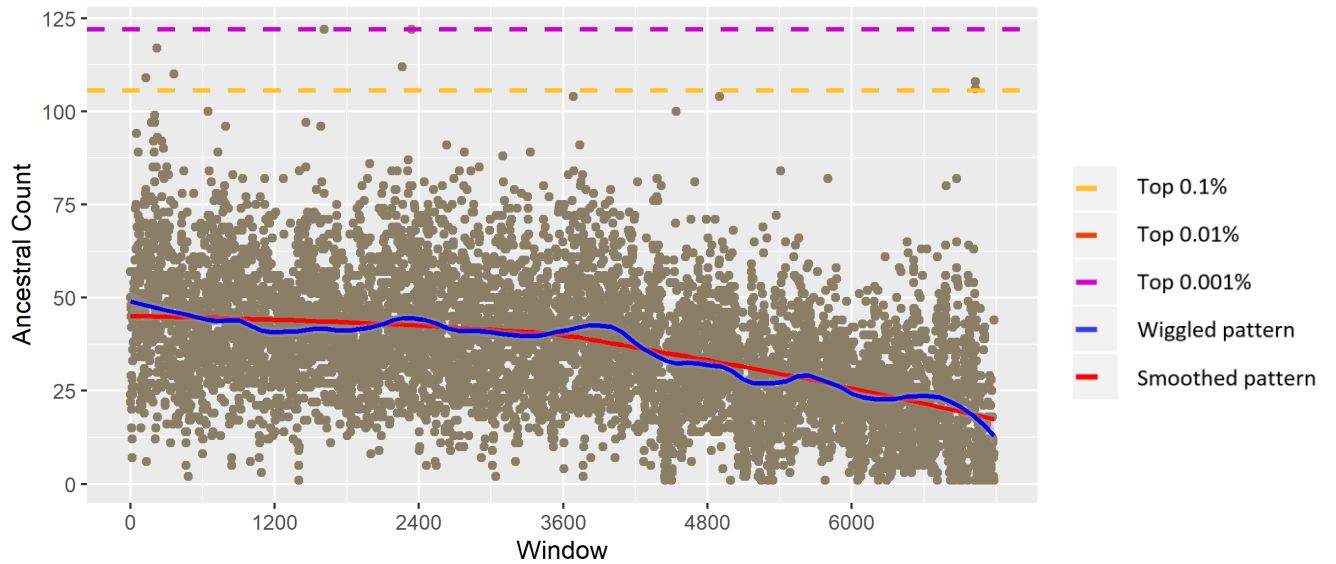
Mean 35.74; SD 17.56





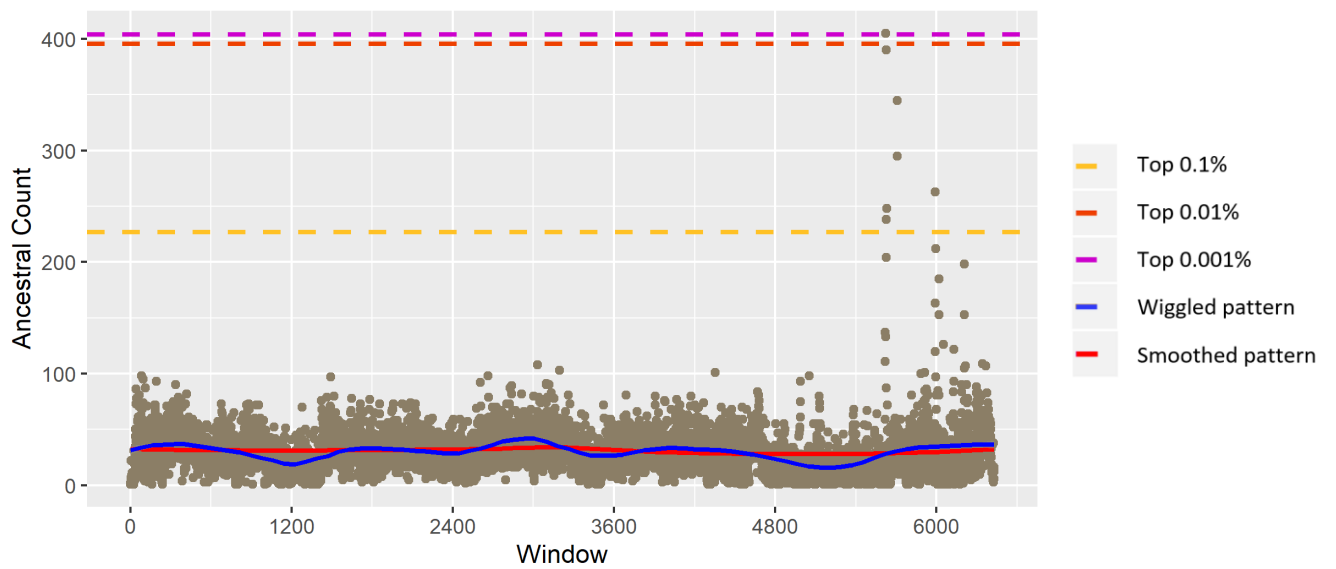
### Ancestral count in chr 17

Mean 35.97; SD 17.28



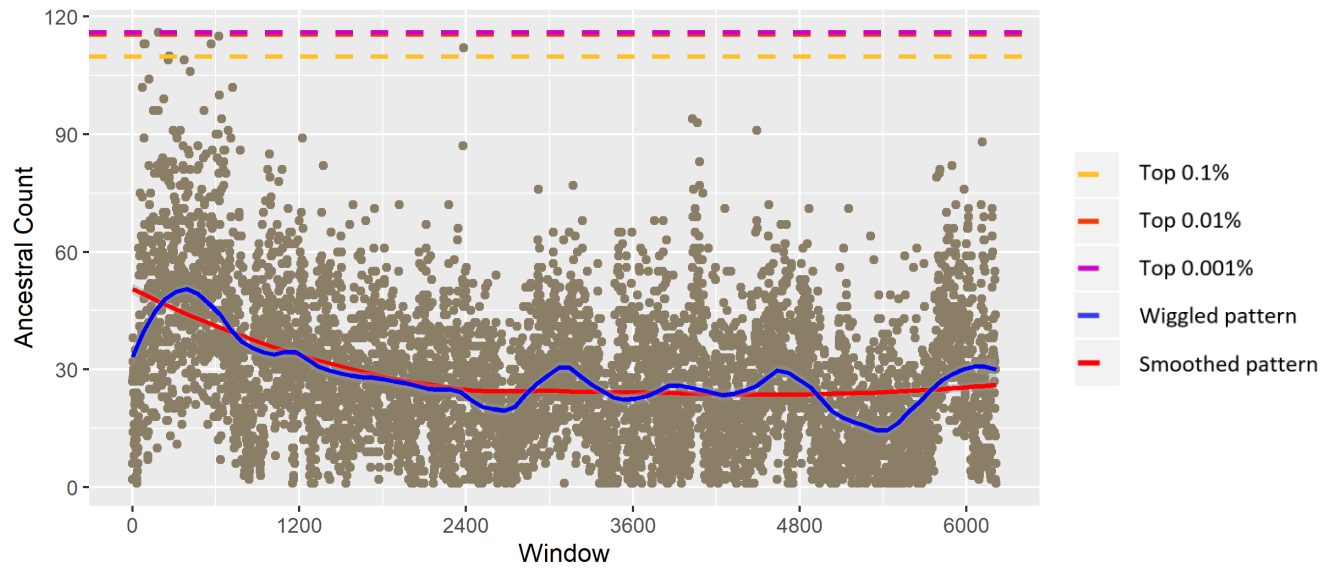
### Ancestral count in chr 18

Mean 30.07; SD 20.7



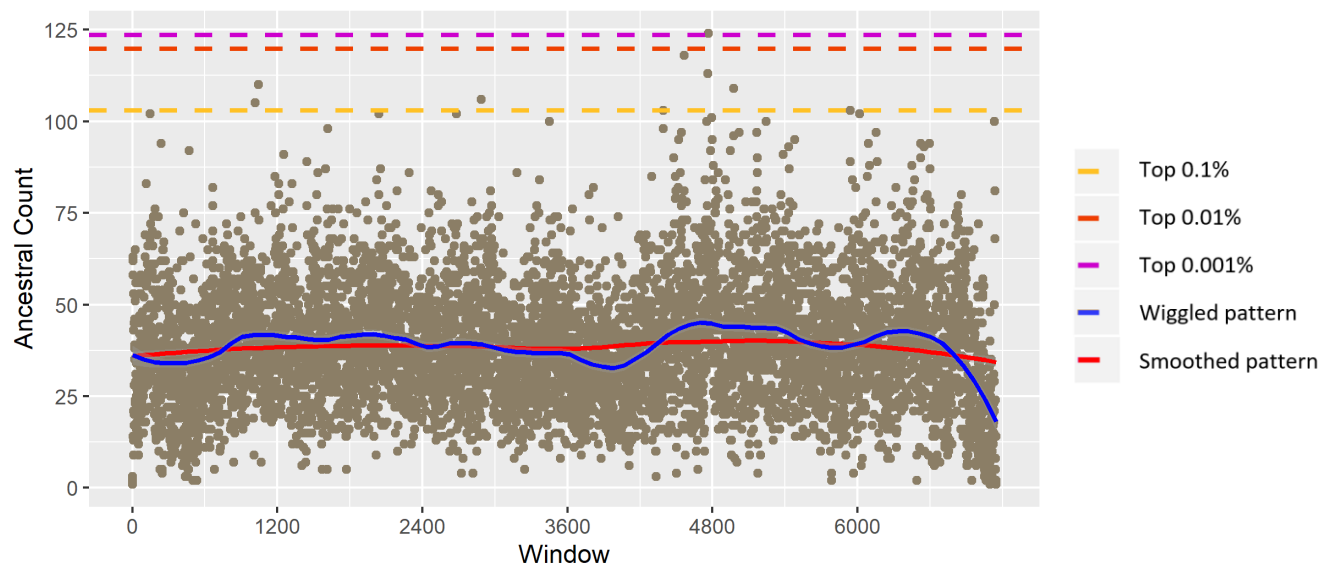
### Ancestral count in chr 19

Mean 28.29; SD 17.9



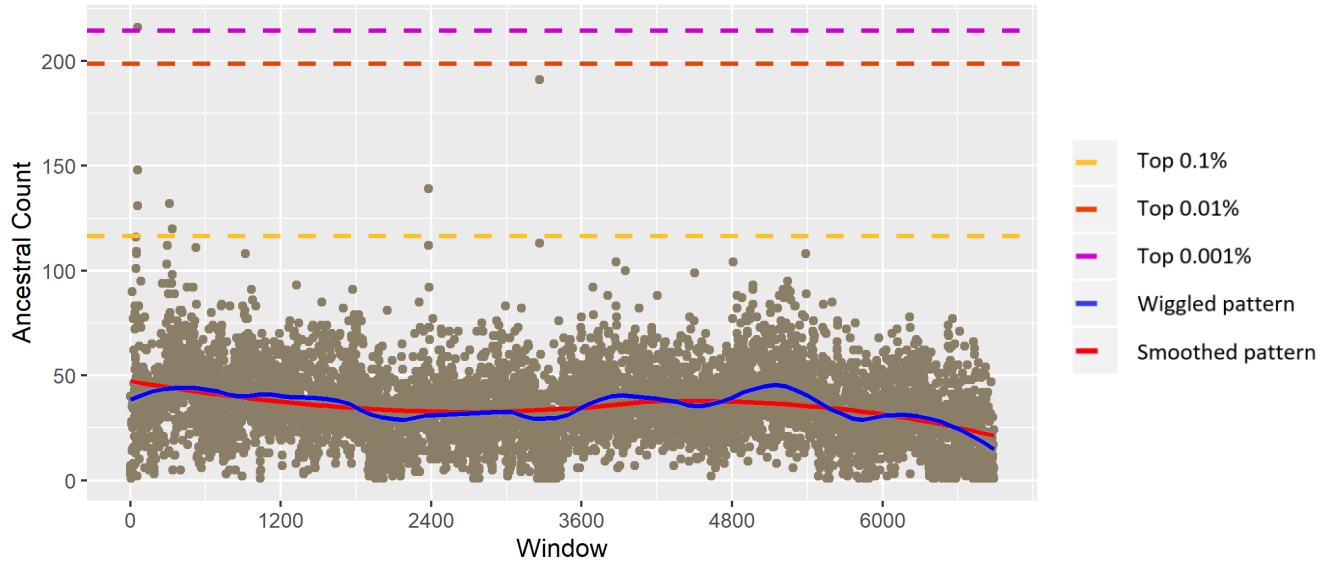
### Ancestral count in chr 20

Mean 38.88; SD 15.92



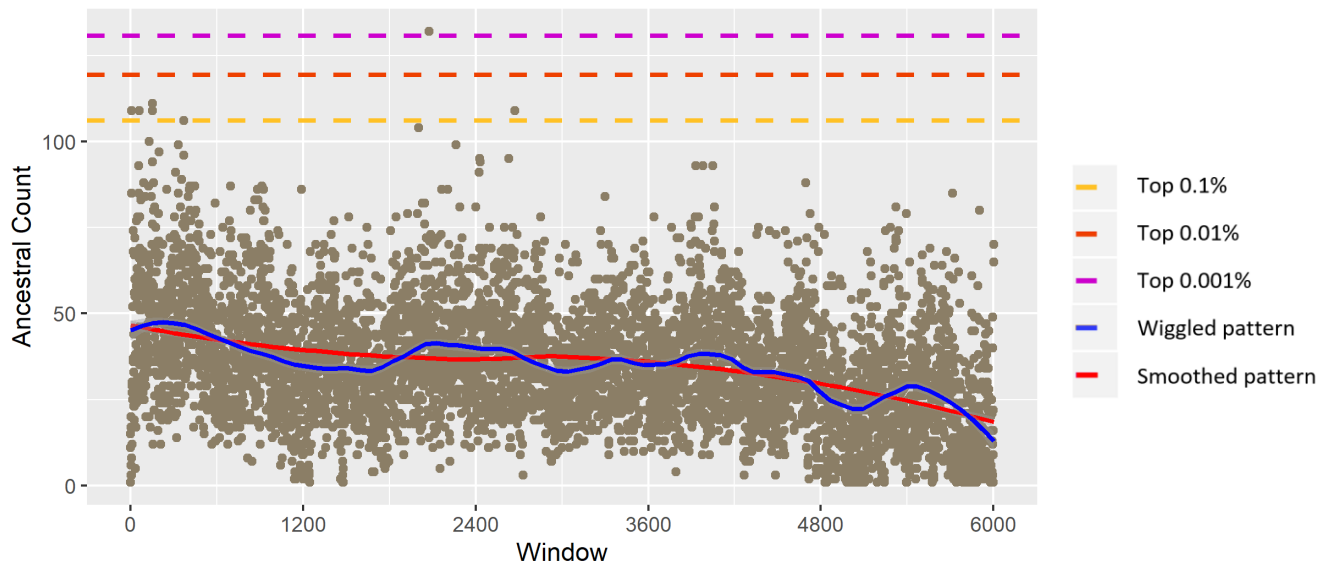
### Ancestral count in chr 21

Mean 35.49; SD 17.55



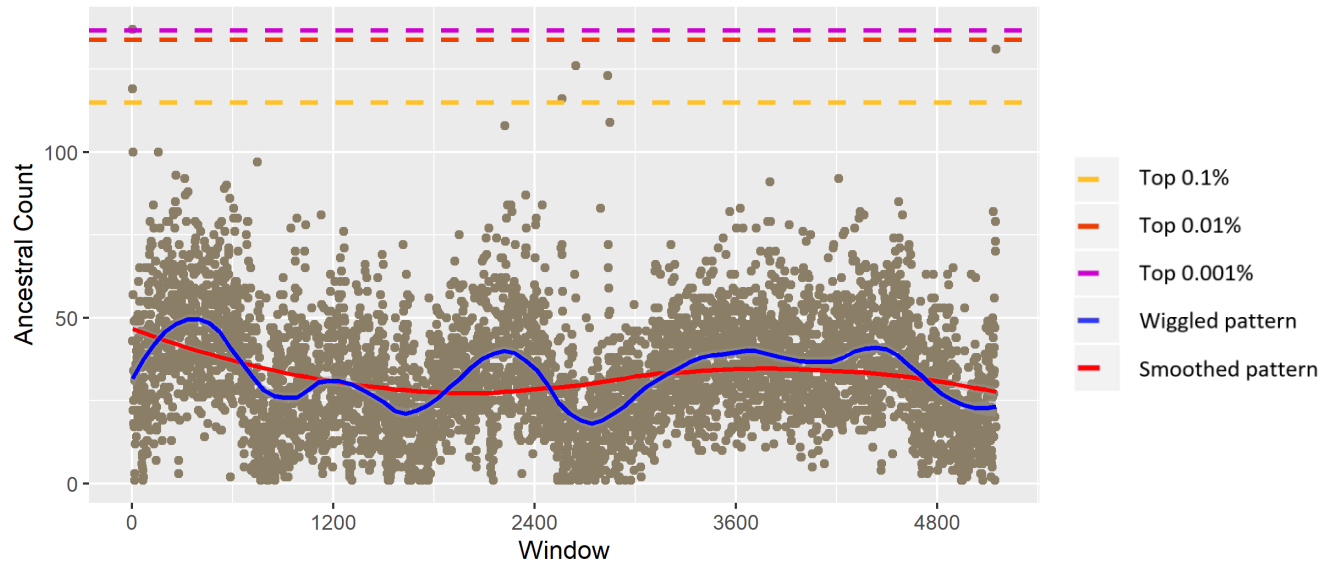
### Ancestral count in chr 22

Mean 34.84; SD 16.97



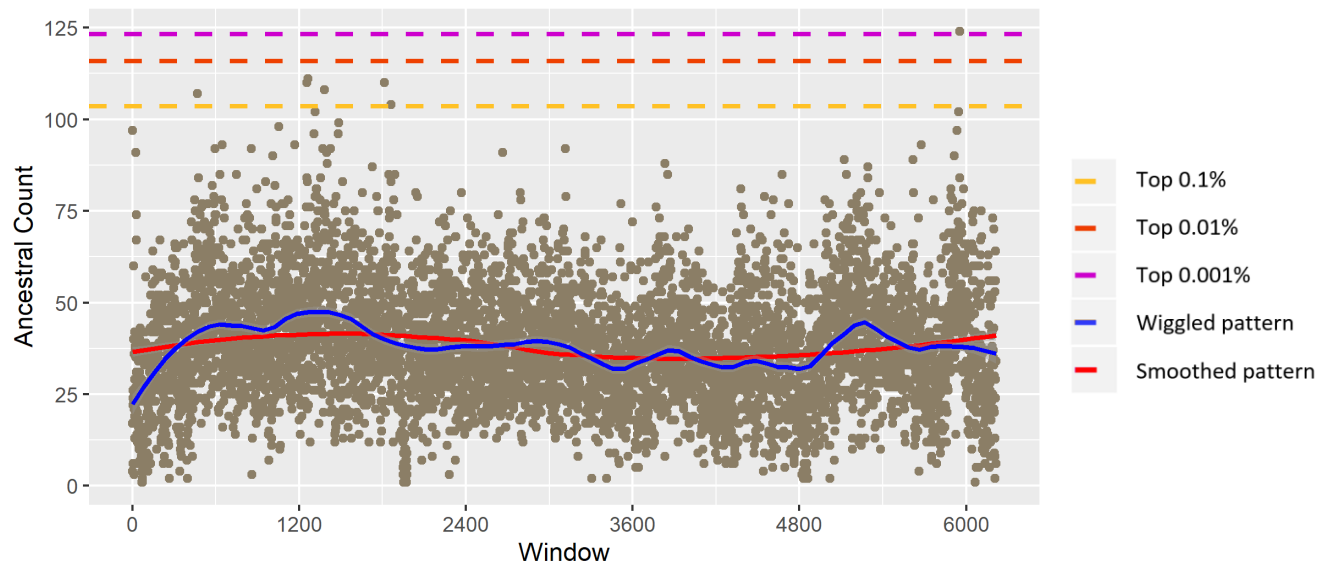
### Ancestral count in chr 23

Mean 32.84; SD 17.28



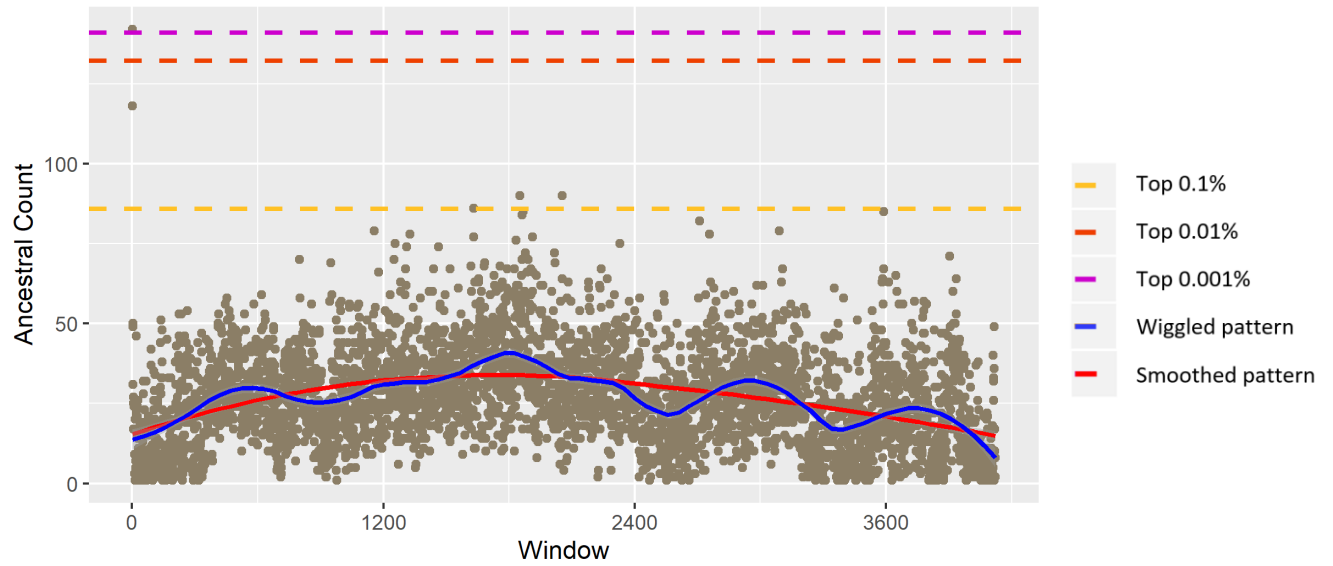
### Ancestral count in chr 24

Mean 38.32; SD 15.79



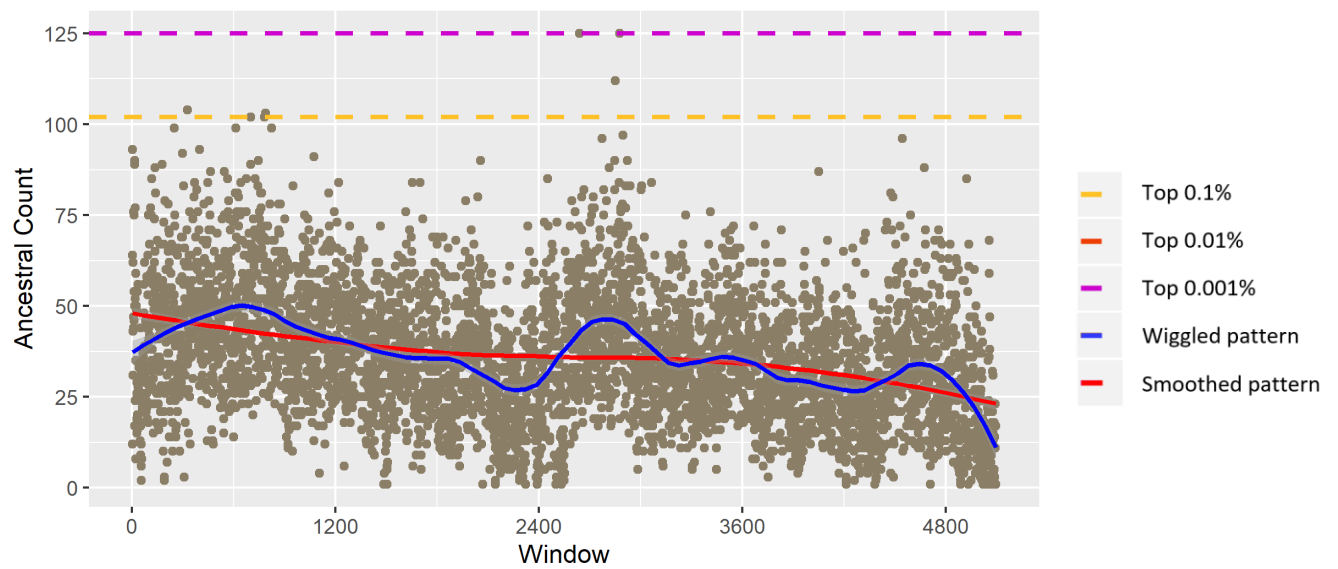
### Ancestral count in chr 25

Mean 26.88; SD 15.07



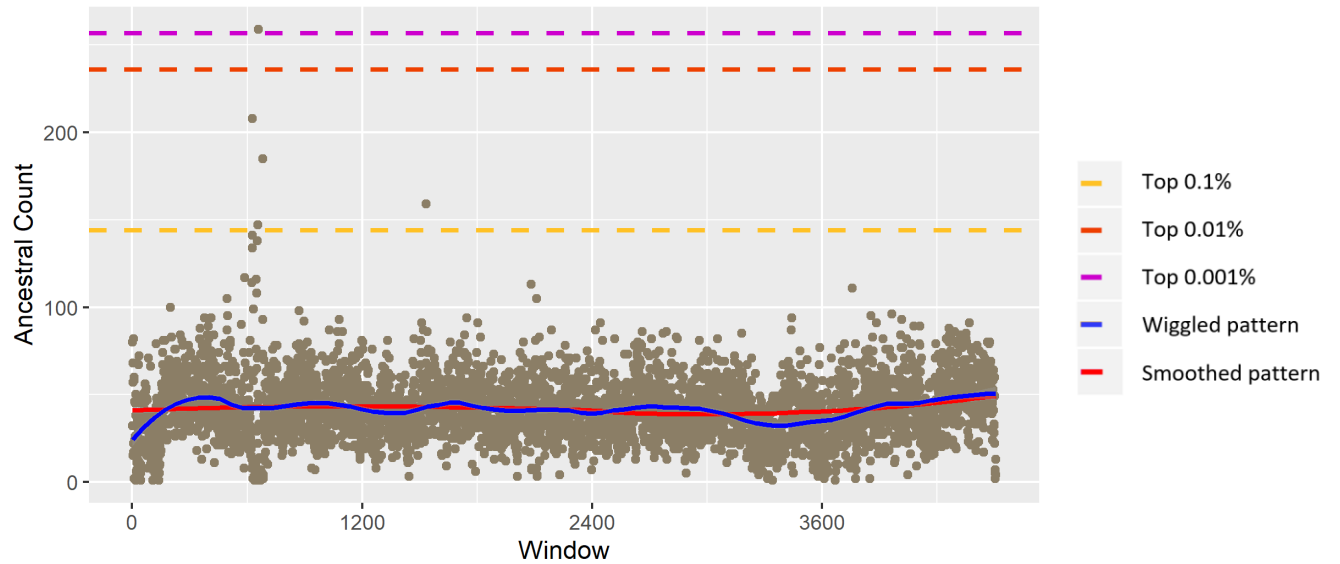
### Ancestral count in chr 26

Mean 36.26; SD 17.29



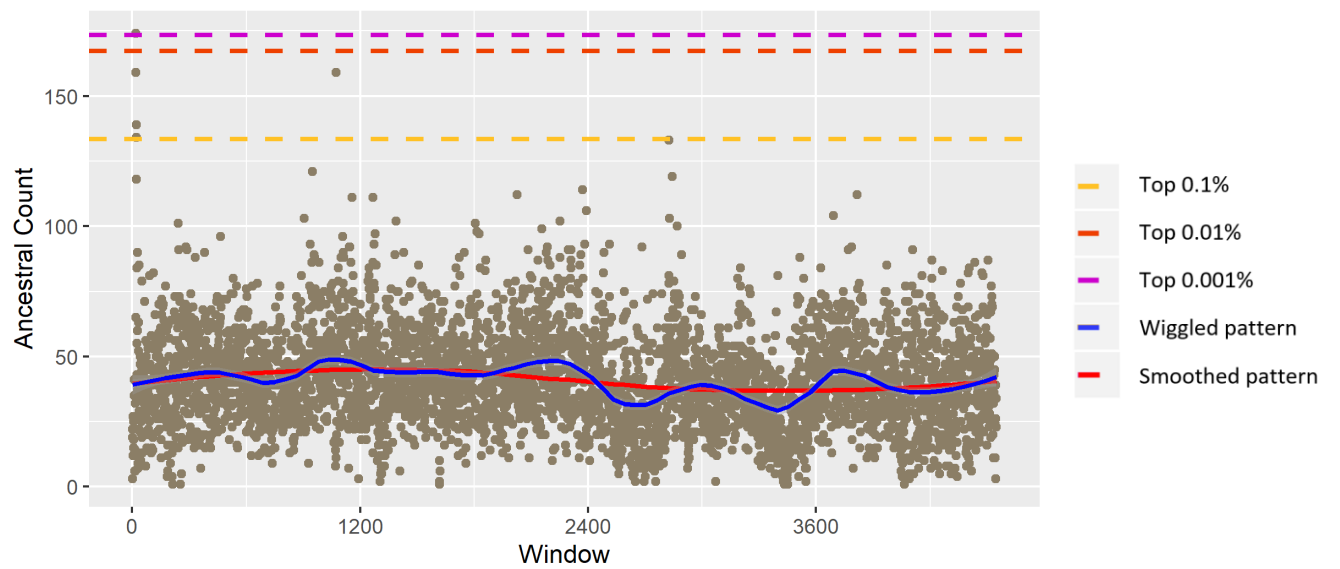
### Ancestral count in chr 27

Mean 41.77; SD 18.07



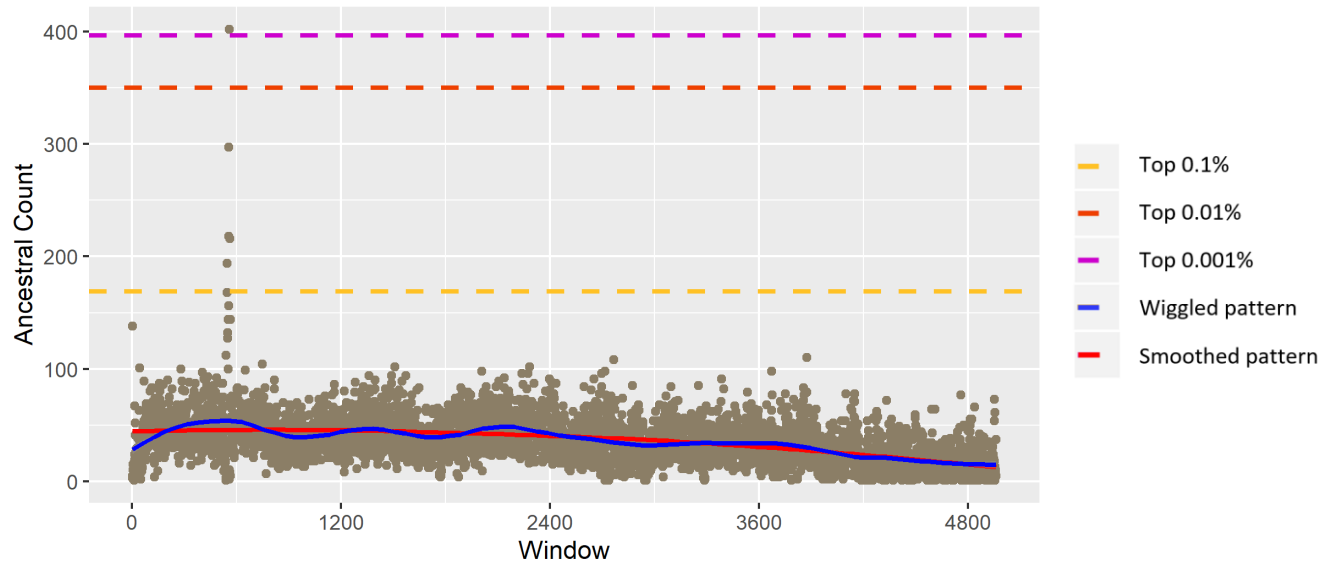
### Ancestral count in chr 28

Mean 40.73; SD 18.26



### Ancestral count in chr 29

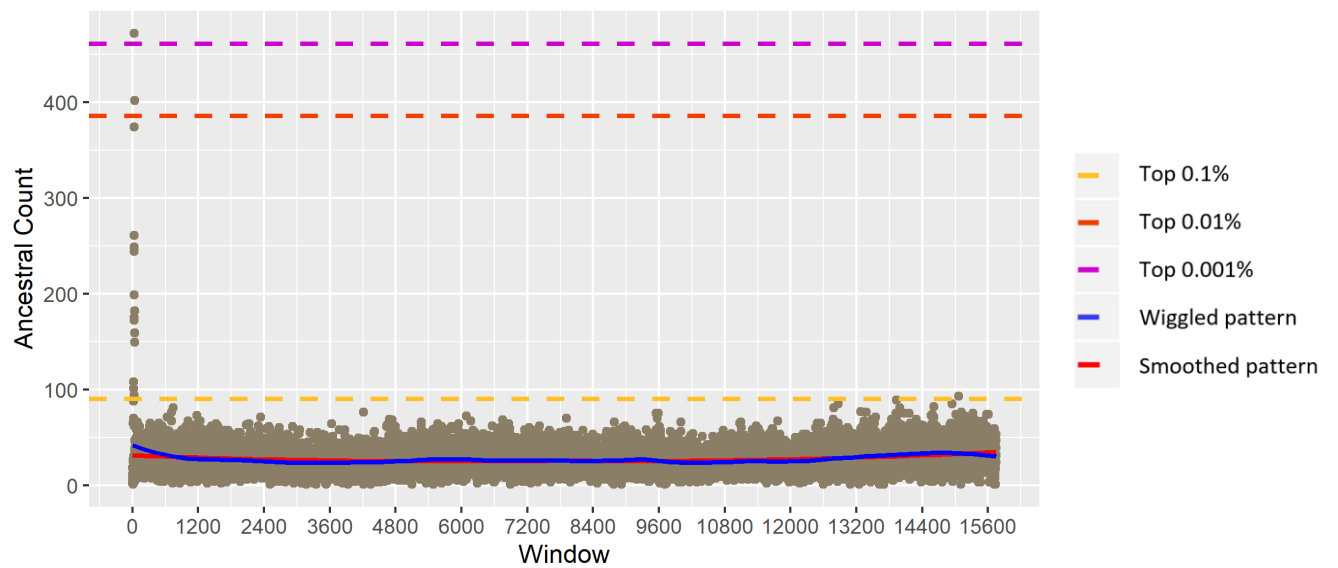
Mean 36.3; SD 20.96



### Zebu cattle

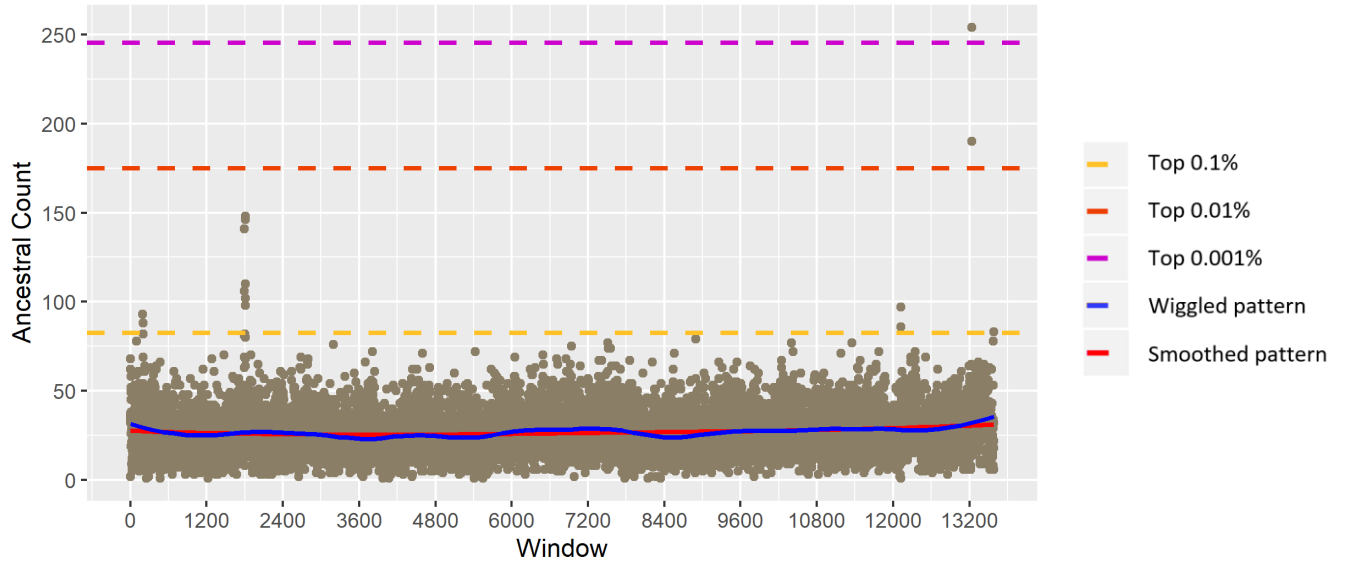
#### Ancestral count in chr 1

Mean 26.95; SD 13.73



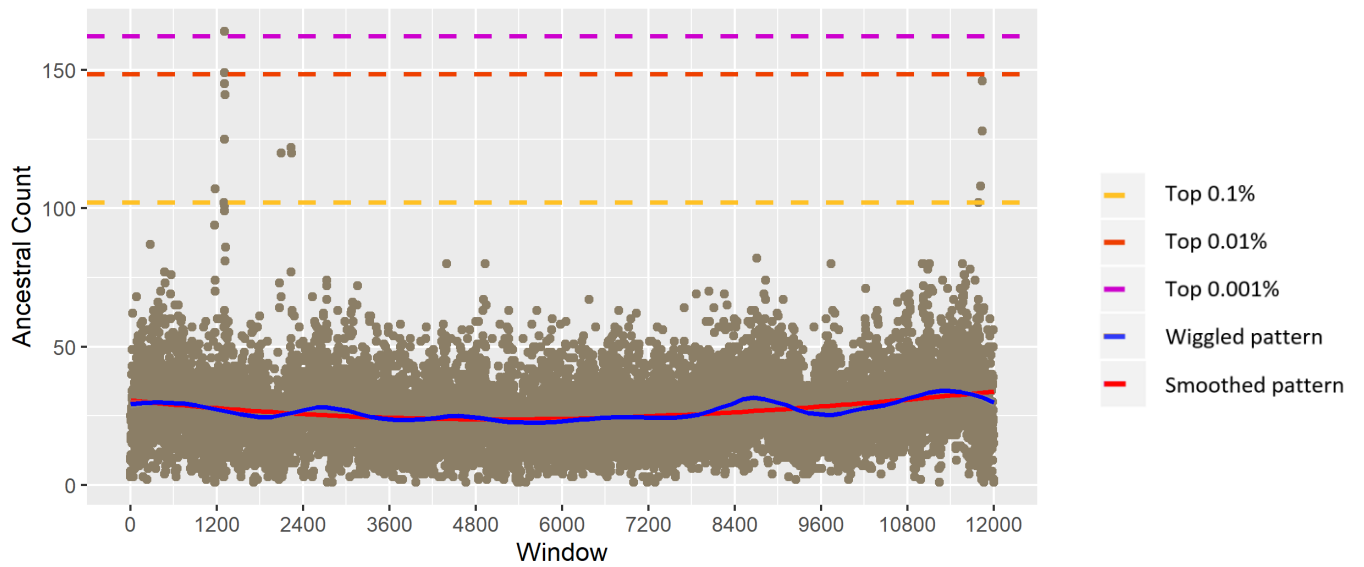
### Ancestral count in chr 2

Mean 26.82; SD 12.09



### Ancestral count in chr 3

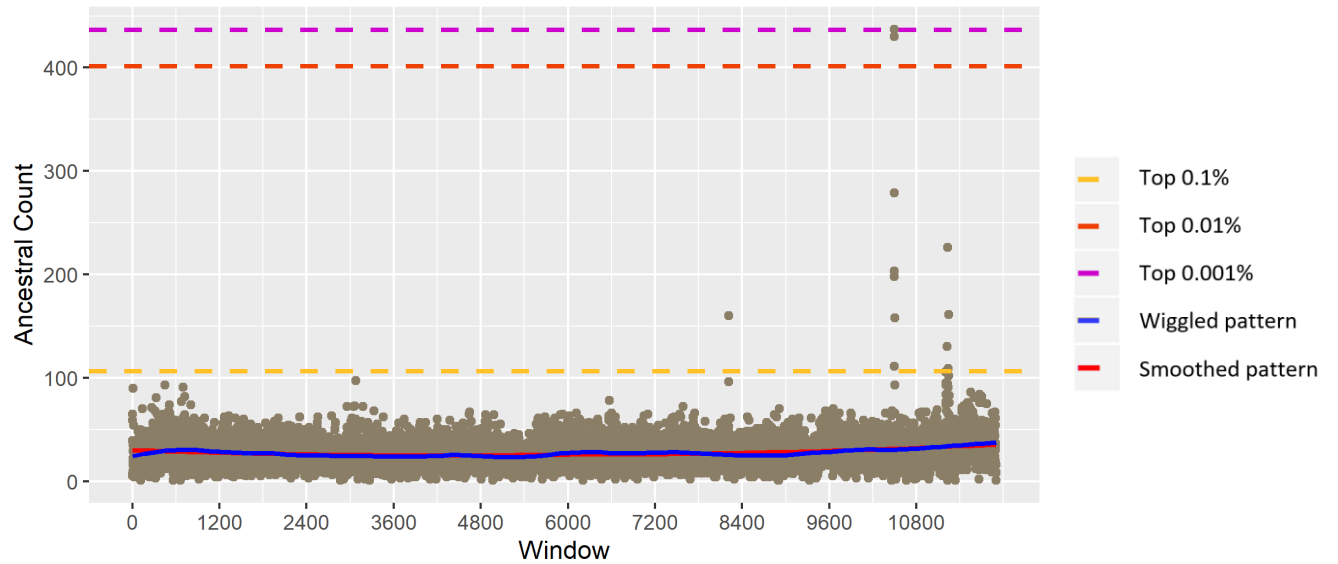
Mean 26.83; SD 12.75





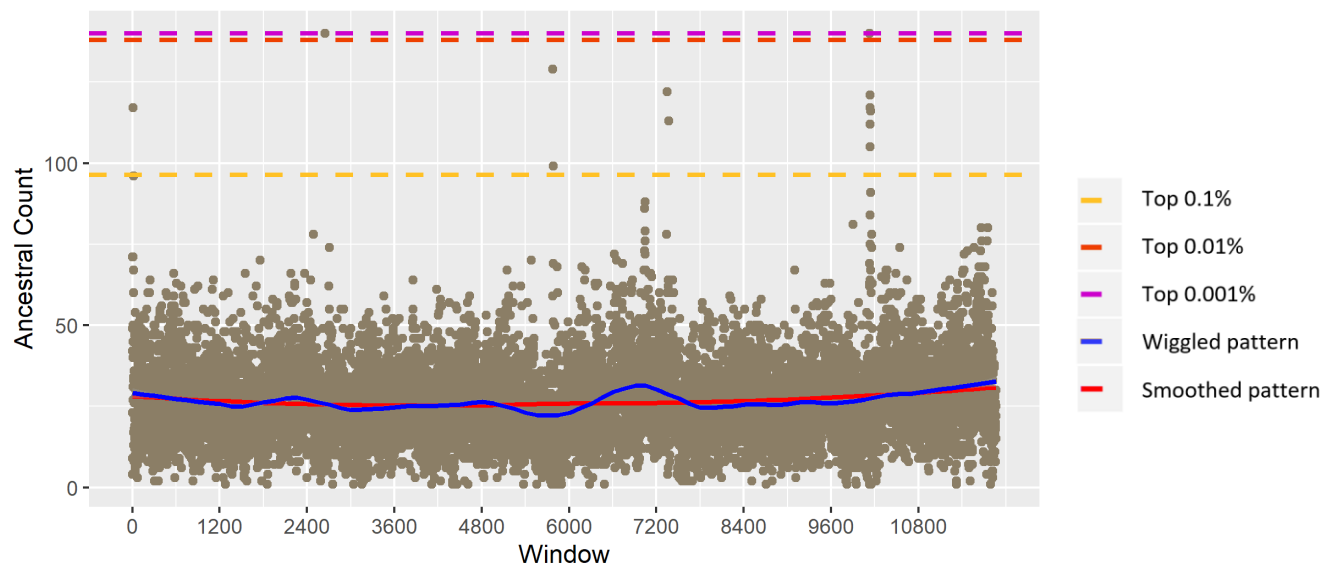
### Ancestral count in chr 4

Mean 27.41; SD 14.23



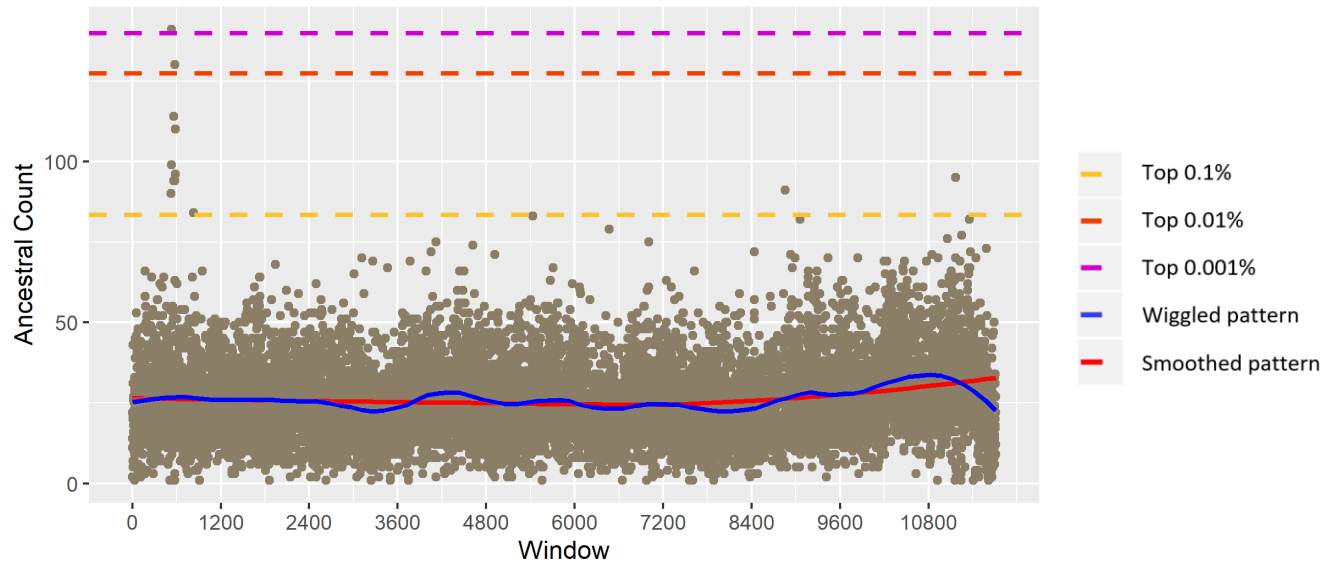
### Ancestral count in chr 5

Mean 26.62; SD 12.2



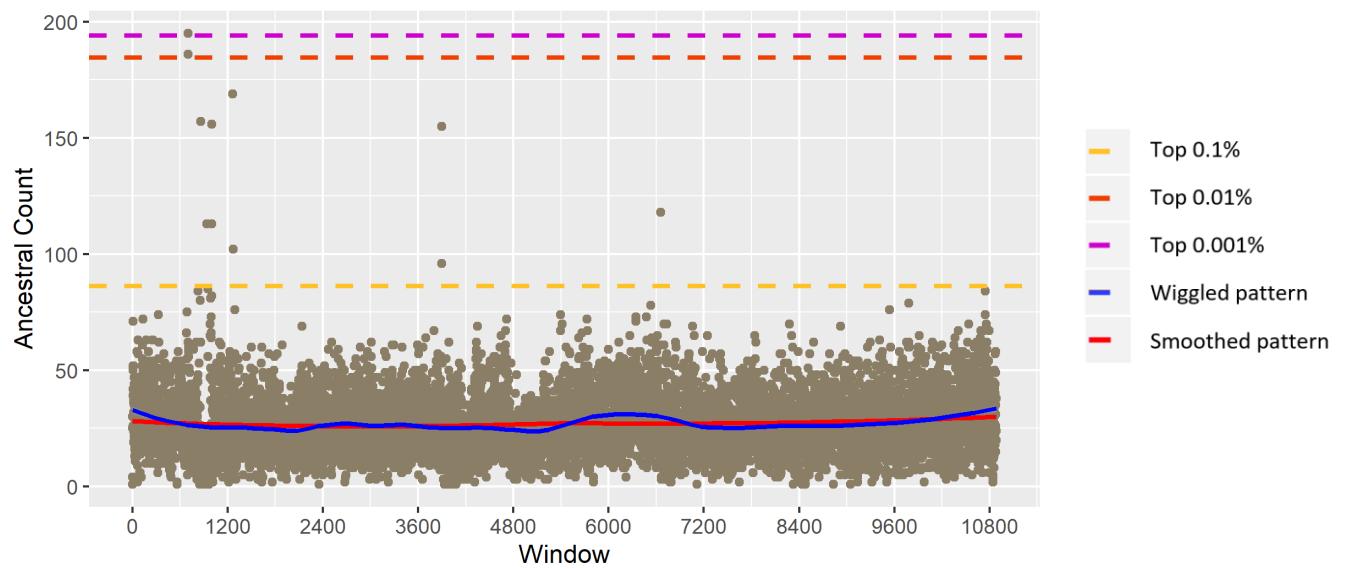
### Ancestral count in chr 6

Mean 26.21; SD 11.93



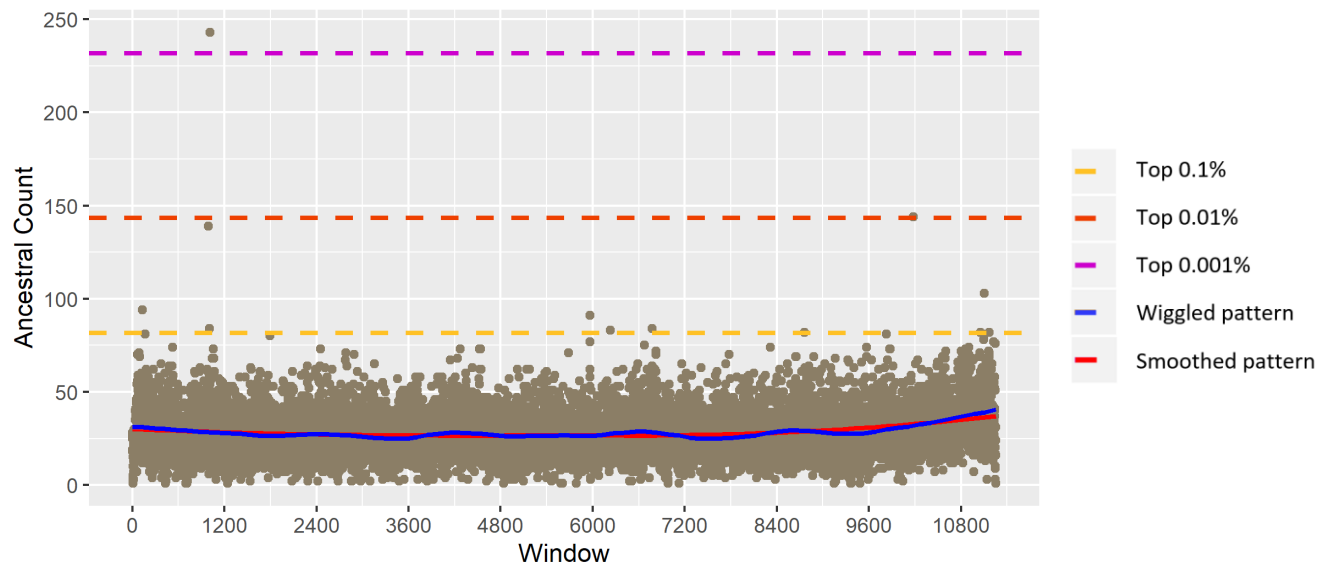
### Ancestral count in chr 7

Mean 26.97; SD 12.7



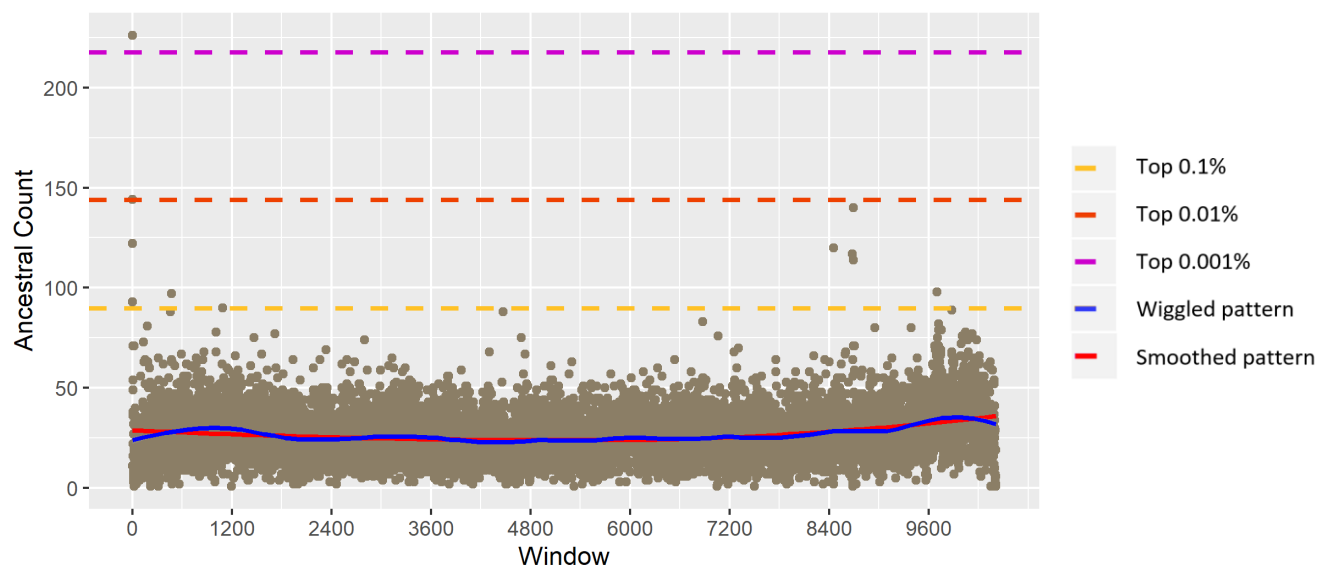
### Ancestral count in chr 8

Mean 28.27; SD 12.64



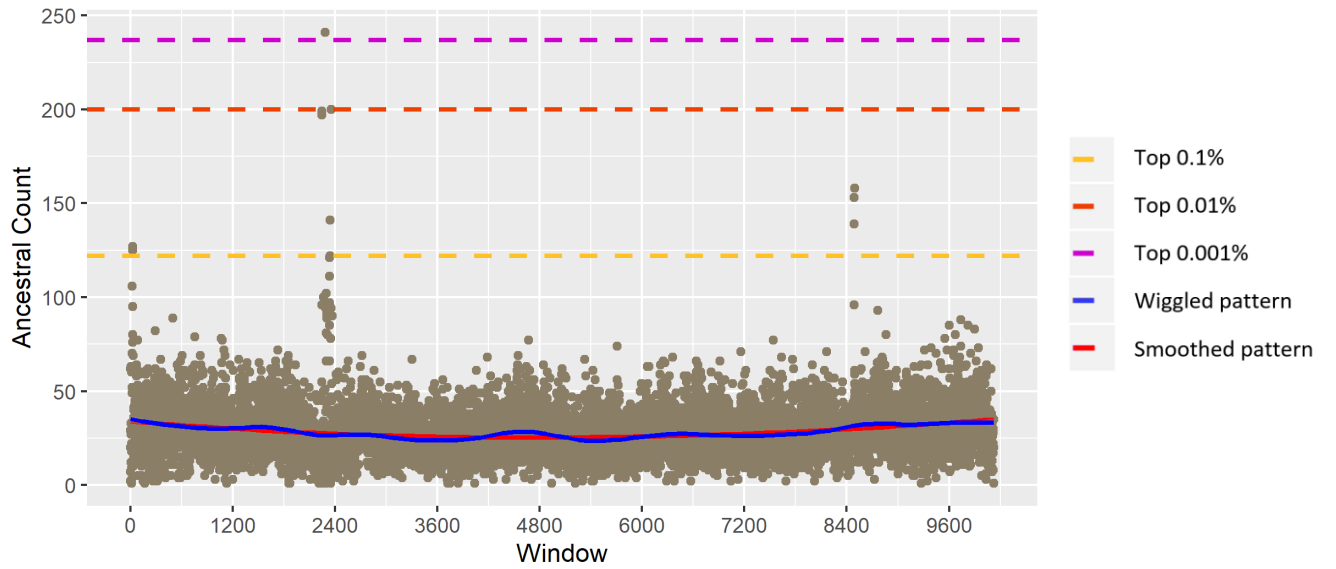
### Ancestral count in chr 9

Mean 26.67; SD 12.3



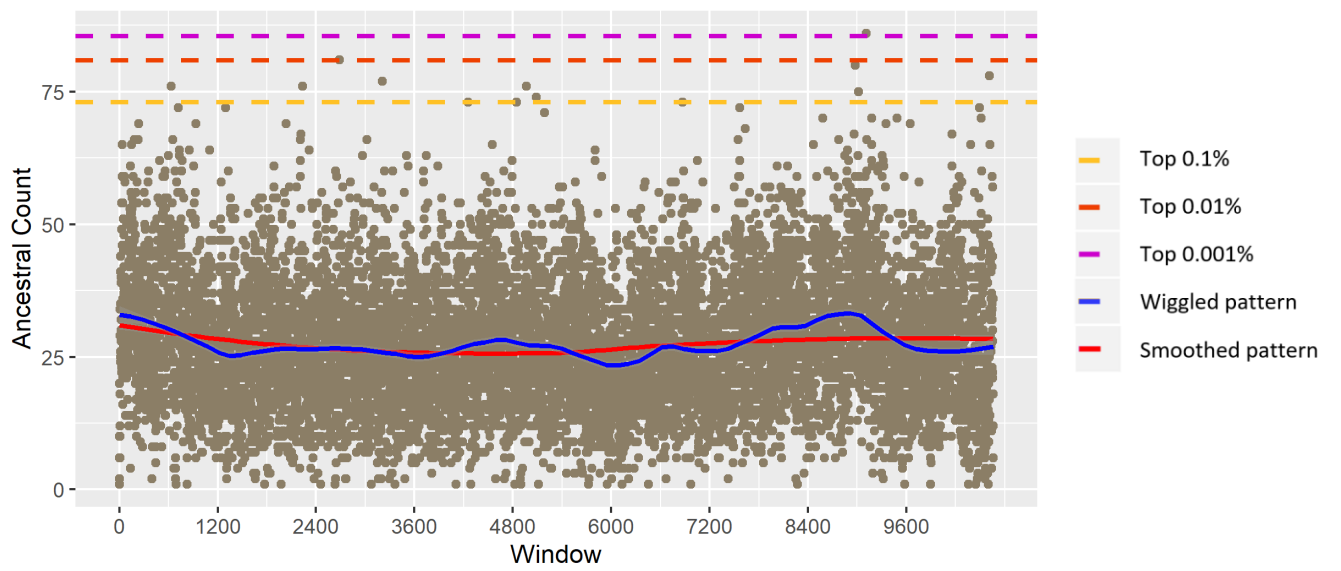
### Ancestral count in chr 10

Mean 28.32; SD 13.65



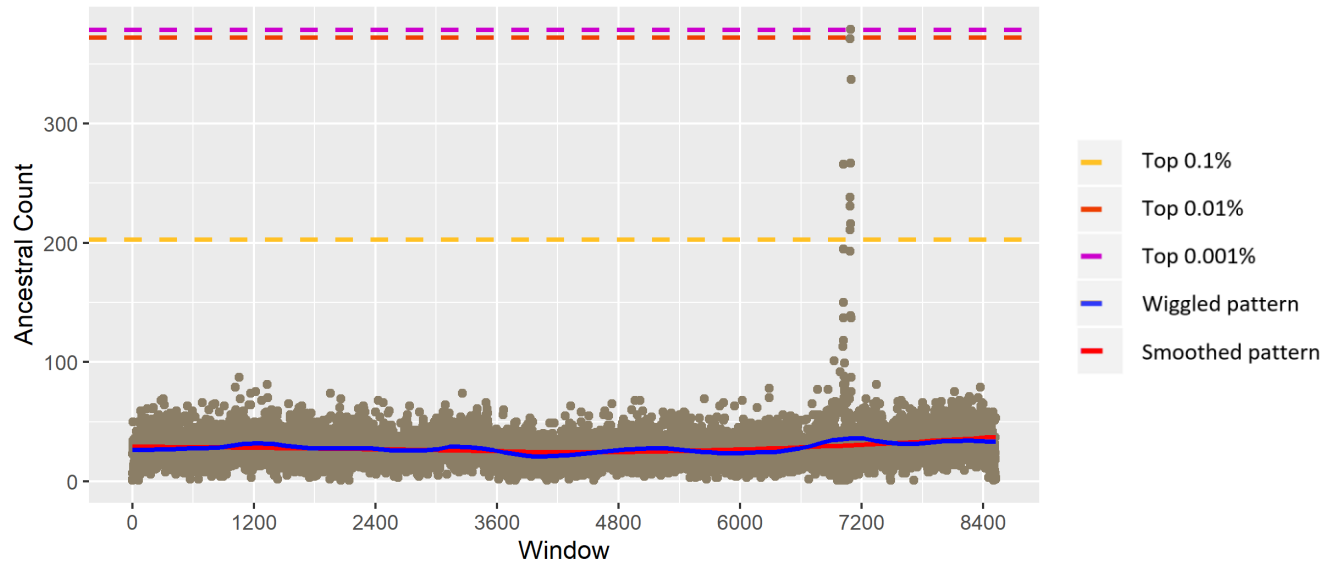
### Ancestral count in chr 11

Mean 27.49; SD 11.81



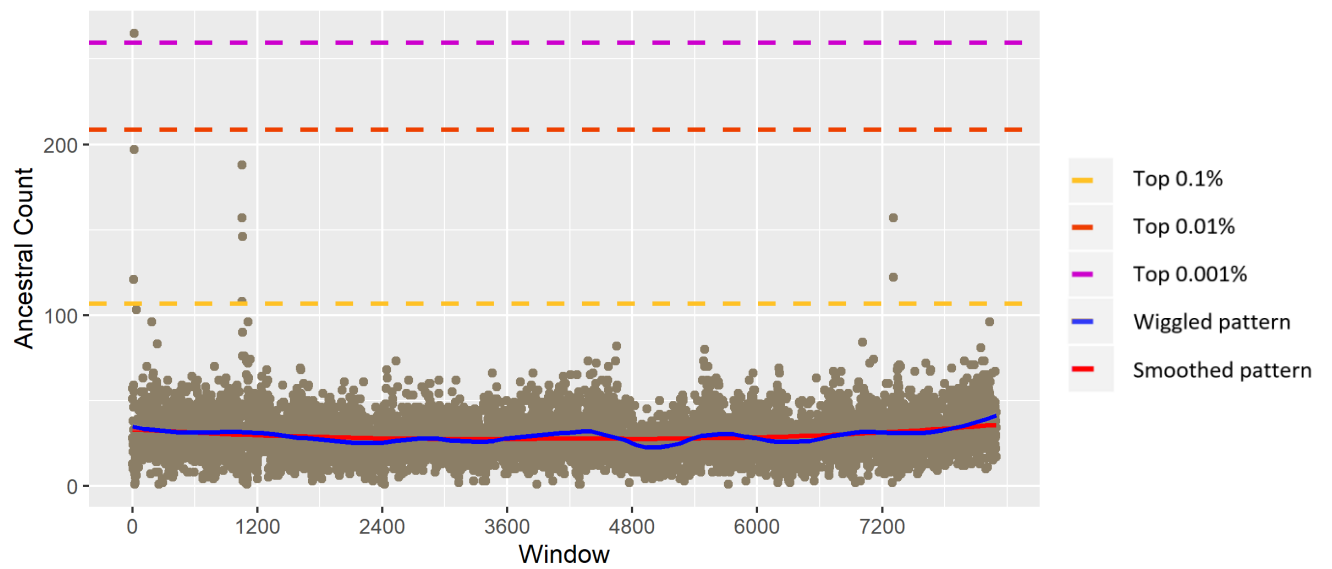
### Ancestral count in chr 12

Mean 28.13; SD 15.5



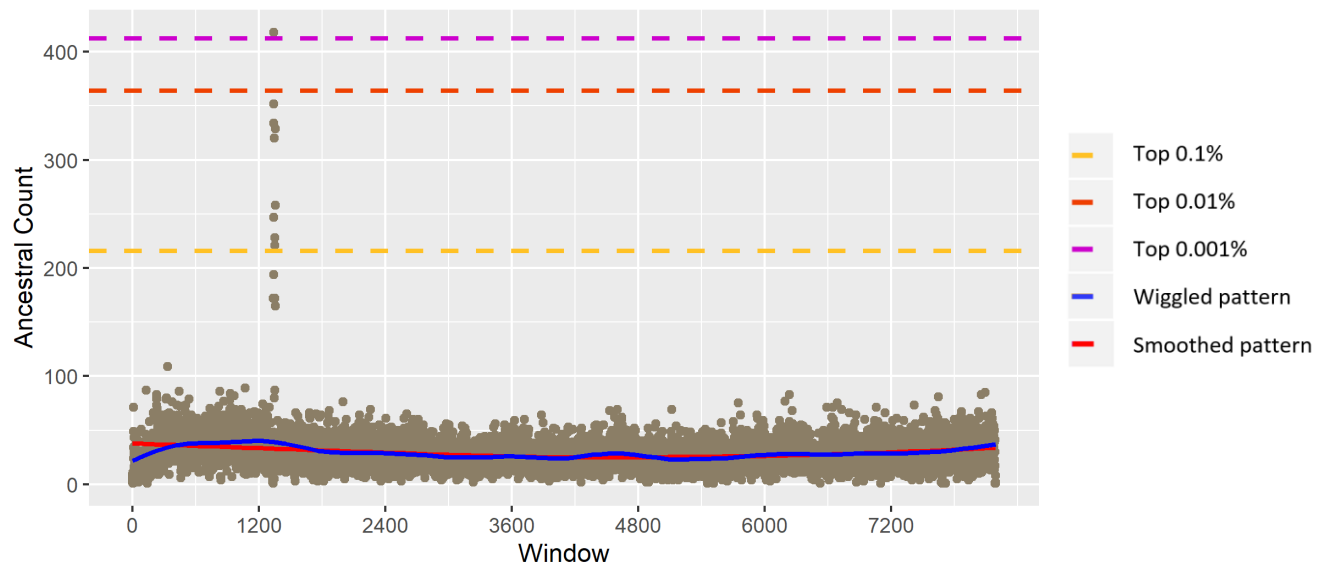
### Ancestral count in chr 13

Mean 29.19; SD 13.08



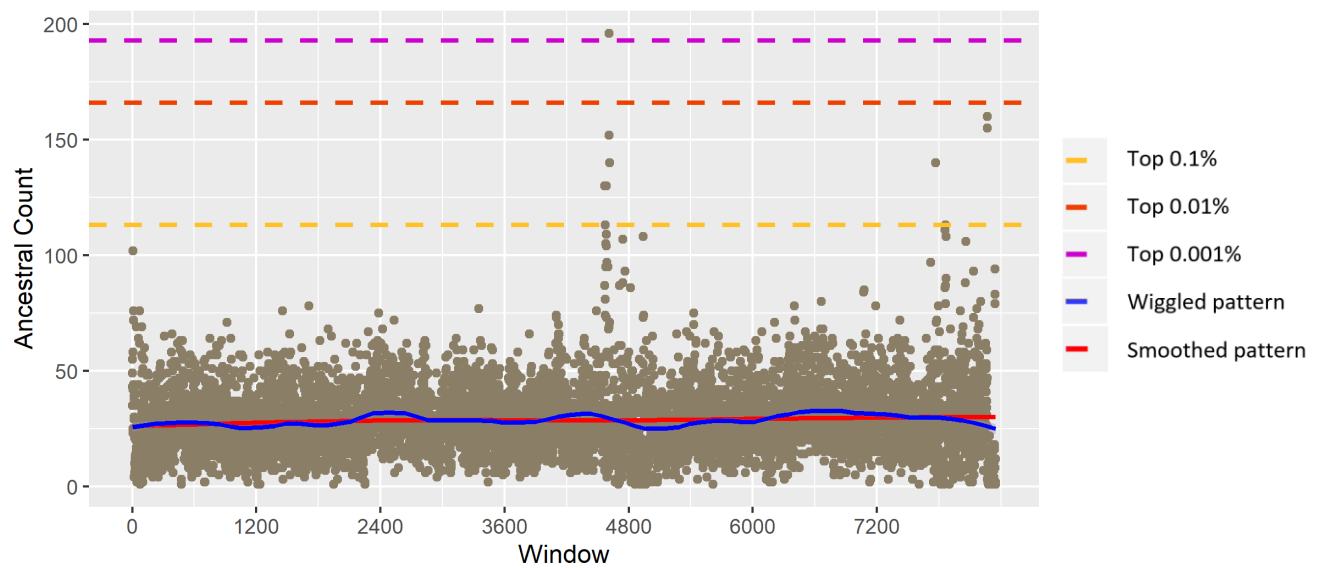
### Ancestral count in chr 14

Mean 29.25; SD 16.04



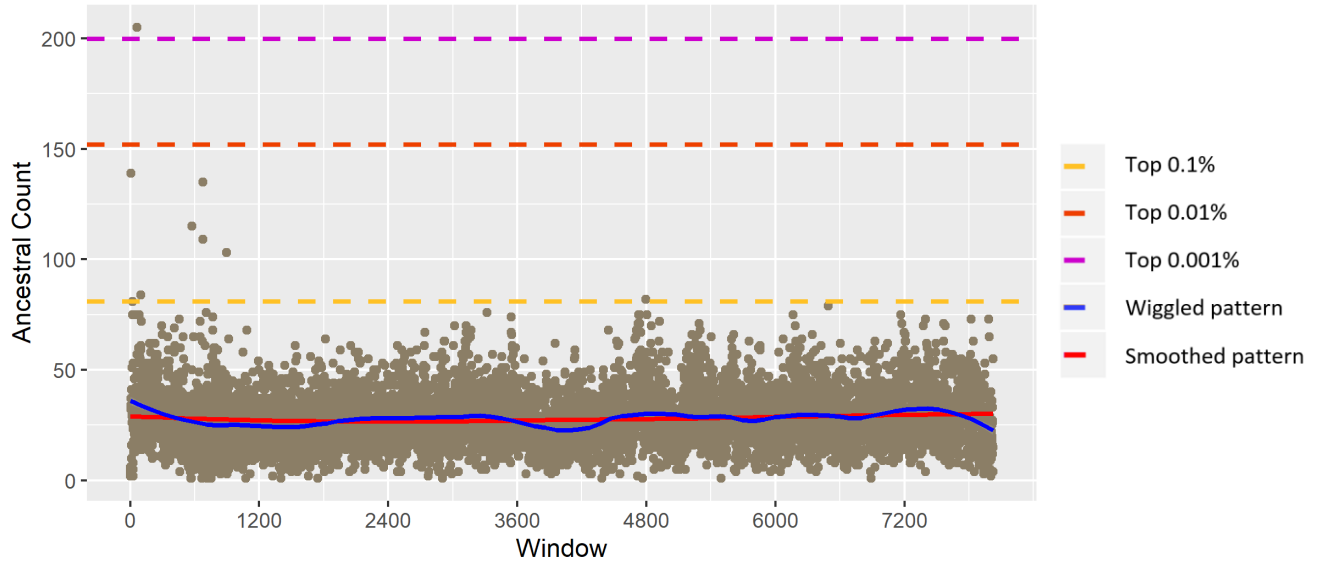
### Ancestral count in chr 15

Mean 28.72; SD 14.12



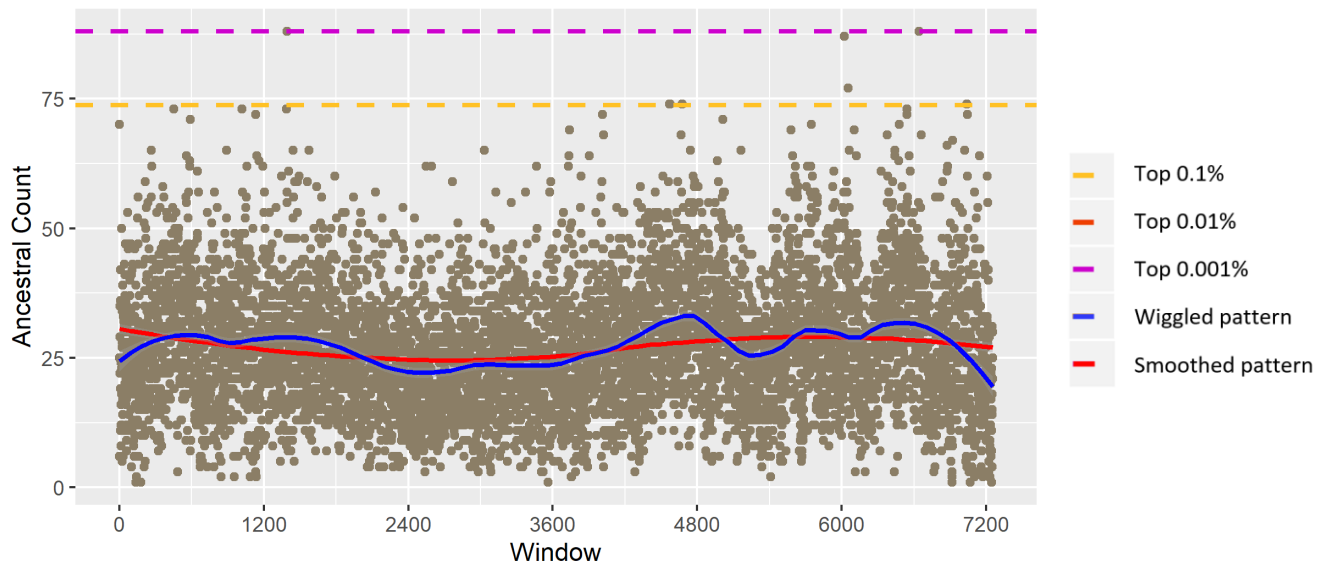
### Ancestral count in chr 16

Mean 27.94; SD 12.7



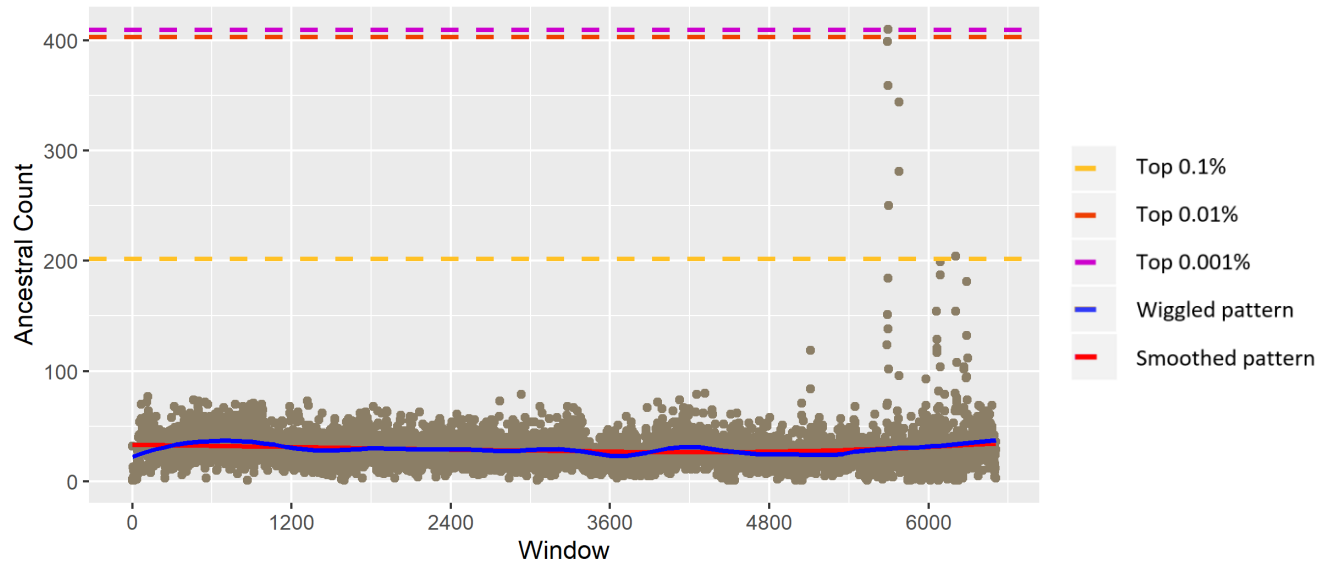
### Ancestral count in chr 17

Mean 27.27; SD 11.98



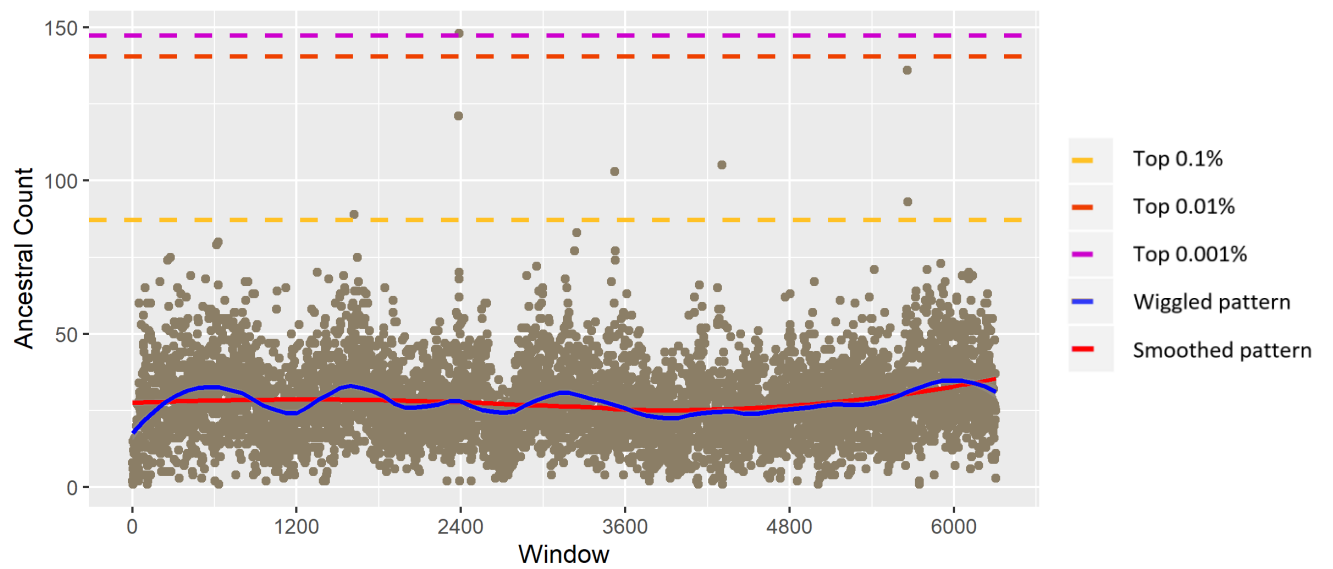
### Ancestral count in chr 18

Mean 29.2; SD 17.42



### Ancestral count in chr 19

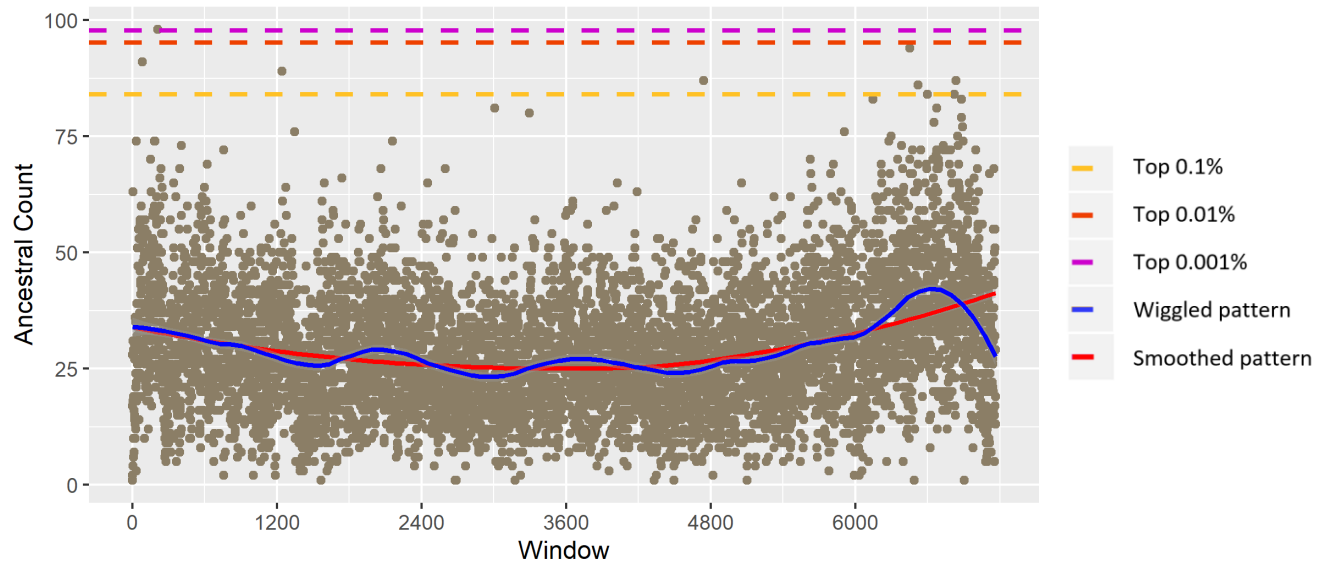
Mean 27.83; SD 12.67





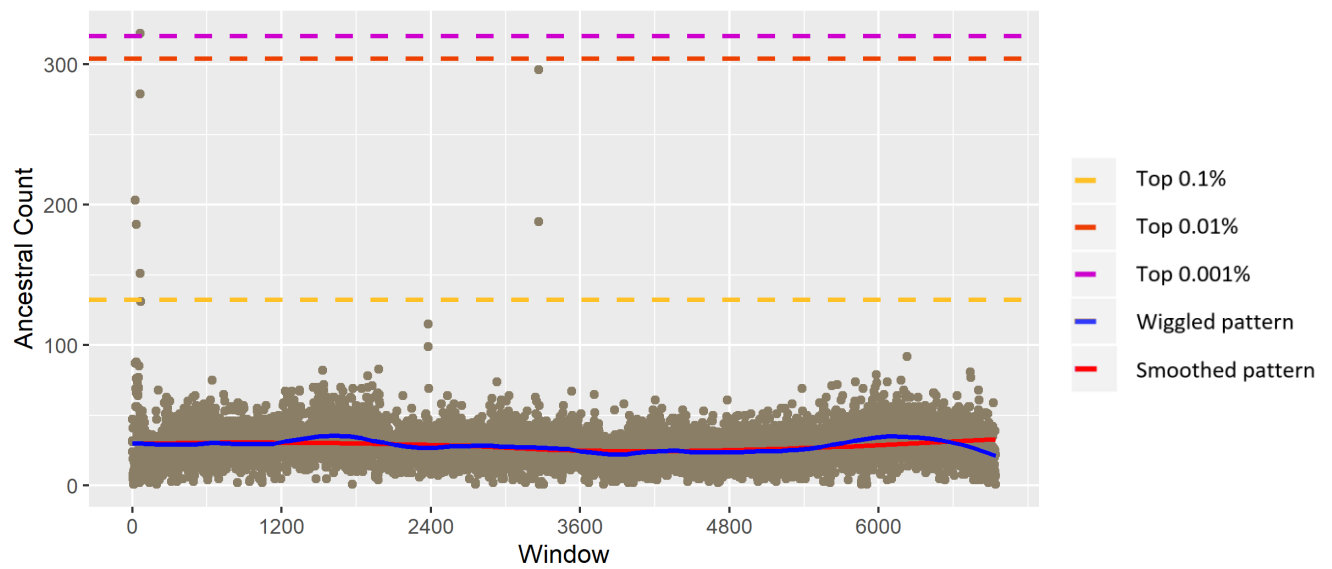
### Ancestral count in chr 20

Mean 29.16; SD 12.99



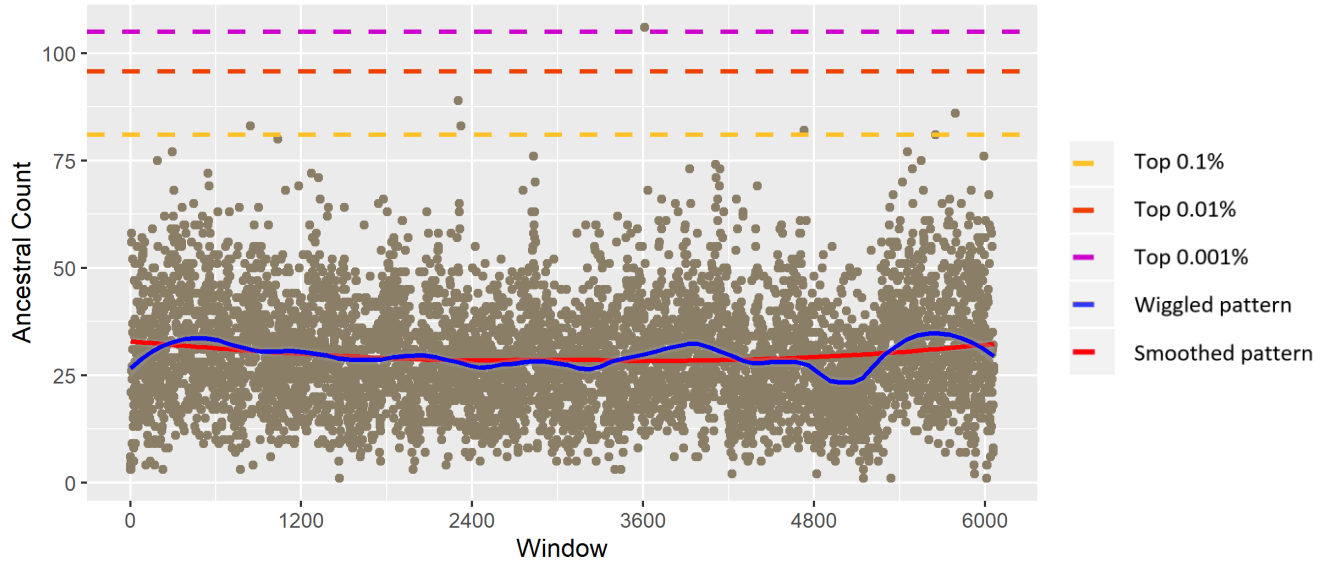
### Ancestral count in chr 21

Mean 28.39; SD 14.45



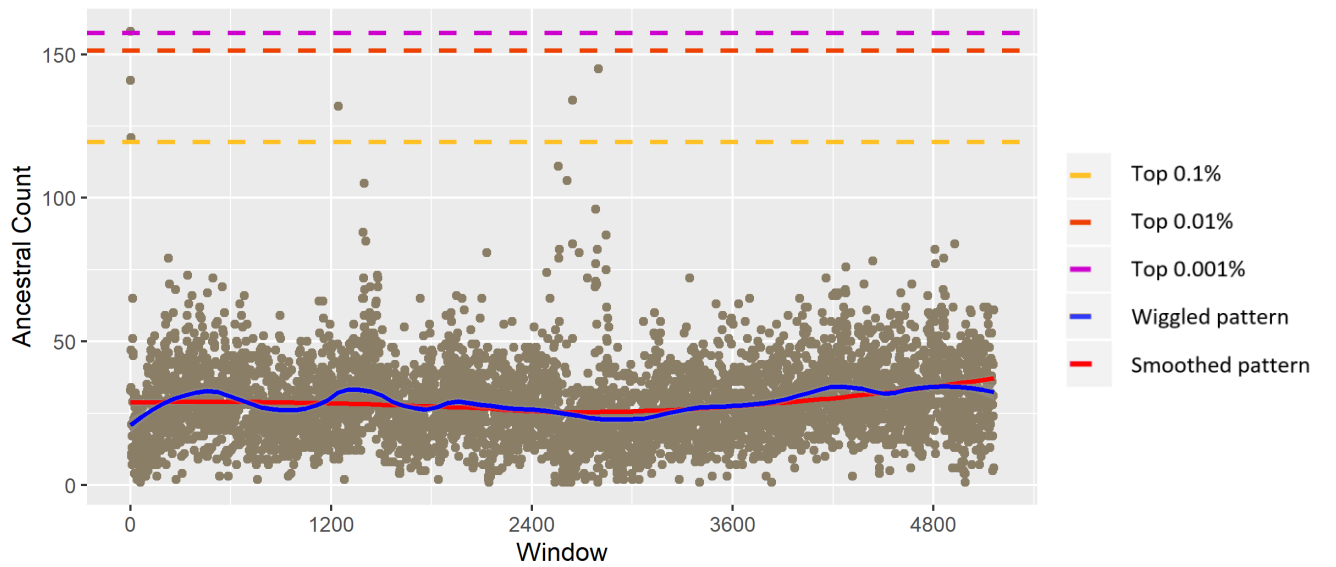
### Ancestral count in chr 22

Mean 29.57; SD 12.25



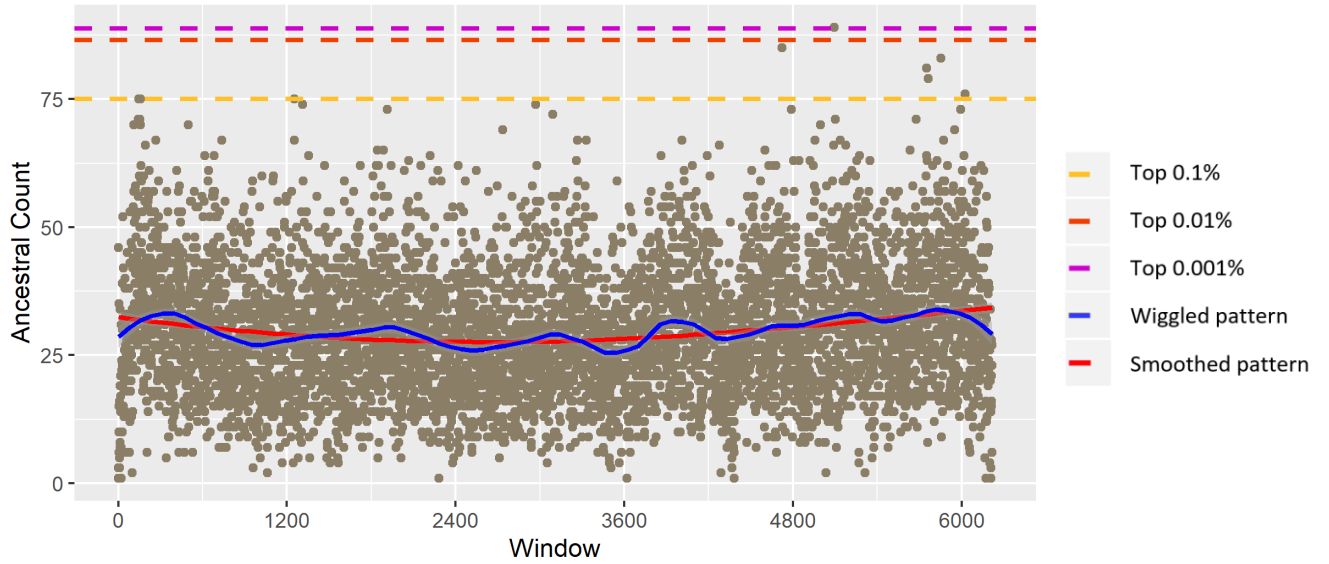
### Ancestral count in chr 23

Mean 28.91; SD 13.65



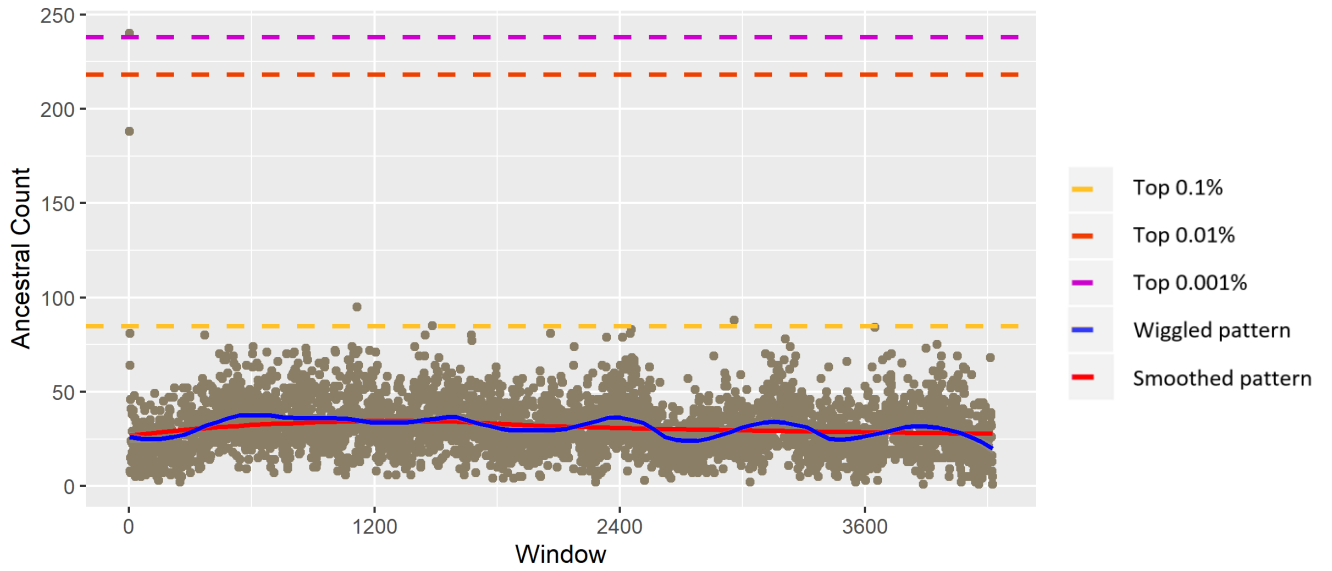
### Ancestral count in chr 24

Mean 29.79; SD 12.28



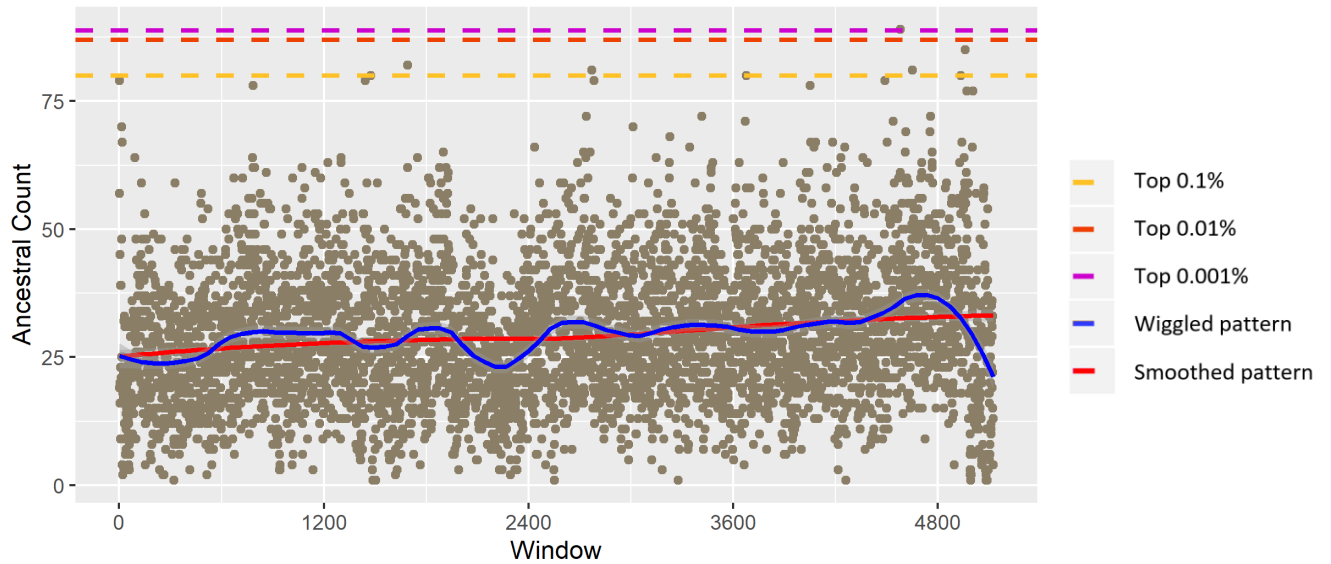
### Ancestral count in chr 25

Mean 31.15; SD 14.16



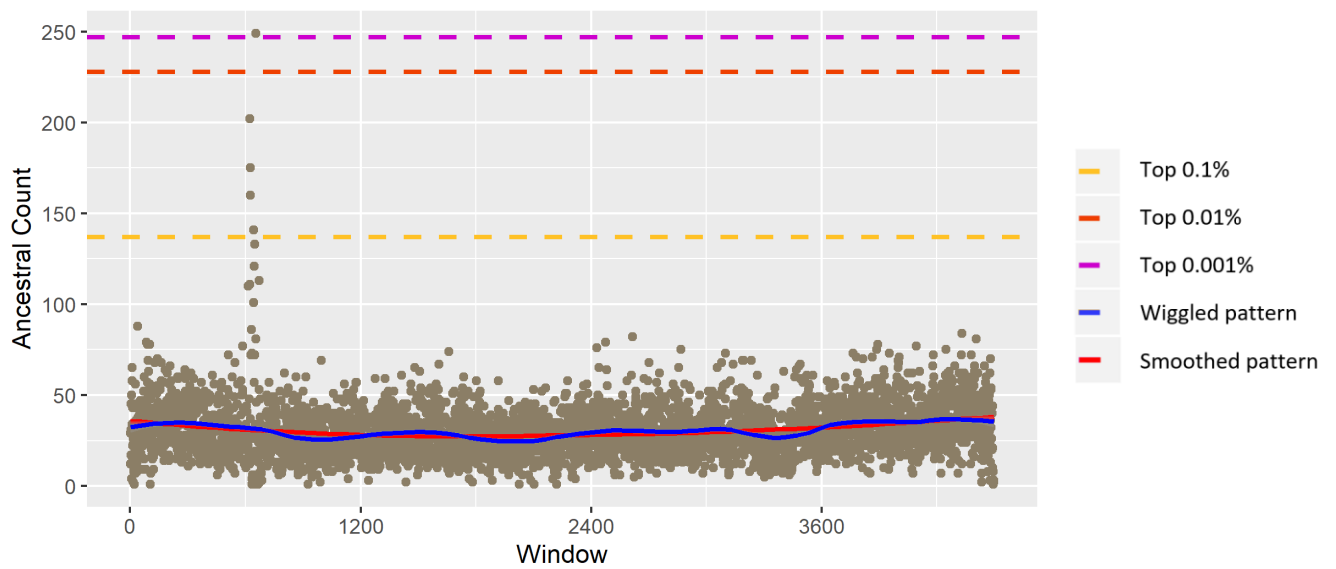
### Ancestral count in chr 26

Mean 29.52; SD 12.81



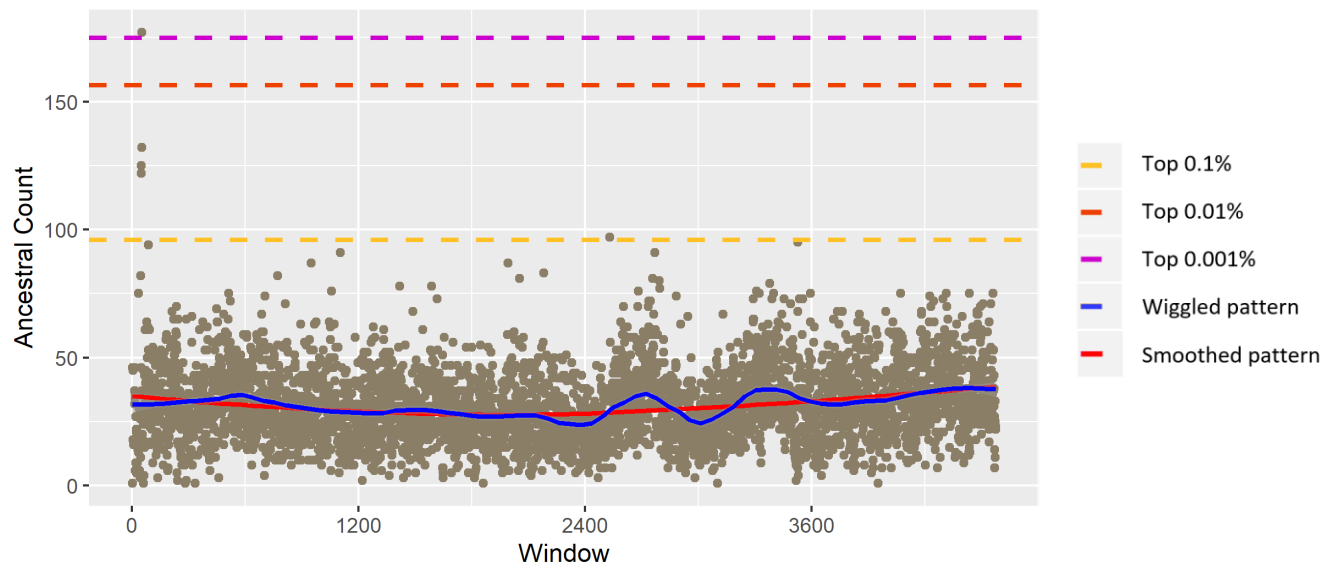
### Ancestral count in chr 27

Mean 30.58; SD 14.35



### Ancestral count in chr 28

Mean 31.4; SD 14.19



### Ancestral count in chr 29

Mean 30.7; SD 14.76

