

# Supplemental Figures

A prospective, iterative, adaptive trial of carfilzomib-based desensitization

Simon Tremblay,<sup>1</sup> James J. Driscoll, Adele Rike-Shields, David A. Hildeman, Rita R. Alloway,  
Alin L. Girnita, Paul A. Brailey, E. Steve Woodle

University of Cincinnati  
Division of Transplantation, Department of Surgery  
Cincinnati, OH, USA

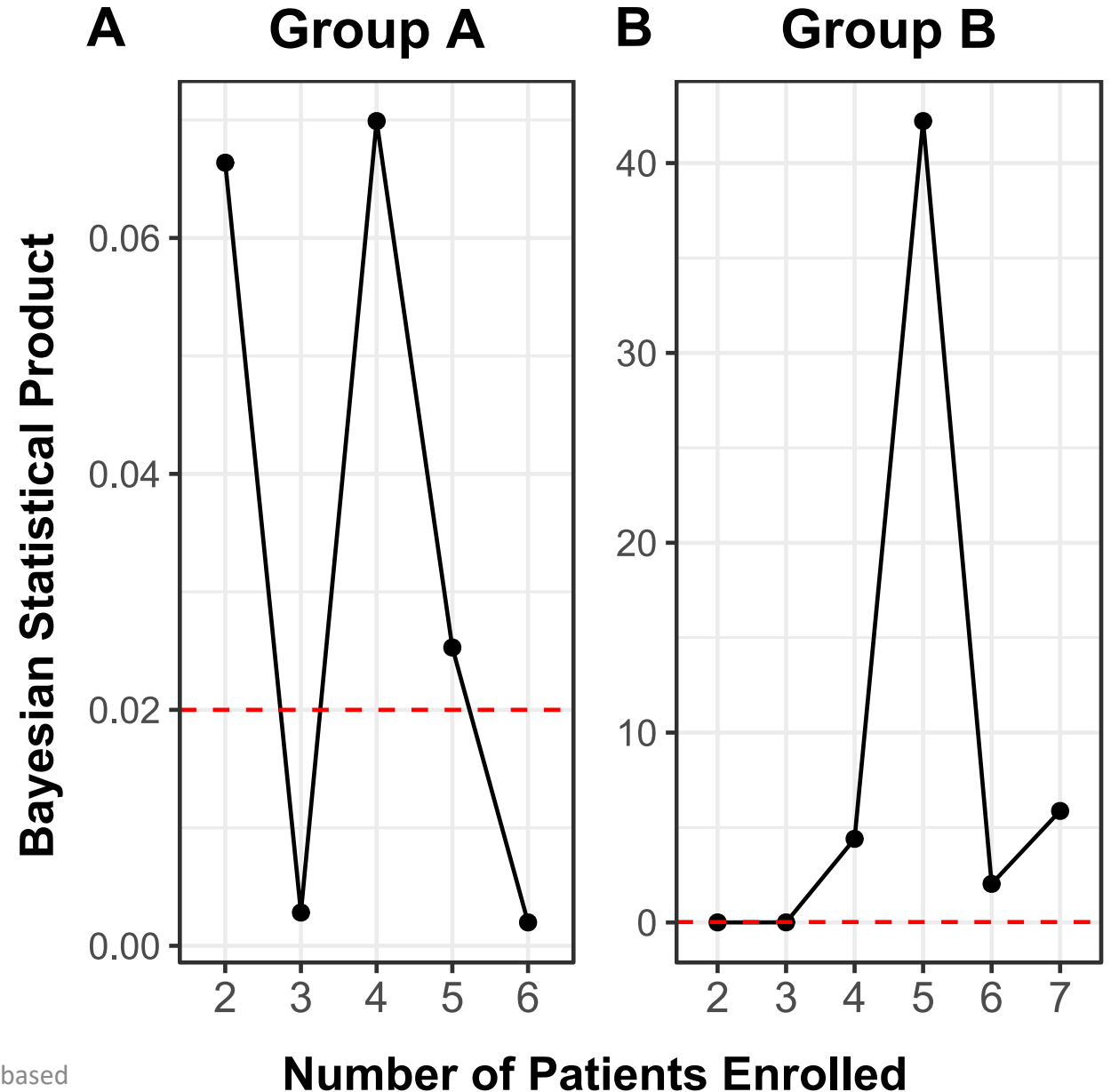
Am J Transplant. 2019. <https://doi.org/10.1111/ajt.15613>

# Figure S1

## Supplemental Figure 1. Adaptive enrollment using a Bayesian Statistical Product (BSP).

**A)** Progression of the BSP following the incremental enrollment of patients in group A. As the BSP reached the threshold level of 0.02, enrollment in group A was stopped after 6 patients.

**B)** Progression of the BSP following the incremental enrollment of patients in group B. As the BSP did not reach the threshold level of 0.02, enrollment in group B was continued past 6 patients. The red dotted line represents the 0.02 threshold.

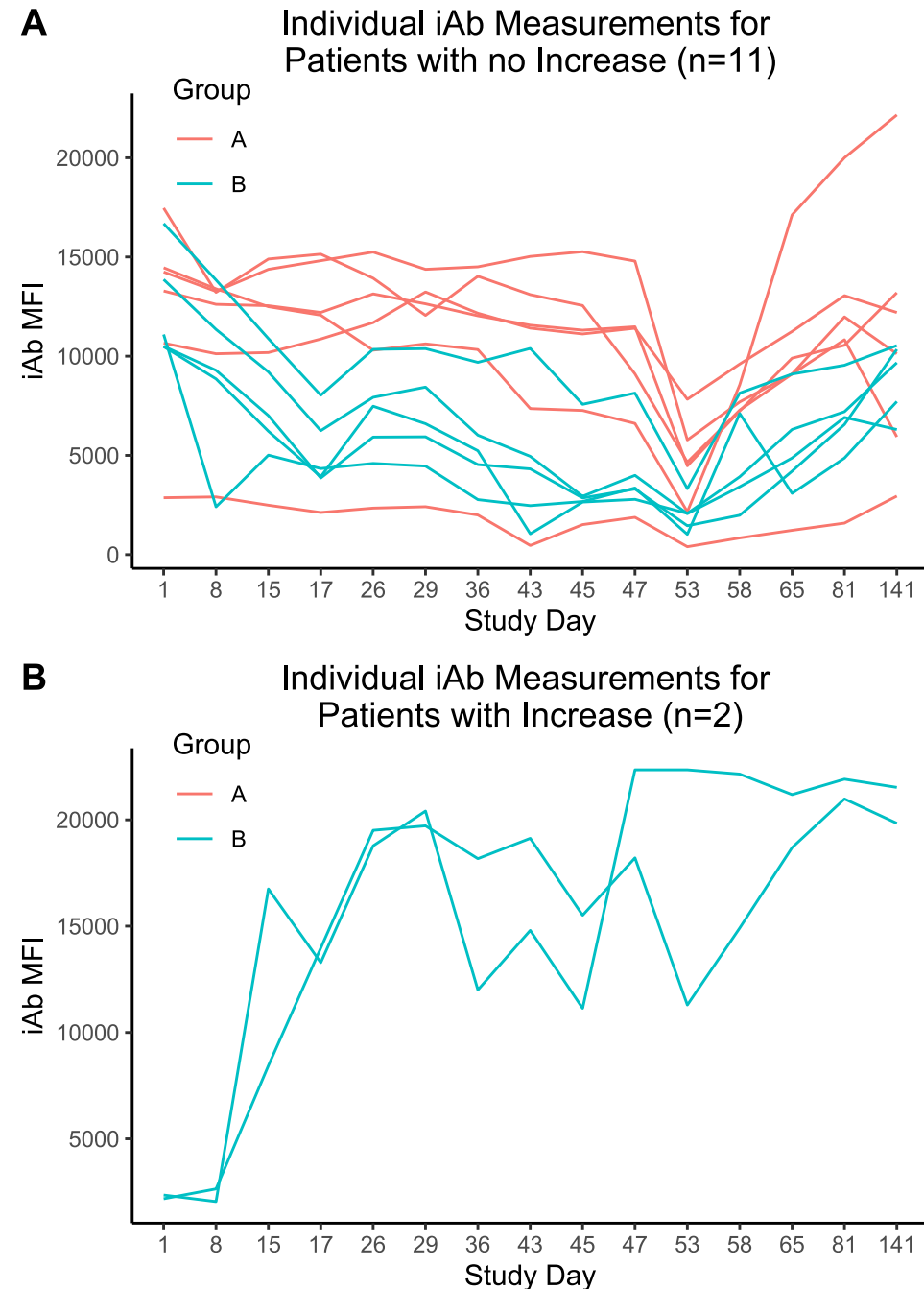


# Figure S2

## Supplemental Figure 2. Individual progression of iAb per group.

**A)** Individual progression of iAb for the entire trial for all patients (n=11) who did not have iAb increases at day 53. A reduction is noted by day 45, prior to the initiation of terminal plasmapheresis.

**B)** Individual progression of iAb for the entire trial for all patients (n=2) who did have iAb increases at day 53 (both due to upper respiratory tract infections).



# Figure S3

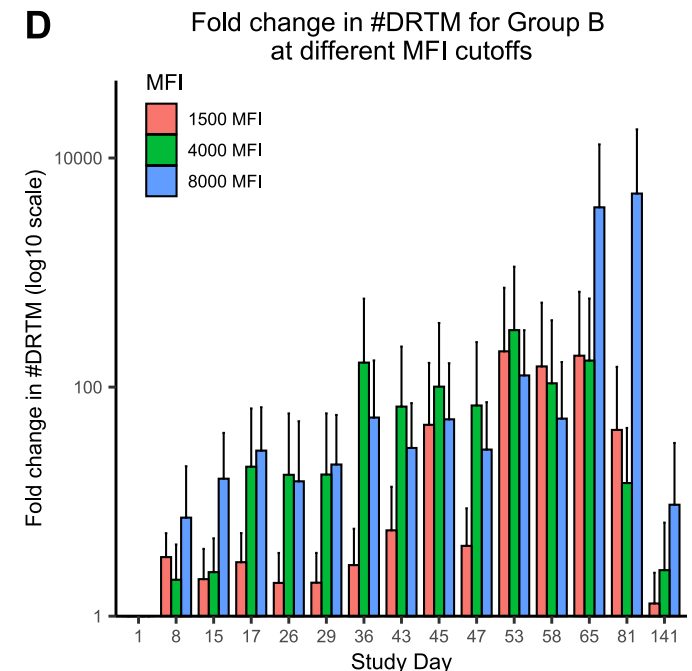
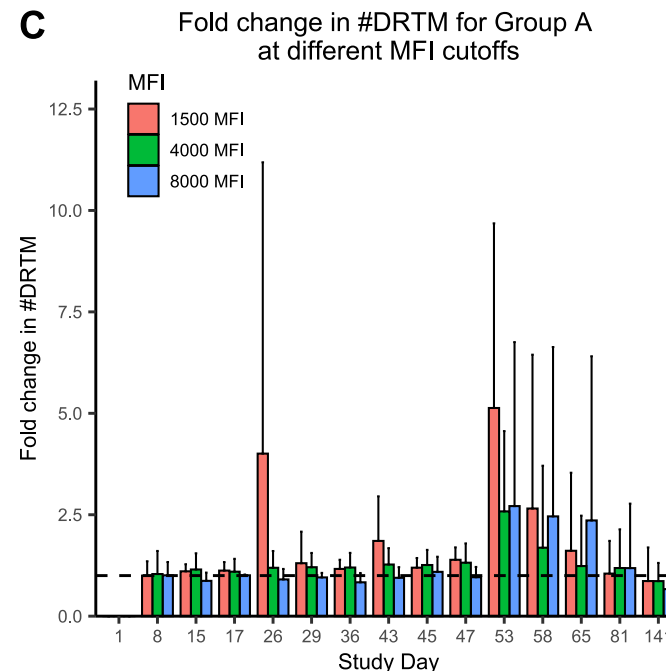
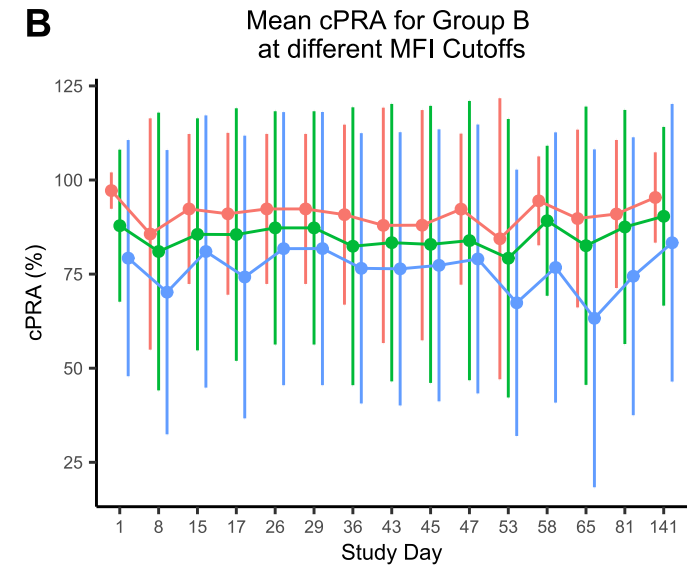
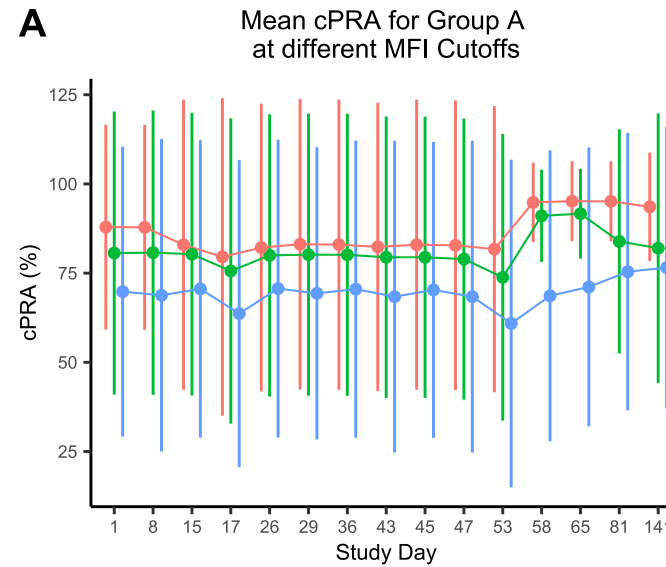
## Supplemental Figure 3. Effect of carfilzomib therapy on cPRA and #DRTM.

**A)** Change in cPRA at 3 different MFI cutoffs for group A.

**B)** Change in cPRA at 3 different MFI cutoffs for group B.

**C)** Fold change in #DRTM at 3 different MFI cutoffs for group A. The horizontal dotted line represents a ratio of 1.

**D)** Fold change in #DRTM at 3 different MFI cutoffs for group B using a logarithmic scale to represent the change in fold of #DRTM.



# Figure S4

**Supplemental Figure 4. The proportion of live bone marrow CD138<sup>+</sup> cells as a function of live bone marrow mononuclear cells is reduced following 1 cycle of carfilzomib.**

