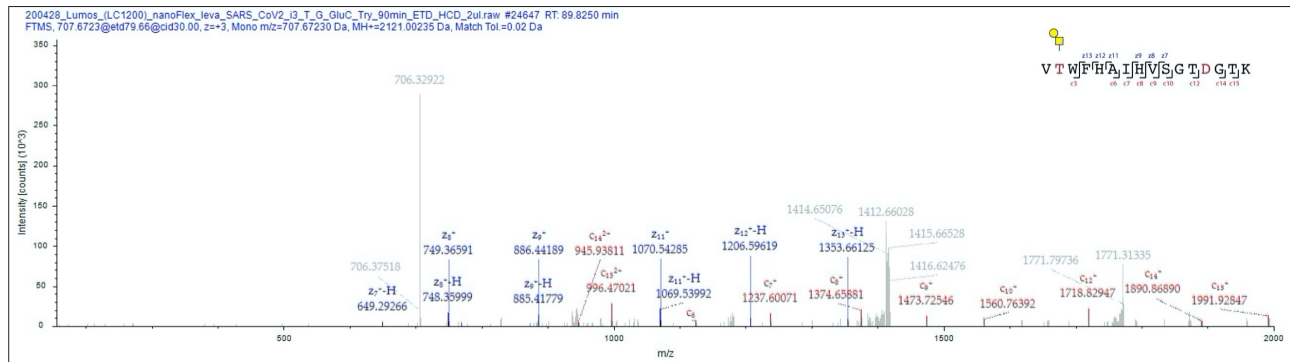
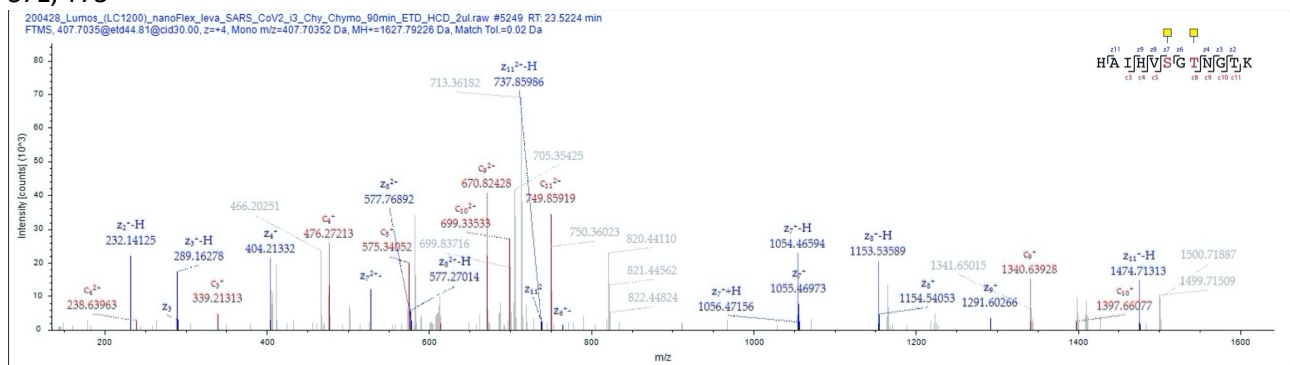


**Figure S3. Examples of ETD MS2 spectra representing the different O-glycosites identified using the Orbitrap Fusion Lumos mass spectrometer.** c and z product fragment ions are annotated in the peptide sequence. The source raw file is indicated in the top left corner (i1 – monomeric RBD expressed in insect cells, i3 – ectodomain expressed in insect cells, h3m – ectodomain expressed in HEK 293F cells).

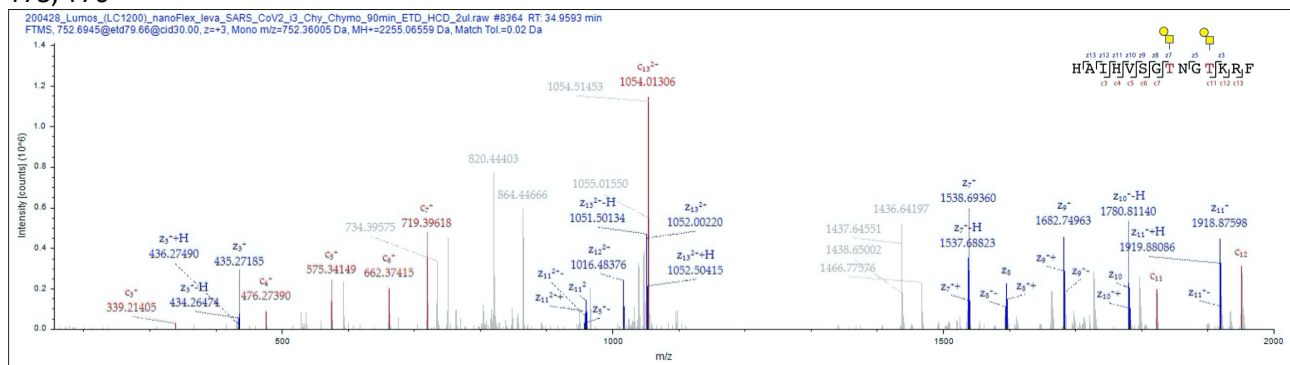
**T63**



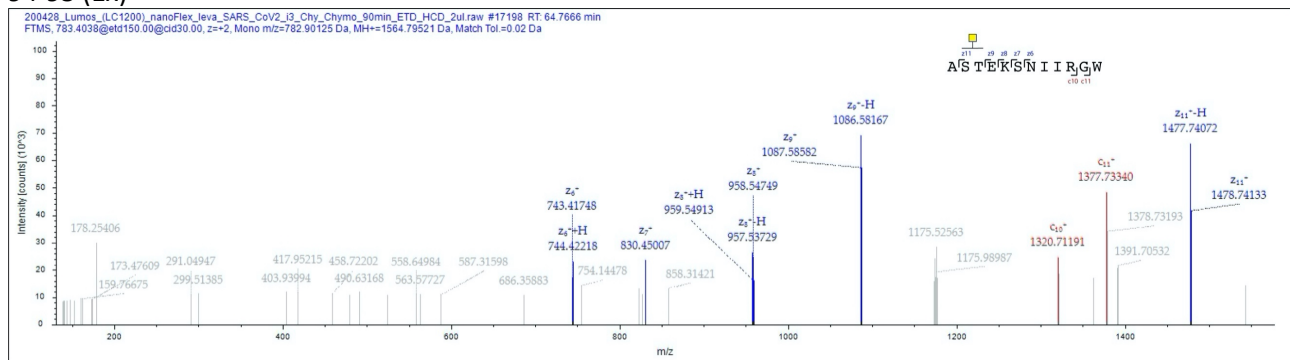
**S71, T73**



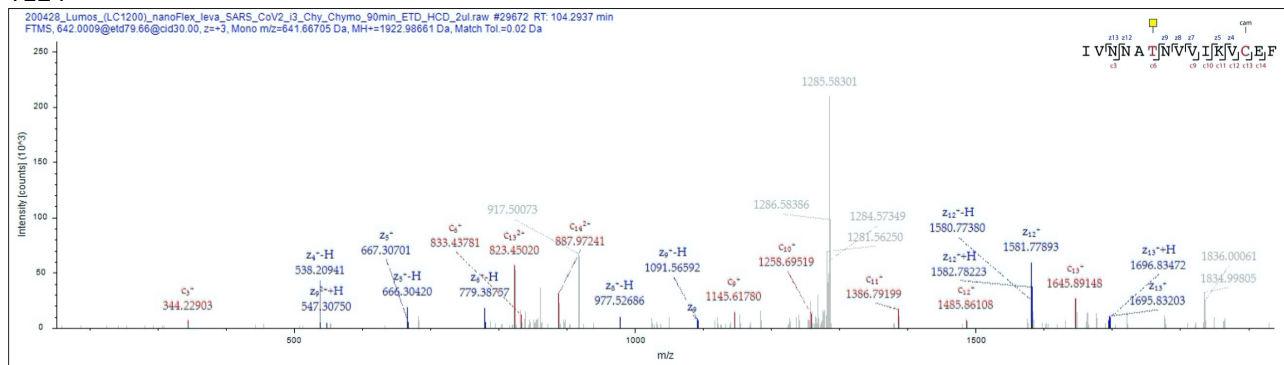
**T73, T76**



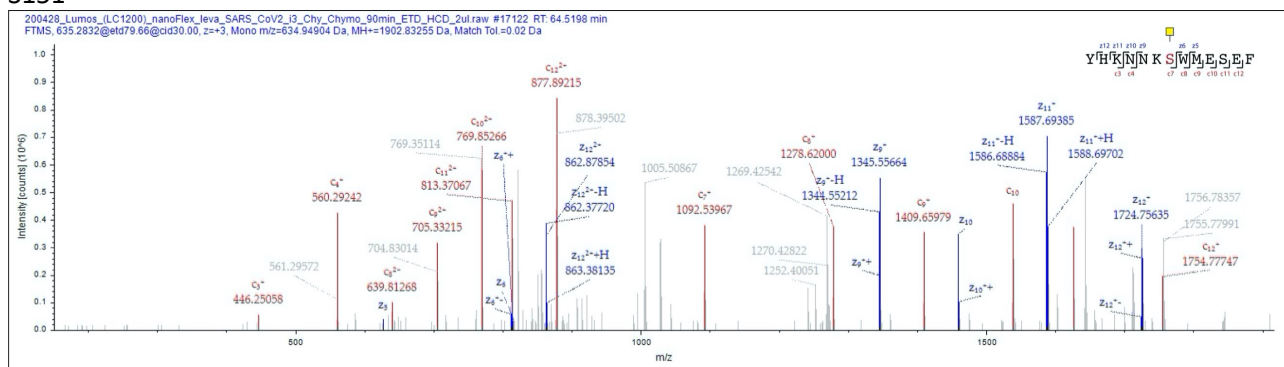
**94-95 (1x)**



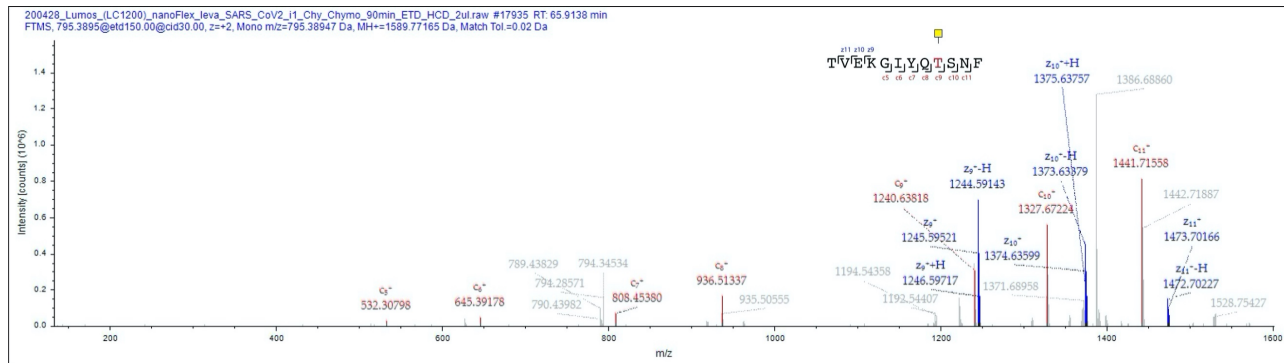
### T124



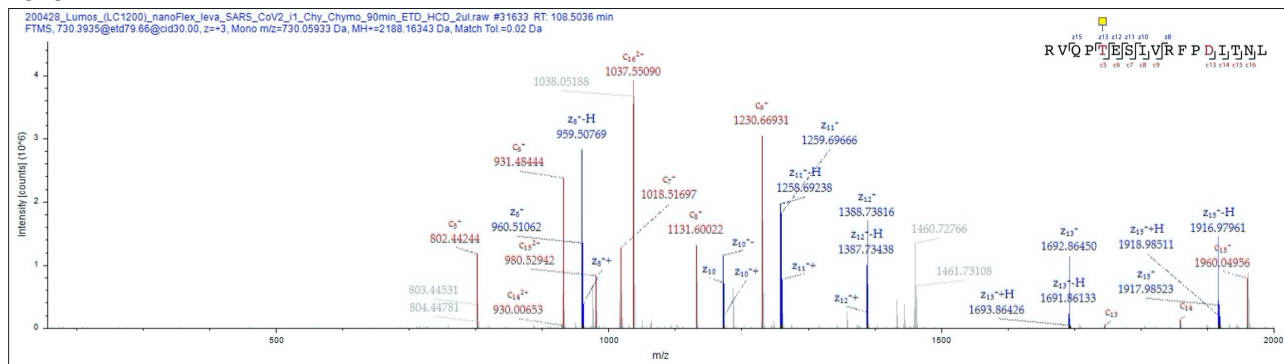
### S151



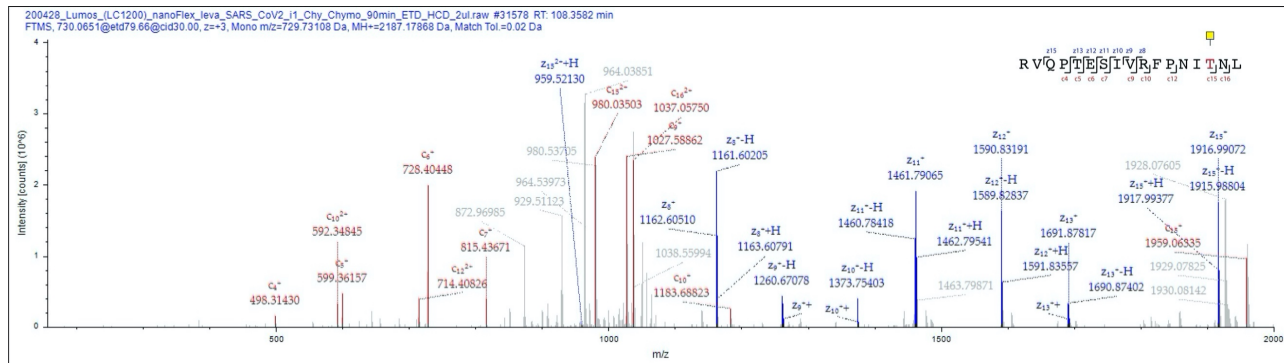
### T315



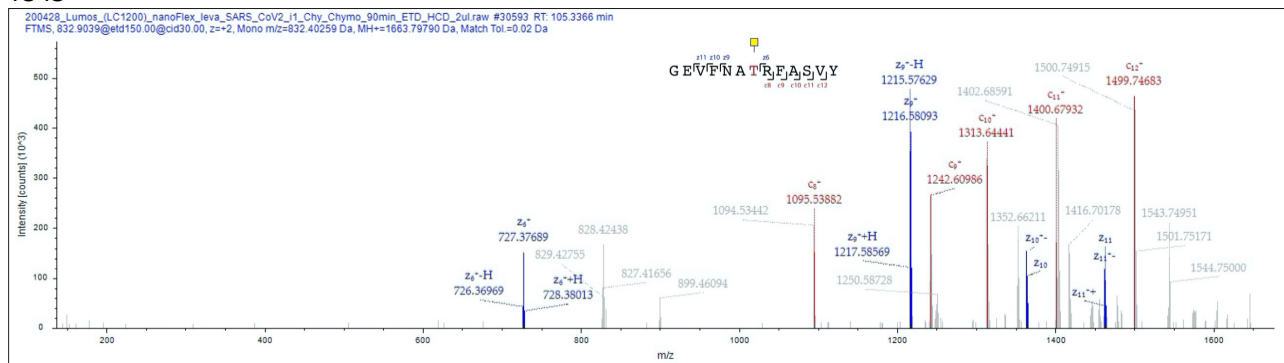
### T323



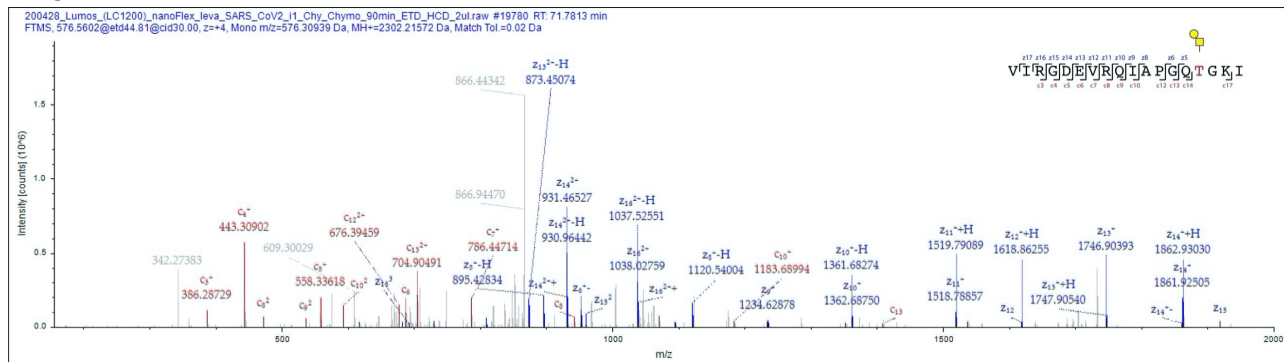
### T333



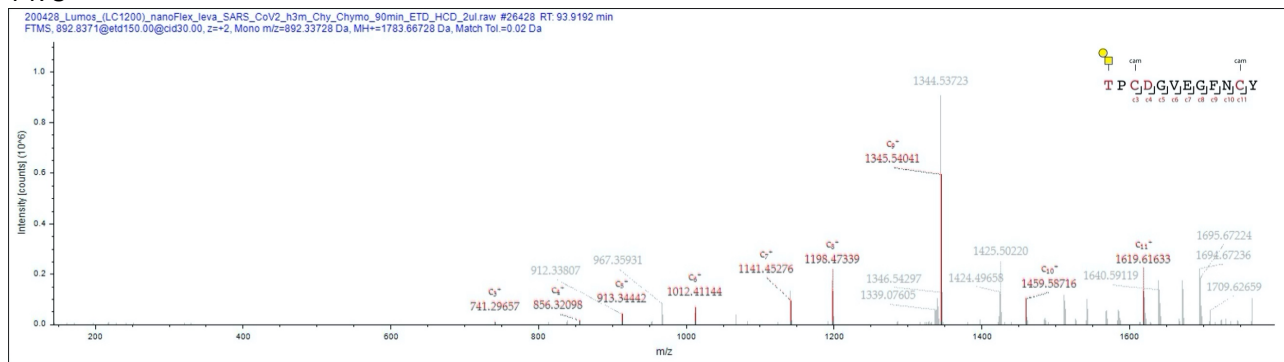
### T345



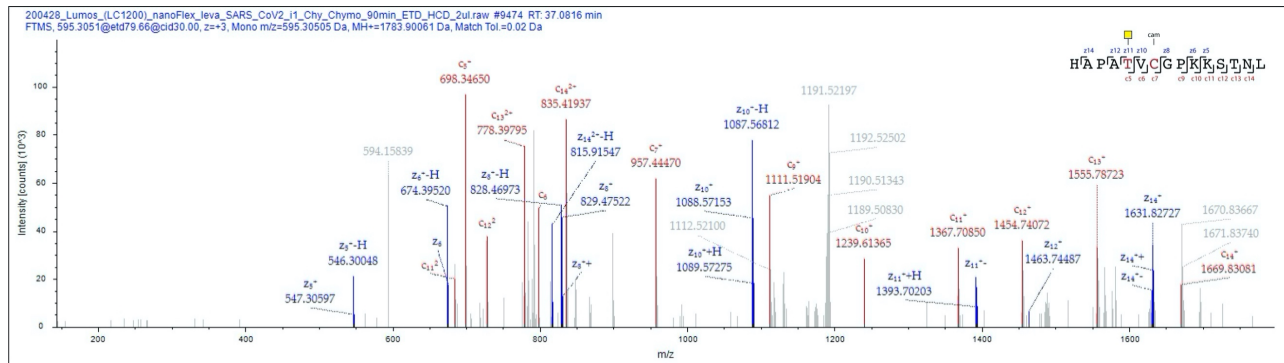
### T415



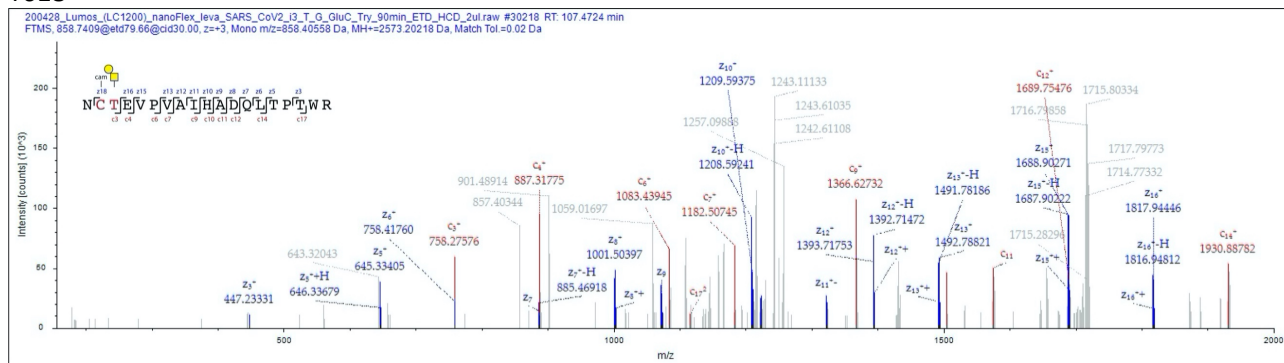
### T478



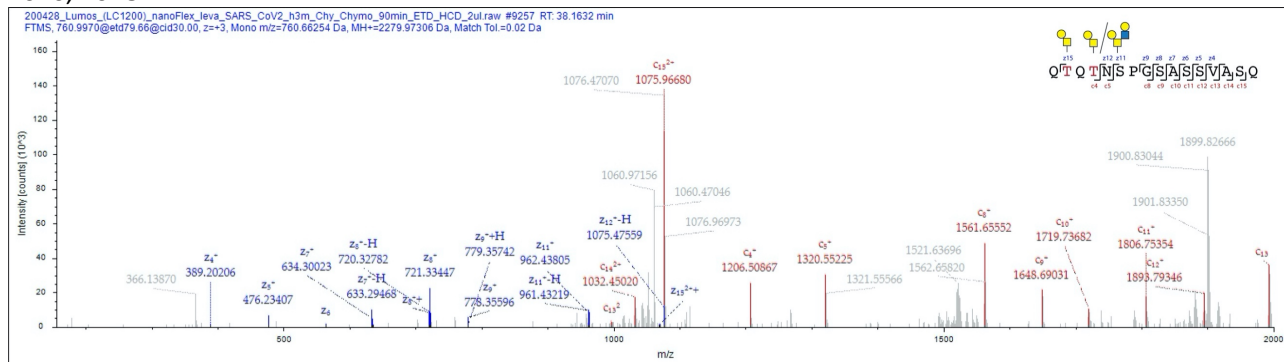
### T523



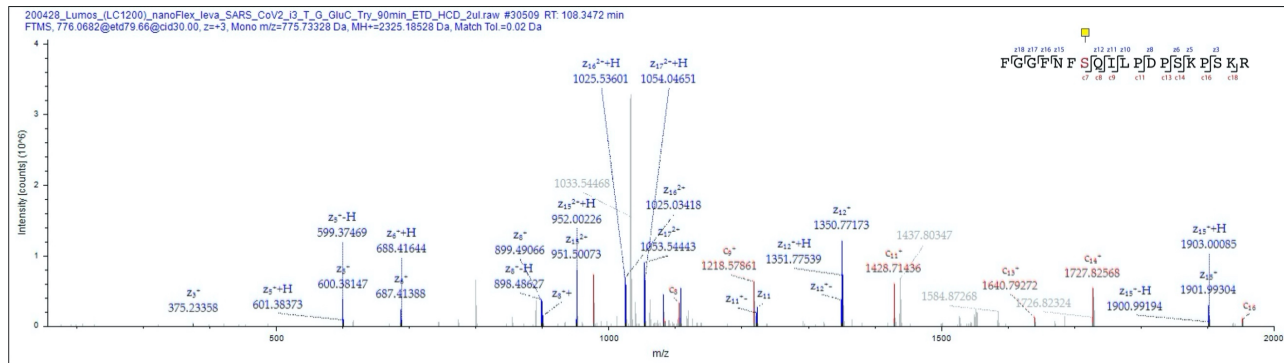
### T618



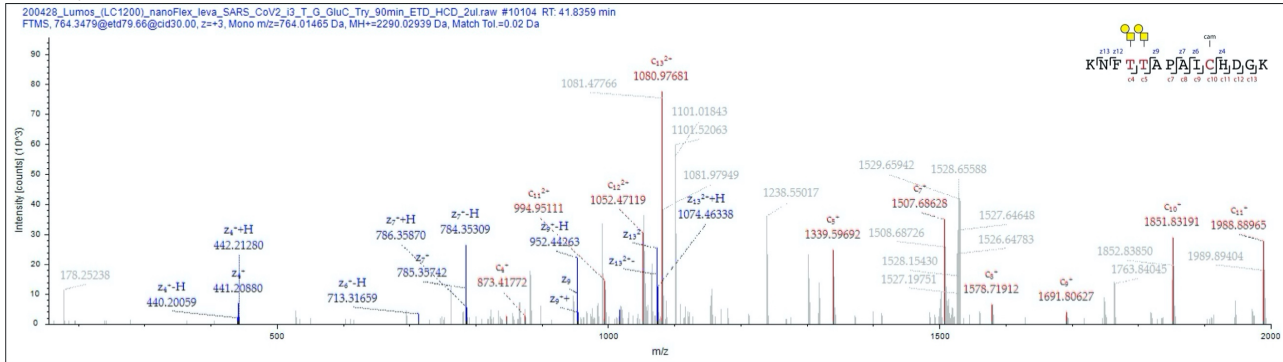
### T676, T678



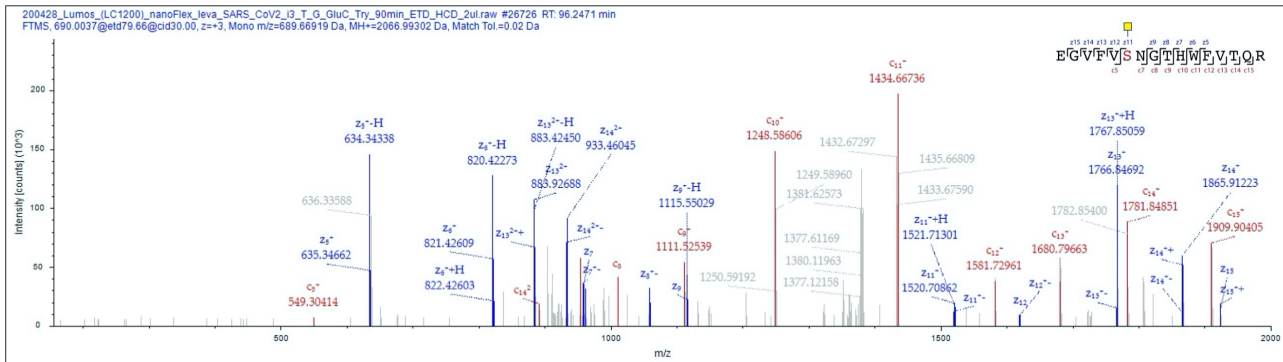
### S803



### T1076, T1077



### T1097



### T1097, T1100

