

## **Association Mapping for Maize Stover Yield and Saccharification Efficiency Using a Multi-Parent Advanced Generation Intercross (MAGIC) Population**

López-Malvar, A<sup>1\*</sup>; Butron A<sup>3</sup>; Malvar, RA<sup>3</sup>; Gómez, LD<sup>2</sup>; Faas, L<sup>2</sup>; McQueen-Mason, S<sup>2</sup>; Revilla P<sup>3</sup>; Figueroa-Garrido, DJ<sup>1</sup>; Santiago, R<sup>1</sup>

<sup>1</sup>Facultad de Biología, Departamento de Biología Vegetal y Ciencias del Suelo, Universidad de Vigo, As Lagoas Marcosende, Vigo 36310, Spain. Agrobiología Ambiental, Calidad de Suelos y Plantas (UVIGO), Unidad Asociada a la MBG (CSIC);

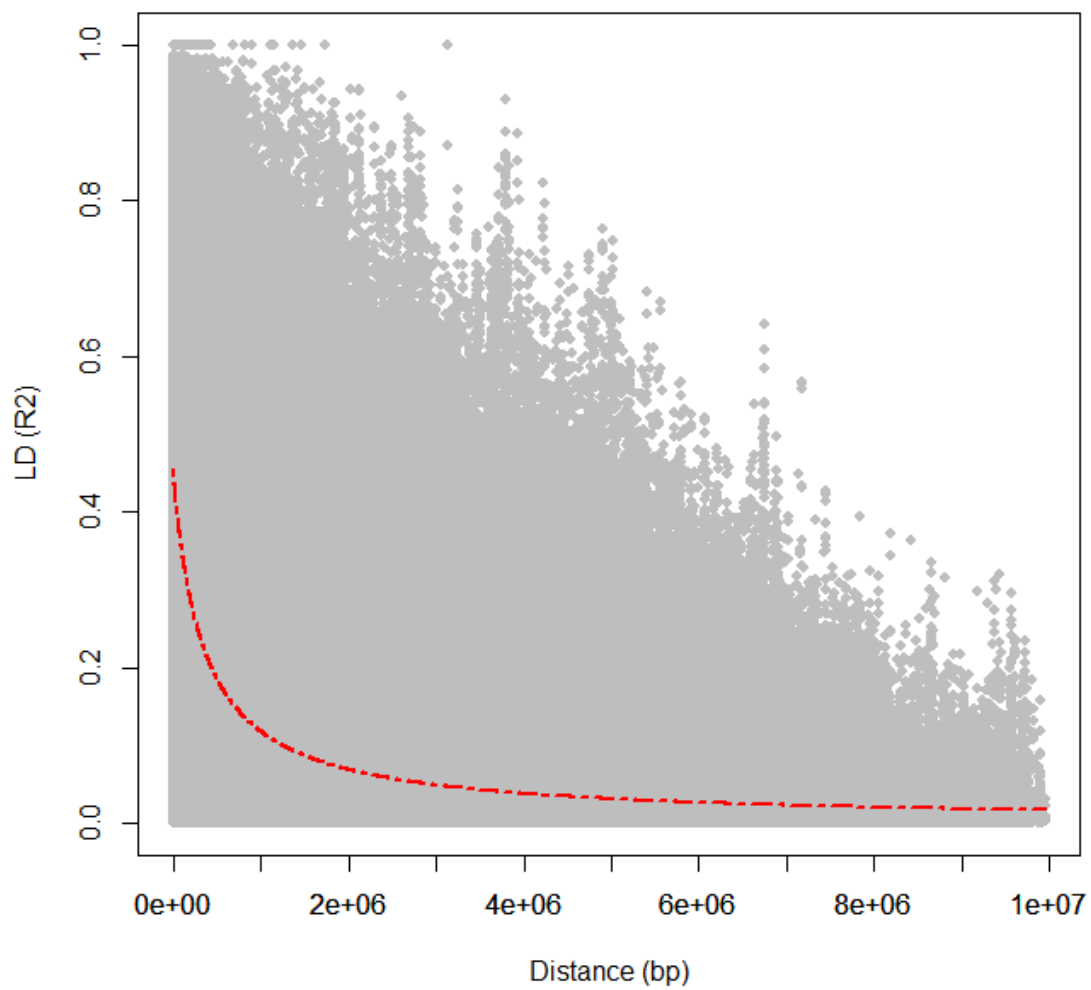
<sup>2</sup>Misión Biológica de Galicia (CSIC), Pazo de Salcedo, Carballeira 8, 36143, Spain

<sup>3</sup>CNAP, Department of Biology, University of York, Heslington, York YO10 5YW, UK

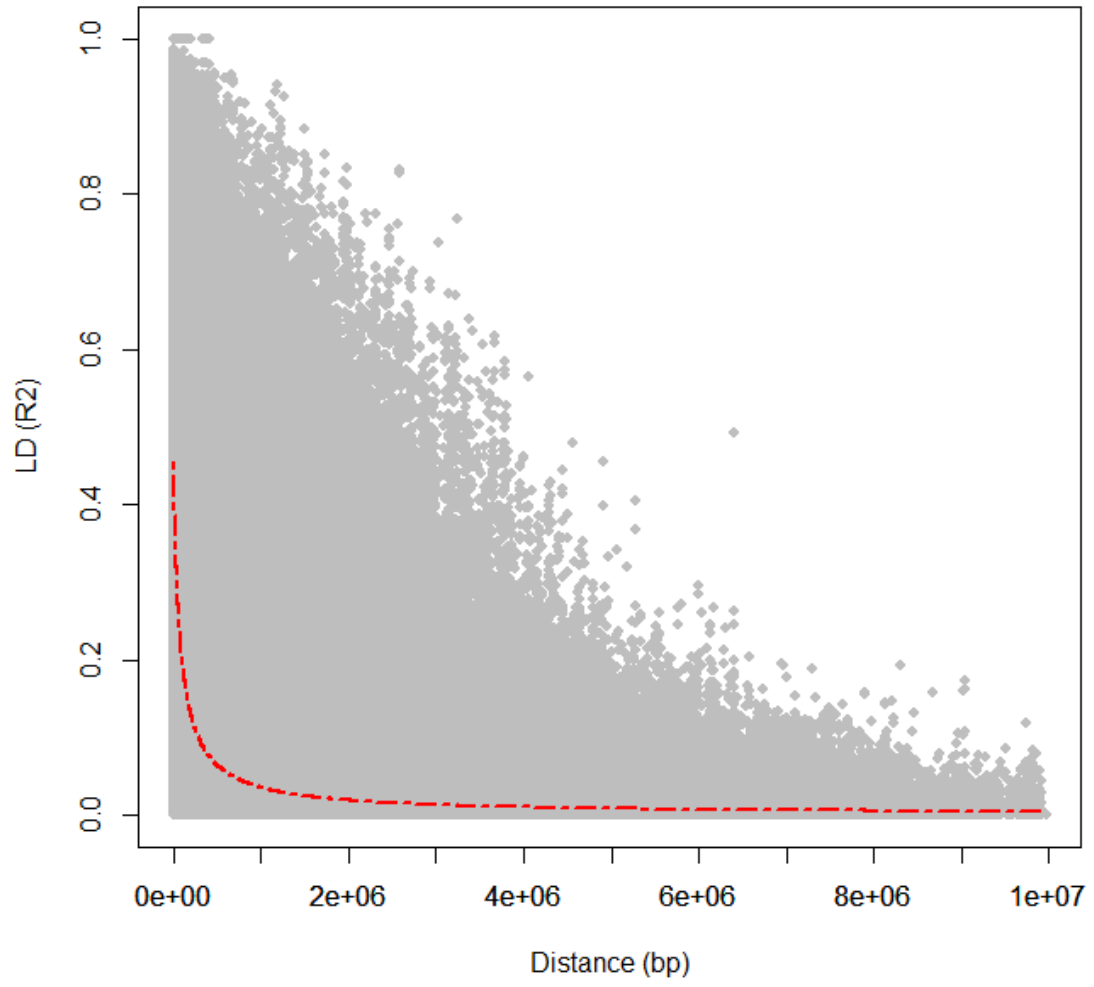
\*Corresponding author: [alopezmalvar@uvigo.es](mailto:alopezmalvar@uvigo.es)

**Supplementary Figure 1: Decay of LD ( $R^2$ ) as a function of distance (bp) in a 10 Mbp window. Regression line is based on Hill and Weir (1988)**

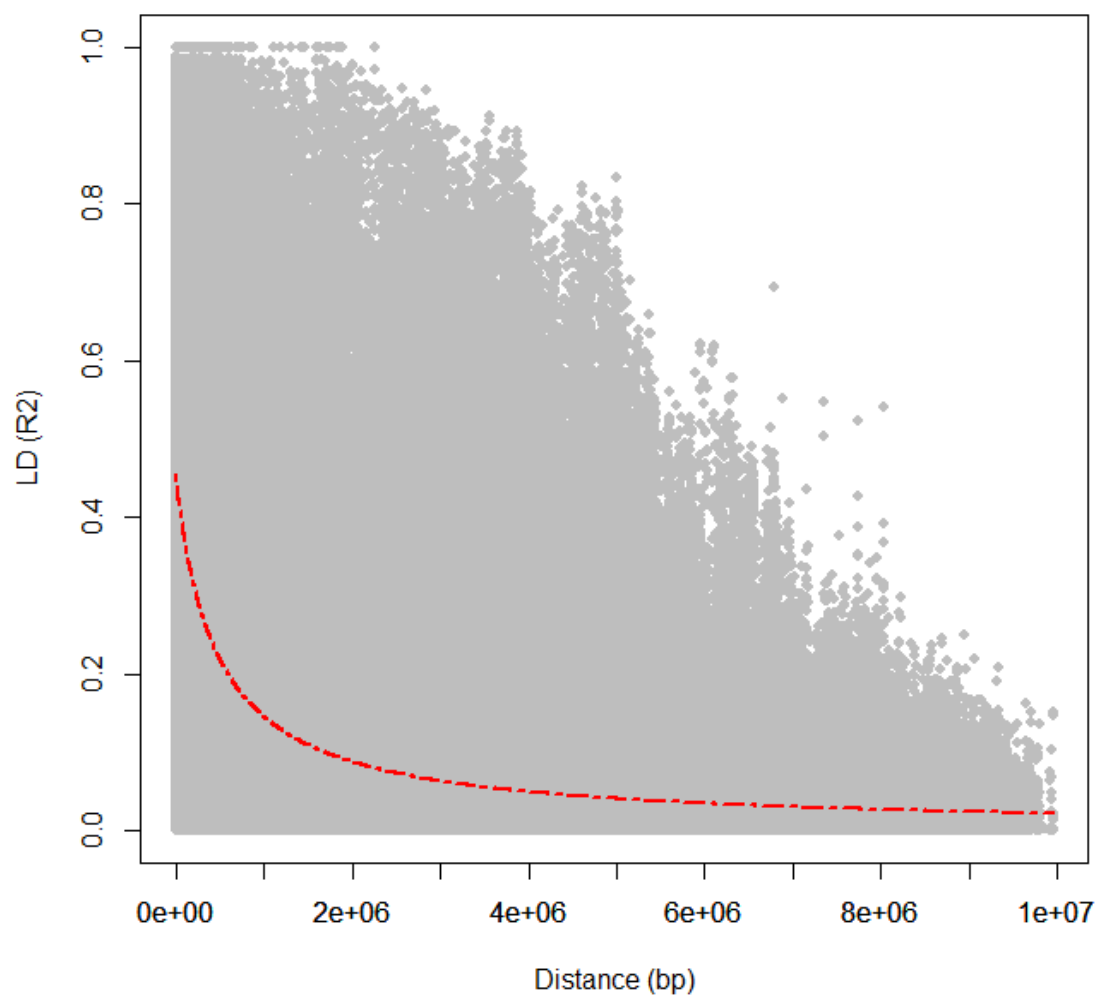
### LD decay S1\_24739947



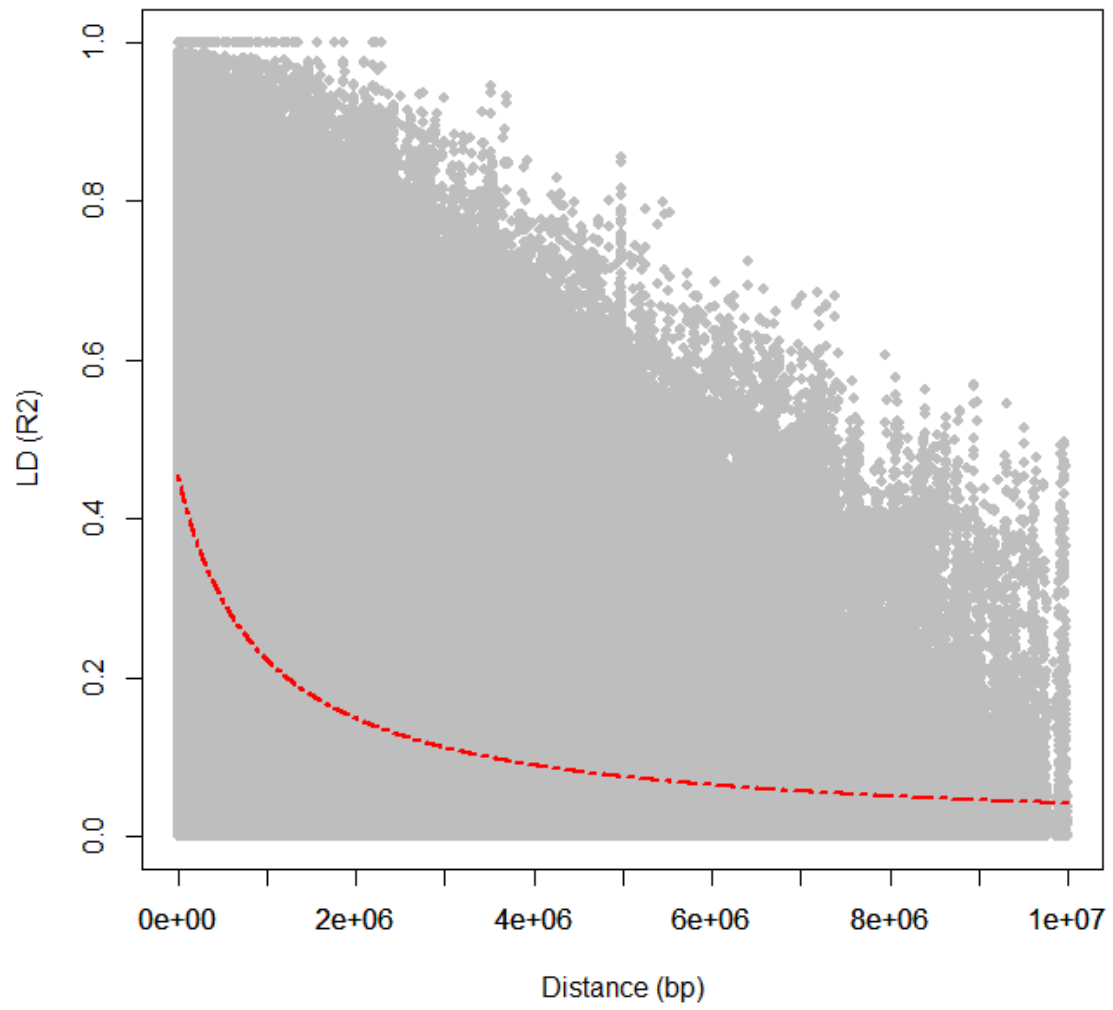
### LD decay S1\_5087216



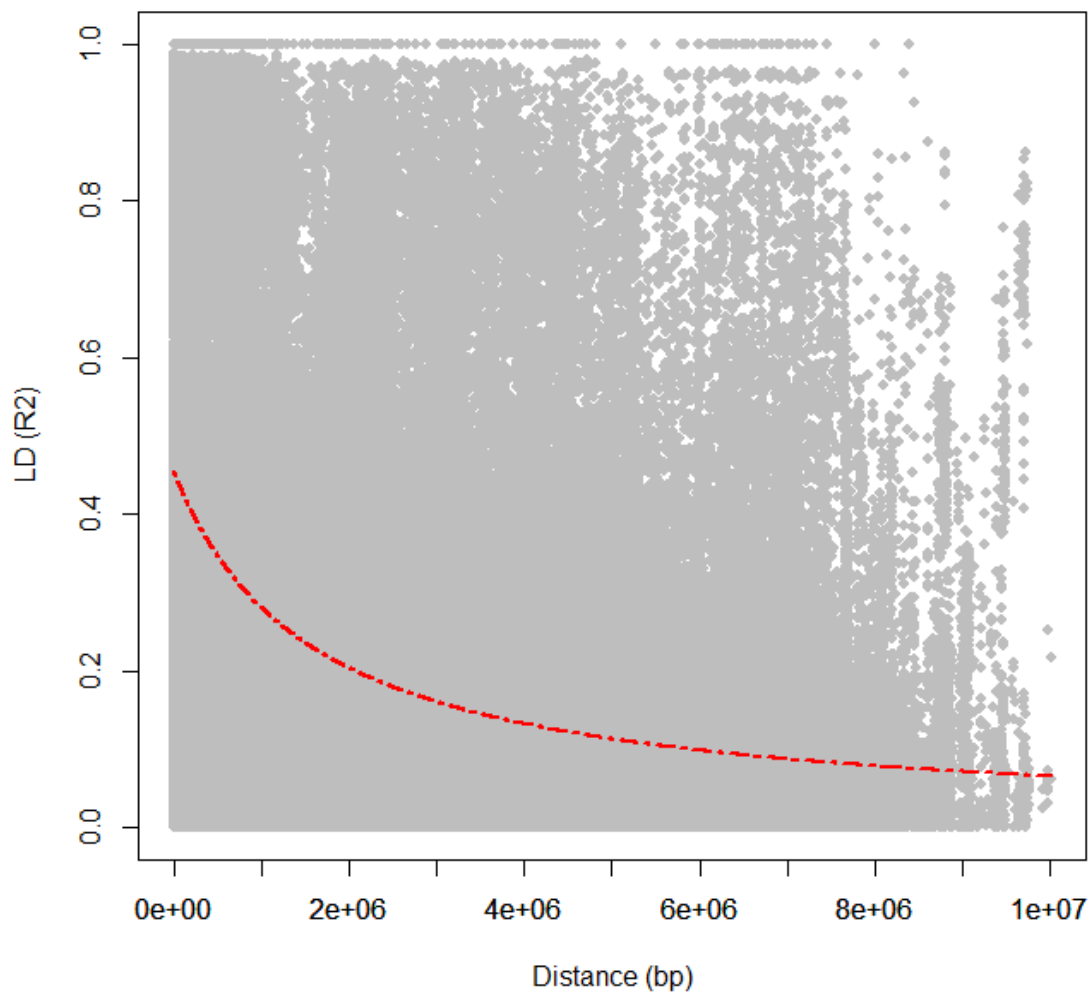
### LD decay S2\_23558946



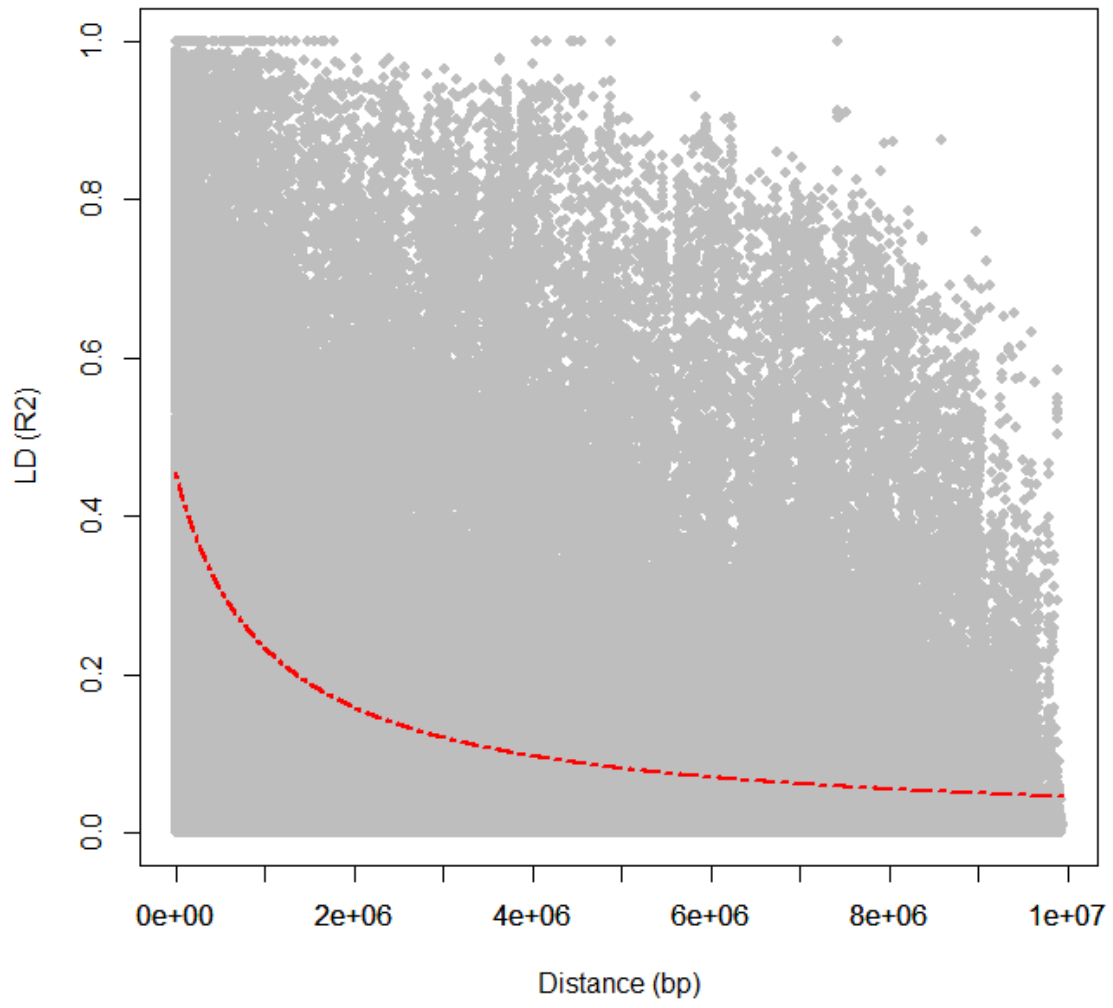
### LD decay S2\_42097780



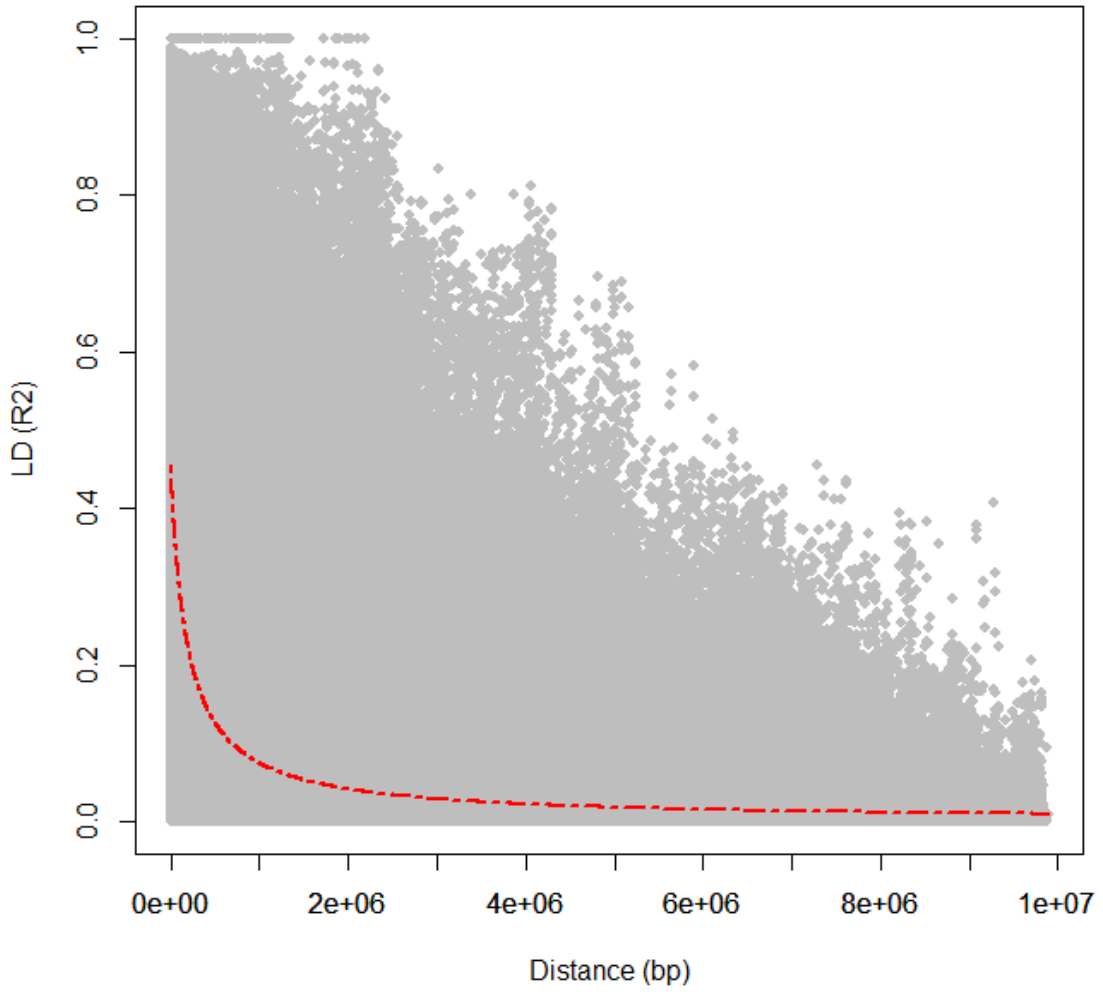
### LD decay S3\_40940154



### LD decay S3\_143233104

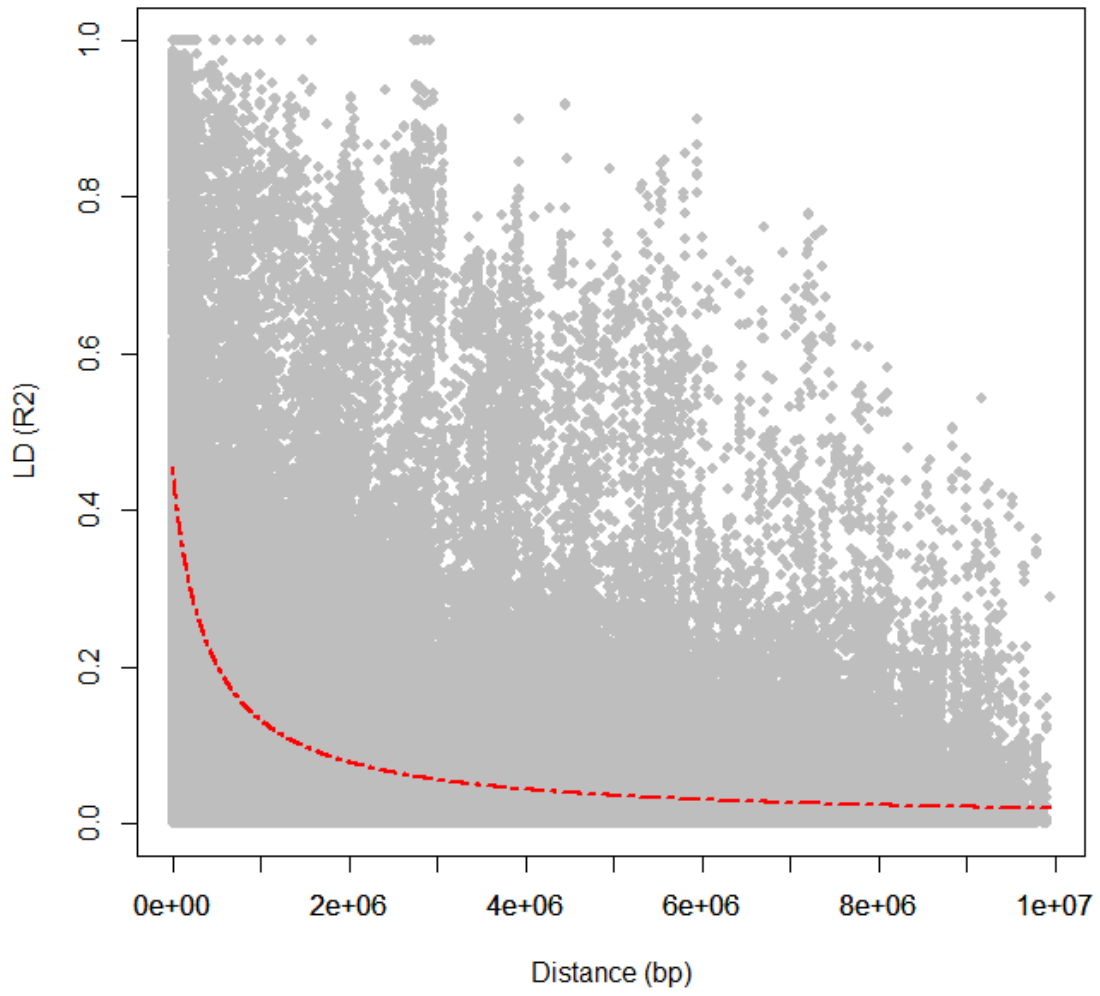


### LD decay S3\_17552327

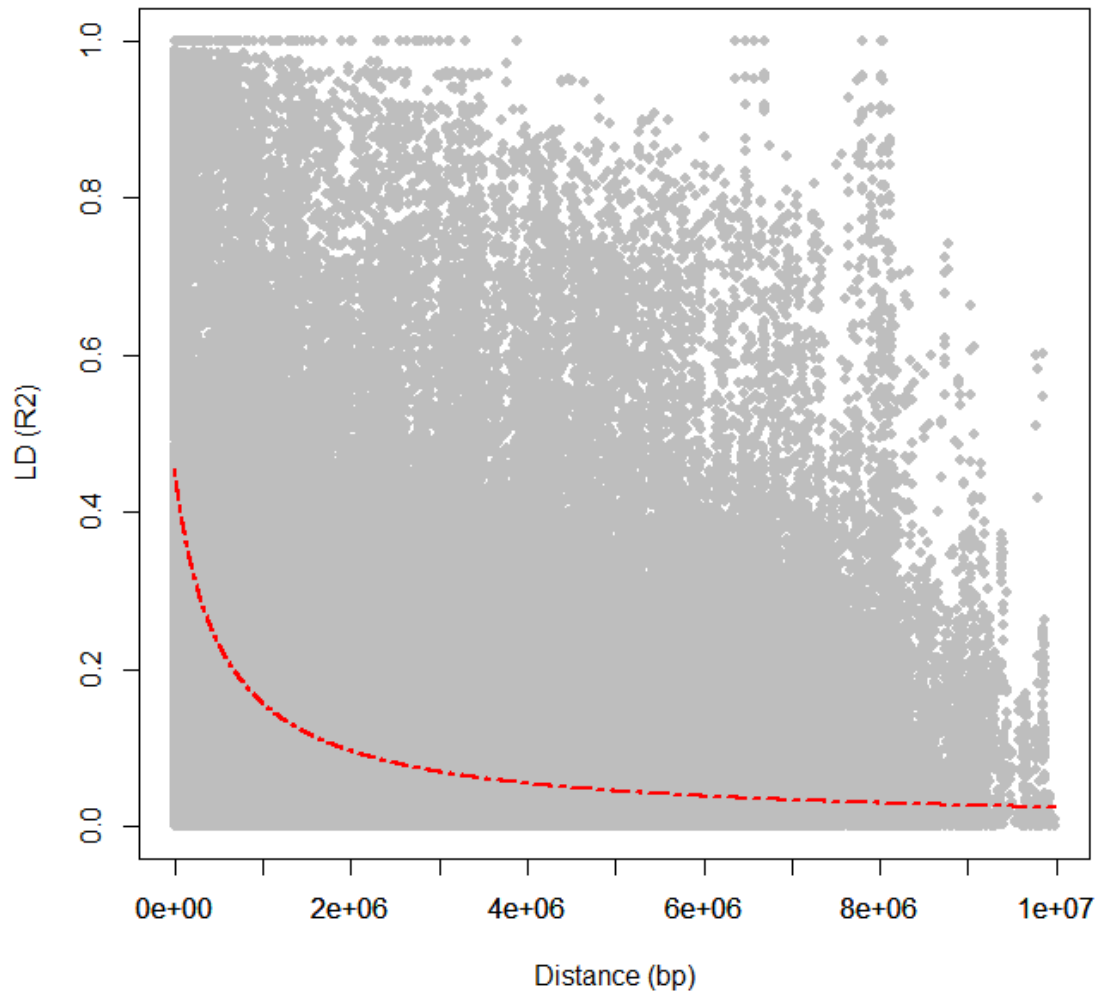




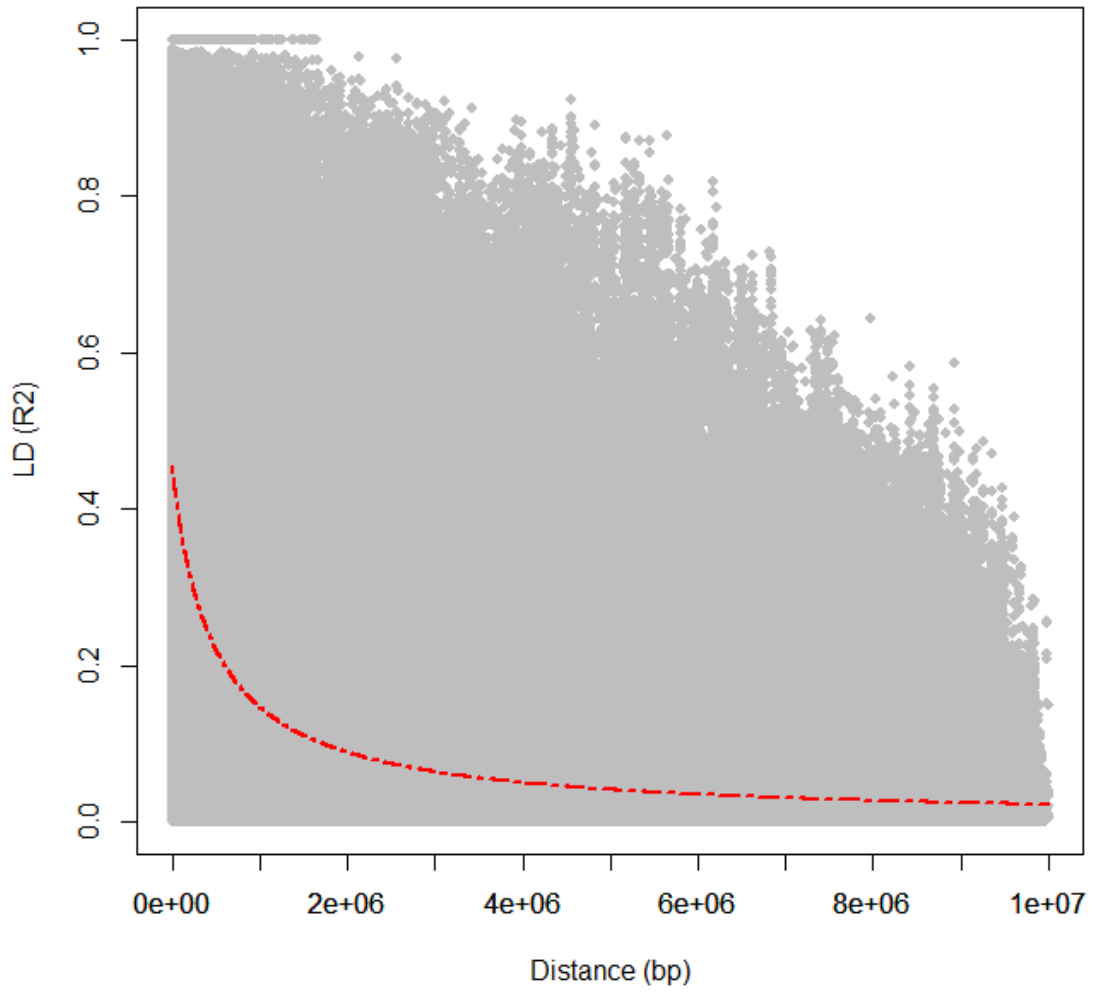
### LD decay S4\_150637846



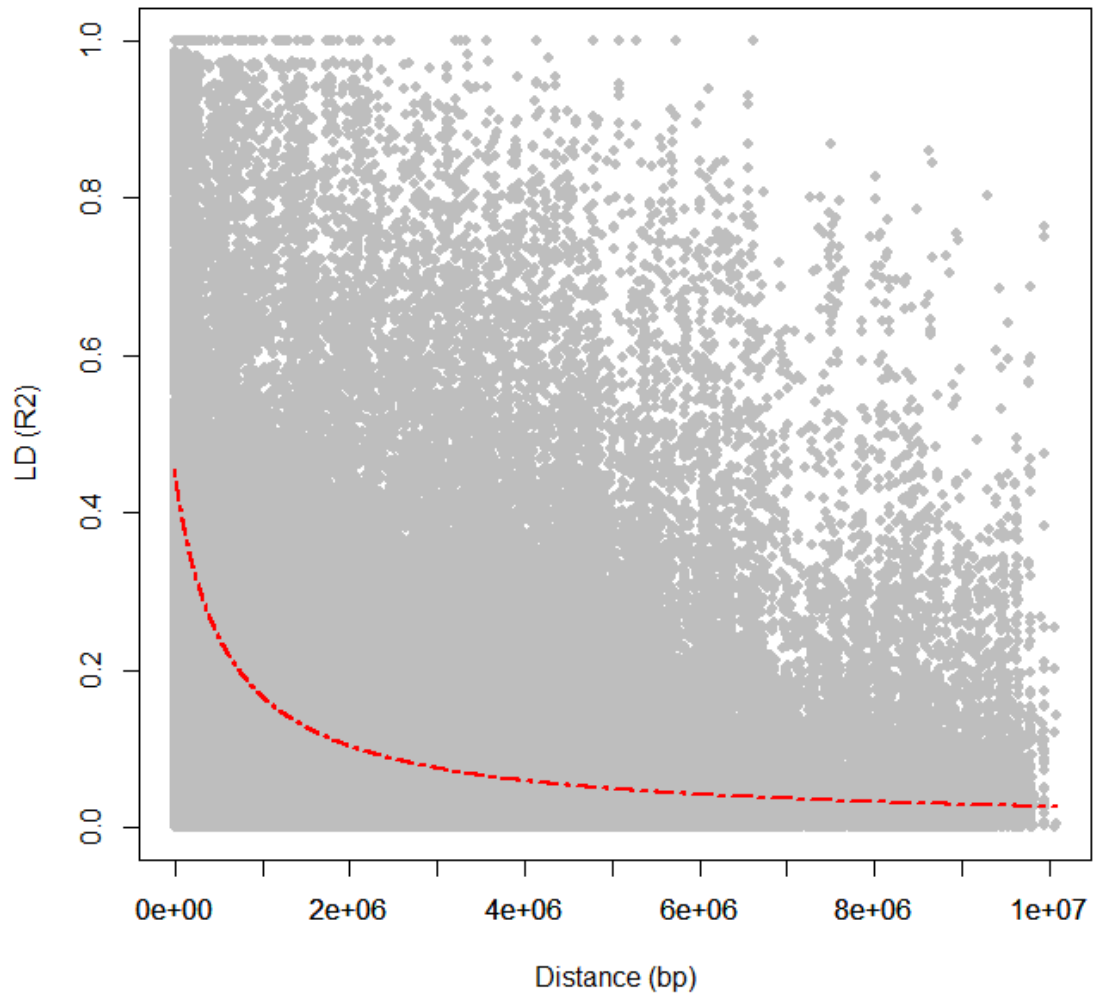
### LD decay S5\_67669376



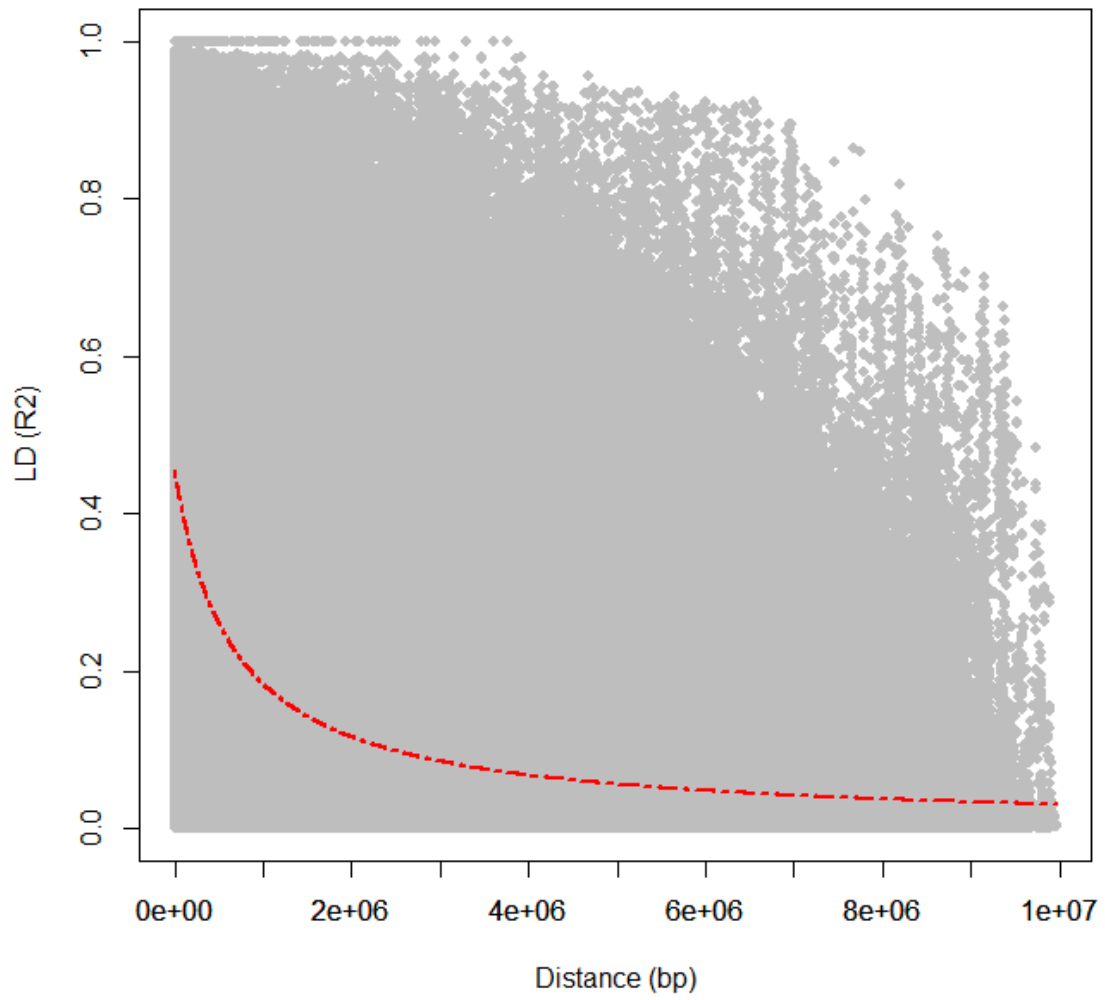
### LD decay S5\_194837018



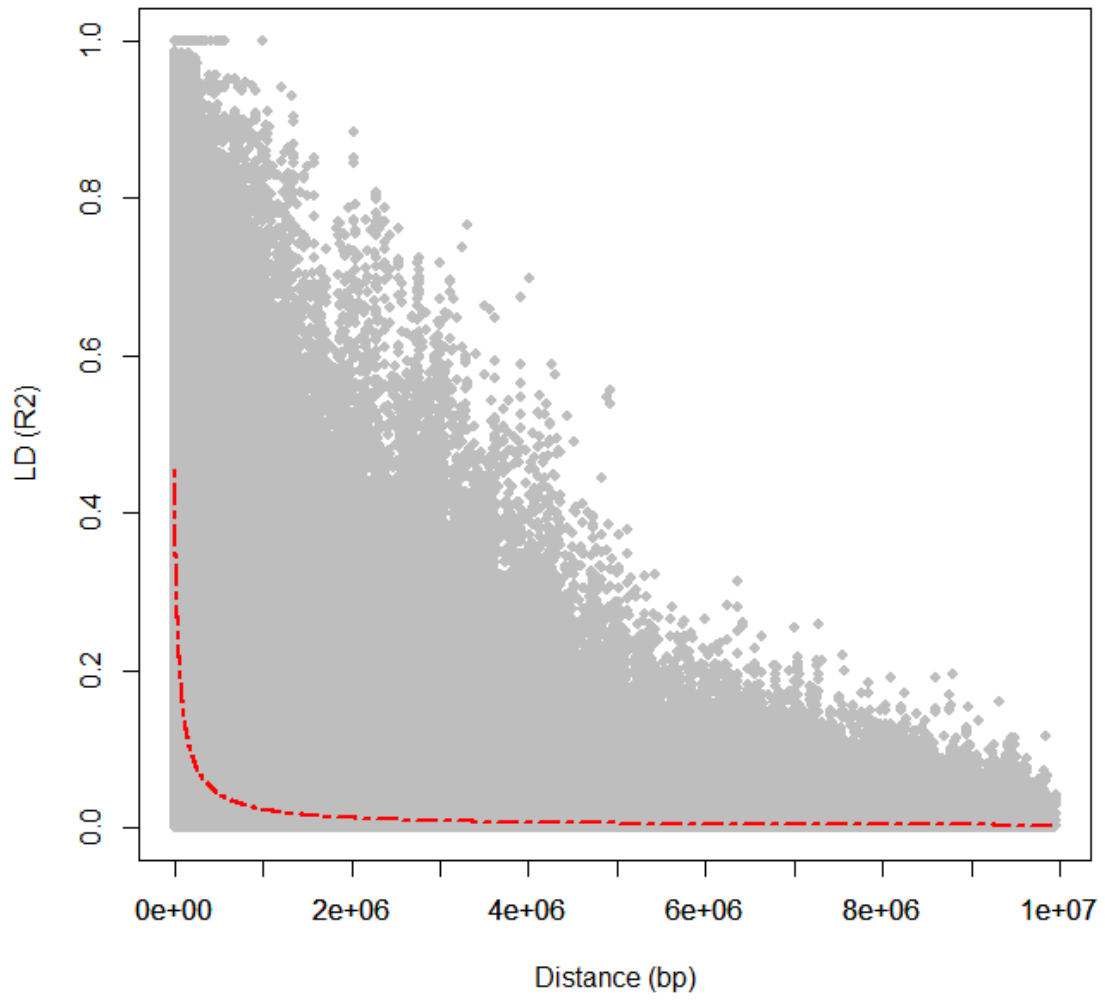
### LD decay S7\_100264894



### LD decay S8\_152321302



### LD decay S10\_141557921



### LD decay S6\_163628712-S6\_163830244

