
Supplementary information

**Immune receptor inhibition through
enforced phosphatase recruitment**

In the format provided by the
authors and unedited

Supplementary Figure 1

Figure 1f

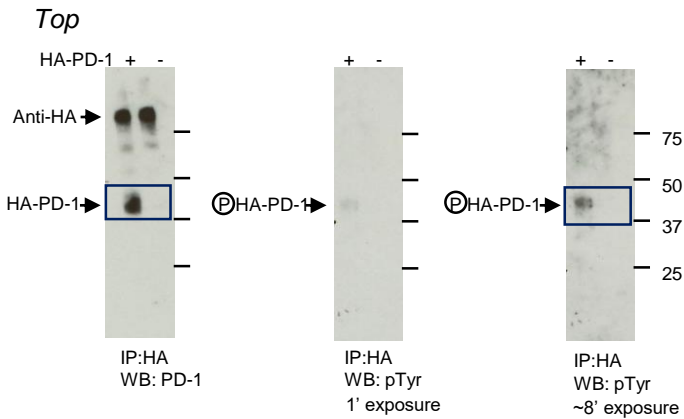
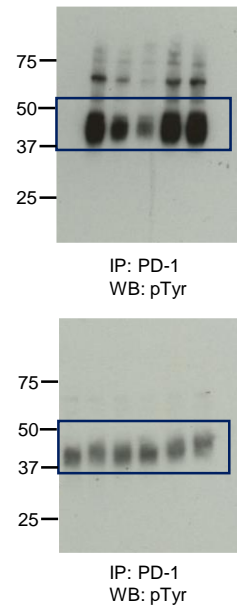


Figure 2e



Bottom

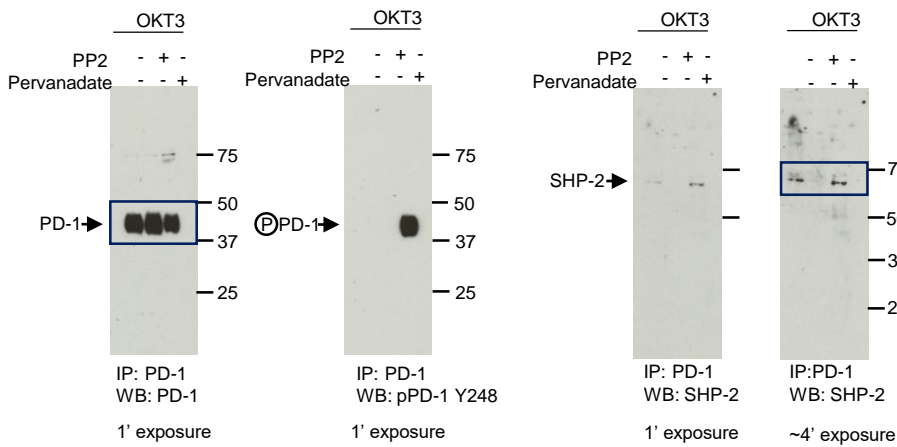


Figure 5a

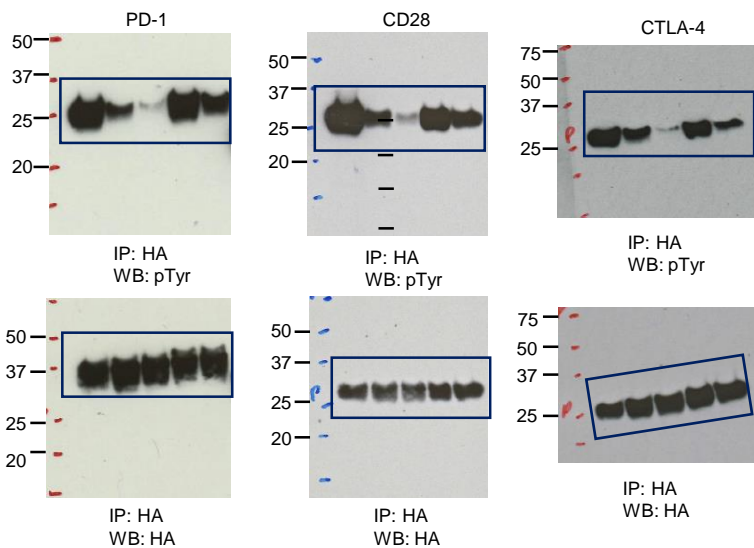
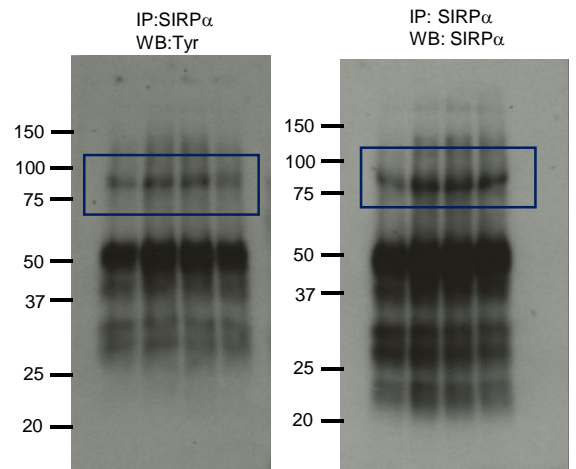


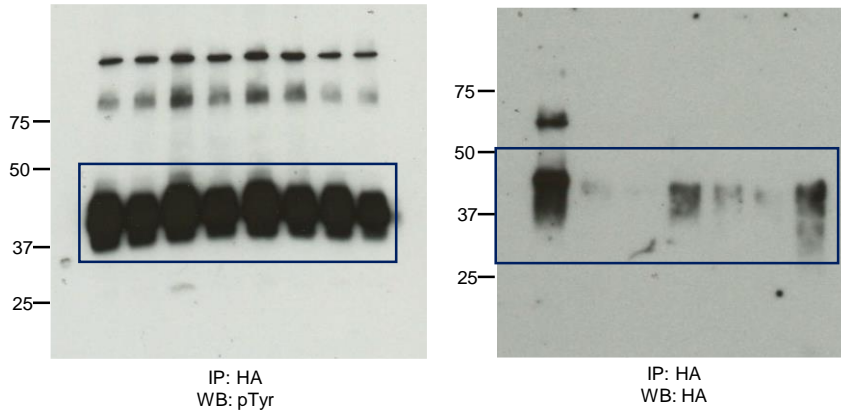
Figure 5d



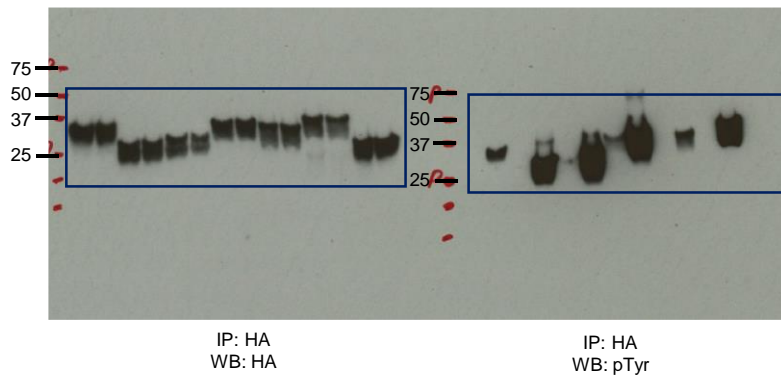
Supplementary Fig. 1. Raw western blot source images. Arrows indicate band of interest. Boxes indicate cropping for representative images. Corresponding Figures are indicated. (Continues next page.)

Supplementary Figure 1 (cont.)

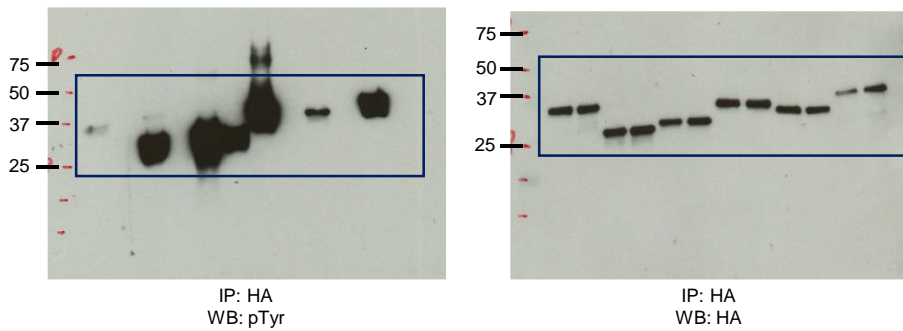
Extended Data Figure 5c



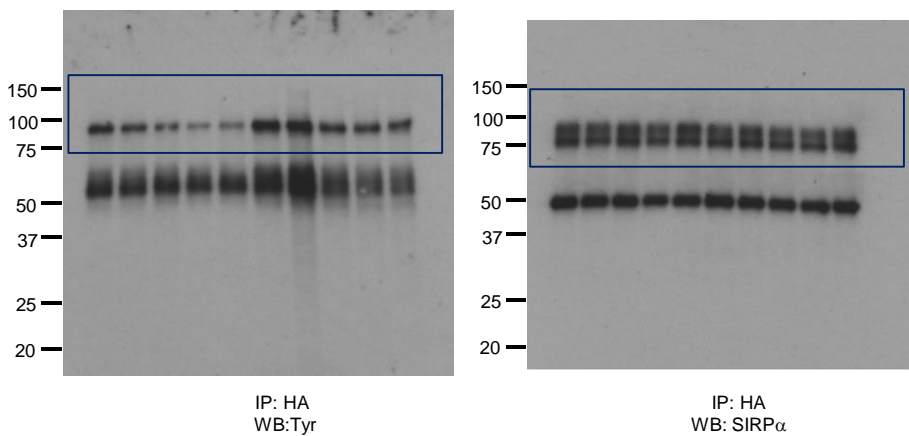
Extended Data Figure 10a



Extended Data Figure 10b

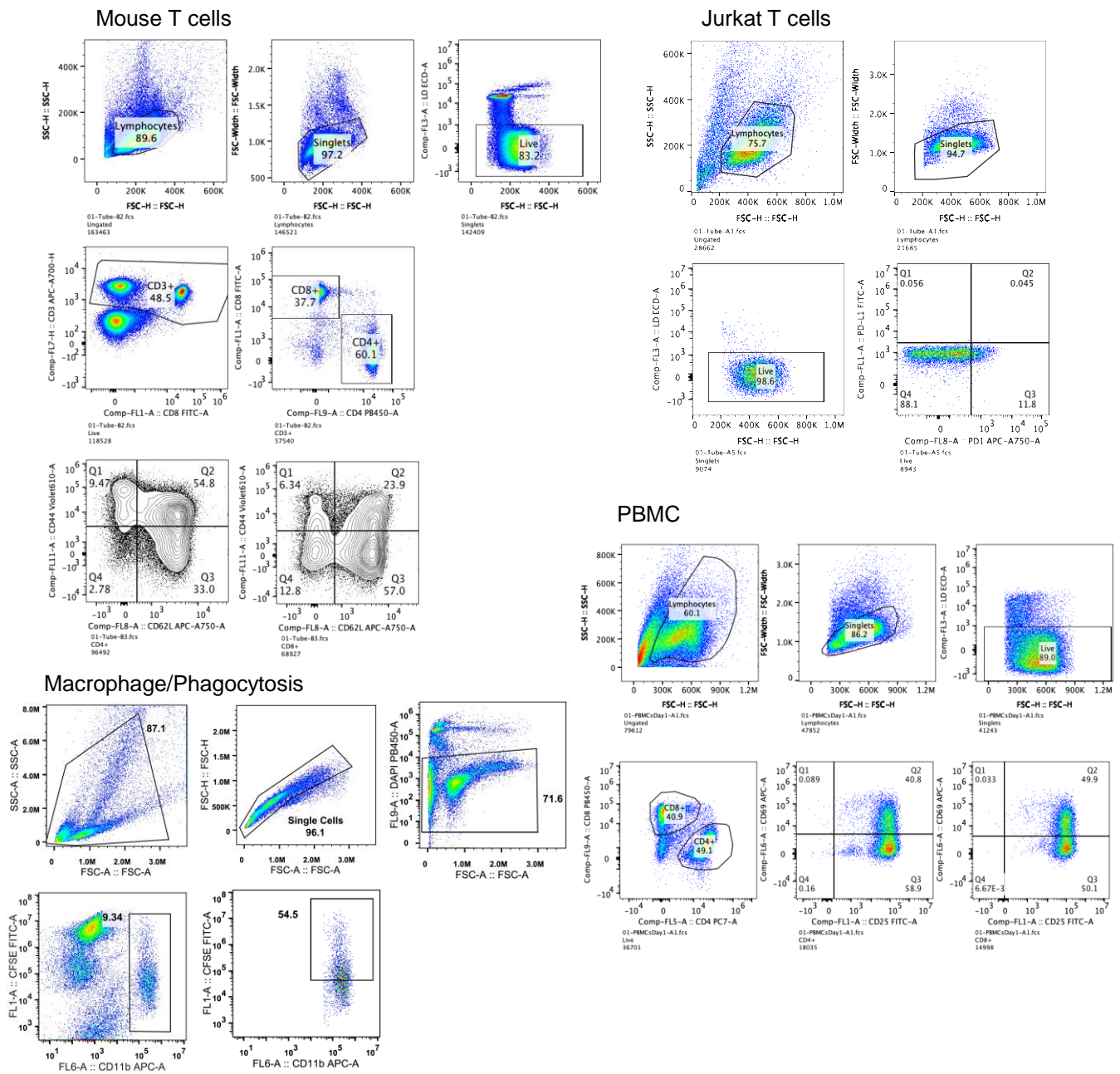


Extended Data Figure 10g



Supplementary Fig. 1. (Cont.) Raw western blot source images. Arrows indicate band of interest. Boxes indicate cropping for representative images. Corresponding Figures are indicated. (Continues next page.)

Supplementary Figure 2



Supplementary Fig. 2. Representative gating strategy for mouse T cells, Jurkat T cell line, human PBMCs and human macrophages, as indicated.