

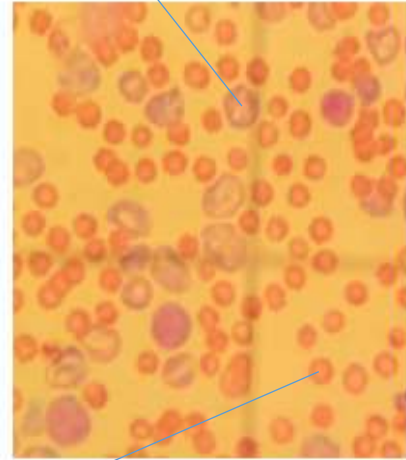
Photomicrographs of *in vivo* and molecular experiments

*Donor mice and subsequent parasitemia Giemsa stained photomicrograph

Mouse shivering out of malaria



Red blood cell infected with *P. berghei* ANKA



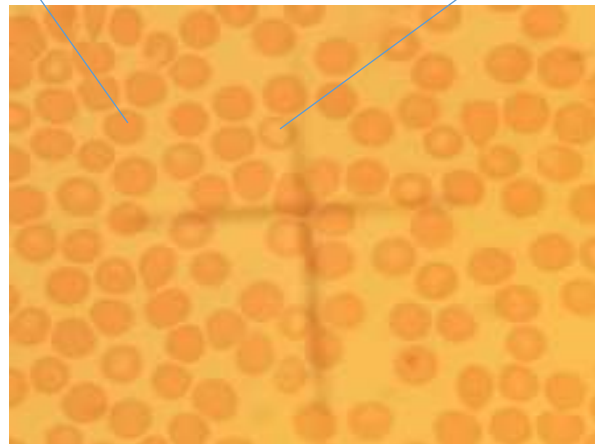
Normal red blood cell



* Parasite growth on day 1 in animals treated with Ethyl acetate extract

Normal red blood cell

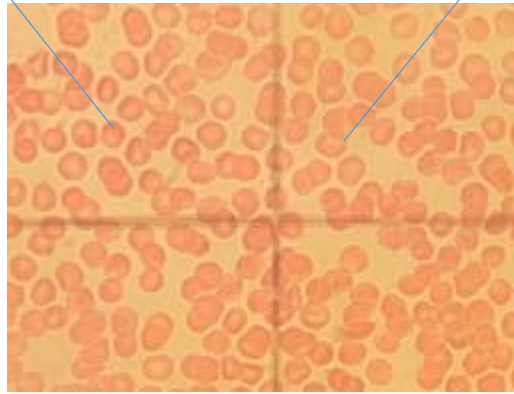
Red blood cell infected with *P. berghei*
ANKA



* Parasite growth on day 1 in animals treated with Methanol extract

Normal red blood cell

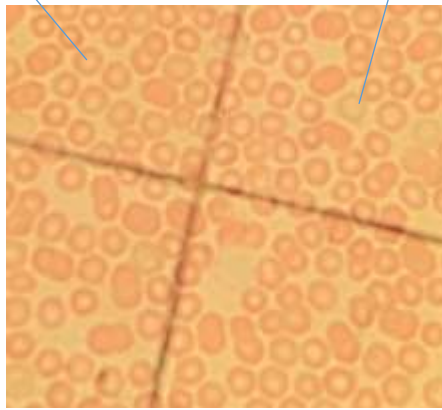
Red blood cell infected with *P. berghei*
ANKA



* Parasite clearance by Ethyl acetate extract

Normal red blood cell

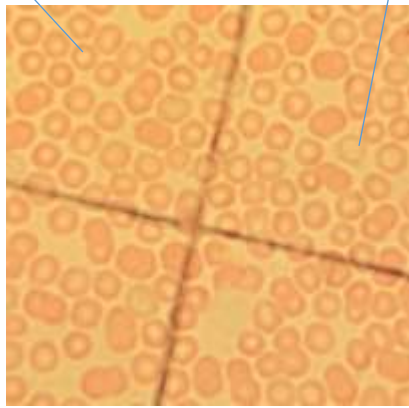
Red blood cell infected with *P. berghei*
ANKA



* Parasite clearance by Methanol extract

Normal red blood cell

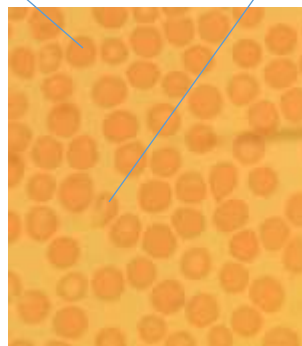
Red blood cell infected with *P. berghei*
ANKA



* Parasite clearance by Chloroquine

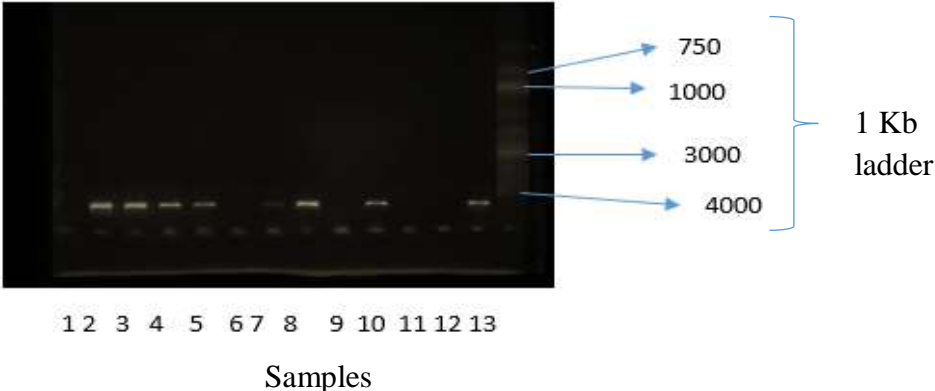
Normal red blood cell

Red blood cell infected with *P. berghei*
ANKA

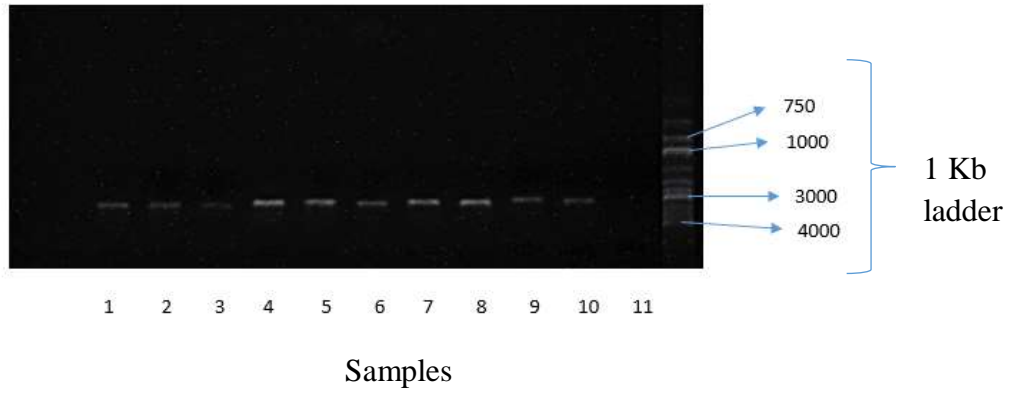


Amplification products with *Plasmodium berghei* ANKA

* PbMDR1 gel picture; 4002 bp



* PbCRT gel picture; 3077 bp



* Demonstration of liver infected with *P.berghei* ANKA versus normal liver



→ Liver infected with *P. berghei* ANKA

→ Normal liver