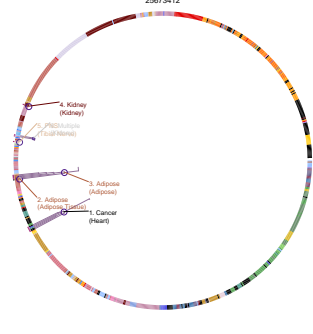
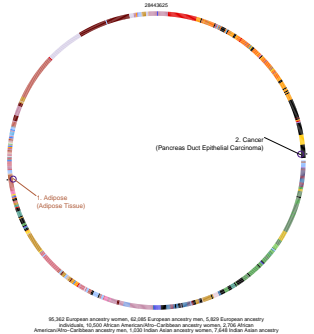


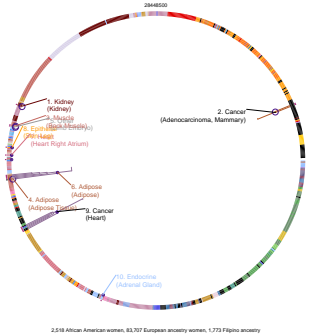
Waist-hip ratio
25673412



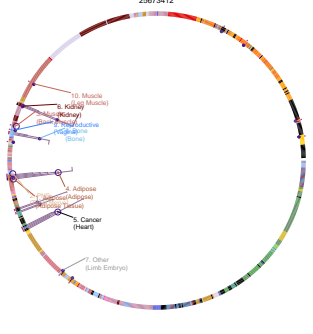
Waist-to-hip ratio adjusted for BMI (joint analysis main effects and smoking interaction)
264625



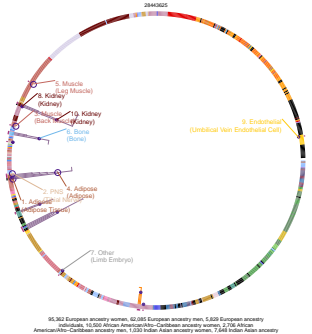
Waist-to-hip ratio adjusted for BMI (joint analysis for main effect and physical activity interaction)
264625



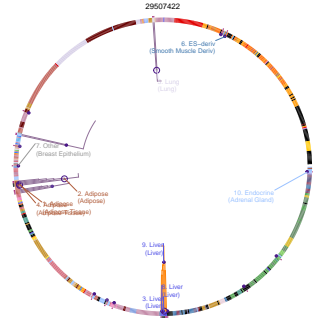
Waist-to-hip ratio adjusted for body mass index
25673412



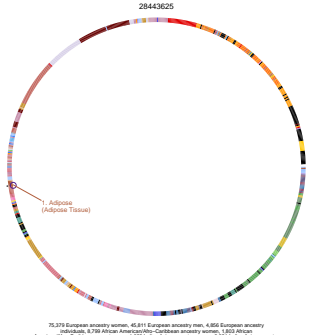
Waist-to-hip ratio adjusted for BMI (adjusted for smoking behaviour)
264625



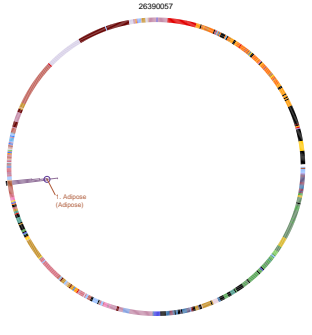
Triglycerides
29507422



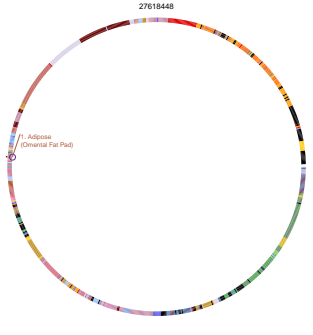
Waist-to-hip ratio adjusted for BMI in non-smokers
28443625



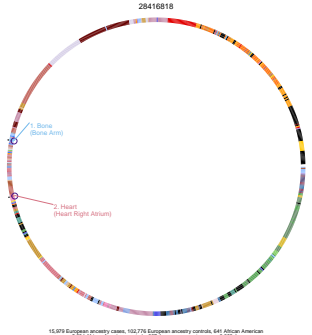
Pulse pressure
26390057



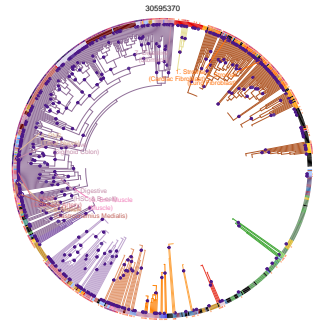
Systolic blood pressure
27618448



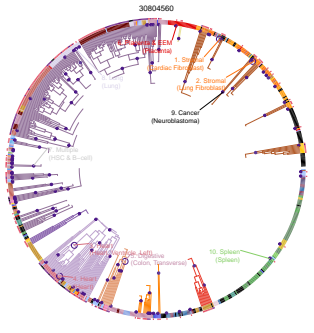
Atrial fibrillation
28416818



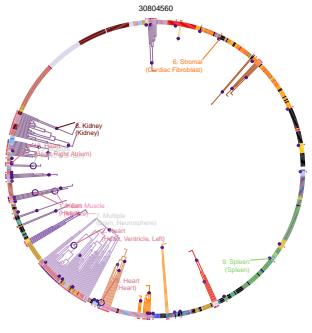
Lung function (FEV1/FVC)
30595370



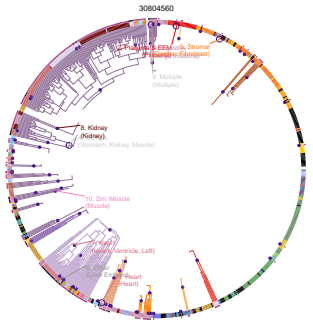
Lung function (FEV1/FVC)
30804560



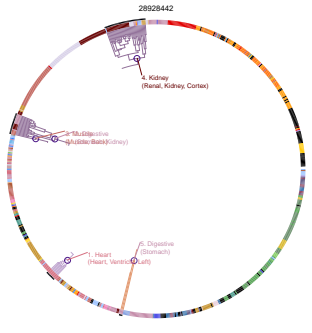
Peak expiratory flow
30804560



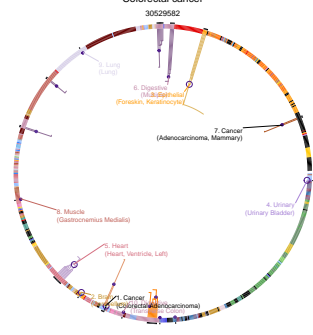
FEV1
30804560



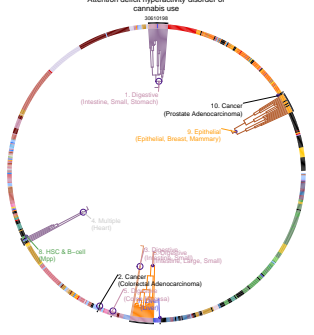
Urinary tract infection frequency
28284442



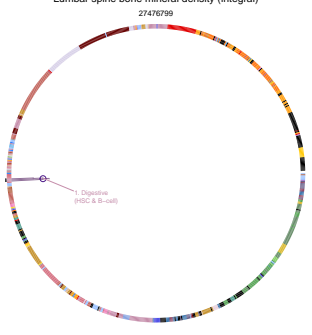
Colorectal cancer
30529582



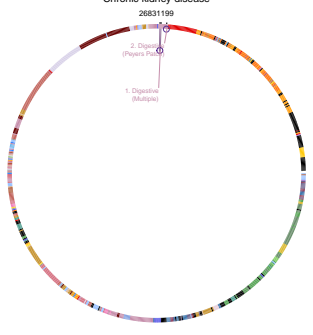
Attention deficit hyperactivity disorder or conduct disorder
321047 European ancestry individuals



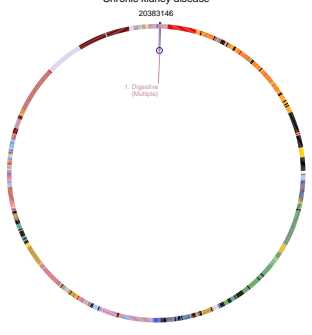
Lumbar spine bone mineral density (integral)
27476799



Chronic kidney disease
26831199



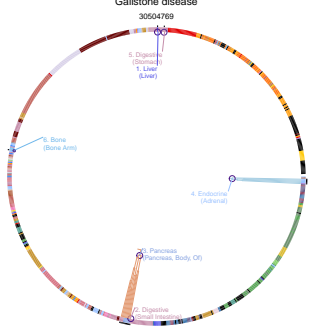
Chronic kidney disease
20383146



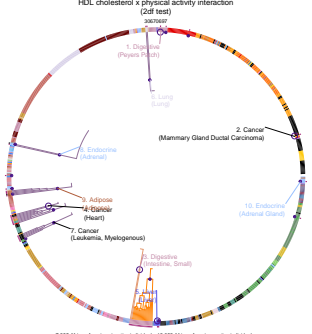
Diastolic blood pressure
27618448



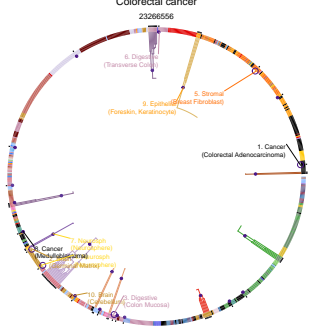
Gallstone disease
30504769



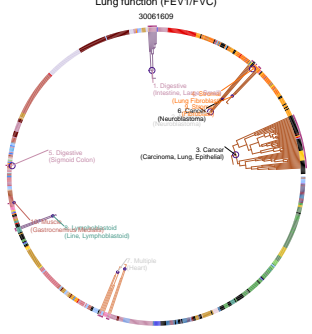
HDL cholesterol x physical activity interaction (2df test)
11880 European ancestry individuals



Colorectal cancer
23266556



Lung function (FEV1/FVC)
30061609

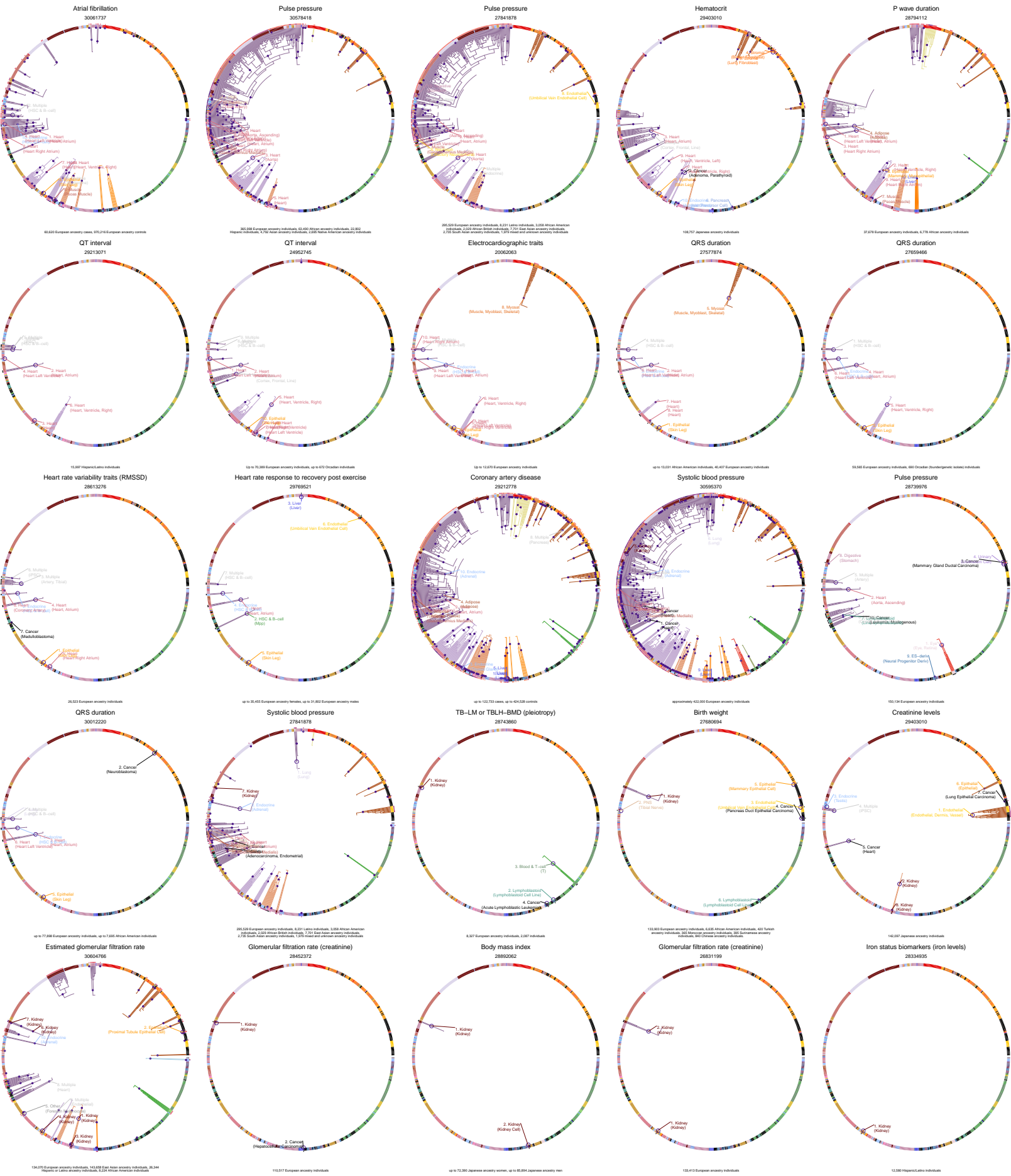


27,174 European ancestry cases, 726,838 European ancestry controls

7,395 African American ancestry individuals, 13,002 African American ancestry individuals, 3,725 Asian ancestry individuals, 1,025 European ancestry individuals, 22,282 European ancestry individuals, 6,338 European ancestry individuals, 2,042 Hispanic or Latin American ancestry individuals, 4,293 Hispanic or Latin American ancestry individuals

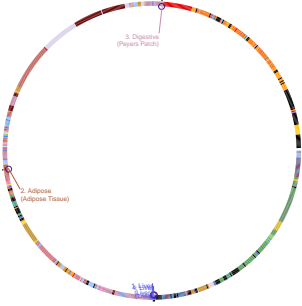
12,686 European ancestry colorectal cancer cases, 16,113 European ancestry controls

63,502 European ancestry individuals, 6,629 African individuals, 5,959 Korean ancestry individuals, 11,770 Hispanic individuals



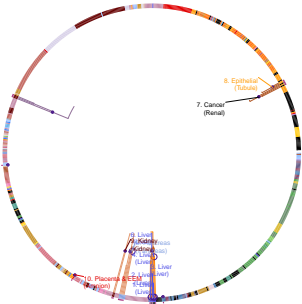
HDL cholesterol

20686565



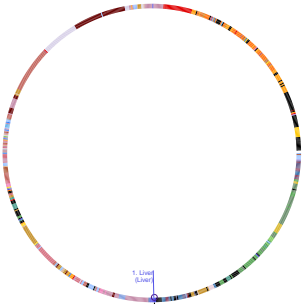
Lipid metabolism phenotypes

19936222



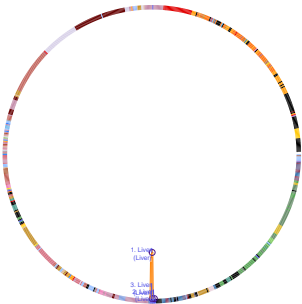
Triglycerides

20686565



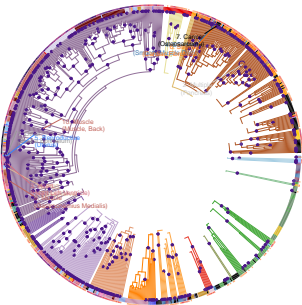
Metabolite levels (lipoprotein measures)

2705778



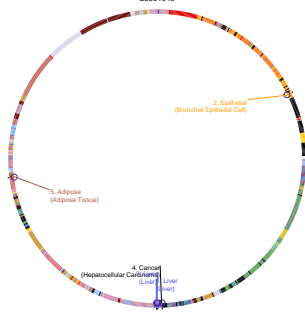
Heel bone mineral density

3048462



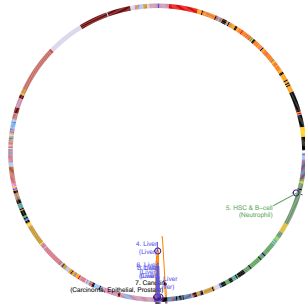
Cholesterol, total

25961943



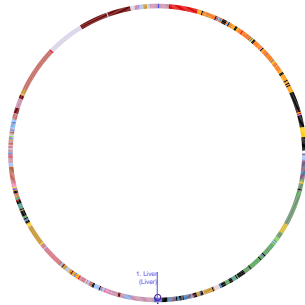
C-reactive protein levels

30388399



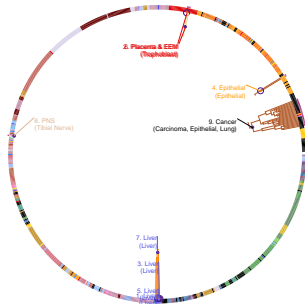
C-reactive protein levels

2130955



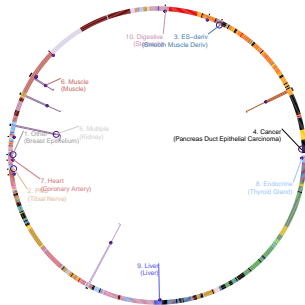
Liver enzyme levels (gamma-glutamyl transferase)

22001757



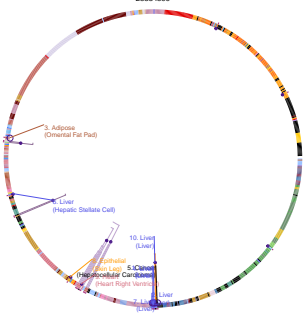
Intraocular pressure

29785010



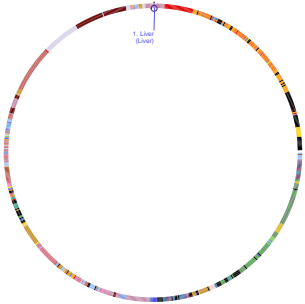
Total cholesterol levels

28334899



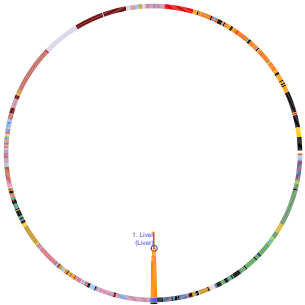
Alcohol consumption (drinks per week)

30643258



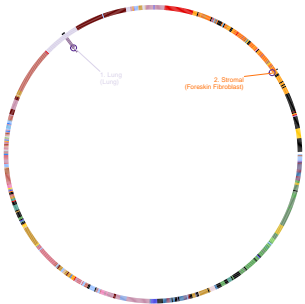
Coronary heart disease

21378990



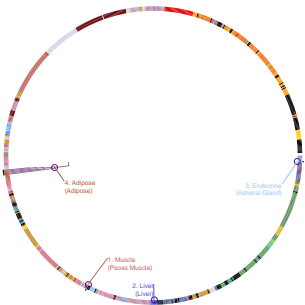
Insomnia symptoms (never/rarely vs. usually)

30804566



Coronary artery disease

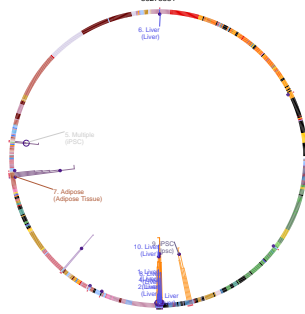
26343387



40,000 European ancestry cases, 501 African American cases, 758 Hispanic American cases, 13,500 South Asian ancestry cases, 1,802 African ancestry cases, 1,514 East Asian ancestry cases, 90,121 European ancestry controls, 2,779 African American controls, 2,337 Hispanic American controls, 10,942 South Asian ancestry controls, 461 unknown ancestry controls, 17,306 total ancestry controls

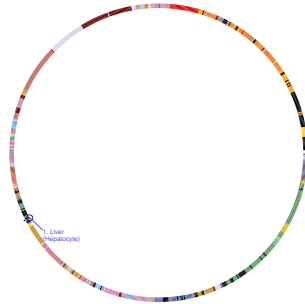
Total cholesterol levels

30275531



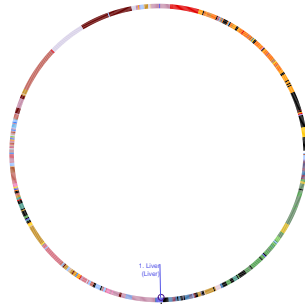
Hand grip strength

29691431



Triglycerides

24097058



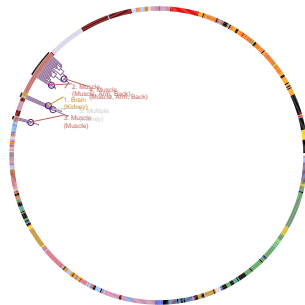
Male-pattern baldness

29146897



Urinary albumin-to-creatinine ratio in non-diabetics

26631737

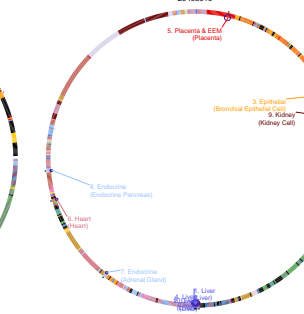


Urinary albumin-to-creatinine ratio in non-diabetics

up to 46,651 European ancestry individuals

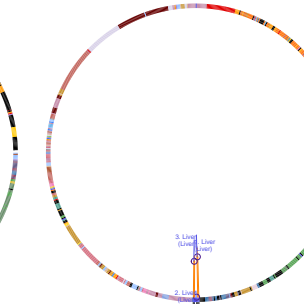
Low density lipoprotein cholesterol levels

29403010



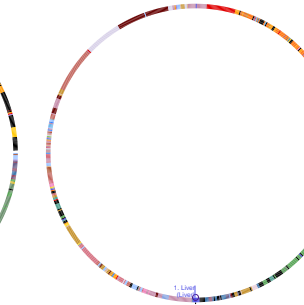
Aspartate aminotransferase levels

29403010



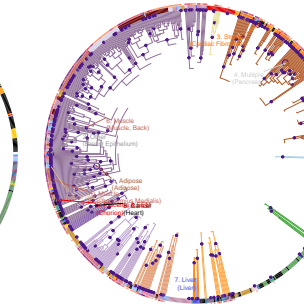
Advanced age-related macular degeneration

26691988



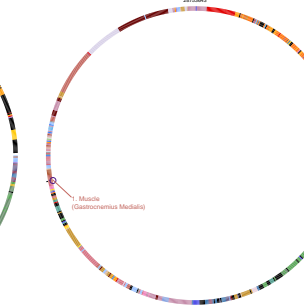
Heel bone mineral density

30953370



Lipoprotein phospholipase A2 activity in cardiovascular disease

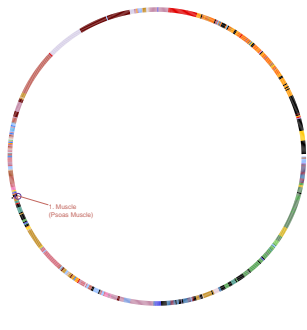
30953370



Lipoprotein phospholipase A2 activity in cardiovascular disease

22,156 European, Asian, African, Indian, Native American, Pacific Islander and other ancestry

Invasive epithelial ovarian cancer
28346442



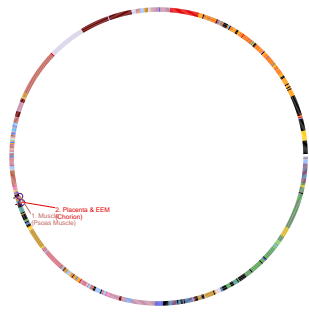
Epithelial ovarian cancer
28346442



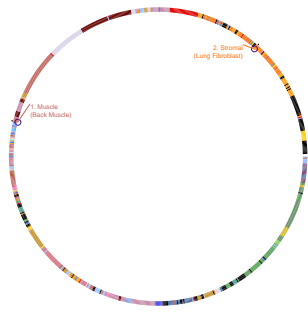
High-grade serous ovarian cancer
28346442



Serous invasive ovarian cancer
28346442



Central corneal thickness
29760442



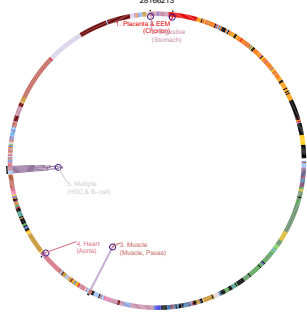
Corneal structure
23291589



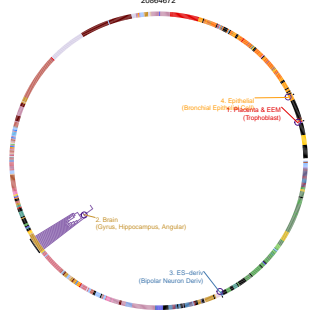
Pneumonia
28928442



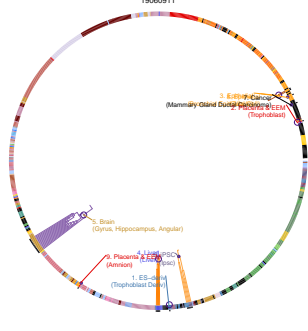
Lung function (FEV1/FVC)
29166213



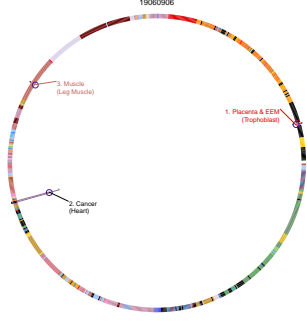
LDL cholesterol
20864672



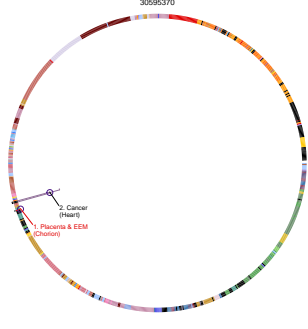
Cholesterol, total
19060911



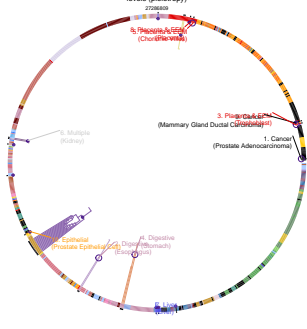
Triglycerides
15005006



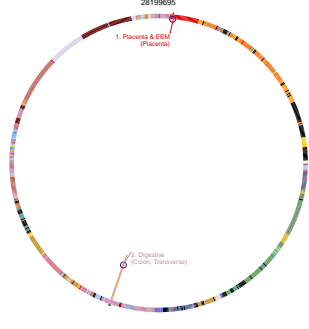
Smoking status
30595370



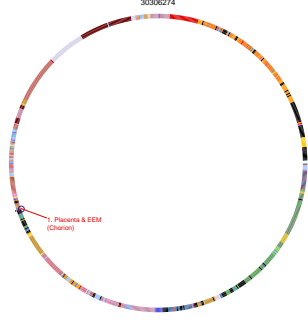
C-reactive protein levels or LDL-cholesterol levels (heterozygous)
272600



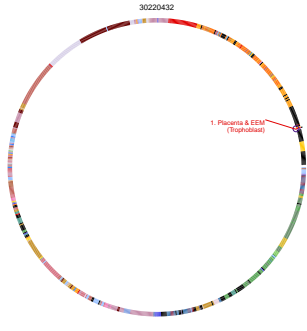
Perceived unattractiveness to mosquitoes
28199695



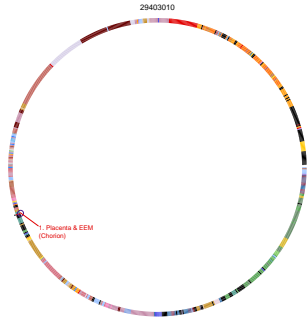
Refractive astigmatism
30306274



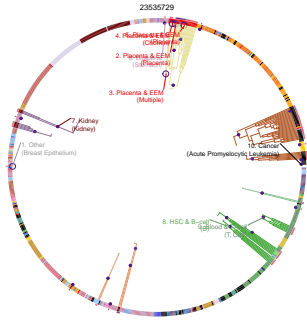
Urinary albumin excretion (no hypertensive medication)
30220432



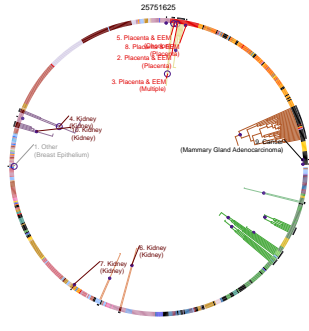
Prothrombin time
29403010



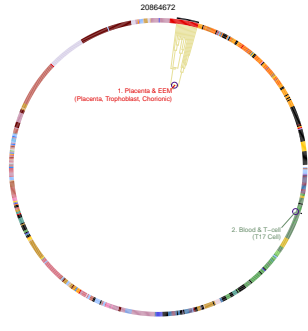
Breast cancer
23535729



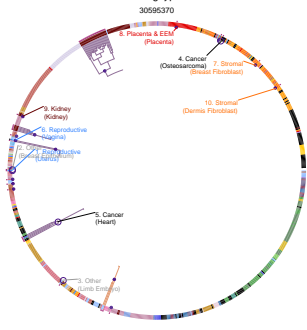
Breast cancer
25751625



HDL cholesterol
20864672



Balding type 1
30595370



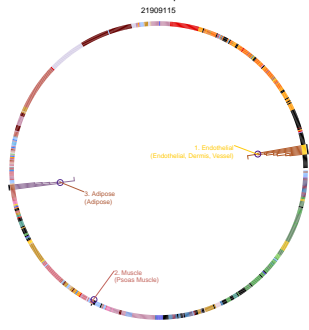
Lobe attachment (rate-scored or self-reported)
29198719



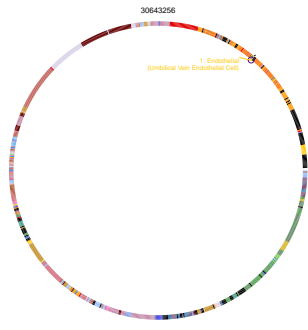
Smoking cessation (MTAG)
30643251



Diastolic blood pressure
21909115



Positive affect
30643256



approximately 208,000 European ancestry individuals

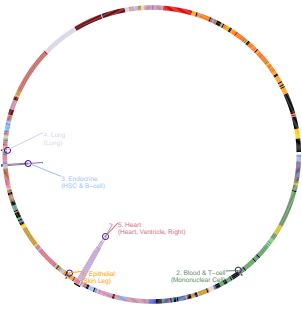
65,741 European ancestry individuals, 1,562 Hispanic individuals, 2,857 Han Chinese ancestry individuals

up to 653,102 European ancestry individuals

69,392 European ancestry individuals

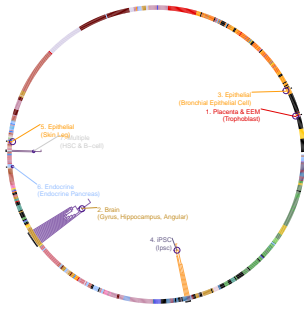
410,683 European ancestry individuals

Type 2 diabetes
30054458



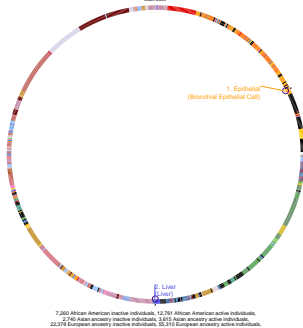
61,714 European ancestry cases, 1,175 Pakistani ancestry cases, 283,962 European ancestry controls, 2,475 Pakistani ancestry controls

LDL cholesterol
19060911



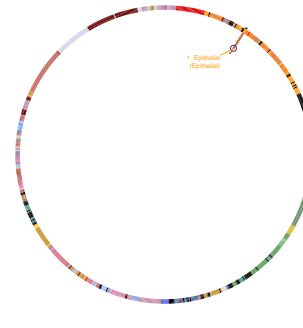
17,085 European ancestry individuals, 714 Icelandic individuals

LDL cholesterol x physical activity interaction
(all test)
2279727



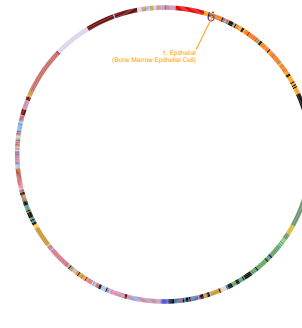
7,260 African American inactive individuals, 12,761 African American active individuals, 22,172 African American inactive individuals, 24,725 African American active individuals, 2,763 Hispanic or Latin American inactive individuals, 5,481 Hispanic or Latin American active individuals

Renal function-related traits (BUN)
2279727



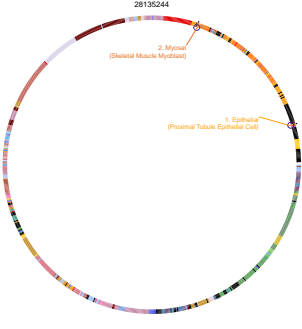
26,717 East Asian ancestry individuals

Blood pressure
21909110



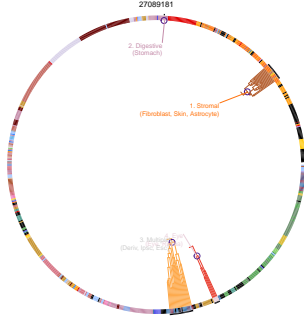
74,064 European ancestry individuals

Systolic blood pressure
28135244



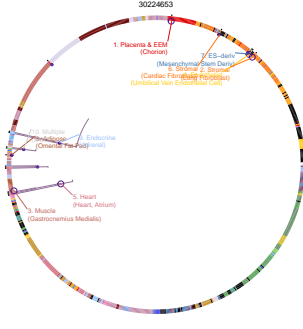
143,882 European ancestry individuals

Life satisfaction
27089181



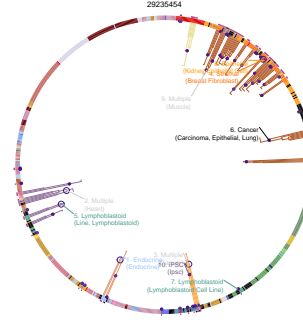
162,205 European ancestry individuals

Pulse pressure
30224653



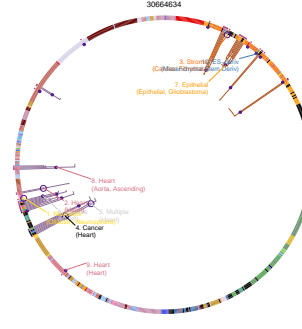
727,401 European ancestry individuals

Intraocular pressure
29235454



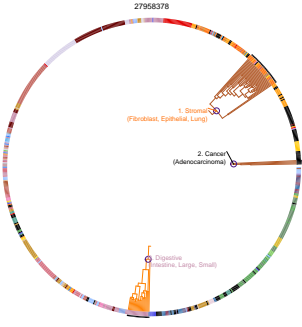
56,819 European ancestry individuals, 5,746 Hispanic/Latino individuals, 6,119 East Asian ancestry individuals, 2,079 African ancestry individuals

Body fat distribution (leg fat ratio)
30664634



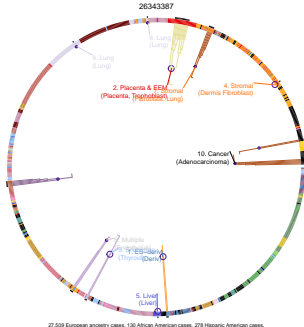
52,035 British ancestry males, 61,122 British ancestry females

QRS interval (sulfonurea treatment interaction)
27956371



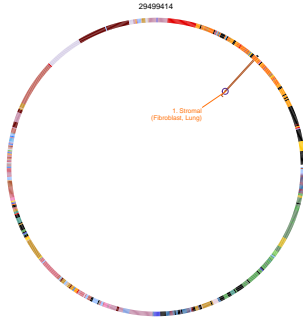
2,095 European ancestry unpaired individuals, 4,307 European ancestry unpaired individuals, 1,127 African American unpaired individuals, 10,744 African American unpaired individuals, 14,102 European ancestry unpaired individuals, 14,102 African American unpaired individuals, 7,709 East Asian ancestry unpaired individuals

Myocardial infarction
26343987



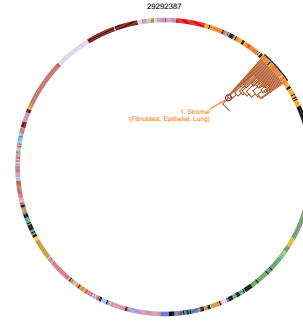
27,529 European ancestry cases, 120 African American cases, 278 Hispanic American cases, 10,207 South Asian ancestry cases, 288 Latin American cases, 1,487 East Asian ancestry cases, 10,115 European ancestry controls, 2,776 African ancestry controls, 1,377 Hispanic American ancestry controls, 14,102 African American ancestry controls, 7,709 East Asian ancestry controls

Lumbar spine bone mineral density
2949814



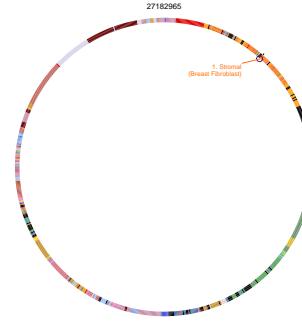
up to 4,882 European ancestry individuals, up to 1,120 Han Chinese ancestry individuals, up to 6,046 African ancestry individuals, up to 9,169 Hispanic ancestry, up to 68 European ancestry non-genotype imputed individuals, 35,524 European ancestry non-genotype imputed individuals

Neuroticism
29292987



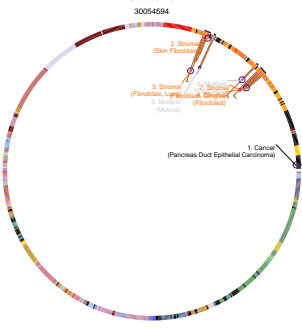
168,105 European ancestry individuals

Myopia
27182965



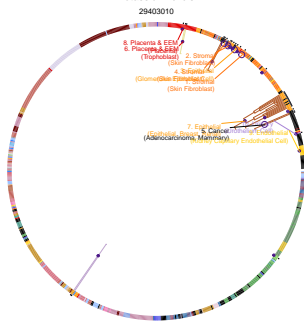
108,008 European ancestry cases, 85,727 European ancestry controls

Glaucoma
30054594



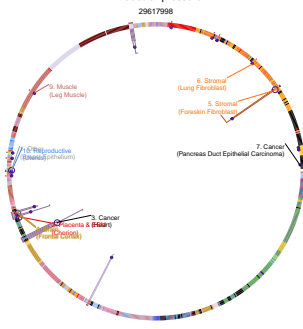
11,018 European ancestry cases, 136,068 European ancestry controls

Potassium levels
29403010



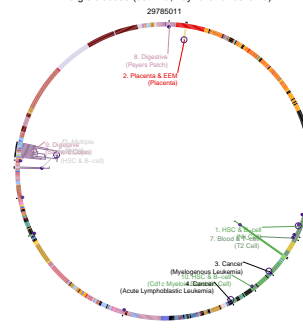
132,228 European ancestry individuals

Intraocular pressure
29617998



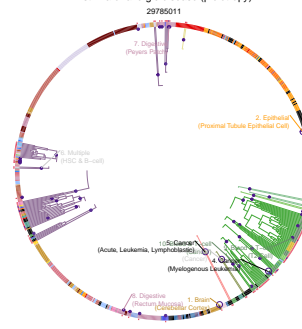
115,466 European ancestry individuals

Allergic disease (asthma, hay fever or eczema)
29785011



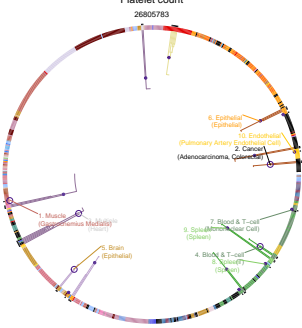
25,685 European ancestry allergic disease cases, 74,768 European ancestry controls

Asthma or allergic disease (pleiotropy)
29785011



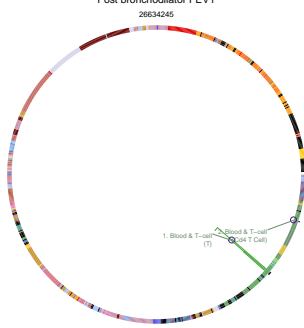
14,085 European asthma cases, 25,685 European ancestry allergic disease cases, 74,768 European ancestry controls

Platelet count
26805783



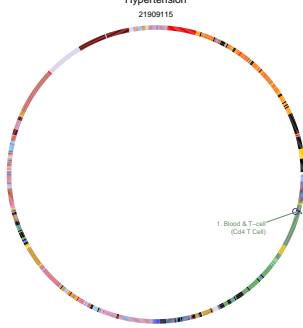
12,481 Hispanic/Latin American individuals

Post bronchodilator FEV1
26634245



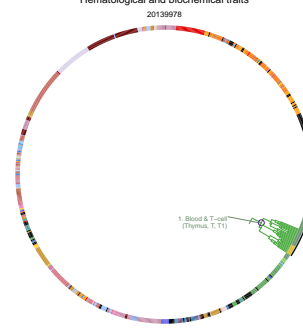
16,094 European ancestry current and former smoker individuals, 1,260 African American current and former smoker individuals, 174 current and former smoker individuals

Hypertension
21909115



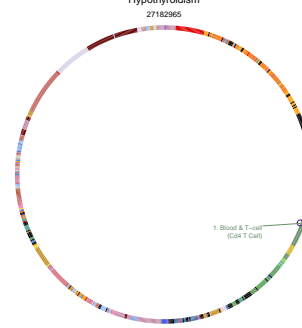
63,365 European ancestry individuals

Hematological and biochemical traits
20139978



Up to 14,402 Japanese individuals

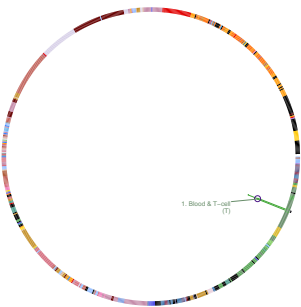
Hypothyroidism
27182965



17,558 European ancestry cases, 117,683 European ancestry controls

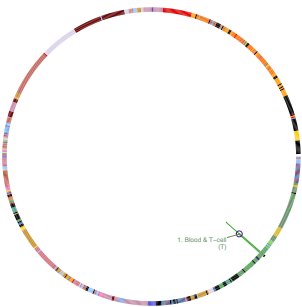
Measles

28928442



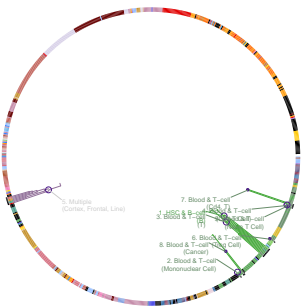
Lymphocyte counts

29403010



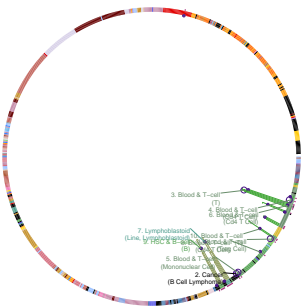
Menopause (age at onset)

26414677



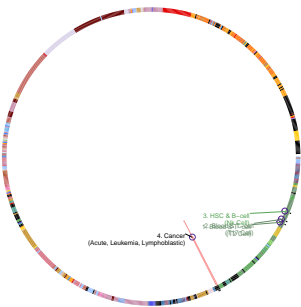
Rheumatoid arthritis

23143596



Hip shape (DXA scan)

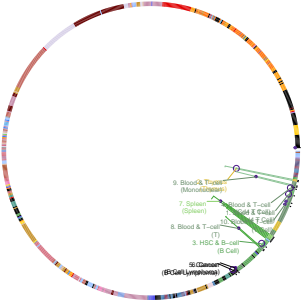
30320955



36,219 European ancestry cases, 47,276 European ancestry controls

Celiac disease

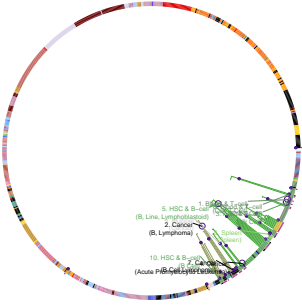
22057235



62,076 Japanese ancestry individuals

Rheumatoid arthritis

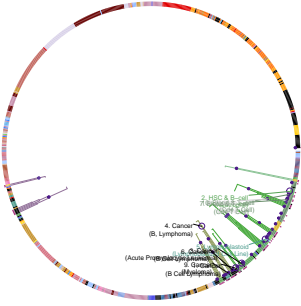
24390342



up to 69,626 European ancestry women

Rheumatoid arthritis (ACPA-positive)

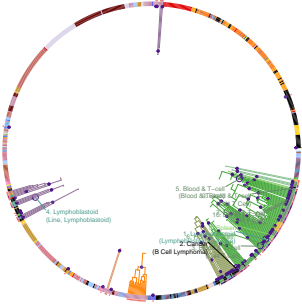
24532676



up to 13,828 European ancestry cases, up to 33,740 European ancestry controls

Systemic lupus erythematosus

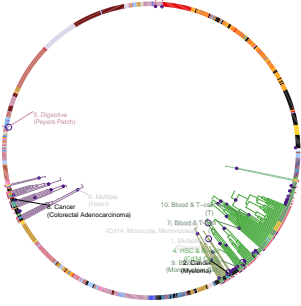
28714469



10,217 European ancestry individuals, 5,717 individuals

Mosquito bite size

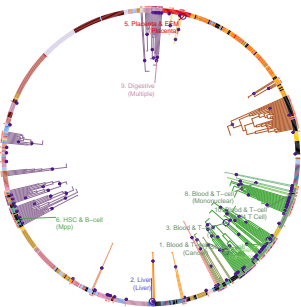
28199695



11,812 European ancestry cases, 23 Indian ancestry cases, 11,807 European ancestry controls, 20 Indian ancestry controls

Inflammatory bowel disease

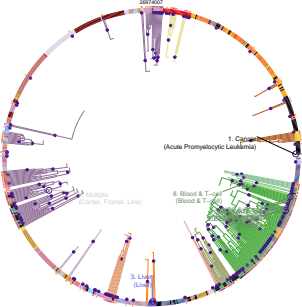
20057509



up to 14,261 European ancestry cases, up to 42,022 European ancestry controls, up to 1,875 Indian ancestry cases, up to 11,562 Indian ancestry controls

Chronic inflammatory diseases (ankylosing spondylitis, Crohn's disease, psoriasis, primary sclerosing cholangitis, ulcerative colitis) (genetically shared)

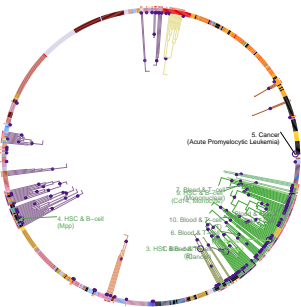
26152919



2,234 Korean ancestry cases, 7,065 Korean ancestry controls, 12,286 European ancestry cases, 32,523 European ancestry controls

Inflammatory bowel disease

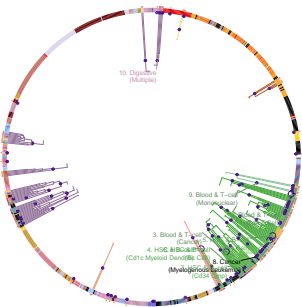
26152919



4,746 European ancestry cases, 11,516 European ancestry controls, 2,270 African American cases, 3,432 African American controls, 1,072 Hispanic cases, 2,016 Hispanic controls

Crohn's disease

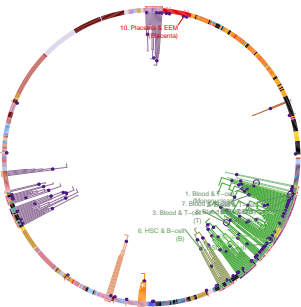
28037509



64,724 European ancestry individuals

Inflammatory bowel disease

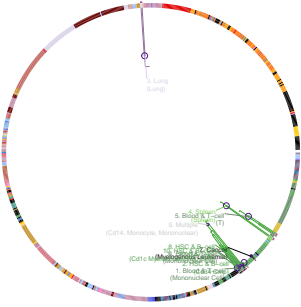
23123233



25,042 European and unknown ancestry cases, 34,915 European and unknown ancestry controls

Alzheimer's disease (late onset)

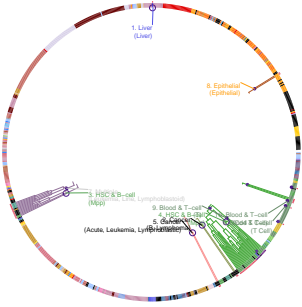
30617256



9,726 European ancestry ankylosing spondylitis cases, 10,085 European ancestry Crohn's disease cases, 6,020 Korean ancestry Crohn's disease cases, 3,432 European ancestry primary sclerosing cholangitis cases, 10,072 European ancestry Crohn's disease cases, 10,072 European ancestry Crohn's disease cases, 10,072 European ancestry Crohn's disease cases

Mean corpuscular hemoglobin concentration

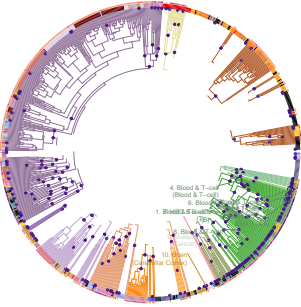
28017375



12,882 European ancestry cases, 21,770 European ancestry controls

Lymphocyte counts

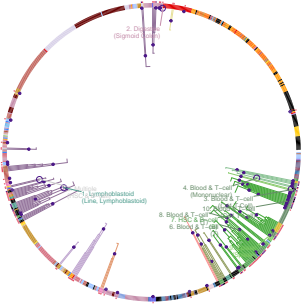
27863252



12,114 European and unknown ancestry cases, 26,072 European and unknown ancestry controls

Respiratory diseases

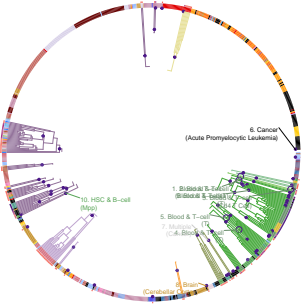
30595370



12,824 European ancestry cases, 21,442 European ancestry controls

Lymphocyte percentage of white cells

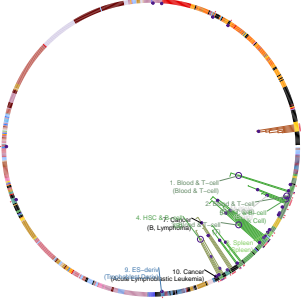
27863252



14,387 European ancestry cases, 55,058 European ancestry controls

Autoimmune traits

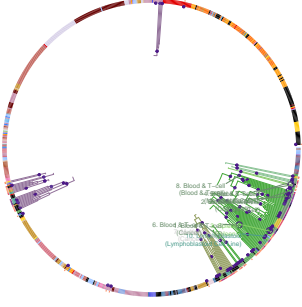
30595370



up to 21,020 European ancestry individuals, up to 3,821 African American individuals, up to 11,642 East Asian individuals

Hypothyroidism

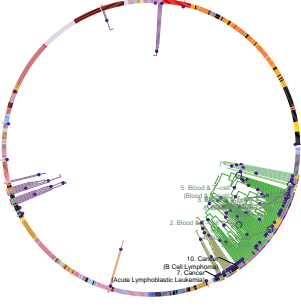
30595370



171,643 European ancestry individuals

Multiple sclerosis

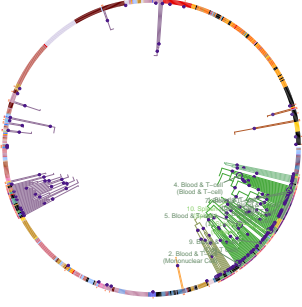
24076602



approximately 450,000 European ancestry individuals

Eczema

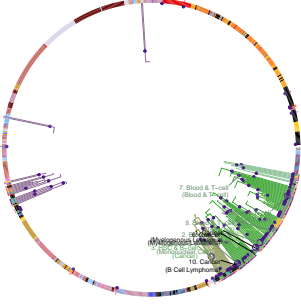
30595370



171,748 European ancestry individuals

Allergic disease (asthma, hay fever or eczema)

29083406



approximately 450,000 European ancestry individuals

approximately 450,000 European ancestry individuals

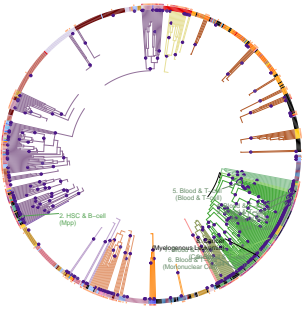
14,498 European ancestry cases, 34,091 European ancestry controls

approximately 450,000 European ancestry individuals

183,128 European ancestry cases, 183,708 European ancestry controls

Eosinophil counts

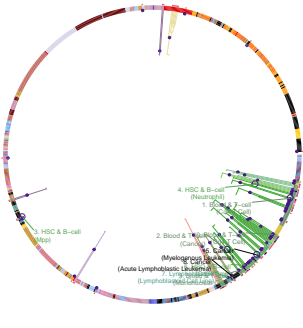
30595370



approximately 44,000 European ancestry individuals

Neutrophil percentage of granulocytes

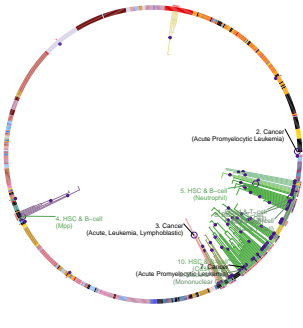
27863252



170,472 European ancestry individuals

Eosinophil percentage of white cells

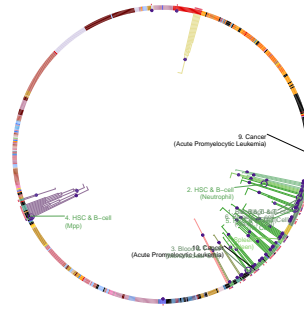
27863252



173,378 European ancestry individuals

Eosinophil percentage of granulocytes

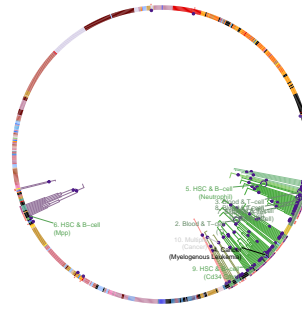
27863252



170,536 European ancestry individuals

Sum eosinophil basophil counts

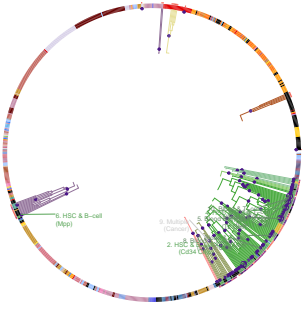
27863252



171,771 European ancestry individuals

Eosinophil counts

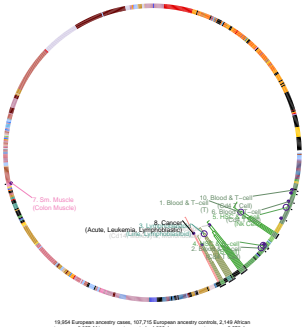
27863252



132,375 European ancestry individuals

Asthma

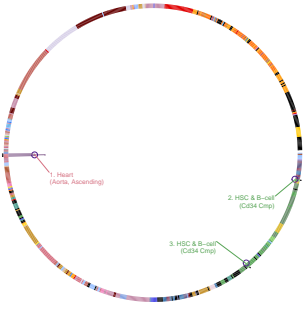
29273806



16,564 European ancestry cases, 107,716 European ancestry controls, 2,149 African ancestry cases, 145,628 African ancestry controls, 1,232 Hispanic ancestry cases, 675 Hispanic ancestry controls, 10,200 European ancestry controls

Height

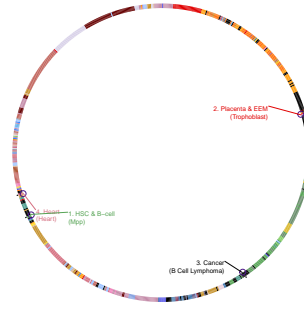
23563607



8,307 European ancestry tall individuals, 6,000 European ancestry short individuals

Triglyceride levels

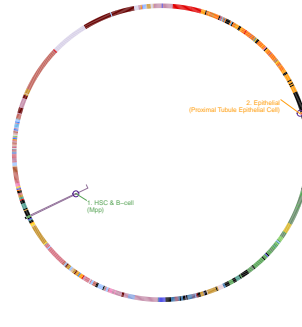
28334899



26,140 East Asian ancestry individuals, 171,861 European ancestry individuals

Tonsillectomy

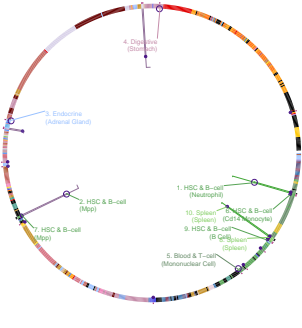
27182965



60,008 European ancestry cases, 133,233 European ancestry controls

Granulocyte count

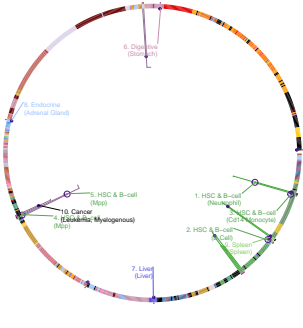
27863252



163,832 European ancestry individuals

Sum basophil neutrophil counts

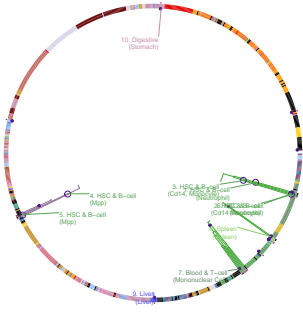
27863252



170,143 European ancestry individuals

Neutrophil count

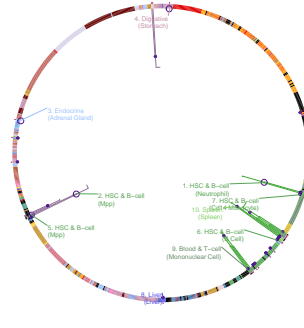
27863252



170,702 European ancestry individuals

Sum neutrophil eosinophil counts

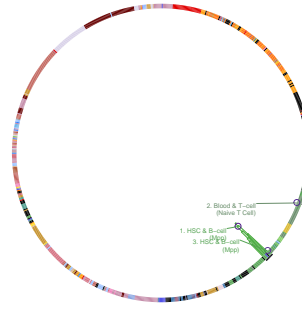
27863252



170,384 European ancestry individuals

Menopause (age at onset)

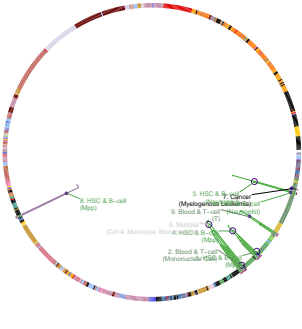
22267201



60,008 European ancestry cases, 133,233 European ancestry controls

Family history of Alzheimer's disease

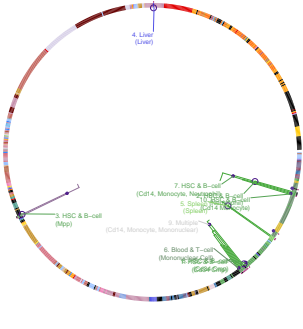
30617256



47,793 European ancestry cases, 338,320 European ancestry controls

Basophil percentage of granulocytes

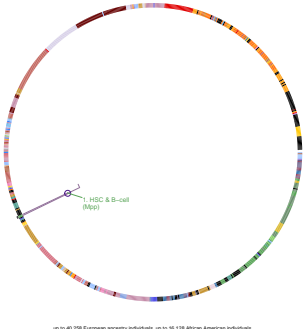
27863252



170,223 European ancestry individuals

Red blood cell count

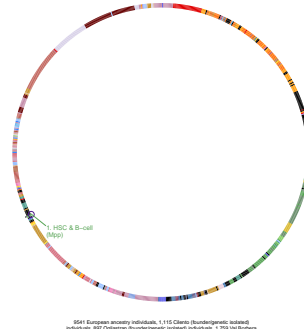
28017375



46,1228 European ancestry individuals, 46,119,128 African American individuals, 46,119,128 East Asian individuals

Vascular endothelial growth factor levels

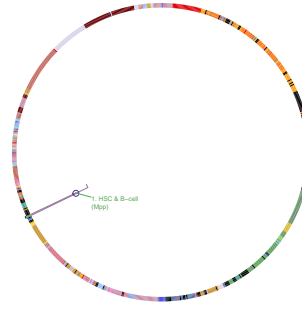
26910538



5541 European ancestry individuals, 1,115 Chinese (Han) ancestry individuals, 587 Japanese (Shiga) ancestry individuals, 1759 US-born individuals, 1759 US-born individuals

Triglycerides

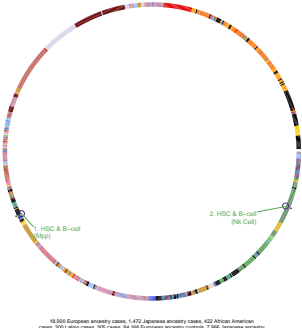
25961943



46,119,128 European ancestry individuals

Atopic dermatitis

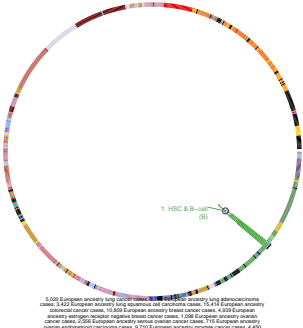
26482879



18,300 European ancestry cases, 1,477 Japanese ancestry cases, 422 African American cases, 180,000 European ancestry controls, 100,000 African American ancestry controls, 200,000 European ancestry controls, 100,000 African American ancestry controls, 100,000 European ancestry controls, 100,000 African American ancestry controls

Cancer (pleiotropy)

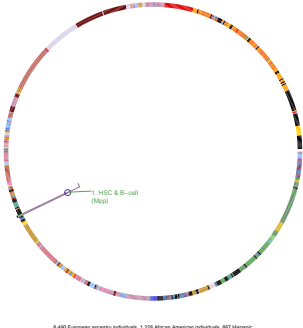
27197191



5,000 European ancestry tall individuals, 5,000 European ancestry short individuals, 5,000 European ancestry tall individuals, 5,000 European ancestry short individuals, 5,000 European ancestry tall individuals, 5,000 European ancestry short individuals, 5,000 European ancestry tall individuals, 5,000 European ancestry short individuals, 5,000 European ancestry tall individuals, 5,000 European ancestry short individuals

Loneliness (linear analysis)

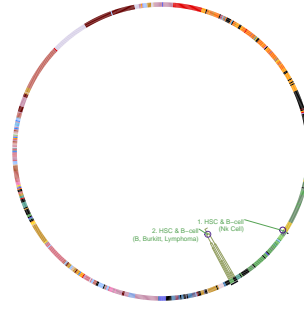
27629369



8,490 European ancestry individuals, 1,208 African American individuals, 807 Hispanic American individuals, 175 individuals

Shingles

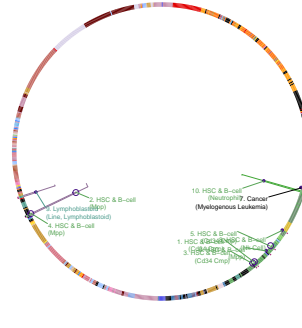
28928442



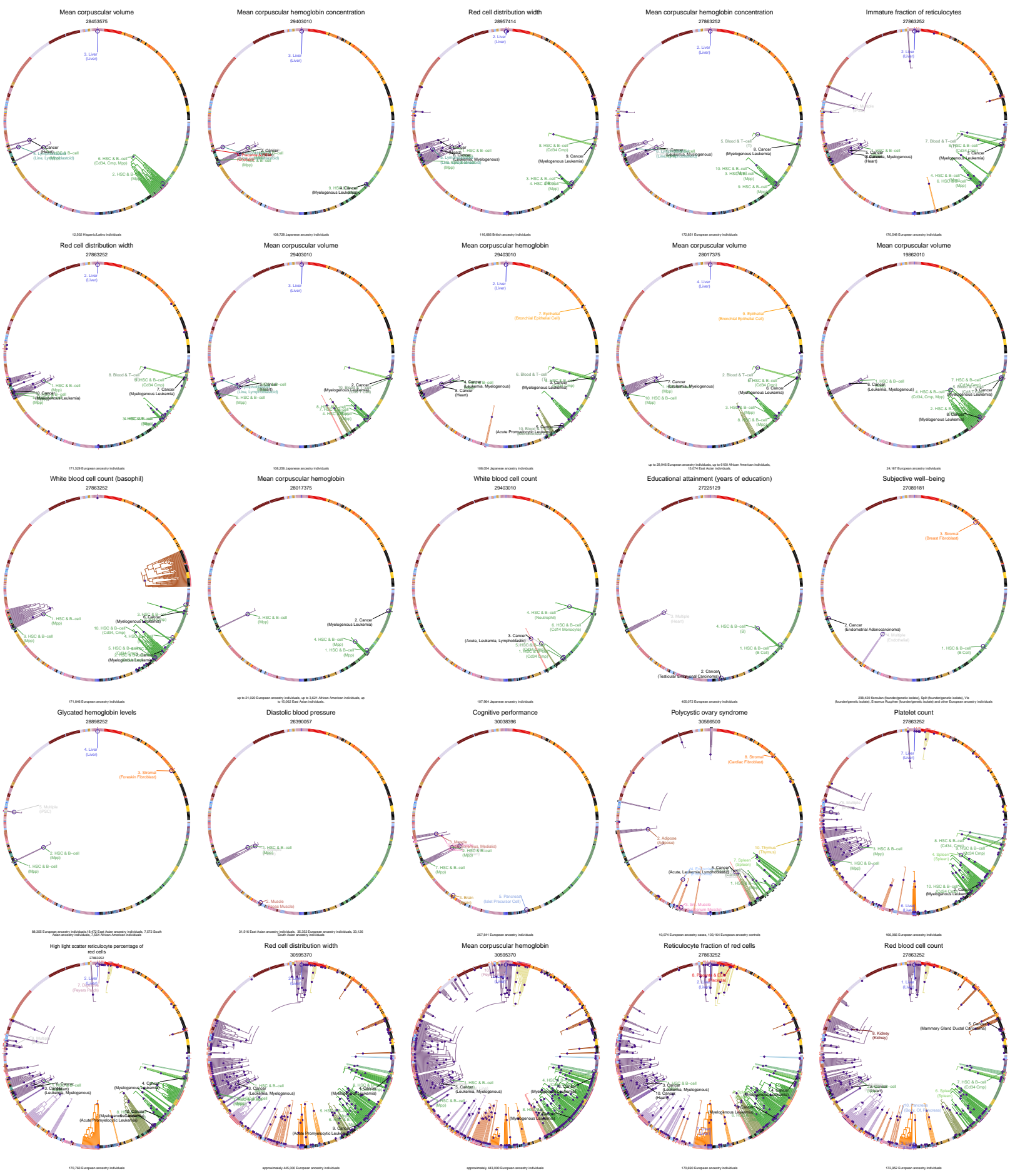
16,711 European ancestry cases, 118,152 European ancestry controls

Basophil percentage of white cells

27863252

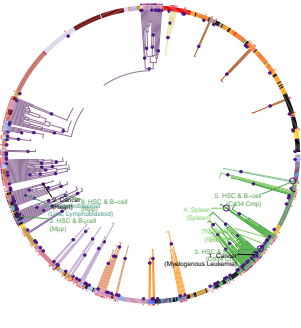


171,086 European ancestry individuals



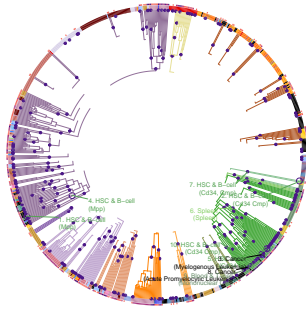
Plateletcrit

27863252



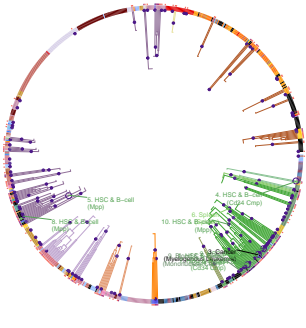
Mean platelet volume

27863252



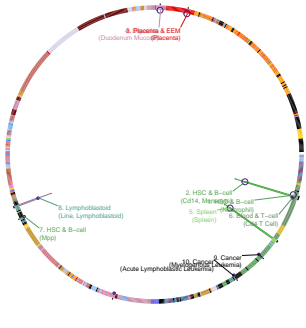
Platelet distribution width

27863252



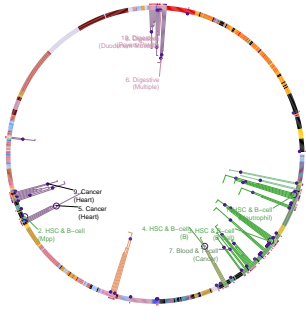
Ankylosing spondylitis

23749187



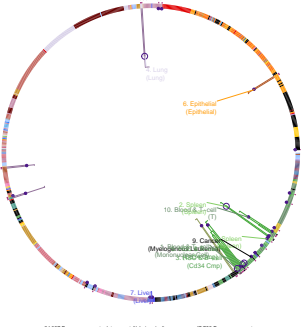
Ulcerative colitis

28067908



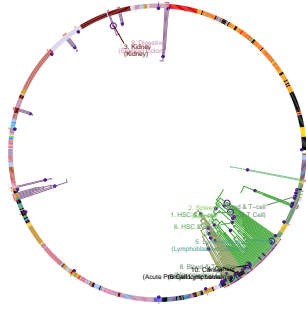
Alzheimer's disease or family history of Alzheimer's disease

29403010



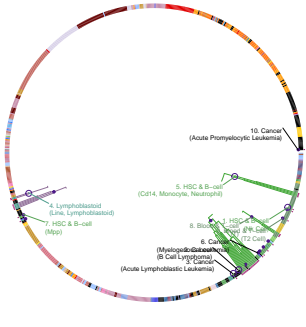
Albumin-globulin ratio

29403010



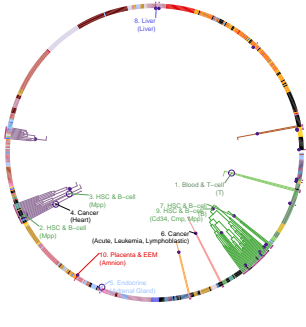
Self-reported allergy

23817569



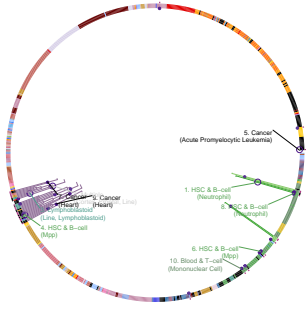
Red blood cell count

29403010



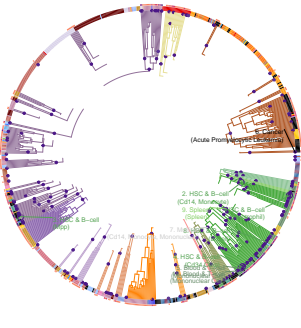
Neutrophil percentage of white cells

27863252



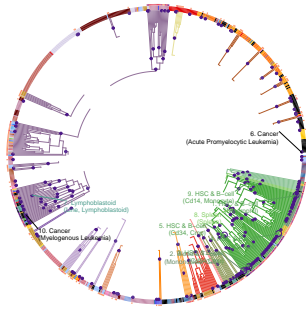
Monocyte count

27863252



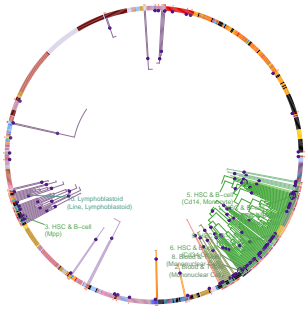
Monocyte percentage of white cells

27863252



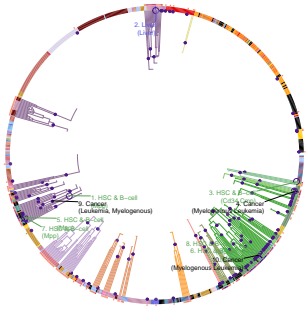
Granulocyte percentage of myeloid white cells

27863252



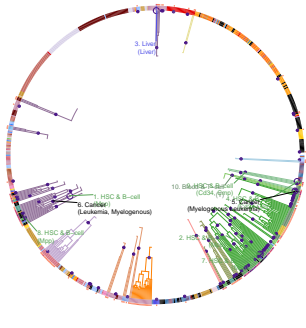
Mean corpuscular volume

27863252



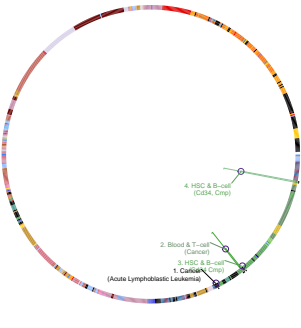
Mean corpuscular hemoglobin

27863252



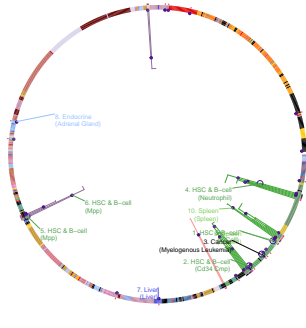
White blood cell count (basophil)

29403010



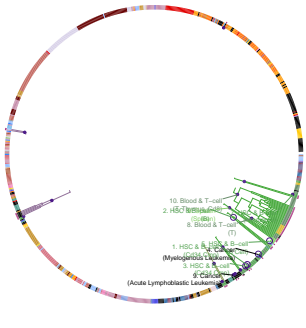
Myeloid white cell count

27863252



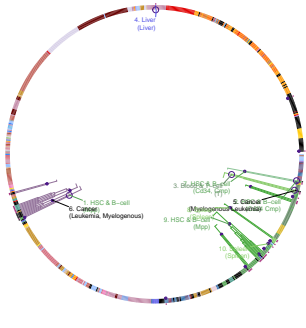
Itch intensity from mosquito bite

28199895



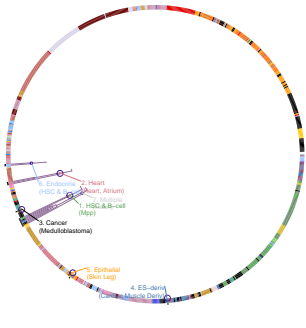
Red blood cell traits

23225217



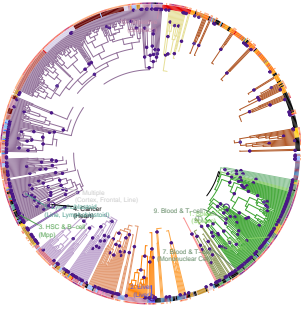
Heart rate variability traits (SDNN)

28613276



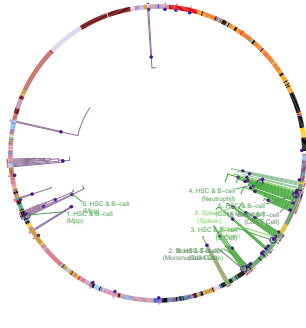
White blood cell count

30595370



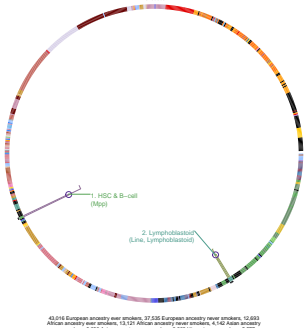
White blood cell count

27863252



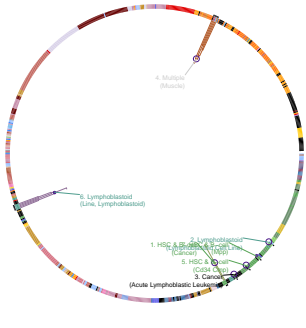
Diastolic blood pressure x smoking status (ever vs never) interaction (2d test)

28199895



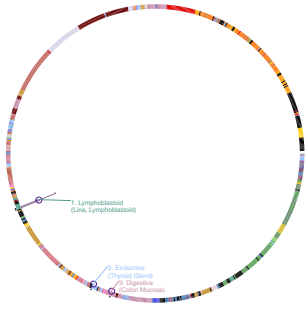
Allergic rhinitis

30013184



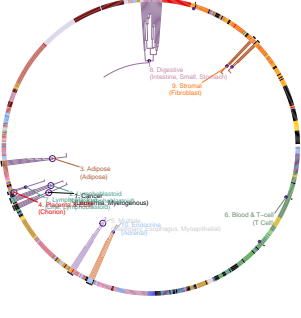
Cognitive ability

29186694



Psoriasis

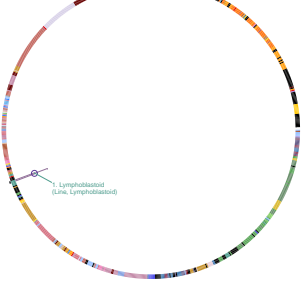
23143694



10,588 European ancestry cases, 22,808 European ancestry controls

Iron status biomarkers (ferritin levels)

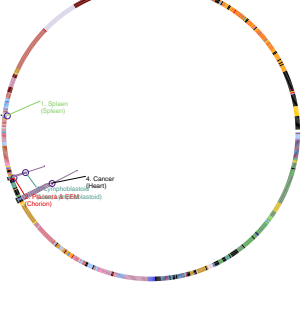
28334935



13,375 Hispanic/Latino individuals

Itch intensity from mosquito bite adjusted by bite size

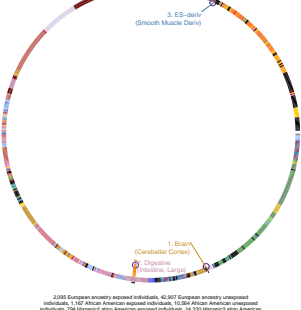
2118888



41,305 European ancestry men and 43,369 European ancestry women

QT interval (sulfonylurea treatment interaction)

27958378



2,008 European ancestry exposed individuals, 42,507 European ancestry unexposed individuals, 1,102 African ancestry exposed individuals, 18,554 African ancestry unexposed individuals, The HapMap/LCAce American exposed individuals, 14,330 Hispanic/Latino American unexposed individuals

Well-being spectrum (multivariate analysis)

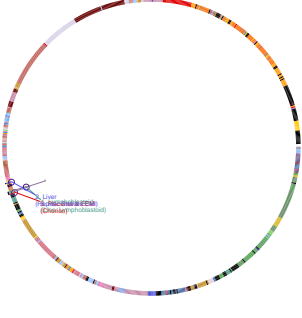
30643256



2,083,151 European ancestry individuals

Height

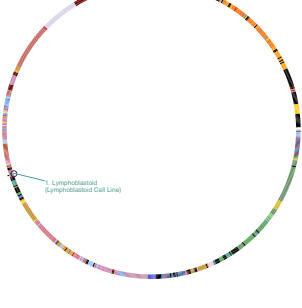
25282103



253,288 European ancestry individuals

Feeling lonely

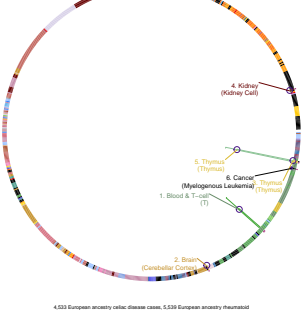
29503282



274,303 European ancestry individuals

Celiac disease or Rheumatoid arthritis

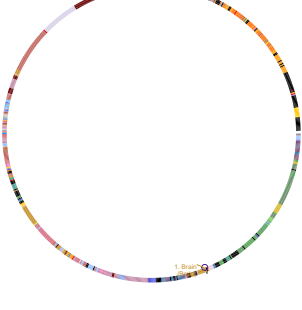
21383967



4,033 European ancestry celiac disease cases, 5,534 European ancestry Rheumatoid arthritis cases, 27,381 European ancestry controls

Smoking initiation (ever regular vs never regular)

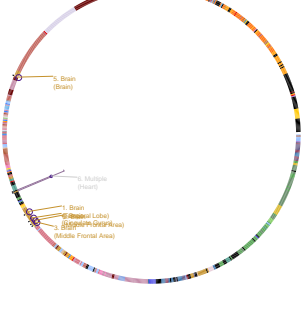
30643251



up to 1,232,091 European ancestry individuals

Neuroticism

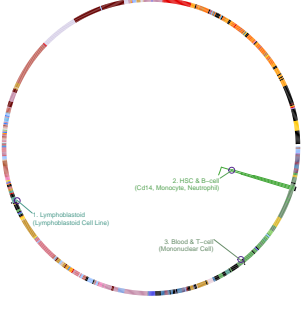
29942085



445,484 European ancestry individuals

Obstructive sleep apnea trait (average respiratory event duration)

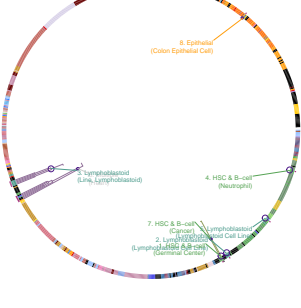
3497732



10,238 Hispanic/Latino American ancestry individuals

Allergy

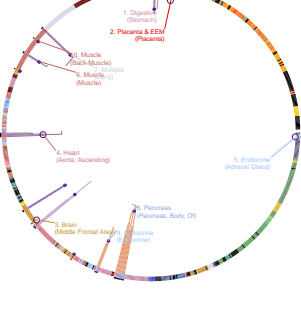
27182965



68,870 European ancestry cases, 113,788 European ancestry controls

Headache

26397368



74,461 British ancestry cases, 149,321 British ancestry controls

Age at first sexual intercourse

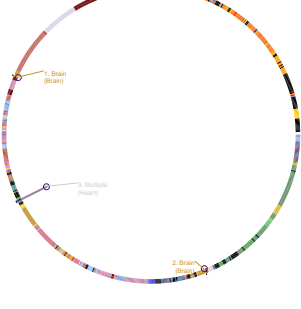
27089180



58,357 British ancestry males, 66,310 British ancestry females

Smoking initiation (ever regular vs never regular) (MTAG)

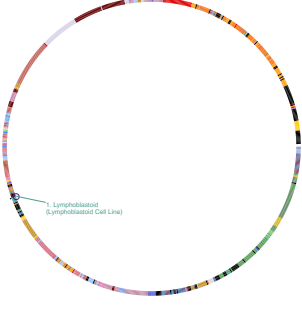
30643250



up to 1,338,002 European ancestry individuals

Sleep duration (short sleep)

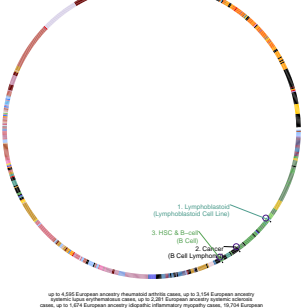
30846698



106,102 European ancestry cases, 305,740 European ancestry controls

Systemic seropositive rheumatic diseases (Systemic sclerosis or systemic lupus erythematosus or rheumatoid arthritis or idiopathic inflammatory myopathies)

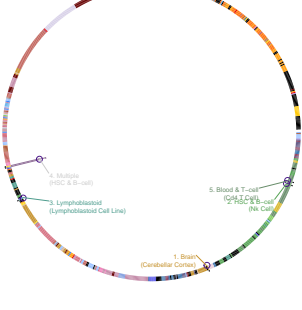
27182965



up to 4,656 European ancestry rheumatoid arthritis cases, up to 3,154 European ancestry systemic lupus erythematosus cases, up to 2,891 European ancestry systemic sclerosis cases, up to 1,074 European ancestry idiopathic inflammatory myopathies cases, 50,214 European ancestry controls

Asthma

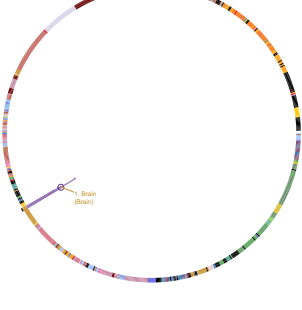
27182965



26,389 European ancestry cases, 128,843 European ancestry controls

Cholesterol, total

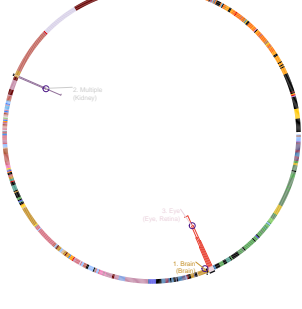
28270201



15,259 British ancestry females from 682 families

General risk tolerance (MTAG)

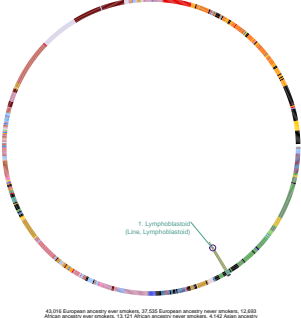
30643258



675,303 European ancestry individuals

Systolic blood pressure x smoking status (ever vs never) interaction (2df test)

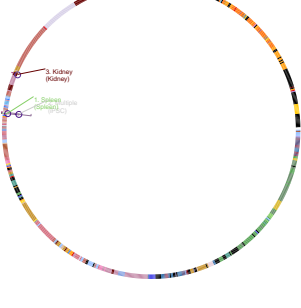
262654



43,041 European ancestry ever smokers, 37,031 European ancestry never smokers, 12,893 African ancestry ever smokers, 11,171 African ancestry never smokers, 47,411 Asian ancestry ever smokers, 3,256 Asian ancestry never smokers, 1,229 Hispanic ancestry ever smokers, 5,177 Hispanic ancestry never smokers

Height

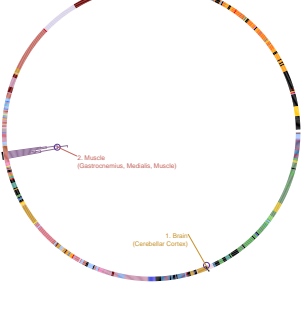
29782485



202,288 European ancestry individuals

Waist-hip ratio

20326229



Up to 77,167 European ancestry individuals

Neuroticism

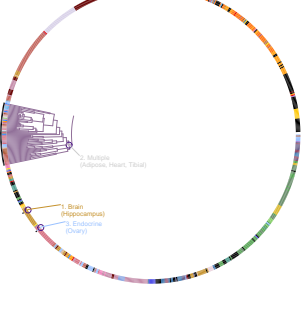
30643256



53,763 European ancestry individuals

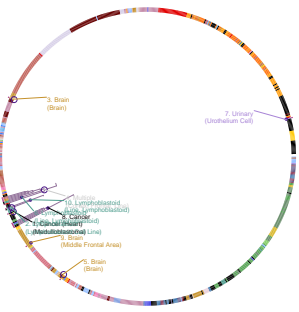
Lactate dehydrogenase levels

29403010



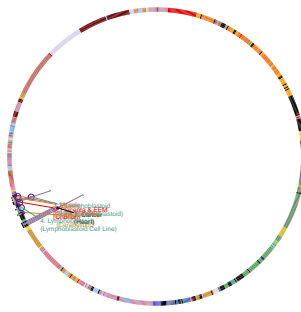
136,313 Japanese ancestry individuals

Educational attainment (years of education)
30595370



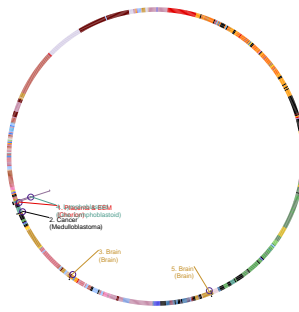
approximately 45,000 European ancestry individuals

Factor VII activity
30642921



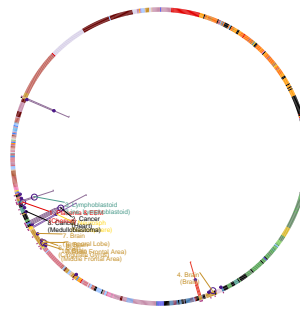
26,014 European ancestry individuals, 3,403 African ancestry individuals

Self-reported math ability (MTAG)
30038396



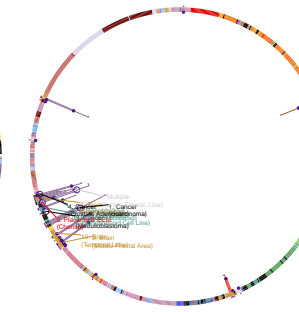
670,471 European ancestry individuals

Highest math class taken (MTAG)
30038396



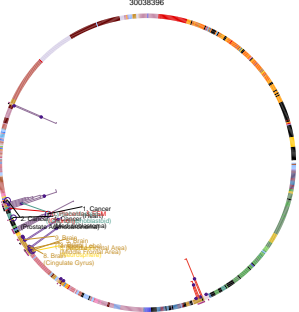
811,530 European ancestry individuals

Educational attainment (years of education)
30038396



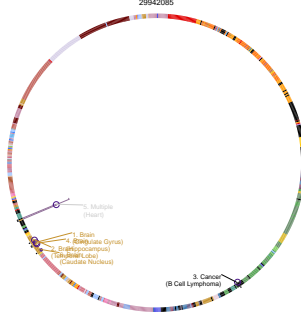
up to 1,511,881 European ancestry individuals

Educational attainment (MTAG)
30038396



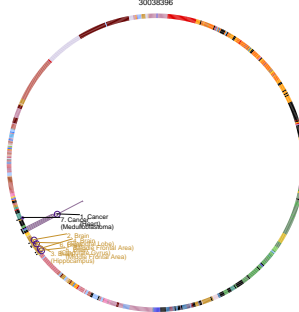
1,241,408 European ancestry individuals

Depressed affect
29942085



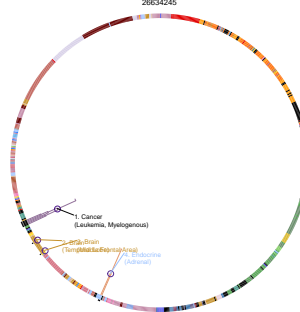
327,821 European ancestry individuals

Self-reported math ability
30038396



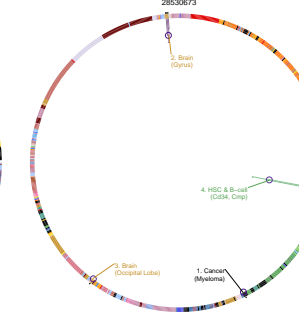
564,698 European ancestry individuals

Post bronchodilator FEV1/FVC ratio
28634245



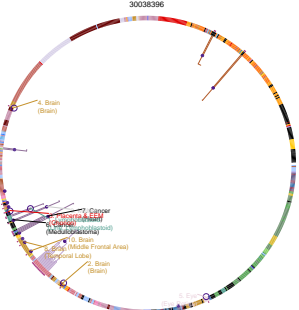
10,046 European ancestry current and former smoker individuals, 3,280 African American current and former smoker individuals, 176 cancer and former smoker individuals

Intelligence
28530673



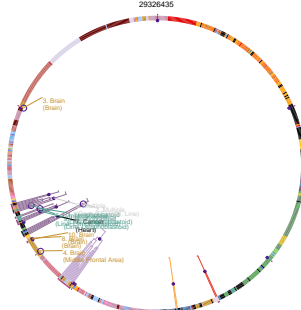
up to 50,709 European ancestry adults, up to 10,500 European ancestry children

Cognitive performance (MTAG)
30038396



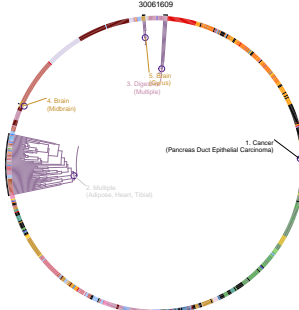
402,380 European ancestry individuals

Intelligence (MTAG)
29226435



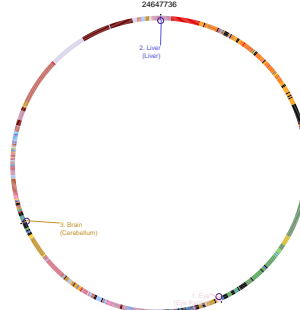
120,044 British ancestry individuals, 127,546 individuals

Lung function (FVC)
30061609



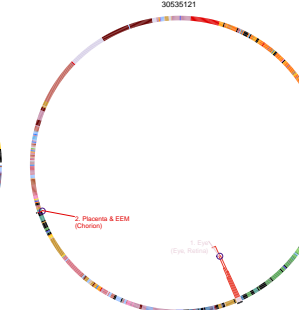
60,552 European ancestry individuals, 8,429 African individuals, 9,309 African ancestry individuals, 11,775 Hispanic individuals

Glycated hemoglobin levels
24647736



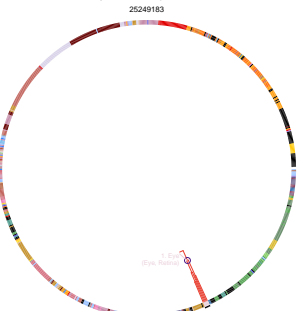
17,200 East Asian ancestry individuals, 1,727 Malay ancestry individuals

Macular thickness
36536121



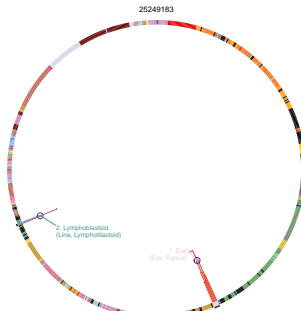
58,814 European ancestry individuals

Systolic blood pressure
25249183



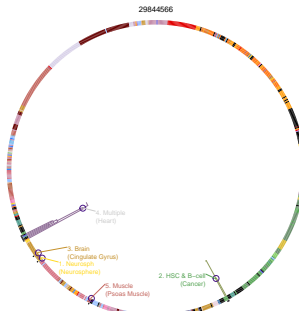
11,816 Han Chinese ancestry individuals

Diastolic blood pressure
25249183



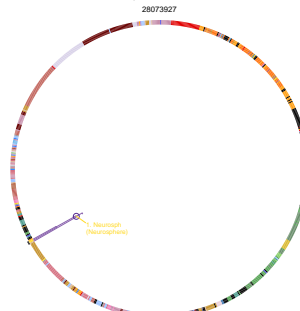
11,816 Han Chinese ancestry individuals

Reaction time
29844566



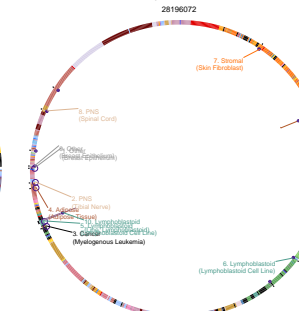
300,000 European ancestry individuals

Optic disc area
28073927



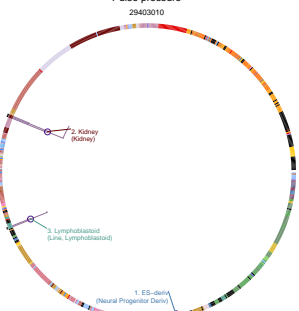
20,373 European ancestry individuals, 2,151 European Russian (biodivergenet isolates) individuals

Male-pattern baldness
28196072



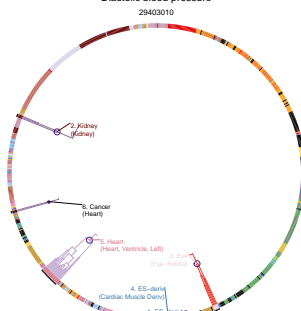
52,814 British ancestry males

Pulse pressure
29403010



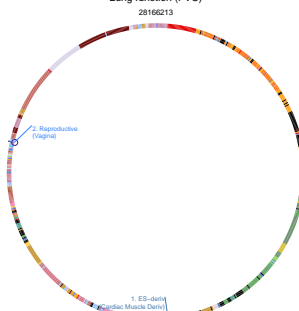
138,149 Japanese ancestry individuals

Diastolic blood pressure
29403010



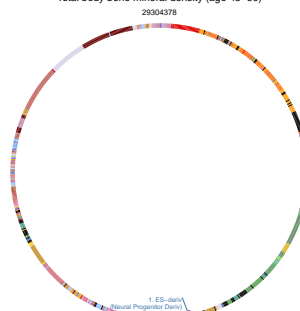
138,149 Japanese ancestry individuals

Lung function (FVC)
29166213



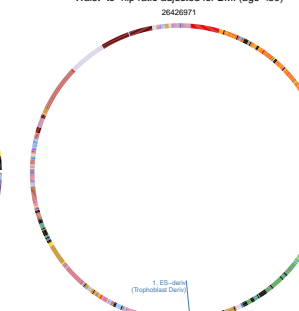
48,843 European ancestry individuals

Total body bone mineral density (age 45-60)
29304378



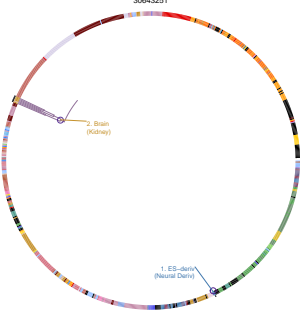
18,865 European individuals

Waist-to-hip ratio adjusted for BMI (age <50)
26428971

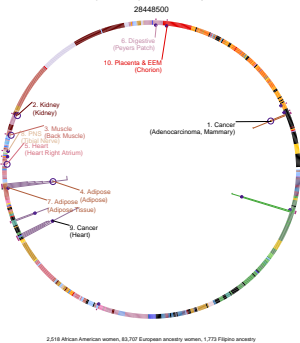


up to 43,776 European ancestry men, up to 10,538 European ancestry women

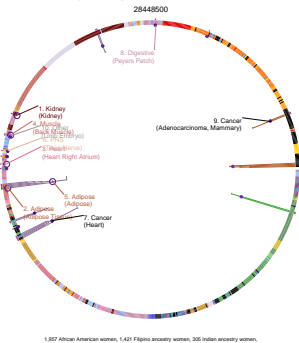
Alcohol consumption (drinks per week)



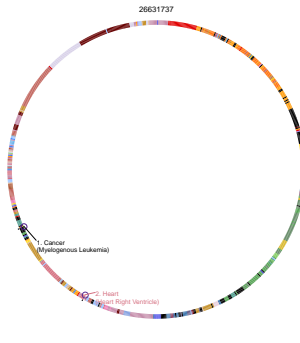
Waist-to-hip ratio adjusted for body mass index



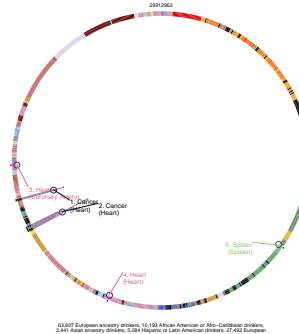
Waist-to-hip ratio adjusted for BMI in active individuals



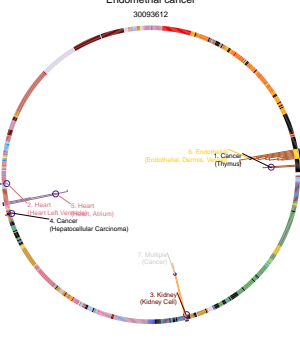
Microalbuminuria



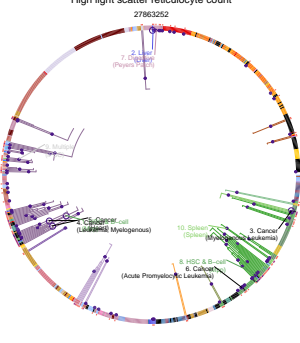
Diastolic blood pressure x alcohol consumption interaction (Zdf test)



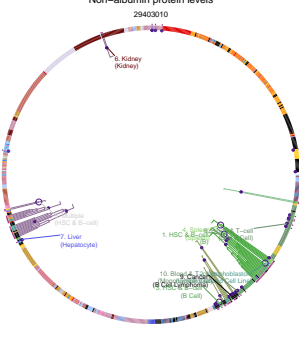
Endometrial cancer



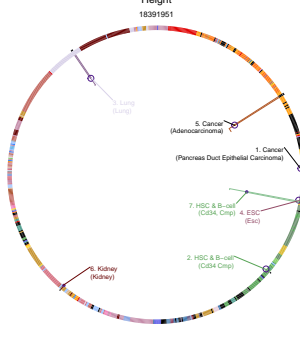
High light scatter reticulocyte count



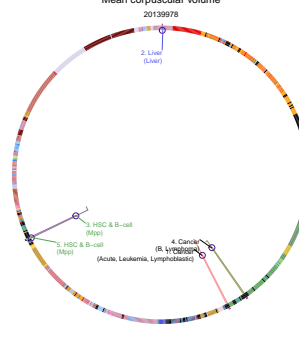
Non-albumin protein levels



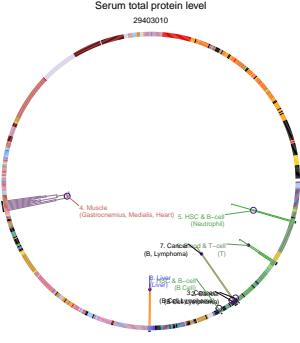
Height



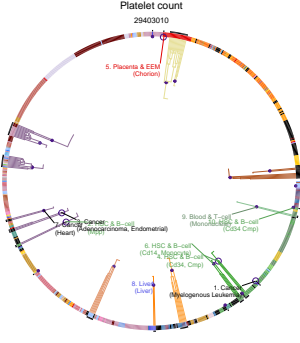
Mean corpuscular volume



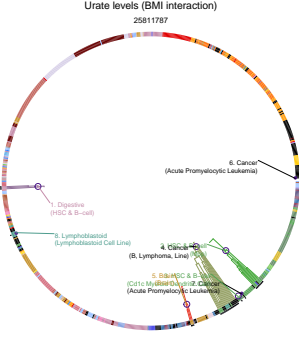
Serum total protein level



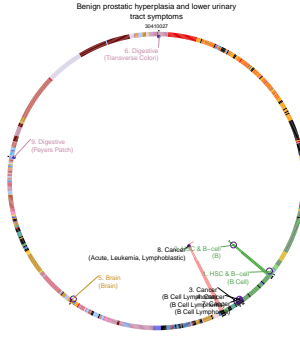
Platelet count



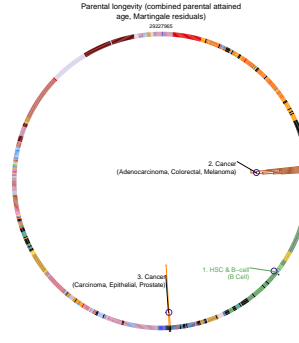
Urate levels (BMI interaction)



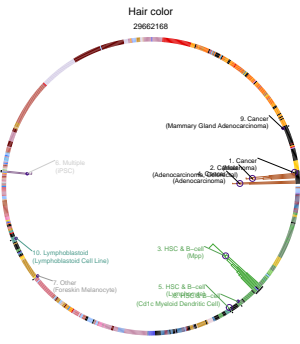
Benign prostatic hyperplasia and lower urinary tract symptoms



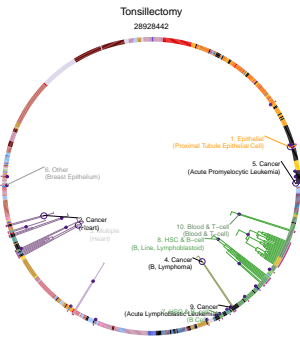
Parental longevity (combined parental attained age, Maternal residuals)



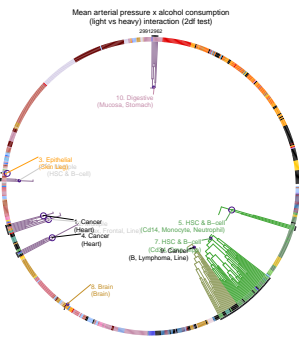
Hair color



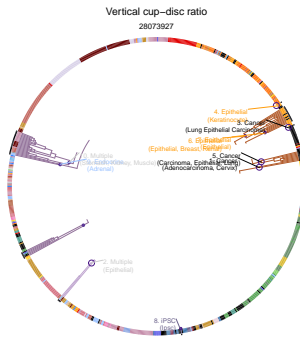
Tonsillectomy



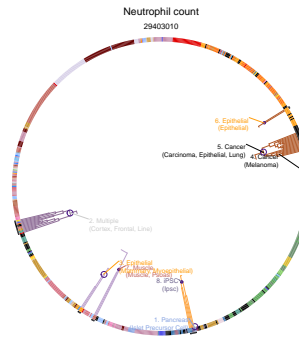
Mean arterial pressure x alcohol consumption (light vs heavy) interaction (Zdf test)



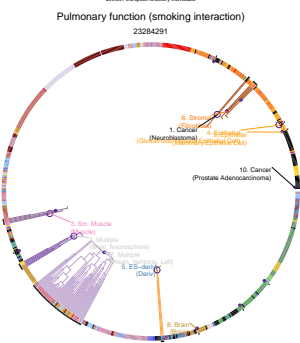
Vertical cup-disc ratio



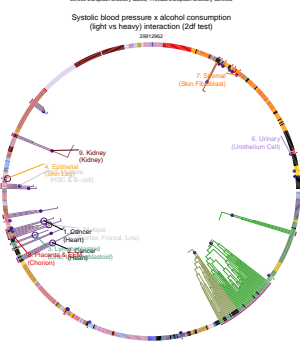
Neutrophil count



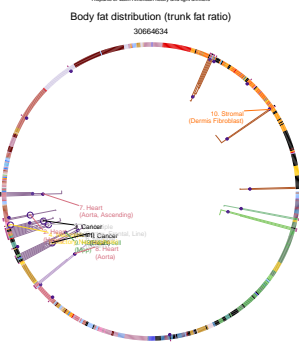
Pulmonary function (smoking interaction)



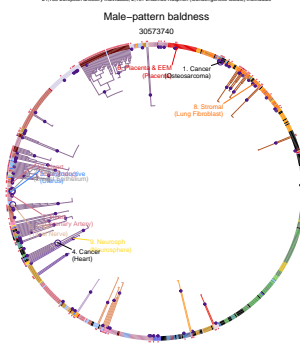
Systemic blood pressure x alcohol consumption (light vs heavy) interaction (Zdf test)



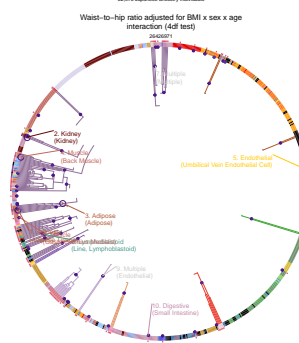
Body fat distribution (trunk fat ratio)



Male-pattern baldness



Waist-to-hip ratio adjusted for BMI x sex x age interaction (Zdf test)



Endometrial cancer



Platelet count



Urate levels (BMI interaction)



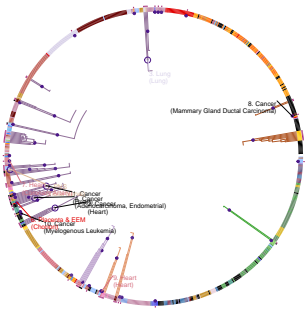
Benign prostatic hyperplasia and lower urinary tract symptoms



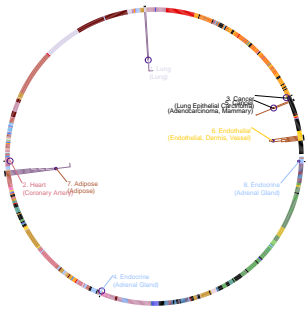
Parental longevity (combined parental attained age, Maternal residuals)



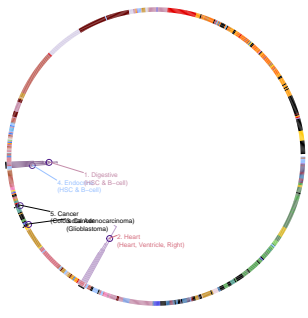
Diastolic blood pressure
27841878



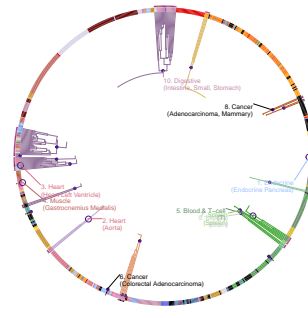
Waist-to-hip ratio adjusted for BMI x sex interaction
26426971



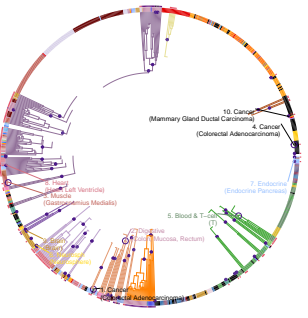
Homeostasis model assessment of beta-cell function
20081858



Colorectal cancer
26151821



Colorectal cancer
29917119



196,228 European ancestry individuals, 8,231 Latino individuals, 3,058 African ancestry individuals, 2,222 Ashkenazi Jewish individuals, 7,701 East Asian ancestry individuals, 2,122 South Asian ancestry individuals, 1,173 French Canadian ancestry individuals

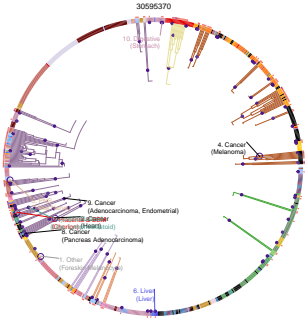
up to 113,700 European ancestry men, up to 138,855 European ancestry women

36,466 European ancestry individuals

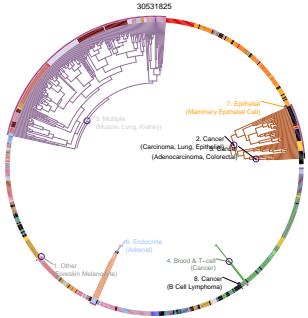
18,299 European ancestry cases, 18,838 European ancestry controls

34,948 European ancestry cases, 30,846 European ancestry controls

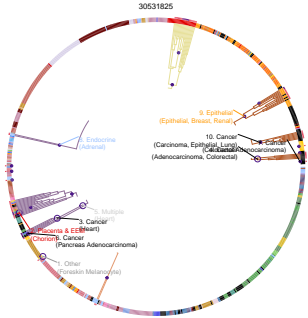
Hair color
30595370



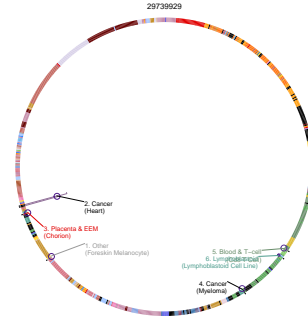
Brown vs. black hair color
30531825



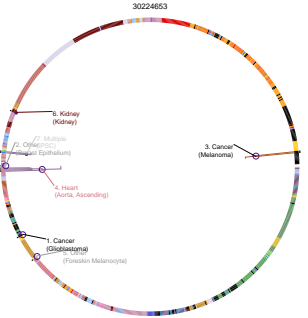
Blond vs. brown/black hair color
30531825



Low tan response
29739929



Diastolic blood pressure
30224653



approximately 102,000 European ancestry individuals

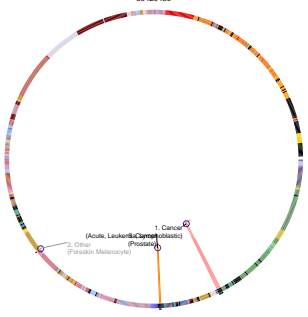
300,236 British ancestry brown hair individuals, 11,526 British ancestry black hair individuals

39,387 British ancestry blond hair individuals, 263,503 British ancestry brown or black non-blond

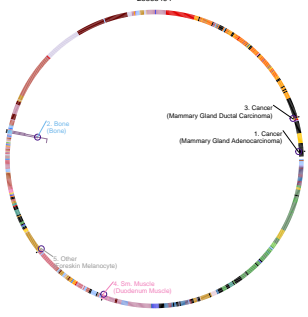
42,788 European ancestry low tanning cases, 74,528 European ancestry moderate and high tanning controls

72,691 European ancestry individuals

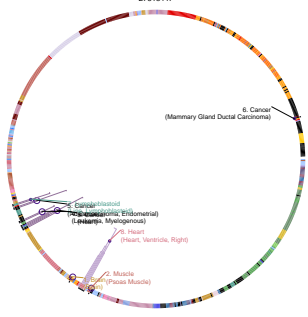
Nevus count or cutaneous melanoma
30429489



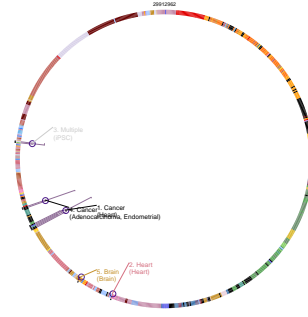
Sitting height ratio
2885694



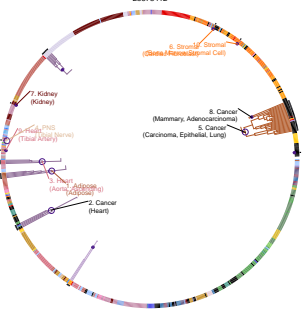
Diastolic blood pressure
27618447



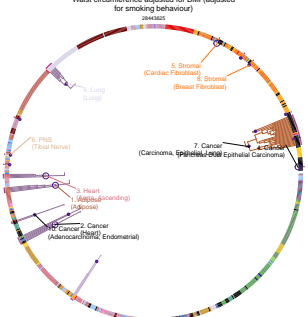
Systolic blood pressure x alcohol consumption interaction (2df test)
2919262



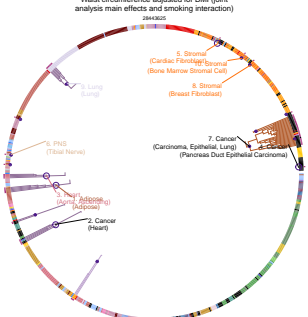
Waist circumference adjusted for body mass index
25672412



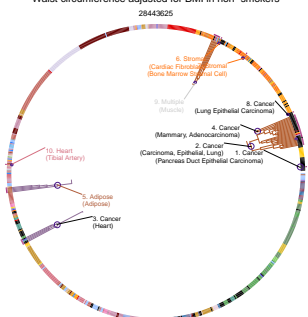
Waist circumference adjusted for BMI (adjusted for smoking behaviour)
96181



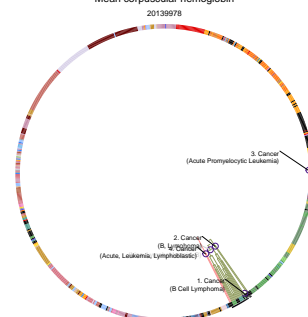
Waist circumference adjusted for BMI (joint analysis main effects and smoking interaction)
964325



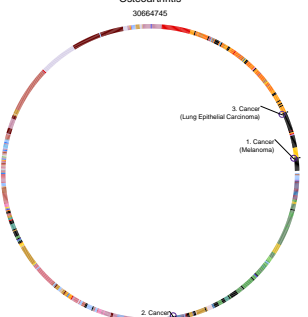
Waist circumference adjusted for BMI in non-smokers
28443625



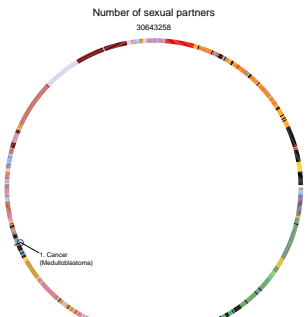
Mean corpuscular hemoglobin
20139978



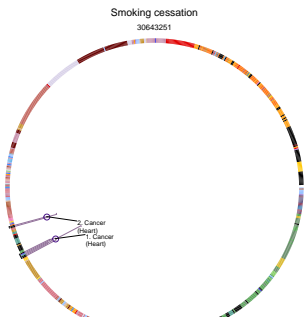
Osteoarthritis
30664745



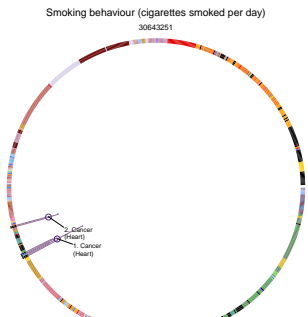
Number of sexual partners
30643258



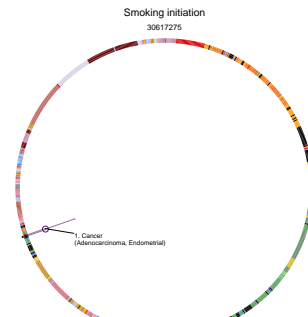
Smoking cessation
30643251



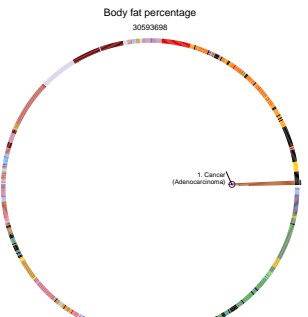
Smoking behaviour (cigarettes smoked per day)
30643251



Smoking initiation
30617275



Body fat percentage
30593688



371,711 European ancestry individuals

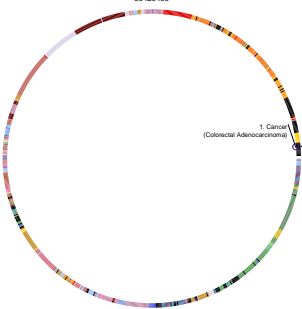
up to 542,218 European ancestry individuals

up to 377,324 European ancestry individuals

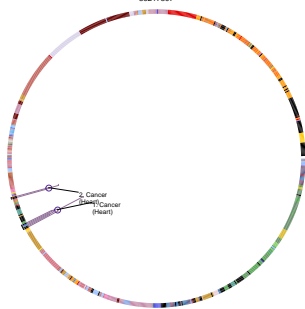
324,851 European ancestry individuals, 21,562 South Asian ancestry individuals

70,793 European ancestry female individuals, 65,261 European ancestry male individuals

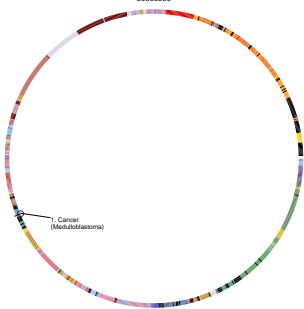
Nevus count
30429480



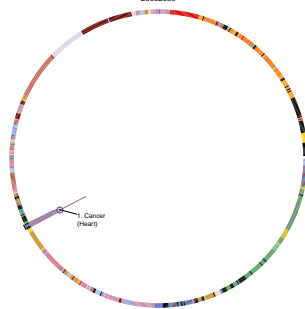
Circulating fibroblast growth factor 23 levels
30217807



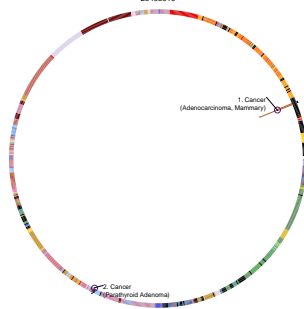
Highest math class taken
30038396



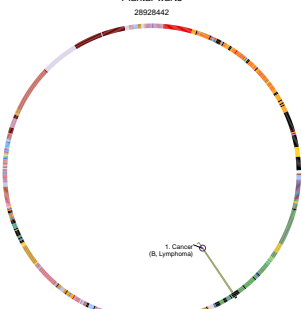
Depression (broad)
29662059



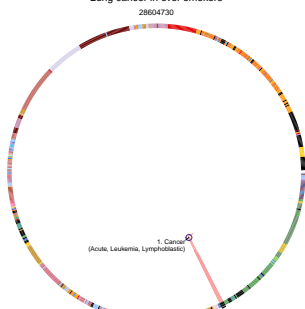
Calcium levels
29403010



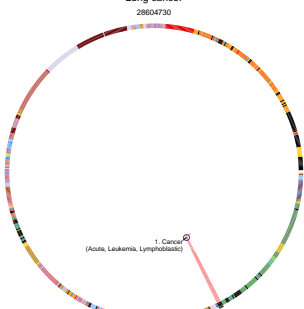
Plantar warts
28928442



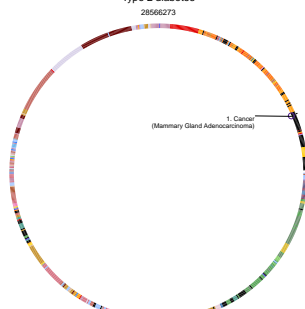
Lung cancer in ever smokers
28604730



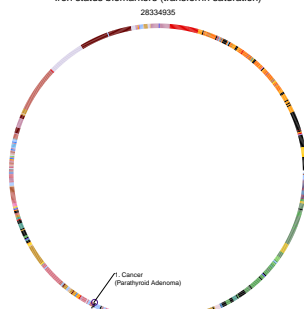
Lung cancer
28604730



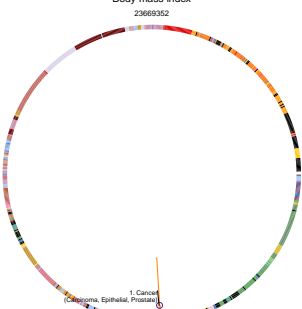
Type 2 diabetes
28566273



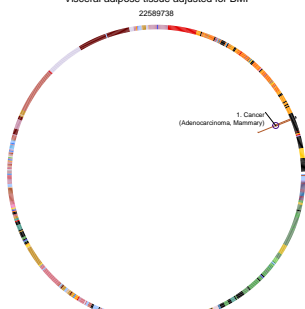
Iron status biomarkers (transferrin saturation)
28334935



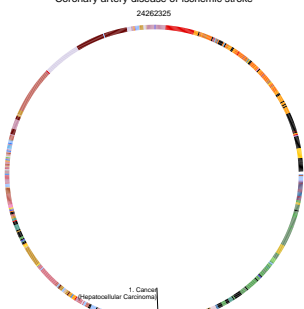
Body mass index
2366352



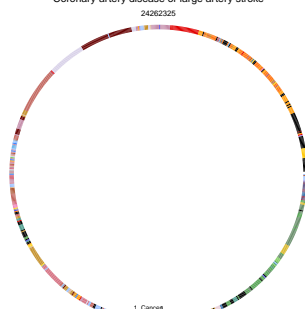
Visceral adipose tissue adjusted for BMI
22589738



Coronary artery disease or ischemic stroke
24262225



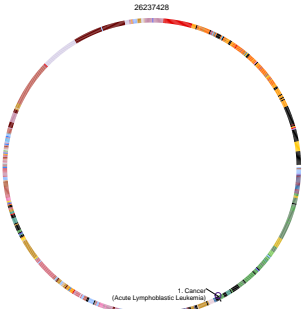
Coronary artery disease or large artery stroke
24262225



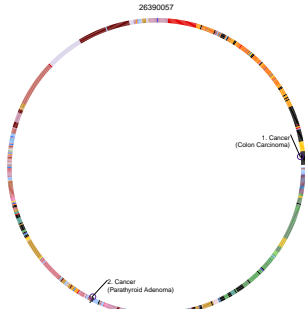
Urate levels in lean individuals
25811787



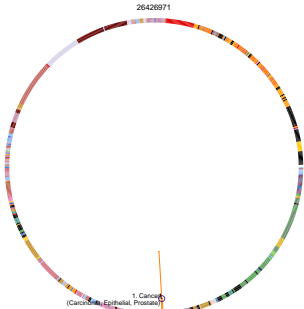
Cutaneous malignant melanoma
26237428



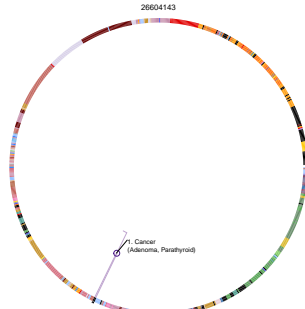
Mean arterial pressure
26390057



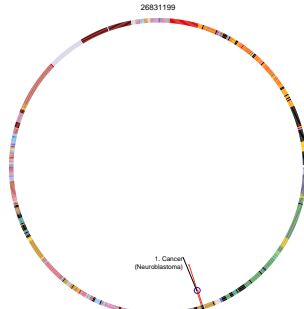
Body mass index
26426971



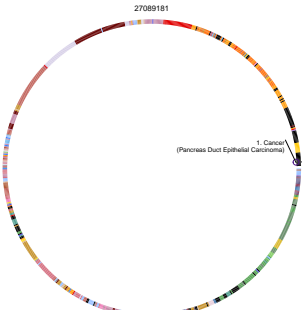
Childhood body mass index
26604143



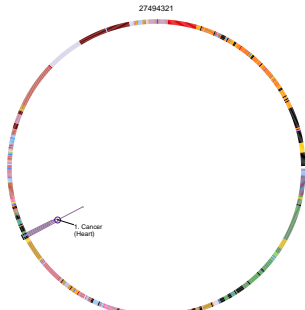
Glomerular filtration rate in non diabetics (creatinine)
26831199



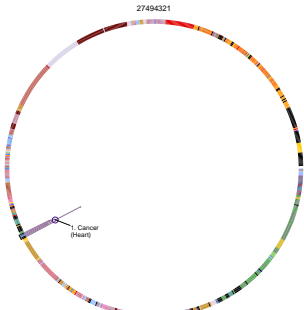
Positive affect
27089181



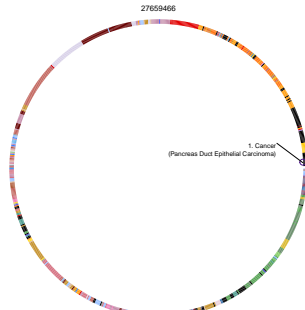
Chronotype
27494321



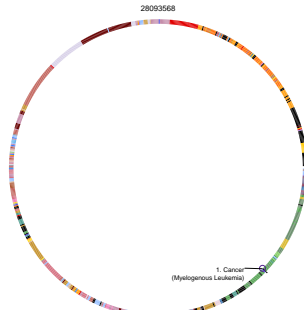
Morning vs. evening chronotype
27494321



QRS complex (Cornell)
27659466



Cognitive function
28093568



182,261 Bonferroni (log₁₀-transformed) values. Self (blue) and genetic (red) values. Via (blue) and genetic (red) values. Chromosome: Position (Mb) and recombination rate (cM/Mb) and other European ancestry individuals.

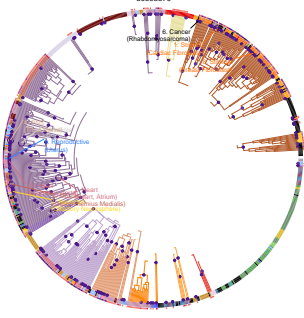
127,888 British individuals.

114,765 British individuals.

up to 16,172 European ancestry individuals, up to 800 Orkney (founder genetic isolates) individuals.

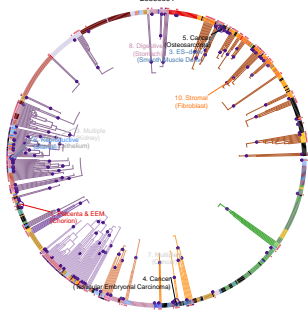
up to 35,238 European ancestry individuals.

Lung function (FVC)
30595370



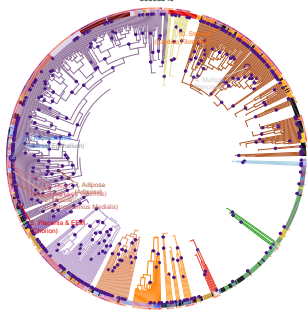
approximately 372,000 European ancestry individuals

Heel bone mineral density
28969591



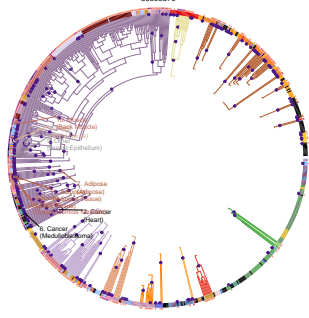
70,967 European ancestry women, 60,405 European ancestry men

Heel bone mineral density
30598549



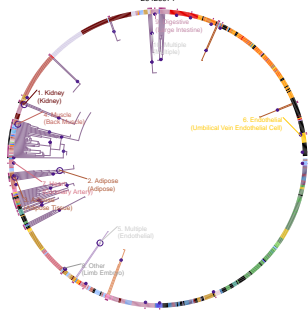
426,804 Brain ancestry individuals

Waist-hip ratio
30595370



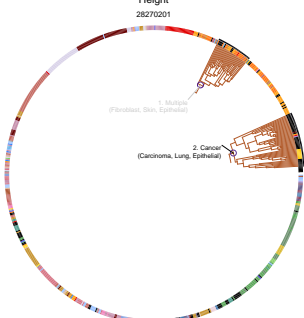
approximately 428,000 European ancestry individuals

Waist-to-hip ratio adjusted for BMI
26426971



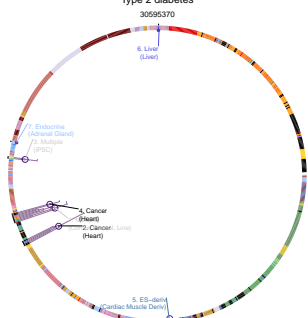
up to 113,726 European ancestry men, up to 138,665 European ancestry women

Height
28270201



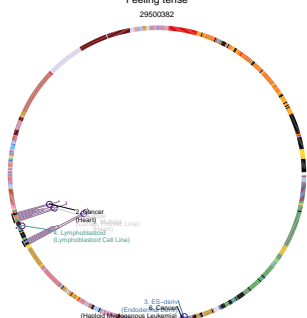
10,862 British ancestry individuals from 6803 families

Type 2 diabetes
30595370



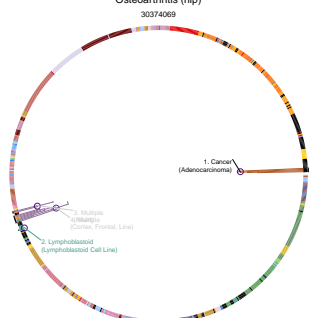
approximately 650,000 European ancestry individuals

Feeling tense
29500382



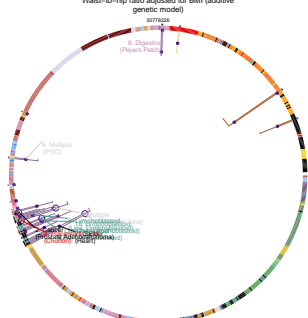
271,318 European ancestry individuals

Osteoarthritis (hip)
30274069



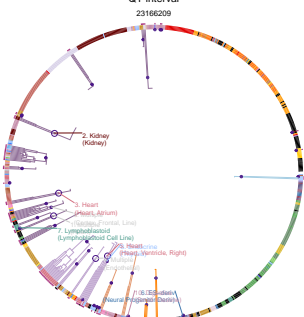
17,161 European ancestry cases, 506,630 European ancestry controls

Waist-to-hip ratio adjusted for BMI (additive genetic model)
30595370



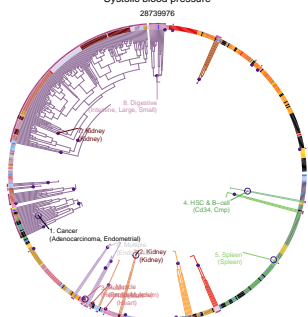
285,465 European ancestry individuals, up to 16,667 African American individuals, up to 24,215 South Asian ancestry individuals, up to 8,600 East Asian ancestry individuals, up to 2,651 Hispanic/Latino ancestry individuals

QT interval
23186209



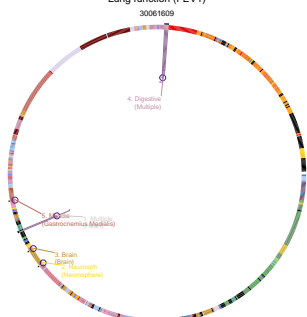
13,165 African American individuals

Systolic blood pressure
28729976



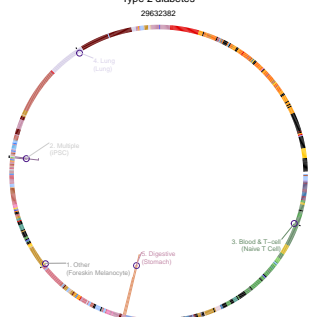
103,124 European ancestry individuals

Lung function (FEV1)
30061698



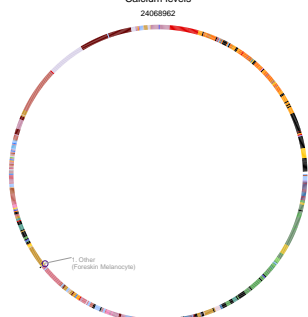
65,512 European ancestry individuals, 8,420 African individuals, 9,328 Korean ancestry individuals, 11,775 Hispanic individuals

Type 2 diabetes
29632382



46,288 European ancestry cases, 565,271 European ancestry controls, 33,136 African American, East Indian, Hispanic/Latino or South Asian cases, 126,161 African American, East Asian, Hispanic/Latino or South Asian controls

Calcium levels
24068962



38,400 European ancestry individuals