

## Supplemental appendix

### Table of contents

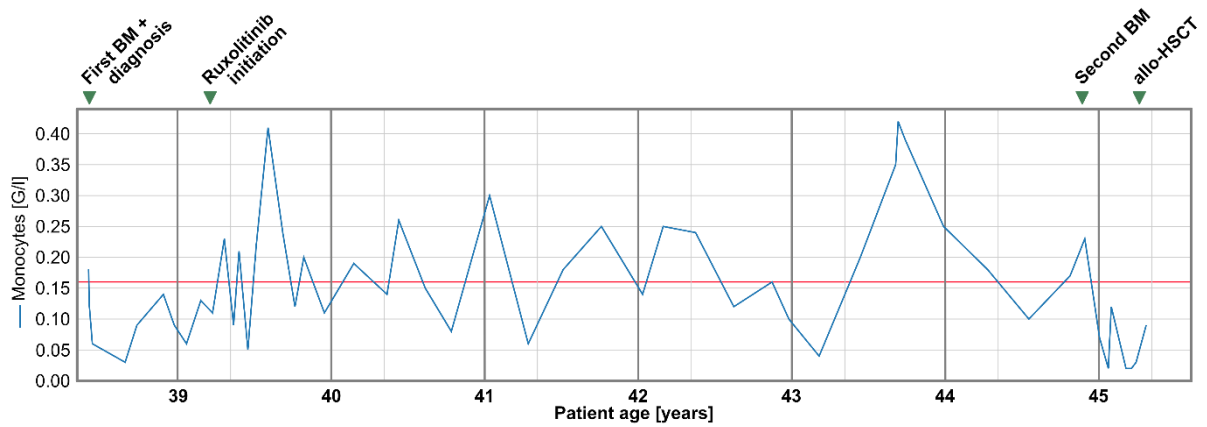
<b>Section</b>	<b>Page</b>
Supplemental table	2
Supplemental figures	3

**Supplemental table**

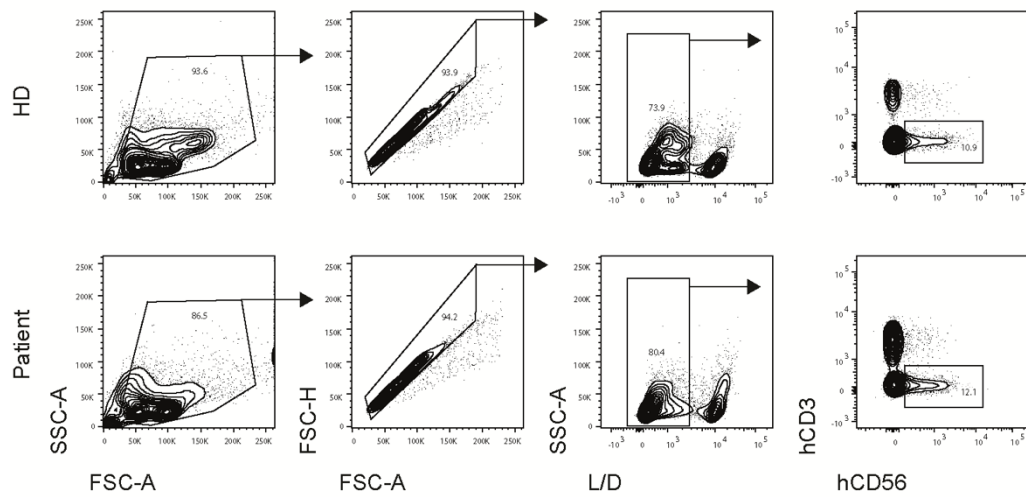
<b>Years from diagnosis</b>	<b>JAK2-V617F VAF [%]</b>	<b>GATA2-N317S VAF [%]</b>	<b>Karyotype</b>	<b>ETV6 deletion</b>	<b>Source</b>
0	55.2	46.0	46,XX,t(3;12) (p21;p13)[3]/46,XX[7]	[50/200] (25%)	BM
4.0	61.4	47.9	NA	NA	PB
4.6	11.8	50.0	NA	NA	CU
6.4	72.8	50.5	NA	NA	PB
6.5	73.5	49.2	NA	NA	PB
6.6	80.4	47.6	NA	NA	BM
6.6	5.5	51.6	NA	NA	BS
6.8	NA	NA	NA	[51/100] (51%)	BM

**Supplemental table 1. Molecular and cytogenetic parameters over time.** VAF, variant allele frequency. BM, bone marrow; PB, peripheral blood; CU, cervix uteri; BS, buccal swab; NA, not assessed. The *ETV6* deletion was assessed by fluorescence in situ hybridization; numbers in square brackets indicate number of positive probes per total cells analyzed.

**Supplemental figures**



**Supplemental figure 1. Monocyte count over time.** Reference range 0.16-0.95 G/l. The red line refers to the lower reference value.



**Supplemental figure 2. Representative flow cytometric analysis of natural killer (NK) cells.** Top: Mobilized peripheral blood mononuclear cells (PBMCs) from a healthy donor (HD). Bottom: Patient PBMCs. NK cells were defined as CD3-CD56+. L/D, live/dead cells.