

Supplementary material

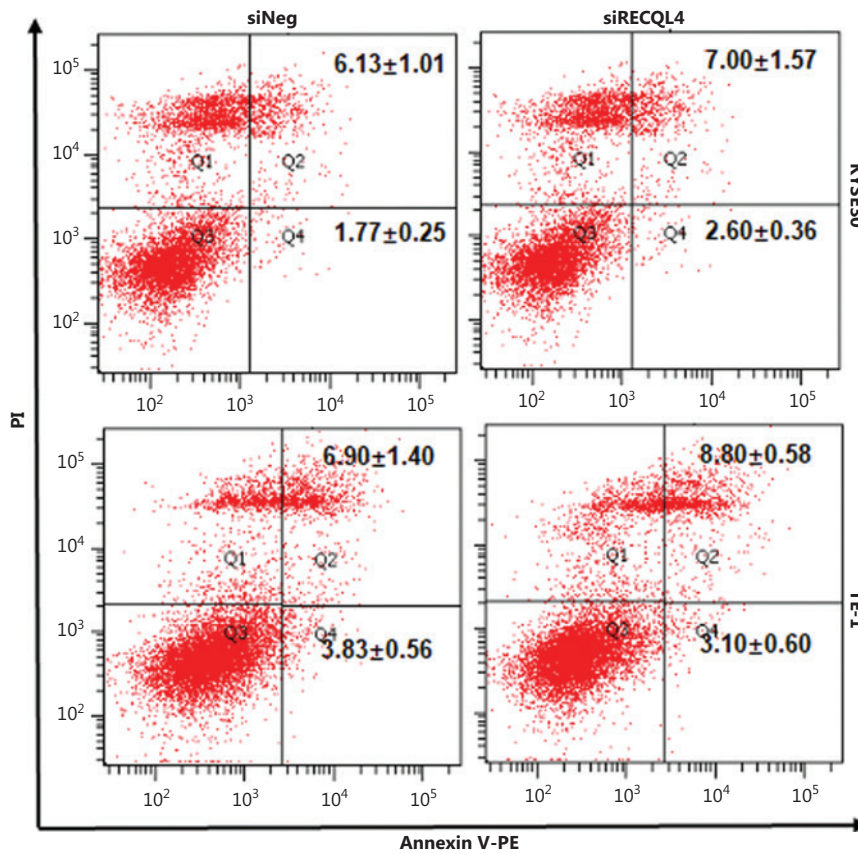


Figure S1 Apoptosis in RECQL4 knockdown cell lines (KYSE30 and TE-1 cells) and controls was determined by flow cytometry. KYSE30 and TE-1 cells were transfected with siRNA duplexes (200 nM) specific to RECQL4 or negative oligo in serum-free medium for 4 h, then replaced with complete medium for 24 h. The percentages of annexin V- or/and propidium-positive cells are indicated.