

# Supplemental Digital Content 1: Trends in Late HIV Diagnosis in Texas, 1996-2013

Figure 1a: Trends in Presentation with Advanced HIV Disease, by Age Group

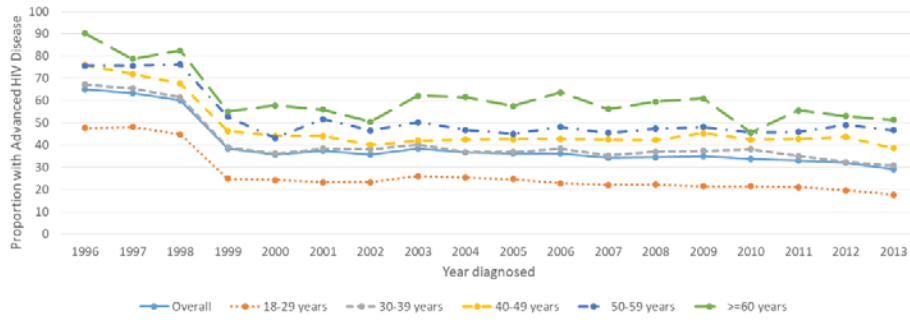


Figure 1b: Trends in Presentation with Advanced HIV Disease, by Race/Ethnicity

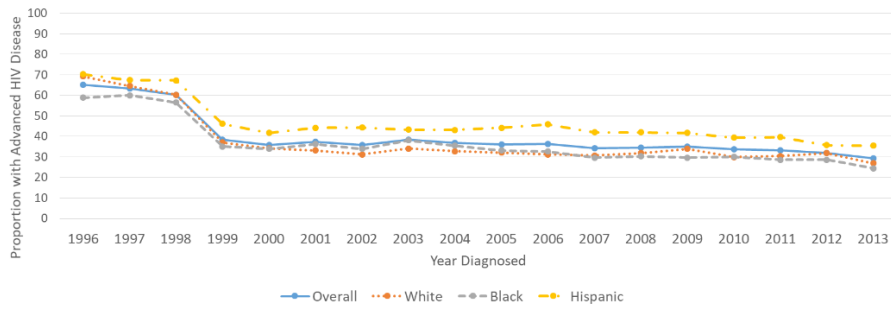


Figure 1c: Trends in Presentation with Advanced HIV Disease, by Risk Group (Males)

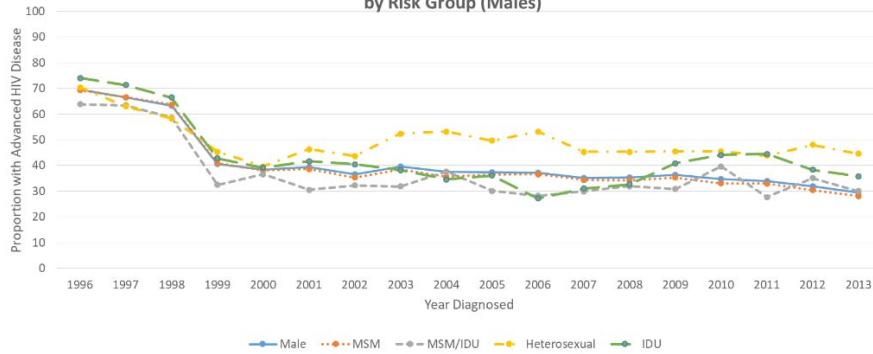


Figure 1d: Trends in Presentation with Advanced HIV Disease, by Risk Group (Females)

