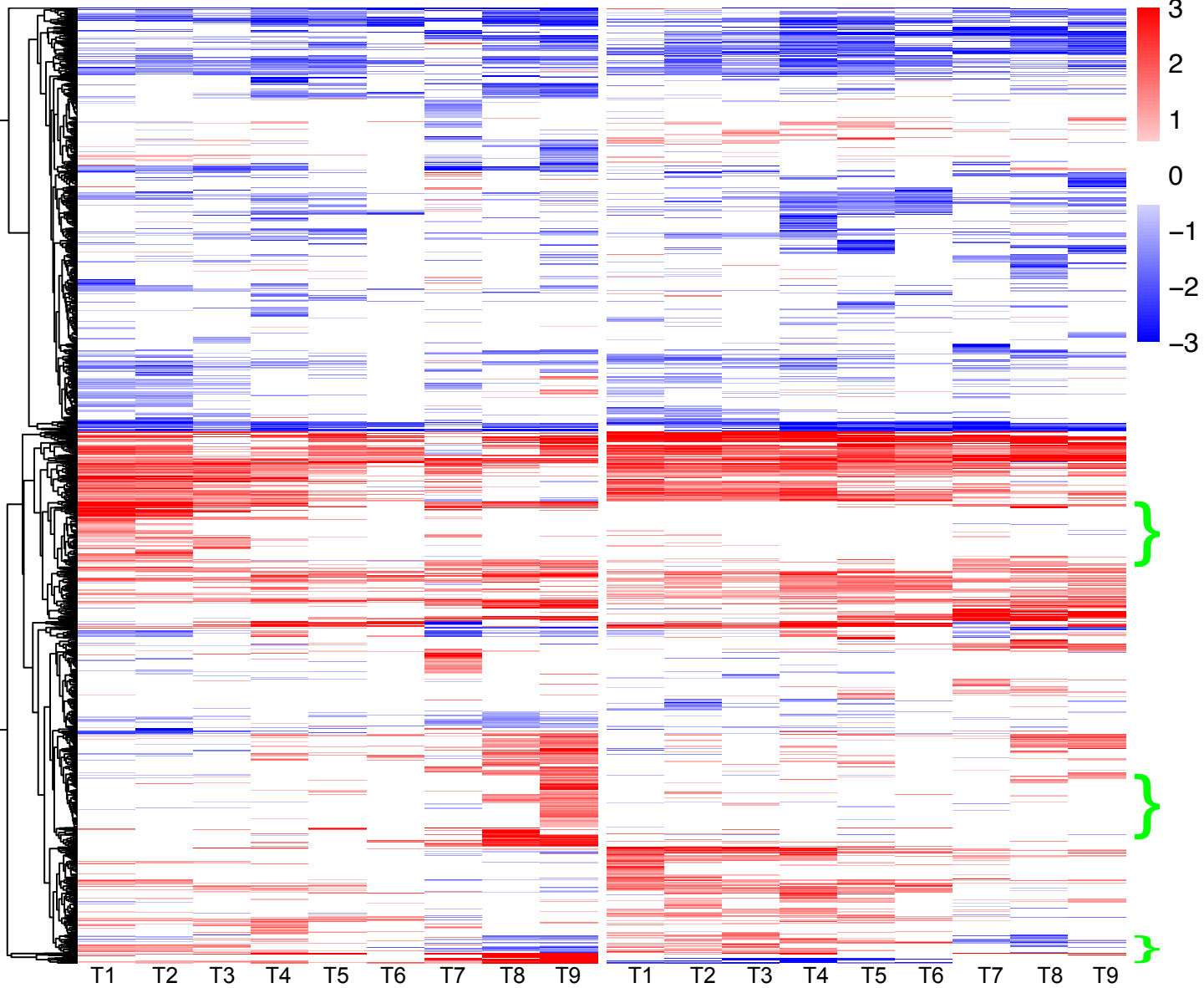


# 200 MPa All DE Genes

## RO15

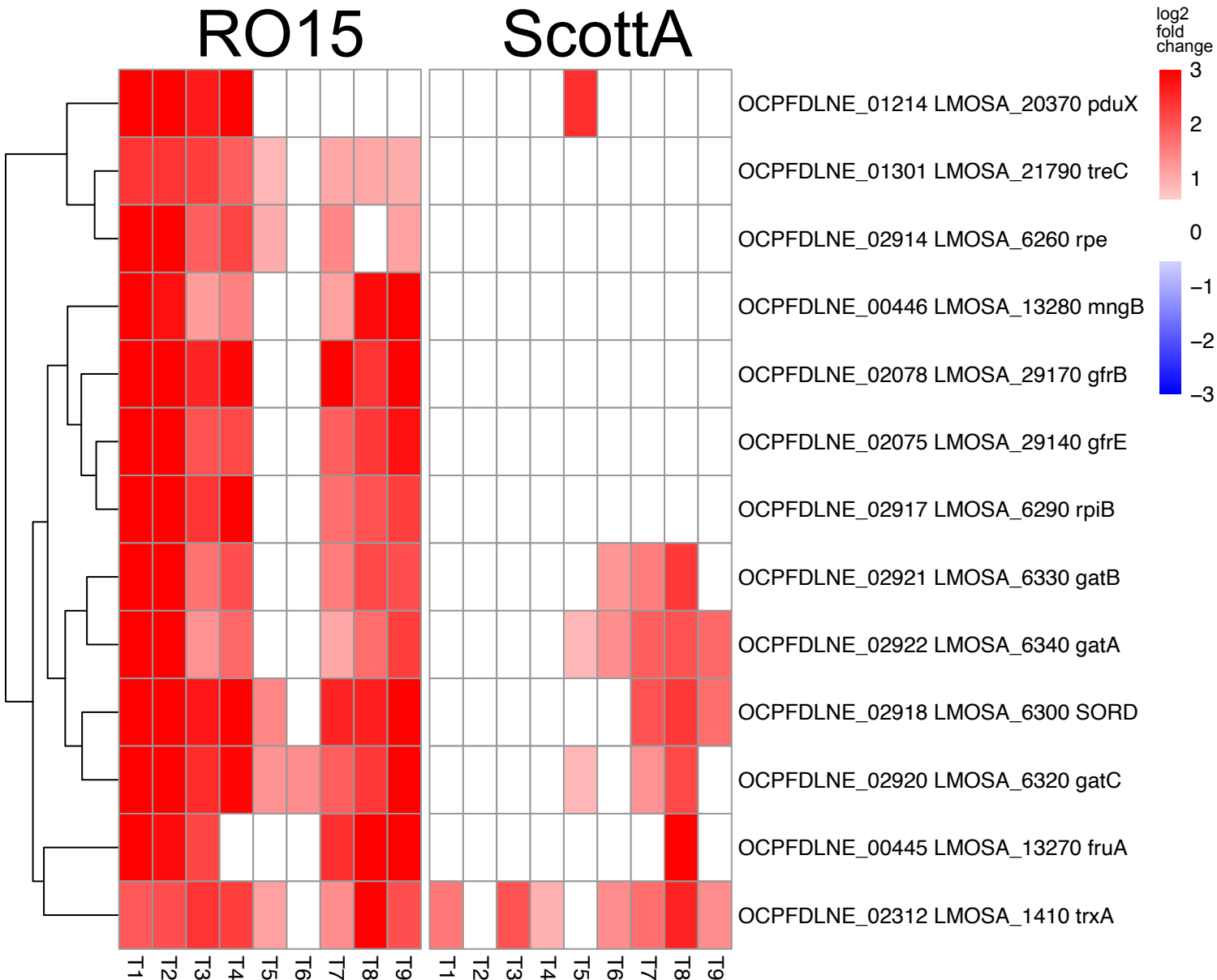
## ScottA



# 200 MPa Cluster of interest 1

## RO15

## ScottA

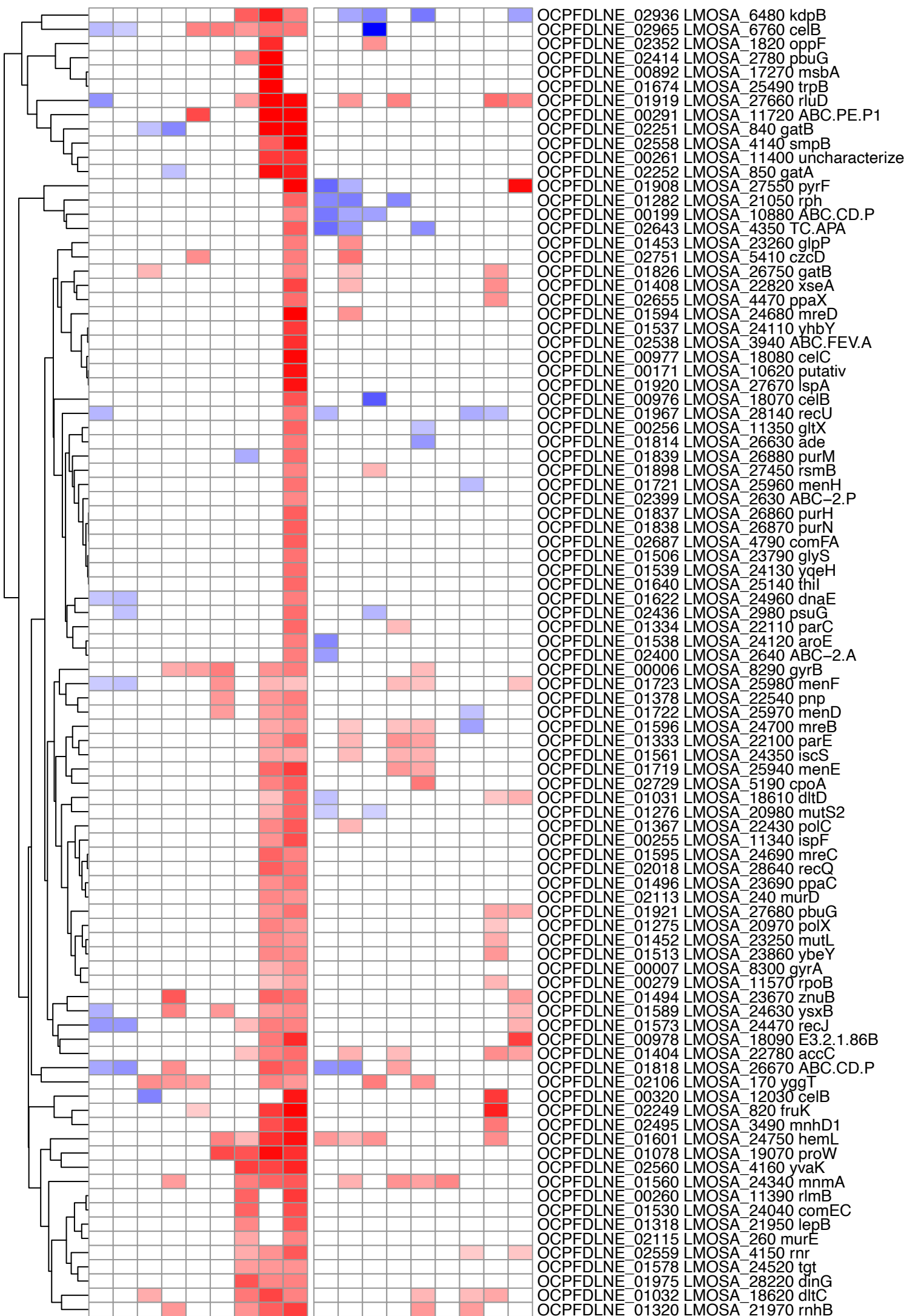


# 200 MPa Cluster of interest 2

## RO15

## ScottA

log<sub>2</sub>  
fold  
change



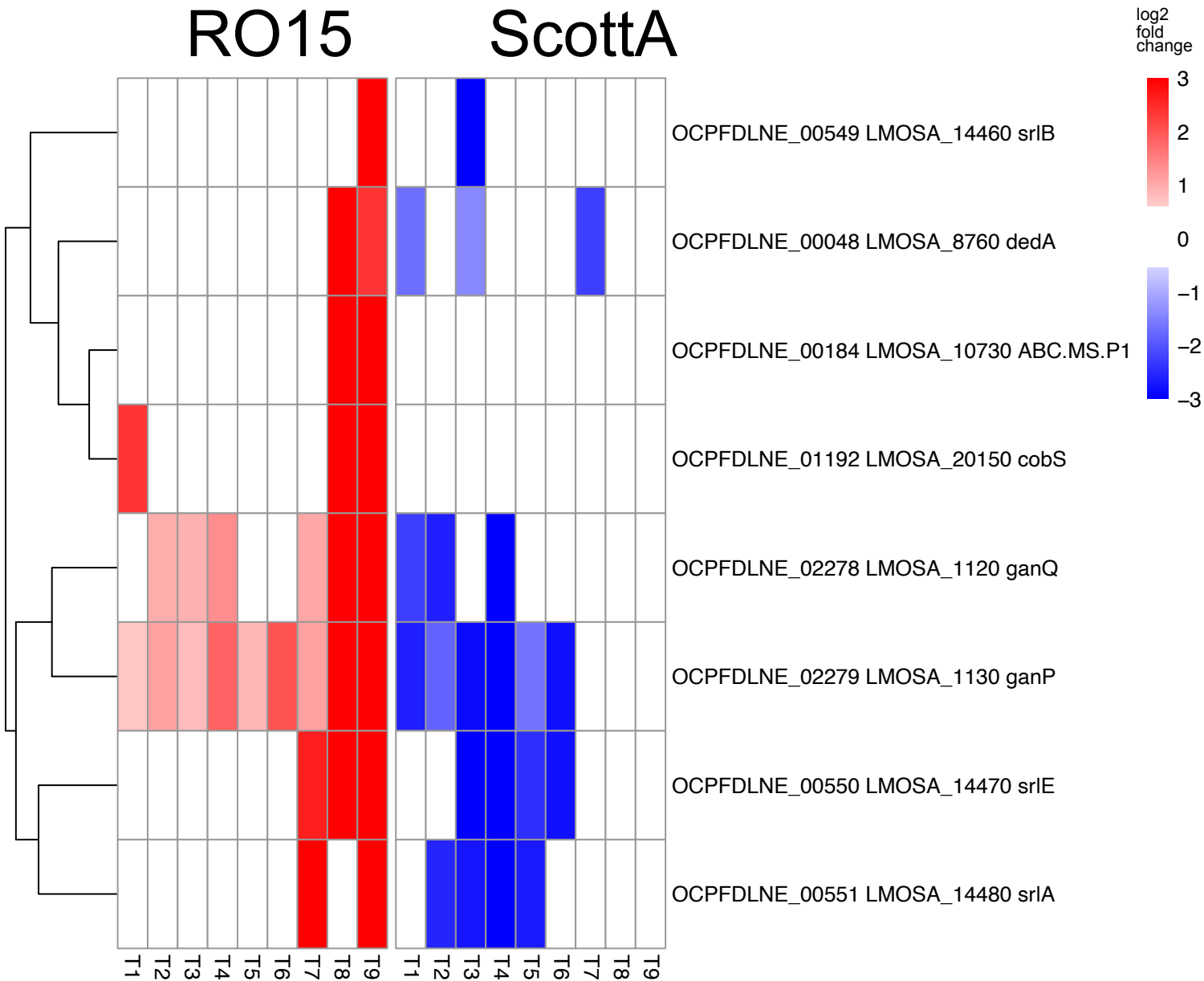
T1 T2 T3 T4 T5 T6 T7 T8 T9 T1 T2 T3 T4 T5 T6 T7 T8 T9

OCPFDLNE\_02936 LMOSA\_6480 kdpB  
 OCPFDLNE\_02965 LMOSA\_6760 celB  
 OCPFDLNE\_02352 LMOSA\_1820 oppF  
 OCPFDLNE\_02414 LMOSA\_2780 pbuG  
 OCPFDLNE\_00892 LMOSA\_17270 msbA  
 OCPFDLNE\_01674 LMOSA\_25490 trpB  
 OCPFDLNE\_01919 LMOSA\_27660 rluD  
 OCPFDLNE\_00291 LMOSA\_11720 ABC.PE.P1  
 OCPFDLNE\_02251 LMOSA\_840 gatB  
 OCPFDLNE\_02558 LMOSA\_4140 smpB  
 OCPFDLNE\_00261 LMOSA\_11400 uncharacterize  
 OCPFDLNE\_02252 LMOSA\_850 gatA  
 OCPFDLNE\_01908 LMOSA\_27550 pyrF  
 OCPFDLNE\_01282 LMOSA\_21050 rph  
 OCPFDLNE\_00199 LMOSA\_10880 ABC.CD.P  
 OCPFDLNE\_02643 LMOSA\_4350 TC.APA  
 OCPFDLNE\_01453 LMOSA\_23260 glpP  
 OCPFDLNE\_02751 LMOSA\_5410 czcD  
 OCPFDLNE\_01826 LMOSA\_26750 gatB  
 OCPFDLNE\_01408 LMOSA\_22820 xseA  
 OCPFDLNE\_02655 LMOSA\_4470 ppaX  
 OCPFDLNE\_01594 LMOSA\_24680 mreD  
 OCPFDLNE\_01537 LMOSA\_24110 yhbY  
 OCPFDLNE\_02538 LMOSA\_3940 ABC.FEV.A  
 OCPFDLNE\_00977 LMOSA\_18080 celC  
 OCPFDLNE\_00171 LMOSA\_10620 putativ  
 OCPFDLNE\_01920 LMOSA\_27670 lspA  
 OCPFDLNE\_00976 LMOSA\_18070 celB  
 OCPFDLNE\_01967 LMOSA\_28140 recU  
 OCPFDLNE\_00256 LMOSA\_11350 gltX  
 OCPFDLNE\_01814 LMOSA\_26630 ade  
 OCPFDLNE\_01839 LMOSA\_26880 purM  
 OCPFDLNE\_01898 LMOSA\_27450 rsmB  
 OCPFDLNE\_01721 LMOSA\_25960 menH  
 OCPFDLNE\_02399 LMOSA\_2630 ABC-2.P  
 OCPFDLNE\_01837 LMOSA\_26860 purH  
 OCPFDLNE\_01838 LMOSA\_26870 purN  
 OCPFDLNE\_02687 LMOSA\_4790 comFA  
 OCPFDLNE\_01506 LMOSA\_23790 glyS  
 OCPFDLNE\_01539 LMOSA\_24130 yqeH  
 OCPFDLNE\_01640 LMOSA\_25140 thil  
 OCPFDLNE\_01622 LMOSA\_24960 dnaE  
 OCPFDLNE\_02436 LMOSA\_2980 psuG  
 OCPFDLNE\_01334 LMOSA\_22110 parC  
 OCPFDLNE\_01538 LMOSA\_24120 aroE  
 OCPFDLNE\_02400 LMOSA\_2640 ABC-2.A  
 OCPFDLNE\_00006 LMOSA\_8290 gyrB  
 OCPFDLNE\_01723 LMOSA\_25980 menF  
 OCPFDLNE\_01378 LMOSA\_22540 pnp  
 OCPFDLNE\_01722 LMOSA\_25970 menD  
 OCPFDLNE\_01596 LMOSA\_24700 mreB  
 OCPFDLNE\_01333 LMOSA\_22100 parE  
 OCPFDLNE\_01561 LMOSA\_24350 iscS  
 OCPFDLNE\_01719 LMOSA\_25940 menE  
 OCPFDLNE\_02729 LMOSA\_5190 cpoA  
 OCPFDLNE\_01031 LMOSA\_18610 dltD  
 OCPFDLNE\_01276 LMOSA\_20980 mutS2  
 OCPFDLNE\_01367 LMOSA\_22430 polC  
 OCPFDLNE\_00255 LMOSA\_11340 ispF  
 OCPFDLNE\_01595 LMOSA\_24690 mreC  
 OCPFDLNE\_02018 LMOSA\_28640 recQ  
 OCPFDLNE\_01496 LMOSA\_23690 ppaC  
 OCPFDLNE\_02113 LMOSA\_240 murD  
 OCPFDLNE\_01921 LMOSA\_27680 pbuG  
 OCPFDLNE\_01275 LMOSA\_20970 polX  
 OCPFDLNE\_01452 LMOSA\_23250 mutL  
 OCPFDLNE\_01513 LMOSA\_23860 ybeY  
 OCPFDLNE\_00007 LMOSA\_8300 gyrA  
 OCPFDLNE\_00279 LMOSA\_11570 rpoB  
 OCPFDLNE\_01494 LMOSA\_23670 znuB  
 OCPFDLNE\_01589 LMOSA\_24630 ysxB  
 OCPFDLNE\_01573 LMOSA\_24470 recJ  
 OCPFDLNE\_00978 LMOSA\_18090 E3.2.1.86B  
 OCPFDLNE\_01404 LMOSA\_22780 accC  
 OCPFDLNE\_01818 LMOSA\_26670 ABC.CD.P  
 OCPFDLNE\_02106 LMOSA\_170 yggT  
 OCPFDLNE\_00320 LMOSA\_12030 celB  
 OCPFDLNE\_02249 LMOSA\_820 fruK  
 OCPFDLNE\_02495 LMOSA\_3490 mnhD1  
 OCPFDLNE\_01601 LMOSA\_24750 hemL  
 OCPFDLNE\_01078 LMOSA\_19070 proW  
 OCPFDLNE\_02560 LMOSA\_4160 yvaK  
 OCPFDLNE\_01560 LMOSA\_24340 mnmA  
 OCPFDLNE\_00260 LMOSA\_11390 rlmB  
 OCPFDLNE\_01530 LMOSA\_24040 comEC  
 OCPFDLNE\_01318 LMOSA\_21950 lepB  
 OCPFDLNE\_02115 LMOSA\_260 murE  
 OCPFDLNE\_02559 LMOSA\_4150 rnr  
 OCPFDLNE\_01578 LMOSA\_24520 tgt  
 OCPFDLNE\_01975 LMOSA\_28220 dinG  
 OCPFDLNE\_01032 LMOSA\_18620 dltC  
 OCPFDLNE\_01320 LMOSA\_21970 rnhB

# 200 MPa Cluster of interest 3

## RO15

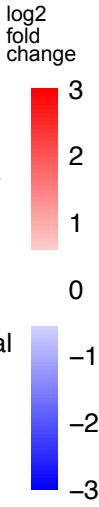
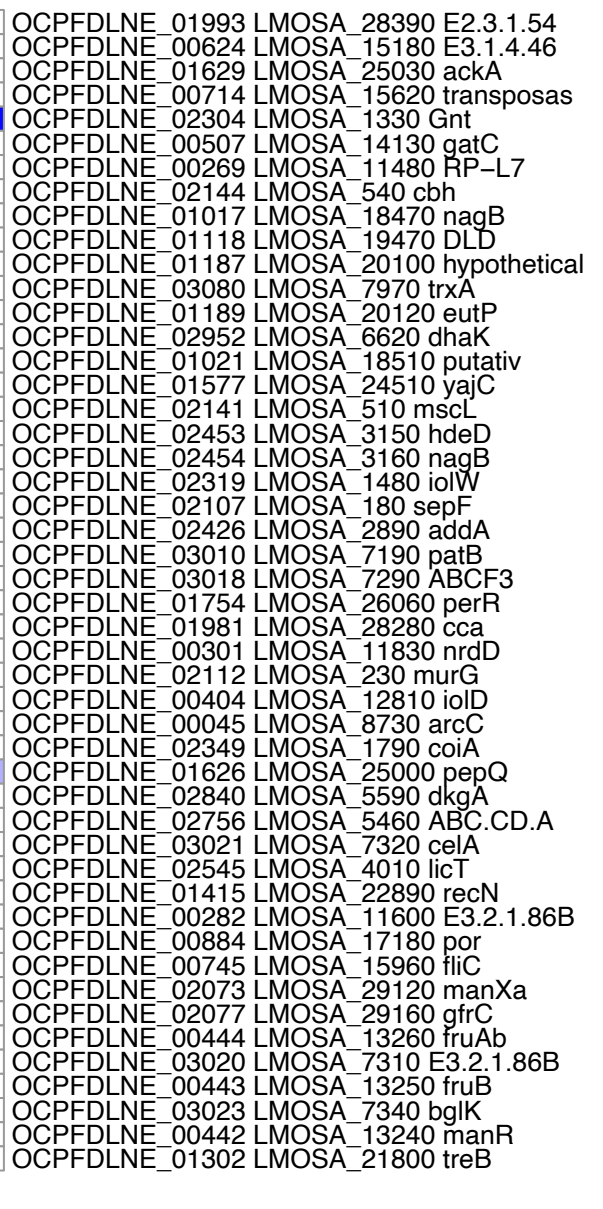
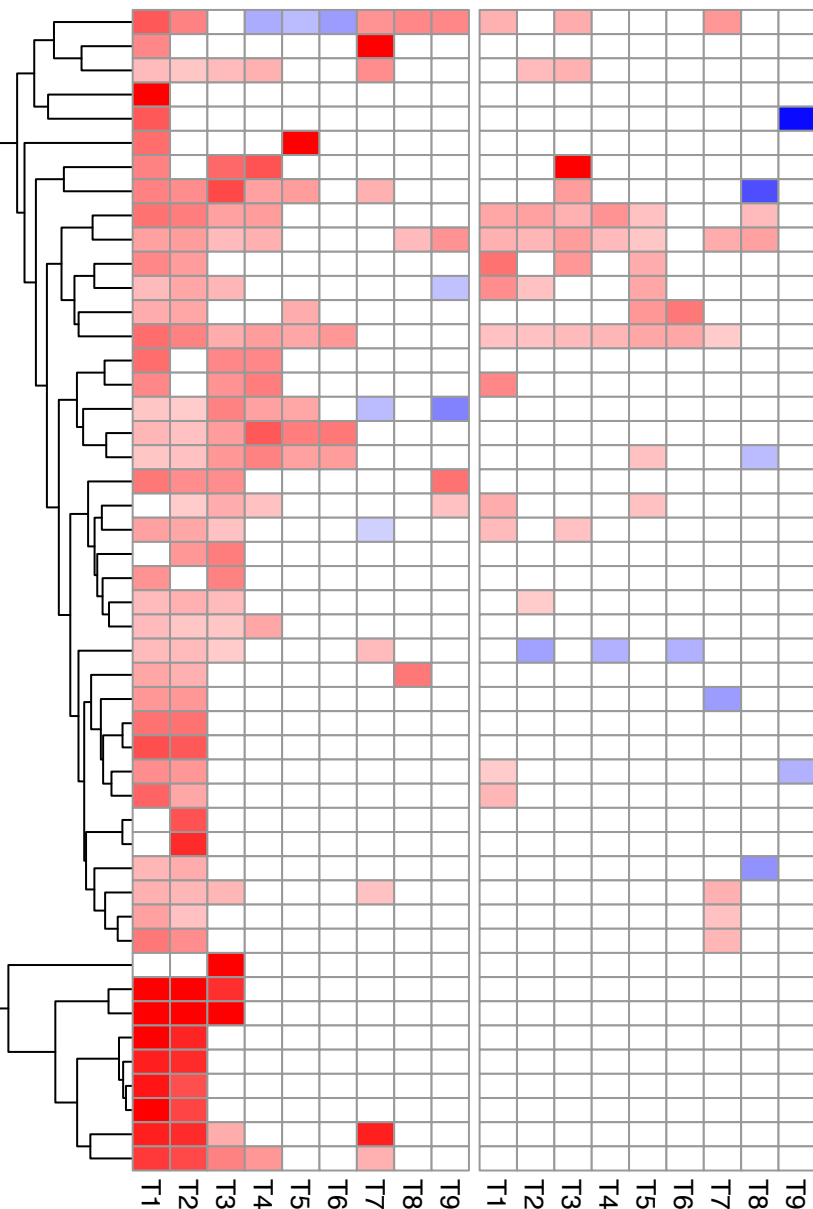
## ScottA



# 200 MPa Cluster of interest 4

## RO15

## ScottA



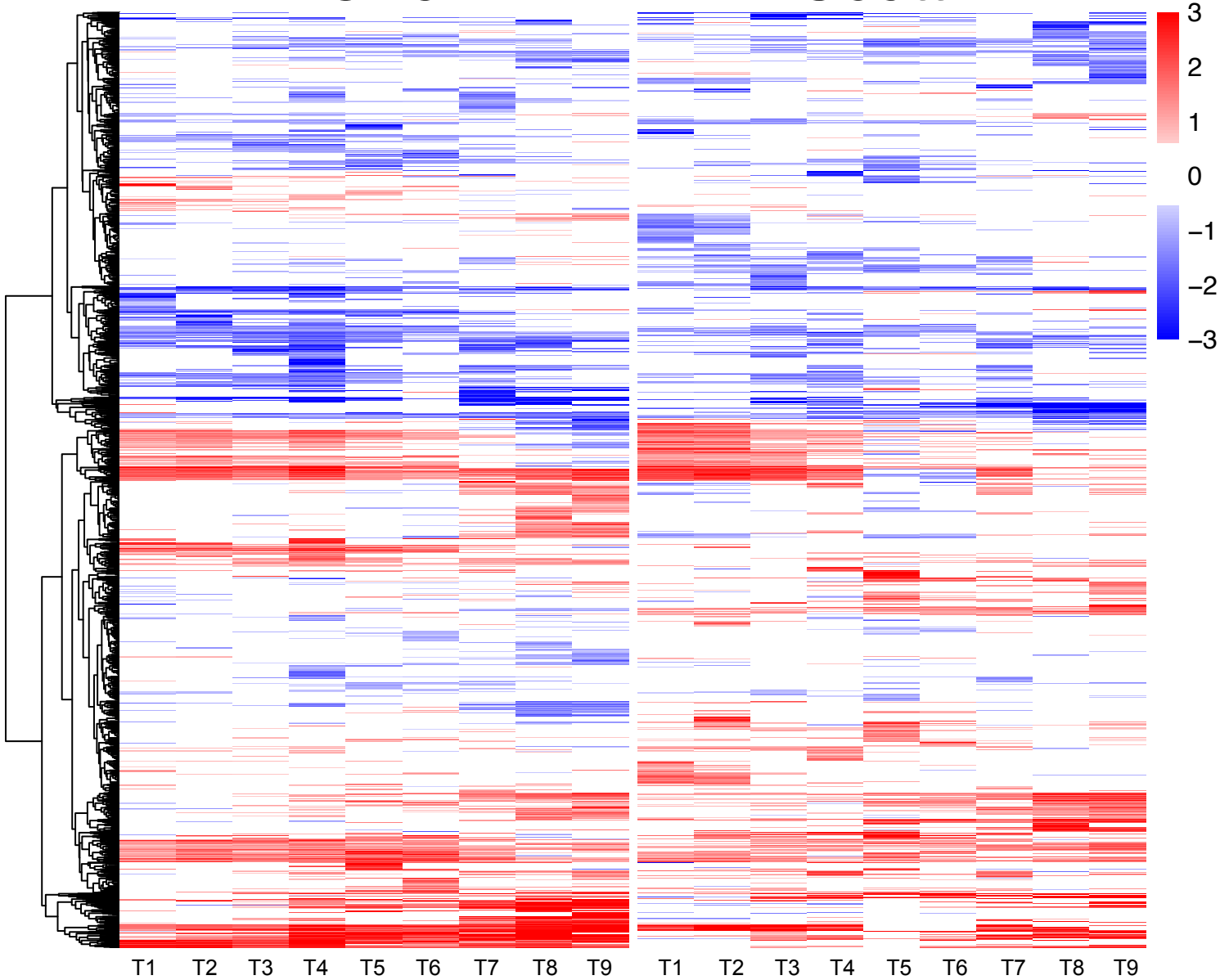
- OCPFDLNE\_01993 LMOSA\_28390 E2.3.1.54
- OCPFDLNE\_00624 LMOSA\_15180 E3.1.4.46
- OCPFDLNE\_01629 LMOSA\_25030 ackA
- OCPFDLNE\_00714 LMOSA\_15620 transposas
- OCPFDLNE\_02304 LMOSA\_1330 Gnt
- OCPFDLNE\_00507 LMOSA\_14130 gatC
- OCPFDLNE\_00269 LMOSA\_11480 RP-L7
- OCPFDLNE\_02144 LMOSA\_540 cbh
- OCPFDLNE\_01017 LMOSA\_18470 nagB
- OCPFDLNE\_01118 LMOSA\_19470 DLD
- OCPFDLNE\_01187 LMOSA\_20100 hypothetical
- OCPFDLNE\_03080 LMOSA\_7970 trxA
- OCPFDLNE\_01189 LMOSA\_20120 eutP
- OCPFDLNE\_02952 LMOSA\_6620 dhaK
- OCPFDLNE\_01021 LMOSA\_18510 putativ
- OCPFDLNE\_01577 LMOSA\_24510 yajC
- OCPFDLNE\_02141 LMOSA\_510 mscL
- OCPFDLNE\_02453 LMOSA\_3150 hdeD
- OCPFDLNE\_02454 LMOSA\_3160 nagB
- OCPFDLNE\_02319 LMOSA\_1480 iolW
- OCPFDLNE\_02107 LMOSA\_180 sepF
- OCPFDLNE\_02426 LMOSA\_2890 addA
- OCPFDLNE\_03010 LMOSA\_7190 patB
- OCPFDLNE\_03018 LMOSA\_7290 ABCF3
- OCPFDLNE\_01754 LMOSA\_26060 perR
- OCPFDLNE\_01981 LMOSA\_28280 cca
- OCPFDLNE\_00301 LMOSA\_11830 nrdD
- OCPFDLNE\_02112 LMOSA\_230 murG
- OCPFDLNE\_00404 LMOSA\_12810 iolD
- OCPFDLNE\_00045 LMOSA\_8730 arcC
- OCPFDLNE\_02349 LMOSA\_1790 coiA
- OCPFDLNE\_01626 LMOSA\_25000 pepQ
- OCPFDLNE\_02840 LMOSA\_5590 dkgA
- OCPFDLNE\_02756 LMOSA\_5460 ABC.CD.A
- OCPFDLNE\_03021 LMOSA\_7320 celA
- OCPFDLNE\_02545 LMOSA\_4010 licT
- OCPFDLNE\_01415 LMOSA\_22890 recN
- OCPFDLNE\_00282 LMOSA\_11600 E3.2.1.86B
- OCPFDLNE\_00884 LMOSA\_17180 por
- OCPFDLNE\_00745 LMOSA\_15960 fliC
- OCPFDLNE\_02073 LMOSA\_29120 manXa
- OCPFDLNE\_02077 LMOSA\_29160 gfrC
- OCPFDLNE\_00444 LMOSA\_13260 fruAb
- OCPFDLNE\_03020 LMOSA\_7310 E3.2.1.86B
- OCPFDLNE\_00443 LMOSA\_13250 fruB
- OCPFDLNE\_03023 LMOSA\_7340 bglK
- OCPFDLNE\_00442 LMOSA\_13240 manR
- OCPFDLNE\_01302 LMOSA\_21800 treB

T1 T2 T3 T4 T5 T6 T7 T8 T9 T1 T2 T3 T4 T5 T6 T7 T8 T9

# 400 MPa All DE Genes

## RO15

## ScottA





# 400 MPa Cluster of interest 2

## RO15

## ScottA

