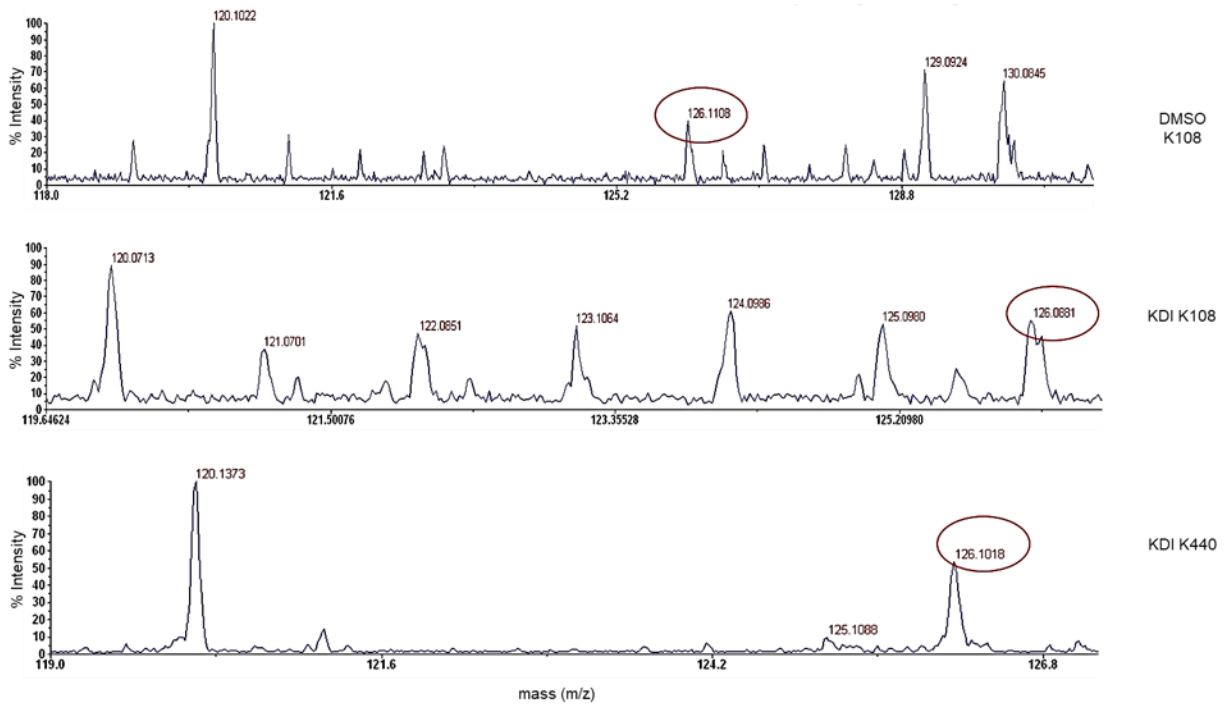


Fig. S2



Supplementary Figure S2: Aromatase peptides are acetylated in MCF-7 cells. LC-MS/MS spectra of basally acetylated aromatase at position K108 (DMSO K108) and SIRT-1 inhibitor IV Induced acetylation at position K108 (KDI K108) and K440 (KDI K440). Peptides show immonium ion peaks at mass to charge (m/z) ratio of ~126 at different intensities, indicating the presence of acetylated lysines at K108 and K440