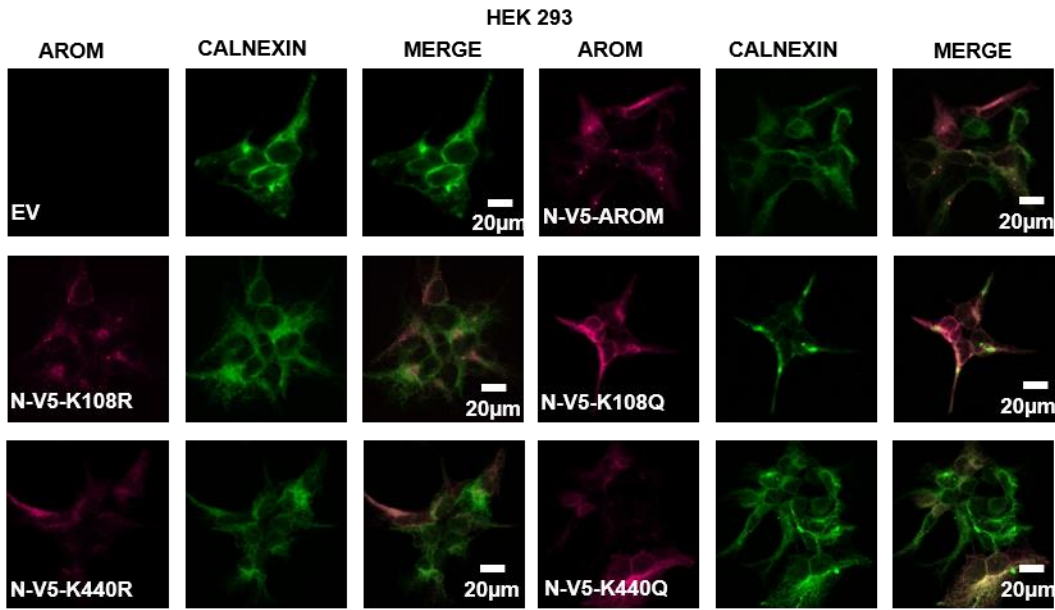


Fig. S3



**Supplementary Figure S3: V5-tagged aromatase protein colocalizes with endoplasmic reticulum marker calnexin in stably transfected HEK293 cells.** Representative fluorescence images of V5-aromatase (AROM, magenta) and calnexin (CAL, green) in stably transfected HEK293 cells with empty vector (EV), N-V5-tagged aromatase (N-V5-AROM), K108R mutant (N-V5-K108R), K108Q mutant (N-V5-K108Q), K440R mutant (N-V5-K440R) and K440Q mutant (N-V5-K440Q) proteins are shown. The merge images represent an overlap of nuclear staining with N-V5-Aromatase (magenta) and calnexin (green) proteins.