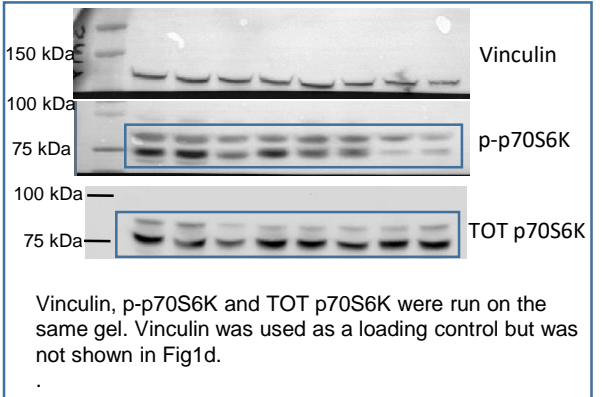
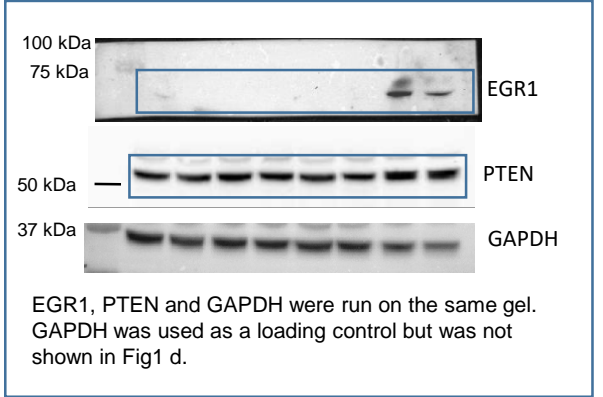
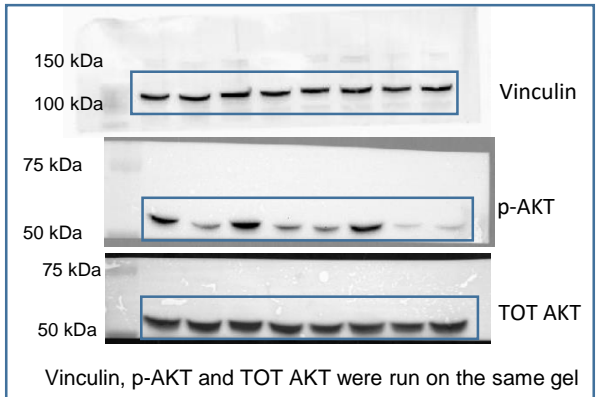


Supplementary information

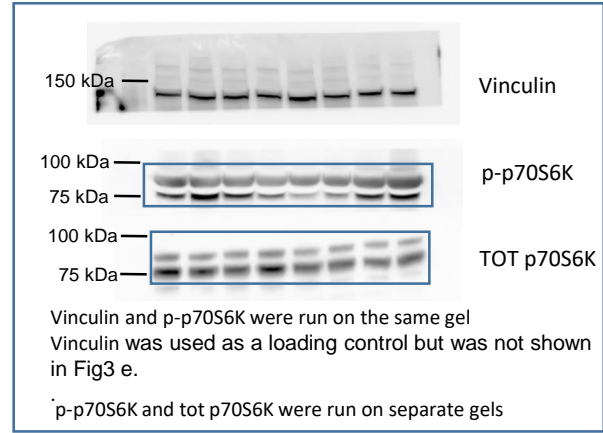
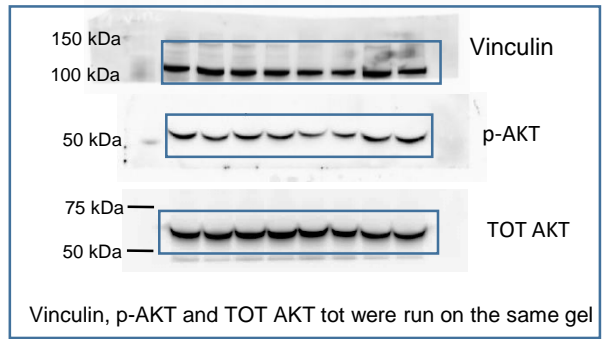
Fasting-mimicking diet and hormone therapy induce breast cancer regression

In the format provided by the authors and unedited

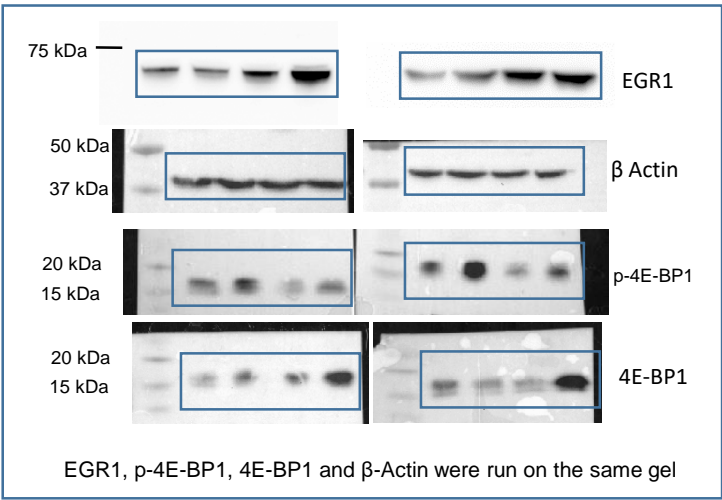
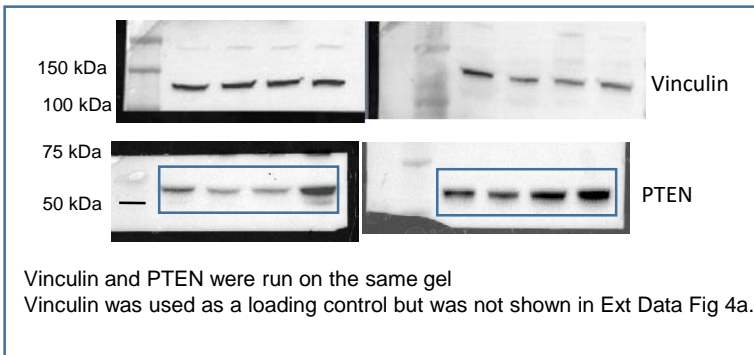
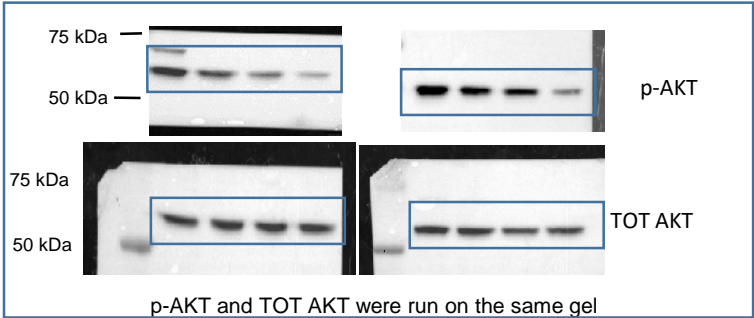
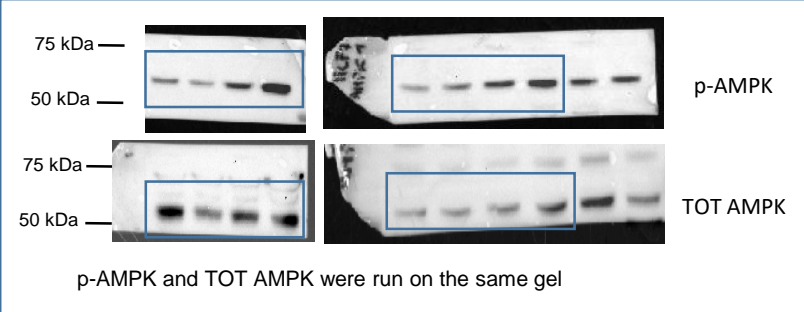
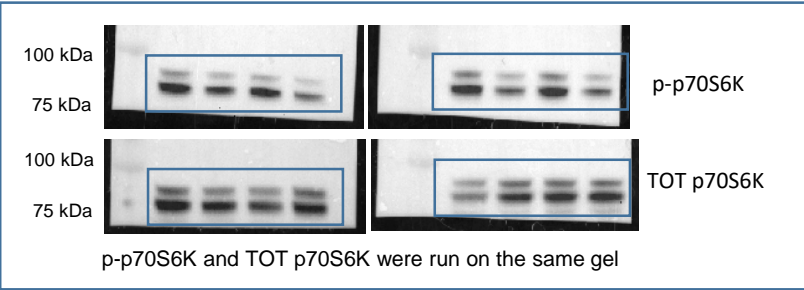
Source data for Fig. 1d



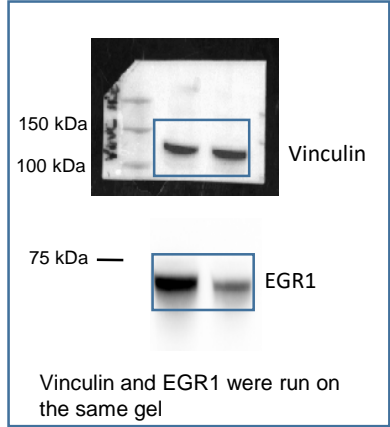
Source data for Ext data Fig. 3e



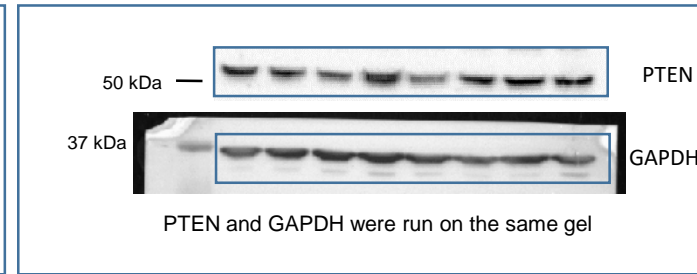
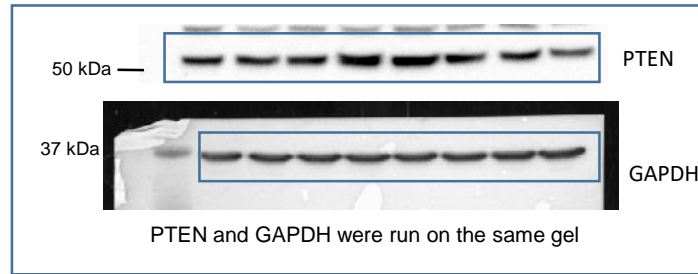
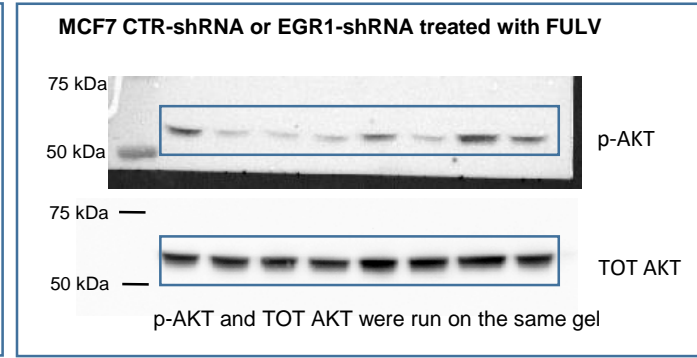
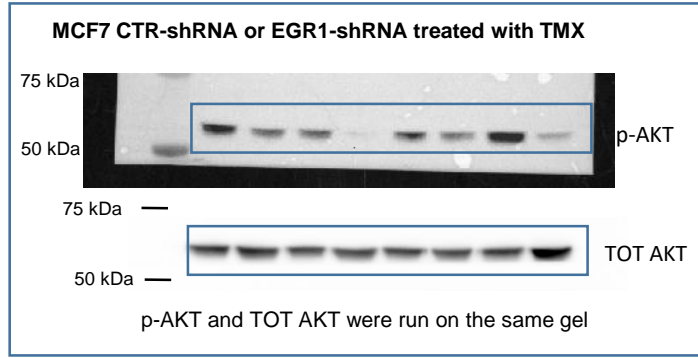
Source data for Ext Data Fig 4 A



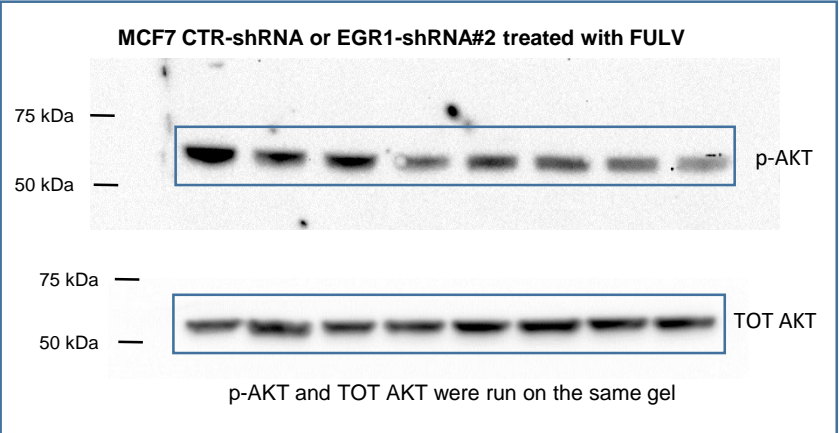
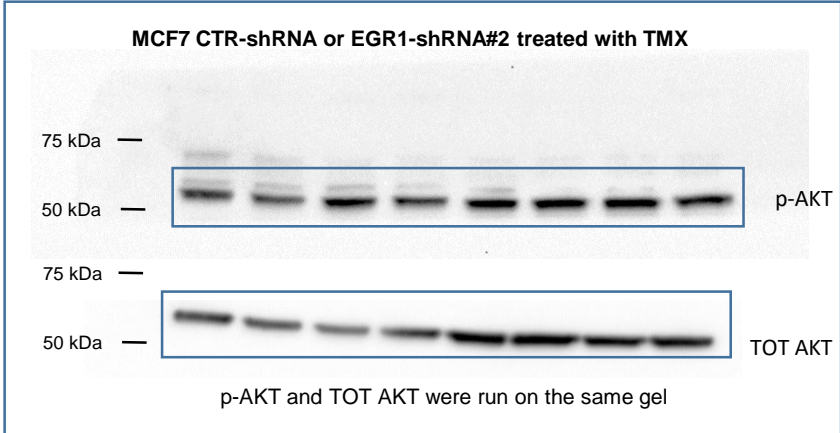
Source data for Ext Data Fig 5 a



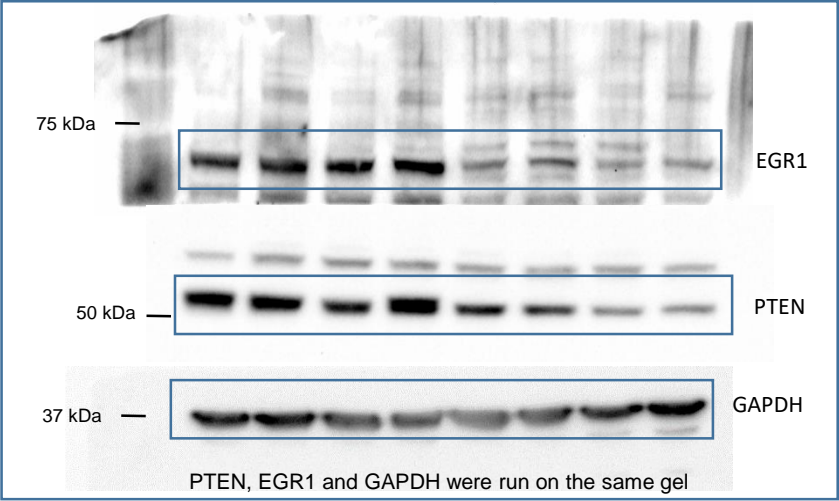
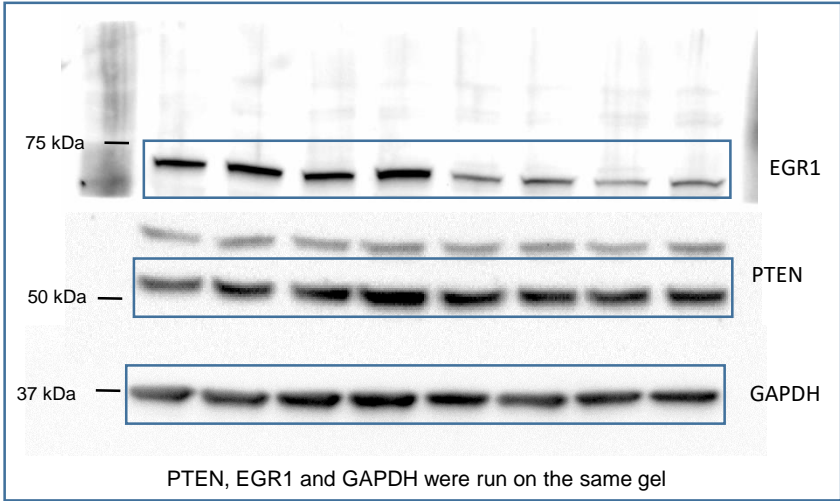
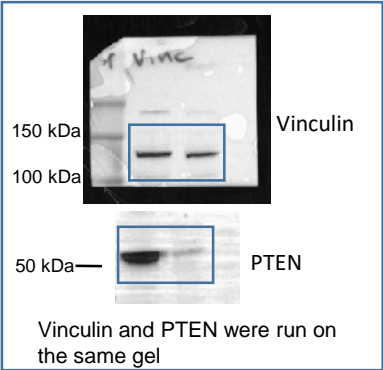
Source data for Ext Data Fig 5 b



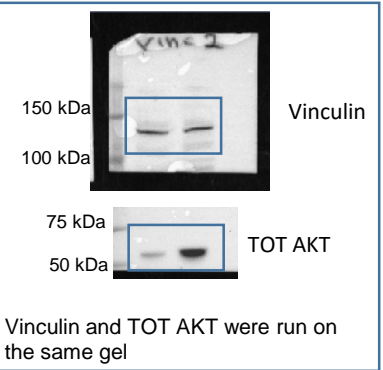
Source data for Ext Data Fig 5 c



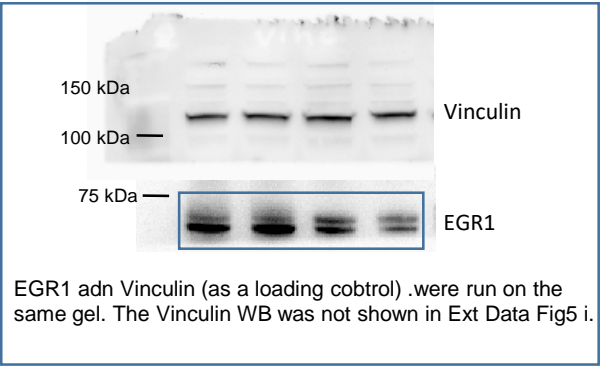
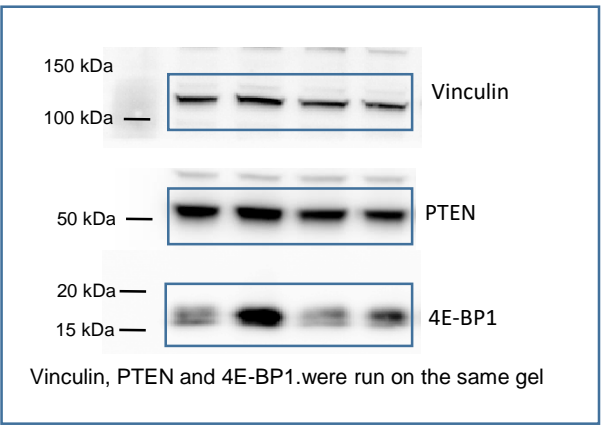
Source data for Ext Data Fig 5 g



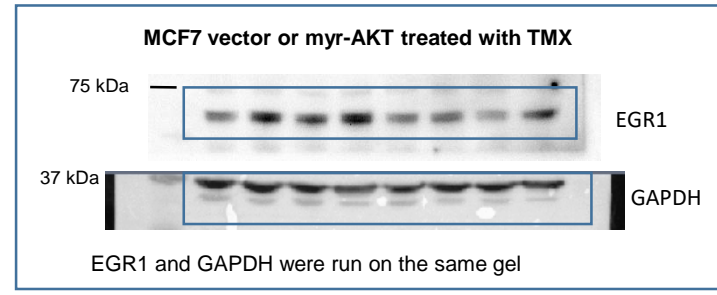
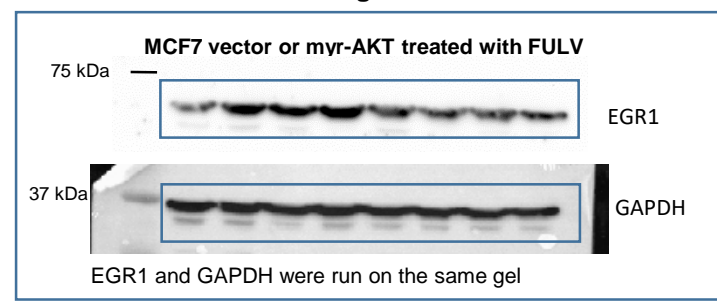
Source data for Ext Data Fig 5 h



Source data for Ext Data Fig 5 i

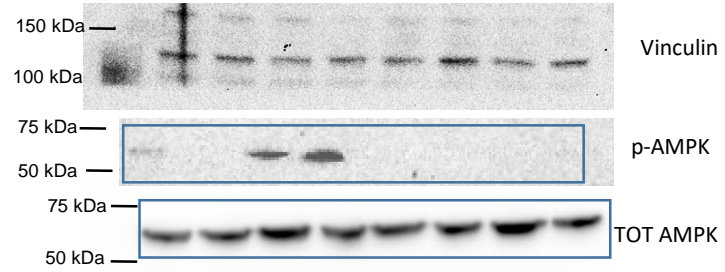


Source data for Ext Data Fig 5 I



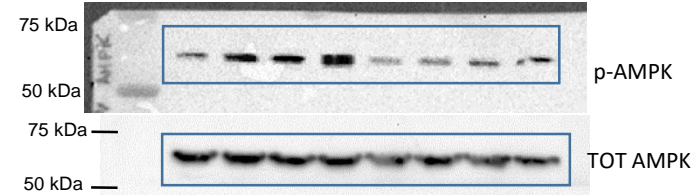
Source data for Ext Data Fig 6 a

MCF7 CTR-shRNA or PTEN-shRNA treated with FULV



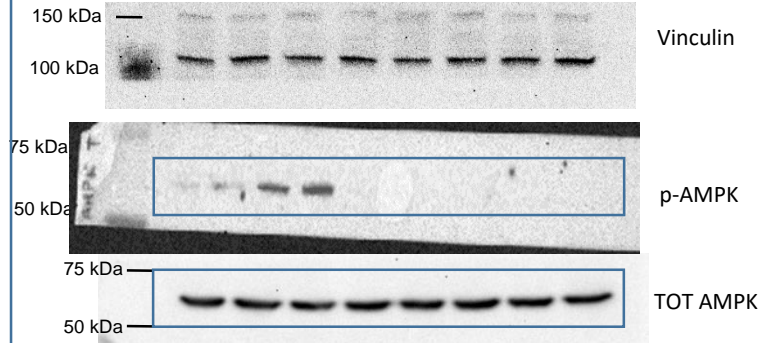
p-AMPK, TOT AMPK and Vinculin were run on the same gel.
Vinculin was used as a loading control but was not shown in Ext Data Fig. 6a

MCF7 vector or myr-AKT treated with FULV



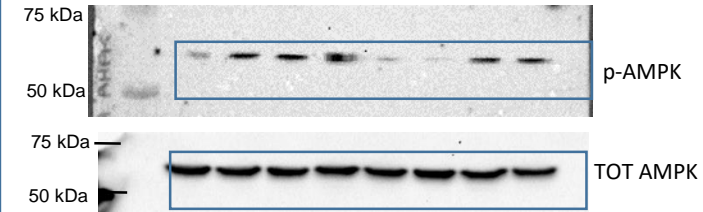
p-AMPK and TOT AMPK were run on the same gel
The GAPDH loading control for this gel was already shown in Ext Data Fig. 5I

MCF7 CTR-shRNA or PTEN-shRNA treated with TMX



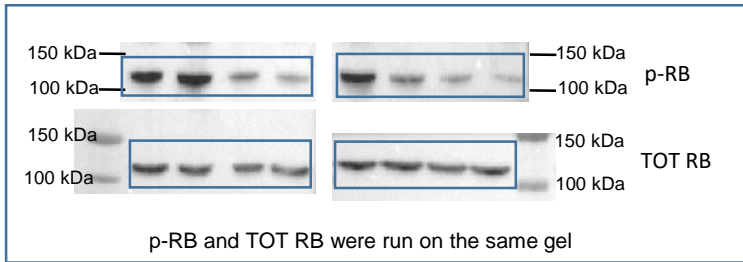
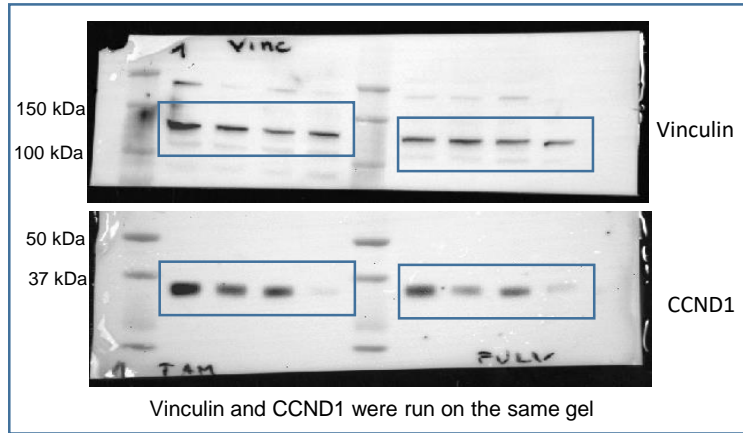
p-AMPK, TOT AMPK and Vinculin were run on the same gel.
Vinculin was used as a loading control but was not shown in Ext Data Fig. 6a

MCF7 vector or myr-AKT treated with TMX

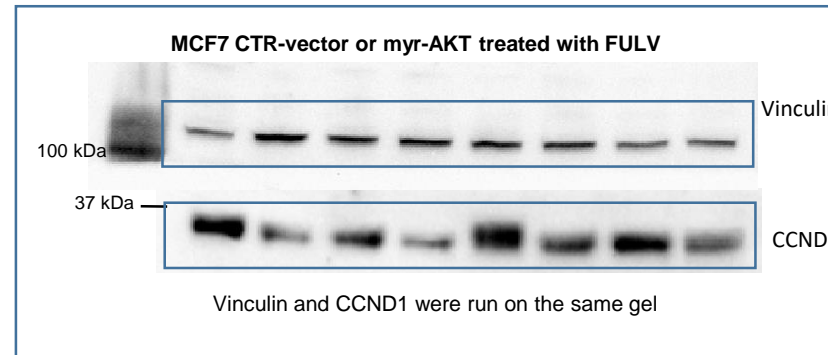


p-AMPK and TOT AMPK were run on the same gel
The GAPDH loading control for this gel was already shown in Ext Data Fig. 5I

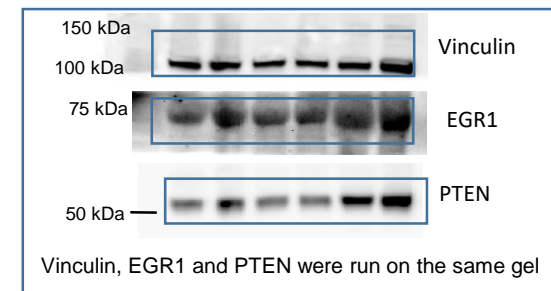
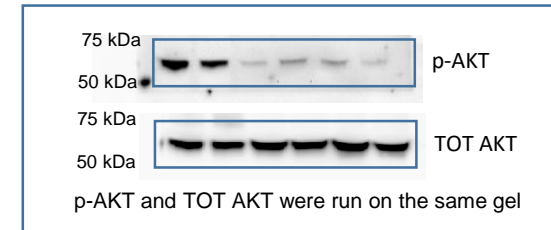
Source data for Ext Data Fig 7 e



Source data for Ext Data Fig 8 c



Source data for Ext Data Fig 9 d



Source data for Ext Data Fig 7 f

