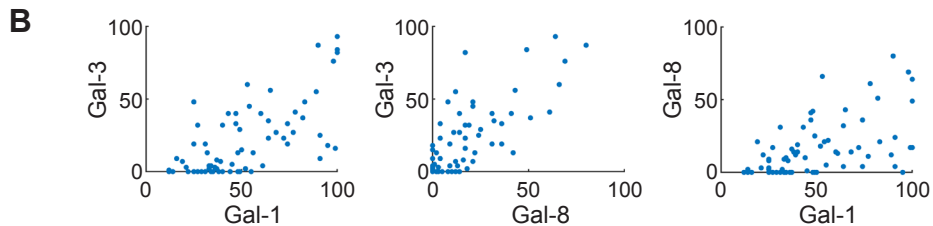
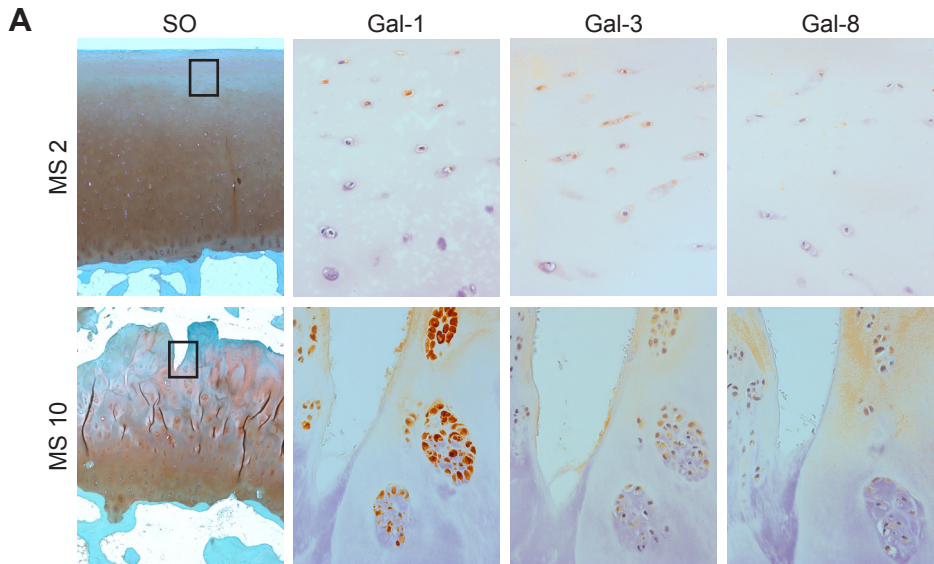


# Supplemental file 4.



**C**

	Spearman	p-value
Gal-1 vs. Gal-3	0.66	$6.7 \times 10^{-10}$
Gal-1 vs. Gal-8	0.56	$3.5 \times 10^{-7}$
Gal-3 vs. Gal-8	0.72	$3.4 \times 10^{-12}$