

Figure S1. Silencing of FASN increased cleaved caspase-3 protein in diffuse large B-cell lymphoma cells. Expression of cleaved caspase-3 protein in SU-DHL-2 and U2932 cells transfected with siRNA targeting FASN and non-targeting control for 2 days. β -actin was used as a loading control. siRNA, small interfering RNA; FASN, fatty acid synthase.

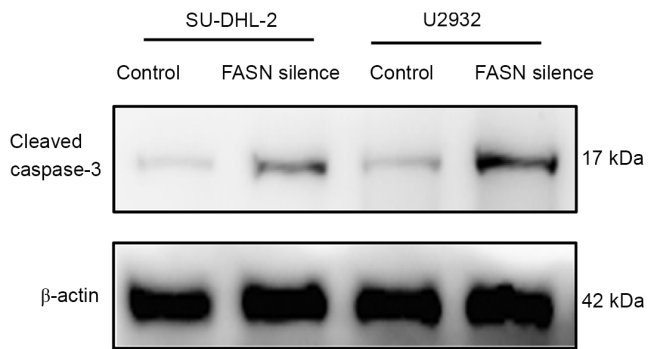


Table SI. Multivariable Cox Regression analysis of ten factors.

	P value	HR (95.0% CI)
Ann Arbor stage	0.650	0.759 (0.23-2.503)
BM involvement +	0.559	1.381 (0.468-4.078)
CNS involvement +	0.214	2.403 (0.604-9.568)
Elevated LDH	0.020*	5.308 (1.302-21.635)
B symptom	0.366	1.684 (0.543-5.222)
MYC+BCL-2+(DEL)	0.010*	9.998 (1.734-57.658)
MYC+	0.706	0.723 (0.134-3.891)
ENS >2	0.643	1.466 (0.291-7.388)
IPI score ≥ 3	0.767	1.317 (0.213-8.137)
PS score >1	0.404	1.502 (0.578-3.905)

We included and analyzed ten factors that had significant differences from univariate analysis(Kaplan-Meier) and performed multivariate analysis(Cox Regression). Results showed that elevated LDH and co-expression of MYC and BCL-2 are independent factors that influences the prognosis and survival.
