

## **Supplementary methods**

### **Immunohistochemistry**

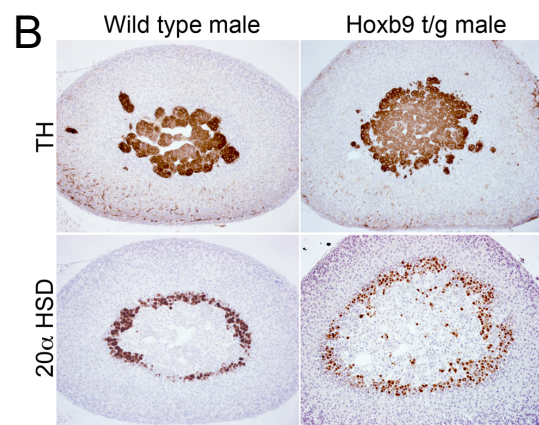
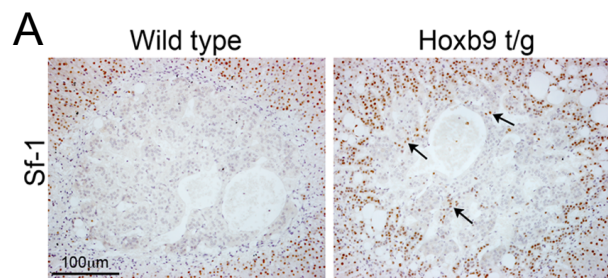
Mouse tissues were fixed overnight in 4% paraformaldehyde (PFA), dehydrated in an ethanol gradient series, washed in HistoClear and embedded in wax. Sections were cut at 4  $\mu$ m, rehydrated and antigen retrieval was obtained by gently boiling sections for 20 minutes in the appropriate buffer, see below, and then cooled. Sections were treated with 3% H<sub>2</sub>O<sub>2</sub> to block endogenous peroxidase activity, washed with PBS and blocked in 10% sheep serum. Primary antibodies in 2.5% horse serum were incubated overnight at 4°C. Anti-mouse or anti-rabbit ImmPRESS HRP detection kits (Vector Laboratories), or anti-sheep VisUCyte HRP detection reagent (Bio-Techne) were used according to manufacturer's instructions. Staining was carried out using DAB chromogen (Sigma) and sections were counterstained with haematoxylin. For all stains, sections were processed from at least three animals of each genotype. The following antibodies were processed for antigen retrieval in citrate buffer (0.1 M sodium citrate pH6, 0.05% Tween); Ki67 (Abcam ab16667), Hoxb9 (Santa Cruz sc-398500), Sf-1 (Abcam ab65815), DAB2 (BD Transduction Labs 610464), Tyrosine Hydroxylase (Merck AB152), 20 $\alpha$  HSD (a kind gift from Yacob Weinstein),  $\beta$ -catenin (BD Transduction Labs 610153), Lef1 (Cell Signalling Technology 2230), cleaved Caspase 3 (Abcam ab2302), Fosb (Cell Signalling Technology 2251). Antigen retrieval for Cyp11b1 (2625, a kind gift from Celso Gomez-Sanchez) and Cyp11b2 (2084, a kind gift from Celso Gomez-Sanchez) antibodies was 1 mM EDTA, 10 mM Diethanolamine pH 9.

### **Taqman gene expression probes**

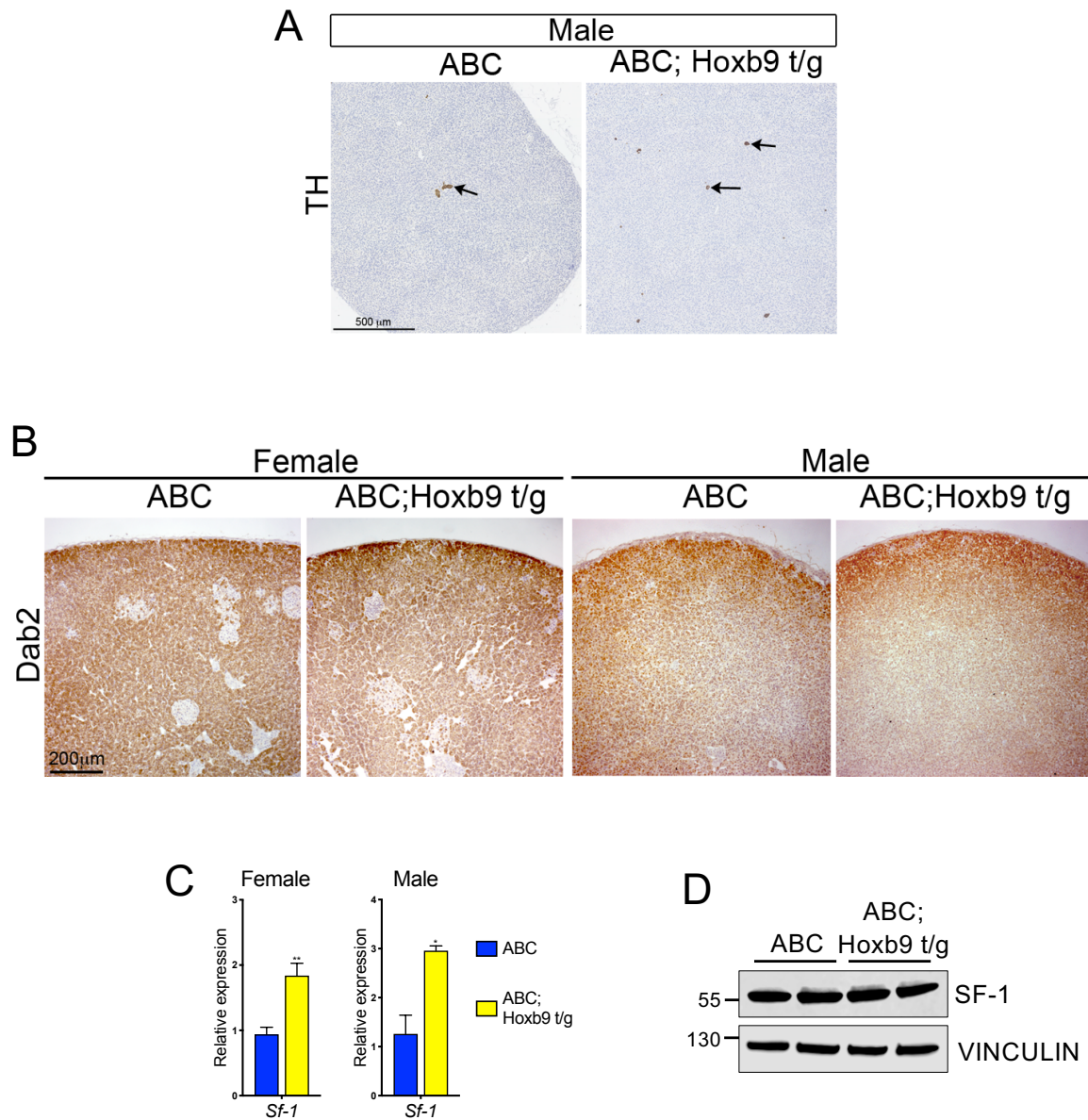
Gapdh Mm99999915\_g1, Hoxb9 Mm01700220\_m1, Sf-1/Nr5a1 Mm00446826\_m1, Shh Mm00436528\_m1, Ptch1 Mm00436026\_m1, Axin2 Mm00443610\_m1, Cyp11b1

Mm01204952\_m1, Cyp11b2 Mm01204955\_g1, Akr1c18 Mm00506289\_m1, Pik3c2g  
Mm00440781\_m1, Cdk1 Mm00772472\_m1, Ccnb1 Mm03053893\_gH, Ccnb2  
Mm01171453\_m1, Ccne1 Mm01266311\_m1, Knstrn Mm00518200\_m1, Fos  
Mm00487425\_m1, Fosb Mm00500401\_m1, JunB Mm00492781\_s1, GAPDH  
Hs03929097\_g1, PBX1 Hs00231228\_m1, HOXA10 Hs00538183\_m1, HOXA11  
Hs00194149\_m1, HOXA13 Hs00426284\_m1, LEF1 Hs01547250\_m1, AXIN2  
Hs00610344\_m1.

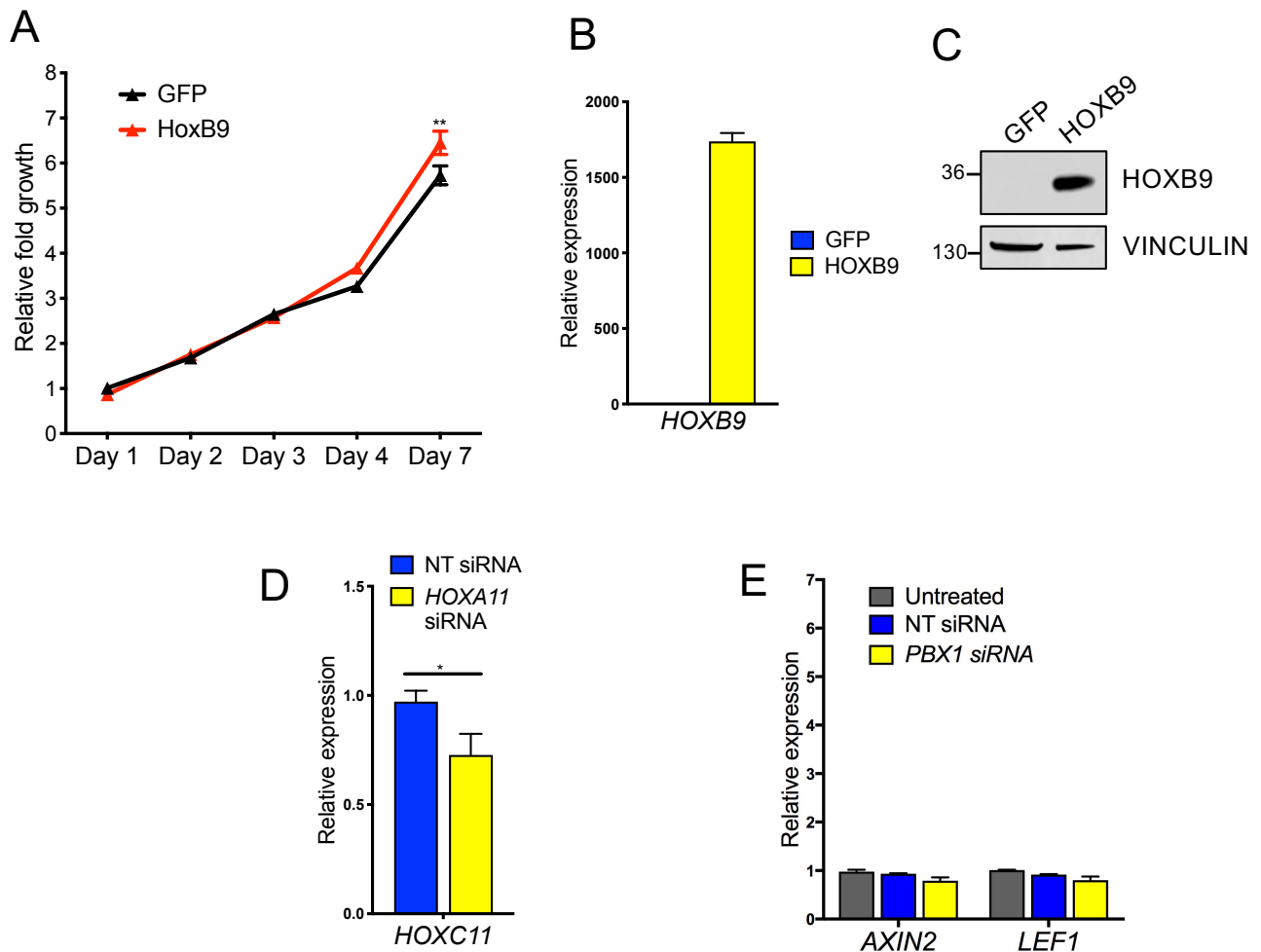




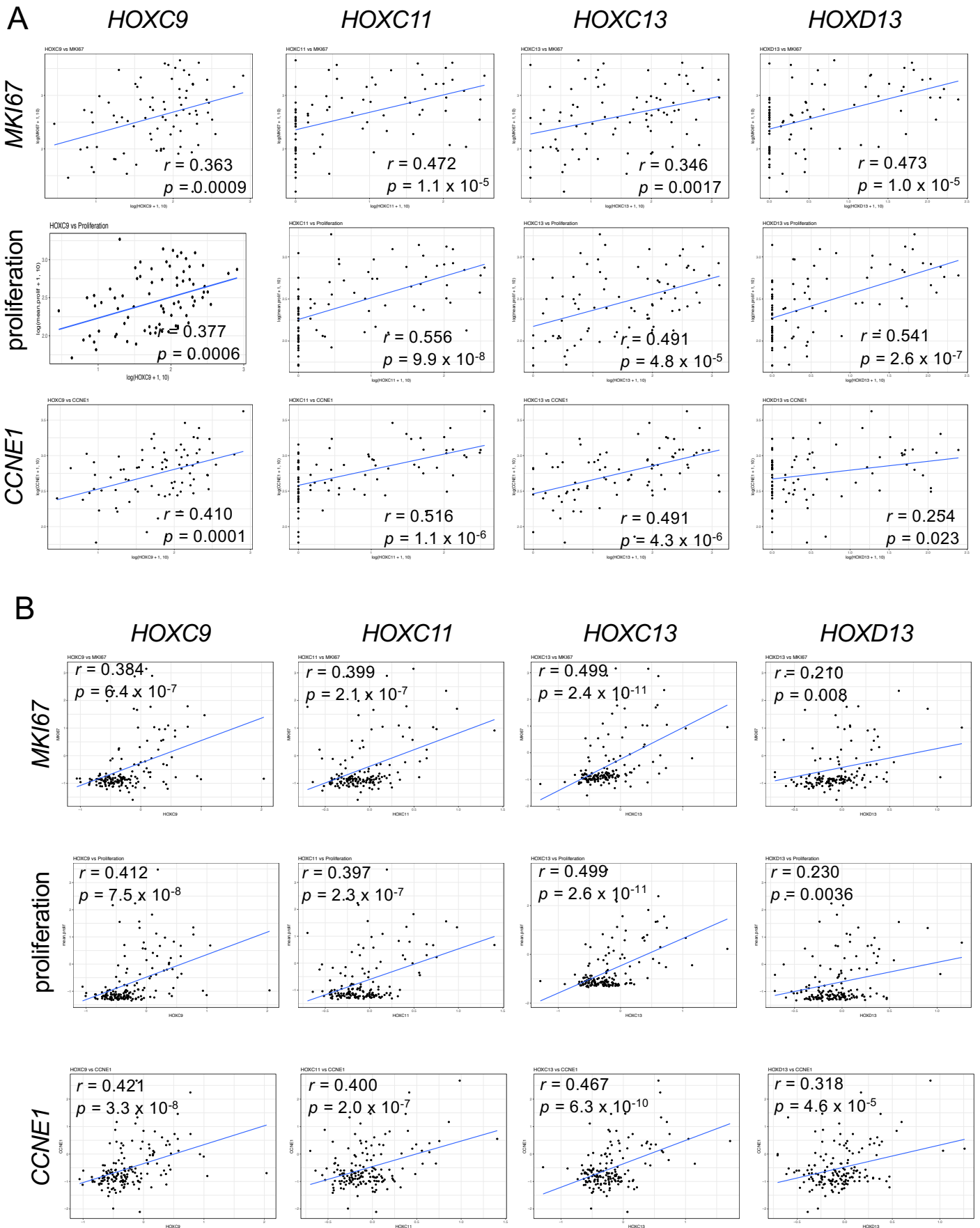
**Figure S2.** (A) Sf-1 IHC stain on sections of wild type and Hoxb9 t/g female adrenals from 3-month-old animals. Arrows indicate positive cells in the medulla. (B) TH and 20 $\alpha$ -HSD IHC stains on sections of wild type and Hoxb9 t/g male adrenal glands from 3-week-old animals.



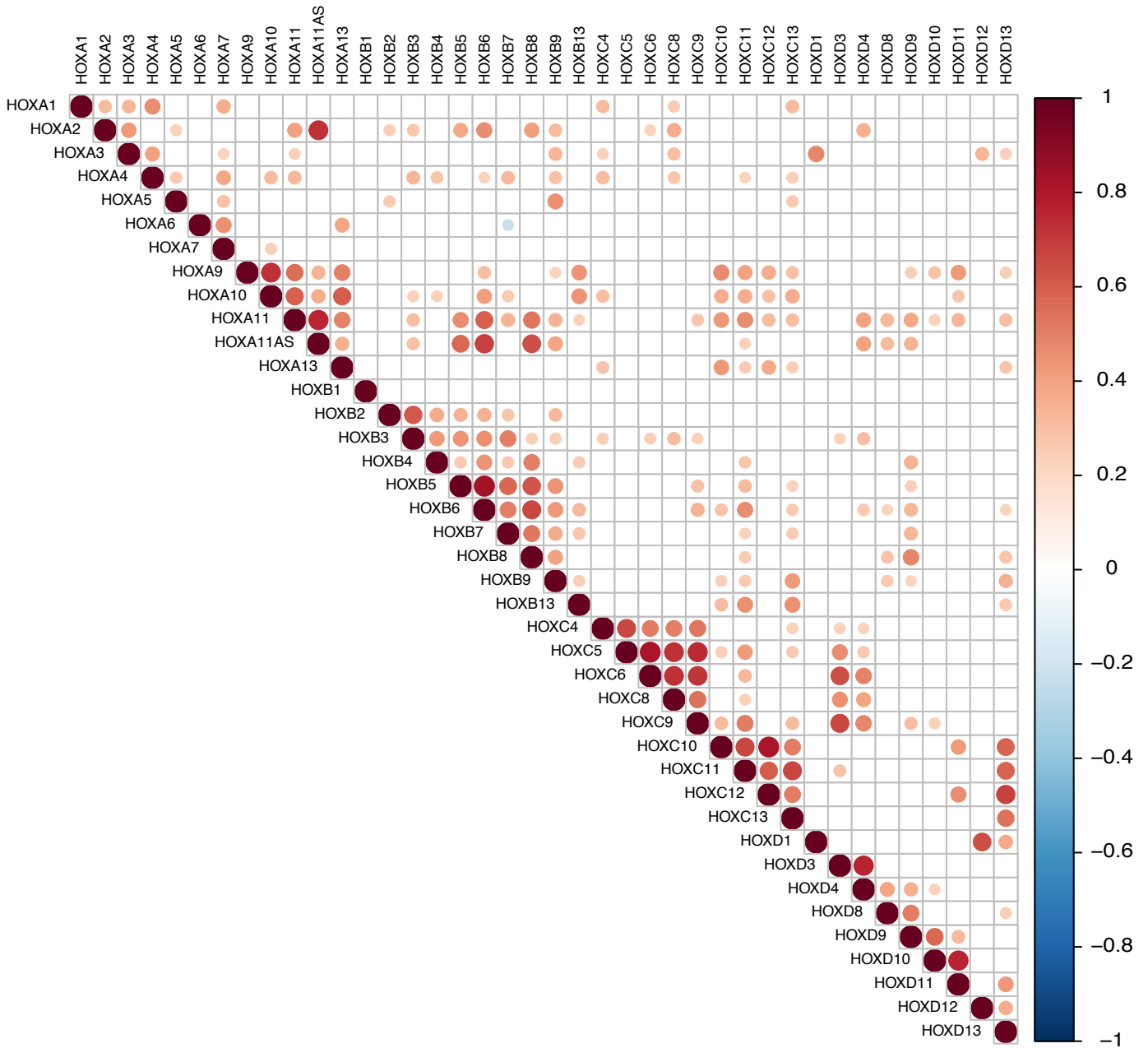
**Figure S3.** (A) Medulla marker TH stains on sections of ABC and ABC; Hoxb9 t/g male 3-month-old adrenal tumours. Arrows indicate few positive cells in these tumours. (B) ZG marker Dab2 stains on sections of ABC and ABC; Hoxb9 t/g 3-month-old adrenals showing expression throughout the tumours. (C) qRT-PCR of *Sf-1* on ABC and ABC; Hoxb9 t/g adrenal tumours. The data represent mean  $\pm$  SD from three biological repeats. Students t-test, \*\*  $p < 0.01$ , \*  $p < 0.05$ . (D) Western blot analysis of SF-1 on ABC and ABC; Hoxb9 t/g adrenal tumours from female animals. Adrenals from 2 animals of each genotype are shown. Vinculin is used as a loading control. ABC indicates *Ctnnb1* mutant tumours, ABC; Hoxb9 t/g indicates double mutant tumours.



**Figure S4.** (A) Growth curve of H295R cells expressing GFP or HOXB9. The data represent mean  $\pm$  SD from three biological repeats. One-way ANOVA, \*\*  $p < 0.01$ . (B) qRT-PCR of *HOXB9* in H295R cells expressing GFP or HOXB9. (C) Western blot analysis of HOXB9 in H295R cells expressing GFP or HOXB9. Vinculin is used as a loading control. (D) qRT-PCR of *HOXC11* in H295R cells treated with a NT siRNA or an siRNA targeting *HOXA11*. \*  $p < 0.05$ . (E) qRT-PCR of *AXIN2* and *LEF1* in H295R cells untreated, treated with a NT siRNA or an siRNA targeting *PBX1*. The data represent mean  $\pm$  SD from three biological repeats.

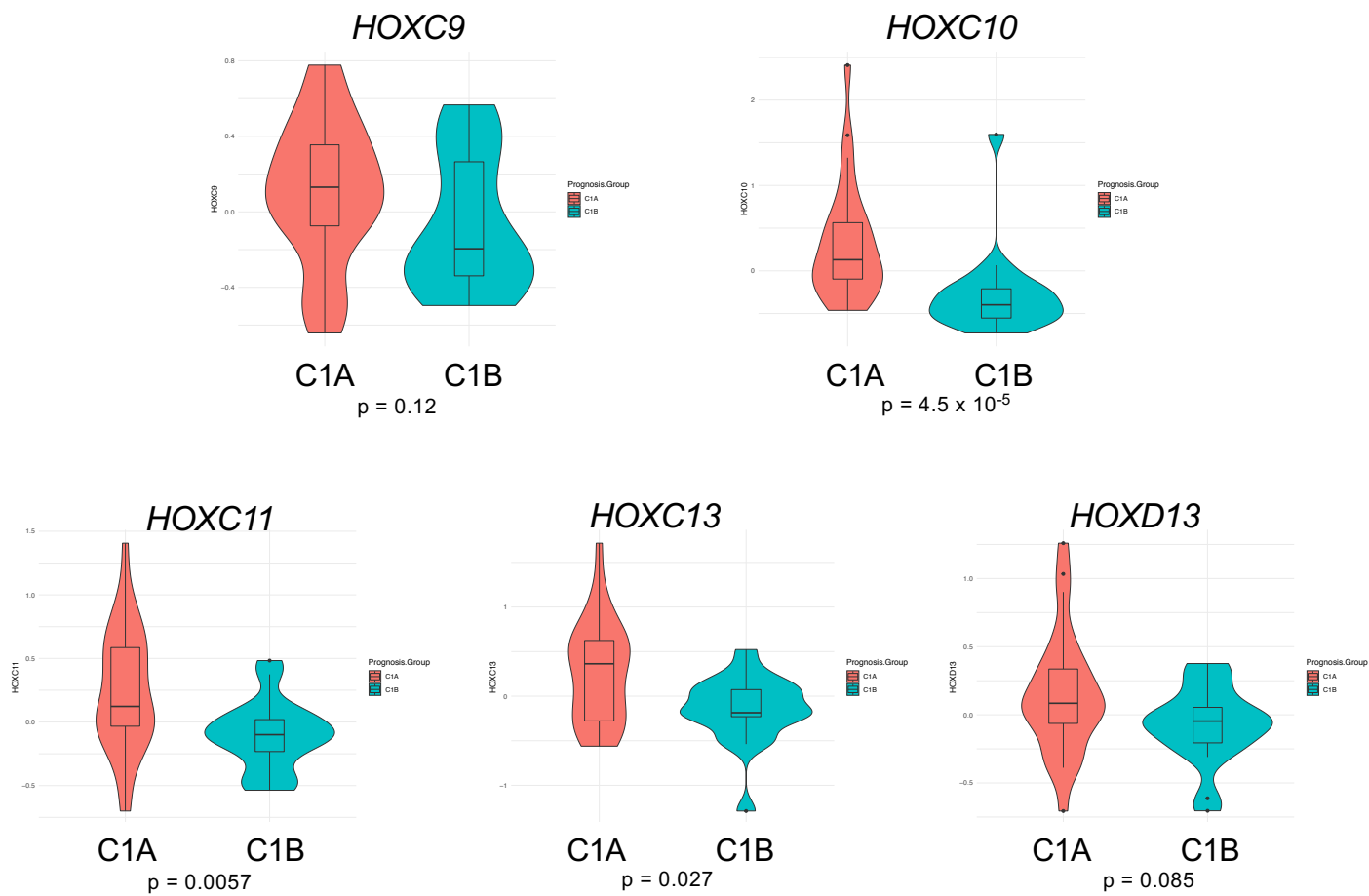


**Figure S5.** (A) TCGA cohort HOX gene correlations with *MKI67*, the proliferation gene signature and *CCNE1*. (B) Cochin cohort HOX gene correlations with *MKI67*, the proliferation gene signature and *CCNE1*.



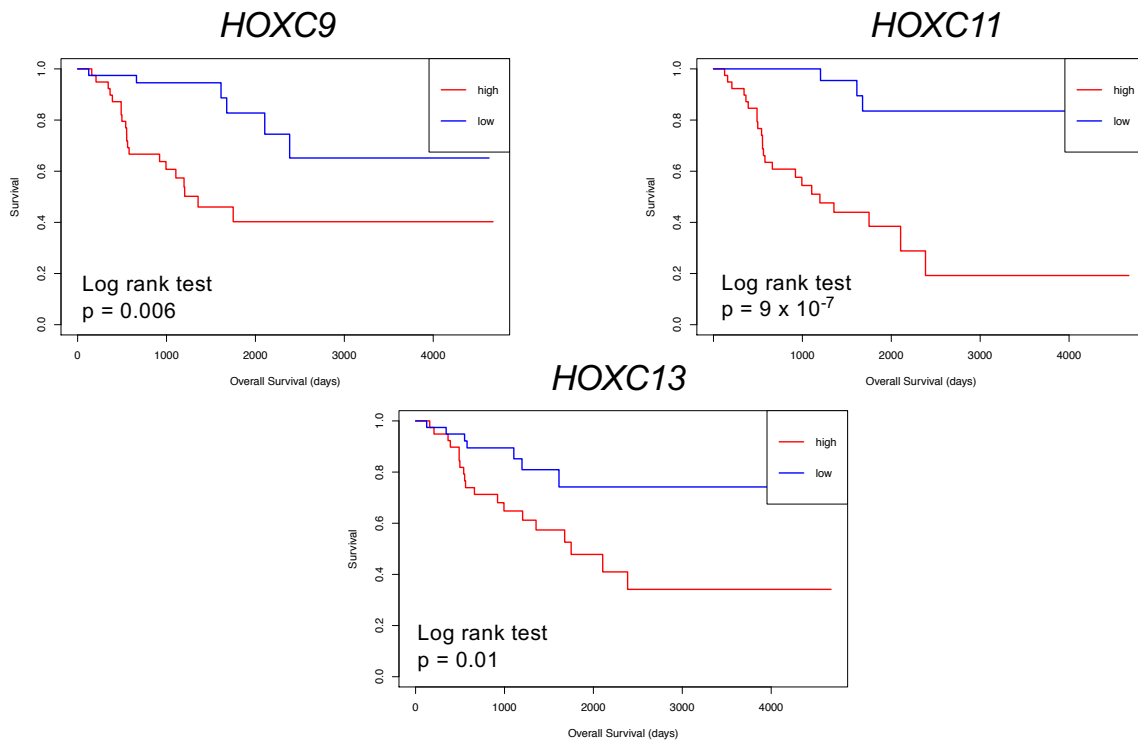
**Figure S6.** Correlogram of HOX gene expression correlation with the expression of other HOX genes in ACC TCGA patient samples. Colour scale is the correlation  $r$  value and spot size is the  $p$  value.



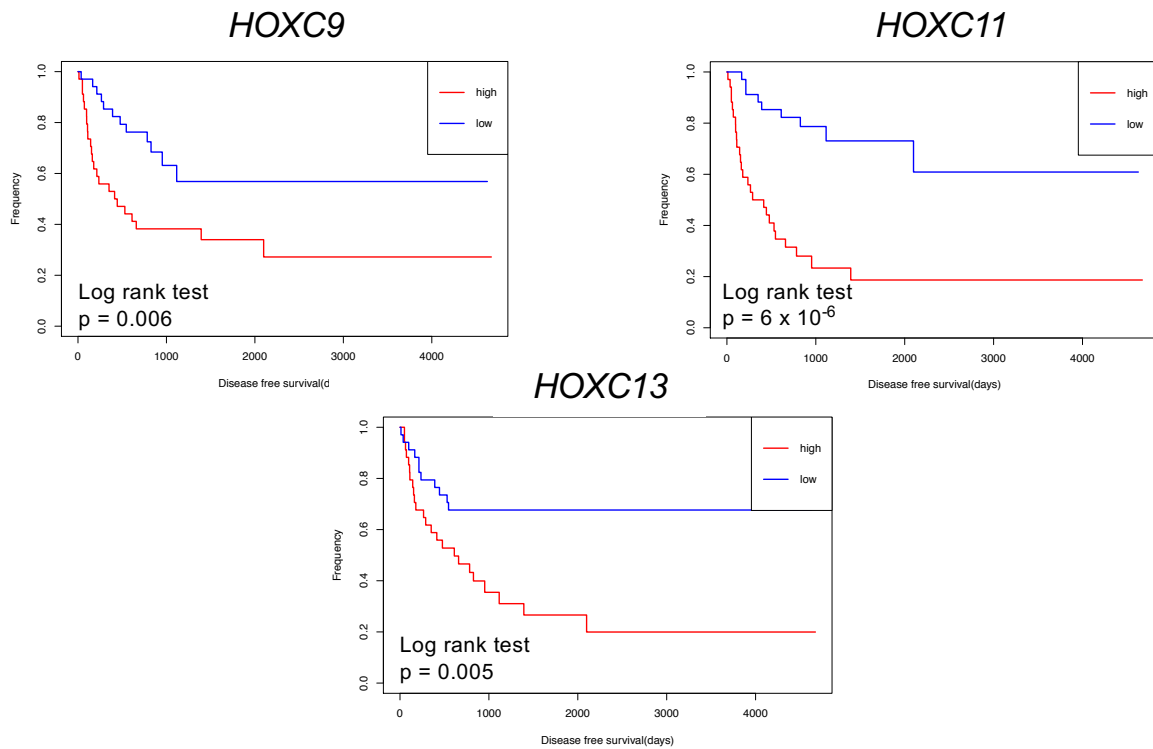


**Figure S7.** Cochin cohort HOX gene expression in C1A and C1B sub-types.

### TCGA cohort overall survival

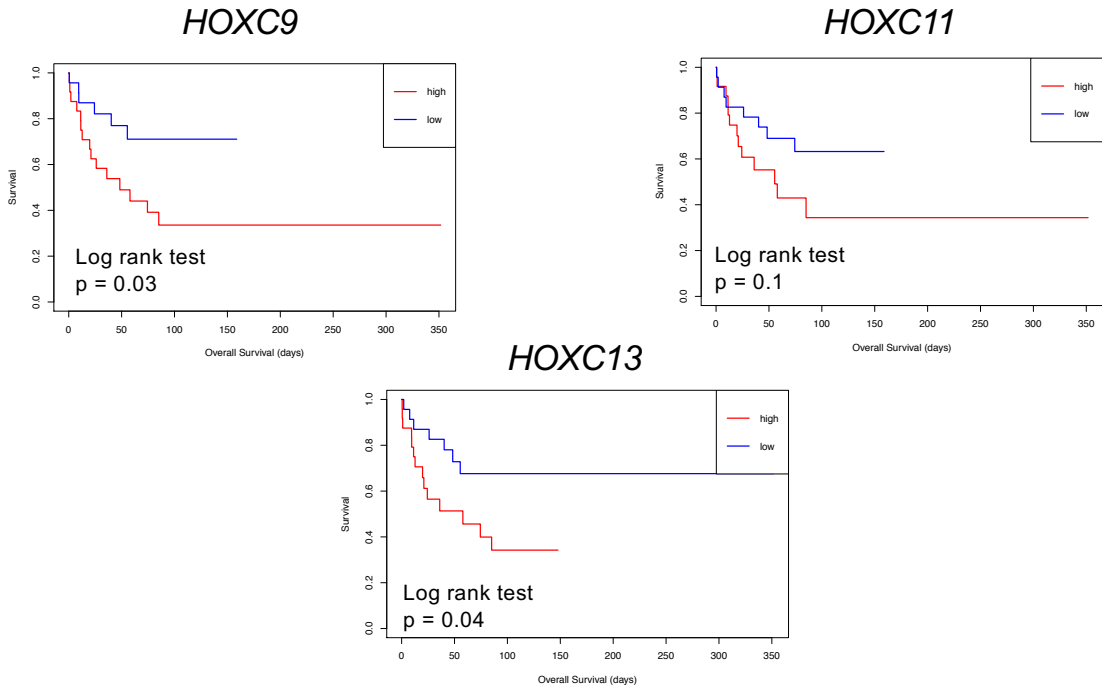


### TCGA cohort disease free survival

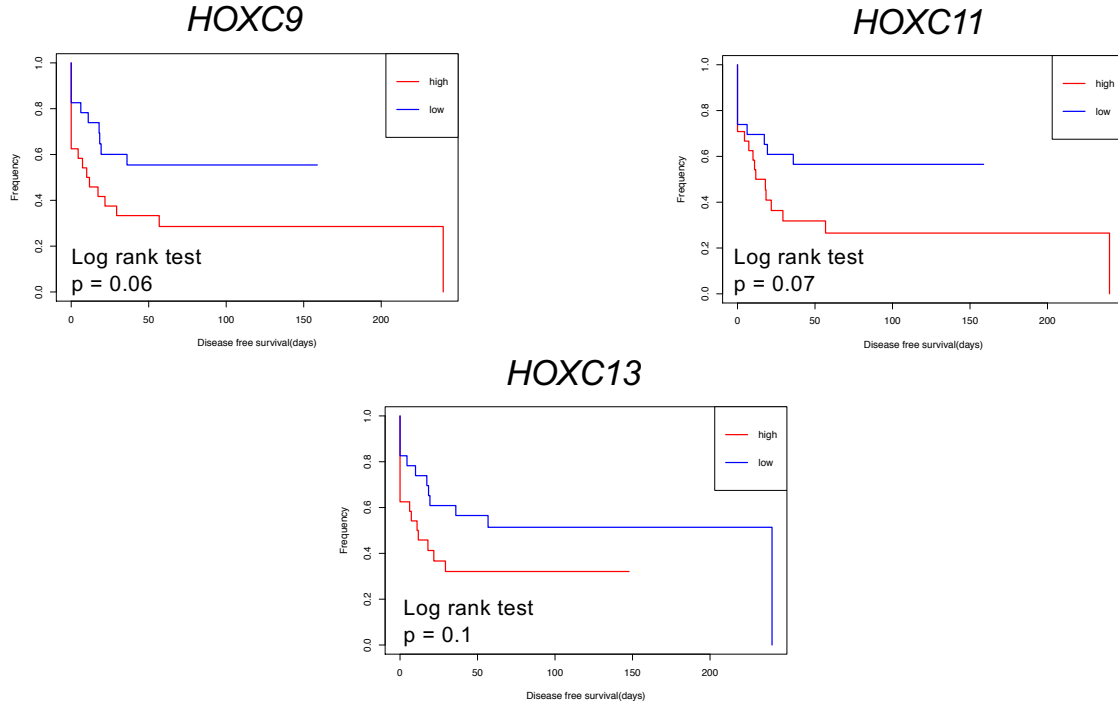


**Figure S8.** Kaplan Meier survival curves for ACC patients from the TCGA cohort that had either high or low *HOXC9*, *HOXC11* or *HOXC13* expression.

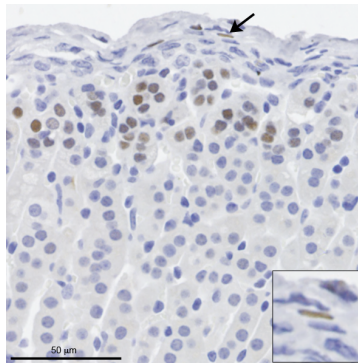
## Cochin cohort overall survival



## Cochin cohort - disease free survival



**Figure S9.** Kaplan Meier survival curves for ACC patients from the Cochin cohort that had either high or low *HOXC9*, *HOXC11* or *HOXC13* expression.



**Figure S10.** Fosb staining on a section of a 3-month-old male adrenal gland. Arrow indicates a positive cell in the capsule that is also shown at high magnification.

**Table S1. Genes used for the proliferation signature**

Probe Set ID	Gene Symbol	Gene Name
201291_s_at	TOP2A	Topoisomerase (DNA) II alpha 170kDa
201292_at	TOP2A	Topoisomerase (DNA) II alpha 170kDa
201890_at	RRM2	Ribonucleotide reductase M2
202095_s_at	BIRC5	Baculoviral IAP repeat-containing 5
202503_s_at	KIAA0101	KIAA0101
202580_x_at	FOXM1	Forkhead box M1
202589_at	TYMS	Thymidylate synthetase
202705_at	CCNB2	Cyclin B2
202870_s_at	CDC20	Cell division cycle 20 homolog (S. cerevisiae)
202954_at	UBE2C	Ubiquitin-conjugating enzyme E2C
203213_at	CDK1	Cyclin-dependent kinase 1
203214_x_at	CDK1	Cyclin-dependent kinase 1
203362_s_at	MAD2L1	MAD2 mitotic arrest deficient-like 1 (yeast)
203554_x_at	PTTG1	Pituitary tumor-transforming 1
203755_at	BUB1B	Budding uninhibited by benzimidazoles 1 homolog beta (yeast)
203764_at	DLGAP5	Discs, large (Drosophila) homolog-associated protein 5
204026_s_at	ZWINT	ZW10 interactor
204033_at	TRIP13	Thyroid hormone receptor interactor 13
204092_s_at	AURKA	Aurora kinase A
208079_s_at	AURKA	Aurora kinase A
204162_at	NDC80	NDC80 homolog, kinetochore complex component (S. cerevisiae)
204170_s_at	CKS2	CDC28 protein kinase regulatory subunit 2
204444_at	KIF11	Kinesin family member 11
204641_at	NEK2	NIMA (never in mitosis gene a)-related kinase 2
204822_at	TTK	TTK protein kinase
204825_at	MELK	Maternal embryonic leucine zipper kinase
204962_s_at	CENPA	Centromere protein A
205034_at	CCNE2	cyclin E2
205046_at	CENPE	Centromere protein E, 312kDa
206102_at	GINS1	GINS complex subunit 1 (Psf1 homolog)
206364_at	KIF14	Kinesin family member 14
207828_s_at	CENPF	Centromere protein F, 350/400kDa (mitosin)
209172_s_at	CENPF	Centromere protein F, 350/400kDa (mitosin)
209408_at	KIF2C	Kinesin family member 2C
209642_at	BUB1	Budding uninhibited by benzimidazoles 1 homolog (yeast)
209714_s_at	CDKN3	Cyclin-dependent kinase inhibitor 3
209773_s_at	RRM2	Ribonucleotide reductase M2
210052_s_at	TPX2	TPX2, microtubule-associated, homolog (Xenopus laevis)
210559_s_at	CDK1	Cyclin-dependent kinase 1
212022_s_at	MKI67	Antigen identified by monoclonal antibody Ki-67
212949_at	NCAPH	Non-SMC condensin I complex, subunit H
213226_at	CCNA2	Cyclin A2
214710_s_at	CCNB1	Cyclin B1
218009_s_at	PRC1	Protein regulator of cytokinesis 1
218039_at	NUSAP1	Nucleolar and spindle associated protein 1
218355_at	KIF4A	Kinesin family member 4A
218542_at	CEP55	Centrosomal protein 55kDa
218585_s_at	DTL	Denticleless homolog (Drosophila)
218662_s_at	NCAPG	Non-SMC condensin I complex, subunit G
218663_at	NCAPG	Non-SMC condensin I complex, subunit G
218726_at	HJURP	Holliday junction recognition protein
218755_at	KIF20A	Kinesin family member 20A
218883_s_at	MLF1IP	MLF1 interacting protein
219148_at	PBK	PDZ binding kinase
219306_at	KIF15	Kinesin family member 15
219918_s_at	ASPM	asp (abnormal spindle) homolog, microcephaly associated (Drosophila)
220651_s_at	MCM10	Minichromosome maintenance complex component 10
221436_s_at	CDCA3	Cell division cycle associated 3
221520_s_at	CDCA8	Cell division cycle associated 8
222039_at	KIF18B	Kinesin family member 18B
222077_s_at	RACGAP1	Rac GTPase activating protein 1

**Table S2. Mouse adrenal tumours analysed by RNAseq**

<b>Animal ID</b>	<b>Sex</b>	<b>Genotype</b>
184208-Turq182	Female	ABC
183159-B200	Female	ABC
B505	Female	ABC
207386	Female	ABC
153514	Female	ABC; Hoxb9
153516	Female	ABC; Hoxb9
189961-B532	Female	ABC; Hoxb9
191284	Female	ABC; Hoxb9
166836	Male	ABC
166838	Male	ABC
182098-Turq199	Male	ABC
169229	Male	ABC; Hoxb9
182083-Turq191	Male	ABC; Hoxb9
182086-Turq194	Male	ABC; Hoxb9

Table S3. Genes differentially expressed in ABC\_Hoxb9 Female vs ABC Female

Gene	ENSEMBL_Gene_ID	baseMean	log2FoldChange	fcsE	stat	pvalue	padj	Read count									
								184208_Turq1	183159_B200	B505_Normall	207386_Norm1	153514_Norm	153516_Norm	189961_B532	191284_Norm		
Sic27a2	ENSMUSG00000027359	21.9051591	4.191942937	1.148305906	3.650545482	0.000261684	0.085256787	0	1	2	5	14	20	130	2		
Prg4	ENSMUSG00000006014	10.56221999	3.687436402	1.012912294	3.640430098	0.000272183	0.085256787	2	1	1	2	8	2	30	39		
Apo17c	ENSMUSG00000004309	6.58620907	3.28113107	0.876188625	3.744777068	0.000180554	0.064025139	2	0	1	2	10	20	6	21		
Trim12a	ENSMUSG00000006258	95.97699655	3.243870079	0.734084608	4.418932152	9.91898E-06	0.010965722	22	14	28	10	345	45	276	29		
Ptprq	ENSMUSG000000035916	20.79260951	3.047391271	0.764611306	3.38554304	6.732E-05	0.03273491	1	12	2	4	25	47	13	63		
Foxl2	ENSMUSG000000050397	18.98663136	3.015393916	0.803884277	3.751029847	0.00017611	0.064025139	1	8	0	8	32	55	15	33		
Tdh	ENSMUSG000000052415	31.44739379	2.76969431	0.702768844	3.941117105	8.1103E-05	0.035360644	4	15	6	8	110	15	71	23		
Cfp5a5	ENSMUSG00000020014	944.4184571	2.611899487	0.462859836	5.642959889	1.67151E-08	5.23574E-05	220	226	389	226	2849	1038	2004	602		
Nr6a1	ENSMUSG000000063972	592.0603564	2.59182928	0.414526232	6.252509685	4.03909E-10	2.53035E-06	207	228	151	89	1053	1380	432	1196		
Bdnf	ENSMUSG000000048482	16.68834789	2.568158658	0.627518535	4.092562235	4.26633E-05	0.025657524	2	5	6	5	35	25	9	39		
Egfm1	ENSMUSG000000036000	12.77949348	2.458183988	0.532236783	4.618590947	3.86355E-06	0.005585499	6	3	4	3	18	28	17	24		
Dnase1l3	ENSMUSG00000025279	36.32121221	1.873191998	0.314700492	5.952707473	2.63742E-09	1.23919E-05	17	16	14	16	66	65	50	47		
Pnc5l	ENSMUSG000000027615	141.7561673	1.788716732	0.412409503	4.33724523	1.44287E-05	0.012912968	19	31	51	102	233	185	134	328		
Srfa5	ENSMUSG000000039728	184.6835041	1.68560986	0.358915349	4.707408006	2.50886E-06	0.00471516	78	79	122	71	193	477	240	219		
Cd3e	ENSMUSG000000032093	12.68089399	1.679113556	0.463407924	3.62340277	0.000290753	0.089580378	7	7	5	5	16	23	20	18		
Dsp	ENSMUSG000000054889	1085.754275	1.635048749	0.254713327	6.419172365	1.37017E-10	2.4443E-06	627	527	439	523	1190	2168	1323	1890		
Serpina3f	ENSMUSG000000066397	16.46395617	1.632374878	0.430623559	3.790723578	0.000150209	0.060064445	6	9	9	7	20	23	23	34		
Star9	ENSMUSG000000033705	536.9815802	1.469829889	0.316412575	4.64529543	3.3959E-06	0.005385956	454	211	268	205	808	1024	689	636		
Arlgap20	ENSMUSG000000053199	79.52185178	1.392139913	0.317315969	4.38725592	1.149E-05	0.011647653	37	30	64	43	114	145	84	119		
Zfp165	ENSMUSG000000066687	112.1571643	1.349854538	0.283971659	4.756272746	2.00747E-06	0.004192047	72	60	73	48	158	225	140	123		
Nr1c5	ENSMUSG000000074151	82.73442601	1.280321807	0.29981152	4.270422319	0.15103E-05	0.015942474	35	31	41	45	110	112	133	115		
Pdgrfa	ENSMUSG000000029231	859.0140792	1.274687466	0.304411773	4.187379002	2.82196E-05	0.019642819	526	705	310	470	1159	1286	856	1559		
Atf10d	ENSMUSG000000046808	80.59708051	1.258358531	0.344924793	3.648211314	0.000264072	0.085256787	67	27	32	63	129	101	99	126		
Adam2	ENSMUSG000000054555	58.85155406	1.193994304	0.331918089	3.597255897	0.000321592	0.094437519	29	38	28	49	54	79	112	83		
Cxcl9	ENSMUSG000000029417	56.13421237	1.183284704	0.314522196	3.762165975	0.000168448	0.064025139	29	57	26	27	74	71	82	83		
Serpina3g	ENSMUSG000000041481	85.85680109	1.174701512	0.283482245	4.143827462	3.41557E-05	0.02251222	38	47	49	77	118	140	99	119		
Gm4070	ENSMUSG000000078606	122.1933688	1.142426179	0.283971659	4.756272746	2.00747E-06	0.00360297	157	94	109	93	299	65	218	228		
Cars8	ENSMUSG000000027035	80.36201981	1.109977474	0.300500927	3.005075237	0.000209065	0.076903922	53	56	55	40	85	114	82	158		
Filip1	ENSMUSG000000034898	1076.60538	1.110708143	0.254310664	4.353263895	1.34126E-05	0.012603776	538	668	764	760	1005	1363	1548	1966		
Gvin1	ENSMUSG000000045868	187.1609099	1.069610302	0.262522575	4.074355516	4.61419E-05	0.02657524	166	108	103	106	333	211	251	220		
Nr5a1	ENSMUSG000000026751	23101.31731	1.046153797	0.257144039	4.06835717	4.73458E-05	0.025657524	12249	15538	14523	17988	33572	39728	19701	31512		
Pgm2l1	ENSMUSG000000039787	128.3059617	1.044079497	0.264608681	3.79550972	7.95508E-05	0.035360644	86	75	108	66	148	192	215	136		
Ith5	ENSMUSG000000025780	1828.633184	1.034868495	0.25403474	4.073728243	4.62665E-05	0.025657524	1200	1353	1399	846	2310	2314	1905	3301		
Tenn4	ENSMUSG000000048078	1271.834504	1.017866294	0.26614314	3.822628288	0.000132057	0.053945621	1134	964	690	577	2102	1482	1684	1542		
Cdon	ENSMUSG000000038119	189.7879037	0.915018221	0.19708776	4.642694802	3.43894E-06	0.005385956	125	106	142	152	236	221	251	285		
Vcam1	ENSMUSG000000027962	686.1843965	0.901959428	0.235112037	3.836292653	0.000124904	0.052165345	458	374	509	572	876	1183	709	808		
Finc	ENSMUSG000000008699	166.2070425	0.901711554	0.240700361	3.746199432	0.000179534	0.064025139	138	106	97	123	193	174	216	283		
Tnfrsf21	ENSMUSG000000023915	129.3081305	0.898144543	0.23955356	3.749243145	0.000177369	0.064025139	106	68	75	112	193	164	148	169		
Tmem181b-ps	ENSMUSG000000096780	285.7006728	0.895979863	0.211719068	4.231928054	2.31697E-05	0.016748095	179	190	246	183	385	442	294	366		
Dock8	ENSMUSG0000000052085	264.9339641	0.831284386	0.209374408	3.703324719	1.71747E-05	0.033723363	244	168	157	193	348	309	387	314		
Tgfb3	ENSMUSG000000029287	3527.69397	0.82298846	0.202464791	4.064849213	4.80635E-05	0.025657524	2766	1822	3052	2550	4028	4489	4715	4800		
Kar1k1	ENSMUSG000000032702	394.554745	0.797932126	0.184619767	4.322035714	5.14595E-05	0.01306728	250	296	259	349	531	488	531	551		
Sfn5	ENSMUSG000000033720	228.116906	0.77478386	0.213565554	3.640467156	0.000272144	0.085256787	191	125	188	167	245	284	340	286		
Msr1	ENSMUSG000000025044	78.52080089	0.743620497	0.207709181	3.580104121	0.000343457	0.097860037	63	54	64	53	108	97	95	94		
Klf21a	ENSMUSG000000026229	606.8049681	0.656018112	0.164687737	3.983405962	6.79346E-05	0.03273491	468	565	440	412	741	751	805	671		
Klhl12	ENSMUSG000000024659	805.6268982	0.597117643	0.120380972	4.960232762	7.04088E-07	0.001654078	674	601	644	646	988	1029	906	957		
Cyrr1	ENSMUSG000000041134	583.3518596	0.587586018	0.16059243	3.658864967	0.000253335	0.085020959	420	384	505	454	676	756	659	713		
Thns2	ENSMUSG000000054474	490.4863057	-0.775627118	0.206034003	-3.76458795	0.000166843	0.064025139	595	785	635	562	415	329	372	330		
1700040L02Rk	ENSMUSG000000019945	141.0419481	-0.895256479	0.204316839	-4.38170677	1.17793E-05	0.011647653	185	194	196	160	82	99	92	121		
Imc	ENSMUSG000000048782	124.1928239	-0.024029528	0.18460156	-3.598748818	0.000319752	0.094437519	198	115	211	141	89	60	94	87		
Skap1	ENSMUSG000000051196	529.0237922	-1.045117196	0.252283536	-1.142629408	3.43347E-05	0.02251222	660	931	574	686	455	320	348	258		
Sbspon	ENSMUSG000000032719	899.2796667	-1.079379755	0.254205857	-2.42608531	2.17538E-05	0.016353624	1544	1070	1202	1066	568	495	807	441		
Gstm7	ENSMUSG000000040035	1138.044699	-1.170350479	0.326918171	-3.579949305	0.000343661	0.097860037	964	2486	1078	1776	767	630	765	639		
RP23-82113.8	ENSMUSG0000000107432	69.66141325	-1.231228805	0.275430358	-4.470200064	7.81465E-06	0.009179279	68	114	94	115	42	35	49	40		
Tspan11	ENSMUSG000000030351	844.6849803	-1.411743131	0.315773244	-4.470749682	7.79459E-06	0.009179279	1402	1757	892	862	353	447	406	639		
Hist1h2ad	ENSMUSG000000071478	43.66655185	-1.605926072	0.407224753	-3.943586587	8.0272E-05	0.035360644	40	107	41	75	24	19	23	20		
Lsr	ENSMUSG0000000001247	403.2309522	-1.696471991	0.263892687	-6.32087737	2.60115E-10	2.4443E-06	890	633	502	441	206	209	181	165		
Rimkb	ENSMUSG000000040649	60.58136567	-1.829022286	0.447456305	-4.087599762	4.35859E-05	0.025657524	139	64	109	66	41	12	34	20		
Lyd6	ENSMUSG000000034634	5414.062031	-2.352429977	0.55369072	-4.246500561	2.17135E-05	0.016353624	3055	13550	12918	6696	1161	1244	3737	951		
4930481A15Rik	ENSMUSG000000086938	150.0490934	-2.377103166	0.58829502	-4.040665117	5.32998E-05	0.027073429	89	618	163	136	37	31	58	68		
Gulo	ENSMUSG000000034450	45.19409874	-2.455849138	0.482481479	-5.090038159	3.57991E-07	0.00061156	76	121	74	35	18	21	10	8		
Guca1a	ENSMUSG000000023982	124.8593841	-2.493240255	0.678372319	-3.675327227	0.000237545	0.081171201	49	583	78	138	36	27	49	39		
Lyk6	ENSMUSG000000044678	438.3079278	-2.58237902	0.451272697	-5.722435766	1.05008E-08	3.94702E-05	976	294	551	1182	175	71	121	135		
Magp15	ENSMUSG000000063704																

Table S4. Genes differentially expressed ABC\_HoxB9 Male vs ABC Male

Gene	ENSEMBL_Gene_ID	baseMean	log2FoldChange	lfcSE	stat	pvalue	padj	Read count							
								166836_Norm	166838_Norm	182098_Turq1	182098_Turq2	182098_Turq3	182098_Turq4	182098_Turq5	182098_Turq6
Nrb1a	ENSMUSG00000003972	811.1701312	3.641534655	0.245763457	14.817234002	1.13357E-49	2.06993E-45	162	107	92	1392	1573	1541		
Nrb1b	ENSMUSG00000003973	10.624151573	0.162415157	0.001624157	10.624151573	1.13357E-49	2.06993E-45	269	173	75	345	205	205		
Rbm24	ENSMUSG000000038132	5273.455917	1.77354782	0.167771123	10.57123433	4.05127E-26	2.4652E-22	2629	2637	4253	9027	8255	7198		
Nr5a1	ENSMUSG000000026751	27438.90468	1.928280233	0.192796792	10.00161993	1.49924E-23	6.84217E-20	9584	11915	12757	48019	37251	45108		
Mg2	ENSMUSG000000074604	105.3306037	4.490598127	0.513797543	8.740041792	2.3308E-18	8.50975E-10	8	12	7	322	102	181		
Fos	ENSMUSG000000021250	384.6775037	3.007200438	0.350590691	8.688726353	1.04636E-17	1.38355E-14	86	87	83	482	495	1075		
Pagr5	ENSMUSG000000032278	185.324288	-2.309866975	0.270957864	8.524819832	1.53408E-17	1.99127E-14	269	340	317	58	47	82		
Trib3	ENSMUSG000000035154	176.4274023	1.516125313	0.143081098	8.40081098	4.4203E-17	1.01351E-13	379	428	443	23	28	28		
Frzb	ENSMUSG000000027004	836.0153116	2.038833721	0.251620439	8.103394107	5.34467E-16	1.08408E-12	440	277	265	1445	1175	1415		
Actr1b	ENSMUSG000000054988	1536.290434	1.49896675	0.191315668	7.835044379	4.68677E-15	8.5557E-12	814	904	691	2611	2128	2070		
Kcnj2	ENSMUSG000000041695	487.6945518	1.447861269	0.190014778	7.619729798	2.54207E-14	4.21869E-11	239	279	267	692	629	820		
Fam19a4	ENSMUSG000000046500	150.052925	2.16280513	0.293579078	7.367027452	1.74475E-13	2.65311E-10	43	75	46	280	205	251		
Ctsp9	ENSMUSG000000040473	339.1089167	1.286672976	0.174905264	7.356399975	1.88937E-13	2.65311E-10	196	197	199	455	454	533		
Atp12b	ENSMUSG000000041329	4023.080709	1.153090881	0.157907027	7.302240516	2.82804E-13	3.65757E-10	5416	5324	5949	2329	2354	2822		
Fosb	ENSMUSG000000030545	159.7474421	2.972023973	0.413977847	7.179186021	7.01277E-13	8.15558E-10	35	58	15	338	217	237		
Sbpson	ENSMUSG000000032719	1233.201099	-6.31661149	0.227359428	-7.176571316	7.14841E-13	8.15558E-10	1867	1503	2224	690	619	496		
Mthfd11	ENSMUSG000000040675	394.8709454	1.756469142	0.246346008	7.130089728	1.00304E-12	1.07708E-09	130	204	174	692	552	584		
Pgm5	ENSMUSG000000041731	2289.168586	-0.238119805	0.291066692	-7.002236892	2.51908E-12	2.5476E-09	4090	4694	2262	837	839	1018		
Dusp5	ENSMUSG000000034765	147.9975296	1.67393789	0.208199793	6.906518816	4.96691E-12	4.7716E-09	75	86	79	229	207	213		
Hpc4	ENSMUSG000000046093	734.9315465	2.224448287	0.333777622	6.664462024	2.65637E-11	2.30914E-08	126	161	68	565	653	437		
Wnt2	ENSMUSG00000010797	38.84562318	-5.88946637	0.546114877	-6.571779658	4.97174E-11	4.03224E-08	179	169	62	7	8	8		
Fam19a9	ENSMUSG000000041817	25.71259866	3.85457296	0.586821405	6.588562307	5.08034E-11	4.03224E-08	4	3	3	46	58	41		
Khd7a	ENSMUSG000000078234	691.3638177	-2.27441209	0.347327557	-6.548317766	5.81888E-11	4.42599E-08	1369	1374	695	267	290	153		
Slt1	ENSMUSG000000025020	676.9815123	-1.647007297	0.252744036	-6.502866714	7.88036E-11	5.75424E-08	1207	1047	825	421	278	284		
Egr1	ENSMUSG000000029434	1195.437979	1.665113235	0.160512211	6.384183175	7.20917E-10	1.20829E-07	590	535	529	1536	1438	205		
Cpb1	ENSMUSG000000011463	1154.039819	1.114970515	0.175539376	6.351682629	2.17153E-09	1.43992E-07	816	727	643	1749	1516	1473		
181004115Rik	ENSMUSG000000062760	73.96064017	-3.52228182	0.528672156	-6.340844972	2.28508E-09	1.48979E-07	245	85	75	13	14	13		
Cela1	ENSMUSG000000023031	300.3591209	1.320252192	0.208989162	6.317323724	2.66132E-10	1.67525E-07	172	141	203	397	447	443		
Dkk2	ENSMUSG000000028031	269.3411136	-1.206639835	0.191678566	-6.295121349	3.07715E-09	1.86907E-07	363	362	403	145	159	104		
Lrn7a	ENSMUSG000000019906	1025.814724	1.803173034	0.287815956	6.26502108	3.72775E-09	1.29516E-07	488	488	395	2146	1596	1842		
Necap4	ENSMUSG00000003031	80.819715643	-3.920260612	0.308747162	-6.248490183	4.144349E-09	2.30914E-07	230	200	85	32	19	26		
Tspan7	ENSMUSG000000058254	1035.205687	-1.107060862	0.178791325	-6.191915966	5.94372E-09	3.82796E-07	1448	1259	1536	649	583	738		
Plin1	ENSMUSG000000030546	388.832783	-2.272761886	0.373505401	-6.08495053	1.16257E-09	6.25649E-07	3482	2143	1279	343	589	497		
Cspg5	ENSMUSG000000032482	1383.626308	1.15906702	0.192840094	6.010475815	1.84898E-09	9.64801E-07	896	792	879	1540	2101	2083		
Mid1	ENSMUSG000000035299	79.4443562	1.097425918	0.184206721	5.957578061	2.56003E-09	1.29815E-06	446	567	515	1228	1000	1000		
Tfmbp8	ENSMUSG000000022120	376.9331839	1.56346739	0.254791142	5.900783586	3.61779E-09	1.78494E-06	165	209	216	77	442	513		
Hsc4	ENSMUSG00000001280	154.2430412	-1.267053492	0.217935164	-5.813425294	1.91707E-09	2.93896E-06	124	80	65	200	85	96		
Gdf15	ENSMUSG000000038508	69.08074119	-4.242813257	0.420863927	-5.807405355	6.34314E-09	2.96908E-06	129	159	63	23	23	23		
Sic29a4	ENSMUSG000000050822	198.1680778	-1.206592712	0.208074283	-5.798855554	6.6769E-09	3.04717E-06	291	239	299	109	125	125		
Cox6a2	ENSMUSG000000030785	38.77786332	-3.04112475	0.576884298	-5.791952121	6.9573E-09	3.09769E-06	98	107	35	10	7	4		
Penk	ENSMUSG000000045573	135.0352103	-1.97702023	0.261427113	-5.767198391	8.60002E-09	5.30323E-06	229	151	202	76	66	72		
Mafk1	ENSMUSG000000041205	49.4026841	-1.967603981	0.242124283	-5.751138809	8.60447E-09	7.63208E-06	17	23	17	89	85	64		
Ame5	ENSMUSG00000007712	937.620151	-1.243399416	0.219375164	-5.736476423	8.66656E-09	3.0108E-06	1223	11209	14913	4424	654	5309		
Knk2	ENSMUSG000000037624	264.8281644	-4.465054446	0.255653381	-5.730628084	1.00059E-09	4.05908E-06	418	422	327	179	108	136		
Fst4	ENSMUSG000000036264	24.65736113	2.949956187	0.519652097	5.676790691	1.37245E-08	5.44655E-06	6	5	6	34	56	41		
Cpa3	ENSMUSG000000001865	57.95381033	1.815944878	0.32448714	5.596339313	2.18907E-08	8.50243E-06	27	190	186	134	379	371		
Ch1	ENSMUSG000000030077	281.3478027	1.206816812	0.216101554	5.584489287	2.34388E-08	8.91407E-06	120	186	134	379	371	428		
Pyg2	ENSMUSG000000029434	30.747092979	-2.561023866	0.46064122	-5.564366285	2.65107E-07	1.63208E-06	66	39	52	6	7	6		
Atp12b	ENSMUSG000000031367	696.5804607	0.92856982	0.168724109	5.503424007	3.72485E-08	1.35994E-06	48	445	529	967	824	945		
Lyf6	ENSMUSG000000034634	5895.589686	-1.644395494	0.298992026	-5.499797152	3.80228E-08	1.36099E-05	8995	9206	8563	2126	2159	4276		
Beam	ENSMUSG000000002980	3901.500115	-0.651860589	0.119143108	-5.47124045	4.46896E-08	1.56886E-05	4690	4842	4772	3093	3009	3002		
Ckap2	ENSMUSG000000037725	159.104734	1.431784668	0.262800805	5.448174584	5.08894E-08	1.7528E-05	98	92	69	225	181	281		
Apobce3	ENSMUSG000000009585	237.3259051	0.969816691	0.178474497	5.433923083	5.15284E-08	1.86346E-05	196	193	173	346	395	361		
Ncam1	ENSMUSG000000039542	236.6945035	-1.167093931	0.217964939	-5.354502045	8.57919E-08	2.84751E-05	320	283	380	137	135	166		
Cd5a1	ENSMUSG000000026837	565.3864131	2.243681773	0.233980122	5.33814328	9.39032E-08	3.0108E-05	951	830	604	337	374	373		
Rfn2	ENSMUSG000000025978	1918.492163	-0.800912404	0.152260883	-5.31330561	1.0764E-07	3.4473E-05	2683	2179	2466	1405	1413	1365		
Pha3	ENSMUSG000000051048	202.6466646	1.545897005	0.294881699	5.242736368	1.58213E-07	4.9796E-05	83	120	107	609	211	669		
Atd1	ENSMUSG000000038539	1046.063858	-1.33372337	0.25993419	-5.13100481	2.882E-07	8.91709E-05	2004	2649	1386	765	828	803		
Ch1	ENSMUSG000000045658	1367.769562	-1.05164338	0.205231538	-5.124180173	2.98835E-07	9.02026E-05	2179	1332	1825	976	921	773		
Hra3	ENSMUSG000000029434	31.34797416	-1.33787416	0.251309816	-5.119471611	3.69125E-07	1.25915E-05	25	25	15	78	130	130		
Cdgt5	ENSMUSG000000027350	8095.581355	-1.88705675	0.234087040	-5.078049722	3.81329E-07	0.000112277	14303	8586	10873	4706	4533	5573		
Steap3	ENSMUSG000000026389	310.1783864	1.015680981	0.200891592	5.055866053	4.28442E-07	0.000120286	203	239	173	428	432	385		
Hdc	ENSMUSG000000027360	110.7635733	-2.112889946	0.41815351	-5.05290496	4.3514E-07	0.000120286	271	134	135	26	60	39		
Sg2	ENSMUSG000000050711	2584.996508	-1.286987469	0.254717831	-5.052600602	4.35835E-07	0.000120286	4700	2642	3659	1359	1404	1745		
Per3	ENSMUSG000000028957	572.1838259	1.434590944	0.28399042	5.051393596	4.38598E-07	0.000120286	226	420	281	939	905	663		
Hh1	ENSMUSG000000040496	45.52000496	-1.417545941	0.304352667	-5.048352667	4.46353E-07	0.000120286	248	221	289	160	160	160		
Npas2	ENSMUSG000000025077	128.286461	-3.33086666	0.66072031	-5.04556764	4.4555E-07	0.000120286	492	131	78	11	20	38		
Tab2a	ENSMUSG000000058672	1237.174186	1.034832624	0.205139867	5.04452251	4.54656E-07	0.000120286	747	904	783	2760	1326	1902		
Per2	ENSMUSG00														



Table S4. Genes differentially expressed ABC\_Hoxb9 Male vs ABC\_Male

Gene	ENSEMBL_Gene_ID	baseMean	log2FoldChange	lfcSE	stat	pvalue	padj	Read count							
								166836_Norm	166838_Norm	182098_Turq1	182099_Turq1	182099_Norm	182083_Turq1	182086_Turq1	182086_Turq1
Lutrb2b	ENSMUSG00000045136	418.5396414	1.023461693	0.241586642	4.236416726	2.71151e-05	0.002879157	232	338	258	555	460	668		
Srsfb1	ENSMUSG00000002228	4.208243493	1.201238223	0.286431446	4.208243493	2.03123e-05	0.002879157	531	548	285	229	265	164		
Lutrb	ENSMUSG00000001247	283.1756427	-1.108270339	0.263881828	-4.199873661	4.67006e-05	0.00339214	426	297	439	136	204	199		
Klrg2	ENSMUSG00000071537	245.895666	-0.978859296	0.234352281	-4.176871208	2.95546e-05	0.003670202	316	280	383	164	193	338		
Psk1n	ENSMUSG00000003978	383.7963342	-0.968025839	0.232271051	-4.167656005	3.07748e-05	0.003795904	524	426	575	207	265	309		
Hox6	ENSMUSG00000001661	75.279327	-0.721850596	0.173300011	-4.165323424	3.10911e-05	0.003809187	929	959	1022	617	646	502		
Faim2	ENSMUSG00000023011	186.8510305	-1.320852704	0.137591612	-4.15965292	3.18732e-05	0.003878963	382	193	226	90	121	109		
Zowim6	ENSMUSG00000003517	353.8321032	-0.765381377	0.185644237	-4.157199204	3.211570920e-05	0.00390304	428	172	454	483	444	444		
Pknox1	ENSMUSG00000029153	600.0175208	0.820427614	0.197690863	4.150053279	3.32398e-05	0.003992055	473	480	349	807	784	708		
Oid2	ENSMUSG000000030867	75.24432344	1.372584478	0.331057263	4.146063629	3.38242e-05	0.004035666	43	34	49	84	98	144		
Chacp1	ENSMUSG00000027313	77.72657713	-1.379538766	0.332627834	-4.142629492	3.43346e-05	0.004065097	130	124	83	42	55	32		
Ragap1	ENSMUSG00000023015	157.7841987	1.059080788	0.255728818	4.141421363	3.45161e-05	0.004065097	119	104	84	182	199	258		
Cdc2	ENSMUSG00000048922	42.83430558	1.600410171	0.387753942	4.127385946	3.66911e-05	0.004266612	26	25	13	57	56	102		
Lm2	ENSMUSG00000029228	152.753716	-1.28522923	0.335620789	-4.127364205	3.69695e-05	0.004266612	310	167	75	111	68			
Actg1	ENSMUSG00000062825	18153.77224	0.629414448	0.152608351	4.124377477	3.71397e-05	0.004294995	12984	15636	14146	23458	25312	20387		
Trf4	ENSMUSG00000017386	309.3234089	0.794445591	0.19400769	4.094918047	4.22318e-05	0.004848686	240	250	189	383	381	414		
Neto2	ENSMUSG00000036902	125.3040039	0.882450042	0.126704236	4.072140246	4.65831e-05	0.005290626	82	88	95	160	151	176		
Sloc1411	ENSMUSG00000074796	92.41990767	-1.555342622	0.381983559	-4.071752786	4.66607e-05	0.005290626	107	171	135	69	45	27		
Suox	ENSMUSG00000049858	659.1906882	-0.712076157	0.175500462	-4.057299148	4.96222e-05	0.00555291	897	804	754	561	453	483		
Lrat	ENSMUSG00000028003	19.3275844	-1.270239728	0.682811146	-4.057215112	4.96575e-05	0.00555291	79	72	67	164	122	144		
Dhh	ENSMUSG00000023000	432.0742937	-0.9257802	0.228251019	-4.055974004	4.99258e-05	0.00555291	665	599	434	327	299	268		
Cpeb1	ENSMUSG00000025586	520.8678764	0.967181581	0.238678455	4.052236645	5.07303e-05	0.005612617	351	354	353	867	692	508		
Pdgr1	ENSMUSG00000032006	1118.628583	-0.760313781	0.187830337	-4.046906342	5.18996e-05	0.005707326	1503	1494	1223	956	796	740		
Evf4	ENSMUSG00000017724	122.4242107	0.942811535	0.233150257	4.043793675	5.25932e-05	0.005749036	93	84	75	168	176	140		
Tspan11	ENSMUSG00000030351	977.1613964	-1.118975187	0.277710736	-4.028622026	5.61047e-05	0.005885548	1507	1037	1471	680	747	600		
Gm21857	ENSMUSG00000000992	100.2022919	0.24889255	0.398694967	4.027369827	5.63716e-05	0.005885548	72	67	164	421	464	208		
Cna2	ENSMUSG00000027715	143.9642223	1.058331069	0.262783111	4.027390722	5.63993e-05	0.005885548	122	86	73	180	195	248		
Sord	ENSMUSG00000027227	5442.175027	0.852213272	0.121733615	4.024931377	5.69919e-05	0.005885548	3046	3995	4600	7689	7122	6202		
Ptprn	ENSMUSG00000026204	209.2467642	-1.045424662	0.259820211	-4.023646419	5.73098e-05	0.005885548	361	258	227	123	158	122		
Camkv	ENSMUSG00000032936	1616.278286	0.815978385	0.202770784	4.023254089	5.73995e-05	0.005885548	1032	1197	1285	2295	2234	1675		
h4305731Rik	ENSMUSG00000039620	174.2666173	0.970284357	0.241196295	4.022799585	5.75104e-05	0.005885548	117	112	124	256	260	156		
Sic1a2	ENSMUSG00000001740	1959.4244708	1.631967978	0.157157116	4.022325701	5.752205701	0.005885548	513	512	513	843	855	855		
Dhh	ENSMUSG00000000889	1248.142421	-0.997680203	0.24056191	-4.021992748	5.77078e-05	0.005885548	1974	1317	1609	689	761	1048		
Dhc	ENSMUSG00000020182	202.2759688	-1.262810715	0.314300967	-4.017839108	5.87343e-05	0.006057594	278	204	375	144	127	144		
Myot	ENSMUSG00000024471	56.33413627	1.489116893	0.370820691	4.015733013	5.92613e-05	0.006077614	31	34	24	113	80	57		
D930160D6Rik	ENSMUSG00000097392	107.0065075	1.209674013	0.302801716	3.994937195	6.47114e-05	0.006959479	65	47	82	119	179	150		
Wisp2	ENSMUSG00000027656	27.53785264	2.186898976	0.547867235	3.991660268	6.56123e-05	0.006959479	72	43	24	9	24	71		
Fam2	ENSMUSG00000004044	1959.5792984	1.47653928	0.137730451	3.988694924	6.59437e-05	0.006959479	2366	2444	2172	1631	1623	1523		
Fam4a	ENSMUSG00000020808	61.2169183	1.503846138	0.37227773	3.979473224	6.70344e-05	0.006885059	44	26	26	70	79	122		
Rn1h4	ENSMUSG00000047638	188.2740738	0.938459797	0.235426862	3.986205269	6.71384e-05	0.006885059	135	120	132	303	203	236		
Rnd3	ENSMUSG00000017144	562.0778444	0.801450268	0.201188466	3.983579601	6.78849e-05	0.006885059	332	467	431	783	688	671		
Kcnn2	ENSMUSG00000054477	463.1750722	0.731446193	0.183645116	3.982932997	6.80707e-05	0.006885059	2874	3521	4052	5619	6263	6081		
Srsf23	ENSMUSG00000042195	37.2392264	-1.539792276	0.386264481	-3.982656736	6.81492e-05	0.006885059	45	72	49	18	24	61		
Id2b94	ENSMUSG00000033581	282.886669	0.698542651	0.175511186	3.979910265	6.89413e-05	0.006790071	236	214	196	347	346	355		
Pg57bp	ENSMUSG00000021719	377.4442783	0.813921858	0.240803114	3.974167392	7.02629e-05	0.006857848	290	269	262	560	490	393		
Rc3h2	ENSMUSG00000061601	122.3815225	-1.29127948	0.325665306	-3.965050798	7.33803e-05	0.007087607	237	171	113	78	63	72		
Fam81b1	ENSMUSG00000051515	335.0259434	-0.63348465	0.159833141	-3.963412386	7.38866e-05	0.007098888	399	405	418	273	251	263		
Tp2	ENSMUSG00000027469	144.7638874	0.96516283	0.243611822	3.961784883	7.43196e-05	0.007110041	114	96	85	190	162	222		
Camk2b	ENSMUSG00000057897	400.1141863	-1.041329948	0.265207226	-3.941747607	7.88991e-05	0.007690876	543	647	567	255	242	317		
Nduf412	ENSMUSG00000040280	240.4354708	1.906539219	0.23094064	3.926033155	8.63582e-05	0.008188238	302	269	370	154	158	149		
Mm2	ENSMUSG00000032688	919.7664413	0.768525872	0.196926278	3.902607008	9.51621e-05	0.008954562	609	837	596	1159	1136	1182		
E130012A19Rik	ENSMUSG00000043439	118.9157044	0.868885815	0.222834806	3.899237431	9.64961e-05	0.009033521	73	86	94	156	156	149		
Spep	ENSMUSG00000026207	248.1606696	-0.68293129	0.175361854	-3.894422384	9.84338e-05	0.009167829	301	321	295	185	203	182		
Rev1	ENSMUSG00000026082	634.3872379	0.729592607	0.187476324	3.891651974	9.95646e-05	0.009226095	468	517	447	919	765	600		
Mybl2	ENSMUSG00000061740	1029.84444	0.629959651	0.162397896	3.88524709	0.00102226	0.009377554	1183	1197	1375	757	757	1050		
Aurkb	ENSMUSG00000020897	64.6370226	1.323940721	0.342034039	3.870786441	0.00108485	0.00909195	45	32	34	65	95	117		
Thra	ENSMUSG00000058756	2150.000944	-0.74266064	0.19201283	-3.867765715	0.00109837	0.009975505	3109	2176	2790	1501	1656	1669		
Rtnr4b	ENSMUSG00000045287	5413.863694	-0.564513715	0.146156038	-3.864033342	0.00112277	0.010146575	6149	6089	6871	4524	4610	3970		
Cyb4	ENSMUSG00000066975	89.18947543	-1.882307362	0.489042365	-3.848958638	0.00118618	0.01066814	182	171	69	48	17	49		
Ftntm108	ENSMUSG00000042757	400.1141863	-1.041329948	0.265207226	-3.833331327	0.00121277	0.01092049	44	44	27	69	84	81		
Npas4	ENSMUSG00000045903	10.18372322	0.811161757	1.515350517	3.834630833	0.00125634	0.011185758	0	1	0	2	2	31		
Gm2a	ENSMUSG00000000594	705.545762	-0.497122103	0.129678361	-3.833500823	0.00126332	0.011195314	8438	8253	8093	5732	5730	6259		
Ctd1e1	ENSMUSG00000051159	224.5901391	-1.46933284	0.384699298	-3.819438432	0.00133756	0.011795714	225	304	462	84	93	180		
Pkb	ENSMUSG00000020233	113.9715047	1.29020434	0.33861256	3.810267228	0.00138817	0.012131878	90	57	51	131	136	218		
Dusp26	ENSMUSG00000039661	42.00715353	-1.380618706	0.362355282	-3.810124418	0.00138897	0.012131878	59	50	76	18	25	28		
Srsf5	ENSMUSG00000039718	40.13120254	-1.380618706	0.362355282	-3.810124418	0.00138897	0.012131878	59	50	76	18	25	28		
Ragap1	ENSMUSG00000032556	318.0220267	1.267824371	0.334212823	3.793320626	0.00148621	0.012852802	116	157	287	435	462	451		
Inhb	ENSMUSG00000037035	137.7303923	0.831119833	0.219212528	3.791388389	0.00149807	0.012861515	84	101	113	174	178	177		
Filip1l	ENSMUSG00000043336	902.4789056	-0.648486979	0.171061601	-3.79095										

Table S4. Genes differentially expressed ABC\_Hoxb9 Male vs ABC Female

Gene	ENSEMBL_Gene_ID	baseMean	log2FoldChange	lfcSE	stat	pvalue	padj	Read count			
								166836_Norm	166838_Norm	182098_Tur19	182083_Tur19
Neil2	ENSMUSG0000022454	13.6119197	2.283414696	0.647390655	3.527104816	0.00024013	0.026722929	3	8	3	8
Bu2	ENSMUSG0000022455	65.12388888	1.471402227	0.124636904	11.521166329	0.00024013	0.026722929	63	38	31	125
Bu2	ENSMUSG0000022456	468.7333698	0.571779987	0.162802988	-5.12109761	0.000444585	0.028082676	160	529	54	254
Pr5	ENSMUSG0000036106	164.6942232	-0.834666144	0.237886612	-3.50893772	0.0004499	0.028320445	179	192	262	117
Dusp14	ENSMUSG0000018648	244.0798448	0.107915861	0.290237444	3.507183102	0.000452877	0.028409887	134	154	197	245
Spry1	ENSMUSG0000037211	947.0523941	-0.554648395	0.158275488	-3.504322756	0.00045777	0.028618475	1119	1232	1029	717
Sic3a1	ENSMUSG0000023942	2721.789601	-0.654796013	0.187242401	-3.497049857	0.000470434	0.029298967	3251	3928	2808	2251
Nhr3p1	ENSMUSG0000023943	101.79220000	0.01182969573	0.291129217	0.495249127	0.000470434	0.029298967	82	91	38	26
Synd	ENSMUSG0000009394	98.57744984	-0.964846232	0.276036949	-3.495513748	0.000473437	0.029296947	161	122	108	78
Cd55	ENSMUSG0000026399	111.840714	-1.623283819	0.464812527	-3.492340947	0.000478807	0.029529106	195	75	237	45
Col2e2	ENSMUSG0000036103	873.3304301	-0.490763072	0.140767122	-3.486344835	0.000489669	0.030097354	1015	1076	970	707
Akr1b7	ENSMUSG0000052131	8573.060795	-0.909560066	0.261100182	-3.483567343	0.000494779	0.030149578	10965	14513	7086	5885
Utp18	ENSMUSG0000054079	639.3703159	0.502137816	0.144261483	3.48074764	0.000500016	0.030149578	519	513	557	725
Nhr1	ENSMUSG0000027335	91.16287527	-1.57388594	0.452172477	-3.480720248	0.000500057	0.030149578	146	64	200	50
Nptx1	ENSMUSG0000025582	68.23170099	-1.55352757	0.446357496	-3.480455876	0.000500561	0.030149578	146	89	71	55
Smad6	ENSMUSG0000036867	224.7208814	-0.61200645	0.175866017	-3.479958558	0.000501491	0.030149578	258	278	279	181
CdkSpr2	ENSMUSG0000039298	3280.344347	0.44560483	0.128062702	3.47958323	0.000502194	0.030149578	2699	2708	3789	1882
A730017C2ORik	ENSMUSG0000050875	69.50165731	-1.930487092	0.267438293	-3.479259017	0.000502802	0.030149578	83	88	103	50
Klf11	ENSMUSG0000012443	77.36959602	1.158681146	0.333156437	3.47788911	0.000503579	0.030149578	69	42	32	109
Ncapg	ENSMUSG0000015880	38.86786156	1.471402227	0.223295075	3.476336904	0.000508264	0.030149578	32	17	13	47
Phox2a	ENSMUSG0000007946	88.09303764	-1.352575759	0.389867473	-3.476247317	0.000508483	0.030149578	133	77	170	36
Tsh2	ENSMUSG00000047907	1678.800815	-0.68503661	0.19706818	-3.476140144	0.000508686	0.030149578	1967	2467	1776	1444
Sih3bp5	ENSMUSG0000021892	1436.020814	-0.480246356	0.138233521	-3.474167139	0.000512442	0.030224382	1603	1711	1705	1137
Resp18	ENSMUSG0000033061	165.9197902	-1.408043716	0.405339514	-3.473739095	0.00051326	0.030224382	231	158	335	53
Hmo2	ENSMUSG0000038193	200.1790172	-1.542684988	0.444301109	-3.472161012	0.00051287	0.030243509	268	158	469	62
Aunip	ENSMUSG0000037821	40.59100000	0.432524462	0.21531122	3.471942126	0.000514908	0.030243509	21	54	39	79
Sic3d3	ENSMUSG0000050473	69.28962292	-2.87917397	0.371834442	-3.463885044	0.00052683	0.031076070	100	69	126	43
M10015O1ORik	ENSMUSG0000026051	4188.267013	1.419620717	0.410080253	3.461746333	0.000536683	0.031201093	1991	2558	2289	3275
Stem	ENSMUSG0000009376	73.12490383	-1.266246211	0.366271548	-3.457124143	0.000545973	0.031640453	132	102	77	29
Igpc3	ENSMUSG0000040797	39.95733316	-1.390605471	0.402564127	-3.454370064	0.00055158	0.031864214	83	48	42	21
Nag2	ENSMUSG0000020297	97.3894001	-1.08855016	0.315393558	-3.451418038	0.000557649	0.032070023	147	101	150	45
Gars	ENSMUSG0000020297	40.59100000	0.432524462	0.21531122	3.471942126	0.000514908	0.030243509	21	54	39	79
Armud	ENSMUSG0000049804	360.8250109	-0.093167523	0.317013344	-3.448332835	0.000554058	0.032278645	642	542	289	253
Gm10644	ENSMUSG0000074219	29.08878472	-1.409587022	0.409247807	-3.444336164	0.000572463	0.032657252	49	40	37	14
Phox2b	ENSMUSG0000012520	68.0192807	-1.068556228	0.310520021	-3.441183304	0.000579177	0.032937286	118	84	75	48
Ady8	ENSMUSG0000022376	92.45511696	-1.574900999	0.458354198	-3.435991217	0.00059039	0.033344955	146	175	80	24
Necab3	ENSMUSG0000027489	22.00895154	1.65053451	0.480454005	3.435366203	0.000591754	0.033344955	9	8	15	42
Igfbp8	ENSMUSG0000028661	23.74384804	1.84410851	0.538279864	3.435333504	0.000594955	0.033344955	12	10	6	28
Gucy1a	ENSMUSG0000023979	76.18577868	-1.328464587	0.387723226	-3.426323236	0.000611805	0.033436462	152	109	66	54
Gm14519	ENSMUSG0000082838	126.0752393	0.798930055	0.233577721	3.420403507	0.000625283	0.033063659	86	109	81	172
Imnt	ENSMUSG0000003477	38.8225443	-1.26867365	0.37099743	-3.419629214	0.000627065	0.033063659	69	50	45	25
Col4a5	ENSMUSG0000031274	438.854776	-0.986248177	0.28864437	-3.416827917	0.000633553	0.033153728	294	548	407	339
Ptfl1	ENSMUSG0000031595	113.6037861	-0.83810651	0.24527458	-3.41660677	0.000634068	0.033153728	243	261	172	164
Nkx2	ENSMUSG0000029338	1545.204258	-0.69751025	0.204189833	-3.416139158	0.000635157	0.033153728	720	2034	1007	1207
Ncapd	ENSMUSG0000034906	93.90620917	0.910847209	0.266859973	3.413202804	0.000642041	0.033409264	75	52	69	105
Get4	ENSMUSG0000025858	2442.791016	-0.447955161	0.131360352	-3.410212451	0.000649332	0.033626261	2641	2750	2136	1974
Gpr55	ENSMUSG0000049608	296.214638	0.938693834	0.275331808	3.409318532	0.000651254	0.033626261	231	247	131	376
Gm12781	ENSMUSG0000095123	102.5744931	0.944872341	0.277163885	3.409076993	0.000651831	0.033626261	87	64	59	112
953077C5ORik	ENSMUSG0000036411	49.17536561	-0.693244612	0.20355254	-3.405560016	0.000650416	0.033598723	138	161	172	302
Ptcl	ENSMUSG0000033943	148.2720505	-1.025376901	0.302089913	-3.394176073	0.000658357	0.033788545	138	128	157	219
Scg5	ENSMUSG0000023236	110.2920724	-1.00366853	0.295840031	-3.392599872	0.000692327	0.033788545	169	108	164	68
Gatm	ENSMUSG0000027199	286.7730806	-0.851598815	0.251042351	-3.392255575	0.000693197	0.033788545	336	483	288	211
Lym1	ENSMUSG0000022594	5861.881691	-0.973976888	0.287428105	-3.388593087	0.000702522	0.033788545	9207	9175	4924	4774
Klf15	ENSMUSG0000030087	475.1878637	-1.074719789	0.228476177	-3.388525233	0.000702696	0.033772855	500	532	767	373
Nkx2	ENSMUSG0000025622	75.6922442	-0.767293405	0.315019055	-3.38177858	0.000720203	0.033772855	61	34	109	94
Crabp1	ENSMUSG0000032291	33.5064764	-1.329660683	0.393306531	-3.380723632	0.000722592	0.033772855	42	39	63	16
Wnk2	ENSMUSG0000037989	255.1720623	-1.076091597	0.318304041	-3.380703533	0.000723005	0.033772855	151	231	111	418
Cttn3	ENSMUSG0000008153	147.3542931	0.889775162	0.263281531	3.37955784	0.000726025	0.033827883	125	109	76	169
Wnt6	ENSMUSG0000033227	230.8433165	-1.034985636	0.306768919	-3.37838282	0.000741306	0.033914624	320	385	226	167
Ehd2	ENSMUSG0000074364	2054.028249	-1.343550756	0.16396249	-3.37581081	0.000741972	0.033914624	2570	2666	2093	1607
Igfbp3	ENSMUSG0000040457	49.17536561	-0.693244612	0.20355254	-3.37581081	0.000741972	0.033914624	140	143	154	87
Sic3a2	ENSMUSG0000033965	1021.202823	-0.691469729	0.2058617	-3.373336394	0.000786973	0.041282162	1480	1188	1116	837
Cep85	ENSMUSG0000037443	346.9467243	-1.179983852	0.351913433	-3.353051463	0.000792528	0.041745969	269	234	135	307
Fstl3	ENSMUSG0000020325	262.7154706	-0.850355507	0.253636036	-3.35266045	0.000800388	0.041745969	272	440	302	196
Rab39b	ENSMUSG0000031202	70.64140472	-1.034501303	0.309230329	-3.345406986	0.000821619	0.042731217	110	71	39	46
Sgsm1	ENSMUSG0000042216	55.40361214	-1.17734905	0.352607656	-3.344164404	0.000825208	0.042013616	104	64	63	34
Tf1	ENSMUSG0000025527	1.211791708	0.463191708	0.364191708	3.337351126	0.00083116	0.04311616	61	23	16	102
HoxC5	ENSMUSG0000022485	181.7893907	-0.807079008	0.241900626	-3.336411	0.000848676	0.04376435	201	216	277	148
Me1	ENSMUSG0000032418	31551.28546	-0.485930698	0.145692922	-3.335184583	0.000852428	0.043834007	35974	38107	36365	29261
Cplx1	ENSMUSG0000033615	42.91110991	-1.3840753	0.41591056	-3.32781957	0.000852885	0.04482961	63	82	41	27
Tbx20	ENSMUSG0000031965	61.4338865	-1.134726964	0.341277864	-3.325069934	0.000883964	0.045168247	113	61	34	38
Asic2	ENSMUSG0000033007	32.0542477	-1.34355914	0.404139671	-3.324490292	0.000885797	0.045168247	44	34	60	19
Nkx1	ENSMUSG0000050519	94.9923939	-0.64549481	0.13875454	-3.322179918	0.000891417	0.045168247	606	601	719	519
Tmem130	ENSMUSG0000043388	87.58060649	-0.997593985	0.300285559	-3.322173179	0.000893192	0.045292297	148	102	101	46
Acnt2	ENSMUSG0000021226	281.658112	-0.630260909	0.189794631	-3.320795186	0.000897614	0.045390416	311	341	375	199
Cd3np	ENSMUSG0000042489	35.2751195	-1.307023474	0.393778105	-3.319103492	0.00090307	0.04554015	28	15	18	57
Dpep1	ENSMUSG0000019278	634.8936786	-0.742600922	0.22							

Table S4. Genes differentially expressed Adx\_Hoxb9 Male vs CB3 Male

Gene	ENSEMBL_Gene_ID	baseMean	log2FoldChange	lfcSE	stat	pvalue	padj	Read count					
								166836_Norm	166838_Norm	182098_Tur19	169229_Norm	182083_Tur19	182086_Tur19
Kcnq1	ENSMUSG00000009545	116.3147942	-0.802057493	0.253964108	-3.158152931	0.001587722	0.067299806	141	171	131	87	98	69
Sh2b2a	ENSMUSG00000008626	190.8688956	-0.93519496	0.296330405	-3.157283263	0.001587722	0.067299806	314	279	159	140	126	147
Ckap2l	ENSMUSG000000048327	72.49704332	1.037498647	0.328763195	3.155755848	0.001600828	0.067585075	61	50	31	85	84	114
Gm6665	ENSMUSG000000091561	41.184502	-0.810904844	0.256990464	-3.155344649	0.001603086	0.067585075	485	423	695	264	293	356
Chd1	ENSMUSG000000023852	2851.62008	0.559219325	0.177474065	3.150999176	0.001621729	0.068415904	2262	2468	2187	3986	3201	3005
Klf20a	ENSMUSG00000003779	156.6086389	1.024186009	0.325093768	3.150432616	0.001630289	0.068415904	134	115	60	197	188	245
Gm9890	ENSMUSG000000096606	1371.863761	-0.814338894	0.258755164	-3.147440641	0.001648756	0.06875129	2178	1812	1257	1140	816	1028
Dnt4	ENSMUSG000000039982	405.441104	-0.862317492	0.27129036	-3.146893136	0.001654644	0.06875129	529	467	351	268	220	283
Cadm1	ENSMUSG000000032076	1312.717482	0.500903997	0.161748964	3.146876403	0.001650247	0.06875129	1110	1008	1132	1462	1733	1430
Strn1	ENSMUSG000000028832	558.8057251	0.76784998	0.244097832	3.145664891	0.001657098	0.06875129	376	357	508	652	589	871
Gm10038	ENSMUSG000000058281	9.40749792	2.220378256	0.705853946	3.145662454	0.001657111	0.06875129	5	3	2	16	14	17
Nov1	ENSMUSG000000021047	142.2760962	-0.949480859	0.301910627	-3.144907052	0.001661396	0.068772755	157	162	244	90	77	124
Unc5c	ENSMUSG000000059921	39.2391915	-1.245444395	0.396176427	-3.143661027	0.001668486	0.068844244	72	43	50	16	27	27
C7	ENSMUSG000000079105	327.1272933	-1.569649821	0.49597016	-3.143248874	0.001670656	0.068844244	757	574	137	167	159	169
Ampc3	ENSMUSG00000005686	483.3639867	0.674553572	0.214854799	3.139578805	0.001691909	0.069418024	557	501	726	345	414	359
Tia1	ENSMUSG000000071337	581.671761	0.580307543	0.184874868	3.138920662	0.001695714	0.069418024	553	427	419	674	699	718
Gstm7	ENSMUSG00000004035	789.8977761	-0.592606859	0.188809555	-3.138648016	0.001697292	0.069418024	888	855	1107	560	676	654
Grb14	ENSMUSG000000026888	1388.92635	0.874278727	0.278591023	3.138215178	0.0016998	0.069418024	999	764	1179	1233	2124	2035
Prr16	ENSMUSG000000073565	280.0366035	0.915500518	0.291905294	3.136292958	0.001710982	0.069898949	166	233	184	504	314	281
Cebpβ	ENSMUSG000000042359	151.3663739	-0.965462396	0.307846318	-3.136183674	0.00171162	0.069898949	242	231	128	119	95	94
Gm43843	ENSMUSG000000106944	97.60850072	0.866750797	0.27660699	3.133510097	0.00172729	0.069823582	89	64	54	118	120	140
Pon2	ENSMUSG000000032667	1884.132818	-0.621646211	0.198394051	-3.13339244	0.001727982	0.069823582	2449	2443	1959	1756	1396	1301
Pon3	ENSMUSG000000029759	53.5014818	-0.968221194	0.309015558	-3.133244165	0.001728856	0.069823582	1012	659	447	385	367	331
Rps6ka1	ENSMUSG000000003644	599.8237356	0.604560801	0.193096994	3.130865941	0.001742917	0.070236093	514	486	949	606	752	813
Rfbp3	ENSMUSG000000025576	190.1138685	1.078657383	0.344644214	3.129770757	0.001749428	0.070343177	83	114	169	181	260	333
Nfat2	ENSMUSG000000020222	425.811104	-1.336734407	0.427580655	-3.126274287	0.001770363	0.071028539	297	389	382	242	116	66
Cnrm	ENSMUSG000000068101	24.58861117	1.28683928	0.412172853	3.122086455	0.001795742	0.071476126	14	14	15	32	31	41
Vat1l	ENSMUSG000000046844	84.6656803	-1.141334252	0.365572685	-3.122044667	0.001795997	0.071476126	175	78	97	56	54	48
Gm13889	ENSMUSG000000087006	321.2494048	-0.181680229	0.347053315	-3.116755213	0.001828533	0.072793456	332	331	646	152	199	267
Lcd3	ENSMUSG000000023505	97.80415825	0.990097468	0.317699155	3.116462387	0.00183035	0.072793456	78	57	62	96	118	114
Utrn	ENSMUSG000000036295	2654.602278	0.624321934	0.200371107	3.115828139	0.001834291	0.072793456	2123	2428	1715	3561	3268	2876
Sema3b	ENSMUSG000000057969	140.8623256	-0.668449887	0.21473904	-3.112962944	0.001835448	0.073385448	159	177	108	182	108	166
Gm10561	ENSMUSG000000097649	202.6012222	-0.793740801	0.255139721	-3.111004428	0.001845211	0.073660999	215	241	315	160	117	167
Ng1	ENSMUSG000000029126	227.1705061	-0.760569108	0.244523491	-3.110413254	0.001868258	0.073660999	283	228	347	143	188	175
Gm43858	ENSMUSG000000104546	25.9689143	1.257628255	0.404594721	3.108365454	0.001881253	0.07392814	15	12	19	37	38	35
Sult1a1	ENSMUSG000000018865	35.68150072	-1.094986167	0.352304181	-3.108070318	0.001883133	0.07392814	51	39	55	23	23	22
Sprp7	ENSMUSG000000004127	343.0187774	-1.35690253	0.436813634	-3.106497023	0.001893182	0.074163176	58	55	29	24	15	17
Nkx2-1	ENSMUSG000000057969	20.15502001	1.418001199	0.456589201	3.105639713	0.001898639	0.074163176	10	12	29	24	14	14
Adsp	ENSMUSG000000033952	71.82439524	1.205365975	0.388443211	3.103086715	0.001915252	0.074707092	55	54	21	85	102	114
Cenpf	ENSMUSG000000026605	173.6805866	0.954891266	0.308312697	3.09715194	0.001953897	0.075921734	157	126	72	216	224	247
Gbp2b	ENSMUSG000000040264	83.05693929	-3.804826358	1.228540856	-3.097028755	0.001954709	0.075921734	171	18	286	5	16	13
Pkrab2	ENSMUSG00000002997	3069.337866	-0.617605383	0.199461575	-3.096362711	0.001959106	0.07593094	3664	4436	3049	2629	2205	2433
Spry2	ENSMUSG00000002114	645.489748	0.466681344	0.15081185	3.094466071	0.00197171	0.076257574	683	689	777	956	1014	973
Rasgef1	ENSMUSG000000024479	248.581819	-1.336734407	0.427580655	-3.093436298	0.001979853	0.076359555	187	201	144	117	104	101
Zbtb42	ENSMUSG000000037638	145.37386	-1.00746182	0.32597279	-3.092229918	0.001986589	0.076440362	179	258	145	128	87	74
AT37004619Rik	ENSMUSG000000085139	45.24189541	-1.340559694	0.433575686	-3.091870089	0.001988999	0.076440362	100	44	50	20	30	27
Rim2	ENSMUSG000000043496	586.6500862	-0.7738647	0.250405723	-3.090443338	0.001998579	0.076647197	905	752	564	402	352	352
Tribp2	ENSMUSG000000029420	19.7610431	-1.576168221	0.51061369	-3.087485984	0.002018573	0.077251674	41	28	20	12	9	9
Twist1	ENSMUSG00000005799	355.4230231	-1.336734407	0.427580655	-3.085518339	0.002029959	0.077544889	128	127	335	518	478	750
Hsf2	ENSMUSG000000040612	254.9712438	-1.35065547	0.438390651	-3.080963289	0.00206332	0.078587487	489	472	138	169	145	172
Hsf11	ENSMUSG000000022769	550.3119691	-0.687412437	0.223148157	-3.080520336	0.002066932	0.078587487	627	786	624	365	379	521
Pim1	ENSMUSG000000024014	742.7542754	0.817899342	0.266090026	3.073769254	0.002113729	0.080220611	433	635	545	1251	756	836
Ankrd9	ENSMUSG000000037904	209.5628369	0.68466335	0.223213241	3.06730617	0.002159975	0.081805695	136	150	197	255	243	278
Gpr22	ENSMUSG000000040467	33.04902264	-1.292446566	0.412588226	-3.065660959	0.002171894	0.082086816	66	34	40	22	16	20
Prr11	ENSMUSG000000054776	114.6648428	-0.945911996	0.308093738	-3.052354075	0.002196035	0.082827733	129	113	211	72	81	97
Cyfl1	ENSMUSG000000025545	336.160445	0.528260617	0.172538932	3.061689883	0.002209917	0.082827733	275	280	271	389	363	439
Silc2a1	ENSMUSG000000028645	1081.289691	-0.504800047	0.165137889	-3.056839656	0.002236839	0.084019537	1294	1235	1276	1027	840	816
Ahrgef2	ENSMUSG000000028059	528.9286835	-0.558582848	0.182864344	-3.05449513	0.002254397	0.084019537	700	661	528	437	429	418
Col4a6	ENSMUSG000000031273	40.20626289	-1.531630573	0.50171996	-3.052768093	0.002267465	0.084744166	91	59	29	14	28	14
Btrn9	ENSMUSG000000040283	1606.910473	-0.95539984	0.162343422	-3.052418011	0.002270057	0.084744166	1744	2145	1752	1285	1395	1320
Frr2	ENSMUSG000000030251	794.79430774	-0.96482026	0.303498756	-3.049893537	0.002295957	0.085658467	156	158	294	328	385	266
Gm6899	ENSMUSG000000102496	16.95629486	1.548212581	0.508036404	3.047444416	0.002307964	0.085775618	11	7	8	20	27	29
Unc5b	ENSMUSG000000055667	59.71456497	-1.388013663	0.455542411	-3.046947178	0.002311783	0.085775618	142	72	45	35	36	28
Clmp	ENSMUSG000000032024	97.52784634	-1.06506613	0.349759899	-3.045142977	0.002326697	0.086116834	105	99	193	52	63	74
Galm14	ENSMUSG000000024064	13.49060295	-1.815997785	0.596827796	-3.042750014	0.00234427	0.086582311	22	15	26	8	6	4
Aldh18a1	ENSMUSG000000025007	587.8030778	-0.604322749	0.196639897	-3.042303985	0.002347754	0.086582311	746	797	584	417	498	484
Fcd1	ENSMUSG000000032051	513.0102774	0.874723039	0.297517407	3.041271295	0.002358002	0.086601498	2635	4338	3953	6225	4866	8761
Kazalid	ENSMUSG000000025213	183.774416	-1.257205705	0.415322927	-3.041000869	0.002359932	0.086601498	165	232	381	78	81	101
Digp1	ENSMUSG0000000303279	1546.16042	-0.44706297	0.147043869	-3.040417259	0.0							

Table S5. Genes differentially expressed in ABC Male vs ABC Female

Gene	ENSEMBL_Gene_ID	baseMean	log2FoldChange	lfcSE	stat	pvalue	padj	Read count							
								166836_No	166838_No	182098_Tu	184208_Tu	183159_Ba	8505_Norm	207386_No	
Ddx3y	ENSMUSG00000069045	1046.84874	12.23680254	1.023642768	11.95417281	6.17453E-33	3.9801E-29	2451	2744	2130	1	0	0	1	
Eif2s3y	ENSMUSG00000069049	398.4463562	11.55675408	1.067877975	10.82216728	2.70309E-27	1.30681E-23	818	866	1105	0	0	1	0	
Drd4	ENSMUSG00000025496	54.5839791	7.336438255	1.064060904	6.894754078	5.39581E-12	6.13789E-09	50	79	249	1	3	0	0	
Gm29650	ENSMUSG00000099876	11.55831114	1.710987222	1.187473369	6.038861511	1.55205E-09	1.00045E-06	22	24	35	0	0	0	0	
Sud3	ENSMUSG00000021384	769.1439318	4.644435614	0.556861731	8.322418751	6.81862E-17	1.51515E-13	1322	1717	2668	45	158	43	30	
Kdm5d	ENSMUSG00000056673	284.7519157	4.423946895	0.33653877	13.14543014	1.80775E-39	3.49582E-35	767	608	500	21	41	29	26	
Uty	ENSMUSG00000068457	338.1005811	4.15321738	0.832168958	4.990834301	0.01191E-07	0.000181653	908	723	570	14	132	11	10	
4930438A08Rik	ENSMUSG00000069873	12.3566045	3.727209382	0.757595106	4.917970735	8.66368E-07	0.00024638	27	34	17	4	1	2	1	
Aldh1l2	ENSMUSG00000020256	51.41029936	3.627532669	0.743368908	4.879855252	1.06164E-06	0.000293285	161	151	14	9	5	11	10	
Cowp2a	ENSMUSG00000030785	33.40694447	3.256909082	0.651811756	4.996701961	5.83191E-07	0.000179012	66	104	34	4	16	7	3	
Cacnb4	ENSMUSG00000017412	26.70626031	3.186838369	0.579601553	5.498326143	3.83413E-08	1.75172E-05	47	74	41	6	12	5	2	
Tnn	ENSMUSG00000026725	50.75434258	3.168358092	0.747366309	4.239364355	2.24154E-05	0.004291764	73	162	75	8	8	28	1	
Lrn2	ENSMUSG00000026822	15.93920059	3.068115533	0.730132013	4.202138078	2.64406E-05	0.004734332	35	43	18	0	5	5	5	
Pagr5	ENSMUSG00000032278	150.0284161	2.921961595	0.507390439	5.758803027	8.47125E-09	4.55047E-06	259	329	304	64	55	26	13	
Trih3	ENSMUSG00000032715	153.4450361	2.913239444	0.441426426	6.599603637	4.12258E-11	4.19592E-08	365	410	138	38	31	42	51	
Knk1	ENSMUSG00000033998	669.670387	2.848493889	0.304245709	9.363975577	7.67919E-21	1.65E-17	1204	1377	1374	236	211	168	118	
4632428C04Rik	ENSMUSG00000097184	14.0534001	2.797561128	0.617143972	4.533076968	5.81306E-06	0.001405162	19	35	28	3	4	6	3	
Bhlha15	ENSMUSG00000052271	58.72151174	2.704404621	0.581638533	4.649631119	3.32529E-06	0.000835123	129	169	44	11	9	20	29	
Gsta3	ENSMUSG00000025934	329.2782076	2.684706562	0.347617508	7.723162681	1.13478E-14	1.68803E-11	652	613	643	84	160	84	69	
1520401A03Rik	ENSMUSG00000043747	7.517464613	2.563030032	0.783517234	3.271185265	0.001070977	0.073950605	12	16	4	0	2	3	3	
Adcy8	ENSMUSG00000022376	70.49321408	2.505202727	0.408562646	6.131746878	8.69193E-10	6.22535E-07	141	170	90	24	13	31	24	
9330159F19Rik	ENSMUSG00000040360	266.5886506	2.482105194	0.553758741	4.48228626	7.38476E-06	0.001704018	544	430	534	154	48	128	28	
Gdf15	ENSMUSG00000038508	60.50482018	2.399121087	0.446222178	5.376516914	7.59406E-06	3.05946E-05	124	154	60	27	24	19	16	
Adamt8	ENSMUSG00000031994	31.72002932	2.396547243	0.642801487	3.728285156	0.000192787	0.022458543	38	84	56	8	1	16	19	
Tubb3	ENSMUSG00000062380	451.4934974	2.321252971	0.439600826	5.286859663	1.24434E-07	4.62751E-05	508	742	1246	212	82	192	179	
Pdgr1	ENSMUSG00000031595	77.37931562	2.227076981	0.297367842	7.489300007	6.92419E-14	9.82667E-11	135	138	148	26	33	34	26	
Derl3	ENSMUSG00000090092	49.72859925	2.06477907	0.589372336	3.503353136	0.00045944	0.043150363	87	130	48	18	8	42	16	
Foxo6	ENSMUSG00000052135	36.36172752	1.968767633	0.619807995	3.180146516	0.001472006	0.092121855	27	51	112	15	8	13	29	
4331414D18Rik	ENSMUSG00000034959	45.52840953	1.917700445	0.368056594	5.210341232	1.88494E-07	6.62744E-05	70	66	100	21	16	22	23	
Grin2d	ENSMUSG00000002771	47.85536355	1.915363823	0.559583	3.422841332	0.000619702	0.0528984	36	64	148	31	15	23	18	
Prr35	ENSMUSG00000033491	7597.575661	1.830608125	0.295724572	6.190246935	6.007E-10	4.68414E-07	12741	14450	11492	4003	2658	2969	4871	
Ampd3	ENSMUSG00000050686	342.1663572	1.757962229	0.409125643	4.296876176	1.73222E-05	0.003453366	536	485	698	196	71	211	198	
Git8d2	ENSMUSG00000020251	151.4439101	1.754613681	0.400864129	4.370778521	1.20281E-05	0.00254497	200	363	198	58	51	109	82	
Tskru	ENSMUSG00000049580	291.3594715	1.747530708	0.408062399	4.282508992	1.84798E-05	0.003632998	451	535	473	70	215	182	113	
Fgf11	ENSMUSG00000042826	270.3718814	1.727687771	0.323180877	5.345884901	8.99746E-08	3.47993E-05	364	478	508	197	103	119	124	
Acan	ENSMUSG00000033067	2627.371611	1.69465377	0.439611351	3.854890841	0.000115781	0.0150267	623	5170	3733	2343	632	1081	1308	
Prrg3	ENSMUSG00000033361	3226.380308	1.64245984	0.508820794	3.227973107	0.001246707	0.08172481	6570	7038	2218	1914	722	2371	1751	
Jam2	ENSMUSG00000053062	815.5511485	1.63592875	0.271365031	6.028517166	1.65471E-09	1.03222E-06	1244	1671	1080	489	356	479	389	
Chac1	ENSMUSG00000027313	66.34990642	1.626814943	0.39461149	4.122573682	3.74663E-05	0.006245886	125	120	80	37	20	33	50	
Hhex	ENSMUSG00000024986	910.2269489	1.544843719	0.384229252	4.020636101	5.80427E-05	0.008710011	1286	1424	1663	258	456	521	764	
Zbtb16	ENSMUSG00000066687	114.7796148	1.538822023	0.351868901	4.37282263	1.22392E-05	0.00254497	256	156	148	48	74	48	48	
Spag	ENSMUSG00000026207	184.8488817	1.533969187	0.249712489	6.142941402	8.10072E-10	6.02506E-07	290	311	284	93	127	101	88	
Pdp1	ENSMUSG00000049225	2641.631006	1.507077469	0.225806227	6.67420687	2.48573E-11	2.6705E-08	4488	4097	4004	1526	1263	1795	1318	
Zfp69	ENSMUSG00000064141	39.83588766	1.475748177	0.431881935	3.417017608	0.000633112	0.053697881	46	49	94	25	16	25	24	
Shh	ENSMUSG00000026233	7053.141673	1.468141294	0.412956635	3.555194833	0.000376999	0.038036067	7996	8717	16604	6033	2429	4147	3446	
Ppp13b	ENSMUSG00000046794	125.275267	1.452688477	0.354097683	4.102507713	4.08696E-05	0.006687622	216	236	139	70	51	66	100	
Pitpm3	ENSMUSG00000040543	41.22092005	1.41782774	0.433615105	3.269783969	0.001076296	0.073950605	72	78	43	33	17	28	17	
Penk	ENSMUSG00000045573	124.4538138	1.399609794	0.341292807	4.100962212	4.11535E-05	0.006687622	220	146	211	50	90	64	90	
Star5	ENSMUSG00000046027	325.4734983	1.391621343	0.244508343	5.691508614	1.25923E-08	6.40809E-06	474	437	599	170	207	179	212	
Maf2	ENSMUSG00000015222	423.8694955	1.38128227	0.436264312	3.166159212	0.001544662	0.09482755	743	806	415	338	112	310	244	
Nsp3	ENSMUSG00000024664	266.2092801	1.366824238	0.415621029	3.288631308	0.001006758	0.07061468	430	522	276	140	95	141	260	
Amotl1	ENSMUSG00000013076	3306.572111	1.298425647	0.392591964	3.30731591	0.000941946	0.068222291	5718	6185	3104	2363	2778	1813	1184	
Igfb8	ENSMUSG00000025321	361.579721	1.288410095	0.376475816	3.422294406	0.00062095	0.0528984	643	561	434	300	127	288	178	
Mmp24	ENSMUSG00000027612	114.3352986	1.286583568	0.346668059	3.71128385	0.000206211	0.023595874	177	230	111	68	72	83	60	
Tro	ENSMUSG00000025272	192.9562521	1.280605083	0.364774934	3.510671822	0.000446976	0.042579403	374	332	165	111	152	105	111	
Hivep3	ENSMUSG00000028634	271.0569464	1.274498075	0.30313384	4.204407119	2.61767E-05	0.004734332	447	444	332	170	231	141	132	
Hnr3a	ENSMUSG00000032269	229.0798043	1.271010657	0.374596358	3.390139121	0.000691281	0.056885093	286	353	395	114	131	230	95	
Kcnk3	ENSMUSG00000062785	36.3853384	1.269830853	0.382055788	3.323679144	0.000883883	0.065570835	49	64	50	20	31	24	20	
Cers6	ENSMUSG00000027035	81.4612258	1.264629263	0.386108575	3.275320326	0.00105422	0.073681429	107	181	79	54	55	55	40	
Scla11	ENSMUSG00000047996	88.99215241	1.249593755	0.299600503	4.170033827	3.04549E-05	0.005403092	103	166	130	54	57	56	57	
Mnana1	ENSMUSG00000042763	266.7406834	1.246401434	0.361526378	3.447608555	0.000565573	0.049940877	394	473	329	128	112	178	253	
Smarca1	ENSMUSG00000031099	1112.89876	1.216569304	0.313872628	3.875996808	0.000106189	0.013969281	2050	1826	1074	834	721	731	554	
Ulf3	ENSMUSG00000054263	1052.650117	1.194167183	0.326104203	3.661919012	0.000250333	0.027355237	1753	1857	1046	864	488	648	712	
Adamt4	ENSMUSG00000015850	100.5890668	1.182641227	0.351251656	3.36934241	0.000760088	0.059750341	129	163	152	80	36	65	79	
Mpp3	ENSMUSG00000052373	103.8797507	1.171005225	0.282430885	4.146165619	3.38089E-05	0.005837474	152	139	166	68	67	83	53	
Atf5	ENSMUSG00000038539	1329.517493	1.161333104	0.335401354	3.46251227	0.000351558	0.048359234	1931	2566	1333	685	1112	698	981	
2010077H06Rik	ENSMUSG00000044694	311.9276151	1.160570496	0.29138124											

Table S5. Genes differentially expressed in ABC Male vs ABC Female

Gene	ENSEMBL_Gene_ID	baseMean	log2FoldChange	lfcSE	stat	pvalue	padj	Read count							
								166836_No	166838_No	182098_Tu	184208_Tu	183159_Bs	8505_Norm	207286_No	
S930412G12Rk	ENSMUSG00000027591	319.1366747	-0.949088398	0.286609444	-3.311434496	0.00092819	0.067478691	214	169	242	491	434	383	300	
Opn3	ENSMUSG000000026526	386.3840882	-0.95362147	0.281341218	-3.388633039	0.000702419	0.05731387	290	288	177	532	409	527	481	
Shtn1	ENSMUSG000000041362	405.8820789	-0.958357908	0.222406826	-4.309031009	1.63971E-05	0.003337767	285	281	226	550	455	497	548	
Spint2	ENSMUSG000000074227	2218.808353	-0.963194831	0.286503753	-3.361892543	0.000774102	0.06036126	1110	1408	1797	2324	3493	2416	2984	
Fam110b	ENSMUSG000000049119	173.952517	-0.963408713	0.251511173	-3.830480781	0.000127893	0.016151143	120	115	104	253	203	237	185	
Tacc3	ENSMUSG000000037313	163.9177864	-0.975009148	0.303239179	-3.215313907	0.001303019	0.083713591	121	103	92	238	253	149	192	
Zfp385a	ENSMUSG000000005512	730.6092465	-0.976267955	0.217829809	-4.481792272	7.1408E-06	0.001704018	448	452	510	936	1075	787	906	
Skap1	ENSMUSG000000057058	558.7795622	-0.998871677	0.255905379	-3.903285197	9.48958E-05	0.012743711	363	377	327	663	918	576	688	
Mtpp	ENSMUSG000000028158	137.0157084	-0.999828146	0.262945066	-3.802422163	0.000143288	0.017762237	98	84	80	205	159	153	180	
Actg1	ENSMUSG000000062825	21639.2174	-1.002721997	0.211796739	-4.734359932	2.19747E-06	0.000566597	12506	15143	13605	23615	31944	27382	27280	
Cdca7	ENSMUSG000000056122	69.90376322	-1.039467943	0.312609392	-3.325133437	0.000883762	0.065570835	45	38	48	114	84	81	79	
Cadm1	ENSMUSG000000032076	1698.050422	-1.066350123	0.265536171	-4.015837542	5.92351E-05	0.008811442	1069	976	1089	2882	2063	2156	1651	
Ndrp2	ENSMUSG00000004558	2671.181103	-1.082476522	0.336268151	-3.219087264	0.001285993	0.083172378	1528	1378	1983	2465	5210	3035	3099	
Rumx2	ENSMUSG000000039153	115.684876	-1.095542545	0.323169889	-3.389997885	0.000698932	0.057270932	75	58	77	122	210	137	131	
Mocos	ENSMUSG000000039616	453.1324143	-1.100357891	0.326652696	-3.368588592	0.000755547	0.089635756	338	244	241	638	782	545	385	
Hmgcn2	ENSMUSG00000003038	1120.513022	-1.120323826	0.342979646	-3.266444054	0.001089073	0.074418723	578	496	937	1133	1882	1172	1644	
Cd24a	ENSMUSG000000047139	1975.508646	-1.121037464	0.336667649	-3.329804529	0.000689007	0.065139807	1293	1291	962	3213	2571	3023	1476	
6030419C18Rk	ENSMUSG000000066607	146.0549978	-1.125807903	0.32977766	-3.413839205	0.000640544	0.054090976	77	73	111	167	250	141	203	
Slain1	ENSMUSG0000000055717	213.2783737	-1.155338692	0.294941675	-3.917176823	8.9592E-05	0.012287452	138	97	142	291	211	343	271	
Tubb6	ENSMUSG000000001473	1171.653918	-1.18940555	0.373297306	-3.186215194	0.001441473	0.090798735	807	667	555	1317	1723	870	2262	
Sema5a	ENSMUSG00000002231	1014.235419	-1.197500495	0.345278909	-3.468212111	0.000523934	0.047791638	697	535	519	1605	901	1848	996	
Ica11	ENSMUSG000000026018	32.28923334	-1.19817087	0.36946706	-3.242970751	0.00182904	0.078744991	19	17	19	44	36	44	46	
Cspg5	ENSMUSG000000032482	1469.532261	-1.241490791	0.34377026	-3.611396725	0.000304552	0.031494297	863	767	846	1795	3099	1450	1466	
Dusp5	ENSMUSG000000034765	137.466031	-1.249090096	0.314010849	-3.9778565	6.95393E-05	0.009961121	72	83	76	124	172	220	215	
Lipa	ENSMUSG000000024781	3820.166664	-1.251554921	0.345312941	-3.624407817	0.000289624	0.030218402	2240	2526	1641	3818	3493	6841	6183	
Chaf1b	ENSMUSG000000022945	76.6893586	-1.255356235	0.390770875	-3.212512513	0.001315794	0.084254396	51	30	48	119	118	61	111	
Nct19	ENSMUSG000000036902	152.7197179	-1.262868823	0.396154234	-3.187819594	0.001433499	0.090591543	79	85	91	266	98	255	195	
Lrrn1	ENSMUSG000000034648	1114.383769	-1.272944181	0.386146497	-3.295247545	0.00097889	0.070062954	787	680	381	1699	844	1849	1561	
Utm2a	ENSMUSG00000001239	105.0650611	-1.282452128	0.386793092	-3.315602693	0.000914457	0.066731232	70	52	50	79	178	177	129	
Fbln1	ENSMUSG000000006369	4019.559425	-1.299757973	0.307524869	-4.226513376	2.3734E-05	0.00449969	2630	2294	1647	7133	4147	5746	4541	
Cenpa	ENSMUSG000000029177	103.0741877	-1.329454857	0.390886446	-3.401128052	0.000671084	0.055937152	61	60	45	137	206	81	132	
Pak1	ENSMUSG000000030774	407.0365893	-1.329947739	0.26779558	-4.966279655	6.82495E-07	0.000203048	233	218	205	699	437	586	471	
Rads1	ENSMUSG000000027323	60.49966207	-1.353393813	0.426117919	-3.176101621	0.001492687	0.093101751	29	38	29	131	70	52	74	
Man1a	ENSMUSG000000003746	500.0094602	-1.359843321	0.405632666	-3.352379427	0.00080120	0.061974524	285	281	226	345	584	689	1090	
Tmem132a	ENSMUSG000000024736	514.7244057	-1.388574292	0.402652273	-3.448569359	0.000563565	0.049940877	303	288	210	389	1036	510	866	
Dlgap5	ENSMUSG000000037544	47.93097834	-1.398117705	0.415800112	-3.36247554	0.00077247	0.06036126	30	24	20	79	86	40	57	
Pla2g2f	ENSMUSG000000028749	528.5872363	-1.41696053	0.407219338	-3.479600298	0.000502162	0.04624198	259	384	169	589	886	967	446	
Cdck1c	ENSMUSG000000037664	7443.987207	-1.417597972	0.440767791	-3.21620096	0.001298998	0.083713591	2778	3558	5086	5146	14666	7090	13783	
Adm5	ENSMUSG000000031554	29.66136183	-1.419464127	0.430848856	-3.294575596	0.000985704	0.070079225	20	12	13	35	53	34	40	
Efnas5	ENSMUSG000000048915	221.2697193	-1.424518045	0.364232825	-3.911009514	9.19112E-05	0.012516745	83	108	147	333	416	261	201	
Gna11	ENSMUSG000000057614	552.6832287	-1.424865593	0.332828563	-4.281079665	1.85899E-05	0.00362998	385	299	161	757	773	767	728	
Rbm24	ENSMUSG000000038132	4565.054604	-1.443616081	0.329674828	-4.378909033	1.19275E-05	0.00254497	2186	2554	2167	8063	3793	7778	5414	
Z101417H13Rk	ENSMUSG000000040204	70.81637147	-1.444038613	0.427159664	-3.80559387	0.000723384	0.058044845	35	33	39	113	123	45	108	
Ccn1	ENSMUSG000000002068	54.58368896	-1.444661106	0.356068352	-4.057257818	4.96523E-05	0.00774335	30	31	22	96	59	67	77	
Ube2c	ENSMUSG000000001403	116.2533301	-1.44641318	0.45775553	-3.159794009	0.001578807	0.096617004	52	49	75	179	227	65	166	
Car8	ENSMUSG0000000041261	68.16964762	-1.446473761	0.347246669	-4.165551153	3.10601E-05	0.00546037	32	31	41	80	78	90	127	
Pknox1	ENSMUSG000000029053	170.1708166	-1.44975277	0.408209074	-3.551495696	0.000383048	0.038182408	109	88	60	328	238	245	123	
Prid1	ENSMUSG000000045658	3544.42227	-1.452348997	0.403025025	-3.603619884	0.000313816	0.032279638	2099	1483	1755	5623	2089	5834	5927	
Rspg1	ENSMUSG000000024033	128.3162066	-1.457102518	0.401957274	-3.625019412	0.000288941	0.030218402	84	44	65	111	175	158	267	
Par1p	ENSMUSG000000003565	35.90603645	-1.461106099	0.439483727	-3.324596858	0.000885466	0.065570835	19	17	17	77	44	38	38	
Cdk1	ENSMUSG000000019942	176.8608331	-1.468324943	0.391010213	-3.755208675	0.000173197	0.020547766	90	76	97	312	277	118	268	
Etv4	ENSMUSG000000017724	162.6402483	-1.468713891	0.387045466	-3.794680518	0.000147834	0.018208968	90	81	72	224	348	195	129	
Rfbp3	ENSMUSG000000025576	237.3503219	-1.470473288	0.439380745	-3.346694879	0.000817812	0.062509262	80	111	163	312	549	205	242	
Cdca8	ENSMUSG000000028873	120.2738062	-1.530180785	0.406273946	-3.766376848	0.000165634	0.020018906	62	44	68	220	194	85	170	
Acot7	ENSMUSG000000028937	937.6900933	-1.534985662	0.377414133	-4.0671123	4.75993E-05	0.00748354	448	509	393	1154	2168	853	1039	
Tk1	ENSMUSG000000025574	92.48772311	-1.538418464	0.438875773	-3.505362019	0.000455987	0.043150363	59	30	45	179	95	77	164	
Lars2	ENSMUSG000000035202	15574.33999	-1.554442719	0.493167647	-3.151955991	0.001621807	0.098315068	7448	7564	7162	8979	41139	13595	23133	
Gm37691	ENSMUSG0000000104348	30.33635946	-1.556370042	0.451669116	-4.445819044	0.000569301	0.049942759	16	17	10	57	39	43	30	
Gm42528	ENSMUSG0000000107134	118.0272115	-1.562460027	0.348231952	-4.486842749	7.22864E-06	0.001704018	75	55	37	171	146	137	206	
Klf23	ENSMUSG000000032254	100.3888433	-1.57300211	0.477292727	-3.295675845	0.000981852	0.070062954	64	41	36	231	156	72	102	
Klf2c	ENSMUSG000000028678	48.64894974	-1.582422605	0.466082862	-3.395152953	0.000685903	0.056683703	27	29	13	99	59	43	72	
Ptk	ENSMUSG000000022033	136.8594079	-1.587127904	0.424788957	-3.736273924	0.000186767	0.021889117	87	55	49	103	148	118	197	
Hs3st1	ENSMUSG000000051022	804.1151066	-1.591384347	0.263078632	-6.049082483	1.45673E-09	9.71388E-07	430	342	350	1068	870	1160	1408	
C1stn3	ENSMUSG000000008153	214.2683954	-1.593169908	0.39093414	-4.075289784	4.59571E-05	0.007248574	120	106	73	305	174	446	275	
Hlfsn2	ENSMUSG000000062184	274.8881146	-1.605418655	0.366840354	-4.376341471	1.20688E-05	0.00254497	144	115	121	426	579	253	287	
Cdca3	ENSMUSG000000023505	13													

Table S5. Genes differentially expressed in ABC Male vs ABC Female

Gene	ENSEMBL_Gene_ID	baseMean	log2FoldChange	lfcSE	stat	pvalue	padj	Read count									
								166836_No	166838_No	182098_Tu	184208_Tu	183159_Ba	8505_Norm	207386_No			
Emb	ENSMUSG00000021728	155.8826013	-1.869491062	0.513453283	-3.641014919	0.000271565	0.029078694	82	45	59	74	215	285	332			
Kif22	ENSMUSG00000030677	116.7549732	-1.87577641	0.453142352	-4.13948869	3.48081E-05	0.00956802	57	45	37	231	221	74	153			
Rem2	ENSMUSG00000002176	14.01369658	-1.89369038	0.582350243	-3.252285135	0.001144811	0.077406846	8	4	13	27	17	21	21			
Ncapg	ENSMUSG00000015880	50.83331488	-1.897801749	0.540205372	-3.511321577	0.000442875	0.042397587	31	16	13	119	56	36	85			
100a10	ENSMUSG000000041959	2051.755427	-1.914076643	0.607987351	-3.148217868	0.001642692	0.098906885	703	828	852	1137	7194	1337	2312			
Birc5	ENSMUSG00000017716	97.31256043	-1.93086711	0.510567521	-3.781452272	0.000155916	0.01896293	35	35	42	125	267	60	118			
Ippp5j	ENSMUSG000000034570	91.70348421	-1.940385187	0.442572132	-4.38433658	1.1634E-05	0.00254497	30	22	53	201	98	136	103			
Mycbpap	ENSMUSG000000039110	29.52204944	-1.982556933	0.590825575	-3.355570605	0.000792014	0.061509935	16	4	13	36	72	25	40			
Gm24187	ENSMUSG000000088609	453.0040442	-1.98324731	0.544782099	-3.640441408	0.000272171	0.029078694	146	167	192	204	1289	481	692			
Alyref2	ENSMUSG000000060244	441.4298057	-1.992852566	0.365340782	-5.454777203	4.90343E-08	2.10717E-05	157	137	196	867	352	648	733			
Ppp1r14c	ENSMUSG000000040653	33.95426671	-1.999100748	0.545923548	-3.661869427	0.000250381	0.027355237	14	7	16	25	40	63	72			
Mxd3	ENSMUSG000000021485	45.57574093	-2.008695854	0.523632198	-3.836081624	0.000125013	0.015969121	23	11	16	106	72	31	59			
Crybb1	ENSMUSG000000029343	66.87009272	-2.009177723	0.576168758	-3.4871341	0.000488226	0.04539098	23	17	33	53	193	46	104			
Mir6236	ENSMUSG000000098973	1713.063451	-2.027893119	0.558517443	-3.630850108	0.000282489	0.029851238	639	570	654	783	5052	1484	2810			
Gm24270	ENSMUSG000000076281	713.6372043	-2.034749919	0.553328043	-3.67729405	0.000235271	0.026502196	236	268	269	303	2048	721	1148			
Hist1h2ap	ENSMUSG000000094777	110.003827	-2.067450657	0.655266665	-3.155128692	0.001604273	0.097557975	30	31	56	61	377	67	148			
Scara5	ENSMUSG000000022032	105.9674828	-2.067792976	0.563047735	-3.672500302	0.000240189	0.026848395	64	36	12	102	255	132	140			
Gm24245	ENSMUSG000000087943	448.185255	-2.069268751	0.571070256	-3.623492436	0.000290652	0.030218402	145	159	171	188	1346	438	690			
Shisa9	ENSMUSG000000021494	140.3342313	-2.07847188	0.467700406	-4.443989519	8.3059E-06	0.002009011	65	32	50	352	107	188	188			
Adh1	ENSMUSG000000074207	47241.2675	-2.078579631	0.598304764	-3.474115127	0.000512541	0.046974025	8318	6252	35293	39932	66282	74074	100538			
RP23-291B1.2	ENSMUSG000000108434	36.73751222	-2.082498913	0.608410613	-3.422851064	0.00061968	0.0528984	12	6	21	79	76	25	39			
Serpinb1b	ENSMUSG000000051029	254.6423568	-2.09009775	0.617520043	-3.384521357	0.000713025	0.057934756	104	43	120	606	80	395	434			
D630024D03Rik	ENSMUSG000000085772	49.04756164	-2.097089417	0.650471761	-3.223951513	0.001264348	0.082323107	15	16	19	22	123	33	114			
Fndc7	ENSMUSG000000045326	39.76457286	-2.099994661	0.415743677	-5.051187974	4.39071E-07	0.000143911	20	12	9	56	66	52	64			
Gm25911	ENSMUSG000000088246	239.1612745	-2.111669712	0.577107488	-3.659057896	0.000253144	0.027501694	85	80	82	105	753	248	321			
Cenpm	ENSMUSG000000068101	40.6497048	-2.13151597	0.480061531	-4.440089097	8.99216E-06	0.002021982	13	13	15	64	84	29	66			
Naip5	ENSMUSG000000071203	117.3526326	-2.140966332	0.445596734	-4.804712787	1.5497E-06	0.000416224	48	38	33	74	226	205	197			
Gm23935	ENSMUSG000000076258	2305.92874	-2.173982613	0.644946016	-3.370797801	0.000749508	0.059401619	633	727	920	915	8354	1697	2875			
Dmer	ENSMUSG000000036766	168.3174876	-2.217798379	0.426801021	-5.19632866	2.02362E-07	7.0191E-05	86	30	42	312	182	190	331			
Fam194a	ENSMUSG000000046500	164.3353684	-2.228942376	0.439185443	-5.075173623	3.87142E-07	0.000129079	41	73	45	337	336	184	136			
Ush1g	ENSMUSG000000045288	11.8689791	-2.230086498	0.691576289	-3.224647294	0.001261299	0.082323107	3	5	4	14	15	30	13			
Mmp19	ENSMUSG000000025355	226.1860891	-2.258726748	0.458016892	-4.931535905	8.15856E-07	0.000235478	86	76	52	153	385	288	543			
Mme11	ENSMUSG000000058183	21.70531804	-2.274134888	0.662951885	-3.43028437	0.000602949	0.052052802	7	7	7	14	67	25	26			
Gulo	ENSMUSG000000034450	50.30384936	-2.278974873	0.552429213	-4.125369947	3.70139E-05	0.006224134	14	25	8	77	119	74	35			
Ahmh2	ENSMUSG000000023047	205.1019299	-2.301715859	0.371905746	-6.188976329	6.05652E-10	4.68414E-07	71	61	57	452	353	243	198			
Eyst3	ENSMUSG000000037681	31.03648417	-2.35340642	0.743123308	-3.1669124	0.0001540667	0.09482755	13	6	108	27	42	13	43			
Fmo1	ENSMUSG000000040181	270.8462693	-2.385651942	0.582839211	-4.09315622	4.25541E-05	0.00685759	65	77	95	112	650	243	654			
Tmem144	ENSMUSG00000007956	148.5658883	-2.389920292	0.434885623	-5.495541733	3.89513E-08	1.75172E-05	39	26	65	128	233	270	280			
Ly6k	ENSMUSG000000044678	489.0540166	-2.44829952	0.594190934	-4.120391911	3.78228E-05	0.006251438	189	180	45	981	290	553	1186			
Gabrg3	ENSMUSG000000050526	185.1095907	-2.456758825	0.294609873	-8.339024085	7.49062E-17	1.44854E-13	67	51	38	316	258	269	297			
Awcc2	ENSMUSG000000050830	15.02999312	-2.485549885	0.649395463	-3.82749053	0.000129456	0.016151143	4	6	3	31	20	29	13			
Fhdcl1	ENSMUSG000000041842	44.16922598	-2.529814669	0.62072919	-4.075552927	4.59051E-05	0.007284574	13	8	15	38	25	110	101			
Lingo3	ENSMUSG0000000051067	70.61842061	-2.544562536	0.475576101	-5.137781112	7.81762E-08	3.08525E-05	19	15	21	53	135	91	160			
Baalc	ENSMUSG000000022296	8.472964165	-2.554891508	0.79861601	-3.199148871	0.00137834	0.08767873	4	2	1	13	9	12	18			
Cela1	ENSMUSG000000023031	633.9321016	-2.571735783	0.447421654	-5.747910192	0.93576E-09	4.72253E-06	166	136	195	479	1663	1101	697			
2810459M11Rik	ENSMUSG000000026227	18.60120055	-2.587041103	0.591435529	-4.374172633	1.21894E-05	0.00254497	4	8	35	32	29	69	21			
Cdo1	ENSMUSG000000033022	142.8315765	-2.591232582	0.778117758	-3.330129093	0.000868057	0.065139807	64	30	16	70	349	44	426			
Rassf10	ENSMUSG000000098132	68.24363666	-2.6120476	0.520193498	-5.021192996	5.13292E-07	0.000160078	15	8	29	119	144	58	104			
Cited4	ENSMUSG000000070803	46.50323177	-2.648380369	0.605216973	-4.375918865	1.20923E-05	0.00254497	11	14	10	28	143	52	68			
Hadr	ENSMUSG000000022865	120.0945972	-2.710511317	0.497652054	-5.446599276	5.1342E-08	2.15837E-05	44	33	9	247	191	174	142			
Cxcl15	ENSMUSG000000049511	154.601061	-2.723771806	0.503440841	-5.410311568	6.29152E-08	2.58863E-05	22	66	22	255	297	293	127			
4930245O10Rik	ENSMUSG000000105838	15.0433991	-2.754441472	0.700401513	-3.929805149	8.50147E-05	0.011742963	3	1	7	32	15	25	22			
Egff6	ENSMUSG000000000402	2058.92027	-2.763894532	0.506075537	-5.461426858	4.72323E-08	2.07586E-05	500	673	260	5285	1825	4142	1728			
Cdh12	ENSMUSG000000040452	61.23208544	-2.77561066	0.526783605	-5.268972697	1.37186E-07	4.91279E-05	12	15	16	128	55	52	152			
Ggt6	ENSMUSG0000000040471	17.04239719	-2.791458036	0.811953755	-3.437951999	0.000586132	0.05082786	5	4	3	7	59	17	24			
Galm13	ENSMUSG000000060988	9.884997685	-2.800790278	0.88324904	-3.171095226	0.001518654	0.093826586	3	1	3	5	15	26	17			
D43030616Rik	ENSMUSG000000097466	14.10555832	-2.813288318	0.724927936	-3.880783424	0.000104121	0.013790978	2	5	3	21	11	36	21			
D430041D05Rik	ENSMUSG000000068373	155.8359259	-2.860962051	0.504460578	-5.671330184	1.41693E-08	7.02579E-06	34	32	36	76	310	283	320			
Mfsd4	ENSMUSG000000059149	139.5038219	-2.895041787	0.514953987	-5.621942655	1.88822E-08	9.1286E-06	28	37	24	72	249	238	328			
Ctd1d1	ENSMUSG000000028076	580.9496784	-2.897799452	0.6037118	-4.799971525	1.58688E-06	0.000420372	112	113	147	240	1913	531	1012			
Sstr2	ENSMUSG000000047904	22.61254183	-2.914115423	0.900577733	-3.235828864	0.001212901	0.079779168	7	6	2	43	9	83	8			
Mme	ENSMUSG000000027820	111.7661109	-2.923466112	0.553890718	-5.278055792	1.30562E-07	4.76378E-05	17	15	38	76	218	291	127			
4930486L24Rik	ENSMUSG000000050345	79.45703757	-2.926217556	0.391501956	-7.474336994	7.75941E-14	9.37821E-11	17	12	20	130	83	146	147			
Cdh9	ENSMUSG000000025370	15.46659329	-2.948628556	0.741230012	-3.978021004	6.94912E-05	0.00961121	3	5	2	10	24	40	24			
Dsp	ENSMUSG0000000054889	330.654795	-2.984161892	0.480539955	-6.210018259	5.29784E-07	4.65681E-07	55	120	25	630	520	440	524			
Epn3	ENSMUSG000000010080	95.20776037	-3.010785114	0.493756336	-6.097714386	1.07569E-09	7.43102E-07	24	25	8	165	176	80	189			
Hras1s	ENSMUSG000000022525	22.52442587	-3.108118811	0.785790595													

**Table S5. Genes differentially expressed in ABC Male vs ABC Female**

Gene	ENSEMBL_Gene_ID	baseMean	log2FoldChange	lfcSE	stat	pvalue	padj	Read count						
								166836_No	166838_No	182098_Tu	184208_Tu	183159_B2	8505_Norm	207286_No
Apoc1	ENSMUSG00000040564	486.444706	-5.378689002	1.650847625	-3.258137772	0.001121459	0.076093975	6	48	7	543	202	3	2597
Cidea	ENSMUSG00000024526	60.85767602	-5.767356799	1.566332448	-3.682077075	0.000231341	0.026161876	3	1	2	3	291	7	119
Folr1	ENSMUSG00000001827	21.63718195	-5.856602024	1.498465116	-3.908400645	9.29091E-05	0.012564175	2	0	0	6	107	3	33
Orm2	ENSMUSG000000061540	6.321953858	-5.945781945	1.675771518	-3.548086288	0.000388041	0.038481735	0	0	0	6	29	1	8
Orm1	ENSMUSG000000039196	23.08098032	-5.947564422	1.582827191	-3.757557652	0.00017158	0.02048155	0	0	2	8	118	1	33
Adig	ENSMUSG000000044405	36.45441964	-6.032101992	1.810896968	-3.331002315	0.000865339	0.065139807	3	0	0	9	172	5	66
Oxtr	ENSMUSG000000049112	315.5640977	-6.214215352	0.622140777	-9.988439241	1.71257E-23	4.73109E-20	4	13	5	175	698	593	721
Tmxc2	ENSMUSG000000050612	29.00536007	-6.28462254	1.248323449	-5.03445044	4.79222E-07	0.000154453	0	1	1	12	108	38	42
Mgst2	ENSMUSG000000074604	564.4611447	-6.825243121	0.707233244	-9.650625415	4.88568E-22	1.18099E-18	8	11	7	327	2438	669	492
Ucp1	ENSMUSG000000031710	46.68430773	-6.982986604	2.210874044	-3.158473284	0.001585978	0.096749689	2	0	0	2	180	2	141
170012SH20Rik	ENSMUSG000000018479	25.39644423	-6.995469086	1.472460062	-4.750871867	2.02541E-06	0.00052929	0	0	1	5	104	32	36
Ly6h	ENSMUSG000000022577	13.21714983	-7.015838199	1.538218648	-4.561014918	5.0907E-06	0.001246125	0	0	0	6	66	10	12
Cyp2f2	ENSMUSG000000052974	1249.062152	-7.642574958	0.710533984	-10.75610053	5.54679E-27	2.14528E-23	17	10	6	530	2029	1242	4909
Xist	ENSMUSG000000086503	979.6871197	-9.79681836	0.793335221	-12.34890133	4.93812E-35	4.77467E-31	2	1	3	3453	1356	1215	828
Akr1d1	ENSMUSG000000038641	2196.634761	-14.40659791	1.361935368	-10.57803347	3.76783E-26	1.21437E-22	0	0	0	749	7326	2999	4302

**Table S6. GSEA report for male ABC\_Hoxb9 tumours compared to male ABC tumours**

NAME	SIZE	ES	NES	NOM p-val	FDR q-val	FWER p-val	RANK AT MAX
HALLMARK_G2M_CHECKPOINT	189	0.6468555	1.697571	0	0.04399998	0	2163
HALLMARK_MYC_TARGETS_V2	57	0.64348674	1.5850172	0	0.06618747	0.115	3399
HALLMARK_E2F_TARGETS	191	0.62671053	1.5686973	0	0.06945833	0.163	2932
HALLMARK_SPERMATOGENESIS	95	0.4395258	1.4903258	0.17158672	0.20406246	0.543	1001
HALLMARK_MYC_TARGETS_V1	191	0.51113737	1.4716262	0	0.18284994	0.543	4372
HALLMARK_TNFA_SIGNALING_VIA_NFKB	183	0.3626254	1.3311056	0	0.34334636	0.808	1244
HALLMARK_TGF_BETA_SIGNALING	52	0.30804762	1.1985636	0.102345414	0.6009473	0.947	2640
HALLMARK_REACTIVE_OXIGEN_SPECIES_PATHWAY	45	0.4346205	1.18057	0.31212723	0.59848905	0.947	4305
HALLMARK_KRAS_SIGNALING_DN	123	0.31556696	1.1704465	0.17073171	0.5797694	1	1550
HALLMARK_MITOTIC_SPINDLE	198	0.45075125	1.1701288	0.10331384	0.5261925	1	1201
HALLMARK_UV_RESPONSE_UP	140	0.2766306	1.1253206	0.11044177	0.5694552	1	3332
HALLMARK_OXIDATIVE_PHOSPHORYLATION	189	0.46338195	1.1154771	0.30604288	0.53661823	1	4469
HALLMARK_FATTY_ACID_METABOLISM	142	0.30793777	1.1061171	0.41351888	0.50957435	1	2996
HALLMARK_ESTROGEN_RESPONSE_LATE	172	0.28641844	1.0496027	0.3592233	0.5719434	1	1172
HALLMARK_GLYCOLYSIS	180	0.19225512	0.95989305	0.52642274	0.70349604	1	2646
HALLMARK_PI3K_AKT_MTOR_SIGNALING	99	0.21583931	0.9114872	0.62355214	0.7756091	1	1283
HALLMARK_DNA_REPAIR	136	0.2382726	0.8295817	0.6276803	0.8557615	1	4594
HALLMARK_P53_PATHWAY	187	0.18670382	0.827854	0.6312849	0.81244224	1	3007
HALLMARK_ADIPOGENESIS	187	0.17481901	0.7299593	0.9116466	0.8920309	1	4100
HALLMARK_ALLOGRAFT_REJECTION	169	0.16238579	0.46229643	0.915547	0.987912	1	1807





