

---

**Supplementary information**

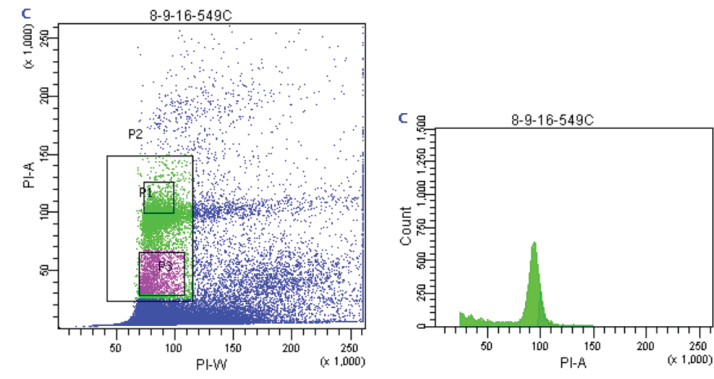
---

**Genomic mechanisms of climate adaptation  
in polyploid bioenergy switchgrass**

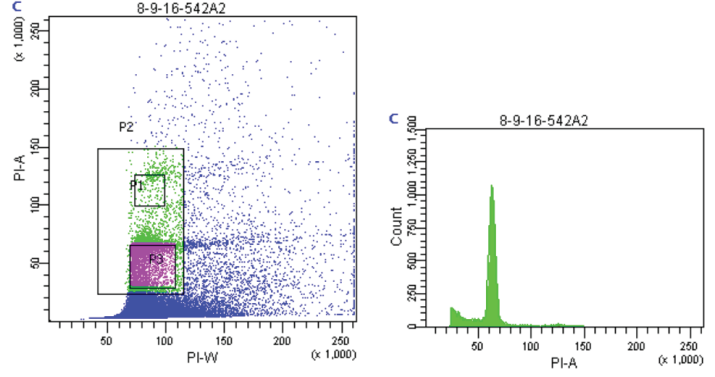
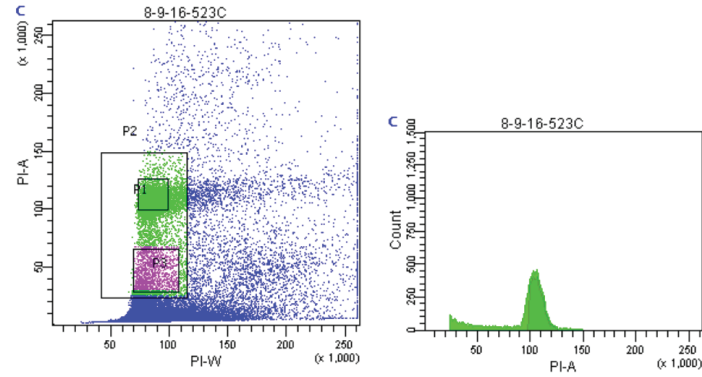
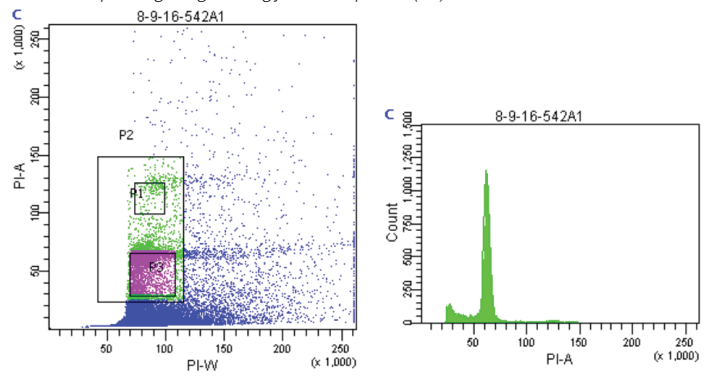
---

In the format provided by the  
authors and unedited

**a** Example of gating strategy for octoploids (8x)



**b** Example of gating strategy for tetraploids (4x)



**Supplementary Figure 1 | Gating strategy for determination of ploidy.** Plots, generated in ICMB Flow Cytometry Lab, showing the observations overall, and those in the P1 and P3 gates. Those green and purple points (respectively) were used to determine ploidy. **a**, Histograms demonstrate clear peaks of ~100-120 for two representative 8x genotypes and **b**, ~60 for two representative 4x genotypes.