

Table 1 Sample distribution of salaried workers living in Catalonia (2002-2014) and their SA episodes due to mental disorders (2012-2014), according to employment related characteristics.

Age in 2002 (mean (SD))	Women (N=879)			Men (N=500)		
	23.2 (3.0)			23.1 (3.0)		
2002-2011	N (%)	Episodes* (%)	MD (P25; P75)	N (%)	Episodes* (%)	MD (P25; P75)
Company size						
Small-medium (≤ 100 workers)	576 (65.5)	694 (65.2)	26 (9;72.5)	367 (73.4)	442 (70.4)	22 (9;55)
Big (>100 workers)	303 (34.5)	370 (34.8)	18 (8;58)	133 (26.6)	186 (29.6)	21 (6;58)
Company ownership						
Private	738 (84.0)	892 (83.8)	22 (8; 64)	449 (89.8)	449 (71.5)	22 (8;54)
Public	100 (11.4)	125 (11.7)	29 (10.5; 76)	32 (6.4)	39 (6.2)	35.5 (6;75.5)
2012-2014						
Working time (%weekly hours)						
Full-time (>87.5%)	748 (85.1)	902 (84.8)	24 (9; 66.5)	476 (95.2)	595 (94.7)	22 (8;57.5)
Part-time (50%-87.5%)	116 (13.2)	145 (13.6)	18 (8;45)	21 (4.2)	29 (4.6)	16 (6;50)
Short part-time (37.5%-49%)	5 (0.6)	7 (0.7)	75 (24;103)	1 (0.2)	2 (0.3)	11 (11;11)
Marginal part-time ($\leq 37.5\%$)	10 (1.1)	10 (0.9)	17.5 (10;43)	2 (0.4)	2 (0.3)	120 (46;194)
Occupational category						
Non-manual skilled	160 (18.2)	189 (17.8)	23 (10; 66.5)	50 (10)	61 (9.7)	23 (11;67)
Non-manual non-skilled	503 (57.2)	616 (57.9)	24 (9; 67)	150 (30)	178 (28.3)	16 (6;50)
Manual skilled	137 (15.6)	161 (15.1)	22 (7; 58)	217 (43.4)	277 (44.1)	21 (9;61)
Manual non-skilled	79 (9.0)	98 (9.2)	24 (8; 56)	83 (16.6)	112 (17.8)	28 (7;61)
Income in tertiles						
High	268 (30.5)	327 (30.7)	23 (8; 63)	191 (38.2)	244 (38.9)	19 (8;60)
Medium	282 (32.1)	328 (30.8)	27 (10; 78)	177 (35.4)	215 (34.2)	15 (6;46)
Low	328 (37.4)	407 (38.3)	21.5 (8;59)	132 (26.4)	169 (26.9)	37 (13.5;82)
Type of contract						
Permanent contract	701 (79.8)	837 (78.7)	23 (9; 67)	418 (83.6)	523 (83.3)	21 (8;58)
Temporary contract	178 (20.3)	227 (21.3)	26 (8.5; 61)	82 (16.4)	105 (16.7)	28 (7;55)
Total	879	1.064		500	628	

* Sickness absence closed episodes due to mental disorders regardless of its duration between 2012-2014; SD, standard deviation; MD, median duration; P25, percentile 25; P75, percentile 75

Figure 1 Sickness absence trajectories in salaried women living in Catalonia (2012-2014).

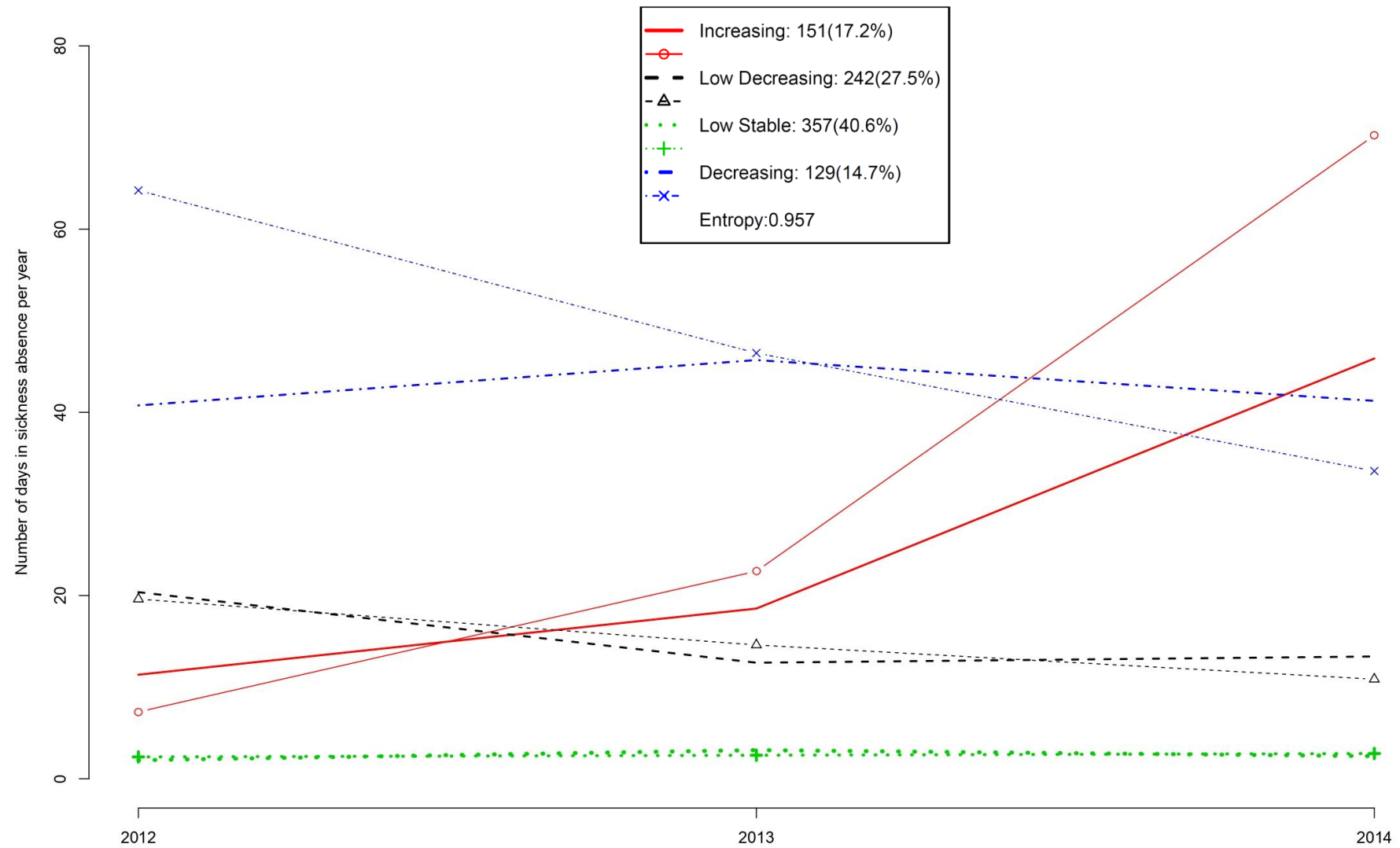


Figure 2 Sickness absence trajectories in salaried men living in Catalonia (2012-2014).

