

Supplementary Material

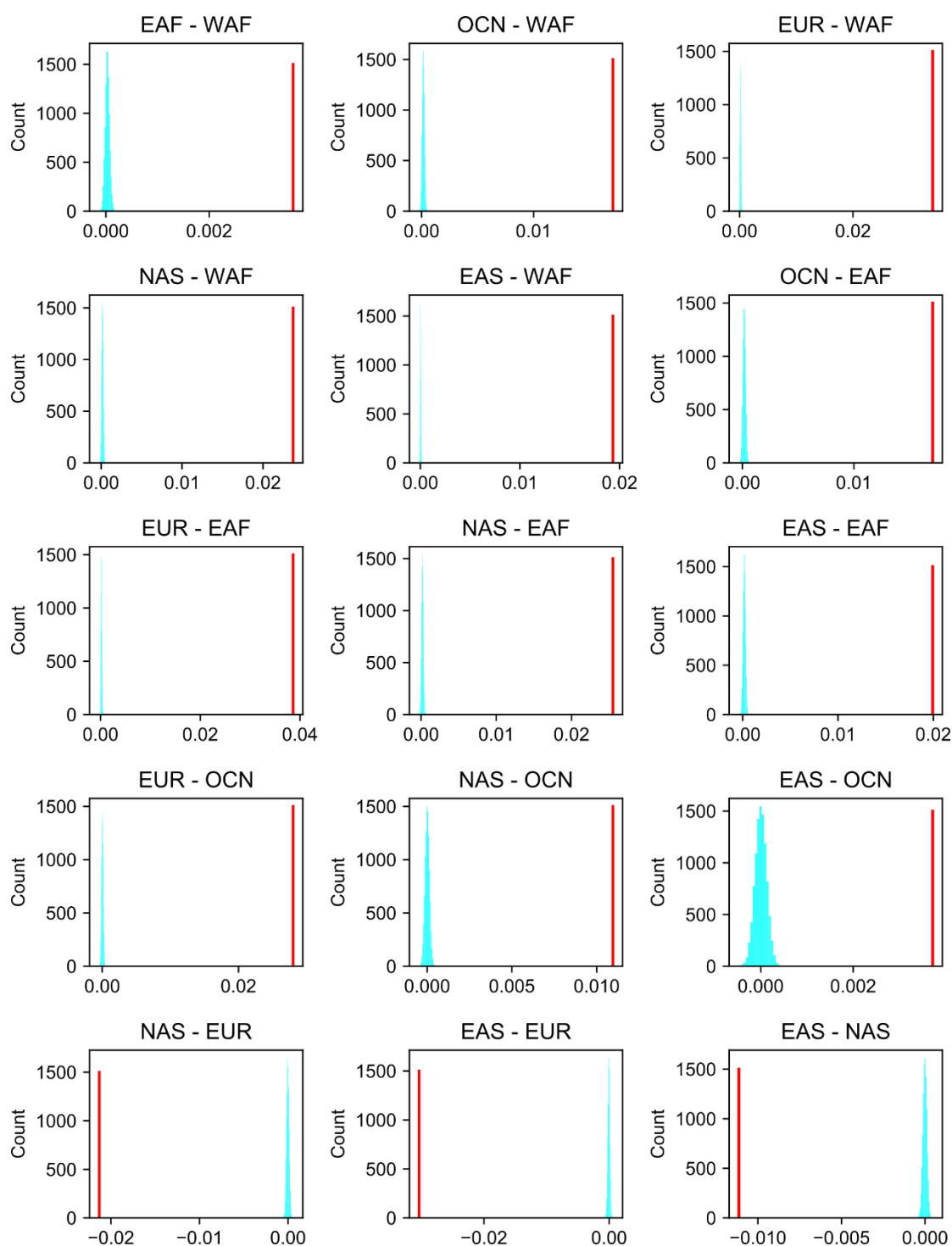


Fig. S1. Significance levels of the selection differences associated with human pigmentation between populations. The blue bars are the empirical distributions of population differences using 10,000 random sets of 30 SNPs in the genomes. The red lines are the selection differences between populations using 30 SNPs associated human pigmentation (Materials and Methods). Population abbreviations: WAF, West Africans; EAF, East Africans; OCN, Oceanians; EUR, Europeans; NAS, North Asians; EAS, East Asians.

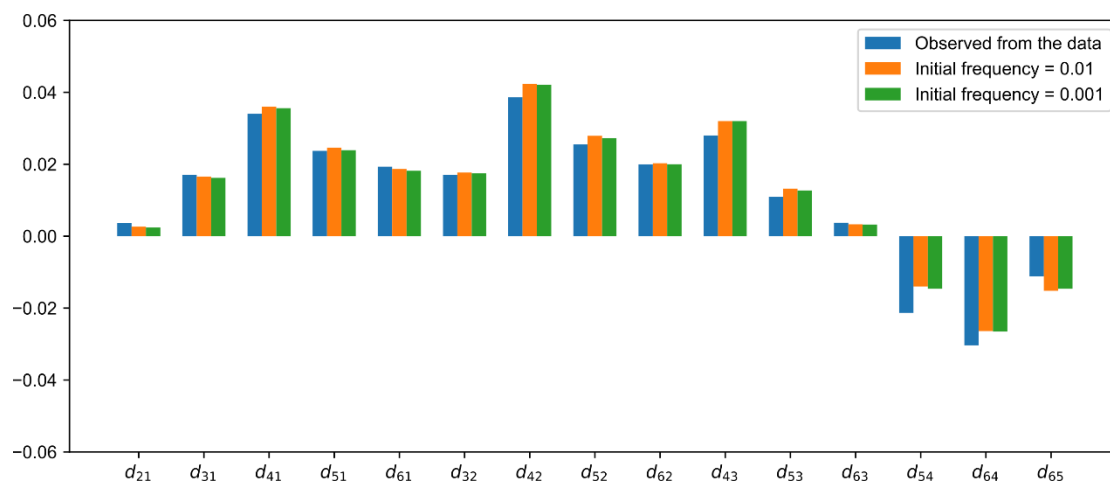


Fig. S2. Comparisons between selection differences from simulation and the data. The selection differences are: d_{21} , differences between East Africans and West Africans; d_{31} , differences between Oceanians and West Africans; d_{41} , differences between Europeans and West Africans; d_{51} , differences between North Asians and West Africans; d_{61} , differences between East Asians and West Africans; d_{32} , differences between Oceanians and East Africans; d_{42} , differences between Europeans and East Africans; d_{52} , differences between North Asians and East Africans; d_{62} , differences between East Asians and East Africans; d_{43} , differences between Europeans and Oceanians; d_{53} , differences between North Asians and Oceanians; d_{63} , differences between East Asians and Oceanians; d_{54} , differences between North Asians and Europeans; d_{64} , differences between East Asians and Europeans; d_{65} , differences between East Asians and North Asians.

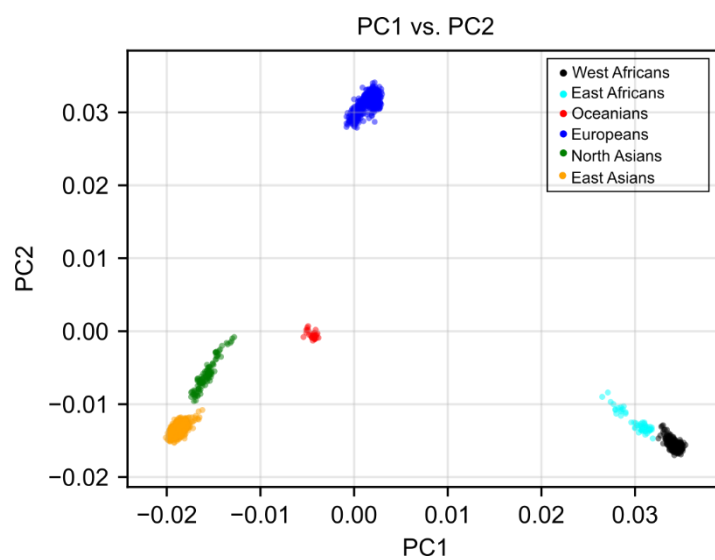


Fig. S3. PCA plot of 2346 samples.



Fig. S4. Derived allele frequencies of candidate SNPs from imputation and the 1000 Genomes project. Population abbreviations: WAF, West Africans; EAF, East Africans; OCN, Oceanians; EUR, Europeans; NAS, North Asians; EAS, East Asians.

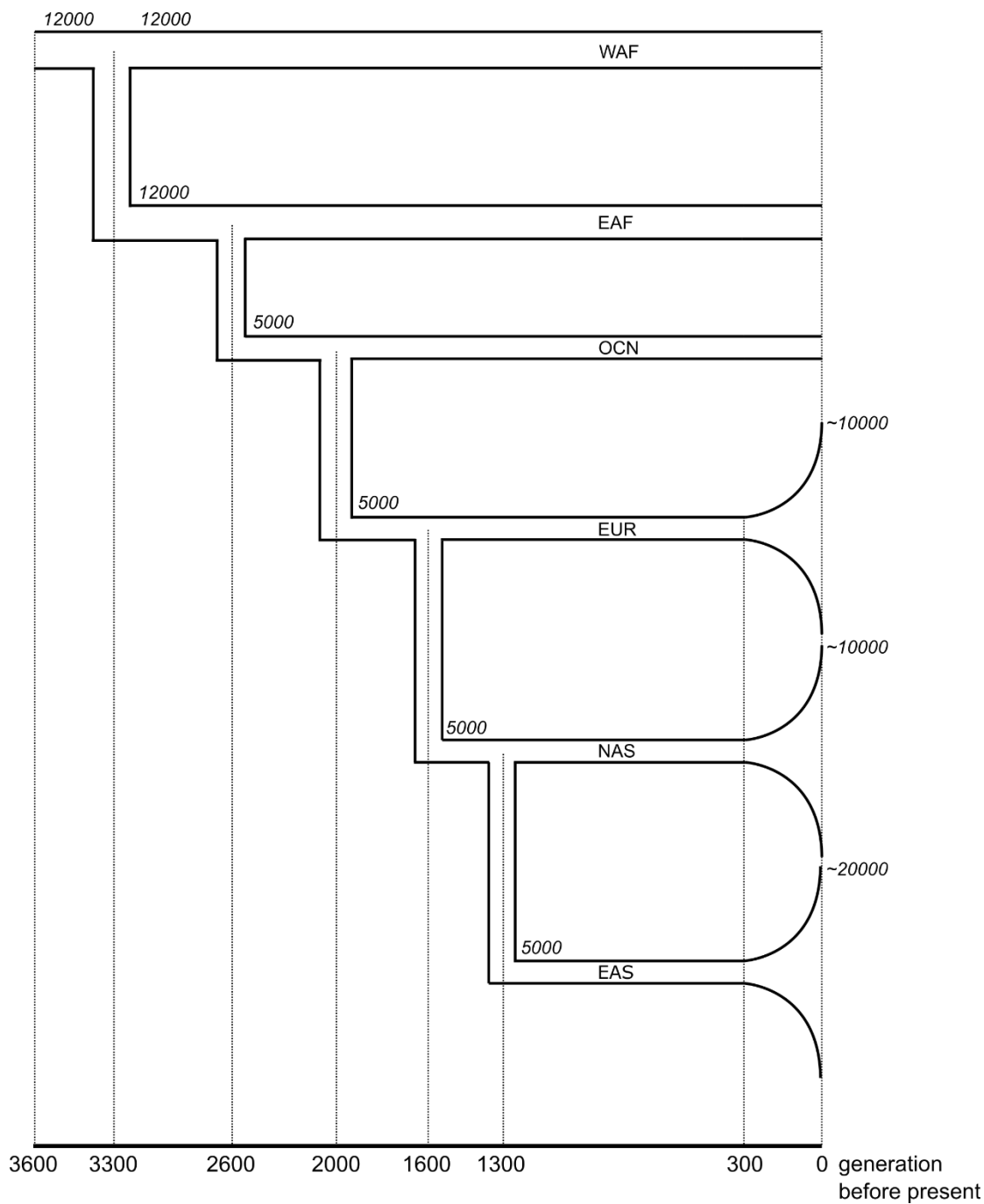


Fig. S5. The demography model for simulation. The italic numbers indicate population sizes at different time periods. Population abbreviations: WAF, West Africans; EAF, East Africans; OCN, Oceanians; EUR, Europeans; NAS, North Asians; EAS, East Asians.

Table S1 Data resources

Dataset	Sample size	Resource	Reference
1KG	2504	http://www.1000genomes.org/	The 1000 Genomes Project Consortium, 2010
HapMap3	1397	http://www.sanger.ac.uk/resources/downloads/human/hapmap3.html	The International HapMap 3 Consortium, 2010
Jew	466	http://evolbio.ut.ee/jew/	Behar, et al., 2010
Afghan	24	http://evolbio.ut.ee/afghan/	Cristofaro, et al., 2013
Sakha	40	http://evolbio.ut.ee/sakha/	Fedorova, et al., 2013
Balkan	70	http://evolbio.ut.ee/balkan/	Kovacevic, et al., 2014
HGDP	1043	ftp://ftp.cephb.fr/hgdp_supp1/	Li, et al., 2008
India	142	http://evolbio.ut.ee/india/	Metspalu, et al., 2011
Ethiopian	235	http://mega.bioanth.cam.ac.uk/data/Ethiopia	Pagani, et al., 2012
Malta	85	http://evolbio.ut.ee/malta/	Raghavan, et al., 2014
Saqqaq	197	http://evolbio.ut.ee/saqqaq/	Rasmussen, et al., 2010
SGVP	268	http://phg.nus.edu.sg/StatGen/public_html/SGVP/download.html	Teo, et al., 2009
NorthernEurasian	369	Request from the authors	Xing, et al., 2013
Caucasus	204	http://evolbio.ut.ee/caucasus/	Yunusbayev, et al., 2012
Turkic	322	http://evolbio.ut.ee/turkic/	Yunusbayev, et al., 2015
Andamanese	10	https://www.ebi.ac.uk/ena/data/view/PRJEB11455	Modal, et al., 2016
EGDP	483	http://evolbio.ut.ee/CGgenomes.html	Pagani, et al., 2016

Table S2 Population information

Data resource	Population group	Population abbreviation	Sample size
Ethiopian	East Africans	ANU	21
Ethiopian	East Africans	GUM	15
Ethiopian	East Africans	SUD	23
1KG	East Asians	CHN	208
1KG	East Asians	DAI	93
1KG	East Asians	JAP	104
1KG	East Asians	KHV	96
EGDP	East Asians	BUM	1
EGDP	East Asians	DSN	8
EGDP	East Asians	IGO	8
EGDP	East Asians	LBO	4
EGDP	East Asians	LUZ	2
EGDP	East Asians	MUR	8
EGDP	East Asians	VIZ	2
EGDP	East Asians	VTN	10
HapMap3	East Asians	CHN	152
HapMap3	East Asians	JAP	16
HGDP	East Asians	CHN	44
HGDP	East Asians	DAI	10
HGDP	East Asians	JAP	28
HGDP	East Asians	LAH	8
HGDP	East Asians	MIA	10
HGDP	East Asians	NAX	9
HGDP	East Asians	SHE	10
HGDP	East Asians	TUJ	10
HGDP	East Asians	YIZ	10
SGVP	East Asians	CHN	96
1KG	Europeans	CEU	99
1KG	Europeans	FIN	99
1KG	Europeans	GBR	91
Jew	Europeans	BEL	9
Jew	Europeans	HNG	20
Jew	Europeans	LIT	10
Jew	Europeans	RMN	14
Jew	Europeans	RUS	2
EGDP	Europeans	ALB	3
EGDP	Europeans	BEL	4
EGDP	Europeans	COS	4
EGDP	Europeans	CRO	4
EGDP	Europeans	EST	6
EGDP	Europeans	FIN	3
EGDP	Europeans	GER	3
EGDP	Europeans	HNG	2
EGDP	Europeans	ING	3
EGDP	Europeans	KAR	3

EGDP	Europeans	KOM	2
EGDP	Europeans	LAT	3
EGDP	Europeans	LIT	3
EGDP	Europeans	MOL	2
EGDP	Europeans	MRD	3
EGDP	Europeans	POL	4
EGDP	Europeans	RUS	7
EGDP	Europeans	SWE	2
EGDP	Europeans	UKR	7
EGDP	Europeans	VEP	4
HapMap3	Europeans	CEU	24
Balkan	Europeans	BOS	14
Balkan	Europeans	KSV	9
Balkan	Europeans	MAC	14
Balkan	Europeans	MNT	14
Balkan	Europeans	SER	18
HGDP	Europeans	FRE	28
HGDP	Europeans	ORC	15
HGDP	Europeans	RUS	25
Malta	Europeans	EST	14
Malta	Europeans	RUS	1
NorthernEurasian	Europeans	SLV	25
Turkic	Europeans	GAG	12
Turkic	Europeans	GER	13
Turkic	Europeans	KAR	15
Turkic	Europeans	RUS	33
Turkic	Europeans	VEP	11
EGDP	North Asians	EVK	13
EGDP	North Asians	EVN	8
EGDP	North Asians	NGA	2
EGDP	North Asians	SAK	7
EGDP	North Asians	YAK	1
Sakha	North Asians	DOL	3
Sakha	North Asians	EVN	8
Sakha	North Asians	YAK	1
HGDP	North Asians	YAK	22
Malta	North Asians	DOL	1
Malta	North Asians	EVE	2
Saqqaq	North Asians	DOL	4
Saqqaq	North Asians	EVE	15
Saqqaq	North Asians	NGA	13
Saqqaq	North Asians	YUK	3
Turkic	North Asians	EVE	3
Turkic	North Asians	EVN	3
Turkic	North Asians	NGA	2
Turkic	North Asians	YAK	3
EGDP	Oceanians	KOI	3

EGDP	Oceanians	KOS	3
HGDP	Oceanians	PAP	16
Andamanese	Oceanians	AND	10
1KG	West Africans	ESN	99
1KG	West Africans	GWD	112
1KG	West Africans	MSL	85
1KG	West Africans	YOR	108
HapMap3	West Africans	YOR	46
HGDP	West Africans	MND	22
HGDP	West Africans	YOR	21

Table S3 Candidate SNP information

Gene	Chromosome	Position (Hg19)	SNP	Ancestral allele	Derived allele	Pigmentation associated with the derived allele	Reference
<i>SLC45A2</i>	5	33951693	rs16891982	C	G	light	Graf, et al., 2005; Walsh, et al., 2013
<i>SLC45A2</i>	5	33958959	rs28777	C	A	light	Walsh, et al., 2013
<i>SLC45A2</i>	5	33963870	rs26722	C	T	dark	Graf, et al., 2005
<i>IRF4</i>	6	396321	rs12203592	C	T	light	Han, et al., 2008; Praetorius, et al., 2013
<i>EXOC2</i>	6	457748	rs4959270	C	A	light	Walsh, et al., 2013
<i>TYRP1</i>	9	12672097	rs1408799	T	C	light	Sulem, et al., 2008
<i>TYRP1</i>	9	12709305	rs683	A	C	dark	Walsh, et al., 2013
<i>BNC2</i>	9	16858084	rs10756819	G	A	light	Guenther, et al., 2014; Jacobs, et al., 2013
<i>BNC2</i>	9	16885017	rs12350739	G	A	light	Visser, et al., 2012
<i>DDB1</i>	11	61076372	rs11230664	C	T	light	Crawford, et al., 2017
<i>DDB1</i>	11	61080557	rs7120594	T	C	light	Crawford, et al., 2017
<i>DDB1</i>	11	61137147	rs7948623	A	T	dark	Crawford, et al., 2017
<i>DDB1</i>	11	61144652	rs1377457	C	A	light	Crawford, et al., 2017
<i>TPCN2</i>	11	68846399	rs35264875	A	T	light	Sulem, et al., 2008
<i>TPCN2</i>	11	68855363	rs3829241	G	A	light	Sulem, et al., 2008
<i>TYR</i>	11	88911696	rs1042602	C	A	light	Stokowki, et al., 2007
<i>TYR</i>	11	89011046	rs1393350	G	A	light	Sulem, et al., 2008
<i>TYR</i>	11	89017961	rs1126809	G	A	light	Graf, et al., 2005
<i>KITLG</i>	12	89299746	rs642742	A	G	light	Miller, et al., 2007
<i>KITLG</i>	12	89328335	rs12821256	T	C	light	Sulem, et al., 2004

<i>DCT</i>	13	95096013	rs1407995	T	C	Unknown	Edwards, et al., 2010; Ainger, et al., 2017
<i>DCT</i>	13	95100841	rs2031526	G	A	Unknown	Edwards, et al., 2010; Ainger, et al., 2017
<i>SLC24A4</i>	14	92773663	rs12896399	G	T	light	Sulem, et al., 2007
<i>SLC24A4</i>	14	92801203	rs2402130	G	A	light	Walsh, et al., 2013
<i>OCA2</i>	15	28183354	rs2311843	C	T	Unknown	Anno, et al., 2008
<i>OCA2</i>	15	28197037	rs1800414	A	G	light	Edwards, et al., 2010; Yang, et al., 2016; Murray, et al. 2015
<i>OCA2</i>	15	28228553	rs74653330	G	A	light	Murray, et al., 2015
<i>OCA2</i>	15	28230318	rs1800407	G	A	light	Branicki, et al., 2009; Branicki, et al., 2011
<i>OCA2</i>	15	28235773	rs1800404	G	A	light	Crawford, et al., 2017
<i>OCA2</i>	15	28260053	rs1800401	C	T	dark	Rebbeck, et al., 2002
<i>HERC2</i>	15	28356859	rs1129038	G	A	light	Donnelly, et al., 2012; Eiberg, et al., 2008
<i>HERC2</i>	15	28365618	rs12913832	A	G	light	Sulem, et al., 2008; Sturm, et al., 2008
<i>HERC2</i>	15	28513364	rs916977	A	G	light	Kayser, et al., 2008; Donnelly, et al., 2012
<i>HERC2</i>	15	28530182	rs1667394	G	A	light	Sulem, et al., 2007; Donnelly, et al., 2012
<i>SLC24A5</i>	15	48426484	rs1426654	G	A	light	Lamason, et al., 2005
<i>MYO5A</i>	15	52816195	rs4776053	C	T	Unknown	Anno, et al., 2008
<i>MC1R</i>	16	89985844	rs1805005	G	T	light	Walsh, et al., 2013
<i>MC1R</i>	16	89985918	rs1805006	C	A	light	Walsh, et al., 2013
<i>MC1R</i>	16	89985940	rs2228479	G	A	light	Walsh, et al., 2013
<i>MC1R</i>	16	89986091	rs11547464	G	A	light	Walsh, et al., 2013
<i>MC1R</i>	16	89986117	rs1805007	C	T	light	Walsh, et al., 2013
<i>MC1R</i>	16	89986130	rs1110400	T	C	light	Walsh, et al., 2013
<i>MC1R</i>	16	89986144	rs1805008	C	T	light	Walsh, et al., 2013
<i>MC1R</i>	16	89986154	rs885479	G	A	light	Walsh, et al., 2013
<i>MC1R</i>	16	89986546	rs1805009	G	C	light	Walsh, et al., 2013

<i>MFSD12</i>	19	3544892	rs56203814	C	T	dark	Crawfold, et al., 2017
<i>MFSD12</i>	19	3545022	rs10424065	C	T	dark	Crawfold, et al., 2017
<i>MFSD12</i>	19	3565253	rs6510760	G	A	dark	Crawfold, et al., 2017
<i>MFSD12</i>	19	3565599	rs112332856	T	C	dark	Crawfold, et al., 2017
<i>ASIP</i>	20	32785212	rs6119471	G	C	light	Hart, et al., 2013
<i>ASIP</i>	20	32856998	rs6058017	G	A	light	Bonilla, et al., 2005
<i>PIGU</i>	20	33218090	rs2378249	A	G	light	Branicki, et al., 2011

Table S4 Selection differences on the 42 selected SNPs

Gene	SNP ID	Ancestral allele	Derived allele	Population1	Population2	Selection difference (Population1 - Population2)	Std	p-value
<i>SLC45A2</i>	rs16891982	C	G	Europeans	NorthAsians	0.003181	7.47E-04	2.10E-05
<i>SLC45A2</i>	rs28777	C	A	Europeans	NorthAsians	0.003107	7.46E-04	3.10E-05
<i>SLC45A2</i>	rs26722	C	T	Europeans	NorthAsians	-0.001767	7.47E-04	0.017939
<i>EXOC2</i>	rs4959270	C	A	Europeans	NorthAsians	4.12E-04	7.38E-04	0.576675
<i>TYRP1</i>	rs1408799	T	C	Europeans	NorthAsians	0.00287	7.90E-04	2.82E-04
<i>TYRP1</i>	rs683	A	C	Europeans	NorthAsians	-0.002354	7.60E-04	0.001943
<i>BNC2</i>	rs10756819	G	A	Europeans	NorthAsians	2.33E-04	7.37E-04	0.752243
<i>BNC2</i>	rs12350739	G	A	Europeans	NorthAsians	0.002475	7.85E-04	0.00161
<i>DDB1</i>	rs11230664	C	T	Europeans	NorthAsians	-8.56E-04	0.001162	0.461178
<i>DDB1</i>	rs7120594	T	C	Europeans	NorthAsians	-5.17E-04	0.001172	0.658962
<i>DDB1</i>	rs7948623	A	T	Europeans	NorthAsians	4.21E-04	0.001176	0.720668
<i>DDB1</i>	rs1377457	C	A	Europeans	NorthAsians	-7.42E-04	0.001165	0.524412
<i>TPCN2</i>	rs35264875	A	T	Europeans	NorthAsians	0.00152	7.85E-04	0.052919
<i>TPCN2</i>	rs3829241	G	A	Europeans	NorthAsians	1.79E-04	7.38E-04	0.808351
<i>TYR</i>	rs1042602	C	A	Europeans	NorthAsians	0.002002	7.90E-04	0.011305
<i>TYR</i>	rs1393350	G	A	Europeans	NorthAsians	0.0023	8.94E-04	0.010076
<i>TYR</i>	rs1126809	G	A	Europeans	NorthAsians	0.002329	8.94E-04	0.009156
<i>KITLG</i>	rs642742	A	G	Europeans	NorthAsians	-1.94E-04	7.43E-04	0.794378
<i>KITLG</i>	rs12821256	T	C	Europeans	NorthAsians	0.002653	0.001149	0.020951
<i>DCT</i>	rs1407995	T	C	Europeans	NorthAsians	0.001528	7.38E-04	0.038476
<i>DCT</i>	rs2031526	G	A	Europeans	NorthAsians	-0.001525	7.38E-04	0.038867
<i>SLC24A4</i>	rs12896399	G	T	Europeans	NorthAsians	3.51E-04	7.38E-04	0.634377
<i>SLC24A4</i>	rs2402130	G	A	Europeans	NorthAsians	-2.25E-04	7.43E-04	0.761965
<i>OCA2</i>	rs2311843	C	T	Europeans	NorthAsians	-0.001944	7.40E-04	0.008596
<i>OCA2</i>	rs1800414	A	G	Europeans	NorthAsians	-0.002739	9.05E-04	0.002475
<i>OCA2</i>	rs1800404	C	T	Europeans	NorthAsians	-2.52E-04	7.43E-04	0.73489

<i>OCA2</i>	rs1800401	C	A	Europeans	NorthAsians	2.58E-04	7.81E-04	0.741106
<i>HERC2</i>	rs1129038	G	A	Europeans	NorthAsians	0.003579	8.33E-04	1.80E-05
<i>HERC2</i>	rs12913832	A	G	Europeans	NorthAsians	0.003566	8.33E-04	1.90E-05
<i>HERC2</i>	rs916977	A	G	Europeans	NorthAsians	0.001695	7.39E-04	0.02177
<i>HERC2</i>	rs1667394	G	A	Europeans	NorthAsians	0.001684	7.39E-04	0.022651
<i>SLC24A5</i>	rs1426654	G	A	Europeans	NorthAsians	0.004135	7.65E-04	0
<i>MYO5A</i>	rs4776053	C	T	Europeans	NorthAsians	-7.63E-04	7.38E-04	0.301197
<i>MC1R</i>	rs2228479	G	A	Europeans	NorthAsians	-9.75E-04	7.40E-04	0.187511
<i>MC1R</i>	rs885479	G	A	Europeans	NorthAsians	-0.001829	7.39E-04	0.013324
<i>MFS12</i>	rs56203814	C	T	Europeans	NorthAsians	2.40E-04	0.001185	0.839641
<i>MFS12</i>	rs10424065	C	T	Europeans	NorthAsians	2.40E-04	0.001185	0.839641
<i>MFS12</i>	rs6510760	G	A	Europeans	NorthAsians	1.39E-04	7.58E-04	0.85424
<i>MFS12</i>	rs112332856	T	C	Europeans	NorthAsians	9.48E-04	8.98E-04	0.291189
<i>ASIP</i>	rs6119471	G	C	Europeans	NorthAsians	0.001135	0.001449	0.433361
<i>ASIP</i>	rs6058017	G	A	Europeans	NorthAsians	-0.001192	7.91E-04	0.132079
<i>PIGU</i>	rs2378249	A	G	Europeans	NorthAsians	-5.74E-04	7.39E-04	0.437671
<i>SLC45A2</i>	rs16891982	C	G	Europeans	Oceanians	0.002754	6.98E-04	8.00E-05
<i>SLC45A2</i>	rs28777	C	A	Europeans	Oceanians	0.001774	6.71E-04	0.008209
<i>SLC45A2</i>	rs26722	C	T	Europeans	Oceanians	-0.001337	6.78E-04	0.048735
<i>EXOC2</i>	rs4959270	C	A	Europeans	Oceanians	-0.001082	6.83E-04	0.113007
<i>TYRP1</i>	rs1408799	T	C	Europeans	Oceanians	0.002211	7.75E-04	0.00434
<i>TYRP1</i>	rs683	A	C	Europeans	Oceanians	-0.002211	7.75E-04	0.00434
<i>BNC2</i>	rs10756819	G	A	Europeans	Oceanians	3.18E-04	6.68E-04	0.633414
<i>BNC2</i>	rs12350739	G	A	Europeans	Oceanians	0.002508	9.67E-04	0.009475
<i>DDB1</i>	rs11230664	C	T	Europeans	Oceanians	0.002313	6.83E-04	7.03E-04
<i>DDB1</i>	rs7120594	T	C	Europeans	Oceanians	0.002585	6.94E-04	1.94E-04
<i>DDB1</i>	rs7948623	A	T	Europeans	Oceanians	-0.002567	6.98E-04	2.36E-04
<i>DDB1</i>	rs1377457	C	A	Europeans	Oceanians	0.002405	6.86E-04	4.53E-04
<i>TPCN2</i>	rs35264875	A	T	Europeans	Oceanians	-5.25E-04	6.68E-04	0.431752

<i>TPCN2</i>	rs3829241	G	A	Europeans	Oceanians	0.001206	7.11E-04	0.090003
<i>TYR</i>	rs1042602	C	A	Europeans	Oceanians	0.002074	9.67E-04	0.031884
<i>TYR</i>	rs1393350	G	A	Europeans	Oceanians	0.001756	9.67E-04	0.069267
<i>TYR</i>	rs1126809	G	A	Europeans	Oceanians	0.00178	9.67E-04	0.065616
<i>KITLG</i>	rs642742	A	G	Europeans	Oceanians	1.05E-04	6.74E-04	0.876062
<i>KITLG</i>	rs12821256	T	C	Europeans	Oceanians	0.001487	9.67E-04	0.124028
<i>DCT</i>	rs1407995	T	C	Europeans	Oceanians	6.48E-04	6.68E-04	0.332199
<i>DCT</i>	rs2031526	G	A	Europeans	Oceanians	-6.46E-04	6.68E-04	0.334037
<i>SLC24A4</i>	rs12896399	G	T	Europeans	Oceanians	-2.53E-04	6.68E-04	0.704428
<i>SLC24A4</i>	rs2402130	G	A	Europeans	Oceanians	-9.90E-05	6.78E-04	0.884527
<i>OCA2</i>	rs2311843	C	T	Europeans	Oceanians	-0.001052	6.68E-04	0.115666
<i>OCA2</i>	rs1800414	A	G	Europeans	Oceanians	-0.002783	7.87E-04	4.05E-04
<i>OCA2</i>	rs1800404	C	T	Europeans	Oceanians	0.001137	6.70E-04	0.08982
<i>OCA2</i>	rs1800401	C	T	Europeans	Oceanians	8.27E-04	9.69E-04	0.393278
<i>HERC2</i>	rs1129038	G	A	Europeans	Oceanians	0.003037	9.67E-04	0.001678
<i>HERC2</i>	rs12913832	A	G	Europeans	Oceanians	0.003027	9.67E-04	0.001739
<i>HERC2</i>	rs916977	A	G	Europeans	Oceanians	9.80E-04	6.68E-04	0.142565
<i>HERC2</i>	rs1667394	G	A	Europeans	Oceanians	9.71E-04	6.68E-04	0.14624
<i>SLC24A5</i>	rs1426654	G	A	Europeans	Oceanians	0.004289	7.89E-04	0
<i>MYO5A</i>	rs4776053	C	T	Europeans	Oceanians	9.60E-04	7.76E-04	0.215663
<i>MC1R</i>	rs2228479	G	A	Europeans	Oceanians	-1.59E-04	6.87E-04	0.816976
<i>MC1R</i>	rs885479	G	A	Europeans	Oceanians	4.12E-04	7.32E-04	0.57365
<i>MFS12</i>	rs56203814	C	T	Europeans	Oceanians	-4.43E-04	9.95E-04	0.655763
<i>MFS12</i>	rs10424065	C	T	Europeans	Oceanians	-4.43E-04	9.95E-04	0.655763
<i>MFS12</i>	rs6510760	G	A	Europeans	Oceanians	-0.001365	6.69E-04	0.041418
<i>MFS12</i>	rs112332856	T	C	Europeans	Oceanians	-0.001282	6.75E-04	0.057377
<i>ASIP</i>	rs6119471	G	C	Europeans	Oceanians	0.001543	0.001197	0.197389
<i>ASIP</i>	rs6058017	G	A	Europeans	Oceanians	1.57E-04	6.79E-04	0.816854
<i>PIGU</i>	rs2378249	A	G	Europeans	Oceanians	-6.90E-05	6.81E-04	0.9196

<i>SLC45A2</i>	rs16891982	C	G	Europeans	EastAsians	0.004804	7.53E-04	0
<i>SLC45A2</i>	rs28777	C	A	Europeans	EastAsians	0.003301	7.40E-04	8.00E-06
<i>SLC45A2</i>	rs26722	C	T	Europeans	EastAsians	-0.002147	7.43E-04	0.00388
<i>EXOC2</i>	rs4959270	C	A	Europeans	EastAsians	2.80E-04	7.35E-04	0.70332
<i>TYRP1</i>	rs1408799	T	C	Europeans	EastAsians	0.002875	7.42E-04	1.06E-04
<i>TYRP1</i>	rs683	A	C	Europeans	EastAsians	-0.003298	7.48E-04	1.10E-05
<i>BNC2</i>	rs10756819	G	A	Europeans	EastAsians	2.60E-04	7.35E-04	0.723261
<i>BNC2</i>	rs12350739	G	A	Europeans	EastAsians	0.003316	7.58E-04	1.20E-05
<i>DDB1</i>	rs11230664	C	T	Europeans	EastAsians	8.84E-04	7.60E-04	0.244405
<i>DDB1</i>	rs7120594	T	C	Europeans	EastAsians	0.001224	7.75E-04	0.114356
<i>DDB1</i>	rs7948623	A	T	Europeans	EastAsians	5.27E-04	8.46E-04	0.533572
<i>DDB1</i>	rs1377457	C	A	Europeans	EastAsians	-2.40E-05	7.80E-04	0.97525
<i>TPCN2</i>	rs35264875	A	T	Europeans	EastAsians	0.002125	7.51E-04	0.004686
<i>TPCN2</i>	rs3829241	G	A	Europeans	EastAsians	5.75E-04	7.35E-04	0.43454
<i>TYR</i>	rs1042602	C	A	Europeans	EastAsians	0.003703	8.34E-04	9.00E-06
<i>TYR</i>	rs1393350	G	A	Europeans	EastAsians	0.003095	8.07E-04	1.26E-04
<i>TYR</i>	rs1126809	G	A	Europeans	EastAsians	0.003655	8.95E-04	4.40E-05
<i>KITLG</i>	rs642742	A	G	Europeans	EastAsians	1.58E-04	7.36E-04	0.829732
<i>KITLG</i>	rs12821256	T	C	Europeans	EastAsians	0.003289	8.95E-04	2.38E-04
<i>DCT</i>	rs1407995	T	C	Europeans	EastAsians	0.001625	7.36E-04	0.027173
<i>DCT</i>	rs2031526	G	A	Europeans	EastAsians	-0.001627	7.36E-04	0.026976
<i>SLC24A4</i>	rs12896399	G	T	Europeans	EastAsians	3.12E-04	7.35E-04	0.67082
<i>SLC24A4</i>	rs2402130	G	A	Europeans	EastAsians	-7.69E-04	7.37E-04	0.296629
<i>OCA2</i>	rs2311843	C	T	Europeans	EastAsians	-0.00198	7.36E-04	0.007154
<i>OCA2</i>	rs1800414	A	G	Europeans	EastAsians	-0.004515	8.94E-04	0
<i>OCA2</i>	rs1800404	C	T	Europeans	EastAsians	0.001211	7.35E-04	0.099601
<i>OCA2</i>	rs1800401	C	T	Europeans	EastAsians	0.001064	7.57E-04	0.160263
<i>HERC2</i>	rs1129038	G	A	Europeans	EastAsians	0.004539	7.92E-04	0
<i>HERC2</i>	rs12913832	A	G	Europeans	EastAsians	0.004684	8.07E-04	0

<i>HERC2</i>	rs916977	A	G	Europeans	EastAsians	0.001788	7.36E-04	0.015136
<i>HERC2</i>	rs1667394	G	A	Europeans	EastAsians	0.001778	7.36E-04	0.015681
<i>SLC24A5</i>	rs1426654	G	A	Europeans	EastAsians	0.005774	7.69E-04	0
<i>MYO5A</i>	rs4776053	C	T	Europeans	EastAsians	-1.45E-04	7.36E-04	0.844254
<i>MC1R</i>	rs2228479	G	A	Europeans	EastAsians	-9.51E-04	7.37E-04	0.196783
<i>MC1R</i>	rs885479	G	A	Europeans	EastAsians	-0.001785	7.37E-04	0.015392
<i>MFS12</i>	rs56203814	C	T	Europeans	EastAsians	0.001563	0.001186	0.18755
<i>MFS12</i>	rs10424065	C	T	Europeans	EastAsians	8.76E-04	9.41E-04	0.351953
<i>MFS12</i>	rs6510760	G	A	Europeans	EastAsians	1.37E-04	7.40E-04	0.85293
<i>MFS12</i>	rs112332856	T	C	Europeans	EastAsians	0.001151	7.69E-04	0.134437
<i>ASIP</i>	rs6119471	G	C	Europeans	EastAsians	-1.88E-04	0.00145	0.896809
<i>ASIP</i>	rs6058017	G	A	Europeans	EastAsians	4.96E-04	7.36E-04	0.500451
<i>PIGU</i>	rs2378249	A	G	Europeans	EastAsians	-2.14E-04	7.36E-04	0.770841
<i>SLC45A2</i>	rs16891982	C	G	Europeans	EastAfricans	0.002845	6.31E-04	6.00E-06
<i>SLC45A2</i>	rs28777	C	A	Europeans	EastAfricans	0.001699	5.53E-04	0.002098
<i>SLC45A2</i>	rs26722	C	T	Europeans	EastAfricans	-4.21E-04	5.68E-04	0.459218
<i>EXOC2</i>	rs4959270	C	A	Europeans	EastAfricans	9.79E-04	5.64E-04	0.08264
<i>TYRP1</i>	rs1408799	T	C	Europeans	EastAfricans	7.12E-04	5.50E-04	0.195475
<i>TYRP1</i>	rs683	A	C	Europeans	EastAfricans	-8.09E-04	5.51E-04	0.142307
<i>BNC2</i>	rs10756819	G	A	Europeans	EastAfricans	0.001721	5.97E-04	0.003941
<i>BNC2</i>	rs12350739	G	A	Europeans	EastAfricans	0.002164	7.70E-04	0.004947
<i>DDB1</i>	rs11230664	C	T	Europeans	EastAfricans	0.002891	5.75E-04	0
<i>DDB1</i>	rs7120594	T	C	Europeans	EastAfricans	0.002582	5.70E-04	6.00E-06
<i>DDB1</i>	rs7948623	A	T	Europeans	EastAfricans	-0.002338	5.71E-04	4.20E-05
<i>DDB1</i>	rs1377457	C	A	Europeans	EastAfricans	0.003024	5.80E-04	0
<i>TPCN2</i>	rs35264875	A	T	Europeans	EastAfricans	8.60E-05	5.52E-04	0.876402
<i>TPCN2</i>	rs3829241	G	A	Europeans	EastAfricans	0.001304	5.97E-04	0.028911
<i>TYR</i>	rs1042602	C	A	Europeans	EastAfricans	0.001831	7.70E-04	0.017436
<i>TYR</i>	rs1393350	G	A	Europeans	EastAfricans	0.001586	7.70E-04	0.039444

<i>TYR</i>	rs1126809	G	A	Europeans	EastAfricans	0.001604	7.70E-04	0.037246
<i>KITLG</i>	rs642742	A	G	Europeans	EastAfricans	0.001378	5.55E-04	0.013057
<i>KITLG</i>	rs12821256	T	C	Europeans	EastAfricans	2.86E-04	5.62E-04	0.611079
<i>DCT</i>	rs1407995	T	C	Europeans	EastAfricans	-4.00E-05	5.53E-04	0.942694
<i>DCT</i>	rs2031526	G	A	Europeans	EastAfricans	6.06E-04	5.72E-04	0.289335
<i>SLC24A4</i>	rs12896399	G	T	Europeans	EastAfricans	9.89E-04	5.64E-04	0.079557
<i>SLC24A4</i>	rs2402130	G	A	Europeans	EastAfricans	5.86E-04	5.49E-04	0.285706
<i>OCA2</i>	rs2311843	C	T	Europeans	EastAfricans	9.39E-04	6.29E-04	0.135776
<i>OCA2</i>	rs1800414	A	G	Europeans	EastAfricans	-5.29E-04	8.31E-04	0.524534
<i>OCA2</i>	rs1800404	C	T	Europeans	EastAfricans	0.001814	5.75E-04	0.001596
<i>OCA2</i>	rs1800401	C	T	Europeans	EastAfricans	1.30E-05	5.77E-04	0.982
<i>HERC2</i>	rs1129038	G	A	Europeans	EastAfricans	0.002572	7.70E-04	8.41E-04
<i>HERC2</i>	rs12913832	A	G	Europeans	EastAfricans	0.002564	7.70E-04	8.72E-04
<i>HERC2</i>	rs916977	A	G	Europeans	EastAfricans	0.002182	5.97E-04	2.60E-04
<i>HERC2</i>	rs1667394	G	A	Europeans	EastAfricans	0.002175	5.97E-04	2.72E-04
<i>SLC24A5</i>	rs1426654	G	A	Europeans	EastAfricans	0.003205	5.94E-04	0
<i>MYO5A</i>	rs4776053	C	T	Europeans	EastAfricans	3.64E-04	5.65E-04	0.518997
<i>MC1R</i>	rs2228479	G	A	Europeans	EastAfricans	0.001173	7.71E-04	0.128136
<i>MC1R</i>	rs885479	G	A	Europeans	EastAfricans	0.001183	7.71E-04	0.124649
<i>MFSN12</i>	rs56203814	C	T	Europeans	EastAfricans	-0.001548	5.81E-04	0.007776
<i>MFSN12</i>	rs10424065	C	T	Europeans	EastAfricans	-0.002352	5.78E-04	4.60E-05
<i>MFSN12</i>	rs6510760	G	A	Europeans	EastAfricans	-0.002269	5.76E-04	8.10E-05
<i>MFSN12</i>	rs112332856	T	C	Europeans	EastAfricans	-0.00259	5.77E-04	7.00E-06
<i>ASIP</i>	rs6119471	G	C	Europeans	EastAfricans	0.002737	7.73E-04	3.98E-04
<i>ASIP</i>	rs6058017	G	A	Europeans	EastAfricans	0.001219	5.51E-04	0.026928
<i>PIGU</i>	rs2378249	A	G	Europeans	EastAfricans	3.14E-04	5.65E-04	0.578311
<i>SLC45A2</i>	rs16891982	C	G	Europeans	WestAfricans	0.00263	4.79E-04	0
<i>SLC45A2</i>	rs28777	C	A	Europeans	WestAfricans	0.001508	4.52E-04	8.40E-04
<i>SLC45A2</i>	rs26722	C	T	Europeans	WestAfricans	-2.48E-04	4.55E-04	0.585986

<i>EXOC2</i>	rs4959270	C	A	Europeans	WestAfricans	3.28E-04	4.50E-04	0.465309
<i>TYRP1</i>	rs1408799	T	C	Europeans	WestAfricans	6.83E-04	4.50E-04	0.128978
<i>TYRP1</i>	rs683	A	C	Europeans	WestAfricans	-8.97E-04	4.50E-04	0.046465
<i>BNC2</i>	rs10756819	G	A	Europeans	WestAfricans	9.96E-04	4.51E-04	0.027057
<i>BNC2</i>	rs12350739	G	A	Europeans	WestAfricans	0.00186	4.88E-04	1.39E-04
<i>DDB1</i>	rs11230664	C	T	Europeans	WestAfricans	0.001682	4.58E-04	2.38E-04
<i>DDB1</i>	rs7120594	T	C	Europeans	WestAfricans	0.001719	4.64E-04	2.09E-04
<i>DDB1</i>	rs7948623	A	T	Europeans	WestAfricans	-0.001286	4.66E-04	0.005809
<i>DDB1</i>	rs1377457	C	A	Europeans	WestAfricans	0.001757	4.59E-04	1.31E-04
<i>TPCN2</i>	rs35264875	A	T	Europeans	WestAfricans	0.001083	4.64E-04	0.019467
<i>TPCN2</i>	rs3829241	G	A	Europeans	WestAfricans	9.58E-04	4.53E-04	0.034415
<i>TYR</i>	rs1042602	C	A	Europeans	WestAfricans	0.001495	4.77E-04	0.001739
<i>TYR</i>	rs1393350	G	A	Europeans	WestAfricans	0.001893	6.21E-04	0.002296
<i>TYR</i>	rs1126809	G	A	Europeans	WestAfricans	0.001317	4.78E-04	0.005828
<i>KITLG</i>	rs642742	A	G	Europeans	WestAfricans	0.001239	4.51E-04	0.005976
<i>KITLG</i>	rs12821256	T	C	Europeans	WestAfricans	0.00173	6.21E-04	0.005338
<i>DCT</i>	rs1407995	T	C	Europeans	WestAfricans	6.70E-05	4.50E-04	0.881067
<i>DCT</i>	rs2031526	G	A	Europeans	WestAfricans	3.96E-04	4.51E-04	0.380466
<i>SLC24A4</i>	rs12896399	G	T	Europeans	WestAfricans	0.001753	4.88E-04	3.32E-04
<i>SLC24A4</i>	rs2402130	G	A	Europeans	WestAfricans	5.91E-04	4.50E-04	0.188372
<i>OCA2</i>	rs2311843	C	T	Europeans	WestAfricans	5.25E-04	4.54E-04	0.246673
<i>OCA2</i>	rs1800414	A	G	Europeans	WestAfricans	2.26E-04	6.68E-04	0.734638
<i>OCA2</i>	rs1800404	C	T	Europeans	WestAfricans	0.001079	4.50E-04	0.016588
<i>OCA2</i>	rs1800401	C	T	Europeans	WestAfricans	-4.49E-04	4.51E-04	0.320382
<i>HERC2</i>	rs1129038	G	A	Europeans	WestAfricans	0.00197	4.69E-04	2.70E-05
<i>HERC2</i>	rs12913832	A	G	Europeans	WestAfricans	0.001964	4.69E-04	2.80E-05
<i>HERC2</i>	rs916977	A	G	Europeans	WestAfricans	0.001317	4.51E-04	0.003482
<i>HERC2</i>	rs1667394	G	A	Europeans	WestAfricans	0.001354	4.51E-04	0.002681
<i>SLC24A5</i>	rs1426654	G	A	Europeans	WestAfricans	0.002367	4.60E-04	0

<i>MYO5A</i>	rs4776053	C	T	Europeans	WestAfricans	1.97E-04	4.51E-04	0.661346
<i>MC1R</i>	rs2228479	G	A	Europeans	WestAfricans	0.001567	6.21E-04	0.011649
<i>MC1R</i>	rs885479	G	A	Europeans	WestAfricans	0.001576	6.21E-04	0.011201
<i>MFS12</i>	rs56203814	C	T	Europeans	WestAfricans	-0.001347	4.72E-04	0.004295
<i>MFS12</i>	rs10424065	C	T	Europeans	WestAfricans	-0.001503	4.71E-04	0.001434
<i>MFS12</i>	rs6510760	G	A	Europeans	WestAfricans	-0.001407	4.51E-04	0.001801
<i>MFS12</i>	rs112332856	T	C	Europeans	WestAfricans	-0.001501	4.52E-04	8.93E-04
<i>ASIP</i>	rs6119471	G	C	Europeans	WestAfricans	0.002735	6.21E-04	1.10E-05
<i>ASIP</i>	rs6058017	G	A	Europeans	WestAfricans	0.001095	4.50E-04	0.015015
<i>PIGU</i>	rs2378249	A	G	Europeans	WestAfricans	-8.40E-05	4.50E-04	0.852618
<i>SLC45A2</i>	rs16891982	C	G	NorthAsians	Oceanians	2.09E-04	6.90E-04	0.761863
<i>SLC45A2</i>	rs28777	C	A	NorthAsians	Oceanians	-7.11E-04	6.59E-04	0.280548
<i>SLC45A2</i>	rs26722	C	T	NorthAsians	Oceanians	7.70E-05	6.62E-04	0.907271
<i>EXOC2</i>	rs4959270	C	A	NorthAsians	Oceanians	-0.001411	6.72E-04	0.03568
<i>TYRP1</i>	rs1408799	T	C	NorthAsians	Oceanians	-8.50E-05	7.99E-04	0.915284
<i>TYRP1</i>	rs683	A	C	NorthAsians	Oceanians	-3.28E-04	7.79E-04	0.67392
<i>BNC2</i>	rs10756819	G	A	NorthAsians	Oceanians	1.32E-04	6.56E-04	0.840146
<i>BNC2</i>	rs12350739	G	A	NorthAsians	Oceanians	5.27E-04	9.83E-04	0.591614
<i>DDB1</i>	rs11230664	C	T	NorthAsians	Oceanians	0.002999	9.63E-04	0.001845
<i>DDB1</i>	rs7120594	T	C	NorthAsians	Oceanians	0.002999	9.63E-04	0.001845
<i>DDB1</i>	rs7948623	A	T	NorthAsians	Oceanians	-0.002904	9.63E-04	0.00257
<i>DDB1</i>	rs1377457	C	A	NorthAsians	Oceanians	0.002999	9.63E-04	0.001845
<i>TPCN2</i>	rs35264875	A	T	NorthAsians	Oceanians	-0.001741	6.91E-04	0.011742
<i>TPCN2</i>	rs3829241	G	A	NorthAsians	Oceanians	0.001063	7.01E-04	0.12938
<i>TYR</i>	rs1042602	C	A	NorthAsians	Oceanians	4.72E-04	9.85E-04	0.631774
<i>TYR</i>	rs1393350	G	A	NorthAsians	Oceanians	-8.40E-05	0.00104	0.935849
<i>TYR</i>	rs1126809	G	A	NorthAsians	Oceanians	-8.40E-05	0.00104	0.935849
<i>KITLG</i>	rs642742	A	G	NorthAsians	Oceanians	2.60E-04	6.66E-04	0.696333
<i>KITLG</i>	rs12821256	T	C	NorthAsians	Oceanians	-6.35E-04	0.00119	0.593386

<i>DCT</i>	rs1407995	T	C	NorthAsians	Oceanians	-5.75E-04	6.57E-04	0.381764
<i>DCT</i>	rs2031526	G	A	NorthAsians	Oceanians	5.75E-04	6.57E-04	0.381764
<i>SLC24A4</i>	rs12896399	G	T	NorthAsians	Oceanians	-5.34E-04	6.57E-04	0.416225
<i>SLC24A4</i>	rs2402130	G	A	NorthAsians	Oceanians	8.10E-05	6.70E-04	0.903342
<i>OCA2</i>	rs2311843	C	T	NorthAsians	Oceanians	5.03E-04	6.58E-04	0.444072
<i>OCA2</i>	rs1800414	A	G	NorthAsians	Oceanians	-5.92E-04	6.70E-04	0.376725
<i>OCA2</i>	rs1800404	C	T	NorthAsians	Oceanians	0.001338	6.62E-04	0.04329
<i>OCA2</i>	rs1800401	C	T	NorthAsians	Oceanians	6.21E-04	9.78E-04	0.525882
<i>HERC2</i>	rs1129038	G	A	NorthAsians	Oceanians	1.74E-04	0.001008	0.862992
<i>HERC2</i>	rs12913832	A	G	NorthAsians	Oceanians	1.74E-04	0.001008	0.862992
<i>HERC2</i>	rs916977	A	G	NorthAsians	Oceanians	-3.76E-04	6.57E-04	0.567236
<i>HERC2</i>	rs1667394	G	A	NorthAsians	Oceanians	-3.76E-04	6.57E-04	0.567236
<i>SLC24A5</i>	rs1426654	G	A	NorthAsians	Oceanians	9.81E-04	7.68E-04	0.201703
<i>MYO5A</i>	rs4776053	C	T	NorthAsians	Oceanians	0.001571	7.65E-04	0.04014
<i>MC1R</i>	rs2228479	G	A	NorthAsians	Oceanians	6.21E-04	6.75E-04	0.357846
<i>MC1R</i>	rs885479	G	A	NorthAsians	Oceanians	0.001875	7.21E-04	0.009264
<i>MFS12</i>	rs56203814	C	T	NorthAsians	Oceanians	-6.35E-04	0.00119	0.593386
<i>MFS12</i>	rs10424065	C	T	NorthAsians	Oceanians	-6.35E-04	0.00119	0.593386
<i>MFS12</i>	rs6510760	G	A	NorthAsians	Oceanians	-0.001476	6.69E-04	0.027402
<i>MFS12</i>	rs112332856	T	C	NorthAsians	Oceanians	-0.002041	7.73E-04	0.008293
<i>ASIP</i>	rs6119471	G	C	NorthAsians	Oceanians	6.35E-04	0.00119	0.593386
<i>ASIP</i>	rs6058017	G	A	NorthAsians	Oceanians	0.001111	7.05E-04	0.115076
<i>PIGU</i>	rs2378249	A	G	NorthAsians	Oceanians	3.90E-04	6.70E-04	0.560041
<i>SLC45A2</i>	rs16891982	C	G	NorthAsians	EastAsians	0.001997	5.71E-04	4.71E-04
<i>SLC45A2</i>	rs28777	C	A	NorthAsians	EastAsians	2.38E-04	5.38E-04	0.657895
<i>SLC45A2</i>	rs26722	C	T	NorthAsians	EastAsians	-4.67E-04	5.31E-04	0.378937
<i>EXOC2</i>	rs4959270	C	A	NorthAsians	EastAsians	-1.62E-04	5.30E-04	0.759375
<i>TYRP1</i>	rs1408799	T	C	NorthAsians	EastAsians	6.00E-06	6.46E-04	0.992184
<i>TYRP1</i>	rs683	A	C	NorthAsians	EastAsians	-0.001162	6.01E-04	0.053093

<i>BNC2</i>	rs10756819	G	A	NorthAsians	EastAsians	3.40E-05	5.28E-04	0.948733
<i>BNC2</i>	rs12350739	G	A	NorthAsians	EastAsians	0.001035	6.65E-04	0.119833
<i>DDB1</i>	rs11230664	C	T	NorthAsians	EastAsians	0.002143	0.001209	0.076471
<i>DDB1</i>	rs7120594	T	C	NorthAsians	EastAsians	0.002143	0.001209	0.076471
<i>DDB1</i>	rs7948623	A	T	NorthAsians	EastAsians	1.30E-04	0.001274	0.918425
<i>DDB1</i>	rs1377457	C	A	NorthAsians	EastAsians	8.83E-04	0.001224	0.470813
<i>TPCN2</i>	rs35264875	A	T	NorthAsians	EastAsians	7.44E-04	6.52E-04	0.253889
<i>TPCN2</i>	rs3829241	G	A	NorthAsians	EastAsians	4.87E-04	5.30E-04	0.358337
<i>TYR</i>	rs1042602	C	A	NorthAsians	EastAsians	0.002093	7.99E-04	0.008792
<i>TYR</i>	rs1393350	G	A	NorthAsians	EastAsians	9.79E-04	9.13E-04	0.28368
<i>TYR</i>	rs1126809	G	A	NorthAsians	EastAsians	0.001632	0.001029	0.112903
<i>KITLG</i>	rs642742	A	G	NorthAsians	EastAsians	4.33E-04	5.40E-04	0.422821
<i>KITLG</i>	rs12821256	T	C	NorthAsians	EastAsians	7.83E-04	0.001359	0.564616
<i>DCT</i>	rs1407995	T	C	NorthAsians	EastAsians	1.19E-04	5.31E-04	0.822512
<i>DCT</i>	rs2031526	G	A	NorthAsians	EastAsians	-1.25E-04	5.31E-04	0.813192
<i>SLC24A4</i>	rs12896399	G	T	NorthAsians	EastAsians	-4.70E-05	5.30E-04	0.928955
<i>SLC24A4</i>	rs2402130	G	A	NorthAsians	EastAsians	-6.70E-04	5.43E-04	0.217046
<i>OCA2</i>	rs2311843	C	T	NorthAsians	EastAsians	-4.50E-05	5.33E-04	0.933321
<i>OCA2</i>	rs1800414	A	G	NorthAsians	EastAsians	-0.002186	5.52E-04	7.40E-05
<i>OCA2</i>	rs1800404	C	T	NorthAsians	EastAsians	0.0018	5.40E-04	8.52E-04
<i>OCA2</i>	rs1800401	C	T	NorthAsians	EastAsians	9.92E-04	6.41E-04	0.122014
<i>HERC2</i>	rs1129038	G	A	NorthAsians	EastAsians	0.001182	7.99E-04	0.139204
<i>HERC2</i>	rs12913832	A	G	NorthAsians	EastAsians	0.001375	8.22E-04	0.094386
<i>HERC2</i>	rs916977	A	G	NorthAsians	EastAsians	1.14E-04	5.30E-04	0.829383
<i>HERC2</i>	rs1667394	G	A	NorthAsians	EastAsians	1.16E-04	5.30E-04	0.826312
<i>SLC24A5</i>	rs1426654	G	A	NorthAsians	EastAsians	0.002017	5.61E-04	3.21E-04
<i>MYO5A</i>	rs4776053	C	T	NorthAsians	EastAsians	7.61E-04	5.30E-04	0.1509
<i>MC1R</i>	rs2228479	G	A	NorthAsians	EastAsians	2.90E-05	5.30E-04	0.956249
<i>MC1R</i>	rs885479	G	A	NorthAsians	EastAsians	5.40E-05	5.29E-04	0.918692

<i>MFSD12</i>	rs56203814	C	T	NorthAsians	EastAsians	0.001629	0.001624	0.315933
<i>MFSD12</i>	rs10424065	C	T	NorthAsians	EastAsians	7.83E-04	0.001359	0.564616
<i>MFSD12</i>	rs6510760	G	A	NorthAsians	EastAsians	-3.00E-06	5.71E-04	0.996409
<i>MFSD12</i>	rs112332856	T	C	NorthAsians	EastAsians	2.50E-04	8.55E-04	0.769913
<i>ASIP</i>	rs6119471	G	C	NorthAsians	EastAsians	-0.001629	0.001624	0.315933
<i>ASIP</i>	rs6058017	G	A	NorthAsians	EastAsians	0.002077	6.35E-04	0.001071
<i>PIGU</i>	rs2378249	A	G	NorthAsians	EastAsians	4.42E-04	5.32E-04	0.405868
<i>SLC45A2</i>	rs16891982	C	G	NorthAsians	EastAfricans	8.87E-04	7.11E-04	0.21234
<i>SLC45A2</i>	rs28777	C	A	NorthAsians	EastAfricans	-2.13E-04	6.41E-04	0.740327
<i>SLC45A2</i>	rs26722	C	T	NorthAsians	EastAfricans	6.67E-04	6.52E-04	0.306577
<i>EXOC2</i>	rs4959270	C	A	NorthAsians	EastAfricans	7.26E-04	6.52E-04	0.26576
<i>TYRP1</i>	rs1408799	T	C	NorthAsians	EastAfricans	-0.001054	6.63E-04	0.11218
<i>TYRP1</i>	rs683	A	C	NorthAsians	EastAfricans	6.40E-04	6.50E-04	0.325313
<i>BNC2</i>	rs10756819	G	A	NorthAsians	EastAfricans	0.001578	6.80E-04	0.020383
<i>BNC2</i>	rs12350739	G	A	NorthAsians	EastAfricans	6.41E-04	8.53E-04	0.45233
<i>DDB1</i>	rs11230664	C	T	NorthAsians	EastAfricans	0.003418	8.48E-04	5.50E-05
<i>DDB1</i>	rs7120594	T	C	NorthAsians	EastAfricans	0.0029	8.39E-04	5.48E-04
<i>DDB1</i>	rs7948623	A	T	NorthAsians	EastAfricans	-0.002597	8.38E-04	0.001932
<i>DDB1</i>	rs1377457	C	A	NorthAsians	EastAfricans	0.00348	8.50E-04	4.20E-05
<i>TPCN2</i>	rs35264875	A	T	NorthAsians	EastAfricans	-8.49E-04	6.62E-04	0.199751
<i>TPCN2</i>	rs3829241	G	A	NorthAsians	EastAfricans	0.001194	6.80E-04	0.079327
<i>TYR</i>	rs1042602	C	A	NorthAsians	EastAfricans	5.99E-04	8.55E-04	0.48367
<i>TYR</i>	rs1393350	G	A	NorthAsians	EastAfricans	1.71E-04	8.92E-04	0.848096
<i>TYR</i>	rs1126809	G	A	NorthAsians	EastAfricans	1.71E-04	8.92E-04	0.848096
<i>KITLG</i>	rs642742	A	G	NorthAsians	EastAfricans	0.001497	6.46E-04	0.020482
<i>KITLG</i>	rs12821256	T	C	NorthAsians	EastAfricans	-0.001347	8.46E-04	0.111491
<i>DCT</i>	rs1407995	T	C	NorthAsians	EastAfricans	-9.80E-04	6.42E-04	0.126771
<i>DCT</i>	rs2031526	G	A	NorthAsians	EastAfricans	0.001545	6.59E-04	0.019011
<i>SLC24A4</i>	rs12896399	G	T	NorthAsians	EastAfricans	7.73E-04	6.52E-04	0.235596

<i>SLC24A4</i>	rs2402130	G	A	NorthAsians	EastAfricans	7.24E-04	6.40E-04	0.258123
<i>OCA2</i>	rs2311843	C	T	NorthAsians	EastAfricans	0.002135	7.09E-04	0.002614
<i>OCA2</i>	rs1800414	A	G	NorthAsians	EastAfricans	0.001157	8.40E-04	0.168583
<i>OCA2</i>	rs1800404	C	T	NorthAsians	EastAfricans	0.001969	6.63E-04	0.002979
<i>OCA2</i>	rs1800401	C	T	NorthAsians	EastAfricans	-1.46E-04	6.78E-04	0.829763
<i>HERC2</i>	rs1129038	G	A	NorthAsians	EastAfricans	3.69E-04	8.70E-04	0.671346
<i>HERC2</i>	rs12913832	A	G	NorthAsians	EastAfricans	3.69E-04	8.70E-04	0.671346
<i>HERC2</i>	rs916977	A	G	NorthAsians	EastAfricans	0.001139	6.81E-04	0.094325
<i>HERC2</i>	rs1667394	G	A	NorthAsians	EastAfricans	0.001139	6.81E-04	0.094325
<i>SLC24A5</i>	rs1426654	G	A	NorthAsians	EastAfricans	6.60E-04	6.70E-04	0.324444
<i>MYO5A</i>	rs4776053	C	T	NorthAsians	EastAfricans	8.34E-04	6.52E-04	0.200935
<i>MC1R</i>	rs2228479	G	A	NorthAsians	EastAfricans	0.001772	8.37E-04	0.034127
<i>MC1R</i>	rs885479	G	A	NorthAsians	EastAfricans	0.002309	8.36E-04	0.005774
<i>MFS12</i>	rs56203814	C	T	NorthAsians	EastAfricans	-0.001695	8.40E-04	0.043614
<i>MFS12</i>	rs10424065	C	T	NorthAsians	EastAfricans	-0.0025	8.37E-04	0.002835
<i>MFS12</i>	rs6510760	G	A	NorthAsians	EastAfricans	-0.002355	6.68E-04	4.27E-04
<i>MFS12</i>	rs112332856	T	C	NorthAsians	EastAfricans	-0.003174	7.30E-04	1.40E-05
<i>ASIP</i>	rs6119471	G	C	NorthAsians	EastAfricans	0.002038	8.38E-04	0.014996
<i>ASIP</i>	rs6058017	G	A	NorthAsians	EastAfricans	0.001952	6.63E-04	0.003258
<i>PIGU</i>	rs2378249	A	G	NorthAsians	EastAfricans	6.67E-04	6.52E-04	0.306577
<i>SLC45A2</i>	rs16891982	C	G	NorthAsians	WestAfricans	0.001087	5.44E-04	0.045692
<i>SLC45A2</i>	rs28777	C	A	NorthAsians	WestAfricans	2.00E-06	5.19E-04	0.997565
<i>SLC45A2</i>	rs26722	C	T	NorthAsians	WestAfricans	6.09E-04	5.20E-04	0.240886
<i>EXOC2</i>	rs4959270	C	A	NorthAsians	WestAfricans	1.29E-04	5.18E-04	0.803923
<i>TYRP1</i>	rs1408799	T	C	NorthAsians	WestAfricans	-7.09E-04	5.36E-04	0.185954
<i>TYRP1</i>	rs683	A	C	NorthAsians	WestAfricans	2.45E-04	5.26E-04	0.641416
<i>BNC2</i>	rs10756819	G	A	NorthAsians	WestAfricans	8.84E-04	5.19E-04	0.088369
<i>BNC2</i>	rs12350739	G	A	NorthAsians	WestAfricans	6.60E-04	5.67E-04	0.244361
<i>DDB1</i>	rs11230664	C	T	NorthAsians	WestAfricans	0.002097	6.71E-04	0.001773

<i>DDB1</i>	rs7120594	T	C	NorthAsians	WestAfricans	0.00197	6.71E-04	0.003326
<i>DDB1</i>	rs7948623	A	T	NorthAsians	WestAfricans	-0.00149	6.71E-04	0.026434
<i>DDB1</i>	rs1377457	C	A	NorthAsians	WestAfricans	0.002116	6.71E-04	0.001611
<i>TPCN2</i>	rs35264875	A	T	NorthAsians	WestAfricans	3.46E-04	5.46E-04	0.525583
<i>TPCN2</i>	rs3829241	G	A	NorthAsians	WestAfricans	8.71E-04	5.21E-04	0.094207
<i>TYR</i>	rs1042602	C	A	NorthAsians	WestAfricans	5.24E-04	5.59E-04	0.348536
<i>TYR</i>	rs1393350	G	A	NorthAsians	WestAfricans	7.78E-04	7.15E-04	0.276486
<i>TYR</i>	rs1126809	G	A	NorthAsians	WestAfricans	1.87E-04	5.95E-04	0.752689
<i>KITLG</i>	rs642742	A	G	NorthAsians	WestAfricans	0.001333	5.20E-04	0.010391
<i>KITLG</i>	rs12821256	T	C	NorthAsians	WestAfricans	4.44E-04	7.96E-04	0.577185
<i>DCT</i>	rs1407995	T	C	NorthAsians	WestAfricans	-6.74E-04	5.18E-04	0.193307
<i>DCT</i>	rs2031526	G	A	NorthAsians	WestAfricans	0.001135	5.19E-04	0.028743
<i>SLC24A4</i>	rs12896399	G	T	NorthAsians	WestAfricans	0.001583	5.52E-04	0.004124
<i>SLC24A4</i>	rs2402130	G	A	NorthAsians	WestAfricans	7.00E-04	5.19E-04	0.177234
<i>OCA2</i>	rs2311843	C	T	NorthAsians	WestAfricans	0.001468	5.21E-04	0.004867
<i>OCA2</i>	rs1800414	A	G	NorthAsians	WestAfricans	0.001555	6.75E-04	0.021184
<i>OCA2</i>	rs1800404	C	T	NorthAsians	WestAfricans	0.001201	5.20E-04	0.020896
<i>OCA2</i>	rs1800401	C	T	NorthAsians	WestAfricans	-5.74E-04	5.31E-04	0.280179
<i>HERC2</i>	rs1129038	G	A	NorthAsians	WestAfricans	2.35E-04	5.67E-04	0.678681
<i>HERC2</i>	rs12913832	A	G	NorthAsians	WestAfricans	2.35E-04	5.67E-04	0.678681
<i>HERC2</i>	rs916977	A	G	NorthAsians	WestAfricans	4.95E-04	5.19E-04	0.33946
<i>HERC2</i>	rs1667394	G	A	NorthAsians	WestAfricans	5.38E-04	5.19E-04	0.30001
<i>SLC24A5</i>	rs1426654	G	A	NorthAsians	WestAfricans	3.62E-04	5.21E-04	0.486252
<i>MYO5A</i>	rs4776053	C	T	NorthAsians	WestAfricans	5.67E-04	5.18E-04	0.273699
<i>MC1R</i>	rs2228479	G	A	NorthAsians	WestAfricans	0.00204	6.72E-04	0.002397
<i>MC1R</i>	rs885479	G	A	NorthAsians	WestAfricans	0.002462	6.72E-04	2.46E-04
<i>MFS12</i>	rs56203814	C	T	NorthAsians	WestAfricans	-0.001463	6.71E-04	0.029258
<i>MFS12</i>	rs10424065	C	T	NorthAsians	WestAfricans	-0.001619	6.71E-04	0.01582
<i>MFS12</i>	rs6510760	G	A	NorthAsians	WestAfricans	-0.001475	5.24E-04	0.004891

<i>MFSD12</i>	rs112332856	T	C	NorthAsians	WestAfricans	-0.001961	5.73E-04	6.16E-04
<i>ASIP</i>	rs6119471	G	C	NorthAsians	WestAfricans	0.002184	6.71E-04	0.001134
<i>ASIP</i>	rs6058017	G	A	NorthAsians	WestAfricans	0.001673	5.36E-04	0.001802
<i>PIGU</i>	rs2378249	A	G	NorthAsians	WestAfricans	1.95E-04	5.18E-04	0.707335
<i>SLC45A2</i>	rs16891982	C	G	Oceanians	EastAsians	0.001089	6.67E-04	0.102701
<i>SLC45A2</i>	rs28777	C	A	Oceanians	EastAsians	8.66E-04	6.28E-04	0.167747
<i>SLC45A2</i>	rs26722	C	T	Oceanians	EastAsians	-3.81E-04	6.32E-04	0.546907
<i>EXOC2</i>	rs4959270	C	A	Oceanians	EastAsians	0.001306	6.43E-04	0.042308
<i>TYRP1</i>	rs1408799	T	C	Oceanians	EastAsians	8.90E-05	7.45E-04	0.904817
<i>TYRP1</i>	rs683	A	C	Oceanians	EastAsians	-4.27E-04	7.49E-04	0.568553
<i>BNC2</i>	rs10756819	G	A	Oceanians	EastAsians	-1.10E-04	6.27E-04	0.860449
<i>BNC2</i>	rs12350739	G	A	Oceanians	EastAsians	1.45E-04	9.51E-04	0.8785
<i>DDB1</i>	rs11230664	C	T	Oceanians	EastAsians	-0.001606	6.30E-04	0.010798
<i>DDB1</i>	rs7120594	T	C	Oceanians	EastAsians	-0.001606	6.30E-04	0.010798
<i>DDB1</i>	rs7948623	A	T	Oceanians	EastAsians	0.002989	6.82E-04	1.20E-05
<i>DDB1</i>	rs1377457	C	A	Oceanians	EastAsians	-0.002425	6.42E-04	1.59E-04
<i>TPCN2</i>	rs35264875	A	T	Oceanians	EastAsians	0.002225	6.40E-04	5.03E-04
<i>TPCN2</i>	rs3829241	G	A	Oceanians	EastAsians	-7.46E-04	6.73E-04	0.267951
<i>TYR</i>	rs1042602	C	A	Oceanians	EastAsians	8.89E-04	9.91E-04	0.369733
<i>TYR</i>	rs1393350	G	A	Oceanians	EastAsians	7.20E-04	9.76E-04	0.460701
<i>TYR</i>	rs1126809	G	A	Oceanians	EastAsians	0.001144	0.001024	0.26368
<i>KITLG</i>	rs642742	A	G	Oceanians	EastAsians	2.10E-05	6.34E-04	0.973094
<i>KITLG</i>	rs12821256	T	C	Oceanians	EastAsians	0.001144	0.001024	0.26368
<i>DCT</i>	rs1407995	T	C	Oceanians	EastAsians	6.52E-04	6.28E-04	0.298811
<i>DCT</i>	rs2031526	G	A	Oceanians	EastAsians	-6.56E-04	6.28E-04	0.295756
<i>SLC24A4</i>	rs12896399	G	T	Oceanians	EastAsians	5.03E-04	6.28E-04	0.422541
<i>SLC24A4</i>	rs2402130	G	A	Oceanians	EastAsians	-5.17E-04	6.40E-04	0.418887
<i>OCA2</i>	rs2311843	C	T	Oceanians	EastAsians	-5.32E-04	6.28E-04	0.396381
<i>OCA2</i>	rs1800414	A	G	Oceanians	EastAsians	-8.29E-04	6.33E-04	0.190345

<i>OCA2</i>	rs1800404	C	T	Oceanians	EastAsians	-1.68E-04	6.29E-04	0.789951
<i>OCA2</i>	rs1800401	C	T	Oceanians	EastAsians	2.40E-05	9.48E-04	0.979833
<i>HERC2</i>	rs1129038	G	A	Oceanians	EastAsians	5.94E-04	9.68E-04	0.539336
<i>HERC2</i>	rs12913832	A	G	Oceanians	EastAsians	7.20E-04	9.76E-04	0.460701
<i>HERC2</i>	rs916977	A	G	Oceanians	EastAsians	4.50E-04	6.27E-04	0.473124
<i>HERC2</i>	rs1667394	G	A	Oceanians	EastAsians	4.51E-04	6.27E-04	0.471789
<i>SLC24A5</i>	rs1426654	G	A	Oceanians	EastAsians	3.31E-04	7.48E-04	0.658389
<i>MYO5A</i>	rs4776053	C	T	Oceanians	EastAsians	-0.001076	7.41E-04	0.146351
<i>MC1R</i>	rs2228479	G	A	Oceanians	EastAsians	-6.02E-04	6.47E-04	0.351911
<i>MC1R</i>	rs885479	G	A	Oceanians	EastAsians	-0.00184	6.94E-04	0.008036
<i>MFS12</i>	rs56203814	C	T	Oceanians	EastAsians	0.001694	0.001175	0.149534
<i>MFS12</i>	rs10424065	C	T	Oceanians	EastAsians	0.001144	0.001024	0.26368
<i>MFS12</i>	rs6510760	G	A	Oceanians	EastAsians	0.001475	6.29E-04	0.019026
<i>MFS12</i>	rs112332856	T	C	Oceanians	EastAsians	0.002203	6.52E-04	7.21E-04
<i>ASIP</i>	rs6119471	G	C	Oceanians	EastAsians	-0.001694	0.001175	0.149534
<i>ASIP</i>	rs6058017	G	A	Oceanians	EastAsians	2.40E-04	6.38E-04	0.707433
<i>PIGU</i>	rs2378249	A	G	Oceanians	EastAsians	-1.03E-04	6.41E-04	0.872447
<i>SLC45A2</i>	rs16891982	C	G	Oceanians	EastAfricans	7.26E-04	7.29E-04	0.318758
<i>SLC45A2</i>	rs28777	C	A	Oceanians	EastAfricans	3.35E-04	6.44E-04	0.603448
<i>SLC45A2</i>	rs26722	C	T	Oceanians	EastAfricans	6.08E-04	6.59E-04	0.356442
<i>EXOC2</i>	rs4959270	C	A	Oceanians	EastAfricans	0.001811	6.65E-04	0.006465
<i>TYRP1</i>	rs1408799	T	C	Oceanians	EastAfricans	-9.88E-04	7.12E-04	0.164947
<i>TYRP1</i>	rs683	A	C	Oceanians	EastAfricans	8.92E-04	7.13E-04	0.210637
<i>BNC2</i>	rs10756819	G	A	Oceanians	EastAfricans	0.001476	6.84E-04	0.031069
<i>BNC2</i>	rs12350739	G	A	Oceanians	EastAfricans	2.35E-04	9.97E-04	0.813429
<i>DDB1</i>	rs11230664	C	T	Oceanians	EastAfricans	0.001111	6.56E-04	0.090412
<i>DDB1</i>	rs7120594	T	C	Oceanians	EastAfricans	5.94E-04	6.45E-04	0.357396
<i>DDB1</i>	rs7948623	A	T	Oceanians	EastAfricans	-3.64E-04	6.43E-04	0.57195
<i>DDB1</i>	rs1377457	C	A	Oceanians	EastAfricans	0.001174	6.59E-04	0.074815

<i>TPCN2</i>	rs35264875	A	T	Oceanians	EastAfricans	4.90E-04	6.46E-04	0.448032
<i>TPCN2</i>	rs3829241	G	A	Oceanians	EastAfricans	3.77E-04	7.10E-04	0.59576
<i>TYR</i>	rs1042602	C	A	Oceanians	EastAfricans	2.35E-04	9.97E-04	0.813429
<i>TYR</i>	rs1393350	G	A	Oceanians	EastAfricans	2.35E-04	9.97E-04	0.813429
<i>TYR</i>	rs1126809	G	A	Oceanians	EastAfricans	2.35E-04	9.97E-04	0.813429
<i>KITLG</i>	rs642742	A	G	Oceanians	EastAfricans	0.001297	6.52E-04	0.04667
<i>KITLG</i>	rs12821256	T	C	Oceanians	EastAfricans	-8.58E-04	8.47E-04	0.310831
<i>DCT</i>	rs1407995	T	C	Oceanians	EastAfricans	-5.38E-04	6.46E-04	0.404862
<i>DCT</i>	rs2031526	G	A	Oceanians	EastAfricans	0.001103	6.63E-04	0.096146
<i>SLC24A4</i>	rs12896399	G	T	Oceanians	EastAfricans	0.001184	6.56E-04	0.071209
<i>SLC24A4</i>	rs2402130	G	A	Oceanians	EastAfricans	6.62E-04	6.49E-04	0.308068
<i>OCA2</i>	rs2311843	C	T	Oceanians	EastAfricans	0.001748	7.13E-04	0.014191
<i>OCA2</i>	rs1800414	A	G	Oceanians	EastAfricans	0.001612	8.42E-04	0.055664
<i>OCA2</i>	rs1800404	C	T	Oceanians	EastAfricans	9.40E-04	6.66E-04	0.158276
<i>OCA2</i>	rs1800401	C	T	Oceanians	EastAfricans	-6.23E-04	8.55E-04	0.466227
<i>HERC2</i>	rs1129038	G	A	Oceanians	EastAfricans	2.35E-04	9.97E-04	0.813429
<i>HERC2</i>	rs12913832	A	G	Oceanians	EastAfricans	2.35E-04	9.97E-04	0.813429
<i>HERC2</i>	rs916977	A	G	Oceanians	EastAfricans	0.001428	6.85E-04	0.036998
<i>HERC2</i>	rs1667394	G	A	Oceanians	EastAfricans	0.001428	6.85E-04	0.036998
<i>SLC24A5</i>	rs1426654	G	A	Oceanians	EastAfricans	-9.40E-05	7.37E-04	0.898072
<i>MYO5A</i>	rs4776053	C	T	Oceanians	EastAfricans	-3.75E-04	7.23E-04	0.604181
<i>MC1R</i>	rs2228479	G	A	Oceanians	EastAfricans	0.001295	8.48E-04	0.126915
<i>MC1R</i>	rs885479	G	A	Oceanians	EastAfricans	8.67E-04	8.70E-04	0.319434
<i>MFS12</i>	rs56203814	C	T	Oceanians	EastAfricans	-0.001207	8.41E-04	0.151188
<i>MFS12</i>	rs10424065	C	T	Oceanians	EastAfricans	-0.002011	8.38E-04	0.016387
<i>MFS12</i>	rs6510760	G	A	Oceanians	EastAfricans	-0.001219	6.65E-04	0.066782
<i>MFS12</i>	rs112332856	T	C	Oceanians	EastAfricans	-0.001604	6.67E-04	0.016127
<i>ASIP</i>	rs6119471	G	C	Oceanians	EastAfricans	0.00155	8.38E-04	0.06457
<i>ASIP</i>	rs6058017	G	A	Oceanians	EastAfricans	0.001098	6.51E-04	0.091568

<i>PIGU</i>	rs2378249	A	G	Oceanians	EastAfricans	3.67E-04	6.64E-04	0.580531
<i>SLC45A2</i>	rs16891982	C	G	Oceanians	WestAfricans	9.61E-04	5.60E-04	0.086576
<i>SLC45A2</i>	rs28777	C	A	Oceanians	WestAfricans	4.33E-04	5.24E-04	0.408818
<i>SLC45A2</i>	rs26722	C	T	Oceanians	WestAfricans	5.63E-04	5.27E-04	0.286
<i>EXOC2</i>	rs4959270	C	A	Oceanians	WestAfricans	9.84E-04	5.31E-04	0.063704
<i>TYRP1</i>	rs1408799	T	C	Oceanians	WestAfricans	-6.57E-04	5.76E-04	0.253421
<i>TYRP1</i>	rs683	A	C	Oceanians	WestAfricans	4.44E-04	5.76E-04	0.441185
<i>BNC2</i>	rs10756819	G	A	Oceanians	WestAfricans	8.03E-04	5.25E-04	0.125638
<i>BNC2</i>	rs12350739	G	A	Oceanians	WestAfricans	3.40E-04	7.00E-04	0.626702
<i>DDB1</i>	rs11230664	C	T	Oceanians	WestAfricans	2.80E-04	5.24E-04	0.592903
<i>DDB1</i>	rs7120594	T	C	Oceanians	WestAfricans	1.52E-04	5.23E-04	0.771004
<i>DDB1</i>	rs7948623	A	T	Oceanians	WestAfricans	2.70E-04	5.24E-04	0.605794
<i>DDB1</i>	rs1377457	C	A	Oceanians	WestAfricans	2.99E-04	5.24E-04	0.568196
<i>TPCN2</i>	rs35264875	A	T	Oceanians	WestAfricans	0.001402	5.36E-04	0.008884
<i>TPCN2</i>	rs3829241	G	A	Oceanians	WestAfricans	2.27E-04	5.47E-04	0.677517
<i>TYR</i>	rs1042602	C	A	Oceanians	WestAfricans	2.38E-04	6.92E-04	0.730883
<i>TYR</i>	rs1393350	G	A	Oceanians	WestAfricans	8.29E-04	7.98E-04	0.299012
<i>TYR</i>	rs1126809	G	A	Oceanians	WestAfricans	2.38E-04	6.92E-04	0.730883
<i>KITLG</i>	rs642742	A	G	Oceanians	WestAfricans	0.001175	5.27E-04	0.025836
<i>KITLG</i>	rs12821256	T	C	Oceanians	WestAfricans	8.29E-04	7.98E-04	0.299012
<i>DCT</i>	rs1407995	T	C	Oceanians	WestAfricans	-3.25E-04	5.24E-04	0.534328
<i>DCT</i>	rs2031526	G	A	Oceanians	WestAfricans	7.87E-04	5.25E-04	0.133799
<i>SLC24A4</i>	rs12896399	G	T	Oceanians	WestAfricans	0.001906	5.57E-04	6.26E-04
<i>SLC24A4</i>	rs2402130	G	A	Oceanians	WestAfricans	6.51E-04	5.28E-04	0.217798
<i>OCA2</i>	rs2311843	C	T	Oceanians	WestAfricans	0.001163	5.27E-04	0.027279
<i>OCA2</i>	rs1800414	A	G	Oceanians	WestAfricans	0.001913	6.78E-04	0.004789
<i>OCA2</i>	rs1800404	C	T	Oceanians	WestAfricans	3.90E-04	5.25E-04	0.457676
<i>OCA2</i>	rs1800401	C	T	Oceanians	WestAfricans	-9.50E-04	6.74E-04	0.158555
<i>HERC2</i>	rs1129038	G	A	Oceanians	WestAfricans	1.29E-04	6.87E-04	0.850487

<i>HERC2</i>	rs12913832	A	G	Oceanians	WestAfricans	1.29E-04	6.87E-04	0.850487
<i>HERC2</i>	rs916977	A	G	Oceanians	WestAfricans	7.23E-04	5.24E-04	0.167892
<i>HERC2</i>	rs1667394	G	A	Oceanians	WestAfricans	7.65E-04	5.25E-04	0.144519
<i>SLC24A5</i>	rs1426654	G	A	Oceanians	WestAfricans	-2.32E-04	5.77E-04	0.687656
<i>MYO5A</i>	rs4776053	C	T	Oceanians	WestAfricans	-3.85E-04	5.76E-04	0.504393
<i>MC1R</i>	rs2228479	G	A	Oceanians	WestAfricans	0.001664	6.83E-04	0.014853
<i>MC1R</i>	rs885479	G	A	Oceanians	WestAfricans	0.001326	7.00E-04	0.05814
<i>MFSD12</i>	rs56203814	C	T	Oceanians	WestAfricans	-0.001078	6.73E-04	0.109476
<i>MFSD12</i>	rs10424065	C	T	Oceanians	WestAfricans	-0.001234	6.73E-04	0.066848
<i>MFSD12</i>	rs6510760	G	A	Oceanians	WestAfricans	-5.80E-04	5.24E-04	0.268324
<i>MFSD12</i>	rs112332856	T	C	Oceanians	WestAfricans	-7.24E-04	5.25E-04	0.167624
<i>ASIP</i>	rs6119471	G	C	Oceanians	WestAfricans	0.001799	6.73E-04	0.007547
<i>ASIP</i>	rs6058017	G	A	Oceanians	WestAfricans	9.99E-04	5.29E-04	0.058665
<i>PIGU</i>	rs2378249	A	G	Oceanians	WestAfricans	-4.20E-05	5.30E-04	0.936817
<i>SLC45A2</i>	rs16891982	C	G	EastAsians	EastAfricans	-1.11E-04	7.02E-04	0.873917
<i>SLC45A2</i>	rs28777	C	A	EastAsians	EastAfricans	-3.32E-04	6.27E-04	0.596567
<i>SLC45A2</i>	rs26722	C	T	EastAsians	EastAfricans	9.01E-04	6.39E-04	0.158605
<i>EXOC2</i>	rs4959270	C	A	EastAsians	EastAfricans	8.07E-04	6.39E-04	0.206507
<i>TYRP1</i>	rs1408799	T	C	EastAsians	EastAfricans	-0.001057	6.29E-04	0.093125
<i>TYRP1</i>	rs683	A	C	EastAsians	EastAfricans	0.001221	6.33E-04	0.053946
<i>BNC2</i>	rs10756819	G	A	EastAsians	EastAfricans	0.001561	6.68E-04	0.019443
<i>BNC2</i>	rs12350739	G	A	EastAsians	EastAfricans	1.24E-04	8.34E-04	0.882304
<i>DDB1</i>	rs11230664	C	T	EastAsians	EastAfricans	0.002346	6.40E-04	2.48E-04
<i>DDB1</i>	rs7120594	T	C	EastAsians	EastAfricans	0.001829	6.29E-04	0.003637
<i>DDB1</i>	rs7948623	A	T	EastAsians	EastAfricans	-0.002662	6.58E-04	5.20E-05
<i>DDB1</i>	rs1377457	C	A	EastAsians	EastAfricans	0.003039	6.50E-04	3.00E-06
<i>TPCN2</i>	rs35264875	A	T	EastAsians	EastAfricans	-0.001222	6.35E-04	0.05446
<i>TPCN2</i>	rs3829241	G	A	EastAsians	EastAfricans	9.51E-04	6.68E-04	0.154736
<i>TYR</i>	rs1042602	C	A	EastAsians	EastAfricans	-4.48E-04	8.61E-04	0.602762

<i>TYR</i>	rs1393350	G	A	EastAsians	EastAfricans	-3.19E-04	8.51E-04	0.708248
<i>TYR</i>	rs1126809	G	A	EastAsians	EastAfricans	-6.45E-04	8.84E-04	0.465599
<i>KITLG</i>	rs642742	A	G	EastAsians	EastAfricans	0.001281	6.31E-04	0.0423
<i>KITLG</i>	rs12821256	T	C	EastAsians	EastAfricans	-0.001738	7.10E-04	0.014326
<i>DCT</i>	rs1407995	T	C	EastAsians	EastAfricans	-0.00104	6.28E-04	0.098027
<i>DCT</i>	rs2031526	G	A	EastAsians	EastAfricans	0.001607	6.45E-04	0.012763
<i>SLC24A4</i>	rs12896399	G	T	EastAsians	EastAfricans	7.97E-04	6.39E-04	0.212191
<i>SLC24A4</i>	rs2402130	G	A	EastAsians	EastAfricans	0.001059	6.26E-04	0.090478
<i>OCA2</i>	rs2311843	C	T	EastAsians	EastAfricans	0.002157	6.97E-04	0.001962
<i>OCA2</i>	rs1800414	A	G	EastAsians	EastAfricans	0.002249	8.26E-04	0.006478
<i>OCA2</i>	rs1800404	C	T	EastAsians	EastAfricans	0.001069	6.48E-04	0.099004
<i>OCA2</i>	rs1800401	C	T	EastAsians	EastAfricans	-6.41E-04	6.56E-04	0.327988
<i>HERC2</i>	rs1129038	G	A	EastAsians	EastAfricans	-2.22E-04	8.46E-04	0.79322
<i>HERC2</i>	rs12913832	A	G	EastAsians	EastAfricans	-3.19E-04	8.51E-04	0.708248
<i>HERC2</i>	rs916977	A	G	EastAsians	EastAfricans	0.001082	6.68E-04	0.105386
<i>HERC2</i>	rs1667394	G	A	EastAsians	EastAfricans	0.00108	6.68E-04	0.105724
<i>SLC24A5</i>	rs1426654	G	A	EastAsians	EastAfricans	-3.49E-04	6.60E-04	0.597169
<i>MYO5A</i>	rs4776053	C	T	EastAsians	EastAfricans	4.53E-04	6.39E-04	0.478246
<i>MC1R</i>	rs2228479	G	A	EastAsians	EastAfricans	0.001758	8.26E-04	0.033387
<i>MC1R</i>	rs885479	G	A	EastAsians	EastAfricans	0.002282	8.26E-04	0.005752
<i>MFS12</i>	rs56203814	C	T	EastAsians	EastAfricans	-0.00251	8.31E-04	0.002534
<i>MFS12</i>	rs10424065	C	T	EastAsians	EastAfricans	-0.002891	6.99E-04	3.60E-05
<i>MFS12</i>	rs6510760	G	A	EastAsians	EastAfricans	-0.002354	6.49E-04	2.86E-04
<i>MFS12</i>	rs112332856	T	C	EastAsians	EastAfricans	-0.003299	6.60E-04	1.00E-06
<i>ASIP</i>	rs6119471	G	C	EastAsians	EastAfricans	0.002852	8.29E-04	5.79E-04
<i>ASIP</i>	rs6058017	G	A	EastAsians	EastAfricans	9.13E-04	6.27E-04	0.144925
<i>PIGU</i>	rs2378249	A	G	EastAsians	EastAfricans	4.46E-04	6.39E-04	0.485309
<i>SLC45A2</i>	rs16891982	C	G	EastAsians	WestAfricans	3.00E-04	5.36E-04	0.575049
<i>SLC45A2</i>	rs28777	C	A	EastAsians	WestAfricans	-9.20E-05	5.07E-04	0.85544

<i>SLC45A2</i>	rs26722	C	T	EastAsians	WestAfricans	7.93E-04	5.08E-04	0.118286
<i>EXOC2</i>	rs4959270	C	A	EastAsians	WestAfricans	1.93E-04	5.06E-04	0.703733
<i>TYRP1</i>	rs1408799	T	C	EastAsians	WestAfricans	-7.11E-04	5.09E-04	0.16208
<i>TYRP1</i>	rs683	A	C	EastAsians	WestAfricans	7.02E-04	5.11E-04	0.169651
<i>BNC2</i>	rs10756819	G	A	EastAsians	WestAfricans	8.70E-04	5.07E-04	0.086276
<i>BNC2</i>	rs12350739	G	A	EastAsians	WestAfricans	2.52E-04	5.48E-04	0.64552
<i>DDB1</i>	rs11230664	C	T	EastAsians	WestAfricans	0.001253	5.07E-04	0.013528
<i>DDB1</i>	rs7120594	T	C	EastAsians	WestAfricans	0.001126	5.07E-04	0.026524
<i>DDB1</i>	rs7948623	A	T	EastAsians	WestAfricans	-0.001541	5.31E-04	0.003738
<i>DDB1</i>	rs1377457	C	A	EastAsians	WestAfricans	0.001768	5.13E-04	5.67E-04
<i>TPCN2</i>	rs35264875	A	T	EastAsians	WestAfricans	5.30E-05	5.24E-04	0.919283
<i>TPCN2</i>	rs3829241	G	A	EastAsians	WestAfricans	6.80E-04	5.09E-04	0.182182
<i>TYR</i>	rs1042602	C	A	EastAsians	WestAfricans	-3.00E-04	5.65E-04	0.59469
<i>TYR</i>	rs1393350	G	A	EastAsians	WestAfricans	3.92E-04	6.82E-04	0.565332
<i>TYR</i>	rs1126809	G	A	EastAsians	WestAfricans	-4.55E-04	5.86E-04	0.437031
<i>KITLG</i>	rs642742	A	G	EastAsians	WestAfricans	0.001162	5.07E-04	0.021928
<i>KITLG</i>	rs12821256	T	C	EastAsians	WestAfricans	1.35E-04	7.08E-04	0.8484
<i>DCT</i>	rs1407995	T	C	EastAsians	WestAfricans	-7.21E-04	5.06E-04	0.154743
<i>DCT</i>	rs2031526	G	A	EastAsians	WestAfricans	0.001185	5.08E-04	0.019612
<i>SLC24A4</i>	rs12896399	G	T	EastAsians	WestAfricans	0.001601	5.41E-04	0.00308
<i>SLC24A4</i>	rs2402130	G	A	EastAsians	WestAfricans	9.65E-04	5.07E-04	0.057024
<i>OCA2</i>	rs2311843	C	T	EastAsians	WestAfricans	0.001485	5.10E-04	0.00356
<i>OCA2</i>	rs1800414	A	G	EastAsians	WestAfricans	0.002416	6.63E-04	2.69E-04
<i>OCA2</i>	rs1800404	C	T	EastAsians	WestAfricans	4.91E-04	5.07E-04	0.332155
<i>OCA2</i>	rs1800401	C	T	EastAsians	WestAfricans	-9.64E-04	5.13E-04	0.06006
<i>HERC2</i>	rs1129038	G	A	EastAsians	WestAfricans	-2.31E-04	5.43E-04	0.670853
<i>HERC2</i>	rs12913832	A	G	EastAsians	WestAfricans	-3.07E-04	5.48E-04	0.575425
<i>HERC2</i>	rs916977	A	G	EastAsians	WestAfricans	4.50E-04	5.07E-04	0.374526
<i>HERC2</i>	rs1667394	G	A	EastAsians	WestAfricans	4.92E-04	5.07E-04	0.332331

<i>SLC24A5</i>	rs1426654	G	A	EastAsians	WestAfricans	-4.32E-04	5.12E-04	0.398198
<i>MYO5A</i>	rs4776053	C	T	EastAsians	WestAfricans	2.68E-04	5.07E-04	0.597823
<i>MC1R</i>	rs2228479	G	A	EastAsians	WestAfricans	0.002028	6.63E-04	0.00222
<i>MC1R</i>	rs885479	G	A	EastAsians	WestAfricans	0.002441	6.63E-04	2.32E-04
<i>MFS12</i>	rs56203814	C	T	EastAsians	WestAfricans	-0.002104	6.63E-04	0.001509
<i>MFS12</i>	rs10424065	C	T	EastAsians	WestAfricans	-0.001928	5.63E-04	6.22E-04
<i>MFS12</i>	rs6510760	G	A	EastAsians	WestAfricans	-0.001474	5.07E-04	0.003679
<i>MFS12</i>	rs112332856	T	C	EastAsians	WestAfricans	-0.00206	5.16E-04	6.60E-05
<i>ASIP</i>	rs6119471	G	C	EastAsians	WestAfricans	0.002826	6.63E-04	2.00E-05
<i>ASIP</i>	rs6058017	G	A	EastAsians	WestAfricans	8.54E-04	5.07E-04	0.091702
<i>PIGU</i>	rs2378249	A	G	EastAsians	WestAfricans	2.00E-05	5.07E-04	0.967942
<i>SLC45A2</i>	rs16891982	C	G	EastAfricans	WestAfricans	3.88E-04	3.41E-04	0.255086
<i>SLC45A2</i>	rs28777	C	A	EastAfricans	WestAfricans	1.69E-04	1.81E-04	0.351565
<i>SLC45A2</i>	rs26722	C	T	EastAfricans	WestAfricans	8.40E-05	2.10E-04	0.689776
<i>EXOC2</i>	rs4959270	C	A	EastAfricans	WestAfricans	-4.43E-04	2.06E-04	0.03162
<i>TYRP1</i>	rs1408799	T	C	EastAfricans	WestAfricans	1.22E-04	1.82E-04	0.503424
<i>TYRP1</i>	rs683	A	C	EastAfricans	WestAfricans	-2.59E-04	1.85E-04	0.160278
<i>BNC2</i>	rs10756819	G	A	EastAfricans	WestAfricans	-3.59E-04	2.59E-04	0.165122
<i>BNC2</i>	rs12350739	G	A	EastAfricans	WestAfricans	1.55E-04	4.99E-04	0.756223
<i>DDB1</i>	rs11230664	C	T	EastAfricans	WestAfricans	-5.95E-04	2.06E-04	0.003833
<i>DDB1</i>	rs7120594	T	C	EastAfricans	WestAfricans	-3.15E-04	1.83E-04	0.084296
<i>DDB1</i>	rs7948623	A	T	EastAfricans	WestAfricans	5.57E-04	1.79E-04	0.001852
<i>DDB1</i>	rs1377457	C	A	EastAfricans	WestAfricans	-6.26E-04	2.11E-04	0.003034
<i>TPCN2</i>	rs35264875	A	T	EastAfricans	WestAfricans	0.001016	2.16E-04	3.00E-06
<i>TPCN2</i>	rs3829241	G	A	EastAfricans	WestAfricans	-6.90E-05	2.63E-04	0.792385
<i>TYR</i>	rs1042602	C	A	EastAfricans	WestAfricans	5.30E-05	4.89E-04	0.914067
<i>TYR</i>	rs1393350	G	A	EastAfricans	WestAfricans	6.43E-04	6.29E-04	0.306763
<i>TYR</i>	rs1126809	G	A	EastAfricans	WestAfricans	5.30E-05	4.89E-04	0.914067
<i>KITLG</i>	rs642742	A	G	EastAfricans	WestAfricans	1.53E-04	1.92E-04	0.423979

<i>KITLG</i>	rs12821256	T	C	EastAfricans	WestAfricans	0.001505	4.73E-04	0.001479
<i>DCT</i>	rs1407995	T	C	EastAfricans	WestAfricans	9.90E-05	1.85E-04	0.594727
<i>DCT</i>	rs2031526	G	A	EastAfricans	WestAfricans	-8.20E-05	2.21E-04	0.712095
<i>SLC24A4</i>	rs12896399	G	T	EastAfricans	WestAfricans	9.73E-04	2.81E-04	5.26E-04
<i>SLC24A4</i>	rs2402130	G	A	EastAfricans	WestAfricans	1.30E-04	1.78E-04	0.464636
<i>OCA2</i>	rs2311843	C	T	EastAfricans	WestAfricans	-2.14E-04	3.06E-04	0.483851
<i>OCA2</i>	rs1800414	A	G	EastAfricans	WestAfricans	6.43E-04	6.29E-04	0.306763
<i>OCA2</i>	rs1800404	C	T	EastAfricans	WestAfricans	-3.51E-04	2.24E-04	0.11748
<i>OCA2</i>	rs1800401	C	T	EastAfricans	WestAfricans	-4.59E-04	2.24E-04	0.040104
<i>HERC2</i>	rs1129038	G	A	EastAfricans	WestAfricans	-5.60E-05	4.81E-04	0.90728
<i>HERC2</i>	rs12913832	A	G	EastAfricans	WestAfricans	-5.60E-05	4.81E-04	0.90728
<i>HERC2</i>	rs916977	A	G	EastAfricans	WestAfricans	-4.02E-04	2.59E-04	0.120361
<i>HERC2</i>	rs1667394	G	A	EastAfricans	WestAfricans	-3.59E-04	2.59E-04	0.165122
<i>SLC24A5</i>	rs1426654	G	A	EastAfricans	WestAfricans	-1.57E-04	2.39E-04	0.509837
<i>MYO5A</i>	rs4776053	C	T	EastAfricans	WestAfricans	-8.90E-05	2.08E-04	0.66729
<i>MC1R</i>	rs2228479	G	A	EastAfricans	WestAfricans	6.43E-04	6.29E-04	0.306763
<i>MC1R</i>	rs885479	G	A	EastAfricans	WestAfricans	6.43E-04	6.29E-04	0.306763
<i>MFS12</i>	rs56203814	C	T	EastAfricans	WestAfricans	-1.27E-04	1.86E-04	0.494038
<i>MFS12</i>	rs10424065	C	T	EastAfricans	WestAfricans	3.51E-04	1.78E-04	0.048901
<i>MFS12</i>	rs6510760	G	A	EastAfricans	WestAfricans	3.81E-04	2.24E-04	0.089162
<i>MFS12</i>	rs112332856	T	C	EastAfricans	WestAfricans	5.39E-04	2.23E-04	0.015703
<i>ASIP</i>	rs6119471	G	C	EastAfricans	WestAfricans	5.78E-04	1.79E-04	0.001269
<i>ASIP</i>	rs6058017	G	A	EastAfricans	WestAfricans	1.35E-04	1.82E-04	0.458646
<i>PIGU</i>	rs2378249	A	G	EastAfricans	WestAfricans	-3.31E-04	2.07E-04	0.109172