

**FIGURE S1.** Blood glucose, total protein, albumin, IgG and IgM levels of piglets.

The data are presented as the mean  $\pm$  S.D. n=6. CMT, colonic microbiota transplantation; FMT, fecal microbiota transplantation.

**FIGURE S2.** Quantification of the intensity of the protein blots in Figure 2. CMT, colonic microbiota transplantation; FMT, fecal microbiota transplantation. The data are presented as the mean  $\pm$  S.D. n=6. \*\*\* indicates  $P<0.001$ ; \*\* indicates  $P<0.01$ , and \* indicates  $P<0.05$  compared with the control; ### indicates  $P<0.001$ , ## indicates  $P<0.01$ , and # indicates  $P<0.05$  between the FMT and CMT groups.

**FIGURE S3.** Enzyme activities of cellulose,  $\alpha$  glucosinase, and trypsinase in the colon of piglets. The data are presented as the mean  $\pm$  S.D. n=6. No significant differences on the enzymes between the piglets. CMT, colonic microbiota transplantation; FMT, fecal microbiota transplantation.

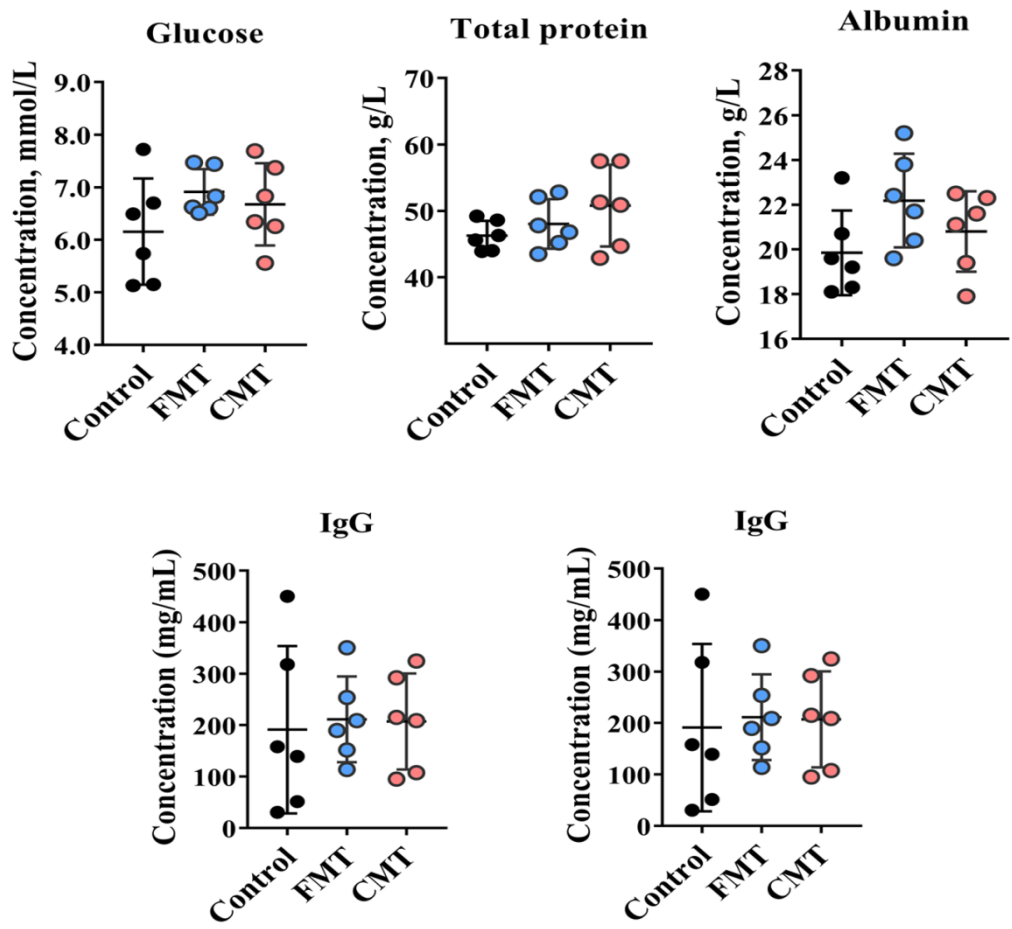
**FIGURE S4.** Dynamic changes in dominant bacteria in the different piglets by the sankey analysis. CMT, colonic microbiota transplantation; FMT, fecal microbiota transplantation.

**FIGURE S5.** Linear discriminant analysis (LDA) effect size (LEfSe) of microbiota in different pigs. LDA score  $> 4.0$ . CMT, colonic microbiota transplantation; FMT, fecal microbiota transplantation.

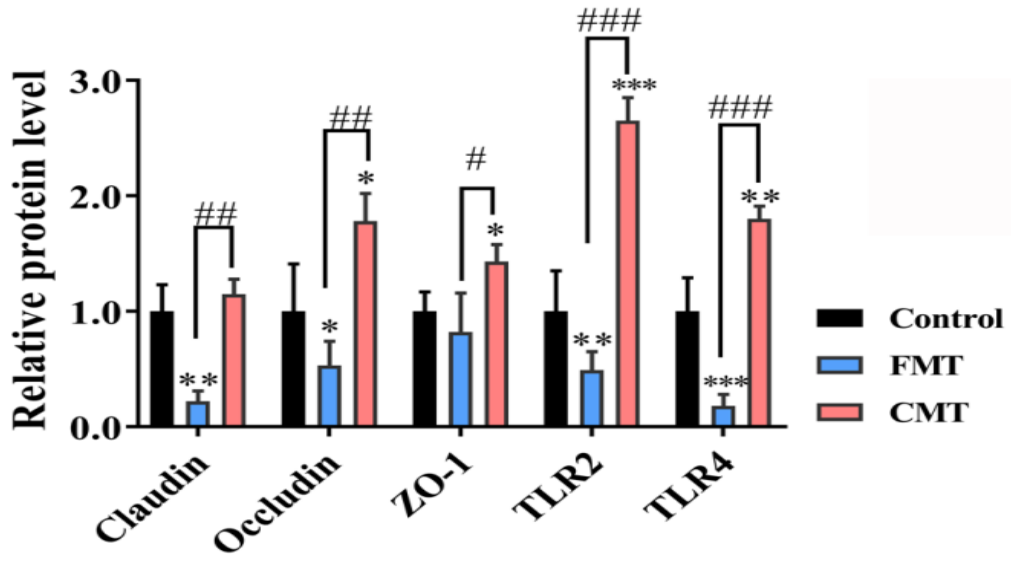
**FIGURE S6.** Heatmap indicating the differences in the *Prevotellaceae* family and related genera in different piglets. Red indicates high abundance, and blue indicates low abundance. CMT, colonic microbiota transplantation; FMT, fecal microbiota transplantation.

**FIGURE S7.** Compound classification of the differentially expressed metabolites by the HMDB database screening. A. Superclass level; B. Subclass level. CMT, colonic microbiota transplantation; FMT, fecal microbiota transplantation.

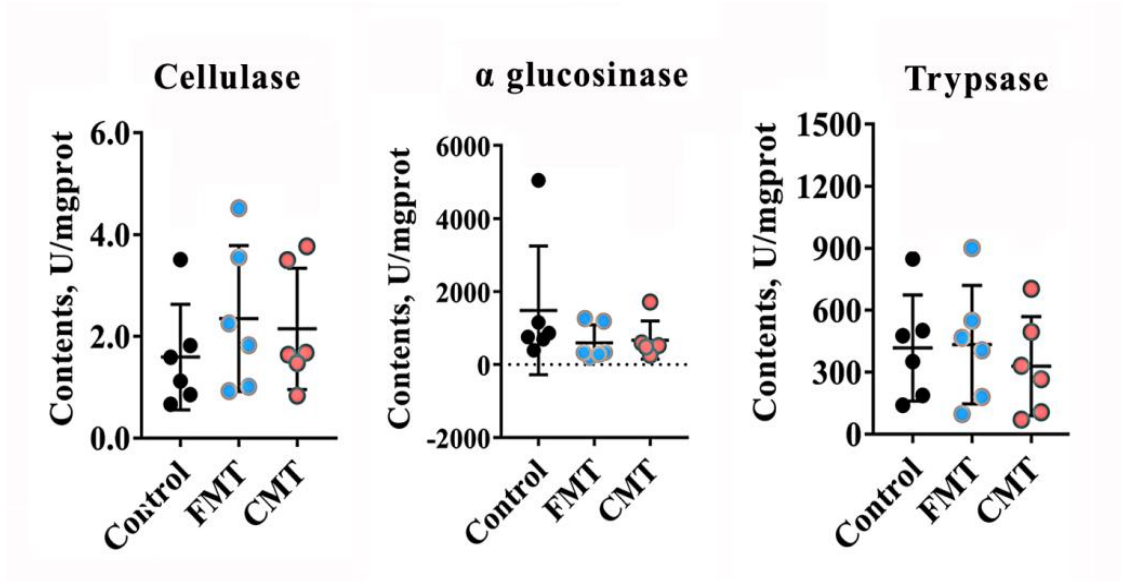
**FIGURE S8.** Differentially expressed amino acids and its metabolites. A. Heatmap indicating the differences in amino acids metabolites; B. The differences in indole derivatives in the three groups of pigs. CMT, colonic microbiota transplantation; FMT, fecal microbiota transplantation. The data are presented as the mean  $\pm$  S.E. n=6.



S Fig.1

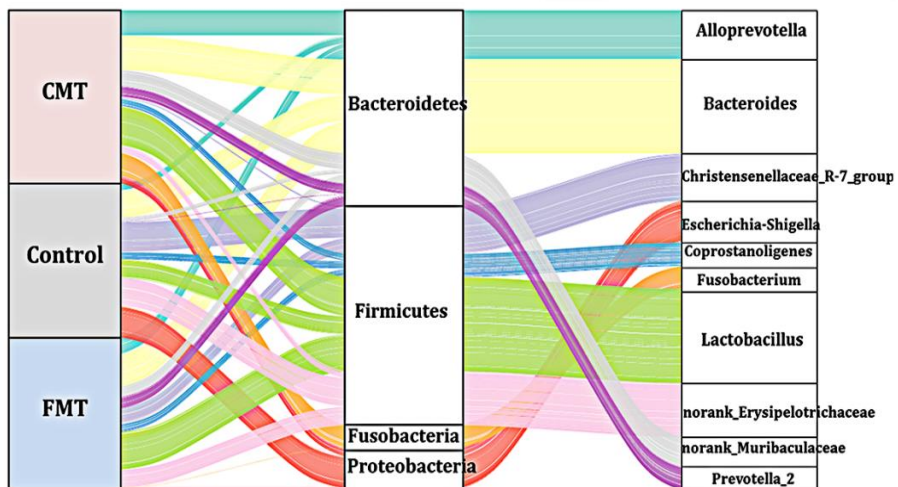


S Fig.2



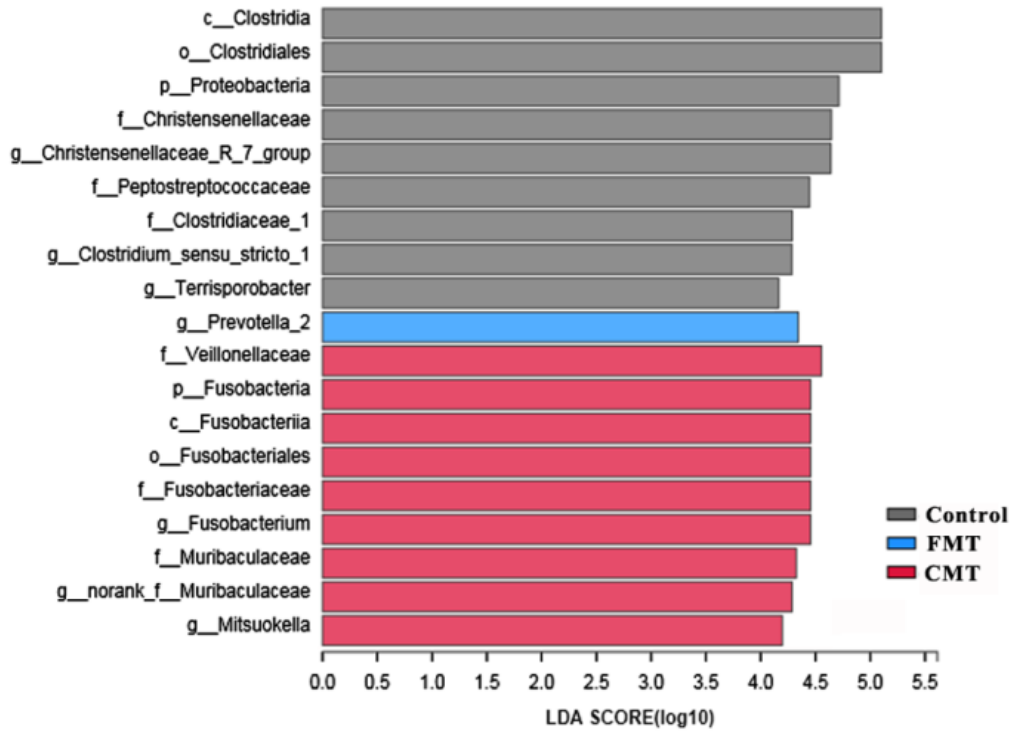
S Fig.3

### Sankey Diagram

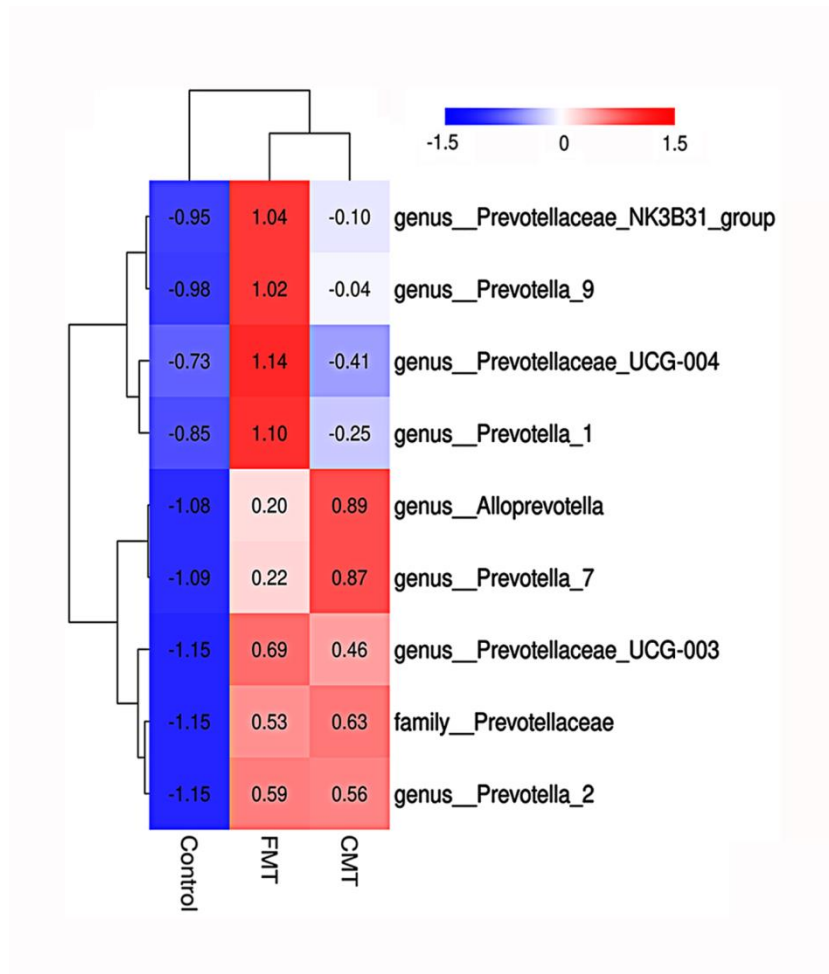


S Fig.4

## LefSe Bar



S Fig.5

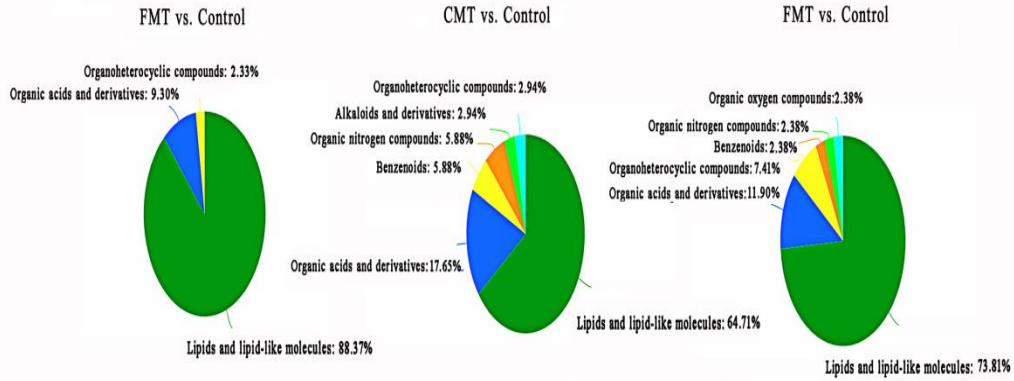


**S Fig.6**



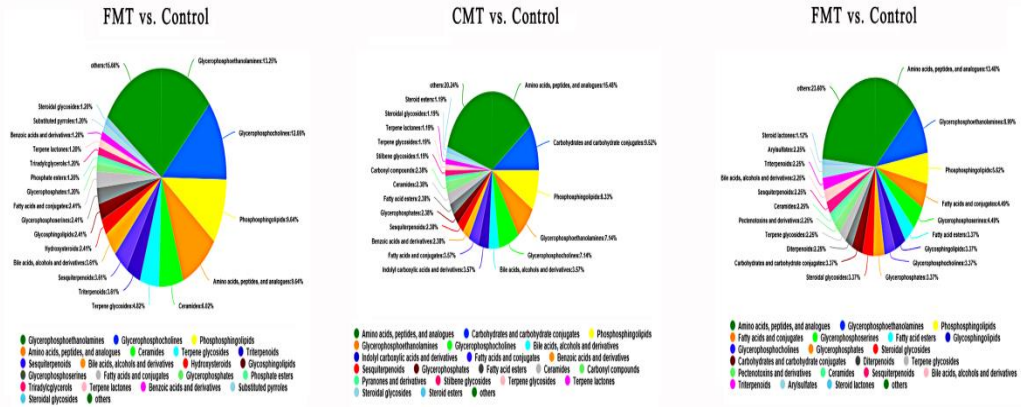
**A**

**HMDB compounds (Superclass)**

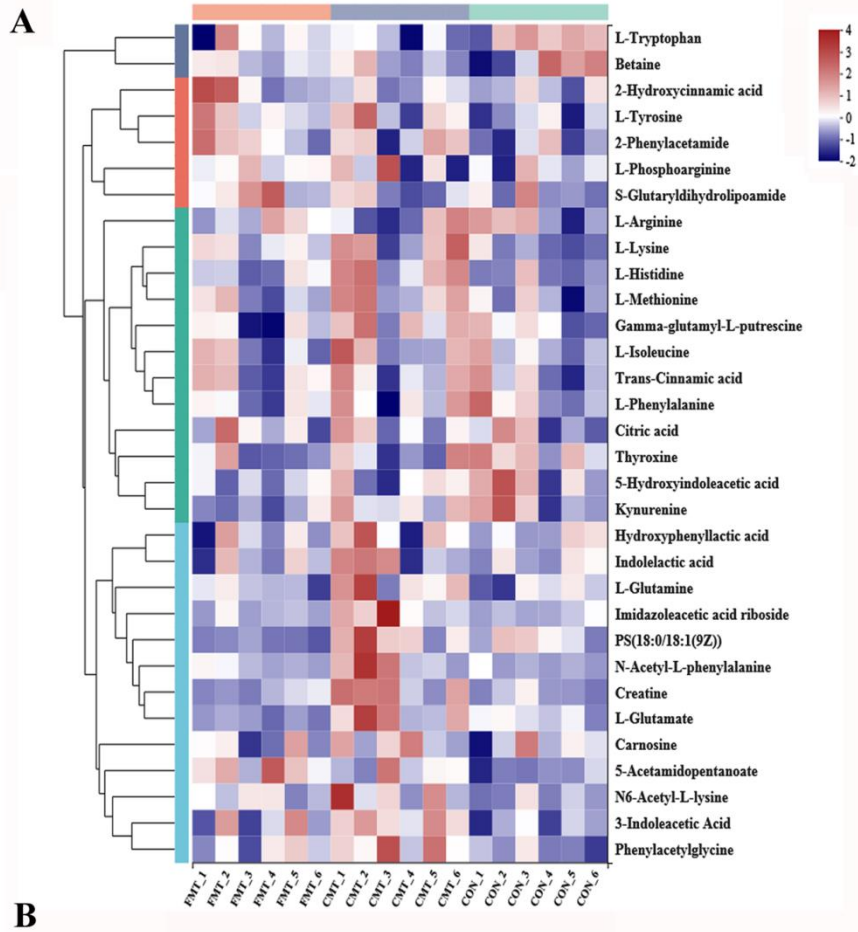


**B**

**HMDB compound (Subclass)**



**S Fig.7**



S Fig.8