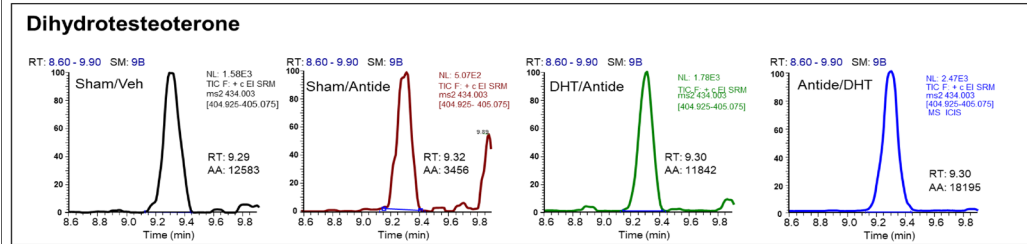
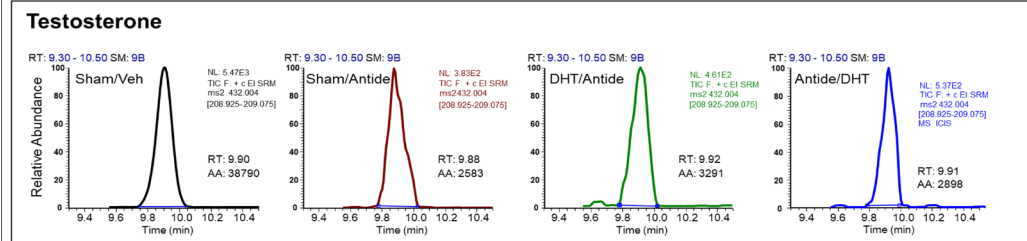
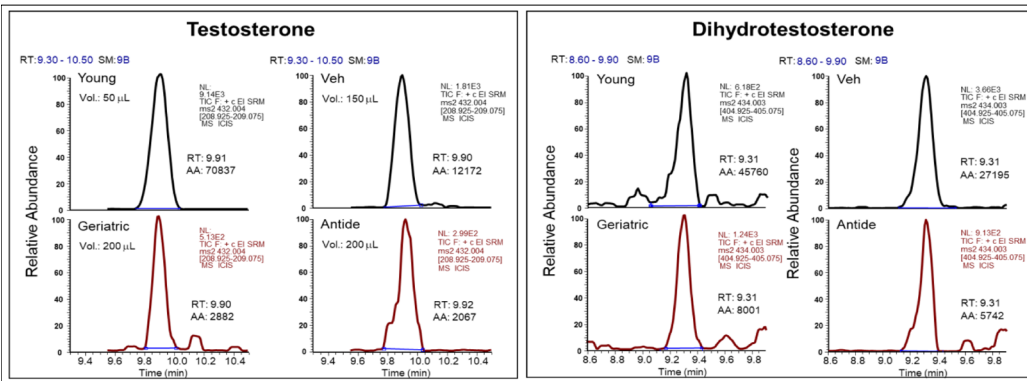


Table 2. Representative mass-spectrometric chromatogram and result of steroid profiling for blood samples.



	DHT	A-dione	T	E2	5β-DHP	P-one	Allo-P-one	Preg	Iso-P-one	5α-DHP	Prog	20α-DHP	7α-OH-Pr	THDOC	allo-THDOC	E	B	F	7α-OH-CH	7β-OH-CH	Desmosterol	Lathosterol	Lanosterol	24S-OH-C	Cholesterol	
Veh	3.40	0.16	0.90	0.02		0.80	0.22	0.29	0.66	0.97	0.21	0.10	1.90	0.28	88.66	0.11	28.11	9.57	15.22	9.85	21.83	13.84	302.45			
Ant	0.25	0.05	0.30	0.01		2.26	0.25	0.22	1.65	2.08	0.31	0.16	2.77	0.18	227.30	0.36	12.97	7.30	7.40	5.82	12.36	9.54	237.84			
Ant	0.83	0.13	0.31	0.02		1.25	0.11	0.21	1.26	1.29	0.23	0.14	1.60	0.14	154.69	0.26	2.59	4.20	5.37	4.32	9.42	2.98	145.12			
Ant	2.12	0.05	0.40	0.02		1.01	0.21	0.18	1.59	1.92	0.25	0.20	1.44	0.15	191.71	0.28	6.55	3.25	6.70	5.00	9.06	8.15	173.52			

Ge	1.06	0.29	0.75	0.05		0.66	1.10	0.27	0.10	0.25	0.46	0.35	0.15	1.44	1.24	0.59	55.36	0.12	34.58	10.53	66.34	13.73	41.00	11.90	191.82	
Yo	5.28	0.48	9.87	0.04		1.77	0.29	0.10	1.88	0.41	0.10	0.22	0.65	0.29	6.48	0.03	24.17	13.41	25.99	12.07	31.94	2.53	164.62			
Ge	1.04	0.05	0.35	0.04		0.33	0.57	0.30	0.10	0.10	0.33	0.15	0.13	1.69	0.94	0.14	53.52	0.15	14.77	7.01	29.33	6.02	10.48	9.96	278.22	

Veh	1.22	0.15	1.82	0.03		1.01	0.15	0.18	1.12	1.62	0.39	0.09	1.57	0.17	162.10	0.22	6.39	4.59	5.02	4.21	7.73	6.85	149.96			
Ant	0.50	0.05	0.34	0.03		0.95	0.19	0.10	1.22	2.43	0.82	0.13	0.82	0.09	214.05	0.22	48.64	16.72	14.84	11.25	21.52	11.53	616.02			
Ant	0.30	0.05	0.37	0.01		1.65	0.12	0.20	1.80	1.22	0.22	0.10	1.85	0.34	146.98	0.29	9.14	6.41	6.23	4.59	11.13	4.60	190.77			
Ant	1.13	0.11	0.33	0.01		1.25	0.27	0.22	1.99	2.94	0.38	0.17	1.54	0.29	212.84	0.38	5.92	3.49	5.94	3.70	7.78	6.27	172.88			

	Preg*100	Chol/Des	Chol/Lath	Chol/Lan	Lath/Lan	Desmo/La	7αOHCh	7βOHCh	24SOHCh	E/F	F/E	Prog/Prog	Iso-P-one/allo-P-one	20α-DHP/5α-DHP	DHT/T	E2/T	A-dione/P	T/A-dione	allo-P-one/Prog	P-one/Prog	allo-THDOC	THDOC/H	B/Prog
Veh	0.741	19.875	30.711	13.854	0.451	0.697	92.951	31.626	45.770	2.474	0.404	4.328	0.438	1.219	0.219	0.681	3.776	0.027	0.160	5.790	0.830	1.958	91.424
Ant	1.045	32.136	40.844	19.237	0.471	0.599	54.549	30.692	40.112	0.506	1.978	8.386	0.136	1.365	0.147	0.794	0.838	0.042	0.024	6.000	1.083	1.329	109.092
Ant	0.761	27.047	33.579	15.410	0.459	0.570	17.860	28.913	20.562	0.530	1.887	11.715	0.169	0.992	0.178	0.976	2.670	0.078	0.100	2.401	0.968	1.237	119.632
Ant	1.236	25.904	34.709	19.145	0.552	0.739	37.744	18.750	46.988	0.517	1.936	8.941	0.112	0.632	0.131	0.829	5.330	0.040	0.026	7.947	0.524	0.753	99.946

Ge	1.389	2.891	13.974	4.679	0.335	1.618	180.249	54.873	62.052	4.991	0.200	1.735	0.402	4.424	0.760	0.537	1.412	0.066	0.622	2.609	2.377	1.433	2.672	3.110	119.688
Yo	1.745	6.334	13.636	5.153	0.378	0.814	146.840	81.448	15.361	10.455	0.096	1.431	0.053	0.942	0.243	4.581	0.535	0.004	1.165	20.604	4.317	1.586	15.782		
Ge	1.075	9.485	46.201	26.544	0.575	2.799	53.104	25.195	35.813	0.918	1.090	1.092	1.000	5.662	0.473	0.306	2.958	0.100	0.153	7.013	1.735	0.998	2.867	5.172	163.953

Veh	0.983	29.863	35.597	19.408	0.545	0.650	42.627	30.610	45.665	0.763	1.310	11.007	0.159	0.906	0.243	0.690	0.671	0.016	0.092	12.217	0.625	0.967	0.967	99.898
Ant	0.313	41.498	54.742	28.621	0.523	0.690	78.964	27.150	18.718	1.345	0.744	12.600	0.082	0.780	0.337	0.502	1.464	0.081	0.021	6.821	0.392	1.680	0.339	87.976
Ant	0.639	30.612	41.509	17.131	0.413	0.560	47.937	33.603	24.097	1.167	0.857	9.970	0.111	0.915	0.180	1.484	0.813	0.027	0.041	7.413	1.358	1.520	120.954	
Ant	1.585	29.083	46.753	22.222	0.475	0.764	34.224	20.164	36.285	0.772	1.296	10.736	0.112	0.628	0.129	0.677	3.452	0.031	0.038	2.927	0.425	0.522	0.522	72.356