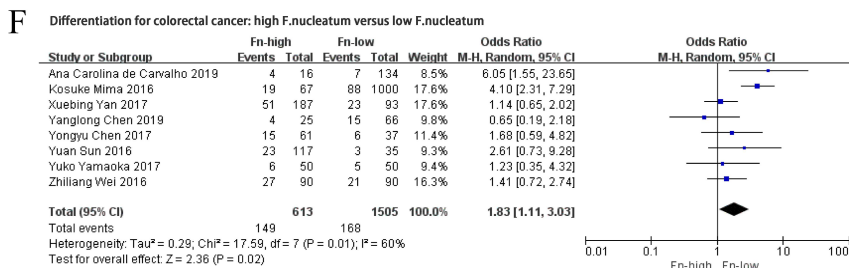
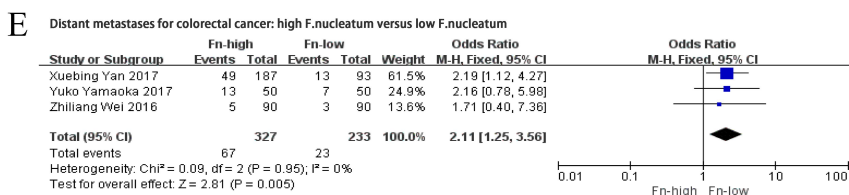
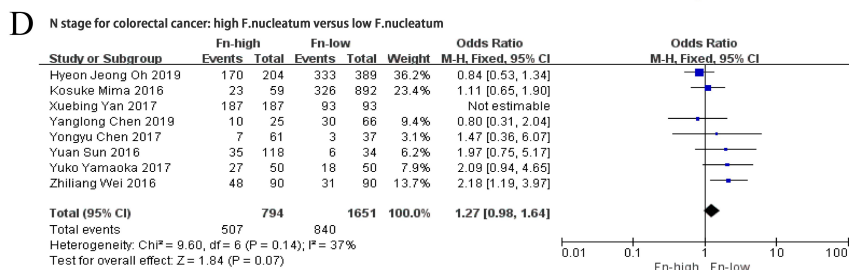
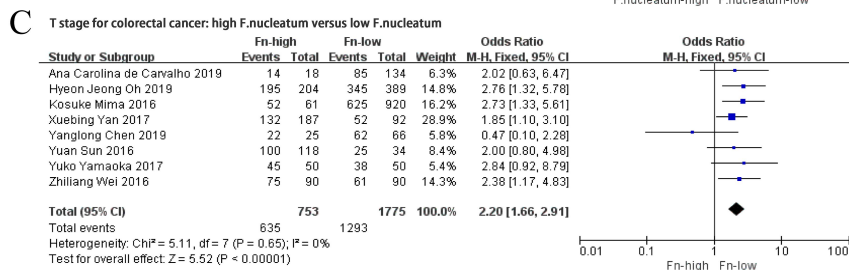
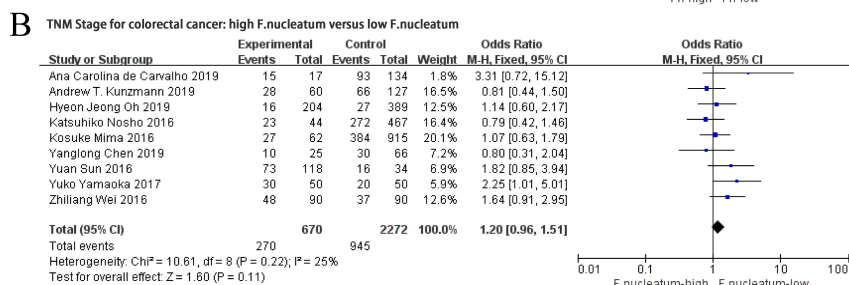
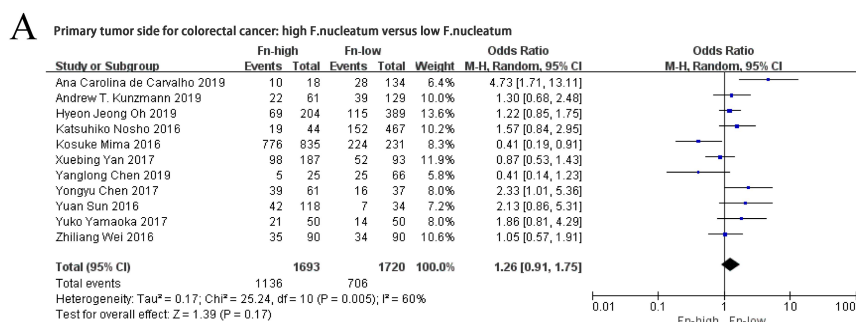
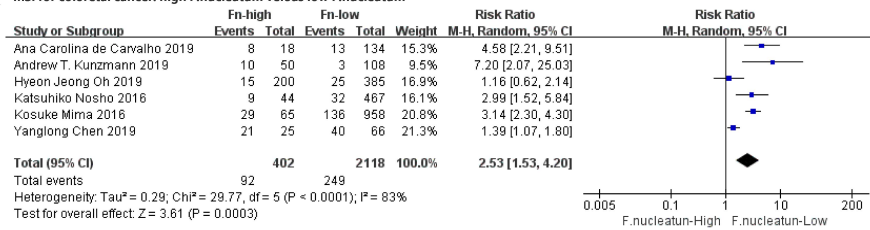


## Supplementary Material:

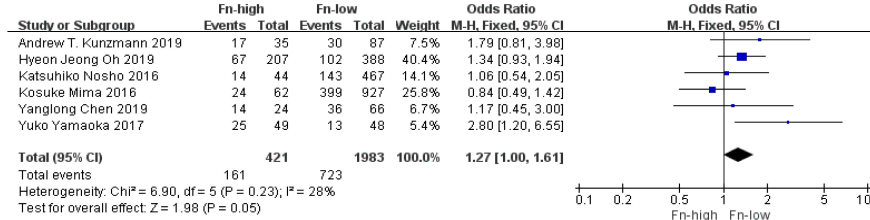


S1. Forest plot of association between F.nucleatum level with clinicopathological characteristics: a. primary tumor site b. TNM Stage c. T stage d. N stage e. distant metastases f. differentiation

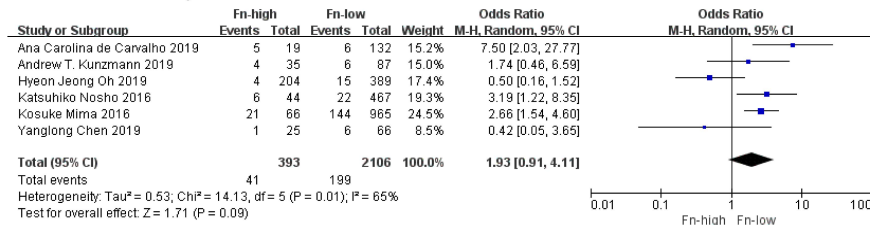
**A** MSI for colorectal cancer: high F.nucleatum versus low F.nucleatum



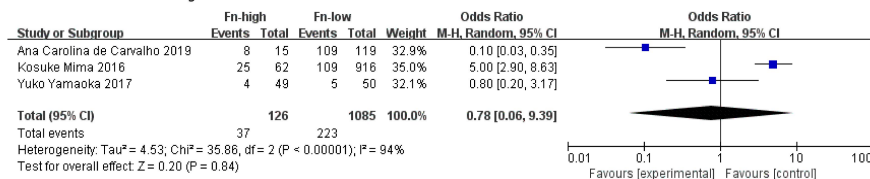
**B** KRAS for colorectal cancer: high F.nucleatum versus low F.nucleum



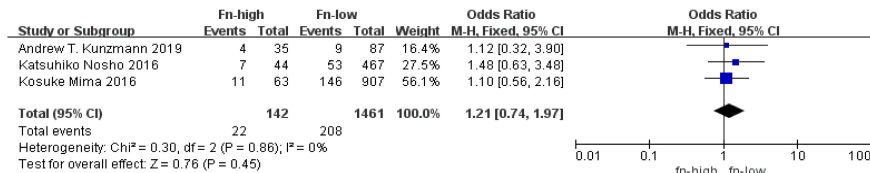
**C** BRAF for colorectal cancer: high F.nucleatum versus low F.nucleum



**D** MLH1 for colorectal cancer: high F.nucleatum versus low F.nucleum



**E** MLH1 for colorectal cancer: high F.nucleatum versus low F.nucleum



S2. Forest plot of association between F.nucleatum level with molecular characteristics:  
a. MSI b. KRAS c. BRAF e. MLH1 f. PIK2CA