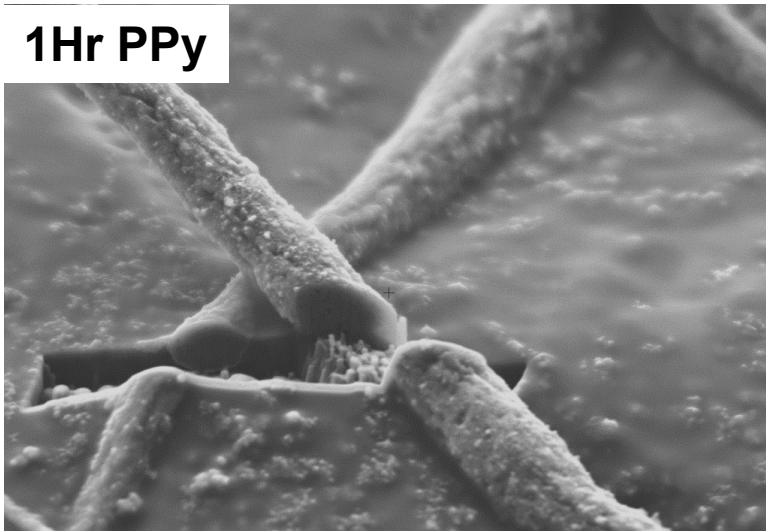


1Hr PPy



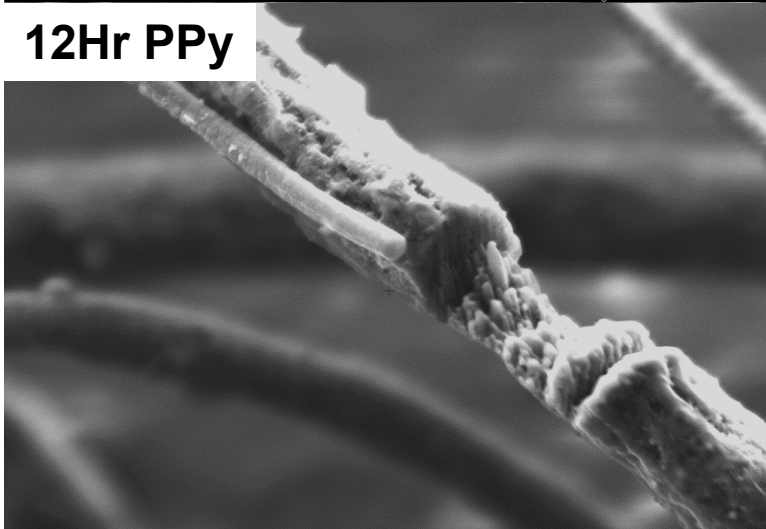
2 μm Mag = 6.57 K X EHT = 5.00 kV Signal A = SE2 FIB Probe = 30kV 50pA ref FIB Imaging = SEM FIB Lock Mags = Yes UTSA

6Hr PPy



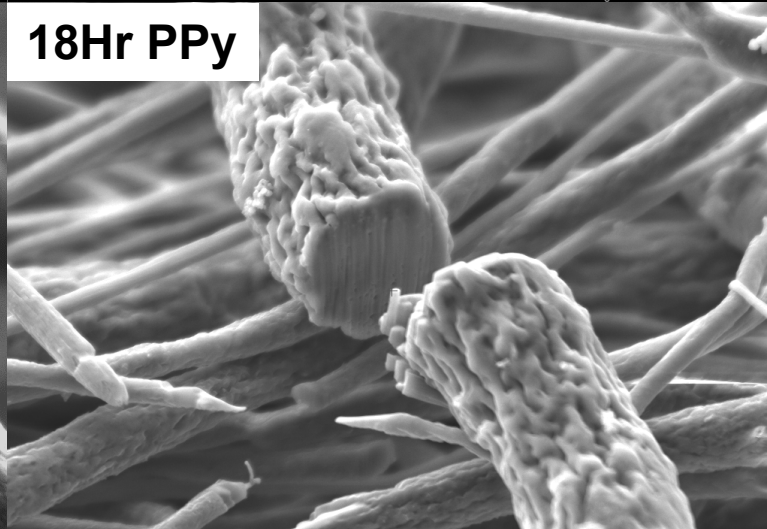
2 μm Mag = 6.78 K X EHT = 5.00 kV Signal A = SE2 FIB Probe = 30kV 50pA ref FIB Imaging = SEM FIB Lock Mags = Yes UTSA

12Hr PPy



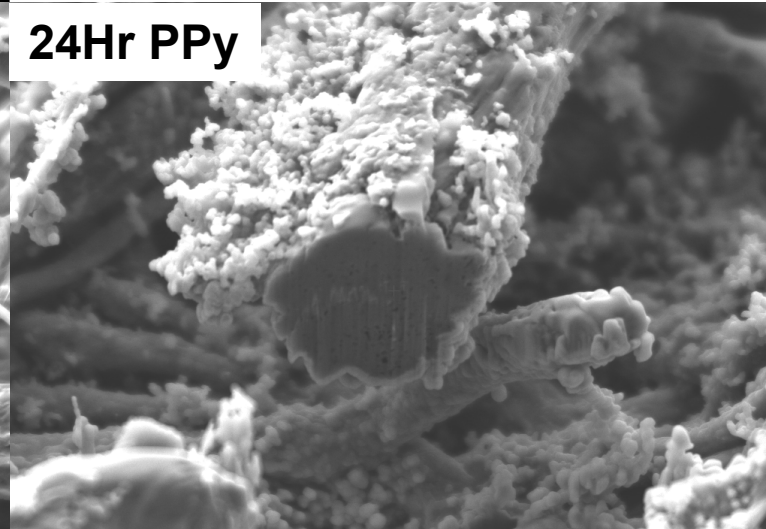
2 μm Mag = 6.92 K X EHT = 5.00 kV Signal A = SE2 FIB Probe = 30kV 50pA ref FIB Imaging = SEM FIB Lock Mags = Yes UTSA

18Hr PPy



1 μm Mag = 5.83 K X EHT = 5.00 kV Signal A = SE2 FIB Probe = 30kV 50pA ref FIB Imaging = SEM FIB Lock Mags = Yes UTSA

24Hr PPy



2 μm Mag = 6.38 K X EHT = 5.00 kV Signal A = SE2 FIB Probe = 30kV 50pA ref FIB Imaging = SEM FIB Lock Mags = Yes UTSA