

## Supplementary Information for

### **Title: Emergence of *fosA3* and *bla*<sub>CTX-M-14</sub> in multidrug-resistant *Citrobacter freundii* isolates from flowers and their surrounding environments in China**

**Ke Cheng<sup>1†</sup>, Liang-Xing Fang<sup>1,3†</sup>, Bing He<sup>1</sup>, Qian-wen Ge<sup>1</sup>, Jia-qi Lu<sup>1</sup>, Zi-xing Zhong<sup>1</sup>, Xi-ran Wang<sup>1</sup>, Yang Yu<sup>1,3</sup>, Xin-lei Lian<sup>1,3</sup>, Xiao-Ping Liao<sup>1,2,3</sup>, Jian Sun<sup>1,2,3\*</sup>, Ya-Hong Liu<sup>1,2,3,4\*</sup>**

<sup>1</sup>National Risk Assessment Laboratory for Antimicrobial Resistance of Animal Original Bacteria, South China Agricultural University, Guangzhou 510642, China

<sup>2</sup>Guangdong Laboratory for Lingnan Modern Agriculture, Guangzhou 510642, China

<sup>3</sup>Guangdong Provincial Key Laboratory of Veterinary Pharmaceutics Development and Safety Evaluation, South China Agricultural University, Guangzhou 510642, China

<sup>4</sup>Jiangsu Co-Innovation Center for the Prevention and Control of Important Animal Infectious Disease and Zoonosis, Yangzhou University, Yangzhou 225009, PR China

<sup>†</sup>Both authors contributed equally to this work

\*Corresponding Author

Jian Sun, PhD, Laboratory of Veterinary Pharmacology, College of Veterinary Medicine, South China Agricultural University, Guangzhou 510642, PR. China. E-mail: [jiansun@scau.edu.cn](mailto:jiansun@scau.edu.cn). Tel: +86-020-85285507; Fax: +86-020-85285507

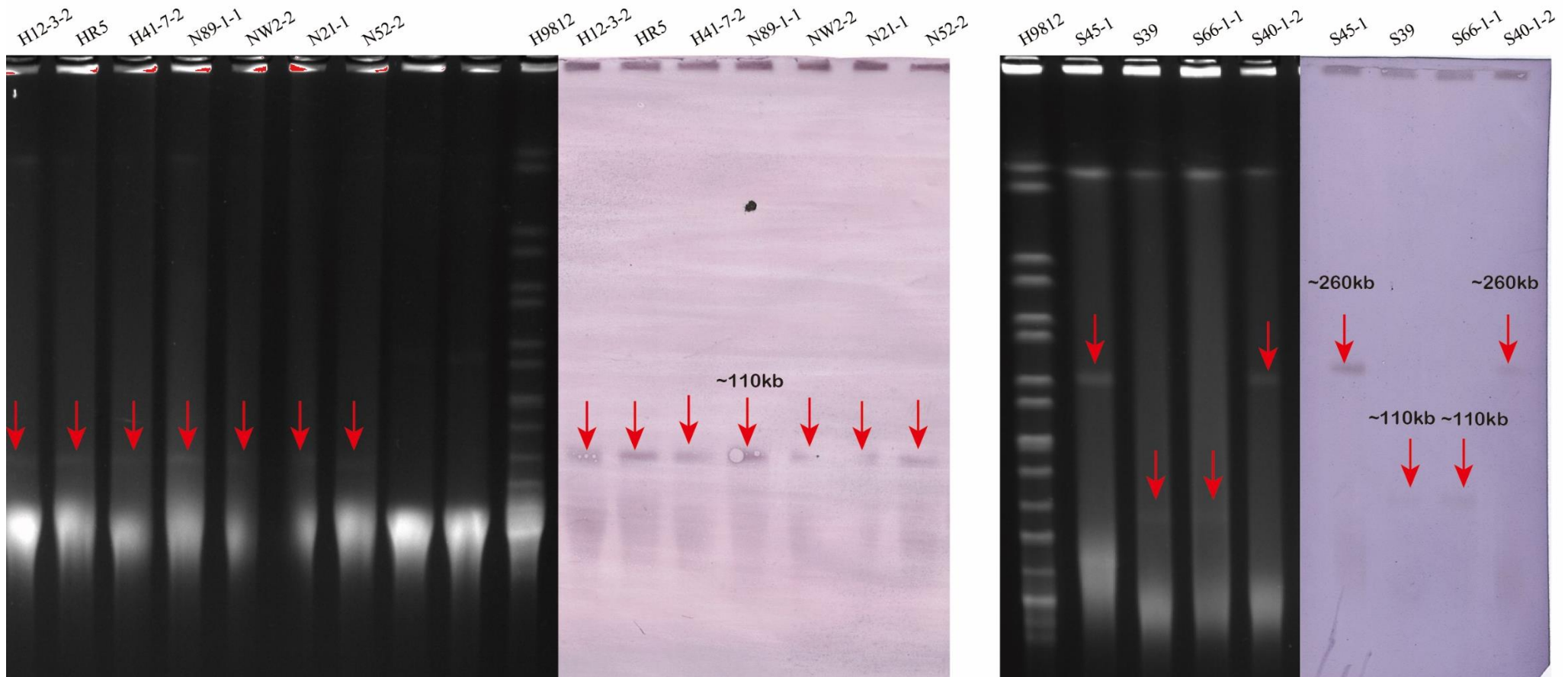
Ya-Hong Liu, PhD, Laboratory of Veterinary Pharmacology, College of Veterinary Medicine, South China Agricultural University, Guangzhou 510642, PR. China. E-mail: [lyh@scau.edu.cn](mailto:lyh@scau.edu.cn). Tel: +86-20-85280006; Fax: +86-20-85280006

**Table S1. Antimicrobial susceptibility testing among 11 *fosA3*-positive *Citrobacter freundii* isolates and their corresponding transconjugants (MICs, µg/mL).**

	FOS	CTX	AMC	MEM	TIG	TET	CTET	DOX	CIP	GEN	AMK	SXT	FFC	CHL	RIF	CS
H12-3-2	>512	128	64	0.016	1	128	128	32	32	128	>256	320	256	128	256	1
<u>H12-3-2</u>	>512	64	4	0.016	0.25	2	2	1	0.016	1	1	2.5	2	2	4	0.25
H41-7-2	>512	128	64	0.016	1	128	64	32	32	128	>256	320	256	128	256	1
<u>H47-1-2</u>	>512	64	4	0.016	0.25	2	2	1	0.016	1	1	2.5	2	2	4	0.25
<u>HR5</u>	>512	128	64	0.016	1	128	128	32	32	128	>256	320	256	128	256	1
<u>HR5</u>	>512	64	4	0.016	0.25	2	2	1	0.016	1	1	2.5	2	2	4	0.25
N21-1	>512	128	64	0.016	1	128	128	32	32	128	>256	320	256	128	256	1
<u>N21-1</u>	>512	64	4	0.016	0.25	2	2	1	0.016	1	1	2.5	2	2	4	0.25
N52-2	>512	128	64	0.016	1	128	128	32	32	128	>256	320	256	128	256	1
<u>N52-2</u>	>512	64	4	0.016	0.25	2	2	1	0.016	1	1	2.5	2	2	4	0.25
N89-1-1	>512	128	64	0.016	1	256	128	32	32	128	>256	320	256	128	256	1
<u>N89-1-1</u>	>512	64	4	0.016	0.25	2	2	1	0.016	1	1	2.5	2	2	4	0.25
NW2-2	>512	128	64	0.016	1	128	128	32	32	128	>256	320	256	128	256	1
<u>NW2-2</u>	>512	64	4	0.016	0.25	2	2	1	0.016	1	1	2.5	2	2	4	0.25
S66-1-1	>512	128	64	0.016	1	128	128	32	32	128	>256	320	256	128	256	1
<u>S66-1-1</u>	>512	32	4	0.016	0.25	2	2	1	0.016	1	1	2.5	2	2	4	0.25
S40-1-2	>512	128	64	0.016	1	128	128	32	32	128	>256	320	256	128	256	1
<u>S40-1-2</u>	>512	64	4	0.016	0.25	2	2	1	0.016	1	1	2.5	2	2	4	0.25
<u>S39</u>	>512	128	32	0.03	1	256	128	32	16	128	1	320	256	256	>256	1
<u>S39</u>	>512	64	4	0.016	0.25	64	128	16	0.5	128	1	320	2	64	64	0.25
S45-1	>512	128	32	0.03	1	256	128	32	16	128	1	320	256	256	>256	1
<u>S45-1</u>	>512	64	4	0.016	0.25	64	128	16	0.5	64	1	320	2	64	64	0.25
C600	4	0.03	4	0.016	0.25	1	2	1	0.016	2	1	5	1	2	2	0.25
25922	2	0.03	4	0.016	0.25	2	2	1	0.016	1	1	2.5	2	2	2	0.25

<sup>1</sup> FOS, fosfomycin; FFC, florfenicol; CTX, cefotaxime; AMC, amoxicillin-clavulanate; MEM, meropenem; TIG, tigecycline; TET, tetracycline; CTET, chlortetracycline; DOX, doxycycline; CIP, ciprofloxacin; GEN, gentamicin; AMK, amikacin; SXT, sulfamethoxazole/trimethoprim; CHL, chloramphenicol; RIF, rifampicin

<sup>2</sup> Transconjugants that were co-transferred by conjugation are underlined.



**Figure S1.** S1-PFGE and Southern blots hybridization profiles of *fosA3*-carrying plasmids in the 11 transformants.