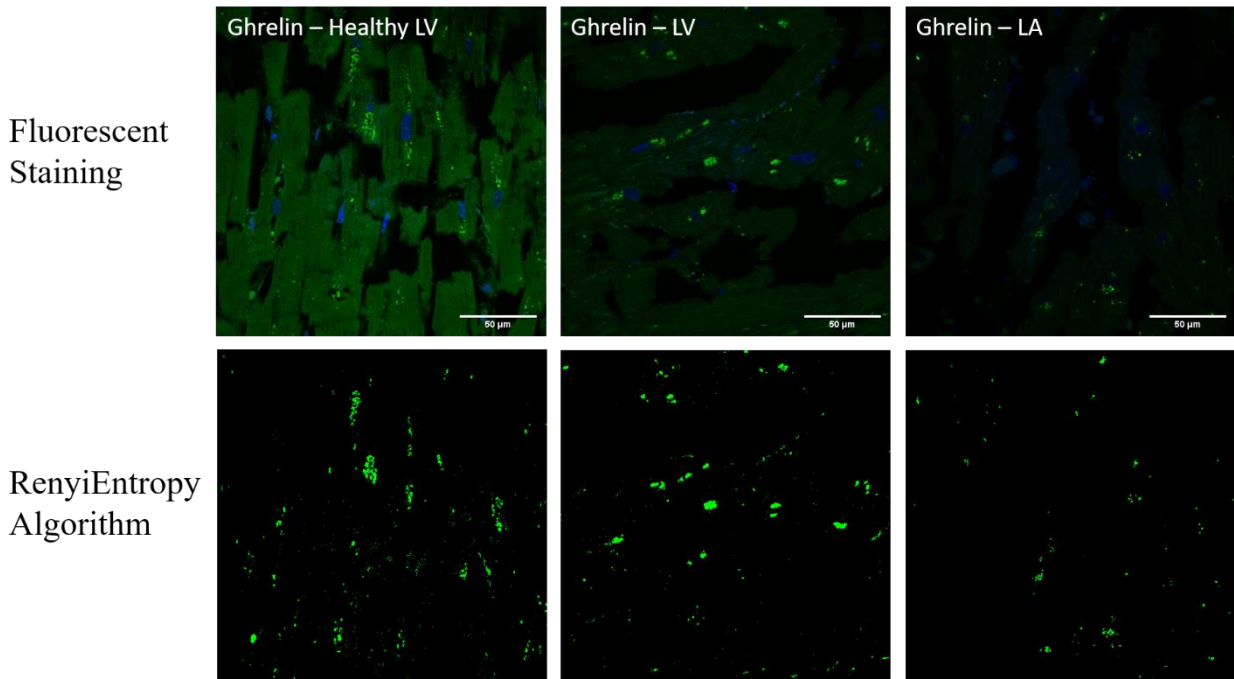
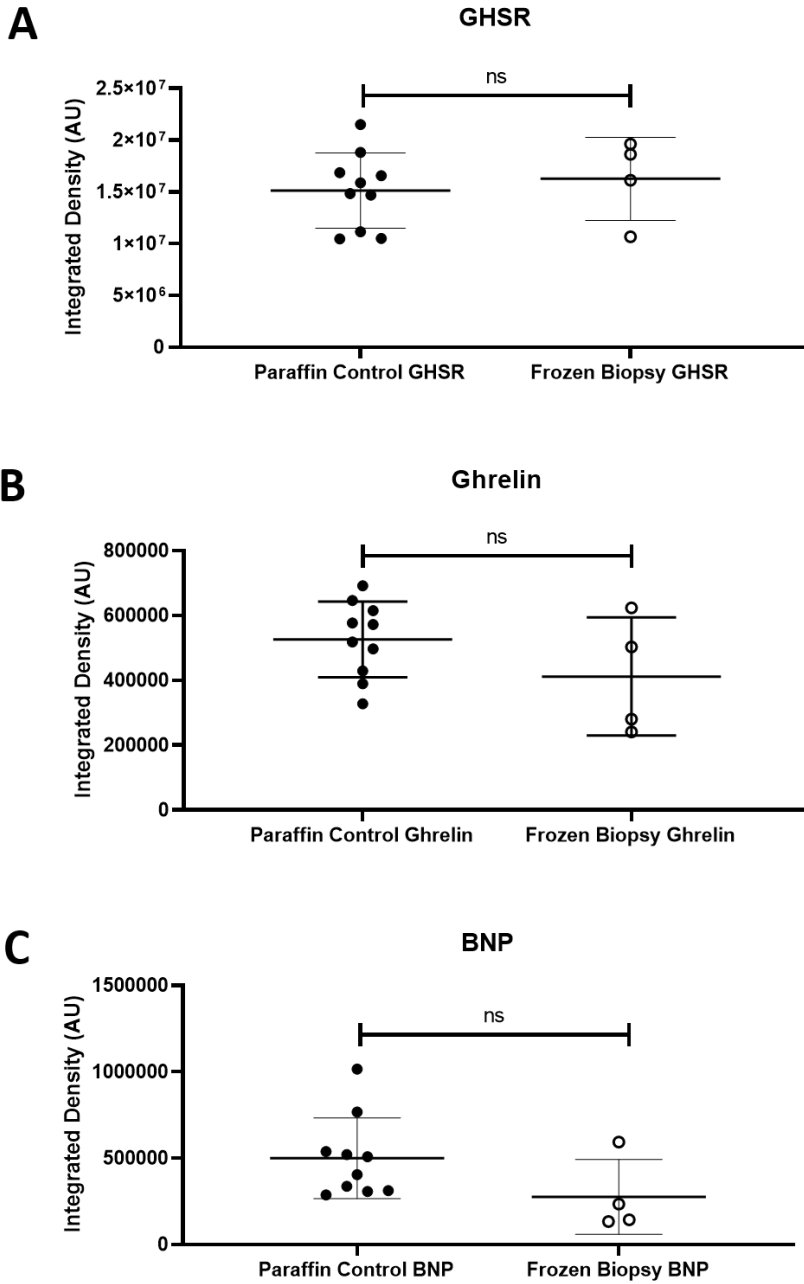


Supplemental Figure S1.



Supplemental Figure S1. Punctate staining with RenyiEntropy algorithm. Top panel shows representative fluorescent staining of healthy, diseased left atrium (LA) and diseased left ventricle (LV) tissue. Bottom panels show what the RenyiEntropy algorithm considers positive staining (green) and what is background staining (black) for all types of tissues.

Supplemental Figure S2.



Supplemental Figure S2. Comparison between paraffin embedded control human tissue and frozen healthy heart biopsy samples. Marker comparison between GHSR (A), Ghrelin (B), and BNP (C) indicated no significant difference in quantification between methods of tissue storage.