

Activation of WNT7b Autocrine Eases Metastasis of Colorectal Cancer via Epithelial to Mesenchymal Transition and Predicts Poor Prognosis

Additional data

Blot images interpretation

Shuai Jiang; Qiwen Li; Yimin Liu; Huimin Zhang; Qianyu Wang; Yu Chen; Xiaoyang Shi; Jun Li; Hailing Zhang; Yi Zhang; Dongqing Xia; Man Wu; Jiajia Lin; Chenglin Zhang; Suhua Pang; Jiamin Jiang; YAN WEN, M.D.; Peipei Zhang

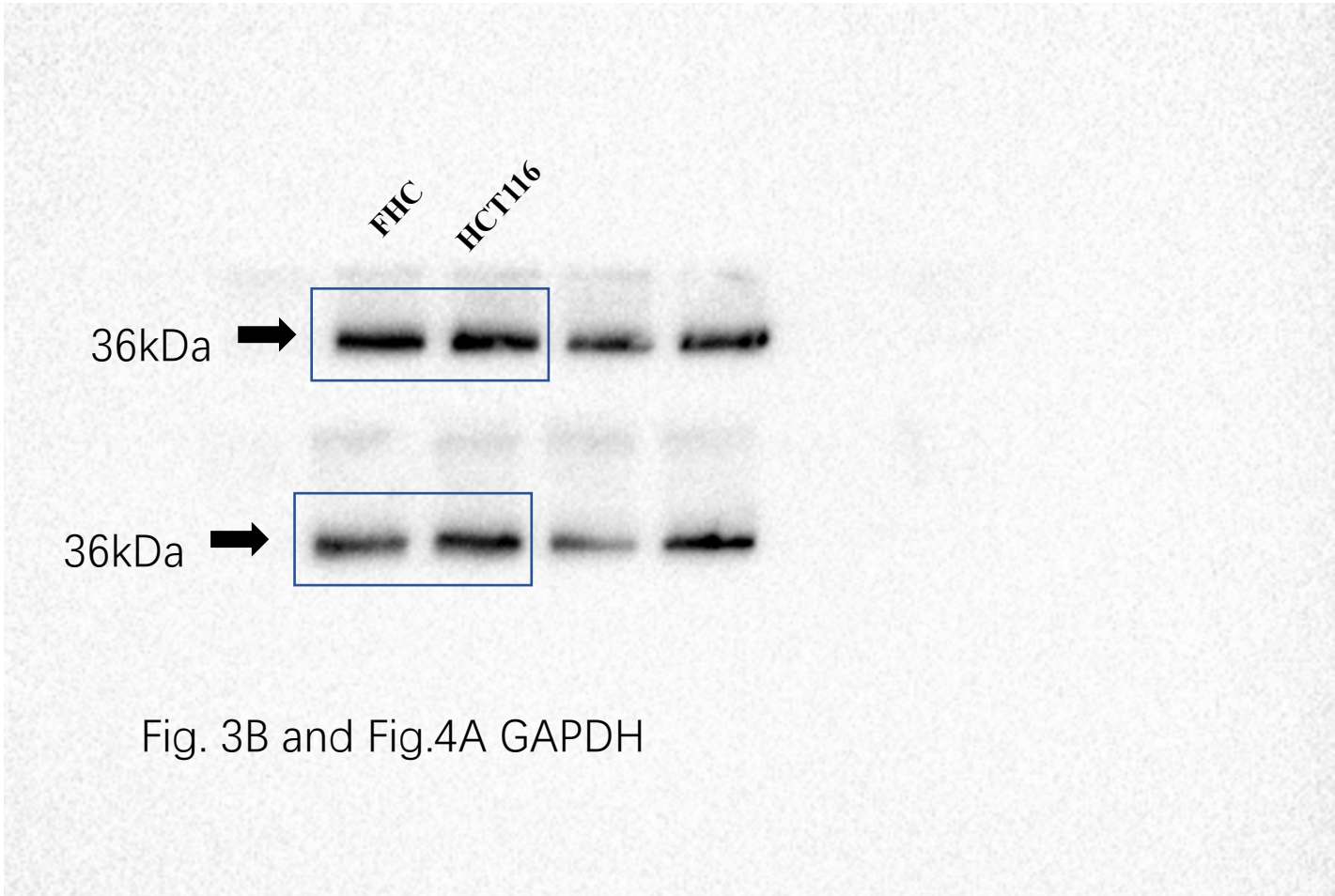
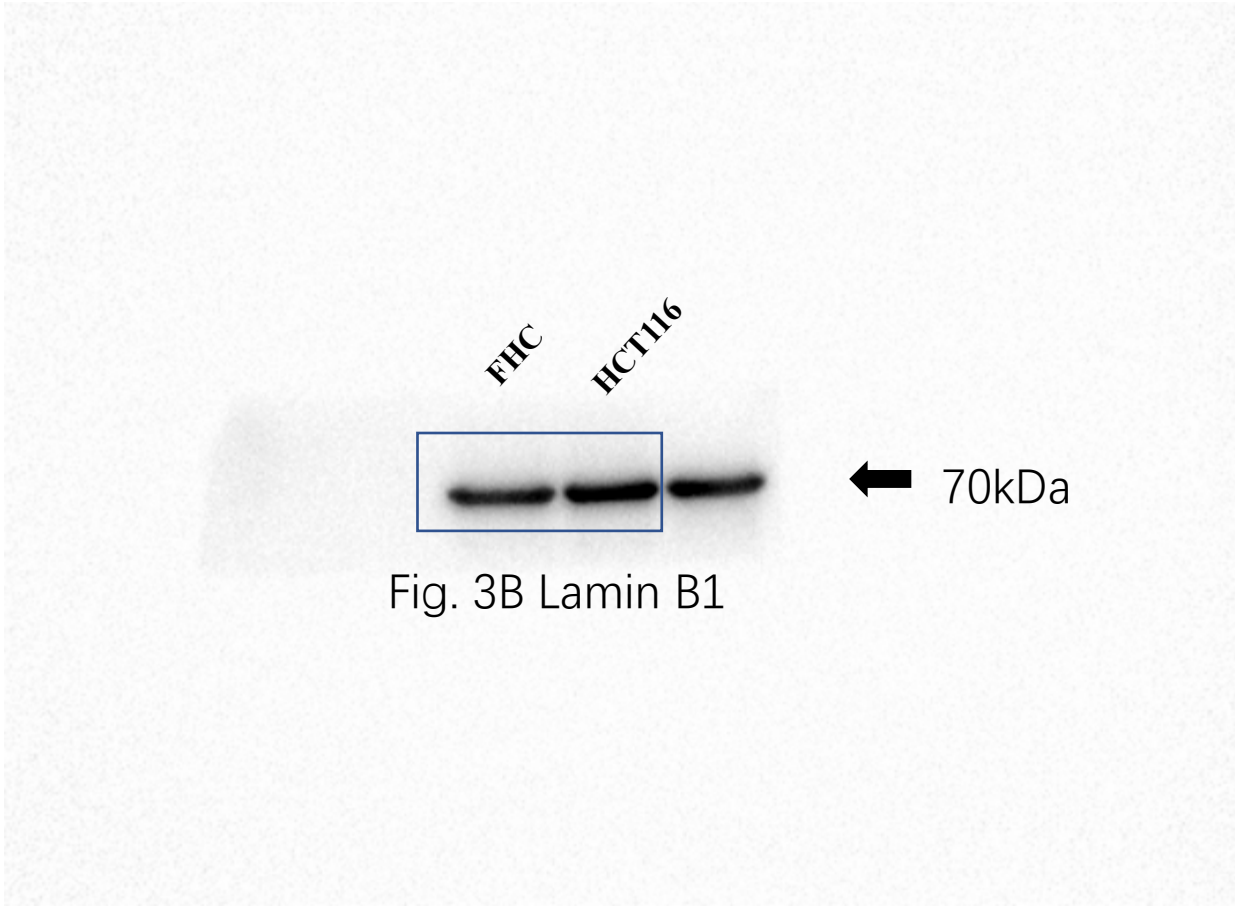


Fig. 3B and Fig.4A GAPDH



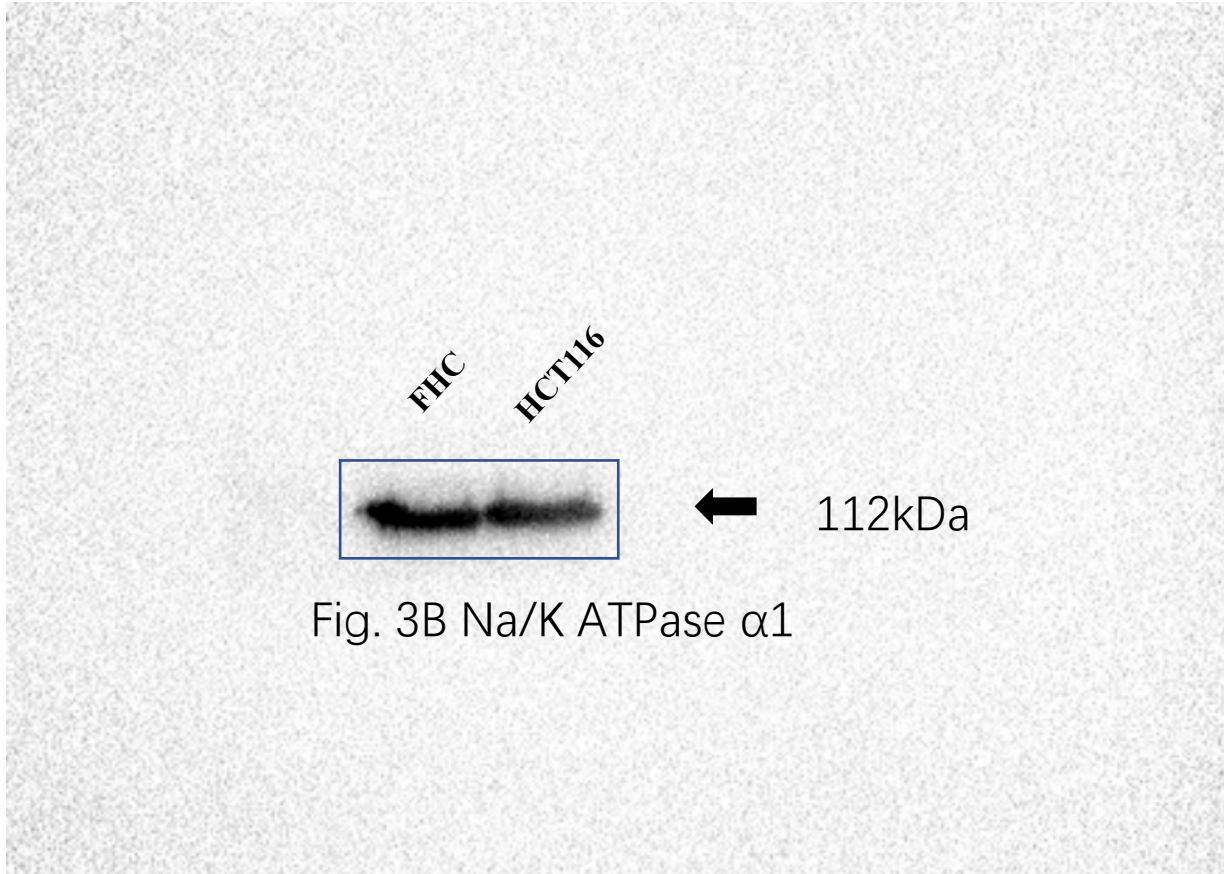


Fig. 3B Na/K ATPase α 1

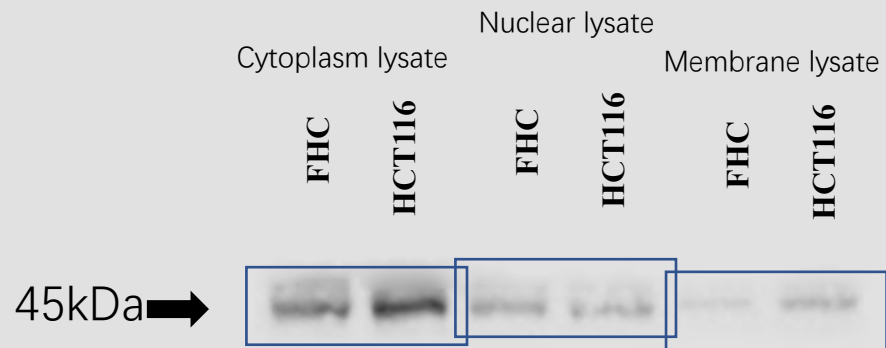
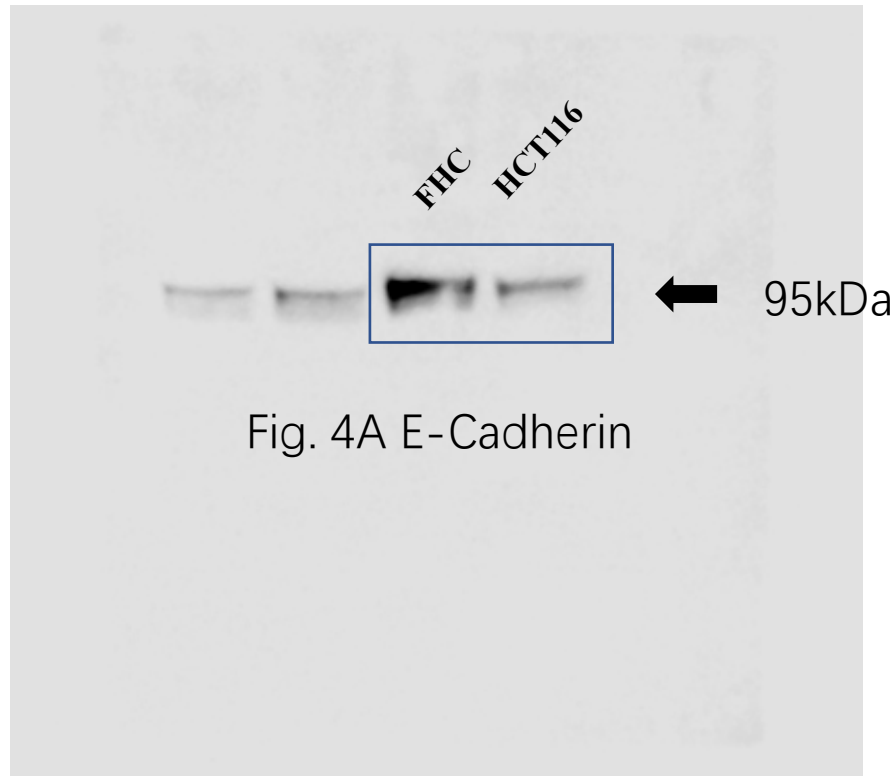
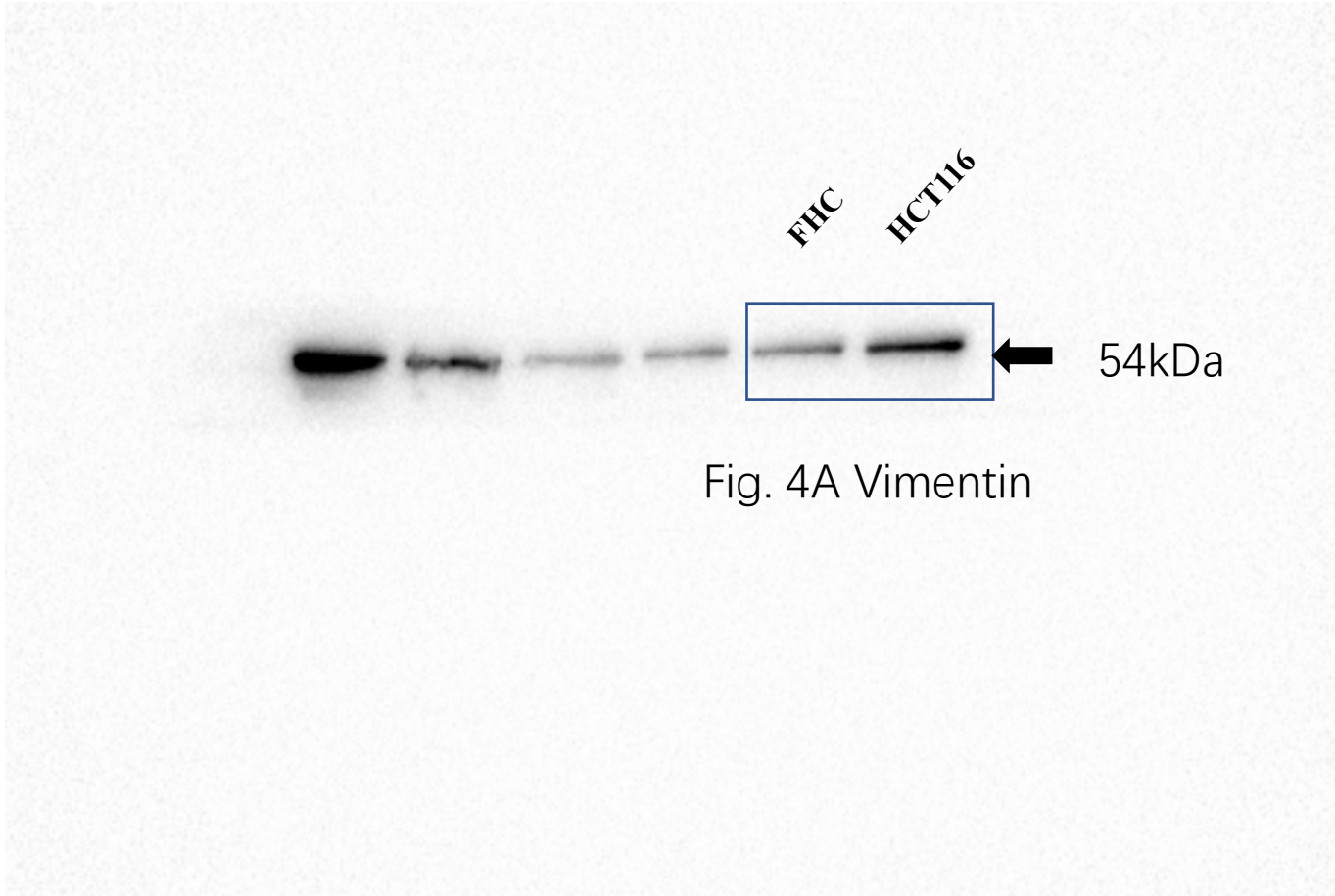
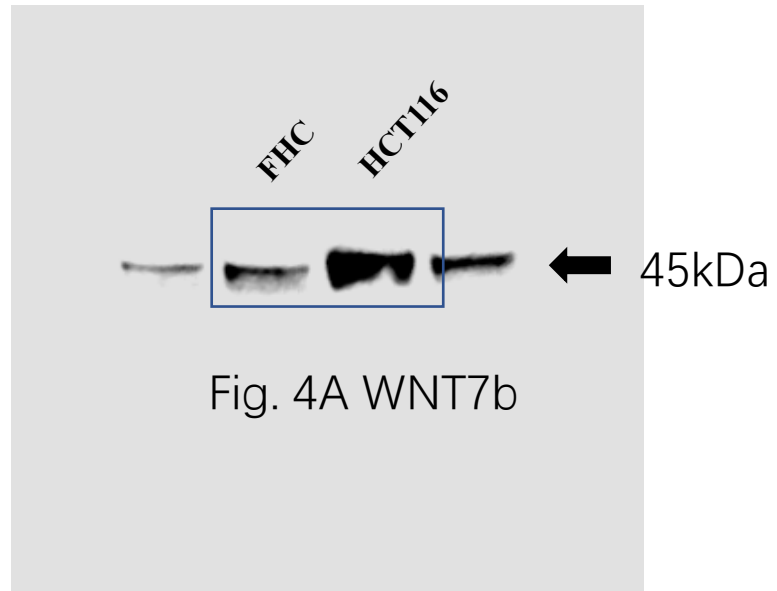
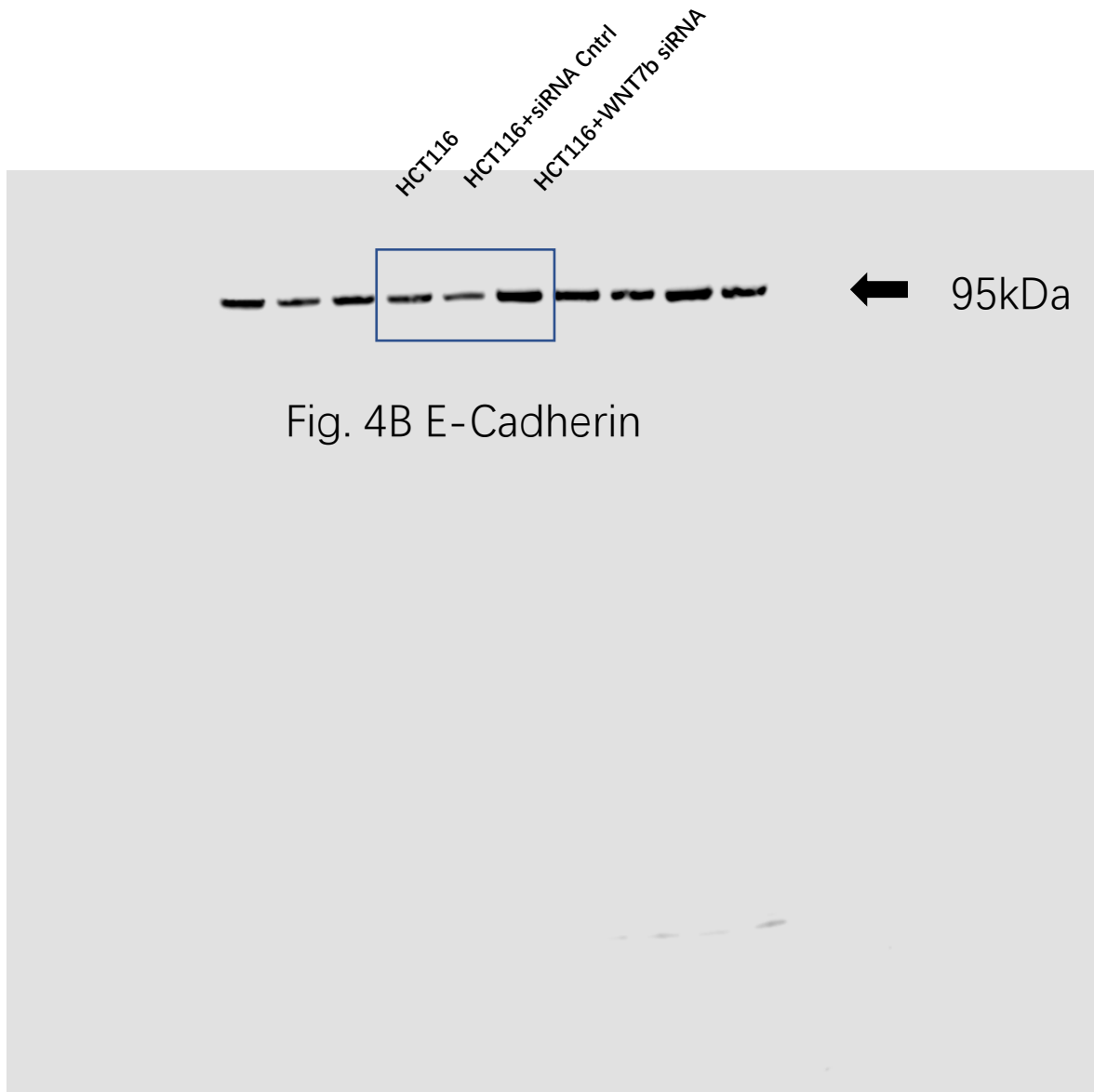


Fig. 3B cytoplasm/nuclear lysate/membrane WNT7b









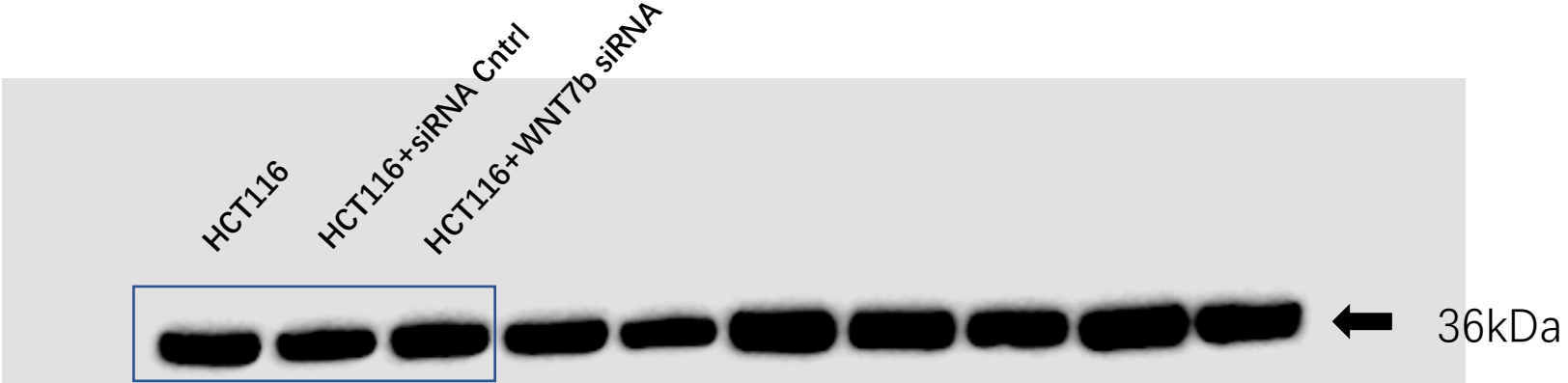


Fig. 4B GAPDH

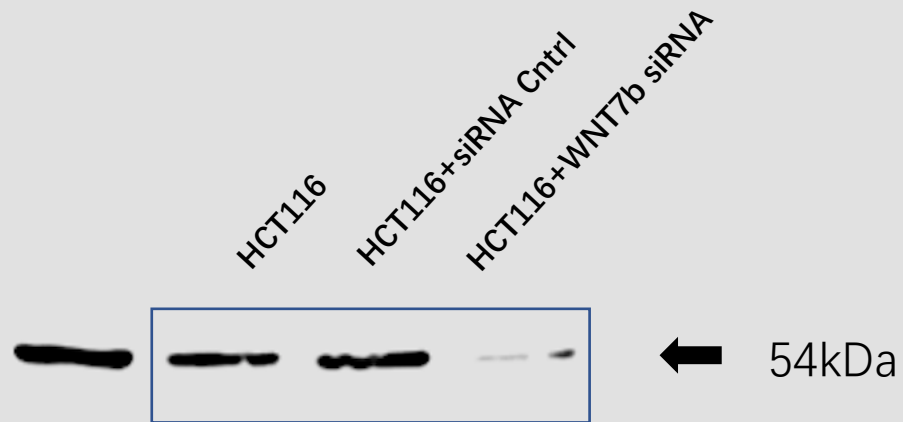


Fig. 4B Vimentin

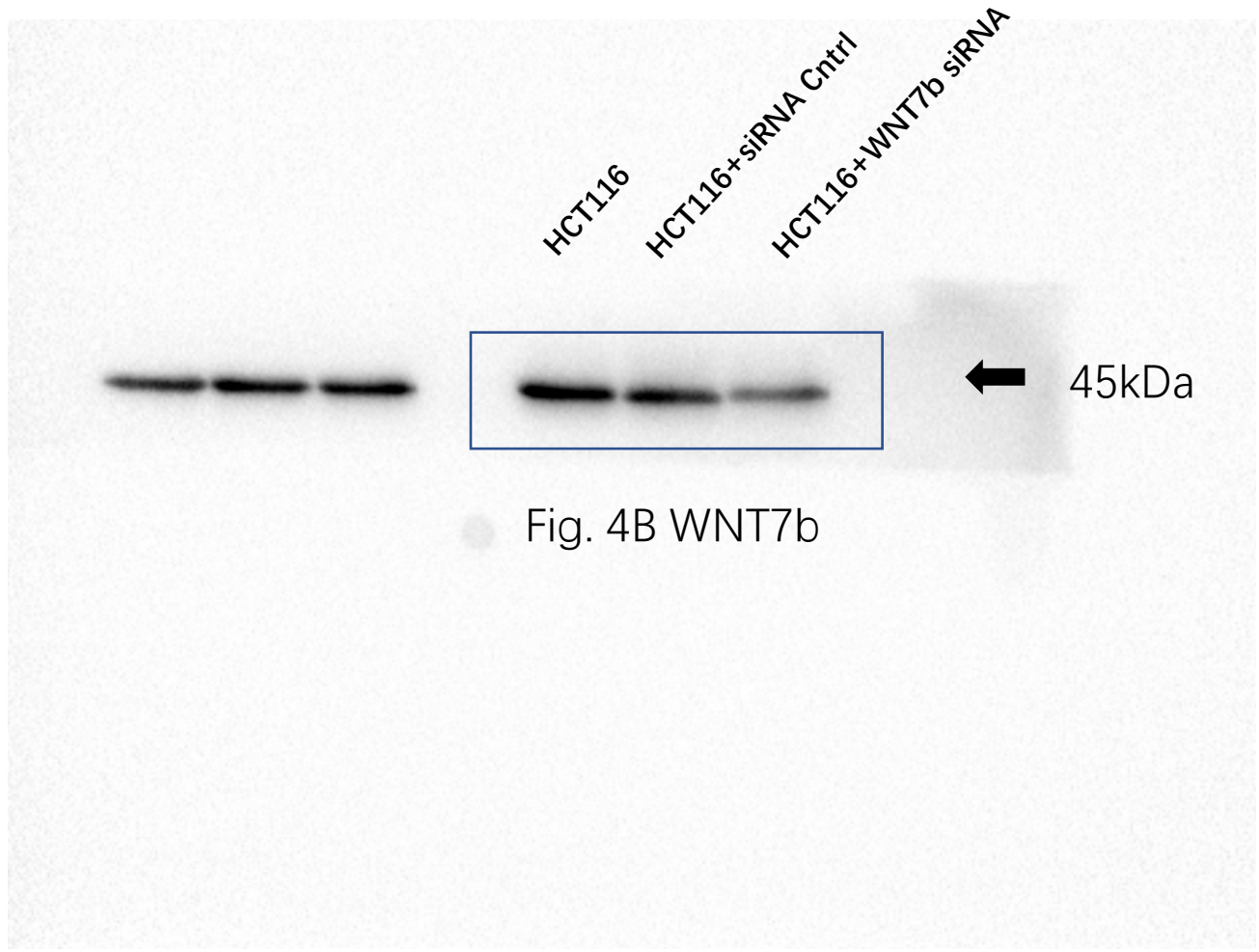




Fig. 4C E-Cadherin

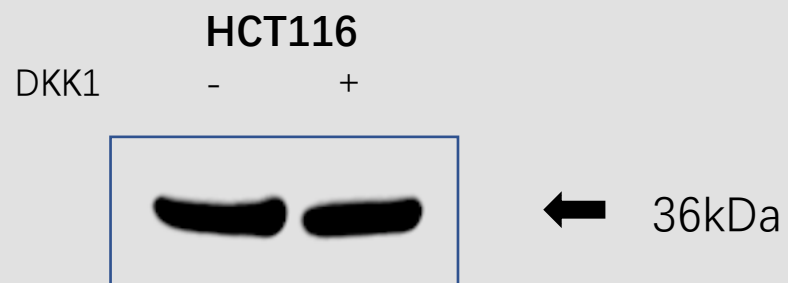


Fig. 4C GAPDH

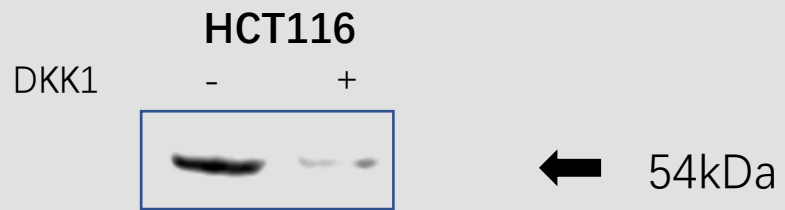


Fig. 4C Vimentin

