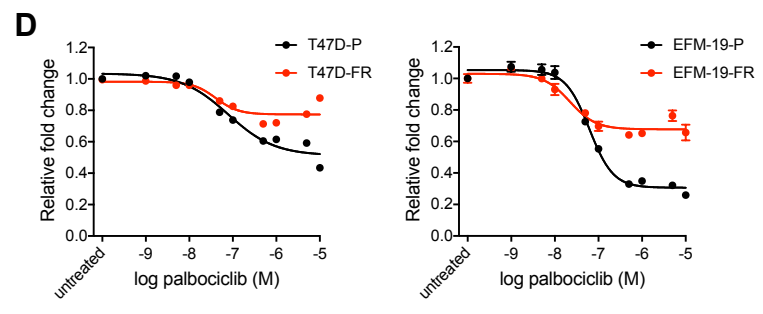


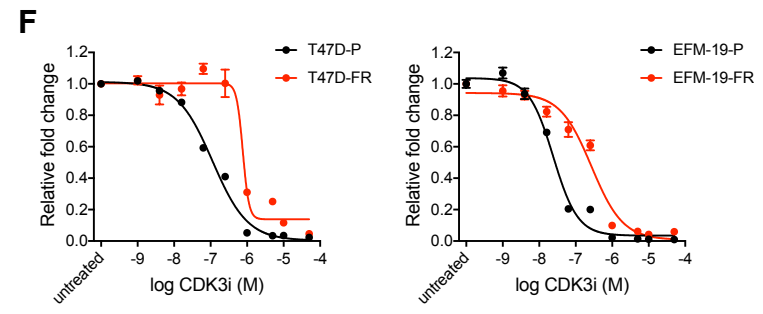
**C** IC50 VALUES PALBOCICLIB

	Parental	FR	p-value
<b>CAMA-1</b>	130 nM	511 nM	<0.0001
<b>MCF7</b>	116 nM	134 nM	0.477
<b>HCC1428</b>	446 nM	105 nM	<0.0001
<b>ZR-75-1</b>	200 nM	50 nM	<0.0001
<b>T47D</b>	79 nM	41 nM	0.038
<b>EFM-19</b>	62 nM	22 nM	0.0001



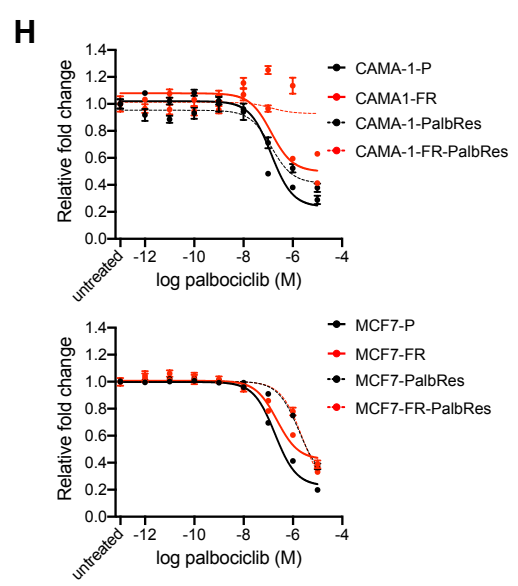
**E** IC50 VALUES CDK3i

	Parental	FR	p-value
<b>CAMA-1</b>	4 nM	15 nM	<0.0001
<b>MCF7</b>	26 nM	161 nM	<0.0001
<b>HCC1428</b>	156 nM	896 nM	<0.0001
<b>ZR-75-1</b>	111 nM	79 nM	0.006
<b>T47D</b>	113 nM	763 nM	<0.0001
<b>EFM-19</b>	22 nM	225 nM	<0.0001



**G** TIME TO DEVELOPE PALBOCICLIB RESISTANCE

	Weeks to resistance
<b>CAMA-1</b>	20
<b>CAMA-1-FR</b>	19
<b>MCF7</b>	11.5
<b>MCF7-FR</b>	22



**I** IC50 VALUES PALBOCICLIB

	IC50	p-value
<b>CAMA-1-P</b>	43 nM	
<b>CAMA-1-FR</b>	535 nM	<0.0001
<b>CAMA-1-PalbRes</b>	161 nM	<0.0001
<b>CAMA-1-FR-PalbRes</b>	>10 $\mu$ M	cannot be calculated
<b>MCF7-P</b>	187 nM	
<b>MCF7-FR</b>	224 nM	0.5459
<b>MCF7-PalbRes</b>	1.8 $\mu$ M	<0.0001
<b>MCF7-FR-PalbRes</b>	2.4 $\mu$ M	<0.0001

**J** IC50 VALUES FULVESTRANT

	IC50	p-value
<b>CAMA-1-P</b>	220 pM	
<b>CAMA-1-FR</b>	2.0 $\mu$ M	<0.0001
<b>CAMA-1-PalbRes</b>	911 pM	<0.0001
<b>CAMA-1-FR-PalbRes</b>	3.4 $\mu$ M	<0.0001
<b>MCF7-P</b>	690 pM	
<b>MCF7-FR</b>	1.6 $\mu$ M	<0.0001
<b>MCF7-PalbRes</b>	593 pM	0.4582
<b>MCF7-FR-PalbRes</b>	1.6 $\mu$ M	0.0001