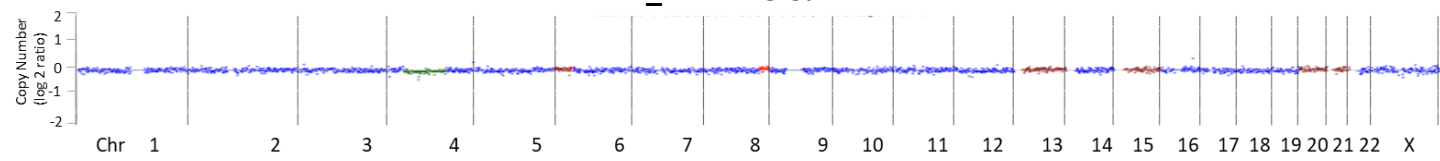
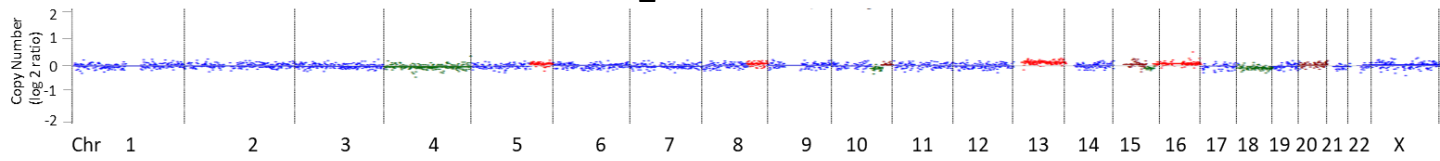


Figure S2. Genome-wide copy number profiles. Shown are genome-wide copy number profiles established with the ichorCNA algorithm. Plotted are log₂-ratios of read counts from 1 Mb bins. Blue indicated balanced region, green indicates losses of chromosomal material, red and brown indicated gain of chromosomal material. iTF, tumor fraction calculated from ichorCNA; BL, baseline plasma sample; EOT, plasma samples at the end of treatment; NA, sample not available

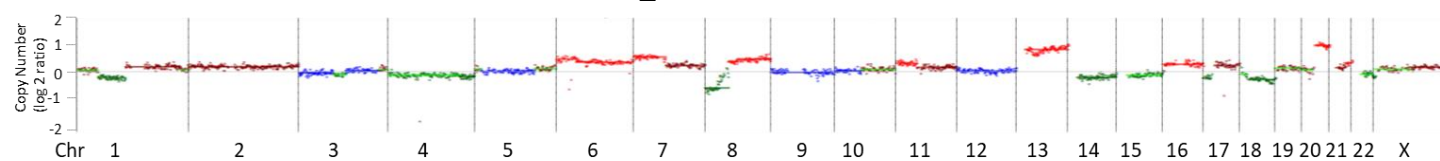
R1_BL: iTF 5.3%



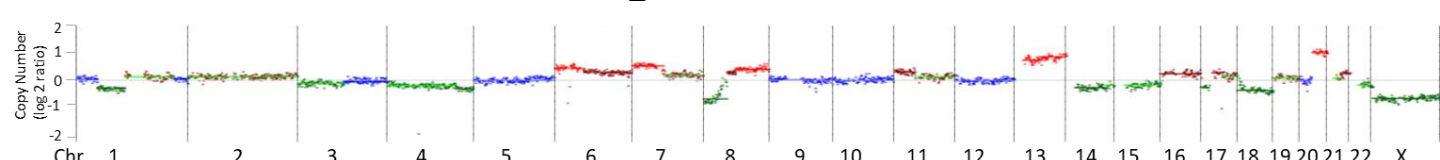
R1_EOT: iTF 4.1%



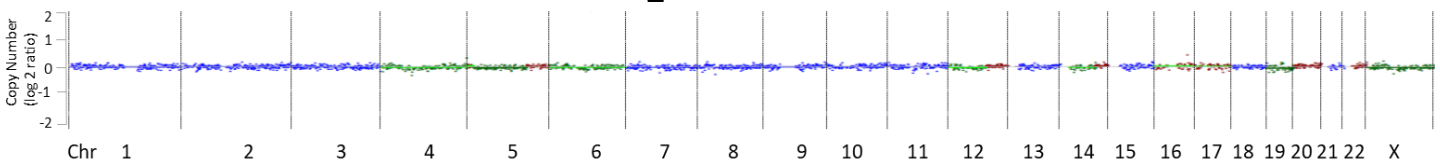
R2_BL: iTF 25.0%



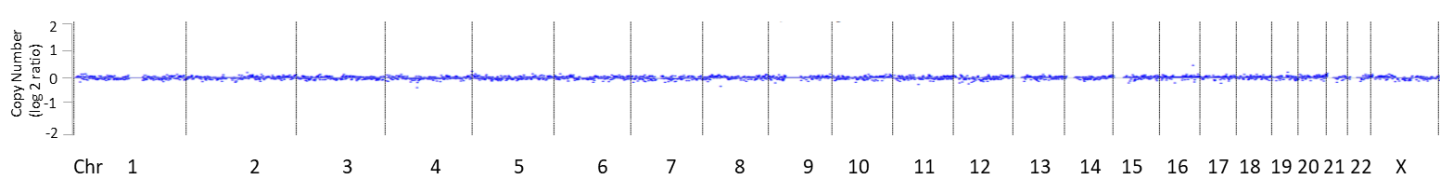
R2_EOT: iTF 35.4%



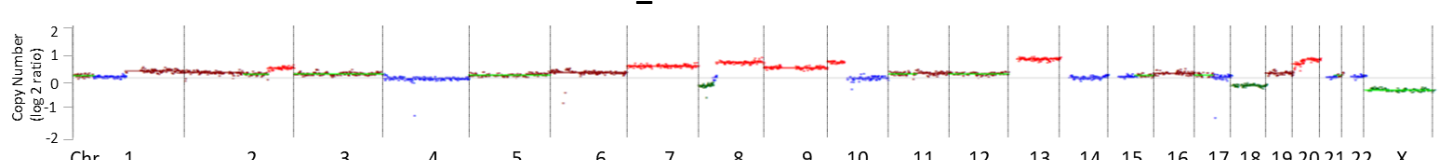
R3_BL: iTF 4.1%



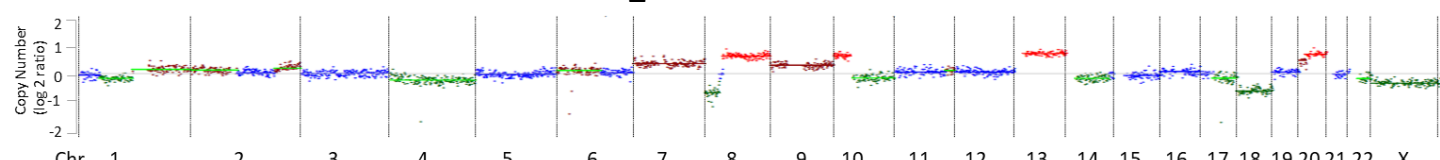
R3_EOT: iTF 0%



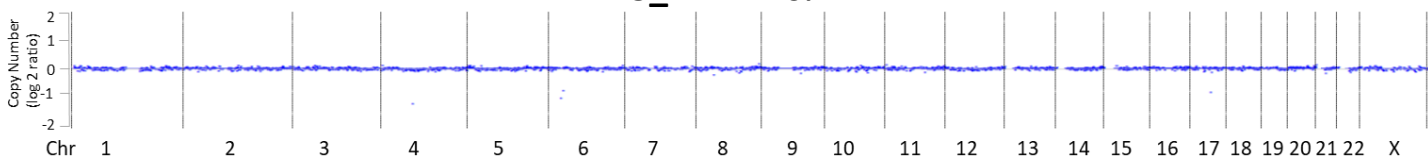
R4_BL: iTF 25.0%



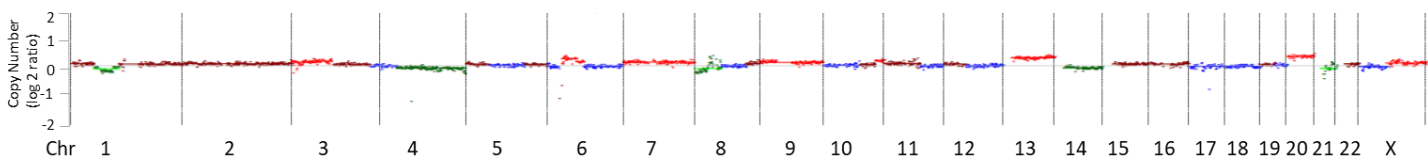
R4_EOT: iTF 50.6%



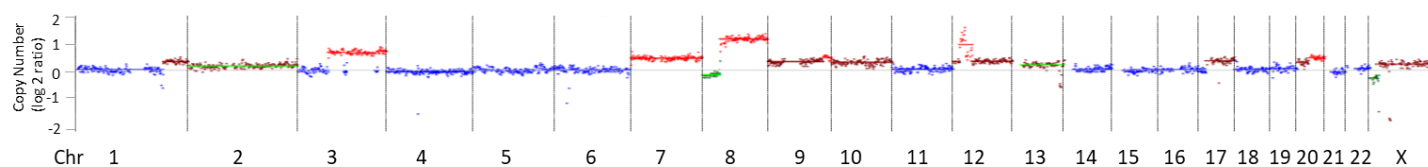
R5_BL: iTF 0%



R5_EOT: iTF 8.7%

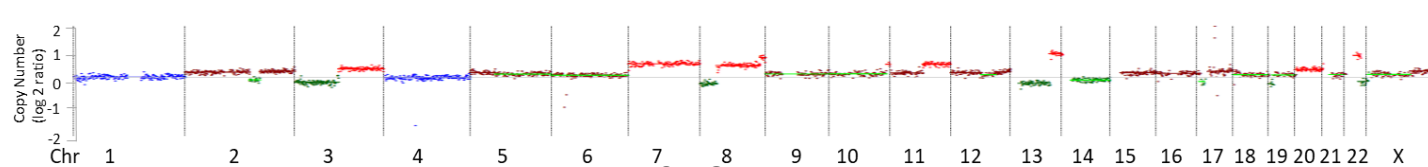


R6_BL: iTF 35.6%



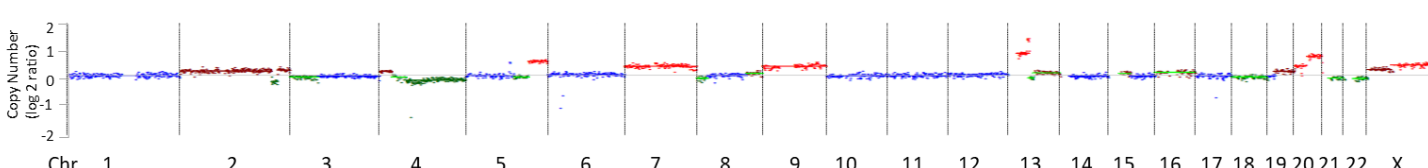
R6_EOT: NA

R8_BL: iTF 24.3%



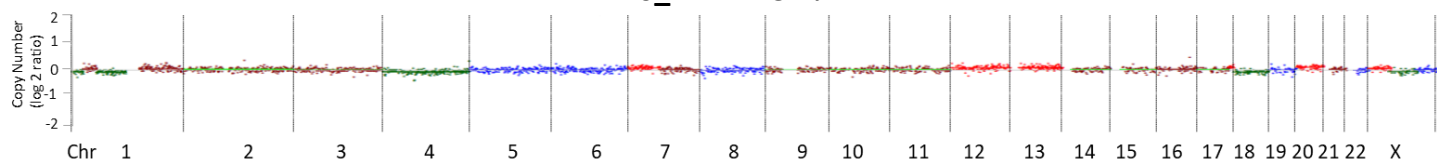
R8_EOT: NA

R9_BL: iTF 23.7%



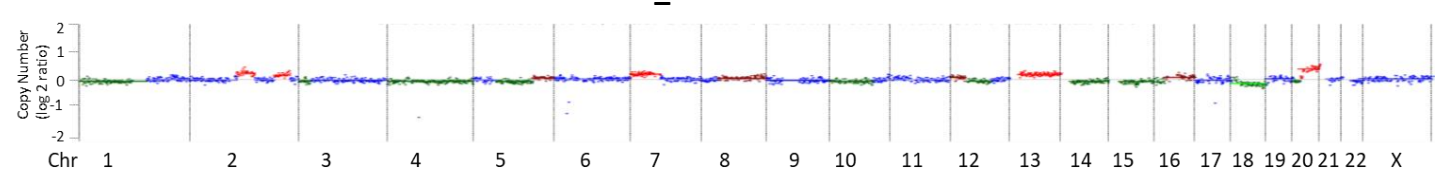
R9_EOT: NA

R10_BL: iTF 5.7%

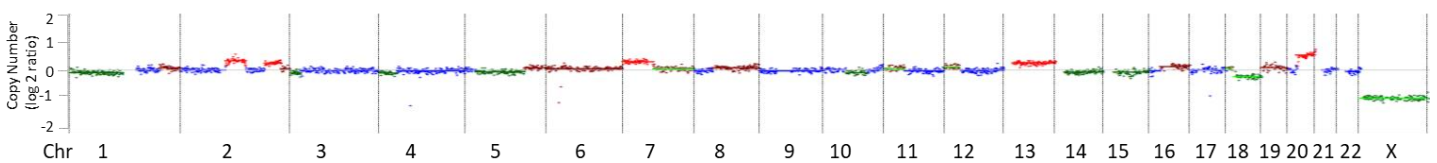


R10_EOT: NA

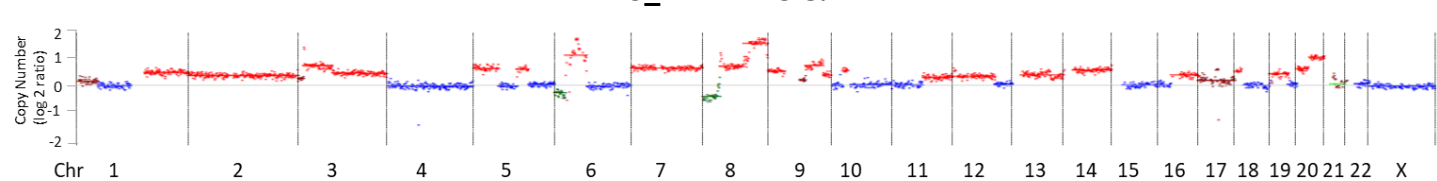
R11_BL: iTF 8.2%



R11_EOT: 10.5%

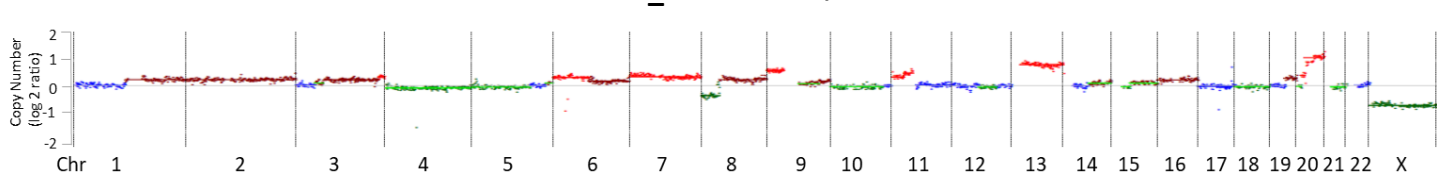


R13_BL: iTF 25.8%

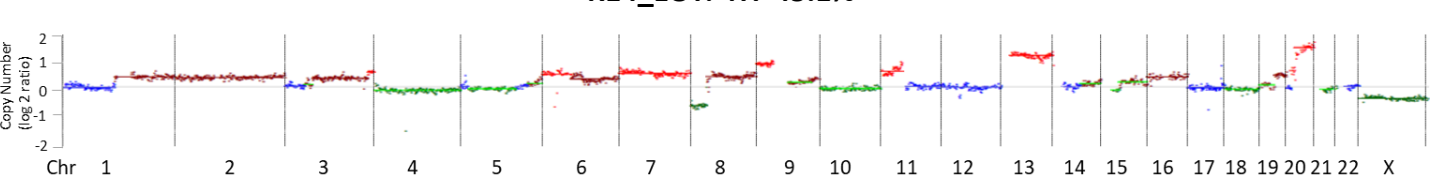


R13_EOT: NA

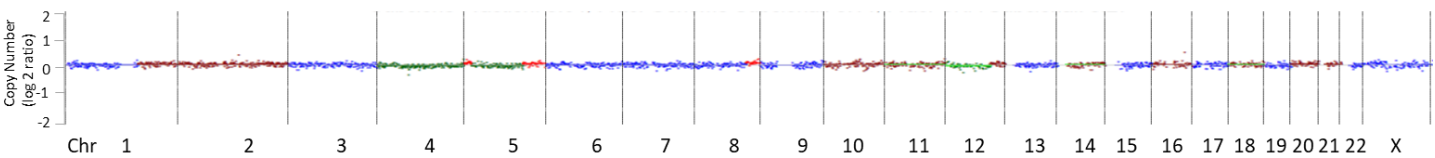
R14_BL: iTF 24.7%



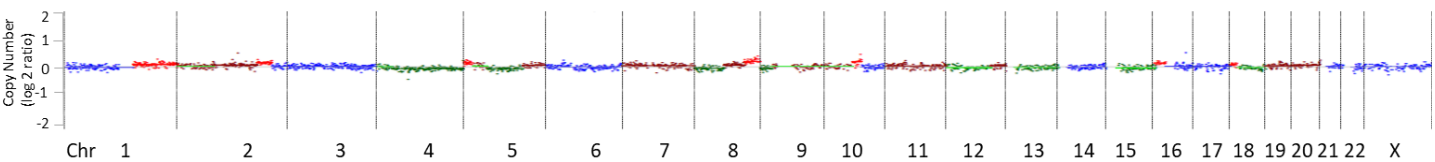
R14_EOT: iTF 45.1%



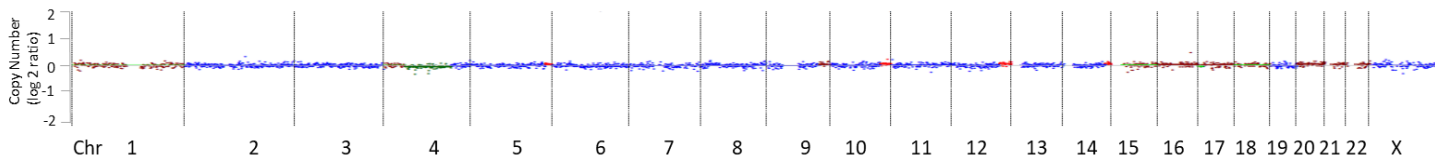
R15_BL: iTF 3.6%



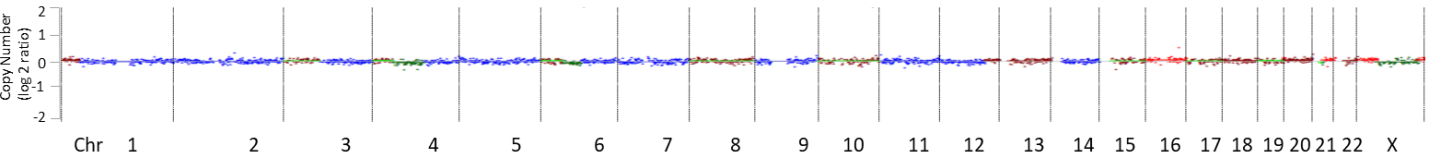
R15_EOT: iTF 6.2%



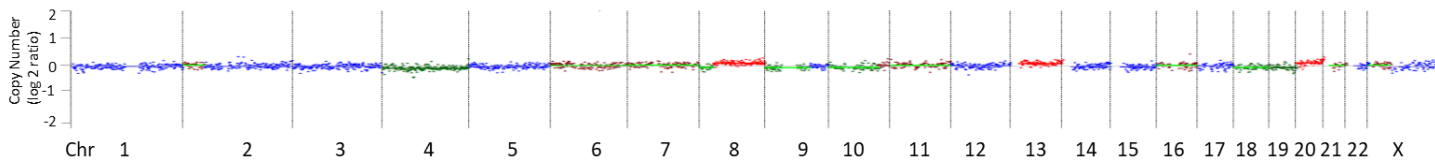
R16_BL: iTF 4.3%



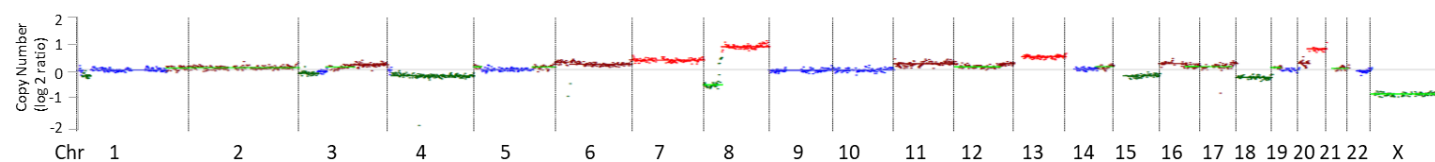
R16_EOT: iTF 4.3%



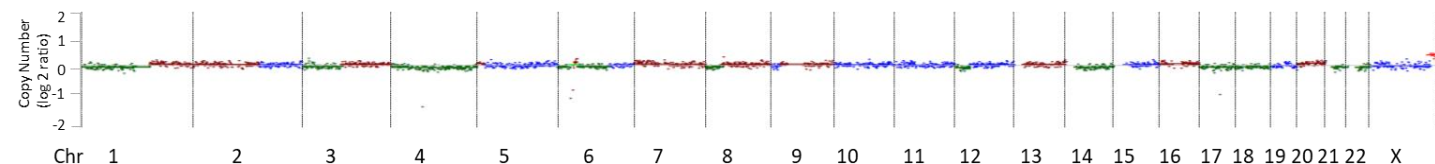
R17_BL: iTF 7.4%



R17_EOT: 27.0%

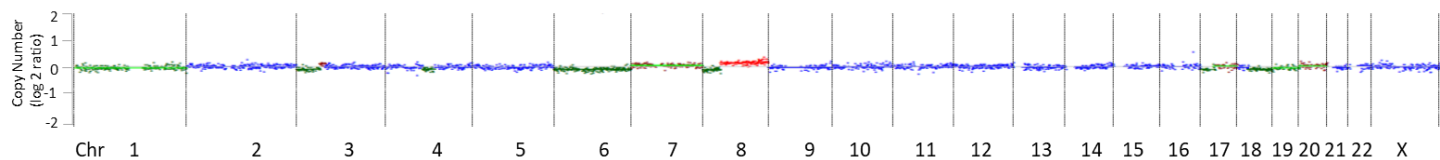


R18_BL: iTF 6.5%

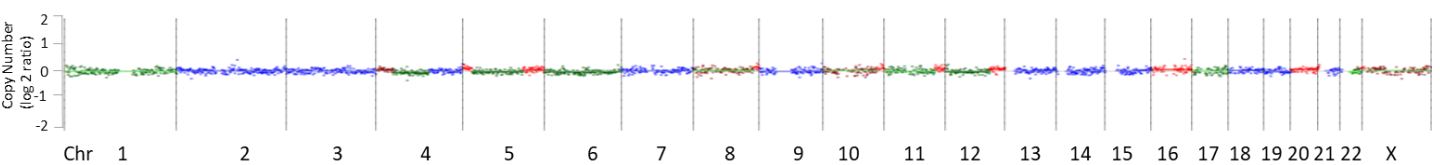


R18_EOT: NA

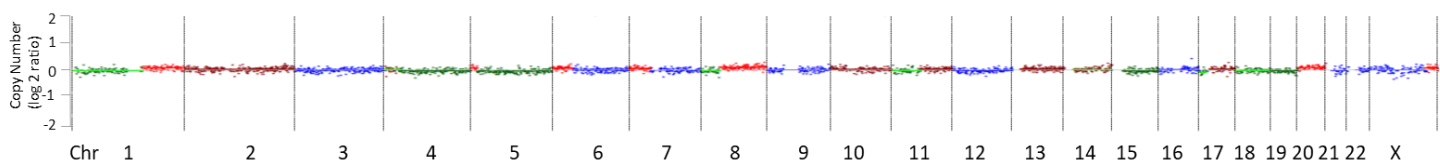
R19_BL: iTF 10.9%



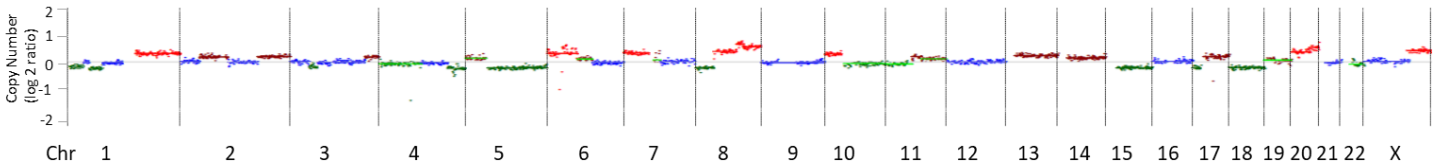
R19_EOT: iTF 3.8%



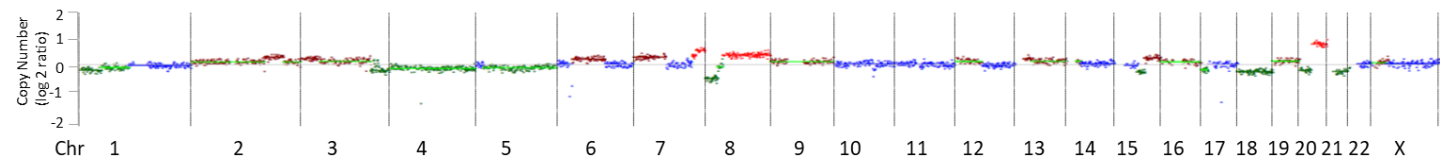
R20_BL: iTF 4.6%



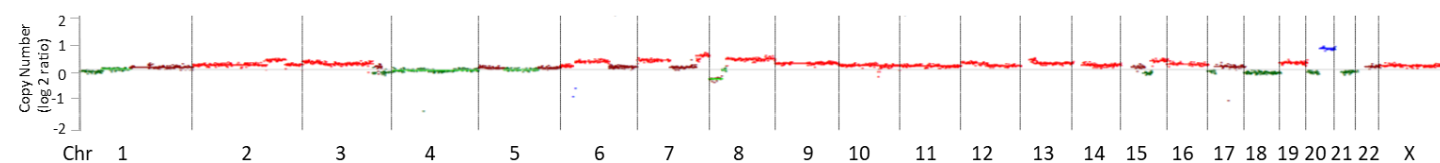
R20_EOT: 23.3%



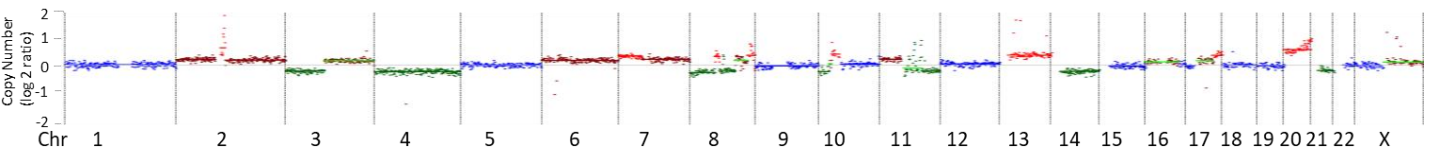
R21_BL: iTF 27.8%



R21_EOT: 10.5

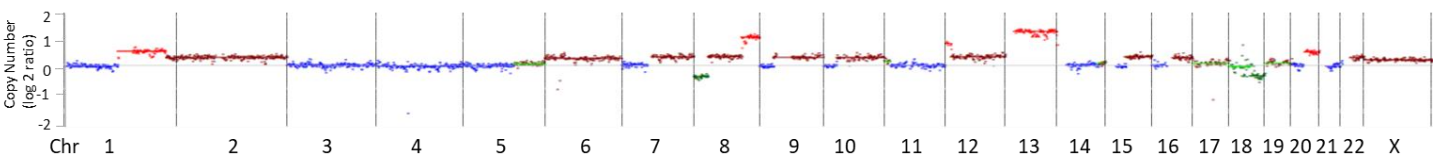


R22_BL: iTF 26.6%

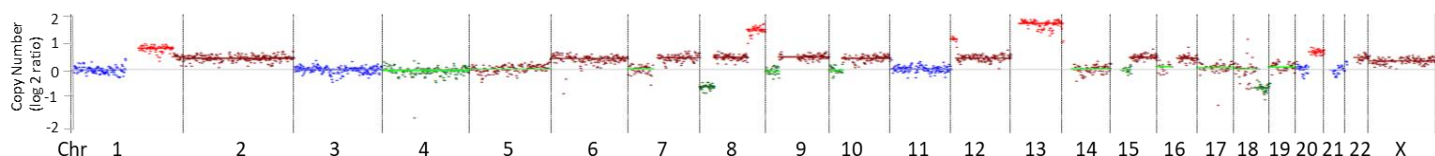


R3_EOT: NA

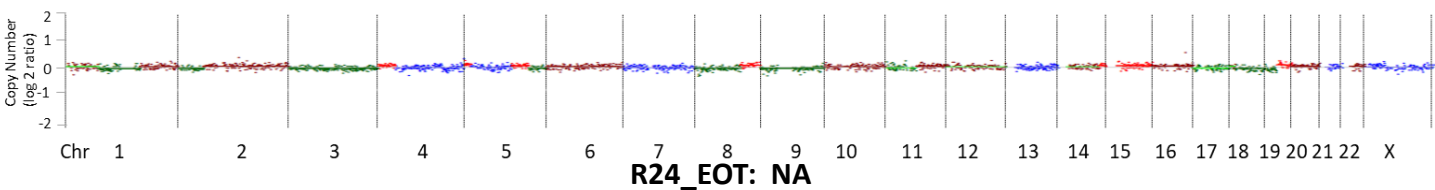
R23_BL: iTF 42.9%



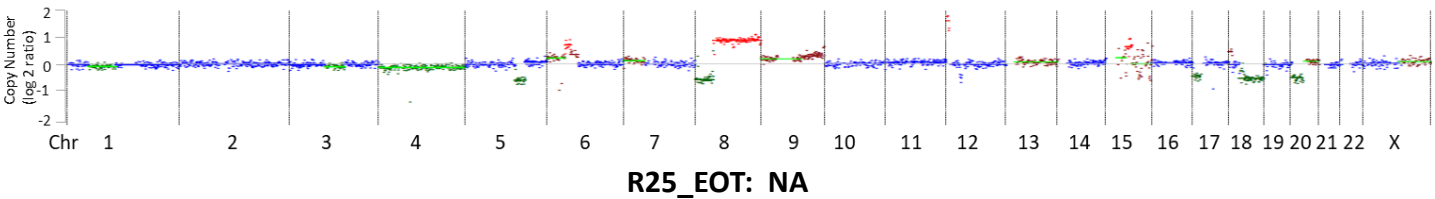
R23_EOT: iTF 60.3%



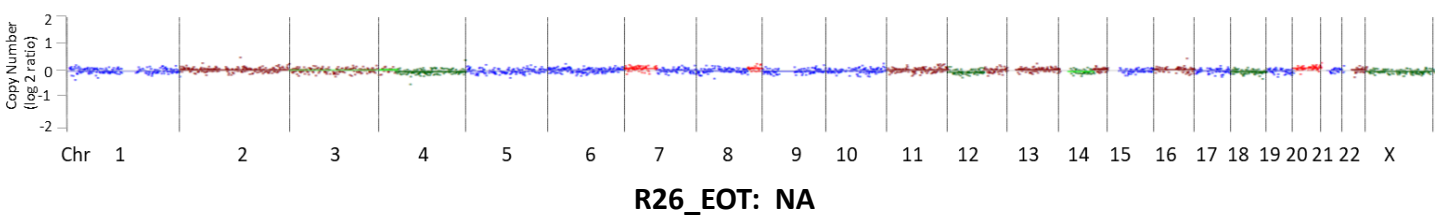
R24_BL: iTF 4.7%



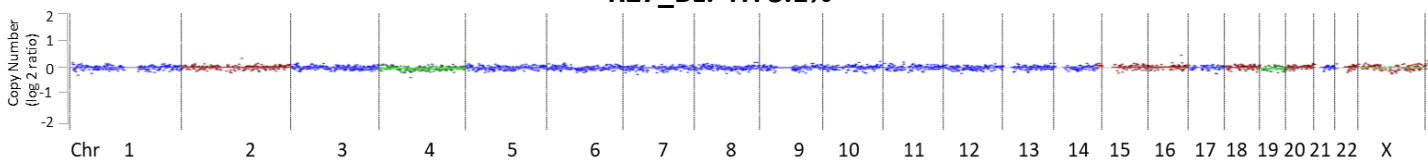
R25_BL: iTF 48.8%



R26_BL: iTF 4.6%

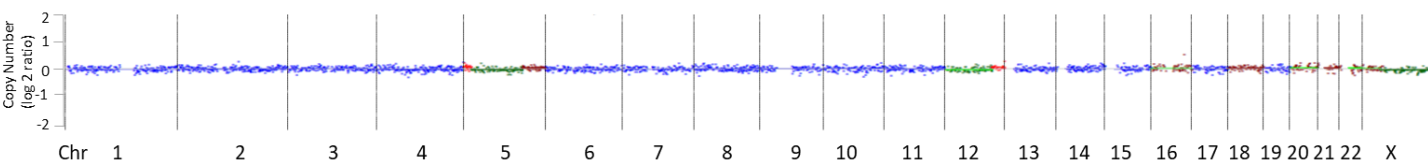


R27_BL: iTF3.1%

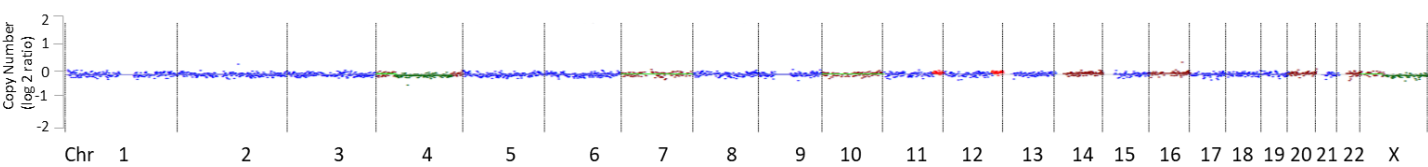


R27_EOT: NA

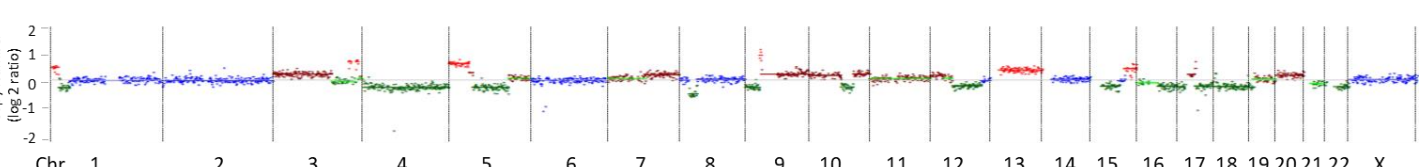
R28_BL: iTF 4.5%



R28_EOT: 4.2%

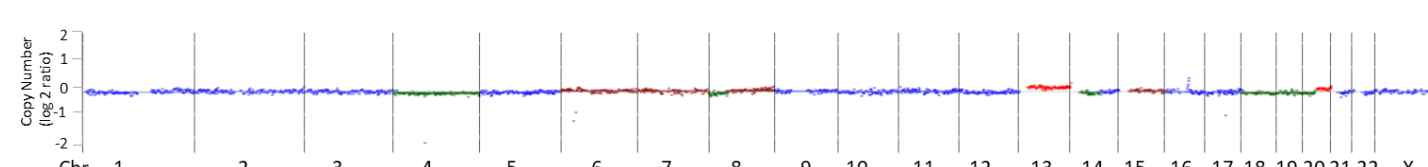


R29_BL: iTF28%



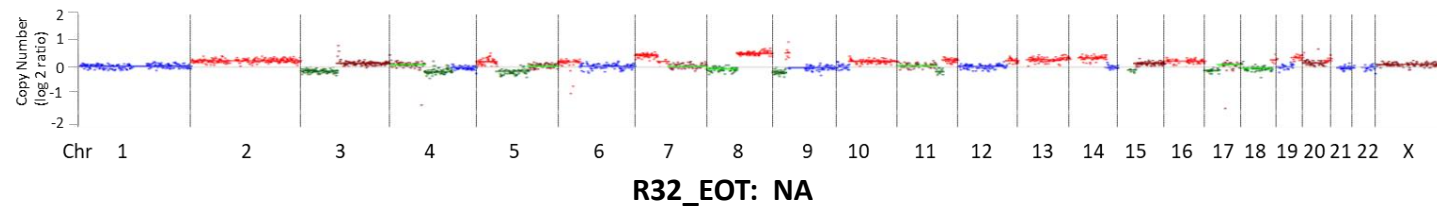
R29_EOT: NA

R31_BL: iTF 5.2%



R31_EOT: NA

R32_BL: iTF 15.6%



R33_BL: iTF 28.6%

