

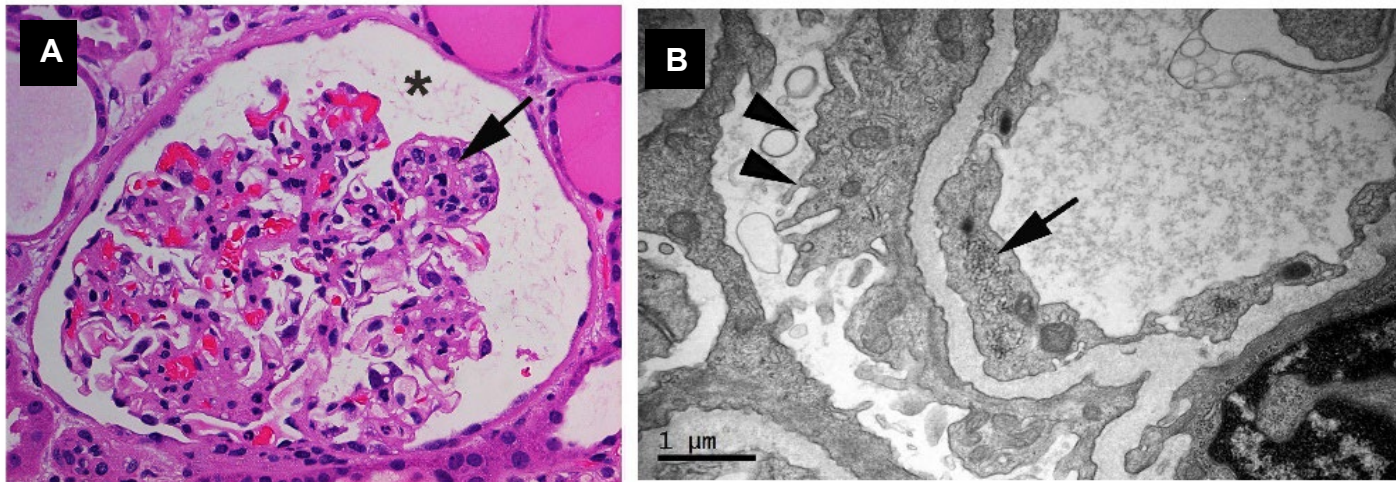
## **Supplemental Figures**

## **Table of Contents:**

1. Light and electron micrograph findings for Case 3
2. Light and electron micrograph findings for Case 4
3. Light and electron micrograph findings for Case 5
4. Light micrograph findings for Case 6
5. Chromatograms of *APOL1* exons from renal allograft in Case 2.

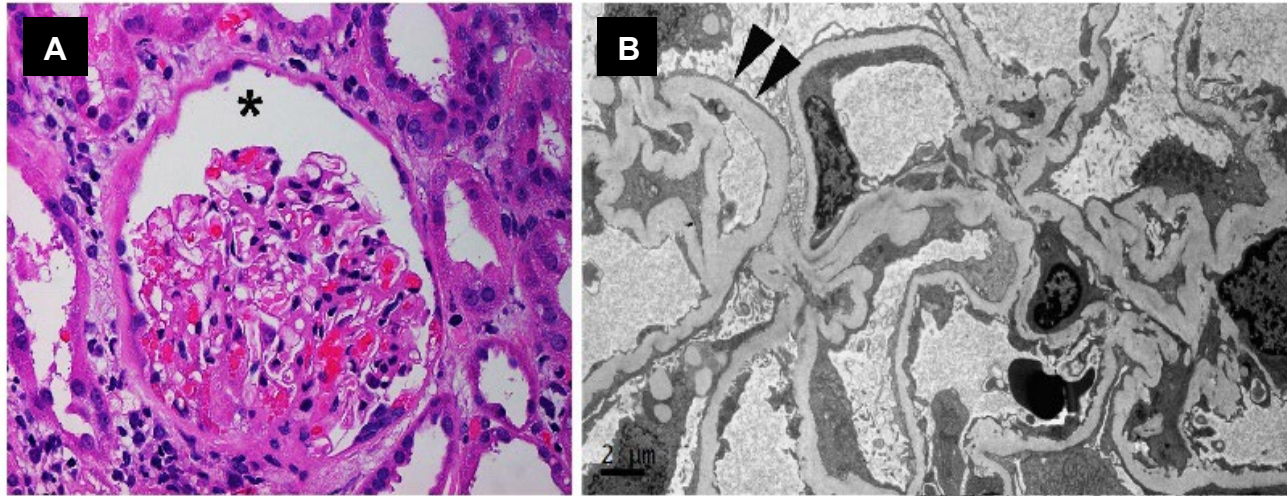
### Supplemental Figure 1: Light and electron micrograph findings for Case 3

Panel A: Light micrograph (Hematoxylin & Eosin stain) showing expansion of Bowman's space (asterisk), retraction of the glomerular tuft and endocapillary proliferation (arrow). Panel B: Electron micrograph showing diffuse podocyte effacement (arrowheads) and tubuloreticular inclusions in a glomerular endothelial cell (arrow).



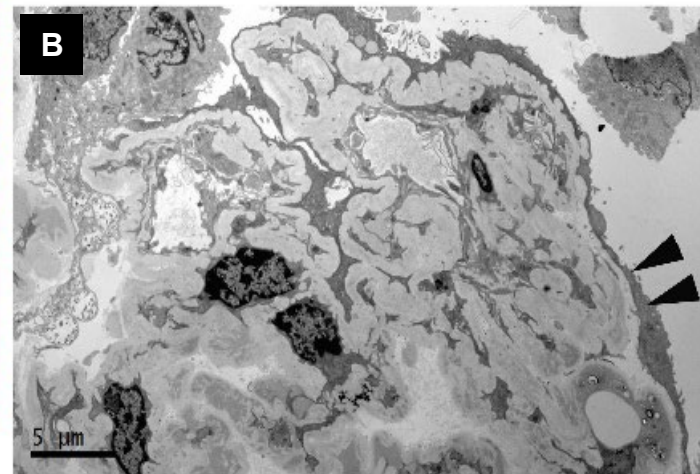
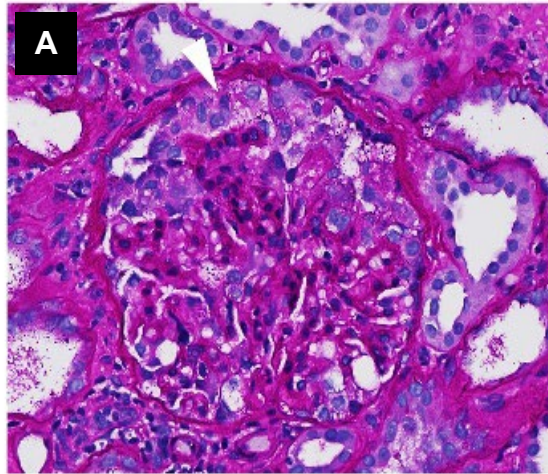
**Supplemental Figure 2: Light and electron micrograph findings for Case 4**

Panel A: Light micrograph (Hematoxylin & Eosin stain) showing expansion of the urinary space (asterisk) and retraction of the glomerular tuft. Panel B: Electron micrograph showing diffuse podocyte effacement (arrowheads).



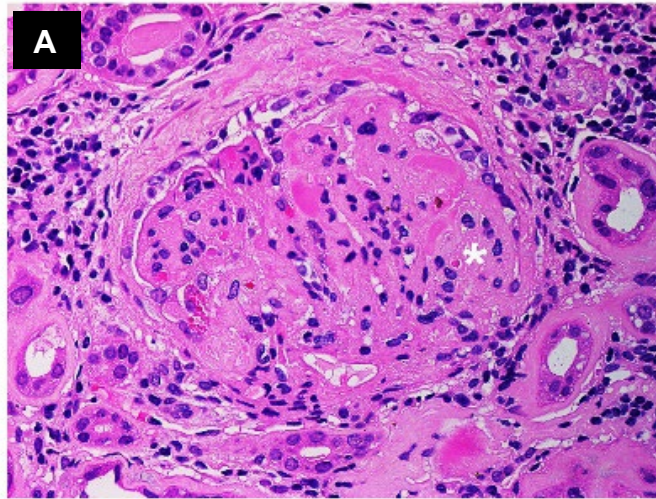
**Supplemental Figure 3: Light and electron micrograph findings for Case 5**

Panel A: Light micrograph (Hematoxylin & Eosin stain) showing podocyte proliferation (arrowhead) in a glomerulus. Panel B: Electron micrograph showing diffuse podocyte effacement (arrowheads).



**Supplemental Figure 4: Light and electron micrograph findings for Case 6**

Panel A: Light micrograph (Hematoxylin & Eosin stain) showing severe glomerulosclerosis (white asterisk).



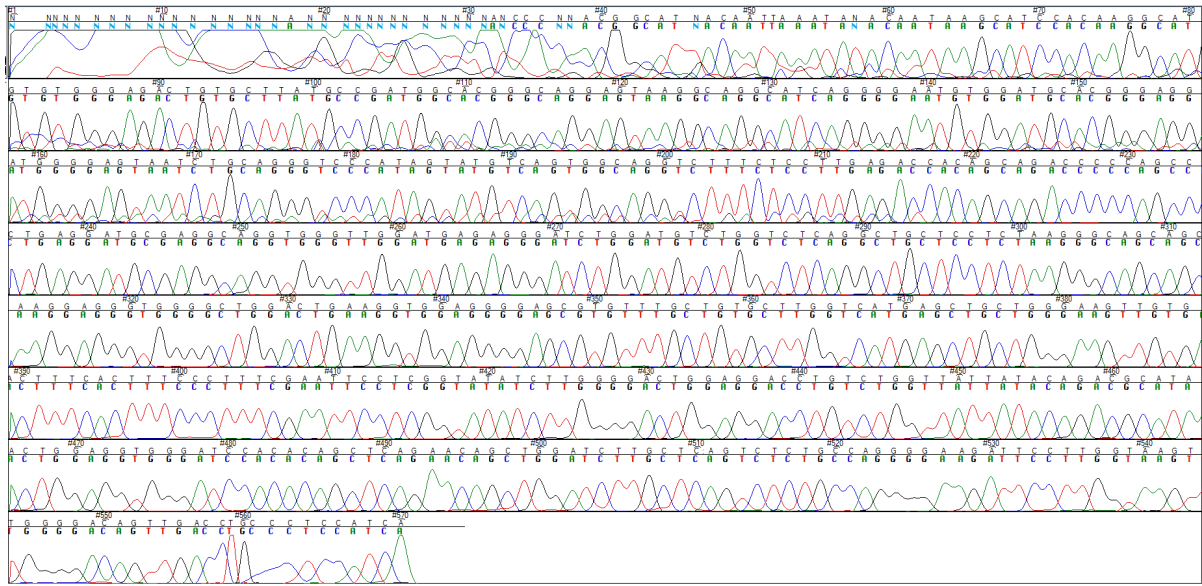
**Supplemental Figure 5:**

**Chromatograms of *APOL1* exons from renal allograft from Case 2**

Amplicons were generated using primers from Limou et al. (Sequencing rare and common *APOL1* coding variants to determine kidney disease risk . *Kidney Int* 2015 Oct;88(4):754-63, PMID: 25993319)

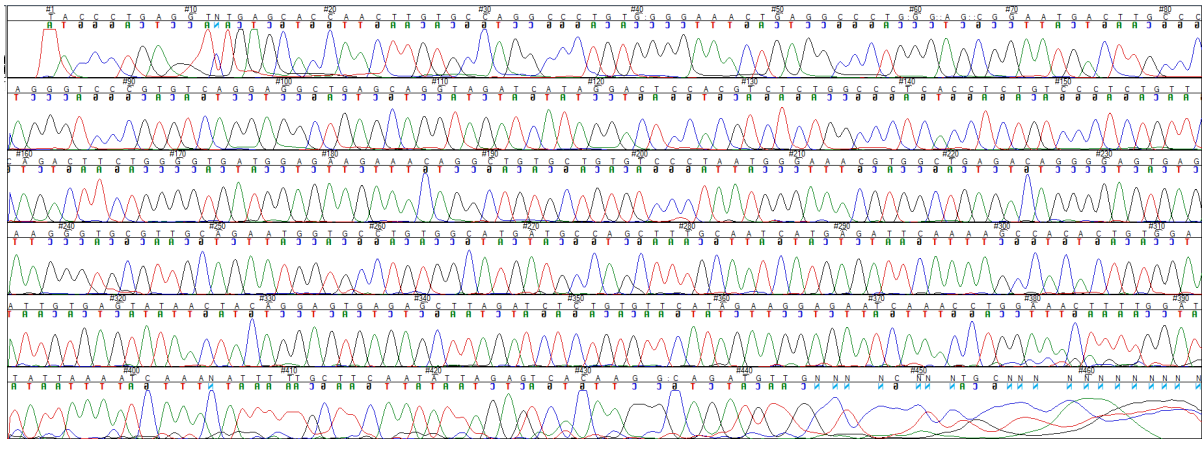
Primary sequence trace files (.ab1) are available by request from authors.

# EXON 1



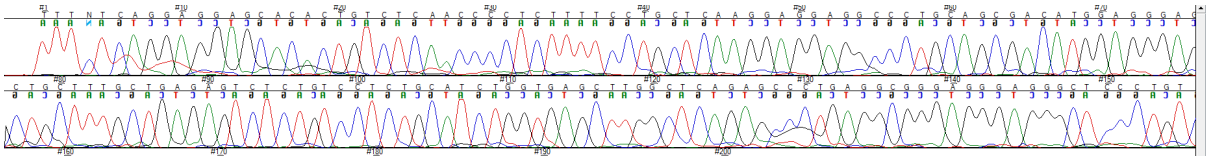


EXON 1

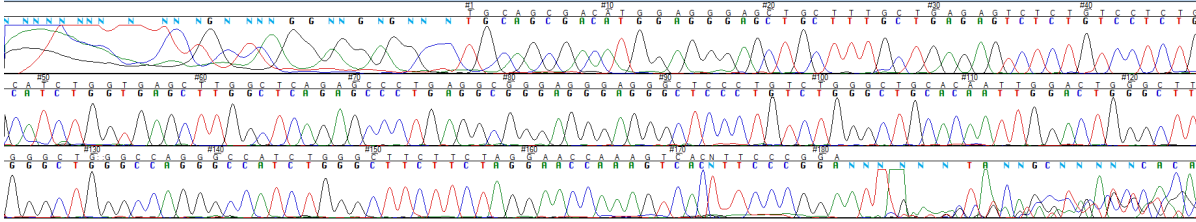




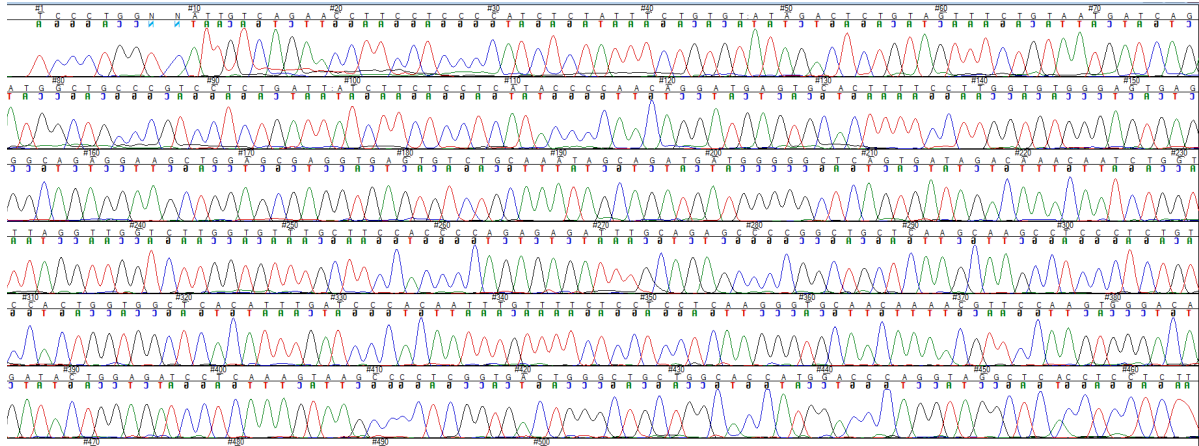
EXON 3



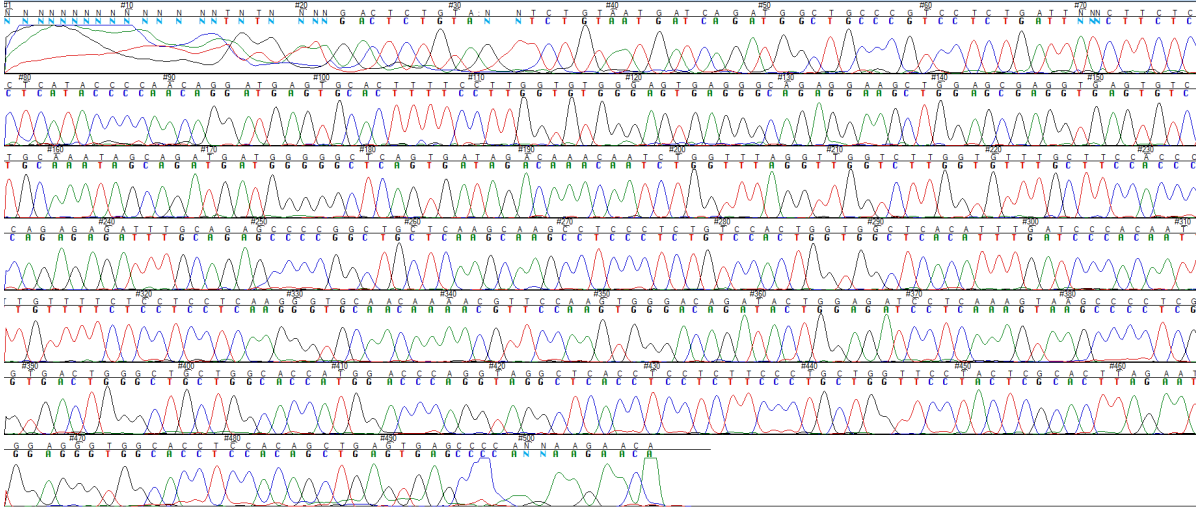
EXON 3



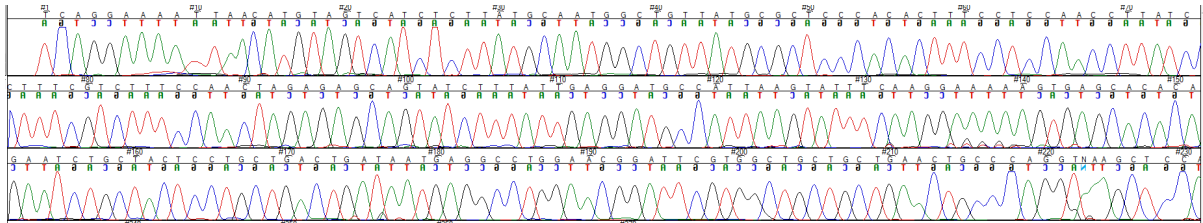
# EXONS 4 & 5



EXONS 4 & 5



EXON 6

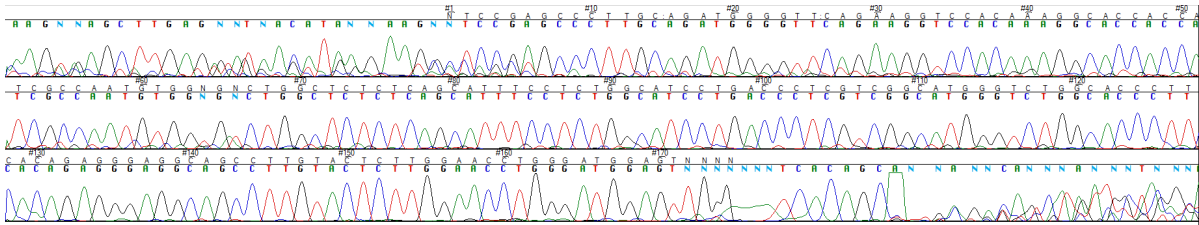




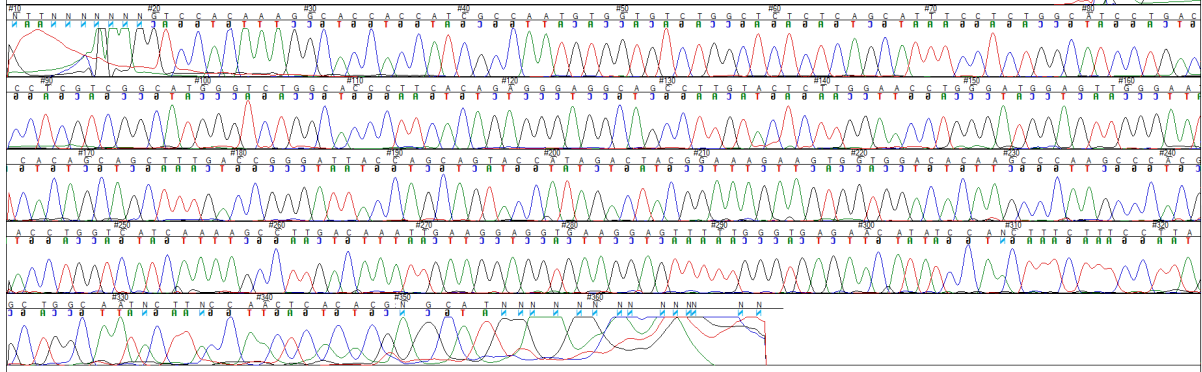




EXON 7-1



EXON 7-2





### EXON 7-3

