

Supplementary materials for:

AT₁ receptor blocker, but not an ACE inhibitor, prevents kidneys from hypoperfusion during congestive heart failure in normotensive and hypertensive rats

Vojtech Kratky^{1,2,3}, Zdenka Vanourkova¹, Matus Sykora⁴, Barbara Szeiffova Bacova⁴, Zdenka Hruskova³, Sona Kikerlova¹, Zuzana Huskova¹, Libor Kopkan¹

¹ Center for Experimental Medicine, Institute for Clinical and Experimental Medicine, Prague, Czech Republic.

² Department of Pathophysiology, 2nd Faculty of Medicine, Charles University, Prague, Czech Republic.

³ Department of Nephrology, First Faculty of Medicine, Charles University and General University Hospital in Prague, Prague, Czech Republic

⁴ Institute for Heart Research, Centre of Experimental Medicine, Slovak Academy of Sciences, Bratislava, Slovak republic

Author for correspondence:

Vojtech Kratky, M.D.

Center for Experimental Medicine, Institute for Clinical and Experimental Medicine, 1958/9 Videnska, CZ-140 00 Prague 4, Czech Republic.

Email: Vojtech.Kratky@vfn.cz

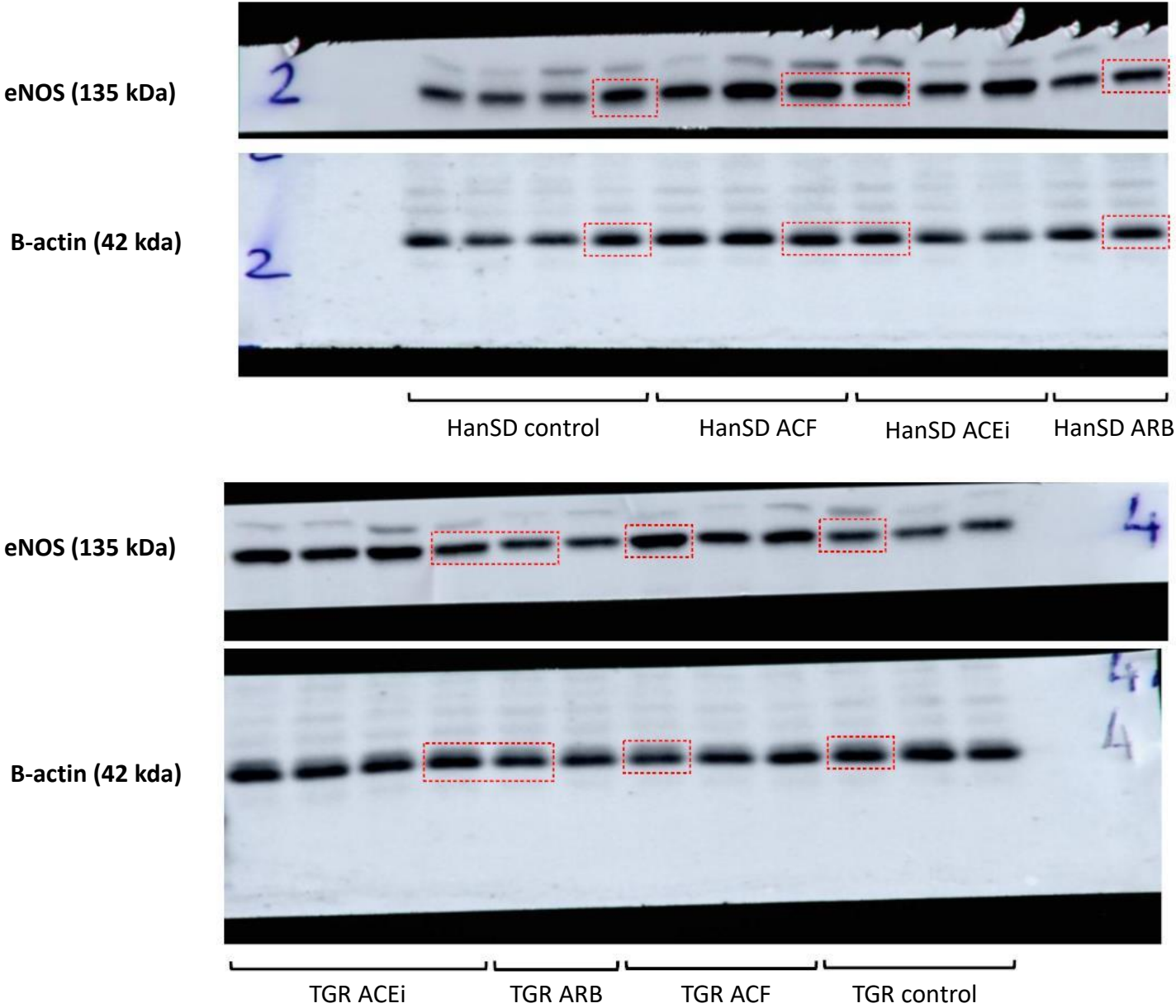
Supplementary Table 1 Organ weights of control, untreated heart failure (HF), ACE inhibitor-treated (HF + ACEi) and AT₁ receptor blocker-treated (HF + ARB) HanSD and TGR rats. Please note that data from HF TGR rats were obtain in 5 weeks after ACF induction due to high mortality.

	HanSD rats				TGR rats			
	Control	HF	HF + ACEi	HF + ARB	Control	HF	HF + ACEi	HF + ARB
Heart weight (mg)	1543 ± 115	2782 ± 481 *	2306 ± 196 * #	2514 ± 256 *	1950 ± 131 ¥	2468 ± 337 *	2149 ± 257 * #	2202 ± 272 * #
Left ventricle weight (mg)	1108 ± 78	1760 ± 232 *	1527 ± 114 * #	1660 ± 147 *	1482 ± 85 ¥	1687 ± 159 *	1418 ± 157 # ¥	1481 ± 178 # ¥
Right ventricle weight (mg)	309 ± 31	625 ± 126 *	522 ± 54 * #	572 ± 76 *	315 ± 30 *	490 ± 106 *	519 ± 124 *	492 ± 75 *
Lung weight (mg)	1987 ± 126	2578 ± 623 *	2216 ± 216 #	2278 ± 172 #	2057 ± 182	2558 ± 638 *	2333 ± 235 #	2331 ± 171 #
Liver weight (g)	16.8 ± 2.0	18.3 ± 7.2	17.1 ± 2.5	16.8 ± 2.1	20.0 ± 1.3	17.1 ± 3.5	17.8 ± 2.7	19.1 ± 2.3
Kidney weight (mg)	1933 ± 182	1801 ± 229	1918 ± 233	1887 ± 170	2134 ± 76	1740 ± 164	1863 ± 227	1984 ± 153

Values are expressed as mean ± standard deviation and consist of ten observations per group. * p < 0.05 versus control of the same rat strain # p < 0.05 versus HF of the same rat strain ¥ p < 0.05 versus HanSD counterparts.

Supplementary Figure 1.

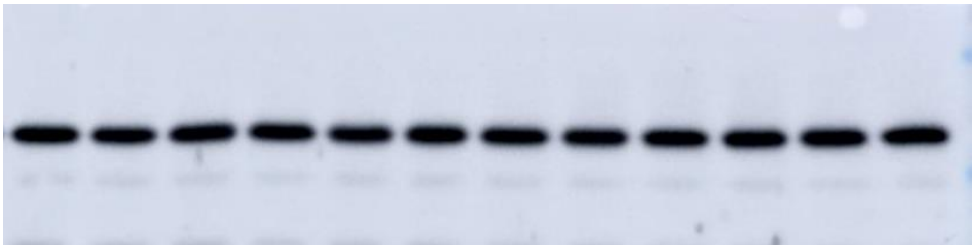
Original unprocessed
Western blots from main
Figure 7E.



eNOS (135 kDa)



B-actin (42 kDa)



HanSD control

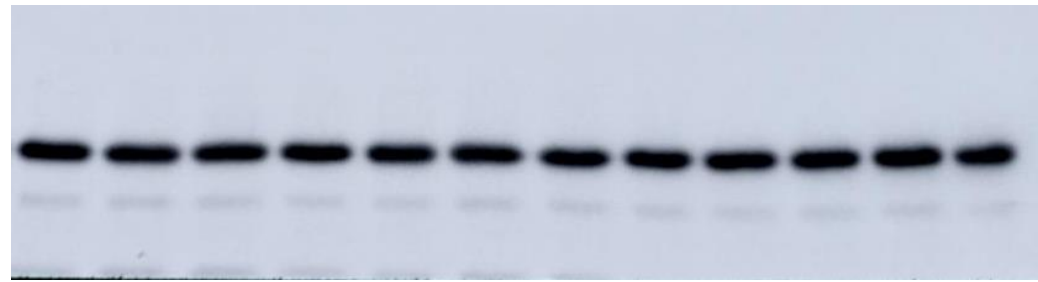
HanSD ACF

HanSD ACEi

eNOS (135 kDa)



B-actin (42 kDa)



HanSD control

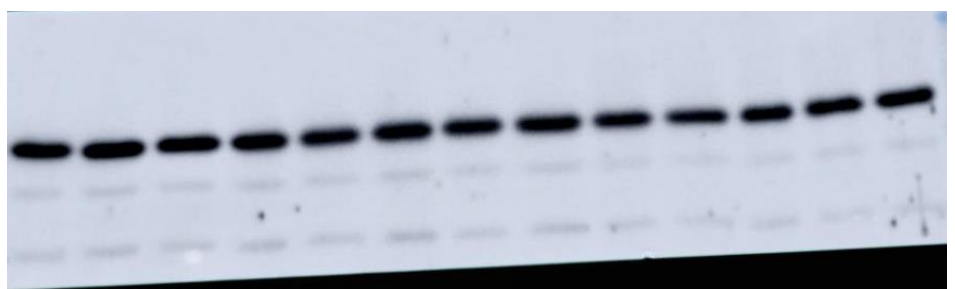
TGR control

HanSD ARB

eNOS (135 kDa)



B-actin (42 kDa)



HanSD control

TGR control

TGR ARB

TGR ACEi

eNOS (135 kDa)



B-actin (42 kDa)



HanSD control

TGR ACF

Supplementary Figure 2. Experimental protocol

