

Loss of *Baiap2l2* destabilizes the transducing stereocilia of cochlear hair cells and leads to deafness

Adam J. Carlton, Julia Halford, Anna Underhill, Jing-Yi Jeng, Matthew R. Avenarius, Merle L. Gilbert, Federico Ceriani, Kimimuepigha Ebisine, Steve D. M. Brown, Michael R. Bowl, Peter G. Barr-Gillespie, Walter Marcotti

Data points for Figures 2B,C,F,G; Figure 8C,F; Figure 9C; Figure 10B,E.

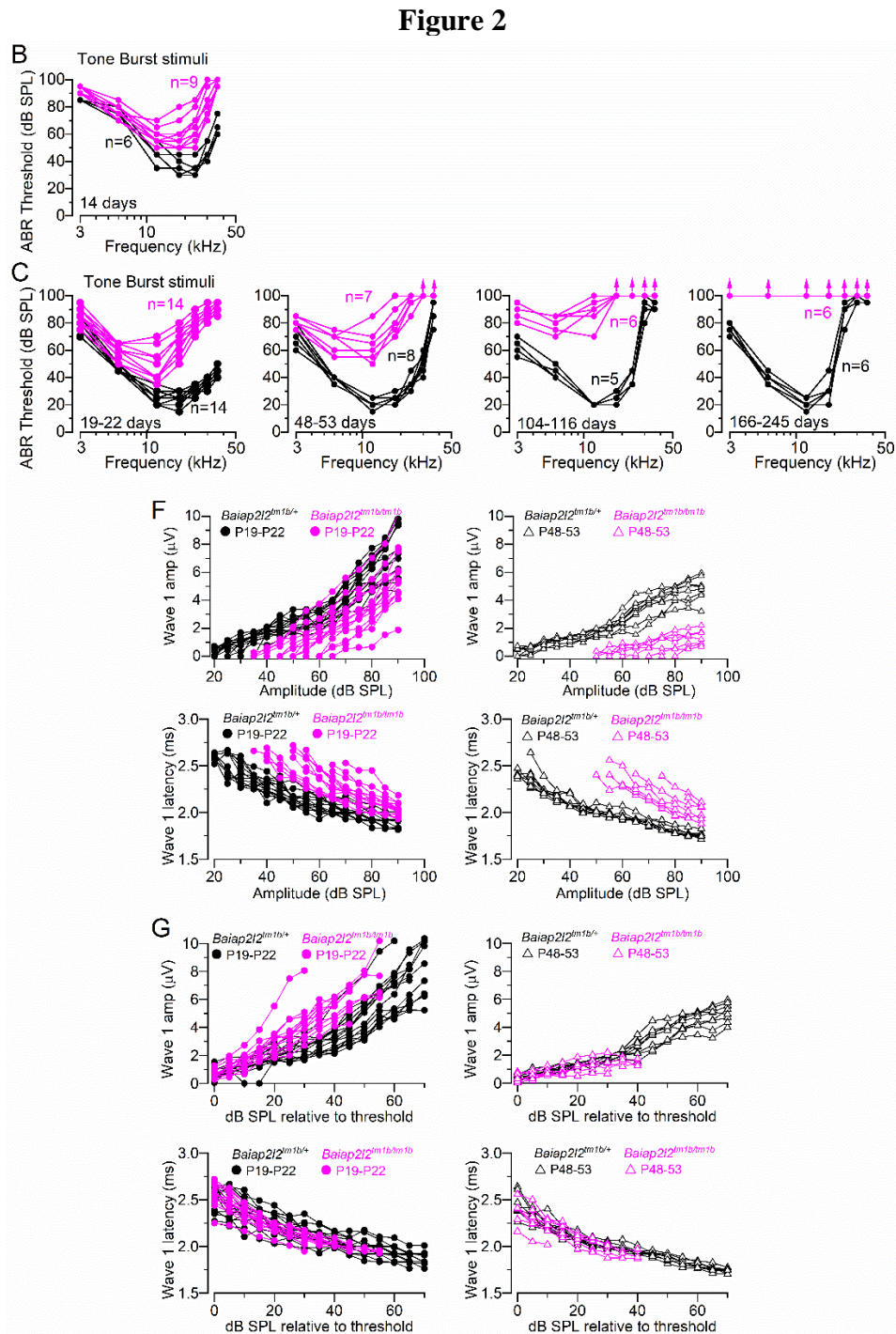


Figure 2: ABR thresholds evoked in *Baiap2l2* mice

Single recordings used to calculate the average values shown in panel B, C, F and G of Figure 2 in the original manuscript. Note that due to the large number of recordings for each conditions, data from control (*Baiap2l2*^{tm1b/+}, left columns) and knockout (*Baiap2l2*^{tm1b/tm1b}, right columns) mice in panel F and G have been plotted separately.

Figure 8

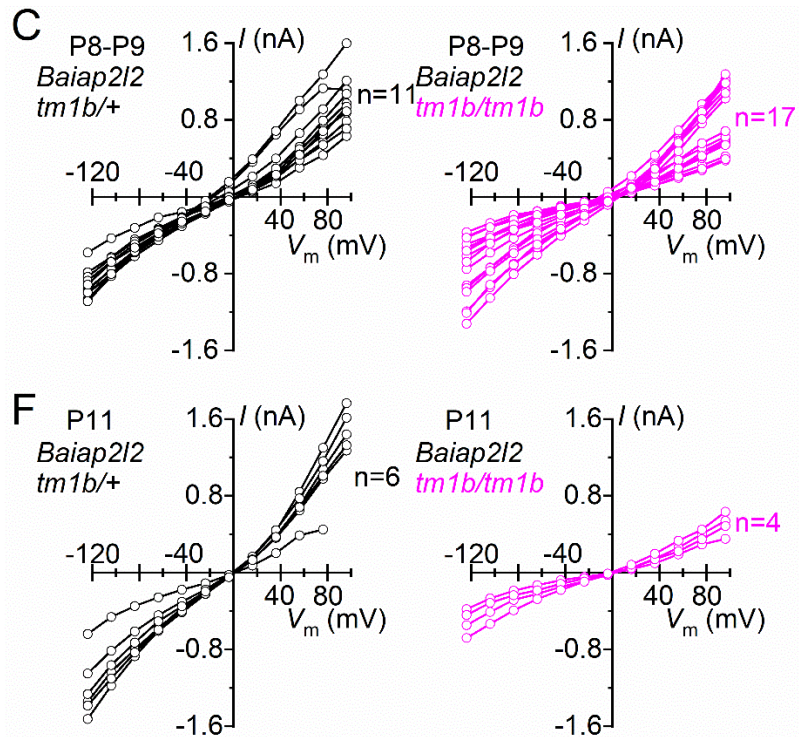


Figure 8. Mechanoelectrical transduction in reduced in *Baiap2l2*^{tm1b} mice

Single recordings used to calculate the average values shown in panel C and F of Figure 8 in the original manuscript. Note that due to the large number of recordings for each conditions, data from control (*Baiap2l2*^{tm1b/+}, left columns) and knockout (*Baiap2l2*^{tm1b/tm1b}, right columns) mice have been plotted separately.

Figure 9

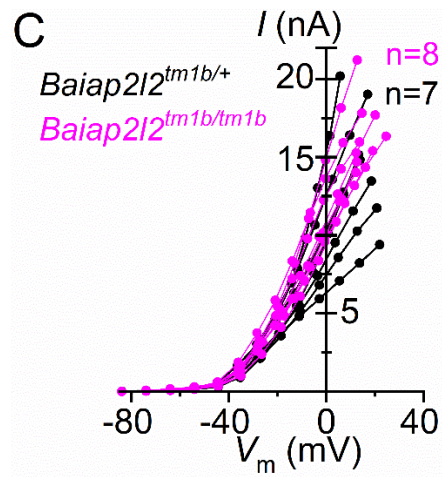


Figure 9. The basolateral membrane properties of adult IHCs are indistinguishable between control and littermate *Baiap2l2*^{tm1b/tm1b} mice

Single recordings used to calculate the average values shown in panel C of Figure 9 in the original manuscript.

Figure 10

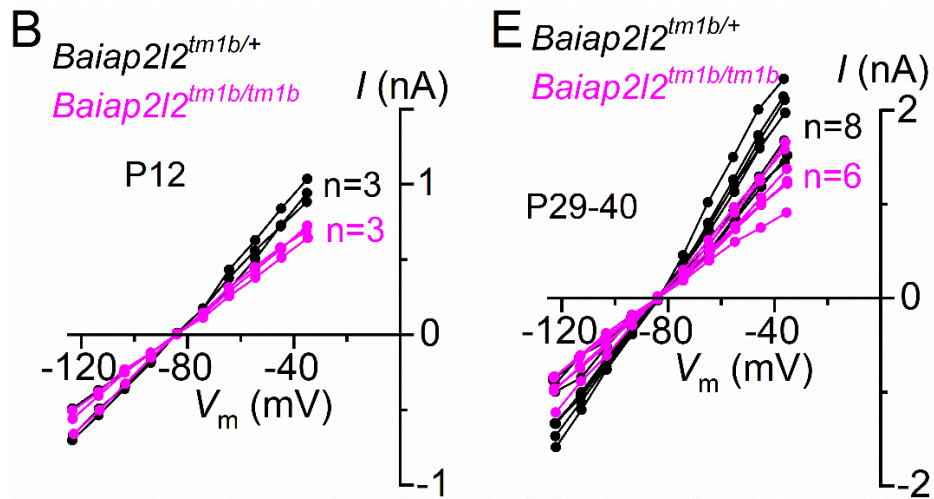


Figure 10. The basolateral membrane properties of adult OHCs are preserved in $Baiap2l2^{tm1b}$ mice

Single recordings used to calculate the average values shown in panel **B** and **E** of Figure 10 in the original manuscript.