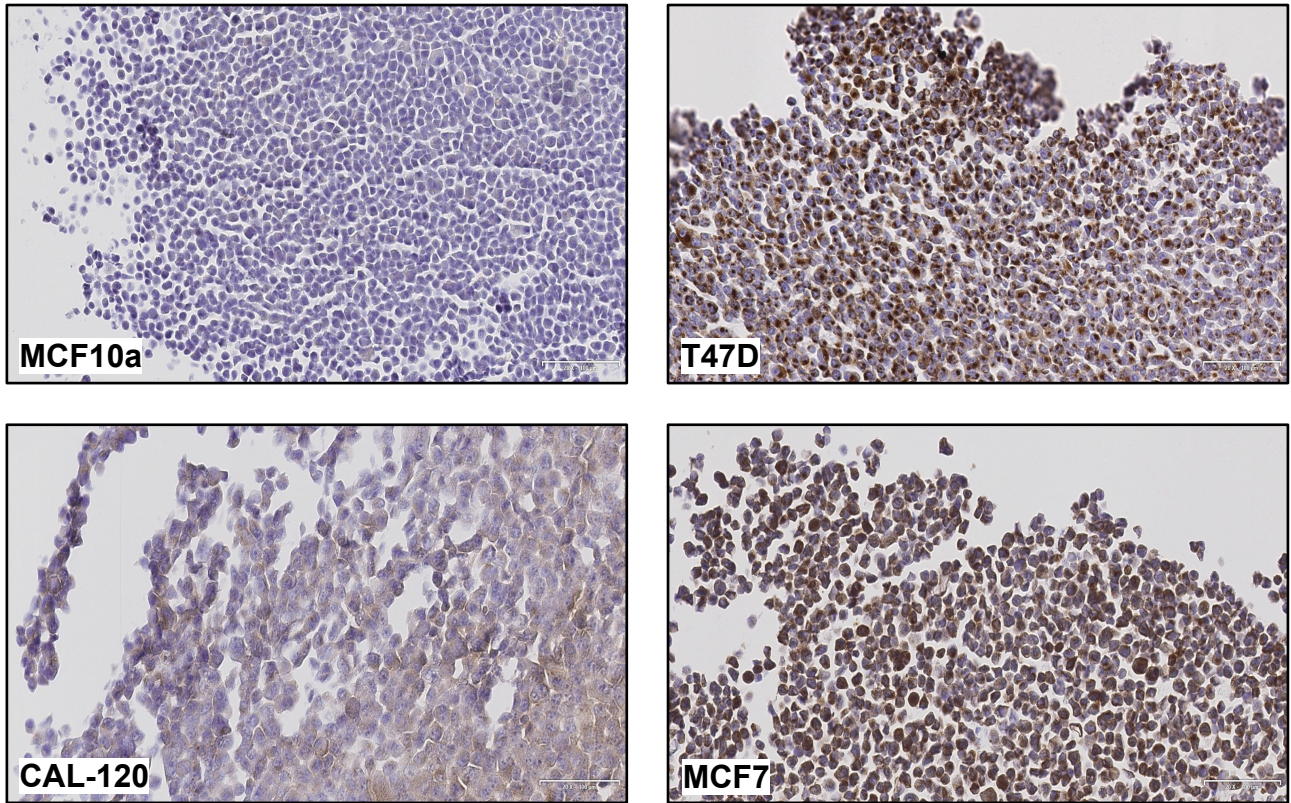


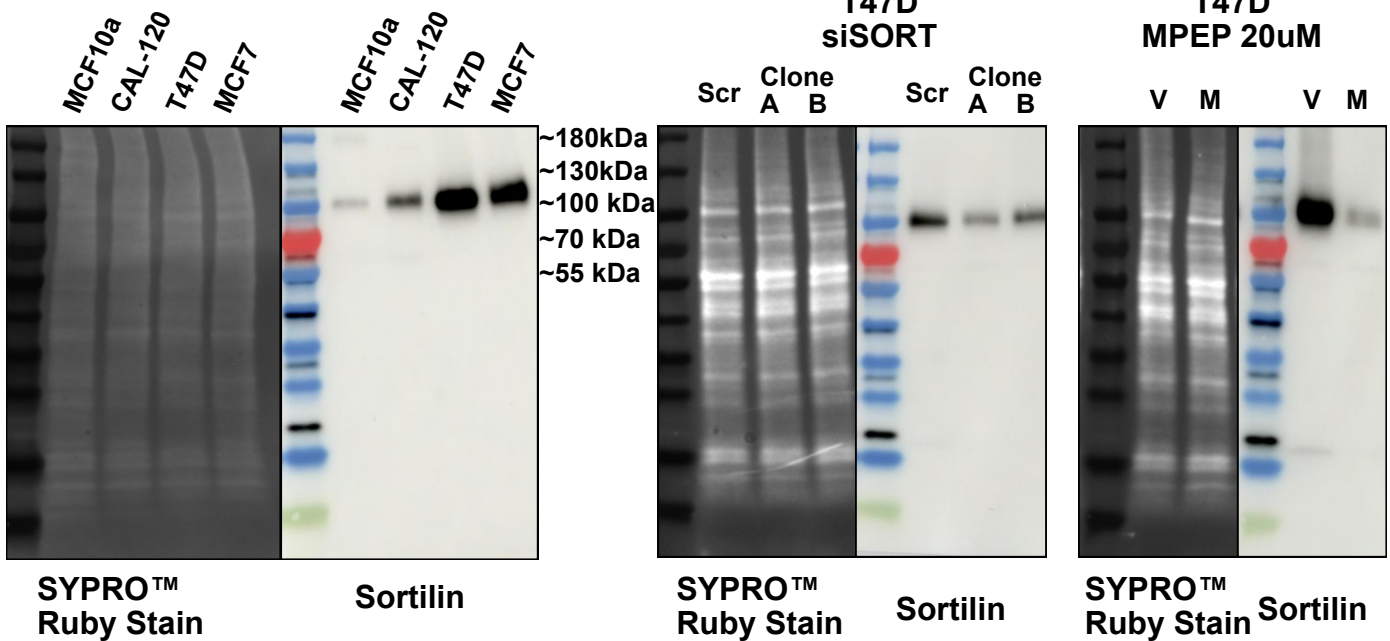
A



B

C

D



Additional file 3: Sortilin antibody validation.

Validation of the sortilin antibody (ab16640, Abcam) using Western blotting and immunohistochemistry. Weak or no staining was seen in MCF10a and CAL-120, while strong positive staining was seen in T47D and MCF7 (A). Correspondingly, protein extracts from T47D and MCF7 gave an intense band at ~95kDa using Western blotting and protein extracts from MCF10a and CAL-120 produced only faint bands (B).

Knockdown experiments using either (C) Scr. control or siSORT, as well as (D) treating cells with a sortilin degrader, MPEP (M; 1-[2-(2-tert-butyl-5-methylphenoxy)-ethyl]-3-methylpiperidine; Lee, Almeida *et al* 2014) confirmed sortilin antibody specificity in T47D. Representative images of three independent experiments. Scalebar represents 100µm.