

Figure supplements

### Actinopterygii and Chondrichthyes

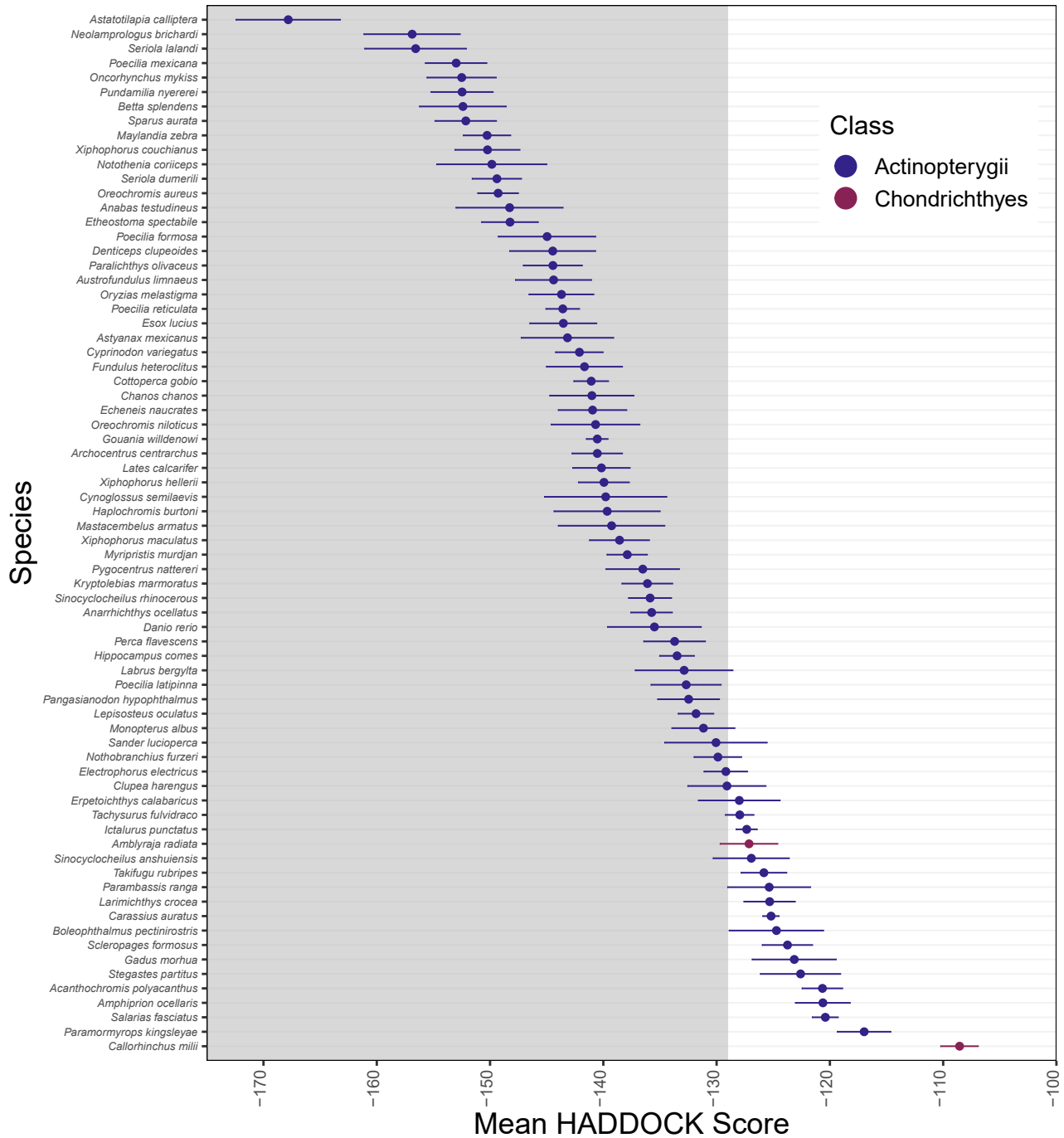
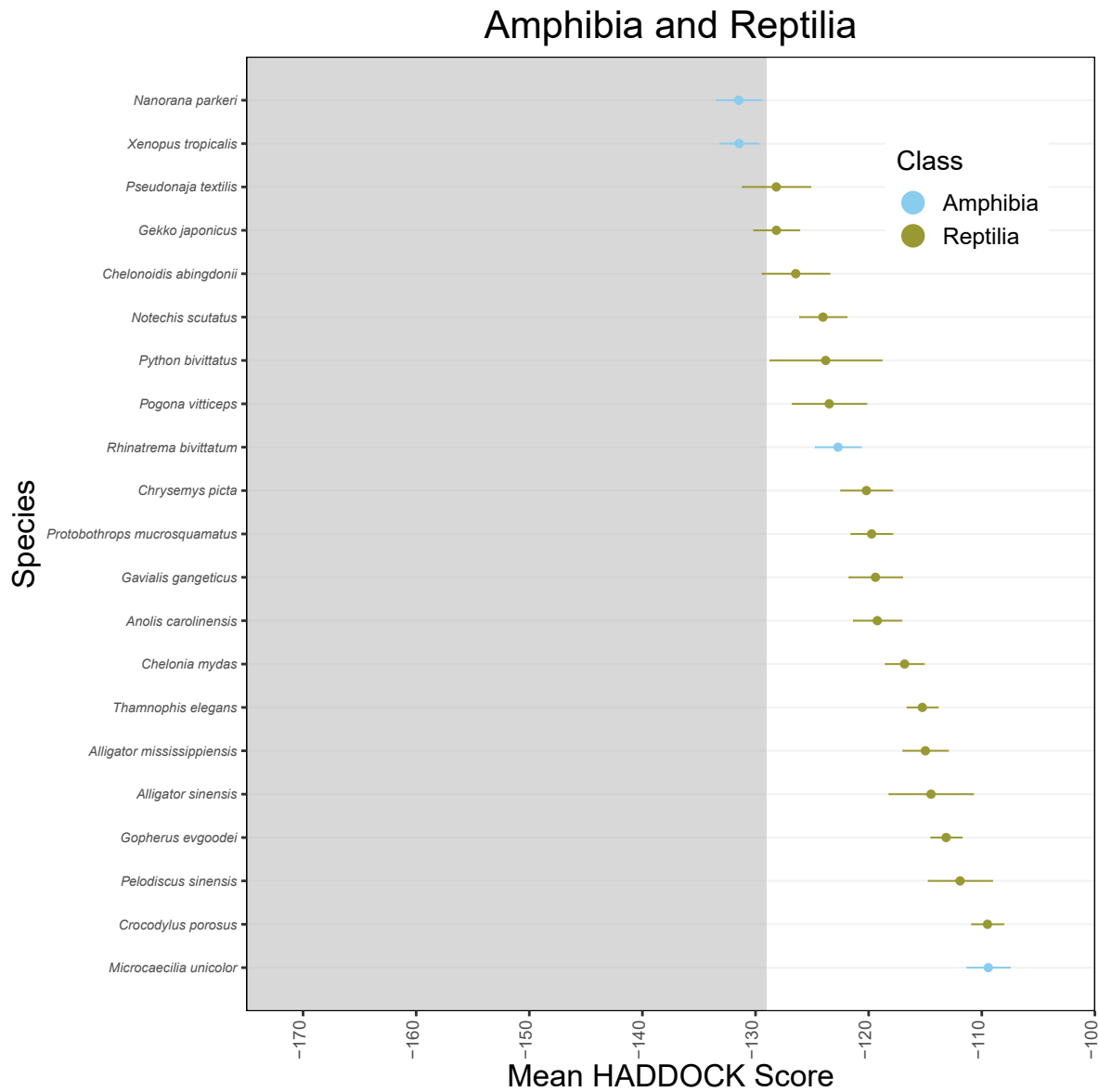
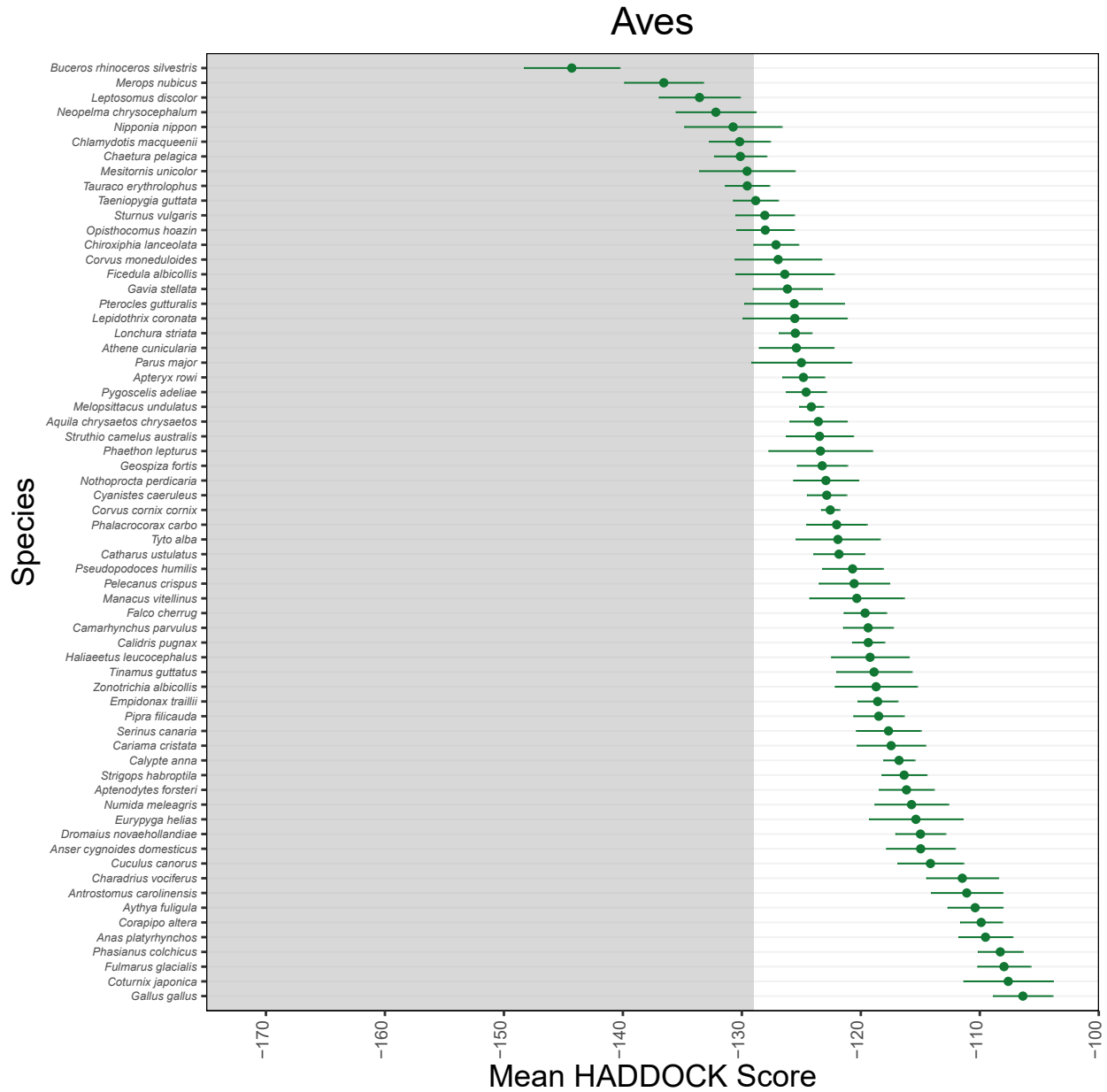


Figure 3-supplement 1. Mean HADDOCK scores (points) and their standard deviations (errorbar) for Actinopterygii and Chondrichthyes.



**Figure 3-supplement 2.** Mean HADDOCK scores (points) and their standard deviations (errorbar) for Amphibia and Reptilia.



**Figure 3-supplement 3.** Mean HADDOCK scores (points) and their standard deviations (errorbar) for Aves.

## Mammalia

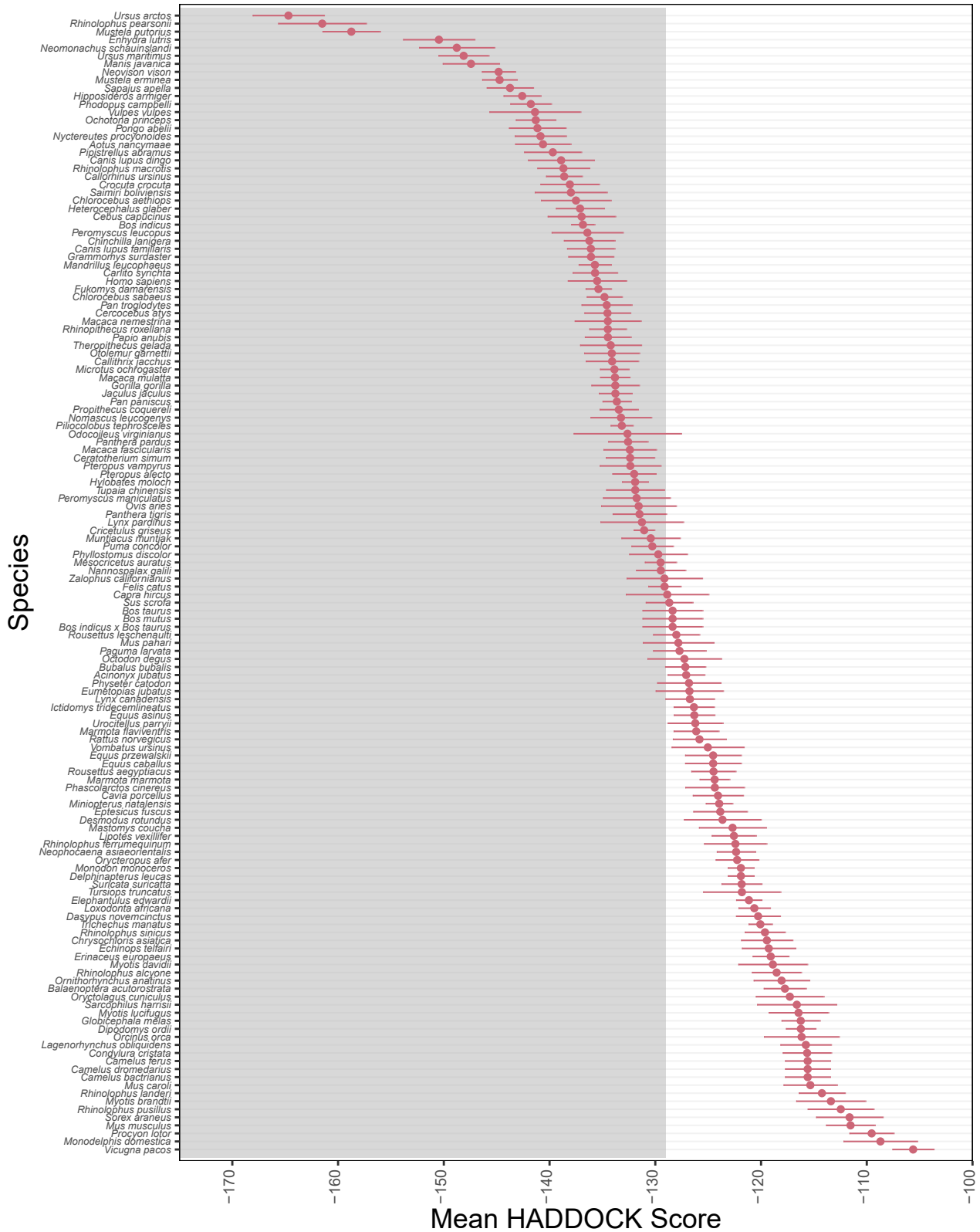
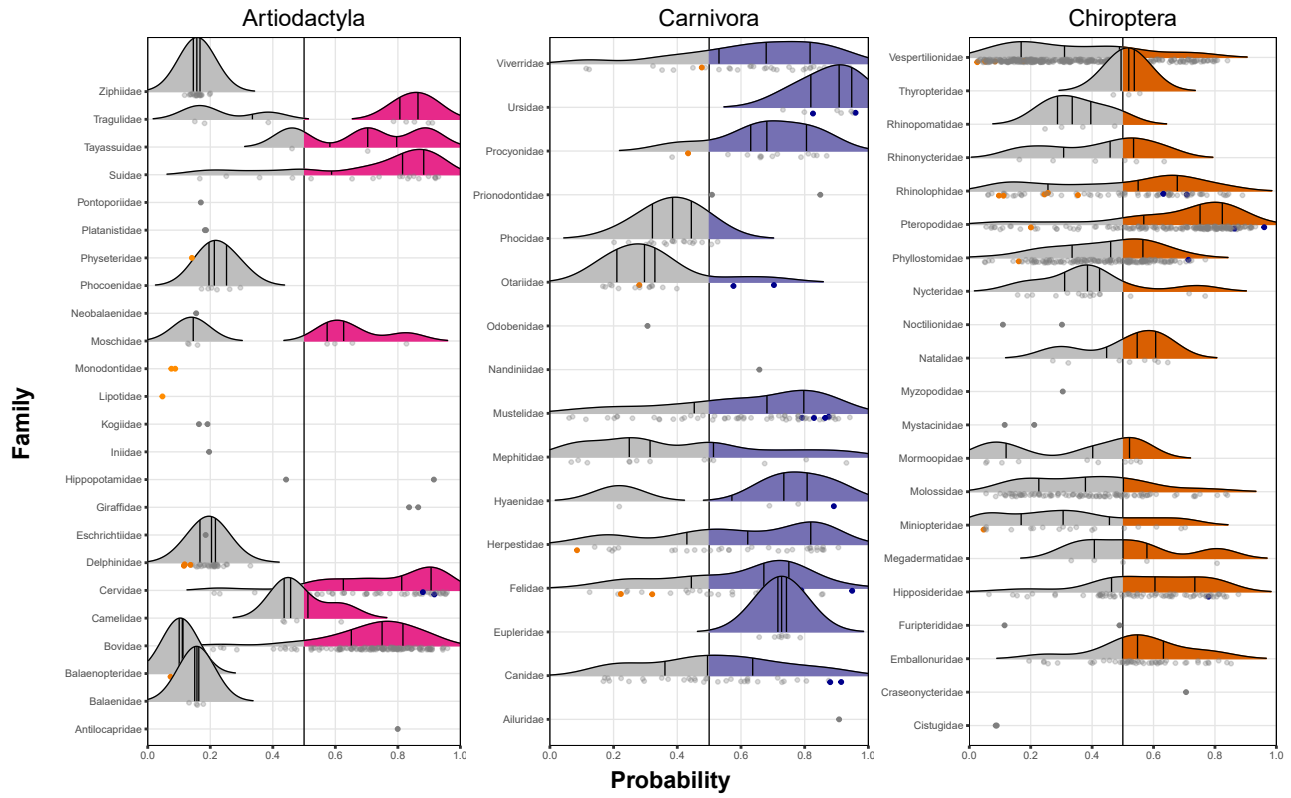
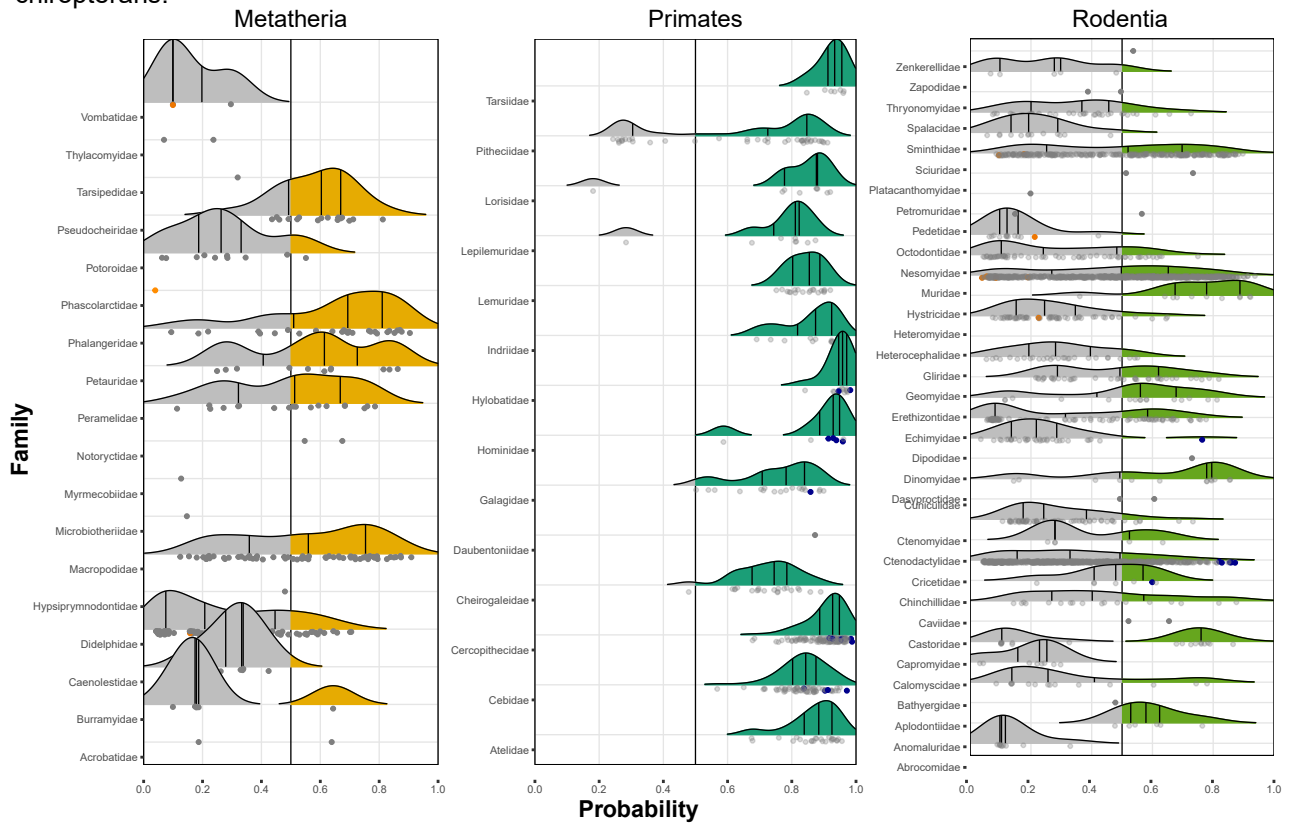


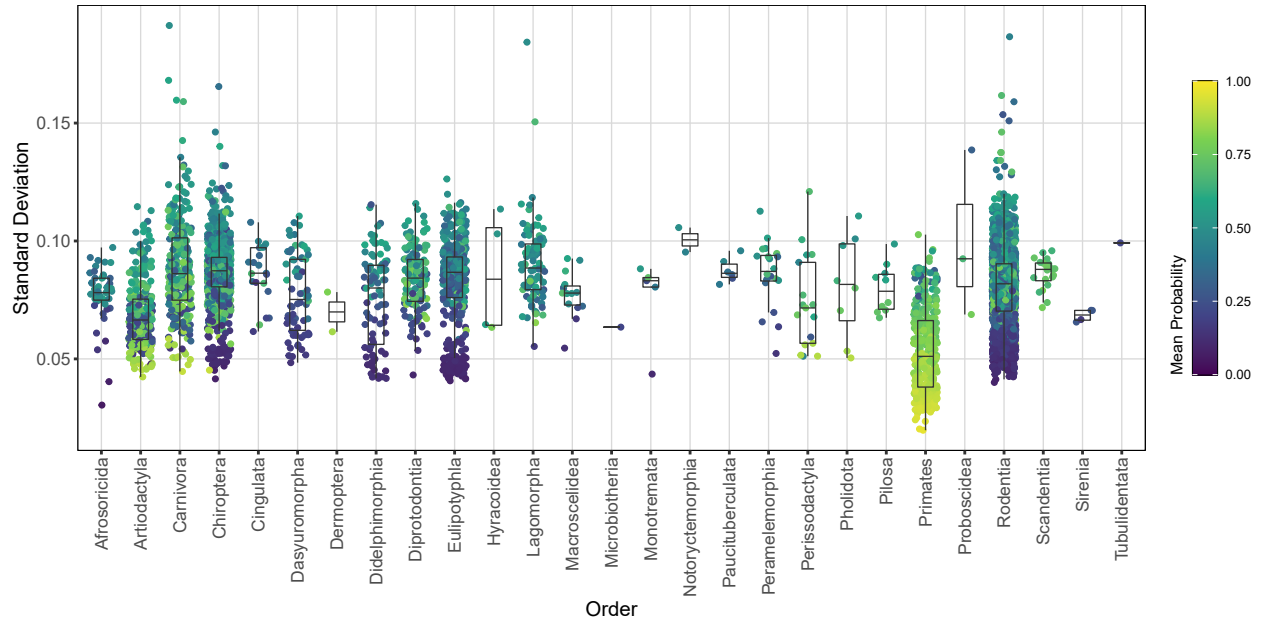
Figure 3-supplement 4. Mean HADDOCK scores (points) and their standard deviations (errorbar) for Mammalia.



**Figure 4-supplement 1.** Distribution of predictions by family for artiodactyls, carnivores, and chiropterans.



**Figure 4-supplement 2.** Distribution of predictions by family for metatherians, primates, and rodents.



**Figure 4-supplement 3.** Standard deviation of predicted zoonotic capacity probability for our 50 bootstrap iterations. Species are grouped by order with color representing the average zoonotic capacity probability score (warmer colors represent higher scores, indicating higher predicted zoonotic capacity, cooler represent lower scores).