

A Prognostic Model for Colorectal Cancer based on CEA and a 48-multiplex Serum Biomarker Panel

Kajsa Björkman¹, Sirpa Jalkanen², Marko Salmi², Harri Mustonen¹, Tuomas Kaprio¹, Henna Kekki³, Kim Pettersson³, Camilla Böckelman^{1,4*} and Caj Haglund^{1,4*}

¹Research Programs Unit, Translational Cancer Medicine, University of Helsinki, Helsinki, Finland

²MediCity Research Laboratory and Institute of Biomedicine, University of Turku, Turku, Finland

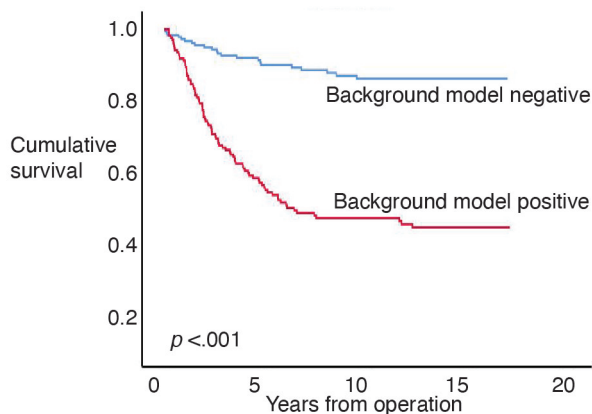
³Department of Biochemistry, University of Turku, Turku, Finland

⁴Department of Surgery, University of Helsinki and Helsinki University Hospital, Helsinki, Finland

*Shared last authorship

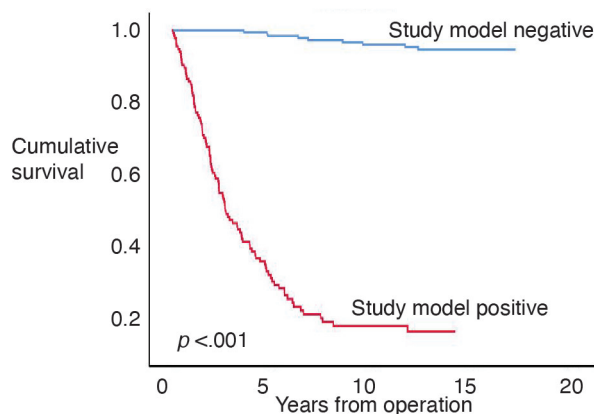
Supplementary figure 1

A. Background model



Patients	negative	176	120	95	22
at risk	positive	159	65	45	6

B. Study model



Patients	negative	197	163	135	27
at risk	positive	131	20	4	0