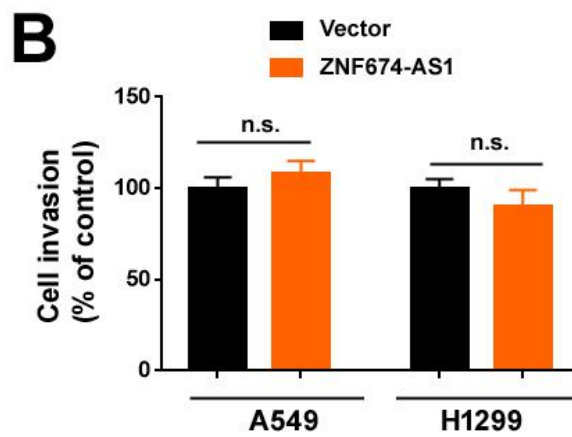
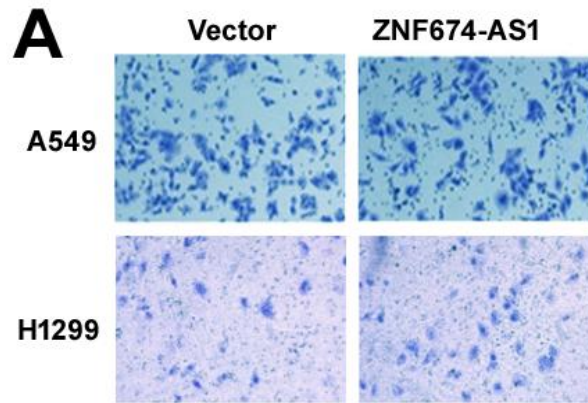
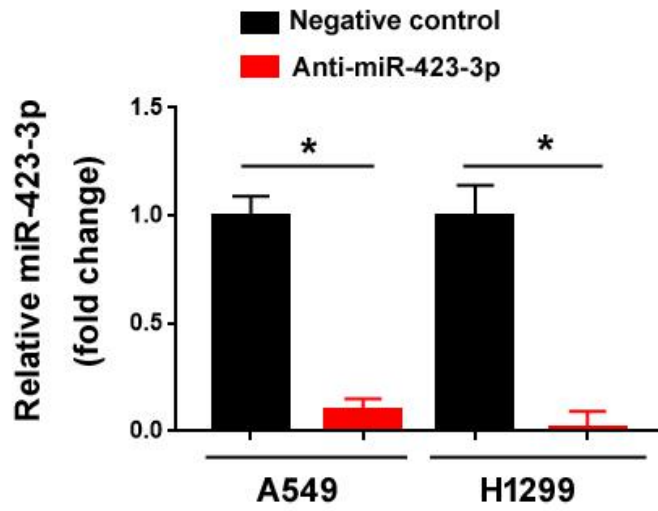


Additional Table S1 Clinicopathological features of NSCLC patients (n = 83)

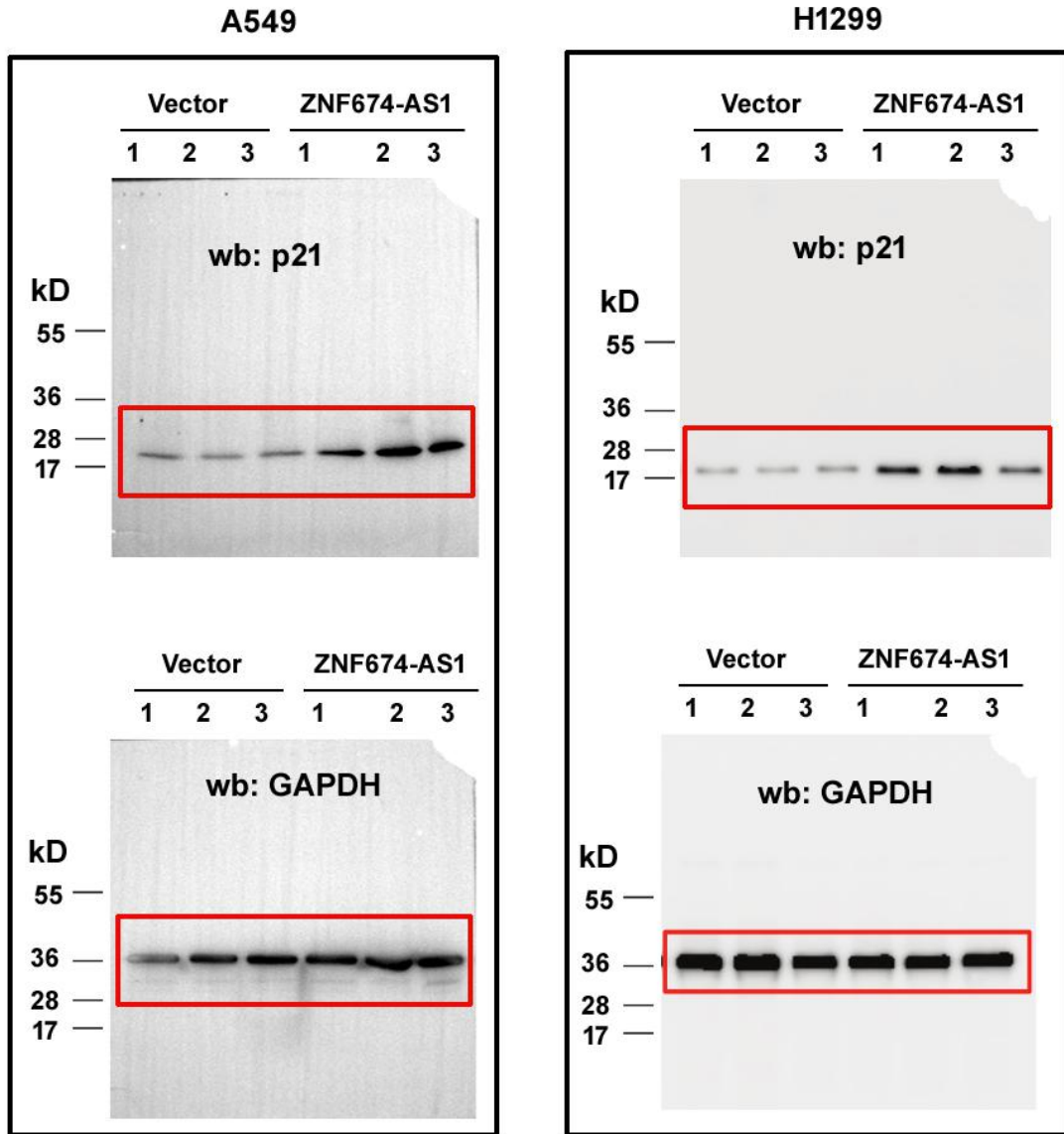
Variable	n
<hr/>	
Age	
<65	38
≥65	45
Sex	
Male	55
Female	28
TNM stage	
I-II	50
III-IV	33
Histological subtype	
Squamous cell carcinoma	22
Adenocarcinoma	61
Lymph node metastasis	
Negative	47
Positive	36



Additional Figure S1. Effect of ZNF674-AS1 overexpression on the invasion of NSCLC cells. (A) Representative images of Transwell invasion assay. (B) Quantification results of Transwell invasion assay. ns: no significance.

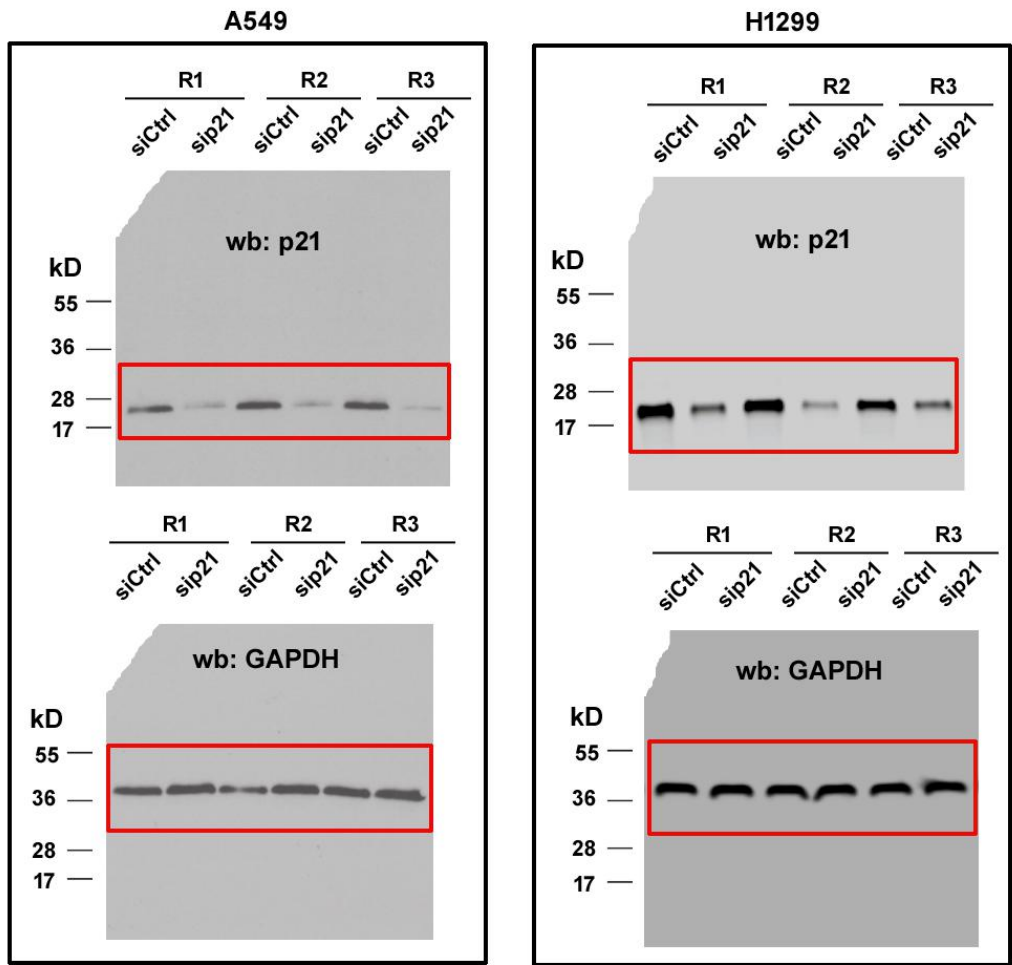


Additional Figure S2. Quantification of miR-423-3p expression in A549 and H1299 cells transfected with negative control or anti-miR-423-3p by real-time PCR analysis.



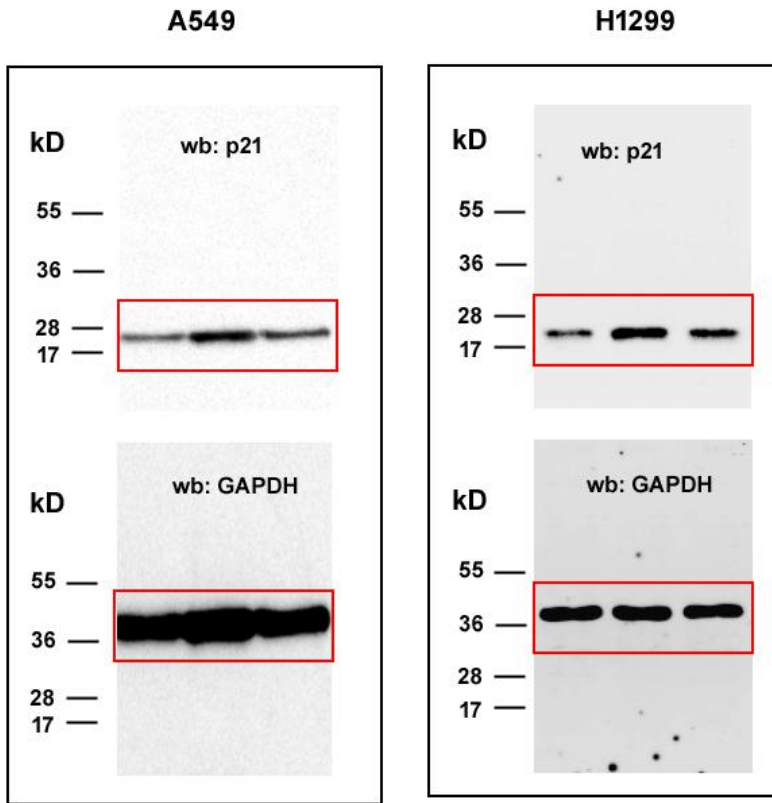
1-3: replicates 1-3, respectively.

Original Western blot images for Figure 5B.



R1, R2, and R3: replicate 1, replicate 2, and replicate 3, respectively.

Original Western blot images for Figure 5D.



Original Western blot images for Figure 6C.