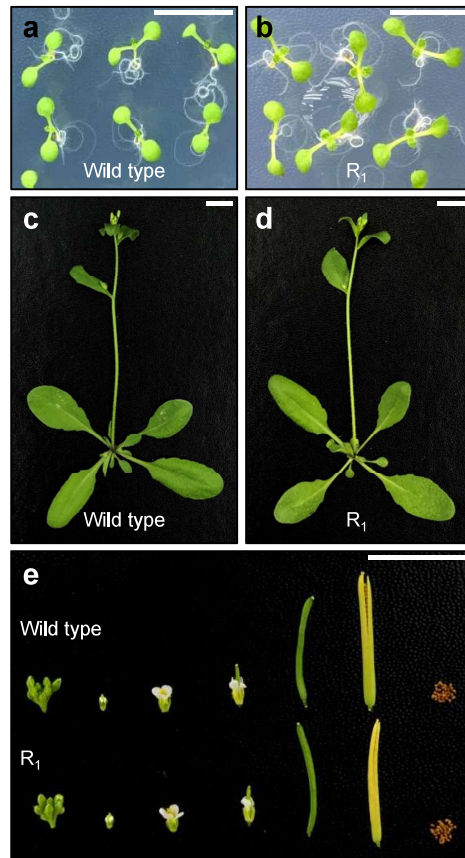


## Additional file 7



**Additional file 7. Phenotypic comparison of wild-type and progeny (R<sub>1</sub>) of protoplast-regenerated plants.**

(a, b) Seed germination. Wild-type (a) and R<sub>1</sub> (b) seeds were germinated on MS medium, incubated for 7 days under long-day conditions, and photographed.

(c, d) Flowering phenotypes. Wild-type (c) and R<sub>1</sub> (d) seeds were sown in soil and grown for 3 weeks under long-day conditions.

(e) Flower and silique development. Plants were grown in soil and grown for 8 weeks under long-day conditions. Scale bars = 1 cm.