

Supplemental figure. Kaplan-Meier curves for Progression-free survival (A) and Overall survival (B) by treatment arm for groups classified according to IPI (Arm A: R-CHOP, Arm B: RW-CHOP)

Figure S1A

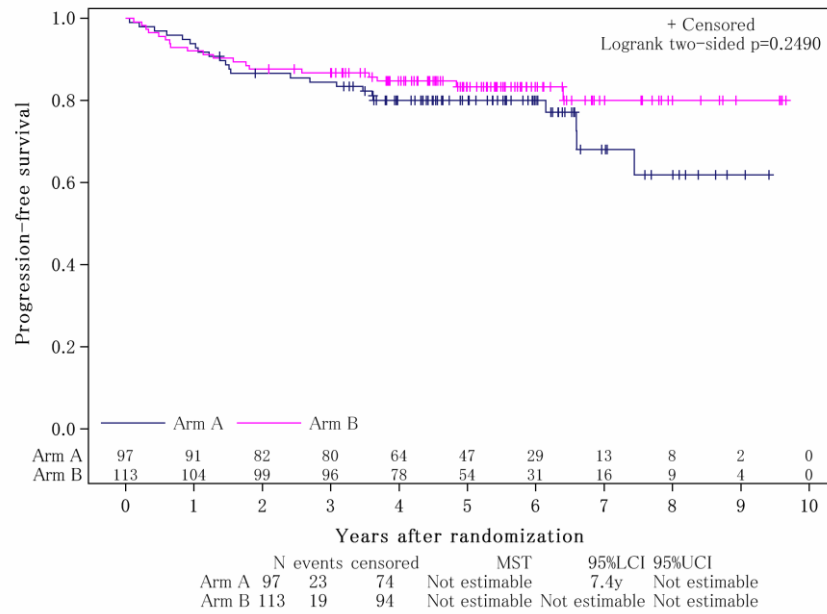
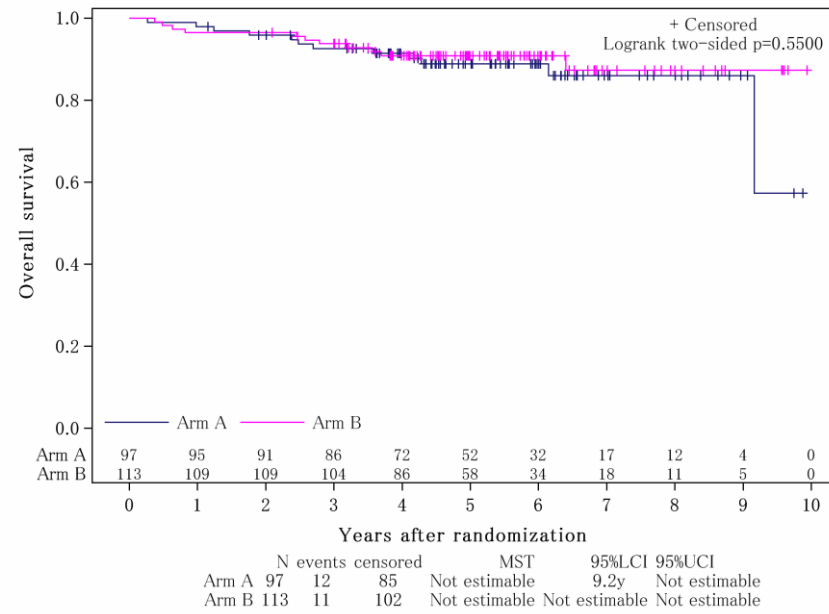


Figure S1B



Low risk

Figure S2A

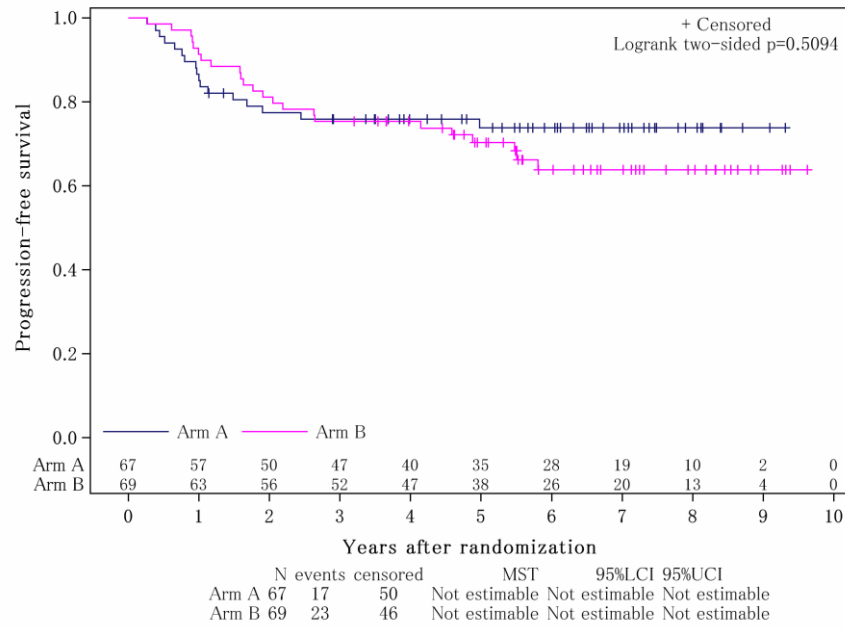
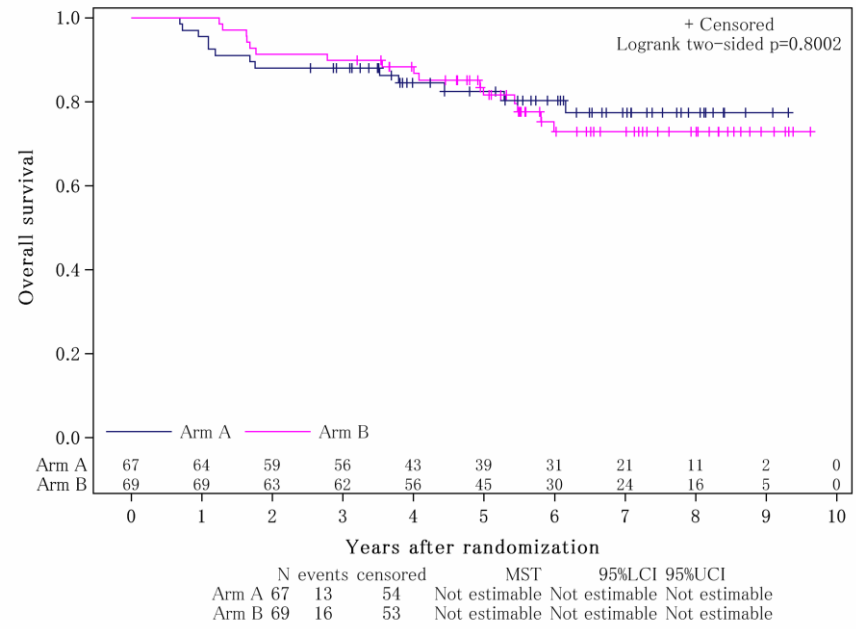


Figure S2B



Low-intermediate risk

Figure S3A

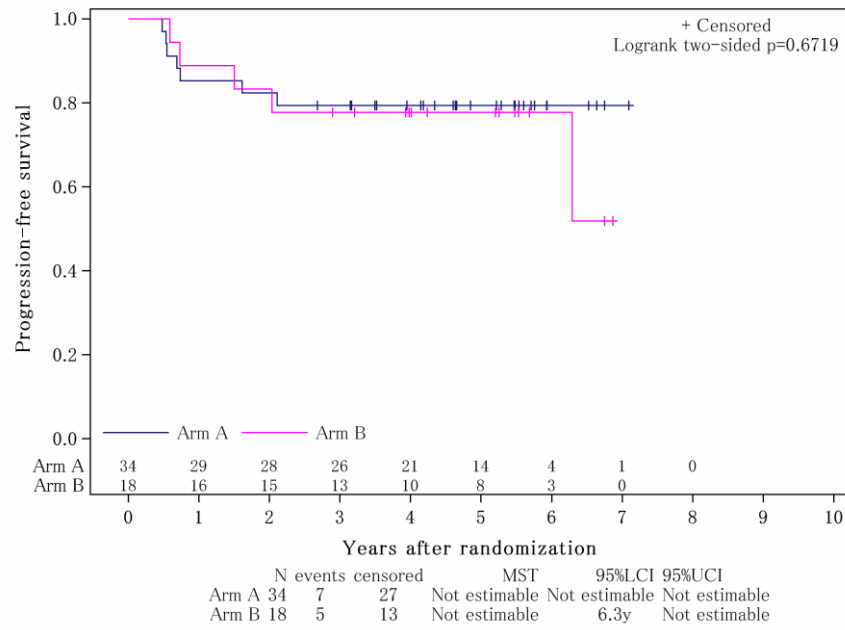
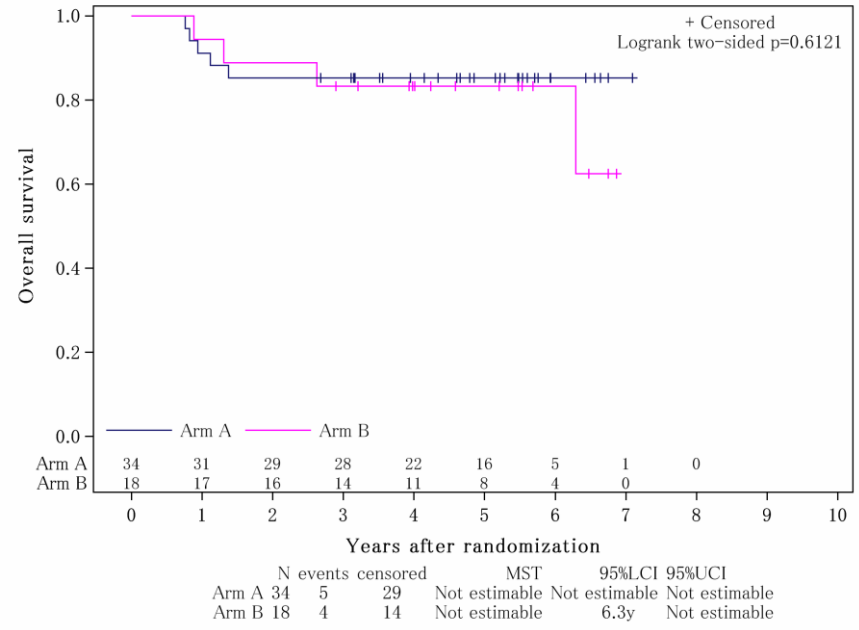


Figure S3B



High-intermediate risk

Figure S4A

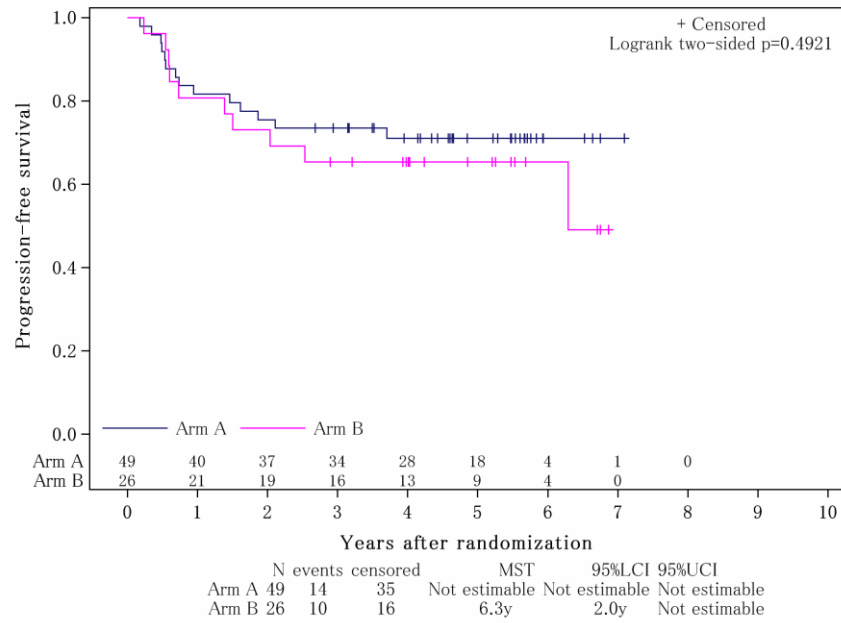
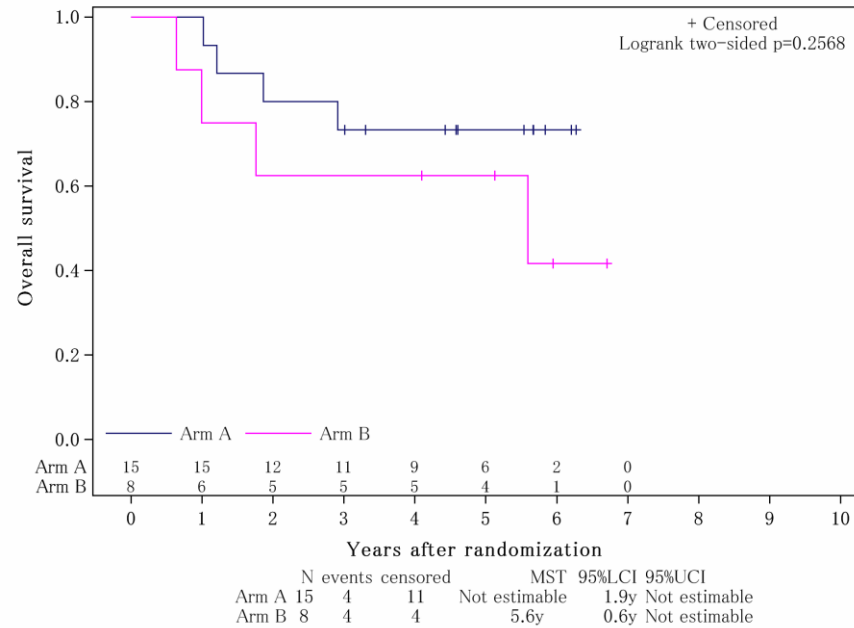


Figure S4B



High risk

R-CHOP, rituximab, cyclophosphamide, doxorubicin, vincristine, and prednisolone; RW-CHOP, weekly rituximab, cyclophosphamide, doxorubicin, vincristine, and prednisolone; IPI, International Prognostic Index

Supplemental table: patients characteristics by gender

	R-CHOP n=213		RW-CHOP n=208		total n=421	
	male n=116	female n=97	male n=116	female n=92	male n=232	female n=189
B symptom present	14	11	19	8	33	19
Bulky mass (≥ 5 cm)	62	39	45	48	107	87
Age						
≤ 60 years	49	49	47	49	96	98
≥ 61 years	67	48	69	43	136	91
LDH > U.N.L	58	52	45	39	103	91
ECOG PS						
0-1	112	95	113	89	225	184
2	4	2	3	3	7	5
Ann Arbor						
I	11	20	18	16	29	36
II	42	28	52	37	94	65
III	33	24	20	22	53	46
IV	30	25	26	17	56	42
Extranodal sites ≥ 2	15	14	10	6	25	20
IPI						
Low	50	47	61	52	111	99
Low-Intermediate	39	28	43	26	82	54
High-Intermediate	18	16	7	11	25	27
High	9	6	5	3	14	9

Abbreviations: ECOG, Eastern Cooperative Oncology Group; PS,

Performance Status; LDH, Lactate Dehydrogenase; U.N.L, Upper Normal

Limit; IPI, International Prognostic Index

Study participants: Drs. Mitsutoshi Kurosawa (Hokkaido Cancer center Sapporo); Shuichi Ota (Sapporo Hokuyu Hospital, Sapporo); Hideo Harigae (Tohoku University, Sendai); Naoto Takahashi (Akita University, Akita); Shin Matsuda (Ohta Nishinouchi Hospital, Koriyama); Akihiko Yokohama (Gunma University, Maebashi); Hirofumi Kobayashi (Saitama Cancer Center, Ina); Naoki Takahashi (Saitama Medical Center, Kawagoe); Yosuke Minami (National Cancer Center East, Kashiwa); Kyoya Kumagai (Chiba Cancer Center, Chiba); Koji Izutsu (National Cancer Center, Tokyo), Nobuyuki Takayama (Kyorin University, Tokyo); Kazuma Ohyashiki (Tokyo Medical University, Tokyo); Tatsu Shimoyama (Tokyo Metropolitan Komagome Hospital, Tokyo); Takashi Shimada (Jikei University School of Medicine, Tokyo); Yutaro Kamiyama (Jikei University Daisan Hospital, Komae); Masahiro Yokoyama (Cancer Institute Hospital, Tokyo) ; Kensuke Usuki (NTT Medical Center, Tokyo); Shuichi Mizuta (Kanazawa Medical University, Kanazawa); Takahiro Yamauchi (University of Fukui, Fukui);

Takaaki Ono (Hamamatsu University School of Medicine, Hamamatsu);
Harumi Kato (Aichi Cancer Center, Nagoya); Kazuyuki Shimada (Nagoya
University, Nagoya); Shigeru Kusumoto (Nagoya City University, Nagoya);
Ichiro Hanamura (Aichi Medical University, Nagakute); Yoshitoyo Kagami
(Toyota Kosei Hospital, Toyota); Motoko Yamaguchi (Mie University, Tsu);
Tsutomu Kobayashi (Kyoto Prefectural University School of Medicine,
Kyoto); Hiroshi Gomyo (Hyogo Cancer Center, Akashi); Katsuto Takenaka
(Ehime University, Shitsukawa); Choi Ilseung (Kyusyu Cancer Center,
Fukuoka); Hidenori Sasaki (Fukuoka University, Fukuoka); Satoshi
Yamasaki (Kyusyu Medical Center, Fukuoka); Junichi Tsukada (University
of Occupational and Environmental Health, Kitakyusyu); Shinya Kimura
(Saga University, Saga); Yukimi Moriuchi (Sasebo City General Hospital,
Sasebo); Yasushi Miyazaki (Nagasaki University, Nagasaki); Hiro Tatetsu
(Kumamoto University, Kumamoto); Toshiro Kawakita (Kumamoto Medical
Center, Kumamoto); Eiichi Otsuka (Oita Prefectural Hospital, Oita); Kenji

Ishizuka (Kagoshima University, Kagoshima); Yoshikiyo Ito (Imamura
General Hospital, Kagoshima)