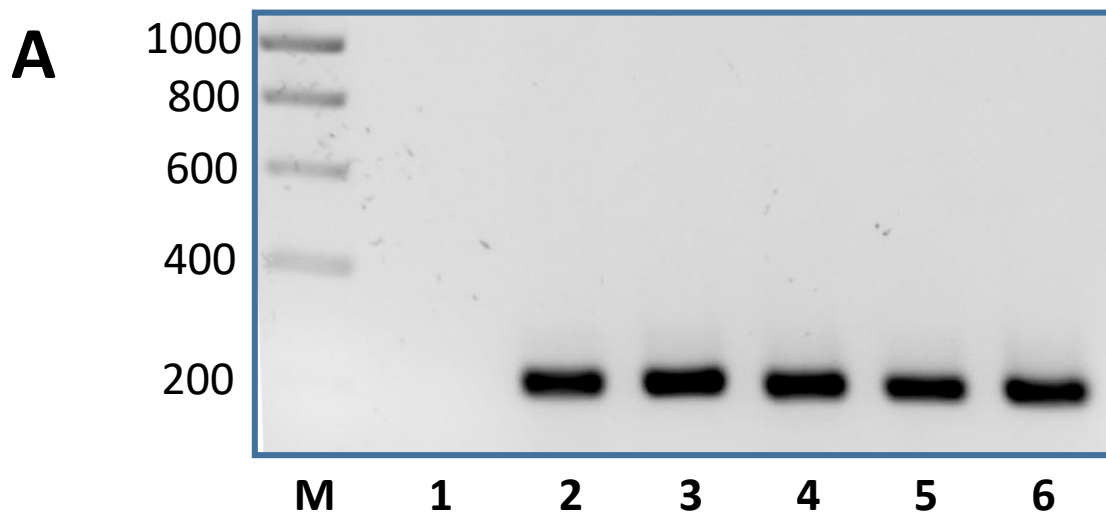


**Figure S5**



**B**

patient number*	material age (years)	sample group	Primer-set 1	Primer-set 3
2	15	1	+	+
		2	-	-
		3	-	-
3	4	1	+	+
		2	+	+
		3	-	-
8	4	1	+	+
		2	+	+
		3	+	+
10	22	1	-	-
		2	-	-
		3	-	-
11	6	1	-	-
		2	-	-
		3	-	-

**Figure S5: Comparison of primer-set 1 and primer-set 3 in detecting *E. multilocularis* DNA in experimental and clinical samples.** A) Agarose gel showing the results of PCR amplification of primer-set 3 on isolated *E. multilocularis* cells mixed with 25 mg liver tissue of mongolian jirds. M, marker lane; 1, no *Echinococcus* cells; 2,  $10^2$  cells; 3,  $10^3$  cells; 4,  $10^4$  cells; 5,  $10^5$  cells; 6,  $10^6$  cells. Marker fragment sizes are indicated to the left (in bp). B) PCR results for selected FFPE samples. Indicated are the patient number (\*as listed in Table S1), the age of the material, the sample group, and the PCR results for primer-set 1 (PCR protocol A) and primer-set 3 (PCR protocol C). + indicates positive result, - indicates negative result.