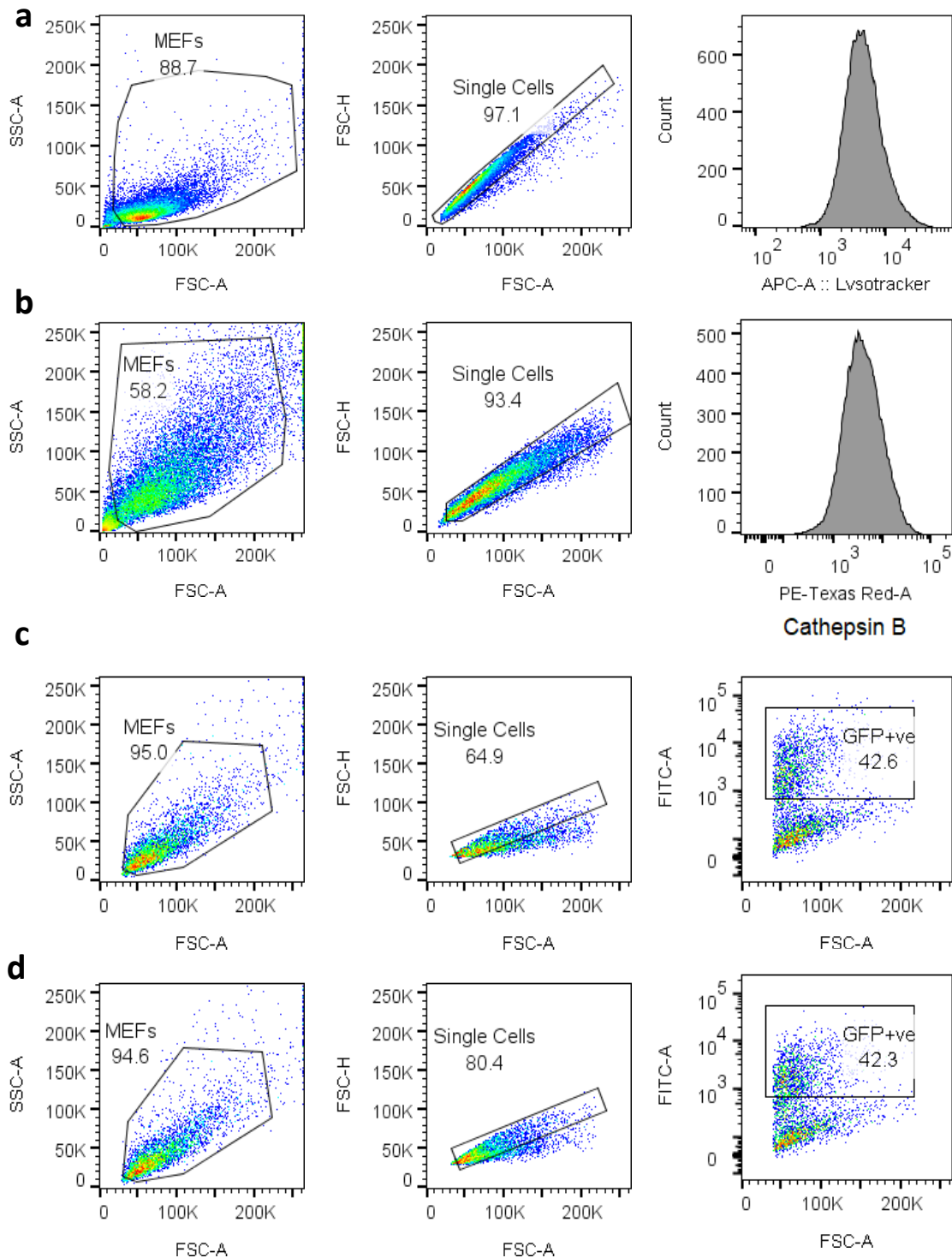


## Supplementary Information



**Representative FACS gating.** **a**, Representative gating and histogram of Lysotracker Deep Red staining in MEFs. **b**, Representative gating and histogram of Magic Red staining (Cathepsin B activity) in an independent MEF line. **c-d**, Representative gating of *Irgm1*<sup>-/-</sup> MEFs transduced with GFP-vector control (**c**) and YFP-Parkin plasmids (**d**) for sorting in the FITC-channel.