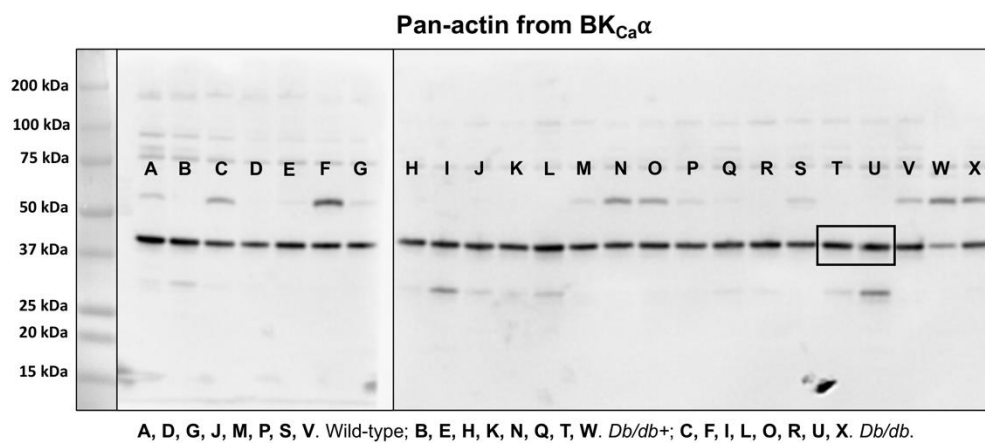
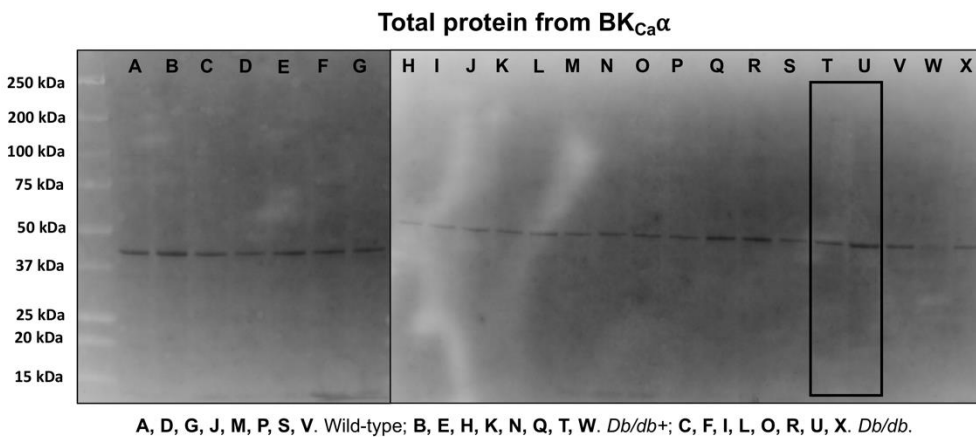
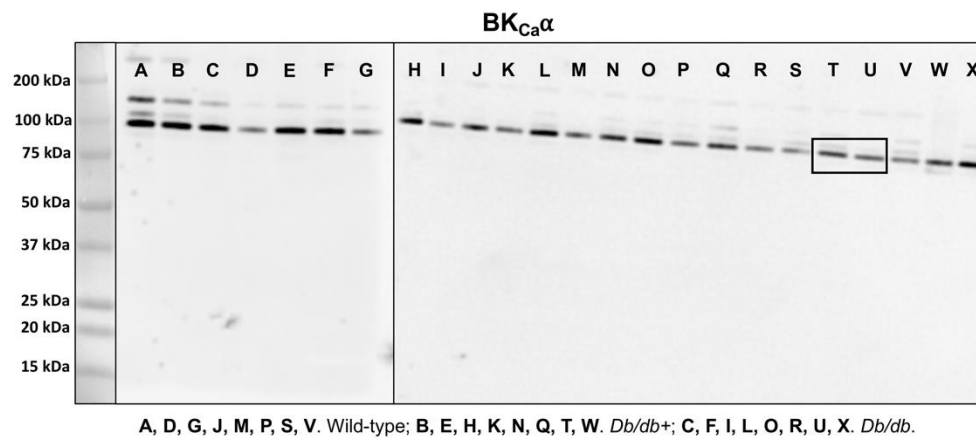


# Western Blot PDF for Review

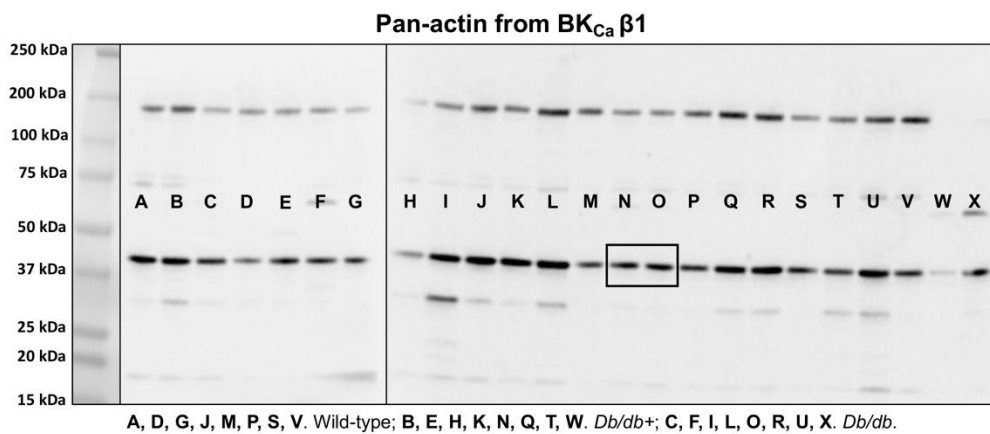
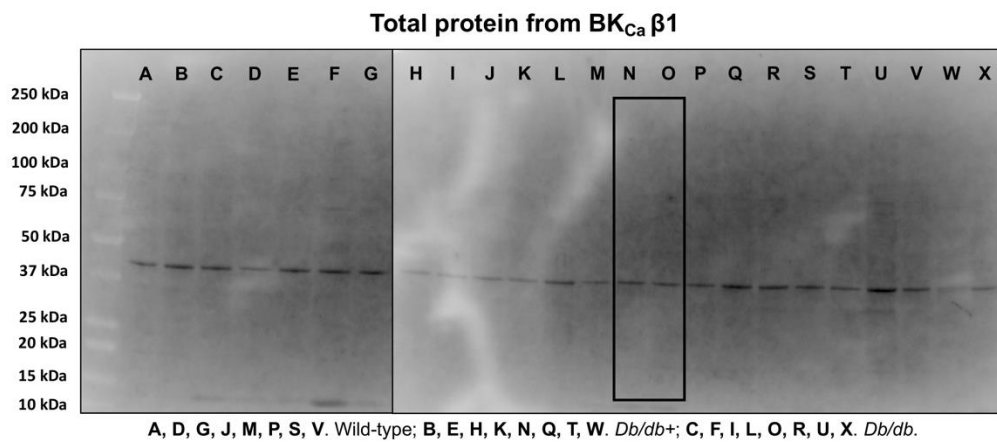
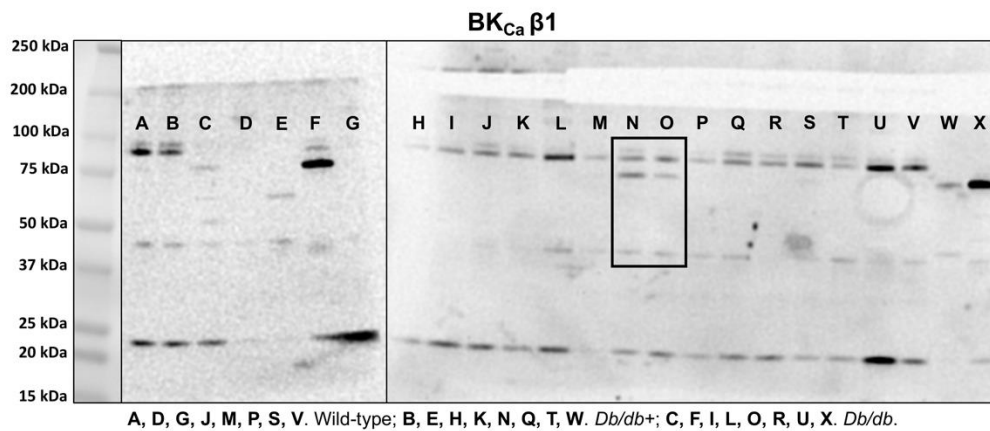
INVOLVEMENT OF VOLTAGE-GATED K<sub>v</sub>7 CHANNELS IN EFFECT OF PIRFENIDONE ON ENDOTHELIUM-DEPENDENT VASODILATATION IN TYPE-2 DIABETIC (db/db) MICE

Lilliana Beck<sup>1,\*</sup>, Estéfano Pinilla<sup>1</sup>, Daniel Arcanjo<sup>1,2</sup>, Raquel Hernanz<sup>1,3</sup>, Judit Prat-Duran<sup>1</sup>, Asbjørn Petersen<sup>1</sup>, Ralf Köhler<sup>4</sup>, Majid Sheykhzade<sup>5</sup>, Simon Comerma-Steffensen<sup>1,6</sup>, and Ulf Simonsen<sup>1,#</sup>



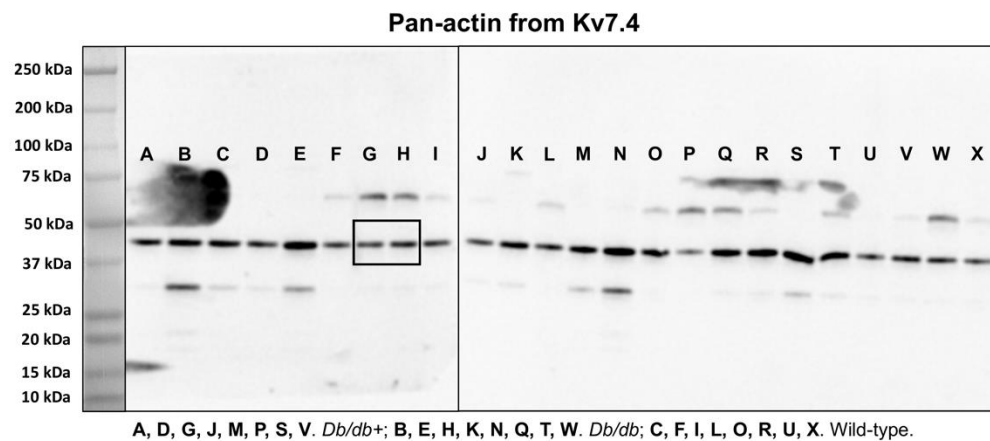
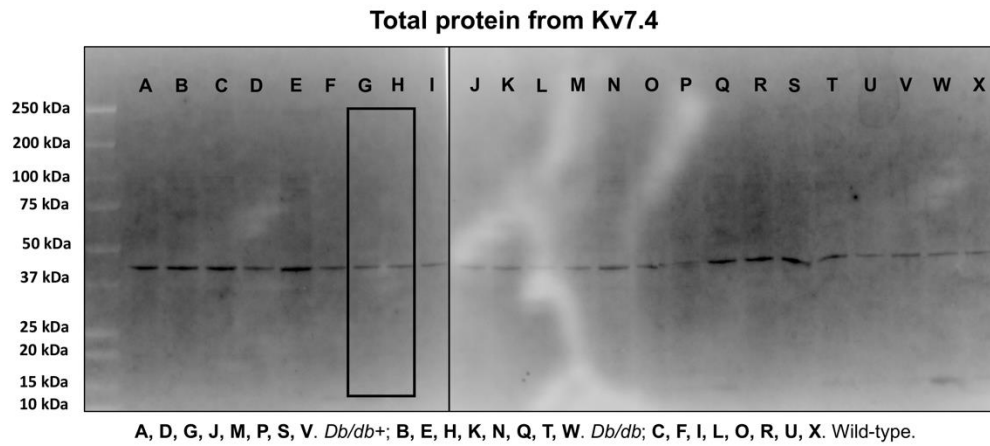
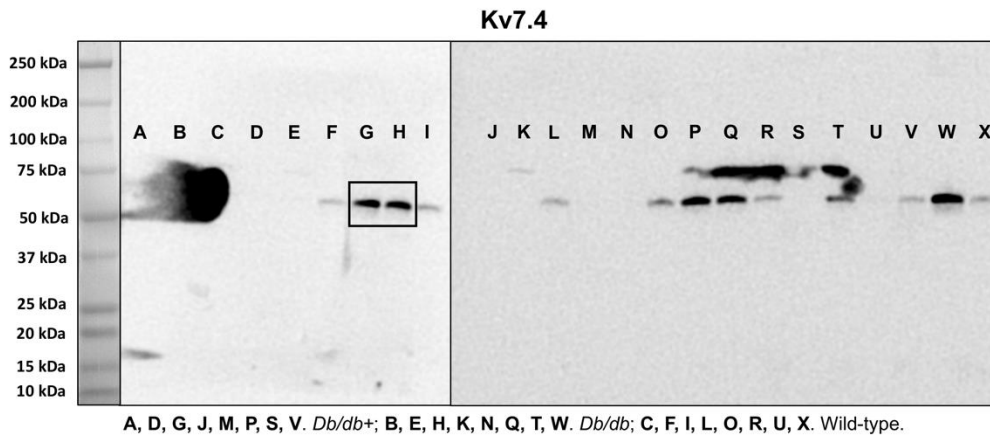
Used in Figure 7 and Supplementary Figure S3


**Supplementary Figure S5. Full immunoblot shown for the BK<sub>Ca</sub>α subunit in mouse aorta from *db/db*<sup>+</sup> and *db/db* mice.**



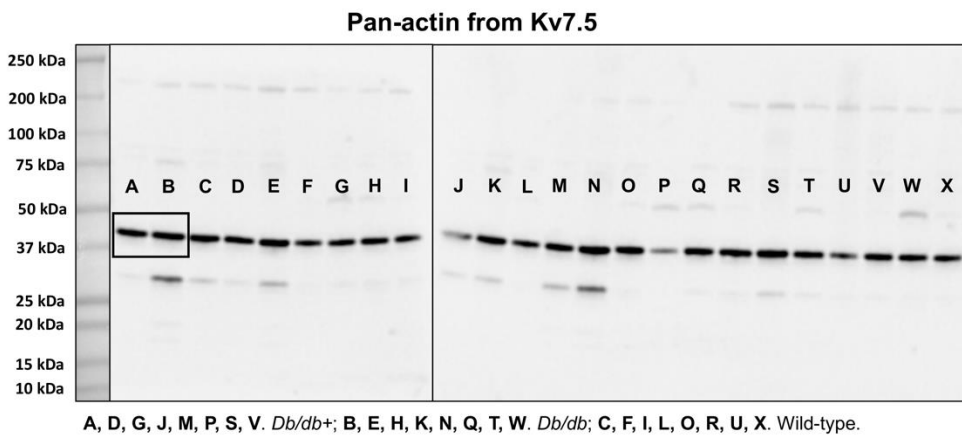
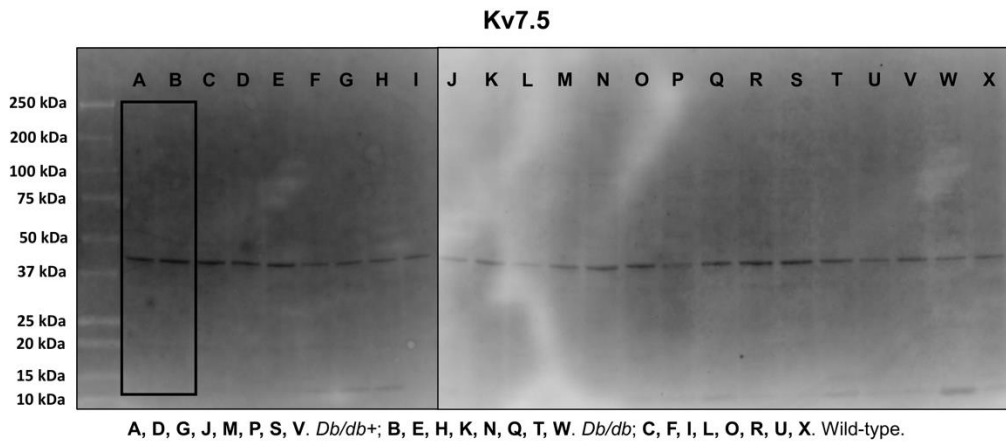
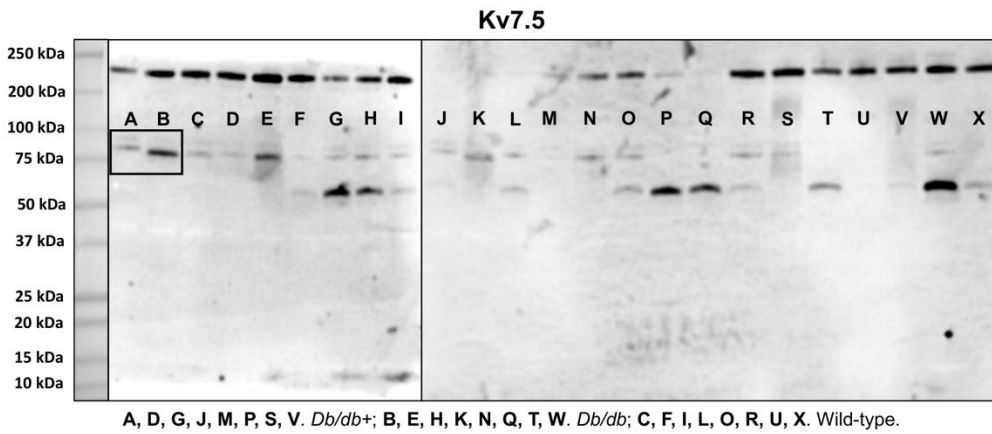
Used in Figure 7 and Supplementary Figure S3

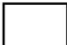
**Supplementary Figure S6. Full immunoblot shown for the BKCaβ1 subunit in mouse aorta from *db/db+* and *db/db* mice.**



 Used in Figure 7 and Supplementary Figure S3

**Supplementary Figure S7. Full immunoblot shown for Kv7.4 channel in mouse aorta from *db/db*+ and *db/db* mice.**



 Used in Figure 7 and Supplementary Figure S3

**Supplementary Figure S8. Full immunoblot shown for Kv7.5 channel in mouse aorta from *db/db*<sup>+</sup> and *db/db* mice.**